

**APPENDIX R:
DOCUMENTATION OF CI CONSULTATIONS
HAVING OCCURRED
CASE 10-T-0139**

REDACTED

Champlain Hudson Power Express

Upland Co-Located Utility Summation Matrix

Revision Date: 04/26/2023 -IFC set

Segment(s)	General Location of Utility		Owner	Utility	Utility		Quality Level (A/B/C/D)
	Station (Starting Point for Parallel and Crossing Point for Perpendicular)	Station (Ending Point for Parallel)			Parallel/ Perpendicular	Description (optional)	
	51003+64		Town of Bethlehem	Storm Sewer	Perpendicular	HPDE	B
	51003+73		National Grid	OH Utility (Electric)	Perpendicular	Overhead Power lines both direction at corner of Route 32 and W Yard Rd	B
	51004+05		National Grid	UG Utility (Gas)	Perpendicular	Gas line crosses Feura Bush Rd to East side of W Yard Rd	B
	51004+30		Town of New Scotland	Water Line	Perpendicular	Water line crossing the alignment, on South side of Feura Bush Rd	B
	51007+06		Town of Bethlehem	Storm Sewer	Perpendicular	HPDE	B
	51008+80	51022+25	Verizon	UG Utility (Telephone)	Parallel	West side of W Yard Rd - crosses at Sta 51022+25	B
	51007+90		Verizon	UG Utility (Telephone)	Perpendicular	West side of W Yard Rd	B
	51008+40		National Grid	OH Utility (Electric)	Perpendicular	OH Distribution line crosses the alignment	B
	51009+44	51060+85	National Grid	OH Utility (Electric)	Parallel	OH distribution line on the west side of the alignment	B
	51010+00		Town of Bethlehem	Storm Drainage Pipe/Culvert	Perpendicular	42" Steel Storm crossing the alignment	B
	51017+45		Town of Bethlehem	Storm Sewer	Perpendicular	HDPE Pipe on east side of alignment	B
	51017+45	51020+25	Town of Bethlehem	Storm Sewer	Parallel	HDPE Pipe on east side of alignment	B
	51019+75		Verizon	UG Utility (Telephone)	Perpendicular	Manhole on east side of alignment	B
	51020+25		Town of Bethlehem	Storm Sewer	Perpendicular	Storm Sewer manhole on east side of alignment	B
	51022+39		Verizon	UG Utility (Telephone)	Perpendicular	UG Fiber optic crossing W Yard Rd	B
	51022+39		Verizon	UG Utility (Telephone)	Perpendicular	Fiber Pedastal on east side of alignment	B
	51035+90		Time Warner	UG Utility (Fiber)	Perpendicular	Underground service connection	B
	51035+96		National Grid	OH Utility (Transmission)	Perpendicular	(B) Overhead Transmission circuits crossing Yard Rd	B
	51040+20	51053+87	Time Warner	UG Utility (Fiber)	Parallel	Underground Fiber along West side of Yard Rd	B
	51042+01		Town of Bethlehem	Storm Sewer	Perpendicular	HDPE	B
	51042+17		National Grid	OH Utility (Electric)	Perpendicular	Overhead Service Line	B
	51043+75		Time Warner	UG Utility (Fiber)	Perpendicular	Fiber Optic Box on east side of alignment	B
	51047+29		Time Warner	UG Utility (Fiber)	Perpendicular	Fiber Optic Box on east side of alignment	B
	51053+87		Time Warner	UG Utility (Fiber)	Perpendicular	Fiber Optic Box on east side of alignment	B
	51055+20		Town of Bethlehem	Storm Drainage Pipe/Culvert	Perpendicular	CMP	B
	51060+85		CSX RR	OH Utility (Electric)	Perpendicular	Overhead Power lines - W Yard Rd, Electric poles on both sides of alignment	B
	51060+85		Time Warner	UG Utility (Fiber)	Perpendicular	Fiber Optic Box on east side of alignment	B
	51076+25	51082+50	City of Albany	Water Line	Parallel	Parallels trail on East side	B
	51082+75		City of Albany	Water Line	Perpendicular	Parallels trail on East side	B
	51084+00	51138+22	Verizon	UG Utility (Telephone)	Parallel	On South side of S Albany Rd	B
	51084+27		National Grid	OH Utility (Electric)	Perpendicular	Overhead Electric Transmission - S Albany Rd	B
	51084+27	51109+30	National Grid	OH Utility (Electric)	Parallel	Overhead High Voltage Distribution - S Albany Rd	B
	51094+70		Town of Bethlehem	Storm Drainage Pipe/Culvert	Perpendicular	CMP - Southern Terminus not Found	B
	51100+92		Verizon	UG Utility (Telephone)	Perpendicular	Coax Service Connection	B
	51101+90		Town of Bethlehem	Storm Drainage Pipe/Culvert	Perpendicular	CMP - S Albany Rd	B

Champlain Hudson Power Express Upland Co-Located Utility Summation Matrix

Revision Date: 04/26/2023 -IFC set

Segment(s)	General Location of Utility		Owner	Utility	Utility		Quality Level (A/B/C/D)
	Station (Starting Point for Parallel and Crossing Point for Perpendicular)	Station (Ending Point for Parallel)			Parallel/ Perpendicular	Description (optional)	
Segment 9 (Package 5B) - CSX Selkirk Rail Yard Bypass	51102+36		National Grid	OH Utility (Electric)	Perpendicular	Overhead Electric Service - S Albany Rd	B
	51103+59		National Grid	OH Utility (Electric)	Perpendicular	Overhead Electric Service - S Albany Rd	B
	51104+68		National Grid	OH Utility (Electric)	Perpendicular	Overhead Electric Service - S Albany Rd	B
	51105+38		Verizon	UG Utility (Telephone)	Perpendicular	Telephone manhole on east side of alignment	B
	51107+80	51108+10	Town of Bethlehem	Storm Drainage Pipe/Culvert	Parallel	CMP - Private on East side of alignment	B
	51108+55		City of Albany	Water Line	Perpendicular	Water Main to Treatment Plant/Lift Station	B
	51108+70		Town of Bethlehem	Storm Drainage Pipe/Culvert	Perpendicular	CMP pipe crossing the alignment	B
	51109+00	51134+45	Level 3	UG Utility (Fiber)	Parallel	On South side of S Albany Rd	B
	51109+22		National Grid	OH Utility (Electric)	Perpendicular	Overhead Service - S Albany Rd - Fiber transition to underground	B
	51109+40	51117+00	Level 3	UG Utility (Fiber)	Parallel	On North side of S Albany Rd	B
	51112+15		Town of Bethlehem	Storm Drainage Pipe/Culvert	Perpendicular	CMP pipe crossing the alignment	B
	51113+05		Time Warner	UG Utility (Fiber)	Perpendicular	Fiber Optic Box on west side of alignment	B
	51114+13		Town of Bethlehem	Storm Drainage Pipe/Culvert	Perpendicular	CMP pipe crossing the alignment	B
	51115+58		Time Warner	UG Utility (Fiber)	Perpendicular	Fiber Optic Box on east side of alignment	B
	51116+45		Verizon	UG Utility (Telephone)	Perpendicular	Coax Service Connection	B
	51116+55	51132+10	City of Albany	Water Line	Parallel	~25' off Edge of Pavement on South Side of S Albany Rd and crosses at Sta 51116+55	B
	51117+18		Time Warner	UG Utility (Fiber)	Perpendicular	Fiber Optic Box on east side of alignment	B
	51117+50	51132+95	Level 3	UG Utility (Fiber)	Parallel	On South side of S Albany Rd	B
	51117+50	51132+95	Verizon	UG Utility (Telephone)	Parallel	On South side of S Albany Rd	B
	51119+16		City of Albany	Water Line	Perpendicular	Water Main Hole on east side of alignment	B
	51119+71		City of Albany	Water Line	Perpendicular	(3) Water Main Hole on east side of alignment	B
	51119+90		City of Albany	Water Line	Perpendicular	(2) Water Main Hole on east side of alignment	B
	51120+30		Verizon	UG Utility (Telephone)	Perpendicular	Underground Telephone crossing alignment	B
	51120+30	51134+50	Verizon	UG Utility (Telephone)	Parallel	(2) Underground Telephone on east side of alignment	B
	51131+80		City of Albany	Water Line	Perpendicular	(2) Mains cross at this location	B
	51131+80	51134+50	Verizon	UG Utility (Telephone)	Parallel	Underground Telephone on east side of alignment	B
	51132+00		City of Albany	Water Line	Perpendicular	Mains cross at this location	B
	51132+22	51176+00	National Grid	OH Utility (Electric)	Parallel	Overhead Service - S Albany Rd - Fiber transition to underground	B
	51132+75	51133+15	Town of Bethlehem	Storm Drainage Pipe/Culvert	Parallel	CMP - East Side of alignment	B
	51132+85	51133+15	Town of Bethlehem	Storm Drainage Pipe/Culvert	Parallel	HDPE - West Side of alignment	B
	51133+29	51133+50	Town of Bethlehem	Storm Drainage Pipe/Culvert	Parallel	CMP - East Side of alignment	B
	51134+25	51134+50	Town of Bethlehem	Storm Drainage Pipe/Culvert	Parallel	CMP - East Side of alignment	B
	51134+57		Town of Bethlehem	Storm Drainage Pipe/Culvert	Perpendicular	CMP pipe crossing the alignment	B
	51137+81	51137+95	Town of Bethlehem	Storm Drainage Pipe/Culvert	Parallel	CMP - East Side of alignment	B
	51138+05		National Grid	OH Utility (Electric)	Perpendicular	Overhead Electric Service - S Albany Rd	B
	51138+18	51138+64	Town of Bethlehem	Storm Drainage Pipe/Culvert	Parallel	HDPE - West Side of alignment	B

Champlain Hudson Power Express

Upland Co-Located Utility Summation Matrix

Revision Date: 04/26/2023 -IFC set

Segment(s)	General Location of Utility		Owner	Utility	Utility		Quality Level (A/B/C/D)
	Station (Starting Point for Parallel and Crossing Point for Perpendicular)	Station (Ending Point for Parallel)			Parallel/ Perpendicular	Description (optional)	
	51138+22	51138+51	Town of Bethlehem	Storm Drainage Pipe/Culvert	Parallel	CMP - East Side of alignment	B
	51138+77	51139+08	Town of Bethlehem	Storm Drainage Pipe/Culvert	Parallel	HDPE - East Side of alignment	B
	51140+40	51141+10	Town of Bethlehem	Storm Drainage Pipe/Culvert	Parallel	HDPE - West Side of alignment	B
	51140+62	51141+10	Town of Bethlehem	Storm Drainage Pipe/Culvert	Parallel	HDPE - East Side of alignment	B
	51141+10		Town of Bethlehem	Storm Drainage Pipe/Culvert	Perpendicular	CMP	B
	51142+41		National Grid	OH Utility (Electric)	Perpendicular	Overhead Electric Service - S Albany Rd	B
	51144+00		Town of Bethlehem	Storm Drainage Pipe/Culvert	Perpendicular	CMP - S Albany Rd/Elm St	B
	51144+42		National Grid	OH Utility (Electric)	Perpendicular	Overhead Electric - S Albany Rd/Elm St	B
	51148+00		Town of Bethlehem	Storm Drainage Pipe/Culvert	Perpendicular	CMP - S Albany Rd	B
	51149+88	51150+21	Town of Bethlehem	Storm Drainage Pipe/Culvert	Parallel	CMP - West Side of alignment	B
	51149+92	51150+60	Town of Bethlehem	Storm Drainage Pipe/Culvert	Parallel	CMP - East Side of alignment	B
	51150+25		Town of Bethlehem	Storm Drainage Pipe/Culvert	Perpendicular	ManHole on east side of alignment	B
	51152+39		National Grid	OH Utility (Electric)	Perpendicular	Overhead Electric Service - S Albany Rd	B
	51153+20	51176+00	Time Warner	UG Utility (Telephone)	Parallel	Underground telephone parallel to alignment	B
	51154+15		National Grid	OH Utility (Electric)	Perpendicular	Overhead Electric - S Albany Rd	B
	51154+70	51176+60	National Grid	OH Utility (Electric)	Parallel	Overhead Electric Service - S Albany Rd	B
	51155+55		Town of Bethlehem	Storm Drainage Pipe/Culvert	Perpendicular	Concrete Box - S Albany Rd	B
	51160+40	51160+70	Town of Bethlehem	Storm Drainage Pipe/Culvert	Parallel	CMP - East Side of alignment	B
	51160+45	51160+70	Town of Bethlehem	Storm Drainage Pipe/Culvert	Parallel	CMP - West Side of alignment	B
	51161+50		Verizon	UG Utility (Telephone)	Perpendicular	ManHole on west side of alignment	B
	51162+25	51162+50	Town of Bethlehem	Storm Drainage Pipe/Culvert	Parallel	CMP - West Side of alignment	B
	51165+11		Town of Bethlehem	Storm Drainage Pipe/Culvert	Perpendicular	CMP - S Albany Rd	B
	51166+69	51167+25	Town of Bethlehem	Storm Drainage Pipe/Culvert	Parallel	CMP - West Side of alignment	B
	51167+50	51168+00	Town of Bethlehem	Storm Drainage Pipe/Culvert	Parallel	HDPE - East Side of alignment	B
	51168+08		National Grid	OH Utility (Electric)	Perpendicular	Overhead Electric Service - S Albany Rd	B
	51169+93		National Grid	OH Utility (Electric)	Perpendicular	Overhead Electric Service - S Albany Rd	B
	51169+93	51170+25	Town of Bethlehem	Storm Drainage Pipe/Culvert	Parallel	HDPE - West Side of S Albany Rd	B
	51170+18		National Grid	OH Utility (Electric)	Perpendicular	Overhead Electric Service - S Albany Rd	B
	51170+70	51171+50	Town of Bethlehem	Storm Drainage Pipe/Culvert	Parallel	HDPE - West Side of S Albany Rd	B
	51171+68		National Grid	OH Utility (Electric)	Perpendicular	Overhead Electric Service - S Albany Rd	B
	51172+20		National Grid	OH Utility (Electric)	Perpendicular	Overhead Electric Service - S Albany Rd	B
	51172+70		Time Warner	UG Utility (Telephone)	Perpendicular	Underground coax service connection	B
	51174+90	51175+20	Town of Bethlehem	Storm Drainage Pipe/Culvert	Parallel	West Side of S Albany Rd	B
	51176+00		Time Warner	UG Utility (Telephone)	Perpendicular	Underground telephone (coax) on East side of S Albany Rd	B
	51176+13		National Grid	OH Utility (Electric)	Perpendicular	Overhead Electric Lines - Fiber Tran to Underground	B
	51199+18	51219+00	National Grid	OH Utility (Sub- Transmission)	Parallel	Overhead Electric line parallel to alignment	B

Champlain Hudson Power Express Upland Co-Located Utility Summation Matrix

Revision Date: 04/26/2023 -IFC set

Segment(s)	General Location of Utility		Owner	Utility	Utility		Quality Level (A/B/C/D)
	Station (Starting Point for Parallel and Crossing Point for Perpendicular)	Station (Ending Point for Parallel)			Parallel/ Perpendicular	Description (optional)	
	51199+50	51240+50	Town of Bethlehem	Water Line	Parallel	(2) Water Main Corridor North of Alignment	B
	51207+25		National Grid	OH Utility (Sub-Transmission)	Perpendicular	Overhead line crosses the alignment. Pole over the HDD	B
	51210+50		National Grid	OH Utility (Electric)	Perpendicular	Overhead Transmission Lines	B
	51216+50		National Grid	OH Utility (Sub-Transmission)	Perpendicular	OH Electric line crossing the alignment	B
	51217+97		National Grid	OH Utility (Electric)	Perpendicular	Overhead Transmission Lines	B
	51243+90		National Grid	OH Utility (Transmission)	Perpendicular	Overhead Transmission Lines	B
	51246+50	51276+50	Town of Bethlehem	Water Line	Parallel	(2) Water Main Corridor North of Alignment	B
	51246+60		National Grid	OH Utility (Electric)	Perpendicular	Overhead Electric with communications, South of Bridge St	B
	51247+80		Town of Bethlehem	Storm Drainage Pipe/Culvert	Perpendicular	CMP Pipe on east side of alignment	B
	51254+50		Town of Bethlehem	Storm Drainage Pipe/Culvert	Perpendicular	CMP Pipe on east side of alignment	B
	51271+90		Town of Bethlehem	Storm Drainage Pipe/Culvert	Perpendicular	RCP Pipe on east side of alignment	B
	51277+30	51277+75	Town of Bethlehem	Storm Drainage Pipe/Culvert	Parallel	CMP Pipe on west side of alignment	B
	51277+44	51279+00	National Grid	UG Utility (Electric)	Parallel	OH Electric line parallel to alignment	B
	50102+15		Telergy	UG Utility (Fiber)	Perpendicular	Fiber Crossing the alignment, North of NYS Thruway at CSX RR MP 31.33	B

Utility quality level defined as it follows:

Utility quality level defined as follows:

Four separate quality levels of subsurface utility facility information are generally recognized and are as follows:

Quality Level A (QLA): Quality Level A is the highest degree of accuracy. Information shown on the plans has been obtained by the actual exposure (or verification of previously exposed and surveyed utility facilities) of subsurface utilities, using (typically) minimally intrusive excavation equipment to determine their precise horizontal and vertical positions, as well as their other utility facility attributes. (Shown as QLA)

Quality Level B (QLB): Quality Level B is the second highest degree of accuracy. The information shown on the plans has been obtained through the application of appropriate surface geophysical methods (i.e., underground cameras, radar, sonar, tone outs, etc.) to identify the existence and appropriate horizontal position of subsurface utility facilities. Quality Level B data are reproducible by surface geophysics at any point of their depiction. The information was surveyed to applicable tolerances and reduced onto the plans. No excavations were performed. (Shown as QLB)

Quality Level C (QLC): Quality Level C is the third highest degree of accuracy. The information shown on the plans has been obtained by surveying and plotting visible above-ground utility features and by using professional judgement in correlating this information to Quality Level D information. (Shown as QLC)

Quality Level D (QLD): Quality Level D is the lowest degree of accuracy. The information shown on the plans was derived solely from existing NYSDOT and/or utility company records or recollections. (Shown as QLD)

**Champlain Hudson Power Express
Upland Co-Located Infrastructure
Fact Sheet**

Project Background

- The Champlain Hudson Power Express (CHPE) is a 339-mile underground and underwater high voltage direct current (HVDC) electric transmission line that will import up to 1,250 MW of renewable power from Canada and send it to the New York City metro area.
- Transmission Developers Inc. (TDI) is the developer of the project.
- TDI is owned by Blackstone, a company based in New York.
- The transmission line is fully permitted at the State and Federal level and has been under development for roughly 10 years.
- The upland portion of the transmission line will be located primarily within transportation corridor (railway or highway) rights-of-way.

Construction Timing & EM&CP

- Construction is anticipated for 2022 -2025
- A map of the Project is included as Attachment A.
- Prior to construction commencing, CHPE must file an Environmental Management & Construction Plan (EM&CP) and receive approval from the State for this segment prior to installing the transmission line cables. The EM&CP will include detailed construction means and methods, and schedule. The EM&CP will be subject to public review and your organization will have the opportunity to review it before it becomes final.

- In preparation for that filing, TDI needs to coordinate with owners co-located infrastructure (CI) along this permitted route.
- TDI would like to (1) establish a contact with someone at your company/town who is responsible for this CI; (2) understand your process for discussing utility crossings; and (3) answer questions.

Overview of CI crossings and CHPE construction

- The underground portion of the buried transmission line will be installed in a trench approximately three (3) feet wide and five (5) feet deep and will require minimal or no maintenance during its 60+ year operational life (Typical trench detail - Attachment B).
- Within the trench, the cables will be installed in plastic conduit. There will also be a fiber optic cable installed within the trench.
- Proposed underground installation will be primarily in the shoulders of roadways, under the road's pavement or along the edge of the Canadian Pacific or CSX railroad rights-of-way.
- Once the cables are installed, the ground will be restored.
- Directly over the transmission lines, vegetation maintenance will be required to ensure deep rooted trees do not grow. Otherwise, no maintenance is needed.
- TDI has worked closely with the local towns, NYSDOT, and the Canadian Pacific and CSX railroads regarding CHPE, and it is coordinating the final design with them.
- Depending on the depth of the existing overland CI infrastructure, if within the 15 ft depth range, our preferred approach is to install our HVDC cables

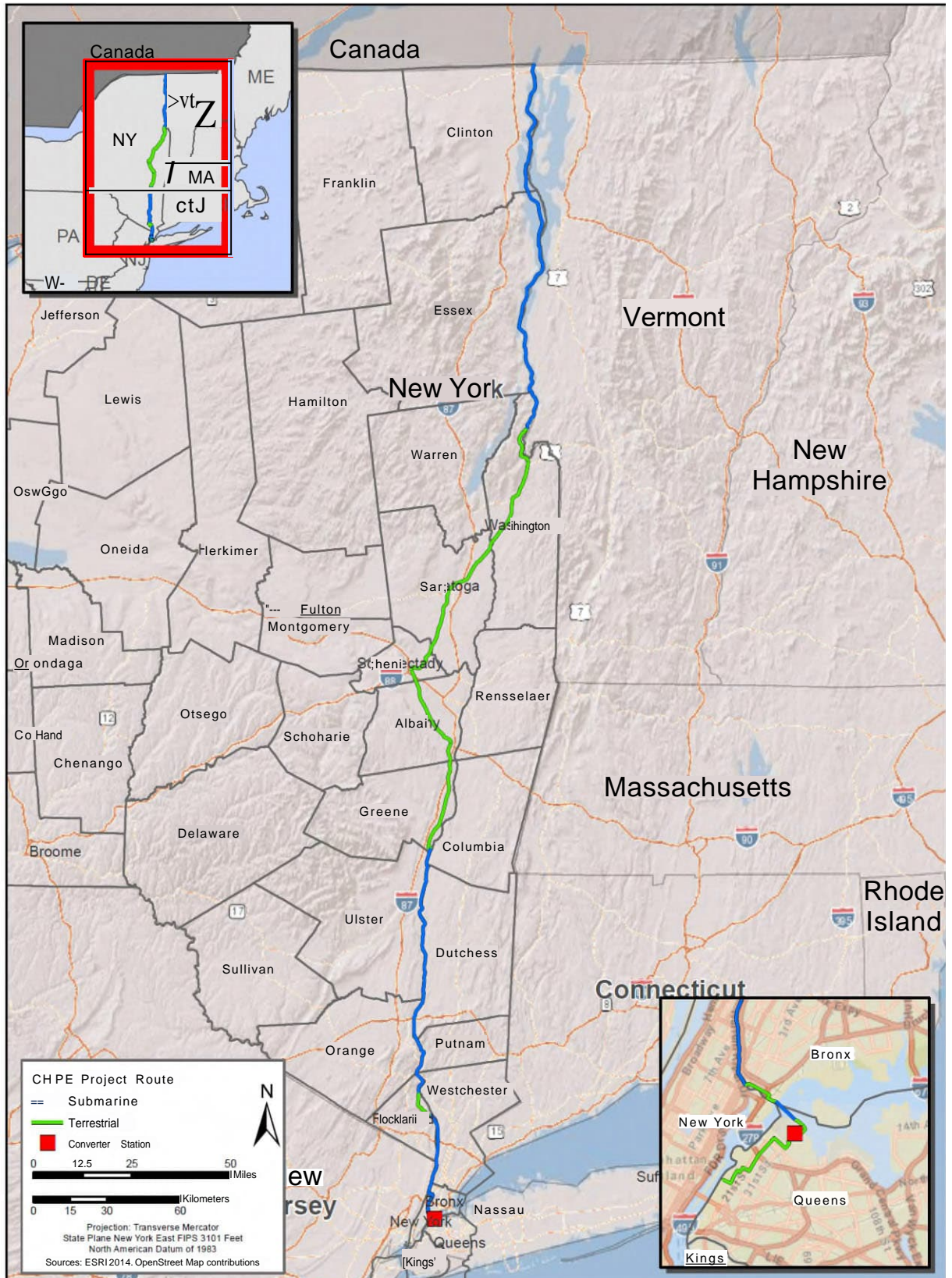
under all buried infrastructure. TDI will accomplish that by working with the CI-owners to establish the best methodology for exposing, supporting, and performing our cable installation under the existing infrastructure. (Typical crossing under CI - Attachment C)

- Our proposal for crossing under CI will follow industry standard crossing methods. Adequate temporary construction supports will be provided for the exposed co-located utilities below grade.
- For deeper CI (usually greater than 15ft) or when there is significant concentration of CI infrastructure within a particular area, horizontal directional drilling (HDD) will be employed to cross under the existing utilities.
- For proposed HDDs, two bored conduits approximately separated at a minimum distance of 15 ft will be installed following the required depth to house the HVDC cables.
- In the event TDI cannot install its cable conduit under buried infrastructure, it will cross over the existing CI utilities via open trench, provided that the minimum cover of 60 inches can be provided over the proposed HVDC cables in roadway and 30 inches of cover in roadside, other vegetated areas and within railroad right-of-way per the below detail (Typical crossing over CI - Attachment D).
- In crossing the existing co-located utilities, TDI and their contractors shall also install the proposed HVDC cables with at least the minimum clearance criteria specified by each individual utility owner.
- Regarding proposed trench installation over existing large municipal storm culverts, an underground utility bridging support structure will be

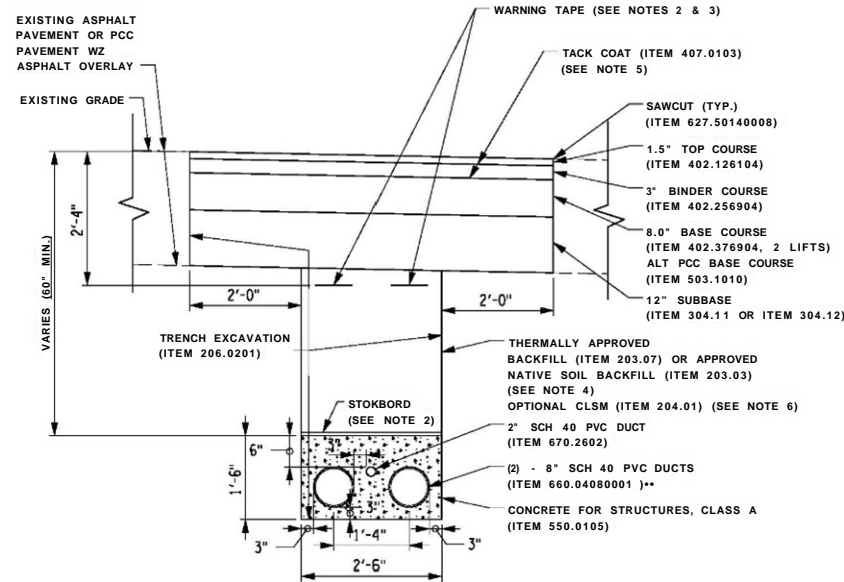
constructed to allow the proposed HVDC cables to be self-supported across the span in the event the storm culverts require future repair or replacement. (Typical CI support- Attachment E.)

- As part of development of a crossing plan for your CI, TDI will work with the respective CI owners, to:
 - o Establish and conduct a subsurface utility survey to determine the precise location of the infrastructure within the limits of the proposed CHPE cable installation, including:
 - Depth from roadway and/or ground surface
 - Physical width and footprint occupied by the CI
 - Existence of CI supporting structures to be avoided
 - o Confirm proposed crossing installation including the requirements for CI temporary support.
 - o Eventually, based on this information, TDI will work with each CI owner to consummate a formal CI agreement as necessary.

Attachment A



Attachment B



TYPICAL FLAT CABLE ALIGNMENT IN DUCTBANK
TRENCH CROSS SECTION (ROADWAY INSTALLATION)

SCALE: 1\"/>

ITEM	DESCRIPTION
203.07	EMBANKMENT IN PLACE
203.07	SELECT GRANULAR FILL
206.0201	CONTROLLED LOW STRENGTH MATERIAL
206.0201	TRENCH AND CULVERT EXCAVATION
304.11	SUBBASE COURSE, TYPE 1
304.12	SUBBASE COURSE, TYPE 2
402.1261	12.5 FI TOP COURSE HMA, 60 SERIES COMPACTION
402.2561	25 F9 BINDER COURSE HMA, 60 SERIES COMPACTION
402.3761	37.5 F9 BASE COURSE HMA, 60 SERIES COMPACTION
407.0103	STRAIGHT TACK COAT
555.0105	CONCRETE FOR STRUCTURES, CLASS A
627.50140008	CUTTING PAVEMENT
660.04080001**	FURNISH AND INSTALL PVC UTILITY CONDUIT - 8 INCH
670.2602	RIGID PLASTIC CONDUIT, 2"

*SPECIAL SPEC
**SPECIAL NOTE:

FOLLOW SPECIAL SPECIFICATION 660.04080001. CONDUIT SIZE, FITTINGS AND CONNECTIONS TO BE REVISED TO 8" AND SCHEDULE TO BE SCH 40.

NOTES:

1. FILL MATERIAL SHALL HAVE THERMAL RESISTIVITY OF 1.0 K_mZW OR LESS.
2. FITTINGS, CONNECTIONS, WARNING TAPE, AND STOKBORD WILL BE INCLUDED UNDER ITEM 660.04080001.
3. WARNING TAPE DEPTH TO MEET THE REQUIREMENTS OF NEC SECTION 300.5(D)(3).
4. FOR INSTALLATION NOT LOCATED IN ROADWAYS. APPROVED NATIVE SOIL BACKFILL WILL EXTEND TO WITHIN FOUR (4) INCHES OF EXISTING GRADE.
5. TACK COAT SHALL BE APPLIED TO ALL EXPOSED EDGES AND BETWEEN EVERY LIFT.

ALIGNED ON: SIGNATURE STAMP	APPROVED ON: SIGNATURE STAMP
-----------------------------------	------------------------------------

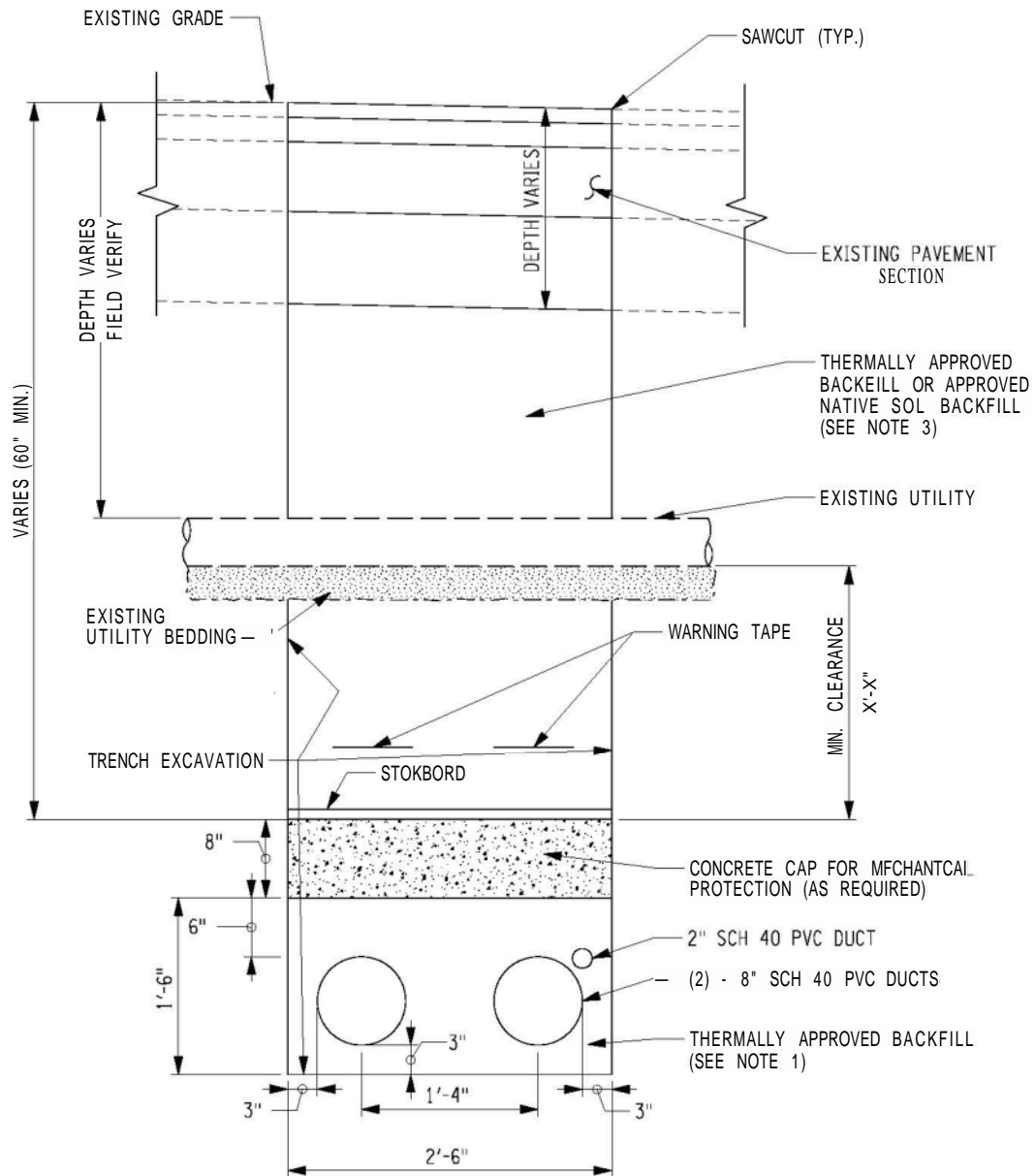
IT IS A VIOLATION OF LAW FOR ANY PERSON, UNLESS THEY ARE ACTING UNDER THE DIRECTION OF A LICENSED PROFESSIONAL ENGINEER, ARCHITECT, LANDSCAPE ARCHITECT, OR LAND SURVEYOR, TO ALTER AN ITEM IN ANY WAY. IF AN ITEM BEARING THE STAMP OF A LICENSED PROFESSIONAL IS ALTERED, THE ALTERING ENGINEER, ARCHITECT, LANDSCAPE ARCHITECT, OR LAND SURVEYOR SHALL SIGN THE DOCUMENT AND INCLUDE THE NOTATION "ALTERED BY" FOLLOWED BY THEIR SIGNATURE, THE DATE OF SUCH ALTERATION, AND A SPECIFIC DESCRIPTION OF THE ALTERATION.

REVISIONS			
DATE	DESCRIPTION	BY	SYM

TOUOKSIOHOCVELOHKS.HC.
1301 AVENUE OF THE AMERICAS
NEW YORK, NY 10019-6022

A=COM

TITLE OF PROJECT CLAMPLAIN HUDSON POTER EXPRESS	CONTRACT NUMBER: 60323056
LOCATION OF PROJECT	DATE: 03/04/2021
TYPICAL TRENCH CROSS SECTION WITH PVC CONDUIT IN DXTBAM	DRAWING NUMBER:



TYPICAL UTILITY CROSSING DETAIL

NOTES:

NOT TO SCALE

1. FILL MATERIAL SHALL HAVE THERMAL RESISTIVITY OF 1.0 K*m/W OR LESS.
2. WARNING TAPE DEPTH TO MEET THE REQUIREMENTS OF NEC SECTION 300.5(D)(3).
3. FOR INSTALLATION NOT LOCATED IN ROADWAYS, APPROVED NATIVE SOL BACKFILL WILL EXTEND TO WITHIN FOUR M) INCHES OF EXISTING GRADE.

<p>CHAMPLAIN HUDSON POWER EXPRESS TRANSMISSION DEVELOPERS, INC.</p> <p>AECOM</p>	PRWEC TITLE	LOCATIONS	
	DRAWING TITLE		DATE: 07/07/2020
	TYPICAL UTILITY CROSSING DETAIL		CPAWNCHUMBER: FIG XX

Attachment E

AZCOM

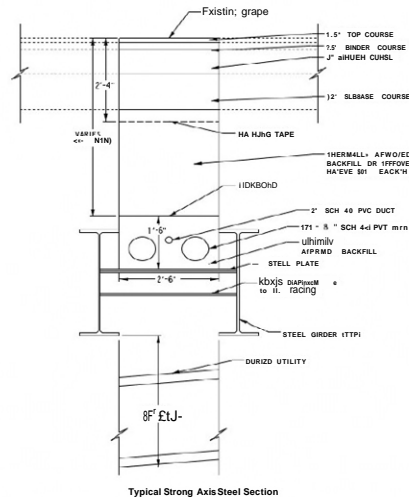
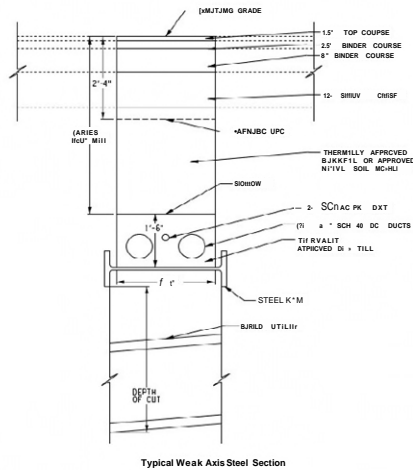
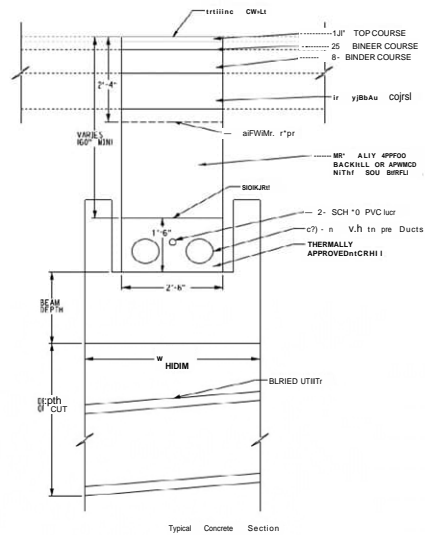
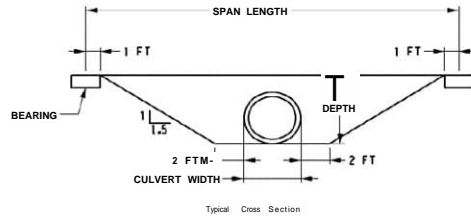
AECUM U.S.A., INC.
40 British American Blvd.
Latham, NY 12110

PROJECT NO.	80323056		
Prepared By:	IMP	Date	12/11/2020
Reviewed By:	MWO	Date	12/11/2020
Approved By:		Date	

CALCULATION SHEET

Client TDI	Subject	Underground	LJLility Support
Projct: CHPE			

Description:	Preliminary	Review of Utility Support Options	over culvert replacements
Details:			



Typical Weak Axis Steel Section

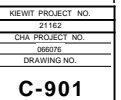
Typical Strong Axis Steel Section

Support Sizes

		Depth of Cut (ft)																			
		5	6	7	8	9	10	11	12	13	14	15	16	17	18	19	20				
Cable Width (in)	1.38	1-A	2-A	3-C	4-D	5-E	5	5	5	5	5	6	6	6	6	6	6				
	1.65	1-A	2-A	3-C	4-D	5-E	5	5	5	5	5	6	6	6	6	6	6				
	1.92	1-A	2-A	3-C	4-D	5-E	5	5	5	5	5	6	6	6	6	6	6				
	2.50	1-A	3-B	3-C	4-D	5-E	5	5	5	5	5	6	6	6	6	6	6				
	3.08	1-A	3-B	4-D	5-D	5	5	5	5	5	5	6	6	6	6	6	6				
	3.67	1-A	3-B	4-D	5-L1	5	5	5	5	5	5	6	6	6	6	6	6				
	4.00	1-A	3-B	4-D	5-P	5	5	5	5	5	5	6	6	6	6	6	6				
	4.50	2-A	3-C	4-D	5-F	5	5	5	5	5	5	6	6	6	6	6	6				
	5.00	2-A	3-C	4-D	5-F	5	5	5	5	5	5	6	6	6	6	6	6				
	5.50	2-A	3-C	4-D	5-F	5	5	5	5	5	5	6	6	6	6	6	6				

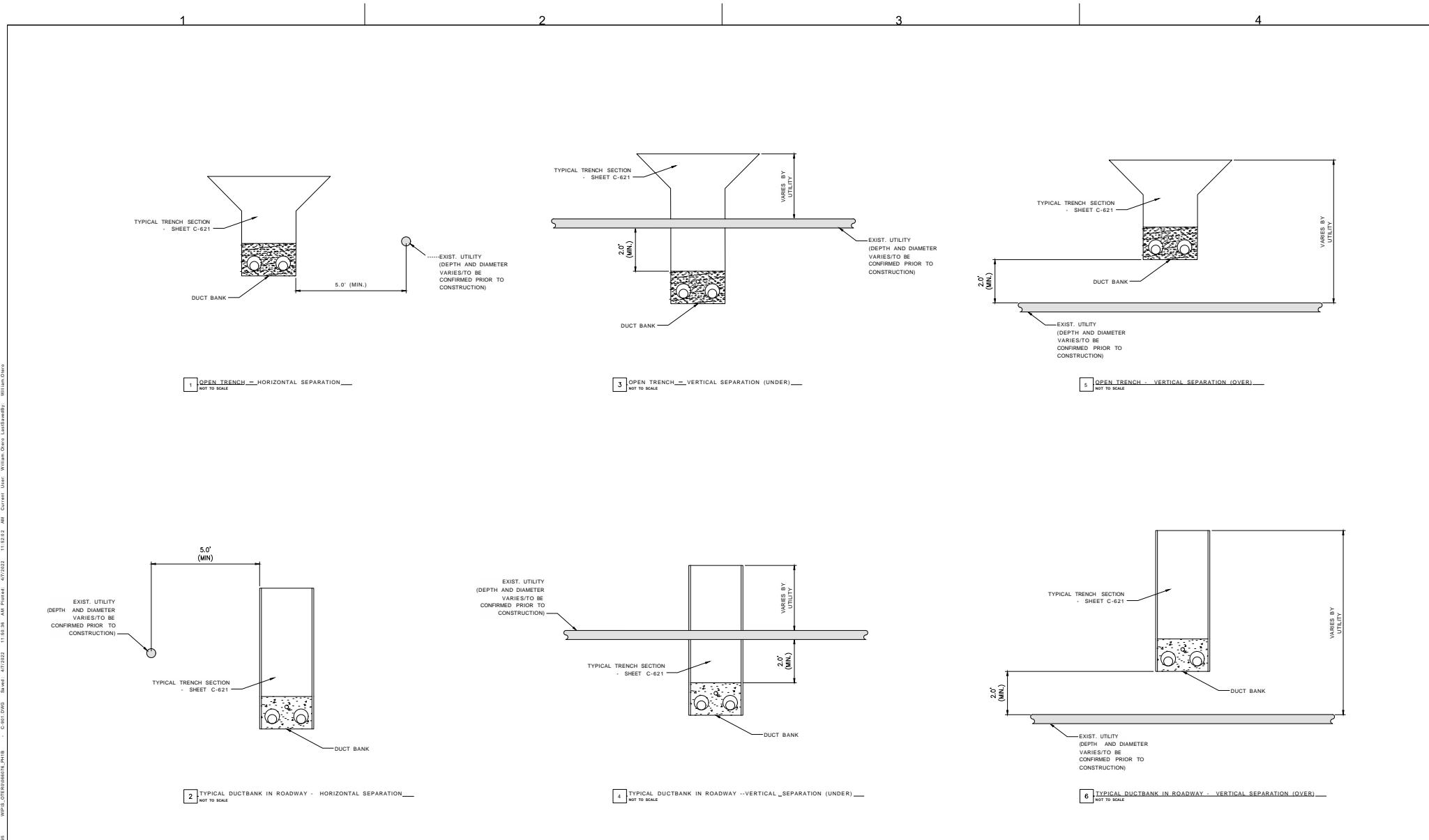
Type	Steel Beam Size
1	W36X231 Weak Axis Support
2	W36X247 Weak Axis Support
3	W36X330 Weak Axis Support
4	W36X395 Weak Axis Support
5	(2)W36X135 - Strong Axis Support
6	(2)W36X231 - Strong Axis Support

Type	Concrete Beam Width	Beam Depth
	in	in
A	52	15
B	52	20
C	52	24
D	52	30
E	52	36



P	DRAWN BY: WSO DESIGNED BY: WSO APPROVED BY:	SCALE	AS NOTED	DATE	11/02/2021
		REV. NO.	A	SH. NO.	XXX OF XXX

W:\P\PROJECTS\CHAMPLAIN POWER EXPRESS\CHAMPLAIN POWER EXPRESS - ROUTE 22\DWG\CHAMPLAIN POWER EXPRESS - ROUTE 22 - UTILITY TYPICAL SEPARATION DETAILS.dwg
User: William Chen
Date: 11/25/22
Time: 11:52:52 AM
Plot: 4/7/2022 11:52:52 AM
Printer: HP-RT-DWG
Scale: 1/8"=1'-0"
Sheet: 1 of 1
Title: CHAMPLAIN HUDSON POWER EXPRESS PACKAGE 1 B - ROUTE 22: DRESDEN - WHITEHALL UTILITY TYPICAL SEPARATION DETAILS



			IT IS A VIOLATION OF LAW FOR ANY PERSON, UNLESS THEY ARE ACTING UNDER THE DIRECTION OF A LICENSED PROFESSIONAL ENGINEER, ARCHITECT, LANDSCAPE ARCHITECT OR LAND SURVEYOR TO ALTER AN ITEM IN ANY WAY IF AN ITEM BEARING THE STAMP OF A LICENSED PROFESSIONAL IS ALTERED. THE ALTERING ENGINEER, ARCHITECT, LANDSCAPE ARCHITECT OR LAND SURVEYOR SHALL STAMP THE DOCUMENT AND INCLUDE THE NOTATION "ALTERED BY" FOLLOWED BY THEIR SIGNATURE, THE DATE OF SUCH ALTERATION, AND A SPECIFIC DESCRIPTION OF THE ALTERATION.	<table border="1"><tr><td>No.</td><td>DATE</td><td>SUBMITTAL/REVISION DESCRIPTION</td><td>DB</td><td>APP</td></tr><tr><td>A</td><td>4/8/22</td><td>100% FINAL SUBMISSION</td><td>WSO</td><td></td></tr></table>				No.	DATE	SUBMITTAL/REVISION DESCRIPTION	DB	APP	A	4/8/22	100% FINAL SUBMISSION	WSO		CHAMPLAIN HUDSON POWER EXPRESS PACKAGE 1 B - ROUTE 22: DRESDEN - WHITEHALL UTILITY TYPICAL SEPARATION DETAILS		KIEWIT PROJECT NO. 21162	
				No.	DATE	SUBMITTAL/REVISION DESCRIPTION	DB	APP													
A	4/8/22	100% FINAL SUBMISSION	WSO																		
DRAWN BY: ¹ WSO DESIGNED BY: ¹ WSO APPROVED BY: ¹ WSO		CMA PROJECT NO. 066076																			
				SCALE REV. NO.		AS NOTED DATE A (SHNG)		DRAWING NO. C-901 XXX OF XXX													

Package 5B (Segment 9) CI Crossing Agreement Status Details

Utility Owner	Utility Type (Quantity)	Agreement Status/Date	Details	RUA Notes
Gateway Delmar	Underground Gas (1)	Documentation showing agreement is in place 10/27/22.	<p>10/27/22 CI Owner responded, stating it appears there is no conflict.</p> <p>10/28/22 reviewed CI Owner's utility vs. CHPE alignment and concluded no conflict exists.</p>	NA
Lumen	Underground Fiber (2)	Documentation showing agreement is in place 9/21/22.	<p>9/20/22 sent draft CI Owner package, asked for feedback.</p> <p>9/21/22 CI Owner stated "This section of the CHPE through the Selkirk, NY rail yard is clear of Lumen facilities. Lumen has no conduits/cables along the rail ROW in this area."</p> <p>IFC CI Owner final custom format package to be provided.</p>	NA
National Grid	Overhead Electric Distribution (29); Overhead Electric Transmission (2)	<p>Biweekly meetings, comments on location and crossings.</p> <p>Comments on this segment received in January. Kiewit responded in March and April. NG reviewing.</p>	<p>5/4/23 received statement³ from National Grid.</p>	NA

Package 5B (Segment 9) CI Crossing Agreement Status Details

Utility Owner	Utility Type (Quantity)	Agreement Status/Date	Details	RUA Notes
Time Warner	Overhead Fiber (2); Underground Fiber (5); Underground Telephone (3)	Documentation showing agreement is in place 4/28/23.	4/27/23 sent email statement ⁽¹⁾ . 4/28/23 CI Owner replied "This statement stands true, my comments regarding the drawings you submitted are based on our current facility locations. We understand that your project will not impact our facilities and any interaction with your project and our exi[s]ting plant will be properly documented and located per NYS regulations." IFC CI Owner final custom format package to be provided.	NA
Verizon	Underground Telephone (5)	Documentation showing agreement is in place 4/28/23.	I 4/28/23 CI Owner noted "...Everything in it looks acceptable to me." IFC CI Owner final custom format package to be provided.	NA
Town of Bethlehem	Storm Sewer (12) Water Line (5)	Agreement in place.		RUA executed on March 23, 2022.

Package 5B (Segment 9) CI Crossing Agreement Status Details

Utility Owner	Utility Type (Quantity)	Agreement Status/Date	Details	RUA Notes
	Storm drainage pipe/culvert (41)			
City of Albany	Water Line (9)	CI Owner provided crossing information and offered written technical approval; details of Crossing Agreement to be worked out. ⁴	<p>5/5/23 – CHPE sent request⁴ regarding RUA that is still under Negotiation.</p> <p>5/8/23 – received statement of agreement from CI Owner: “The design reflects our feedback.”</p>	NA; CHPE not crossing city-owned roads or lands (Crossing Agreement only).

Note:

- 1) Emailed Statement:** As you know, CHPE has been in ongoing dialogue with you regarding the design of CHPE’s facilities in the proximity of your utility. You understand from CHPE that the design reflects your feedback. The designs in the proximity of your utility remain subject to your final comments and approval, which will be memorialized prior to the commencement of any construction activities in the vicinity of your utility.

CHPE kindly requests that you reply to this email as soon as possible confirming the statement above is accurate, or rephrase as you deem appropriate.

- 2) Statement from national Grid:** With respect to Segments 8/9 (Design packages 5A& 5B) CHPE has been in ongoing consultation with National Grid regarding the design of CHPE’s facilities within the proximity of our utilities along its proposed alignment. To date, our team is continuing to work with the CHPE design, construction, and real estate occupancy teams to ensure that all elements of the proposed collocation interaction are in conformance with National Grid’s requirements. While these consultations are progressing and expect we will be able to reach agreement, the CHPE designs within the proximity of National Grid utilities remain subject to our final comments, conditions, and approval, which will be memorialized in the EM&CP documents and appropriate agreements prior to the commencement of any construction activities on National Grid property and/or proximate to National Grid assets.

Package 5B (Segment 9) CI Crossing Agreement Status Details

Utility Owner	Utility Type (Quantity)	Agreement Status/Date	Details	RUA Notes
---------------	-------------------------	-----------------------	---------	-----------

- 3) **Statement from National Grid:** With respect to Segments 8/9 (Design packages 5A& 5B) CHPE has been in ongoing consultation with National Grid regarding the design of CHPE's facilities within the proximity of our utilities along its proposed alignment. To date, our team is continuing to work with the CHPE design, construction, and real estate occupancy teams to ensure that all elements of the proposed collocation interaction are in conformance with National Grid's requirements. While these consultations are progressing and expect we will be able to reach agreement, the CHPE designs within the proximity of National Grid utilities remain subject to our final comments, conditions, and approval, which will be memorialized in the EM&CP documents and appropriate agreements prior to the commencement of any construction activities on National Grid property and/or proximate to National Grid assets.
- 4) **Request sent to Municipalities whose RUA is still under Negotiation:** As you know, CHPE has been in ongoing dialogue with you regarding the design of CHPE's facilities within your municipality including utility crossings. You understand from CHPE that the design reflects your feedback. The designs in the proximity of your municipally owned utilities remain subject to your final comments and approval, which will be memorialized prior to the commencement of any construction activities in the vicinity of your utility. As part of the State's EM&CP process, they have requested we provide updates on all interactions with private and public utility owners. In turn, we kindly request that you reply to this email as soon as possible confirming the statement above is accurate (or rephrase as you deem appropriate). If we don't receive a response from you, we will assume that you agree with the statements above, subject to your receipt and review of the final requested plans.

Package 5B
CI Owner Consultations

Cole, Benjamin

From: William Simcoe <wsimcoe@albanyny.gov>
Sent: Monday, May 8, 2023 3:04 PM
To: Cole, Benjamin; Cornelius O Connor
Cc: Laura Darling; Josh Bagnato; Gibson, Robert; Grassi, Laura
Subject: RE: CHPE Collocated Infrastructure Details_EM&CP 5B_Albany

Ben,

The design reflects our feedback. Thanks.

William D. Simcoe, P.E.
Deputy Commissioner
City of Albany Department of Water & Water Supply
10 North Enterprise Drive
Albany, NY 12204

From: Cole, Benjamin <Ben.Cole@wsp.com>
Sent: Friday, May 5, 2023 2:23 PM
To: William Simcoe <wsimcoe@albanyny.gov>; Cornelius O Connor <noconnor@albanyny.gov>
Cc: Laura Darling <ldarling@youngsommer.com>; Josh Bagnato <josh.bagnato@transmissiondevelopers.com>; Gibson, Robert <Bob.Gibson@wsp.com>; Grassi, Laura <Laura.Grassi@wsp.com>
Subject: RE: CHPE Collocated Infrastructure Details_EM&CP 5B_Albany

ATTENTION: This email came from an external source. Please do not open attachments or click on links from unknown senders or unexpected emails.

Hi Mr. Simcoe,

Please see the statement below and the request in the second paragraph.

Thank You,

Ben Cole

ben.cole@wsp.com

Statement:

As you know, CHPE has been in ongoing dialogue with you regarding the design of CHPE's facilities within your municipality including utility crossings. You understand from CHPE that the design reflects your feedback. The designs in the proximity of your municipally owned utilities remain subject to your final comments and approval, which will be memorialized prior to the commencement of any construction activities in the vicinity of your utility.

As part of the State's EM&CP process, they have requested we provide updates on all interactions with private and public utility owners. In turn, we kindly request that you reply to this email as soon as possible confirming the statement

above is accurate (or rephrase as you deem appropriate). If we don't receive a response from you, we will assume that you agree with the statements above, subject to your receipt and review of the final requested plans.

End of statement.

=====

From: William Simcoe <wsimcoe@albanyny.gov>
Sent: Wednesday, April 26, 2023 7:47 AM
To: Cole, Benjamin <Ben.Cole@wsp.com>; Cornelius O Connor <noconnor@albanyny.gov>
Subject: RE: CHPE Collocated Infrastructure Details_EM&CP 5B_Albany

Ben,

I think the new route addresses our concerns. I will discuss the crossing of our easement with our legal counsel.

William D. Simcoe, P.E.
Deputy Commissioner
City of Albany Department of Water & Water Supply
10 North Enterprise Drive
Albany, NY 12204

From: Cole, Benjamin <Ben.Cole@wsp.com>
Sent: Monday, April 24, 2023 8:46 AM
To: William Simcoe <wsimcoe@albanyny.gov>; Cornelius O Connor <noconnor@albanyny.gov>
Subject: CHPE Collocated Infrastructure Details_EM&CP 5B_Albany

ATTENTION: This email came from an external source. Please do not open attachments or click on links from unknown senders or unexpected emails.

Good Morning Mr. Simcoe,

At the following link please find the most current plan and profile drawing set depicting where the CHPE alignment interacts with your infrastructure.

[CHPE-SUB-0095.01-00-City of Albany - CI Owner Package - 5B - 03-09-2023.pdf](#)

Please let me know any comments or feedback that you may have, or note any conflicts on the drawings. Also, please let me know next steps in obtaining a crossing agreement.

Thank You,

Ben Cole

ben.cole@wsp.com

NOTICE: This communication and any attachments ("this message") may contain information which is privileged, confidential, proprietary or otherwise subject to restricted disclosure under applicable law. This message is for the sole use of the intended recipient(s). Any unauthorized use, disclosure, viewing, copying, alteration, dissemination or distribution of, or reliance on, this message is strictly prohibited. If you have received this message in error, or you are not an

authorized or intended recipient, please notify the sender immediately by replying to this message, delete this message and all copies from your e-mail system and destroy any printed copies.

-LAEmHhHzdJz8ITWfa4Hgs7pbKl

Confidentiality Notice: This fax/e-mail transmission, with accompanying records, is intended only for the use of the individual or entity to which it is addressed and may contain confidential and/or privileged information belonging to the sender, including individually identifiable health information subject to the privacy and security provisions of HIPAA. This information may be protected by pertinent privilege(s), e.g., attorney-client, doctor-patient, HIPAA etc., which will be enforced to the fullest extent of the law. If you are not the intended recipient, you are hereby notified that any examination, analysis, disclosure, copying, dissemination, distribution, sharing, or use of the information in this transmission is strictly prohibited. If you have received this message and associated documents in error, please notify the sender immediately for instructions. If this message was received by e-mail, please delete the original message

Confidentiality Notice: This fax/e-mail transmission, with accompanying records, is intended only for the use of the individual or entity to which it is addressed and may contain confidential and/or privileged information belonging to the sender, including individually identifiable health information subject to the privacy and security provisions of HIPAA. This information may be protected by pertinent privilege(s), e.g., attorney-client, doctor-patient, HIPAA etc., which will be enforced to the fullest extent of the law. If you are not the intended recipient, you are hereby notified that any examination, analysis, disclosure, copying, dissemination, distribution, sharing, or use of the information in this transmission is strictly prohibited. If you have received this message and associated documents in error, please notify the sender immediately for instructions. If this message was received by e-mail, please delete the original message

Cole, Benjamin

From: Cole, Benjamin
Sent: Friday, May 5, 2023 2:23 PM
To: plafond@schenectadyny.gov
Cc: Laura Darling; Josh Bagnato; Gibson, Robert; Grassi, Laura
Subject: RE: CHPE Collocated Infrastructure Details_EM&CP 4B_City of Schenectady

Good Afternoon,

Please see the statement below and the request in the second paragraph.

Thank You,

Ben Cole

ben.cole@wsp.com

Statement:

As you know, CHPE has been in ongoing dialogue with you regarding the design of CHPE's facilities within your municipality including utility crossings. You understand from CHPE that the design reflects your feedback. The designs in the proximity of your municipally owned utilities remain subject to your final comments and approval, which will be memorialized prior to the commencement of any construction activities in the vicinity of your utility.

As part of the State's EM&CP process, they have requested we provide updates on all interactions with private and public utility owners. In turn, we kindly request that you reply to this email as soon as possible confirming the statement above is accurate (or rephrase as you deem appropriate). If we don't receive a response from you, we will assume that you agree with the statements above, subject to your receipt and review of the final requested plans.

End of statement.

=====

From: Cole, Benjamin
Sent: Friday, October 14, 2022 11:15 AM
To: plafond@schenectadyny.gov
Subject: RE: CHPE Collocated Infrastructure Details_EM&CP 4B_City of Schenectady

Good Morning,

I'm checking in to see if you have comments on the information below or the Plans/Profiles available at the link (please see also the attached message sent yesterday, regarding CHPE Package 5A). Copying the links to these two sets of plans/profiles here for convenience:

Links:

[CHPE-SUB-0093.01-00-Package 4B_City of Schenectady Co-Located Infrastructure 2022-09-13.pdf](#)
[Package 5A_City of Schenectady Water Co-Located Infrastructure 2022-08-22.pdf](#)

Thank You,

Ben Cole

ben.cole@wsp.com

From: Cole, Benjamin

Sent: Wednesday, September 21, 2022 6:25 PM

To: plafond@schenectadyny.gov

Subject: CHPE Collocated Infrastructure Details_EM&CP 4B_City of Schenectady

Dear Mr. Lafond,

I'm writing on behalf of Transmission Developers Inc. ("TDI"), owner of the Champlain Hudson Power Express ("CHPE" or "Project") transmission line project. The purpose of this correspondence is to provide more detailed information related to how the CHPE project is designed to interact with your infrastructure and to solicit feedback from your company regarding the Project's alignment.

As you may recall from previous communications from Rick Chase at TDI, the CHPE is a fully permitted 339-mile underground and underwater high voltage direct current (HVDC) electric transmission line that will import up to 1,250 MW of renewable power from Canada and send it to the New York City metro area (see <https://chpexpress.com> for additional information).

At the link below please find design drawings of the proposed CHPE alignment where it involves your infrastructure within the Segment 6 Environmental Management and Construction Plan ("EM&CP") Package 4B.

Link: [CHPE-SUB-0093.01-00-Package 4B_City of Schenectady Co-Located Infrastructure_2022-09-13.pdf](#)

TDI will be submitting these plans to the New York State Public Service Commission ("PSC") for portions of the Project in the Towns of Ballston, Clifton Park, Glenville, and Rotterdam. This information is a follow-up to previous communications to you providing general project information and typical infrastructure crossing drawings.

Please review the linked information regarding the CHPE alignment relating to your infrastructure and provide concurrence with the Project's cable separation and alignment and any feedback to me (ben.cole@wsp.com) by October 3, 2022. It is important to TDI that the construction and operation of the CHPE project does not interfere with the continued operation of your infrastructure.

To the extent that the CHPE alignment interacts with your infrastructure within future Segment EM&CP submissions, we will provide you with similar drawings in advance of those filings. I look forward to coordinating with you as we finalize the design of the CHPE project.

Sincerely,

Ben Cole

WSP USA, on behalf of TDI

ben.cole@wsp.com

Cole, Benjamin

From: Cole, Benjamin
Sent: Friday, May 5, 2023 2:23 PM
To: 'Greg Wier'
Cc: 'barberp@togny.org'; Laura Darling; Josh Bagnato; Gibson, Robert; Grassi, Laura
Subject: RE: KWT - Overland: New Transmittal - WSP-GLD-TRNS-0130 - CHPE Package 5A Co-Located Infrastructure Matrix and Drawings - Town of Guilderland

Good Afternoon All,

Please see the statement below and the request in the second paragraph.

Thank You,

Ben Cole

ben.cole@wsp.com

Statement:

As you know, CHPE has been in ongoing dialogue with you regarding the design of CHPE's facilities within your municipality including utility crossings. You understand from CHPE that the design reflects your feedback. The designs in the proximity of your municipally owned utilities remain subject to your final comments and approval, which will be memorialized prior to the commencement of any construction activities in the vicinity of your utility.

As part of the State's EM&CP process, they have requested we provide updates on all interactions with private and public utility owners. In turn, we kindly request that you reply to this email as soon as possible confirming the statement above is accurate (or rephrase as you deem appropriate). If we don't receive a response from you, we will assume that you agree with the statements above, subject to your receipt and review of the final requested plans.

End of statement.

=====

From: Cole, Benjamin
Sent: Tuesday, April 4, 2023 12:04 PM
To: Greg Wier <wierg@togny.org>
Cc: barberp@togny.org
Subject: RE: KWT - Overland: New Transmittal - WSP-GLD-TRNS-0130 - CHPE Package 5A Co-Located Infrastructure Matrix and Drawings - Town of Guilderland

Thank you Sir.

For your records, at the link please find the most recent drawing set available.

[CHPE-SUB-0094.02-00-Package 5A Town of Guilderland Co-Located Infrastructure 2022-08-22.pdf](#)

Thanks,

Ben Cole

ben.cole@wsp.com

From: Greg Wier <wierg@togny.org>

Sent: Friday, October 14, 2022 10:46 AM

To: Cole, Benjamin <Ben.Cole@wsp.com>

Cc: barberp@togny.org

Subject: Re: KWT - Overland: New Transmittal - WSP-GLD-TRNS-0130 - CHPE Package 5A Co-Located Infrastructure Matrix and Drawings - Town of Guilderland

I have no comments. It appears that the scope of the project will stay within the limits of the CSX Rail property and should not impact the Town of Guilderland infrastructures.

Gregory J. Wier

Highway Superintendent

Town of Guilderland

6338 French's Mill Rd

Altamont, NY 12009

On Thu, Oct 13, 2022 at 6:30 PM Cole, Benjamin <Ben.Cole@wsp.com> wrote:

Good Evening,

I'm checking in to see if you have comments on the information below and plans/profiles available at the link.

Thank You,

Ben Cole

ben.cole@wsp.com

From: CHPE-KWT@portal3.pbid.com <CHPE-KWT@portal3.pbid.com>

Sent: Thursday, September 8, 2022 2:01 PM

To: barberp@togny.org; wierg@togny.org

Cc: CHPE-KWT@portal3.pbid.com

Subject: KWT - Overland: New Transmittal - WSP-GLD-TRNS-0130 - CHPE Package 5A Co-Located Infrastructure Matrix and Drawings - Town of Guilderland

Workflow Notification

A new Transmittal has been entered into the system.

Transmittal #: WSP-GLD-TRNS-0130

Subject: CHPE Package 5A Co-Located Infrastructure Matrix and Drawings - Town of Guilderland

ATTN: Peter Barber, Gregory Wier

From: Ben Cole

Issue Purpose: For Your Information

Date Transmitted: 9/2/2022

Comments: Good Afternoon,

I'm writing on behalf of Transmission Developers Inc. ("TDI"), owner of the Champlain Hudson Power Express ("CHPE" or "Project") transmission line project. The purpose of this correspondence is to provide more detailed information related to how the CHPE project is designed to interact with your infrastructure and to solicit feedback from your company regarding the Project's alignment.

The CHPE is a fully permitted 339-mile underground and underwater high voltage direct current (HVDC) electric transmission line that will import up to 1,250 MW of renewable power from Canada and send it to the New York City metro area (see <https://chpexpress.com> for additional information).

At the enclosed link please find design drawings of the proposed CHPE alignment where it involves your infrastructure within the CHPE Package referenced in the title of this message.

TDI will be submitting these plans to the New York State Public Service Commission ("PSC") for approval prior to construction.

Please review the linked information regarding the CHPE alignment relating to your infrastructure and provide concurrence with the Project's cable separation and alignment and any feedback to ben.cole@wsp.com by September 16, 2022.

It is important to TDI that the construction and operation of the CHPE project does not interfere with the continued operation of your infrastructure.

To the extent that the CHPE alignment interacts with your infrastructure within future Segment EM&CP submissions, we will provide you with similar drawings in advance of those filings. I look forward to coordinating with you as we finalize the design of the CHPE project.

Thank You,

Ben Cole

WSP USA, on behalf of TDI

ben.cole@wsp.com

File Links (link will be active for 60 days):

File Name
Package 5A Town of Guilderland Co-Located Infrastructure 2022-08-22.pdf

CHPE SharePoint users can access the record and file(s) using the link below:

[https://chpe.pbid.com/KWT/ layouts/15/DocSetHome.aspx?id=/KWT/Transmittals/CHPE%20Package%205A%20Co-Located%20Infrastructure%20Matrix%20and%20Drawings%20-%20Town%20of%20Guilderland&OpenIn=browser](https://chpe.pbid.com/KWT/layouts/15/DocSetHome.aspx?id=/KWT/Transmittals/CHPE%20Package%205A%20Co-Located%20Infrastructure%20Matrix%20and%20Drawings%20-%20Town%20of%20Guilderland&OpenIn=browser)

Disclaimer: The information contained in this email, including linked content, is considered confidential and may be privileged. It is intended only for the person or entity to which it is addressed and must not be sent or made accessible to other recipients. If you are not the intended recipient, you are hereby notified that any review, retransmission, dissemination or other use of, or taking any action in reliance upon this information is strictly prohibited. If you have received this email in error, kindly notify chpedoccontrol@portal3.pbid.com and delete the original message from your system.

Thank You.

NOTICE: This communication and any attachments ("this message") may contain information which is privileged, confidential, proprietary or otherwise subject to restricted disclosure under applicable law. This message is for the sole use of the intended recipient(s). Any unauthorized use, disclosure, viewing, copying, alteration, dissemination or distribution of, or reliance on, this message is strictly prohibited. If you have received this message in error, or you are not an authorized or intended recipient, please notify the sender immediately by replying to this message, delete this message and all copies from your e-mail system and destroy any printed copies.

-LAEmHhHzdJzBITWfa4Hgs7pbKI

Cole, Benjamin

From: Cole, Benjamin
Sent: Friday, May 5, 2023 2:23 PM
To: cjdodson@rotterdamny.org; mcollins@rotterdamny.org; llamora@rotterdamny.org
Cc: Fred C. Mastroianni; Laura Darling; Josh Bagnato; Gibson, Robert; Grassi, Laura
Subject: RE: CHPE Collocated Infrastructure Details_EM&CP 4B and 5A_Town of Rotterdam

Good Afternoon All,

Please see the statement below and the request in the second paragraph.

Thank You,

Ben Cole

ben.cole@wsp.com

Statement:

As you know, CHPE has been in ongoing dialogue with you regarding the design of CHPE's facilities within your municipality including utility crossings. You understand from CHPE that the design reflects your feedback. The designs in the proximity of your municipally owned utilities remain subject to your final comments and approval, which will be memorialized prior to the commencement of any construction activities in the vicinity of your utility.

As part of the State's EM&CP process, they have requested we provide updates on all interactions with private and public utility owners. In turn, we kindly request that you reply to this email as soon as possible confirming the statement above is accurate (or rephrase as you deem appropriate). If we don't receive a response from you, we will assume that you agree with the statements above, subject to your receipt and review of the final requested plans.

End of statement.

=====

From: Cole, Benjamin
Sent: Monday, April 24, 2023 7:50 AM
To: 'cjdodson@rotterdamny.org' <cjdodson@rotterdamny.org>; 'mcollins@rotterdamny.org' <mcollins@rotterdamny.org>; 'llamora@rotterdamny.org' <llamora@rotterdamny.org>
Subject: CHPE Collocated Infrastructure Details_EM&CP 4B and 5A_Town of Rotterdam

Good Morning,

At the following links please find the most current plan and profile drawing sets^(1, 2) depicting where the CHPE alignment interacts with your infrastructure.

[CHPE-SUB-0093.03-00-Town of Rotterdam - CI Owner Package - 4B - 03-13-2023.pdf](#)

[CHPE-SUB-0094.03-00-Town of Rotterdam Water & Sewer - CI Owner Package - 5A - 03-08-2023.pdf](#)

Please let me know if you have comments or feedback, or note any conflicts on the drawing sets.

Thank You,

Ben Cole

ben.cole@wsp.com

Notes:

- 1) Where applicable, CHPE team members may be in touch regarding a proposed Road Use Agreement, crossing agreement, or other Project matters.
- 2) Due to the dynamic nature of the current phase of the Project, a chance exists that ongoing discussions between your organization and the CHPE team are not fully reflected in the drawings. In such cases a revision of the plans/profiles that represents the final Project design will be provided when available.

From: Cole, Benjamin

Sent: Tuesday, April 4, 2023 12:14 PM

To: 'cjdodson@rotterdamny.org' <cjdodson@rotterdamny.org>; 'mcollins@rotterdamny.org' <mcollins@rotterdamny.org>; 'llamora@rotterdamny.org' <llamora@rotterdamny.org>

Subject: RE: KWT - Overland: New Transmittal - WSP-ROTT-TRNS-0131 - CHPE Package 5A Co-Located Infrastructure Matrix and Drawings - Town of Rotterdam

Good Afternoon,

At the following link please find the most current drawing set available for CHPE Package 5A: [CHPE-SUB-0094.02-00-Package 5A Town of Rotterdam Co-Located Infrastructure 2022-08-22.pdf](#)

Please let me know if you have feedback or comments on the drawings, with respect to how the CHPE proposed CHPE alignment interacts with Town infrastructure.

Thank You,

Ben Cole

ben.cole@wsp.com

From: Cole, Benjamin

Sent: Friday, October 14, 2022 12:06 PM

To: cjdodson@rotterdamny.org; mcollins@rotterdamny.org; llamora@rotterdamny.org

Subject: RE: KWT - Overland: New Transmittal - WSP-ROTT-TRNS-0131 - CHPE Package 5A Co-Located Infrastructure Matrix and Drawings - Town of Rotterdam

Good Morning,

I'm checking in to see if you have comments on the information below or the Plans/Profiles available at the link (please see also the attached message sent yesterday, regarding CHPE Package 4B). Copying the links to these two sets of plans/profiles here for convenience:

Links:

[CHPE-SUB-0093.01-00-Package 4B Town of Rotterdam Co-Located Infrastructure 2022-09-13.pdf](#)
[Package 5A Town of Rotterdam Co-Located Infrastructure 2022-08-22.pdf](#)

Thank You,

Ben Cole

ben.cole@wsp.com

From: Cole, Benjamin

Sent: Thursday, October 13, 2022 6:32 PM

To: cjdodson@rotterdamny.org; mcollins@rotterdamny.org; llamora@rotterdamny.org

Subject: RE: KWT - Overland: New Transmittal - WSP-ROTT-TRNS-0131 - CHPE Package 5A Co-Located Infrastructure Matrix and Drawings - Town of Rotterdam

Good Evening,

I'm checking in to see if you have comments on the information below and plans/profiles available at the link.

Thank You,

Ben Cole

ben.cole@wsp.com

From: CHPE-KWT@portal3.pbid.com <CHPE-KWT@portal3.pbid.com>

Sent: Thursday, September 8, 2022 2:01 PM

To: cjdodson@rotterdamny.org; mcollins@rotterdamny.org; llamora@rotterdamny.org

Cc: CHPE-KWT@portal3.pbid.com

Subject: KWT - Overland: New Transmittal - WSP-ROTT-TRNS-0131 - CHPE Package 5A Co-Located Infrastructure Matrix and Drawings - Town of Rotterdam

Workflow Notification

A new Transmittal has been entered into the system.

Transmittal #: WSP-ROTT-TRNS-0131

Subject: CHPE Package 5A Co-Located Infrastructure Matrix and Drawings - Town of Rotterdam

ATTN: Mollie Collins, Jack Dodson, Larry LaMora

From: Ben Cole

Issue Purpose: For Your Information

Date Transmitted: 9/2/2022

Comments: Good Afternoon,

I'm writing on behalf of Transmission Developers Inc. ("TDI"), owner of the Champlain Hudson Power Express ("CHPE" or "Project") transmission line project. The purpose of this correspondence is to provide more detailed information related to how the CHPE project is designed to interact with your infrastructure and to solicit feedback from your company regarding the Project's alignment.

The CHPE is a fully permitted 339-mile underground and underwater high voltage direct current (HVDC) electric transmission line that will import up to 1,250 MW of renewable power from Canada and send it to the New York City metro area (see <https://chpexpress.com> for additional information).

At the enclosed link please find design drawings of the proposed CHPE alignment where it involves your infrastructure

within
the CHPE Package referenced in the title of this message.

TDI will be submitting these plans to the New York State Public Service Commission ("PSC") for approval prior to construction.

Please review the linked information regarding the CHPE alignment relating to your infrastructure and provide concurrence with the Project's cable separation and alignment and any feedback to ben.cole@wsp.com by September 16, 2022.

It is important to TDI that the construction and operation of the CHPE project does not interfere with the continued operation of your infrastructure.

To the extent that the CHPE alignment interacts with your infrastructure within future Segment EM&CP submissions, we will provide you with similar drawings in advance of those filings. I look forward to coordinating with you as we finalize the design of the CHPE project.

Thank You,

Ben Cole
WSP USA, on behalf of TDI

ben.cole@wsp.com

File Links (link will be active for 60 days):

File Name
Package 5A Town of Rotterdam Co-Located Infrastructure 2022-08-22.pdf

CHPE SharePoint users can access the record and file(s) using the link below:

<https://chpe.pbid.com/KWT/layouts/15/DocSetHome.aspx?id=/KWT/Transmittals/CHPE%20Package%205A%20Co-Located%20Infrastructure%20Matrix%20and%20Drawings%20-%20Town%20of%20Rotterdam&OpenIn=browser>

Disclaimer: The information contained in this email, including linked content, is considered confidential and may be privileged. It is intended only for the person or entity to which it is addressed and must not be sent or made accessible to other recipients. If you are not the intended recipient, you are hereby notified that any review, retransmission, dissemination or other use of, or taking any action in reliance upon this information is strictly prohibited. If you have received this email in error, kindly notify chpedoccontrol@portal3.pbid.com and delete the original message from your system.

Thank You.

Cole, Benjamin

From: Cole, Benjamin
Sent: Friday, October 28, 2022 10:34 AM
To: Matthew Holtgrieve
Cc: Gary Wakefield; Rick Chase
Subject: RE: KWT - Overland: New Transmittal - WSP-GD-TRNS-0134 - CHPE Package 5B Co-
Located Infrastructure Matrix and Drawings - Gateway Delmar

Hi Matt, thanks for getting back to me.

Your interpretation sounds correct. The thin red line below is the CHPE alignment. It changes side of the RR approximately due west of your facility. Please let me know if you have more questions/comments/need for analysis.

Thank You,

Ben Cole

ben.cole@wsp.com

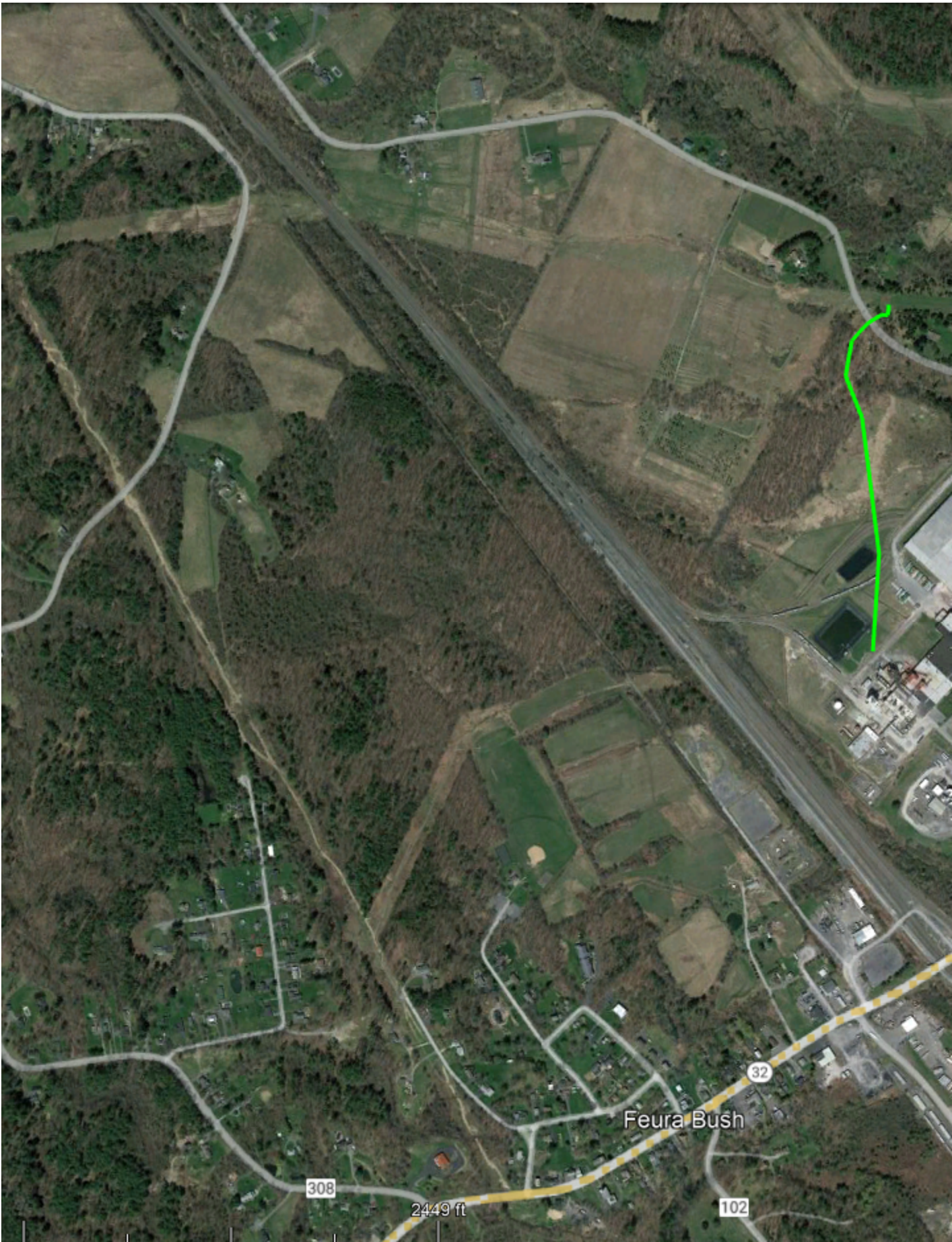


From: Matthew Holtgrieve <mholtgrieve@gatewayenergy.com>
Sent: Thursday, October 27, 2022 11:59 AM
To: Cole, Benjamin <Ben.Cole@wsp.com>
Cc: Gary Wakefield <gwakefield@gatewayenergy.com>

Subject: FW: KWT - Overland: New Transmittal - WSP-GD-TRNS-0134 - CHPE Package 5B Co-Located Infrastructure Matrix and Drawings - Gateway Delmar

Ben,

Based on our review of the plan set you sent, it looks like you guys will be running on the other side of the RR and would not impact our pipeline easement. Our gas line runs along the route shown below. Let me know if our interpretation is correct.



Thanks,
Matt Holtgrieve
Vice President of Operations

e-mail: mholtgrieve@gatewayenergy.com

1415 Louisiana Street, Suite 4100
Houston, TX 77002



<https://gatewayenergy.com/>

From: Gary Wakefield <gwakefield@gatewayenergy.com>
Sent: Thursday, October 13, 2022 5:33 PM
To: Matthew Holtgrieve <mholtgrieve@gatewayenergy.com>
Subject: FW: KWT - Overland: New Transmittal - WSP-GD-TRNS-0134 - CHPE Package 5B Co-Located Infrastructure Matrix and Drawings - Gateway Delmar

Sent from [Mail](#) for Windows

From: [Cole, Benjamin](#)
Sent: Thursday, October 13, 2022 5:29 PM
To: [Gary Wakefield](#)
Subject: RE: KWT - Overland: New Transmittal - WSP-GD-TRNS-0134 - CHPE Package 5B Co-Located Infrastructure Matrix and Drawings - Gateway Delmar

[CAUTION] This email originated from outside the organization. Do not follow guidance, click links, or open attachments unless you recognize the sender and know the content is safe.

Good Evening,

I'm checking in to see if you have comments on the information below and plans/profiles available at the link.

Thank You,

Ben Cole

ben.cole@wsp.com

From: CHPE-KWT@portal3.pbid.com <CHPE-KWT@portal3.pbid.com>
Sent: Thursday, September 8, 2022 2:00 PM
To: gwakefield@gatewayenergy.com

Cc: CHPE-KWT@portal3.pbid.com

Subject: KWT - Overland: New Transmittal - WSP-GD-TRNS-0134 - CHPE Package 5B Co-Located Infrastructure Matrix and Drawings - Gateway Delmar

Workflow Notification

A new Transmittal has been entered into the system.

Transmittal #: WSP-GD-TRNS-0134

Subject: CHPE Package 5B Co-Located Infrastructure Matrix and Drawings - Gateway Delmar

ATTN: Gary Wakefield

From: Ben Cole

Issue Purpose: For Your Information

Date Transmitted: 9/2/2022

Comments: Good Afternoon,

I'm writing on behalf of Transmission Developers Inc. ("TDI"), owner of the Champlain Hudson Power Express ("CHPE" or "Project") transmission line project. The purpose of this correspondence is to provide more detailed information related to how the CHPE project is designed to interact with your infrastructure and to solicit feedback from your company regarding the Project's alignment.

The CHPE is a fully permitted 339-mile underground and underwater high voltage direct current (HVDC) electric transmission line that will import up to 1,250 MW of renewable power from Canada and send it to the New York City metro area (see <https://chpexpress.com> for additional information).

At the enclosed link please find design drawings of the proposed CHPE alignment where it involves your infrastructure within the CHPE Package referenced in the title of this message.

TDI will be submitting these plans to the New York State Public Service Commission ("PSC") for approval prior to construction.

Please review the linked information regarding the CHPE alignment relating to your infrastructure and provide concurrence with the Project's cable separation and alignment and any feedback to ben.cole@wsp.com by September 16, 2022.

It is important to TDI that the construction and operation of the CHPE project does not interfere with the continued operation of your infrastructure.

To the extent that the CHPE alignment interacts with your infrastructure within future Segment EM&CP submissions, we will provide you with similar drawings in advance of those filings. I look forward to coordinating with you as we finalize the design of the CHPE project.

Thank You,

Ben Cole
WSP USA, on behalf of TDI

ben.cole@wsp.com

File Links (link will be active for 60 days):

File Name
Package 5B_Gateway Delmar LLC_Co-Located Infrastructure_2022-08-18.pdf

CHPE SharePoint users can access the record and file(s) using the link below:

[https://chpe.pbid.com/KWT/ layouts/15/DocSetHome.aspx?id=/KWT/Transmittals/CHPE%20Package%205B%20Co-Located%20Infrastructure%20Matrix%20and%20Drawings%20-%20Gateway%20Delmar&OpenIn=browser](https://chpe.pbid.com/KWT/layouts/15/DocSetHome.aspx?id=/KWT/Transmittals/CHPE%20Package%205B%20Co-Located%20Infrastructure%20Matrix%20and%20Drawings%20-%20Gateway%20Delmar&OpenIn=browser)

Disclaimer: The information contained in this email, including linked content, is considered confidential and may be privileged. It is intended only for the person or entity to which it is addressed and must not be sent or made accessible to other recipients. If you are not the intended recipient, you are hereby notified that any review, retransmission, dissemination or other use of, or taking any action in reliance upon this information is strictly prohibited. If you have received this email in error, kindly notify chpedoccontrol@portal3.pbid.com and delete the original message from your system.

Thank You.

NOTICE: This communication and any attachments ("this message") may contain information which is privileged, confidential, proprietary or otherwise subject to restricted disclosure under applicable law. This message is for the sole use of the intended recipient(s). Any unauthorized use, disclosure, viewing, copying, alteration, dissemination or distribution of, or reliance on, this message is strictly prohibited. If you have received this message in error, or you are not an authorized or intended recipient, please notify the sender immediately by replying to this message, delete this message and all copies from your e-mail system and destroy any printed copies.

-LAEmHhHzdJzBfTWfa4Hgs7pbKl

Cole, Benjamin

From: Beartown Engineering <btengineering@comcast.net>
Sent: Wednesday, September 21, 2022 12:54 PM
To: Cole, Benjamin
Cc: lucas.stubbs@lumen.com; David.Vega@lumen.com
Subject: Re: KWT - Overland: New Transmittal - WSP-LMN-TRNS-0135 - CHPE Package 5B Co-located Infrastructure Matrix and Drawings - Level 3

Ben.
FYI. This section of the CHPE through the Selkirk, NY rail yard is clear of Lumen facilities. Lumen has no conduits/cables along the rail ROW in this area.

Thanks.
Michael Reilly
Beartown Engineering
Underhill, VT 05489

btengineering@comcast.net

On 09/08/2022 1:59 PM chpe-kwt@portal3.pbid.com wrote:

Workflow Notification

A new Transmittal has been entered into the system.

Transmittal #: WSP-LMN-TRNS-0135
Subject: CHPE Package 5B Co-located Infrastructure Matrix and Drawings - Level 3
ATTN: David Vega, Lucas Stubbs, Michael Reilly
From: Ben Cole
Issue Purpose: For Your Information
Date Transmitted: 9/2/2022

Comments: Good Afternoon,

I'm writing on behalf of Transmission Developers Inc. ("TDI"), owner of the Champlain Hudson Power Express ("CHPE" or "Project") transmission line project. The purpose of this correspondence is to provide more detailed information related to how the CHPE project is designed to interact with your infrastructure and to solicit feedback from your company regarding the Project's alignment.

The CHPE is a fully permitted 339-mile underground and underwater high voltage direct current (HVDC) electric transmission line that will import up to 1,250 MW of renewable power from Canada and send it to the New York City metro area (see <https://chpexpress.com> for additional information).

At the enclosed link please find design drawings of the proposed CHPE alignment where it involves your

infrastructure within
the CHPE Package referenced in the title of this message.

TDI will be submitting these plans to the New York State Public Service Commission ("PSC") for approval prior to construction.

Please review the linked information regarding the CHPE alignment relating to your infrastructure and provide concurrence with the Project's cable separation and alignment and any feedback to ben.cole@wsp.com by September 16, 2022.
It is important to TDI that the construction and operation of the CHPE project does not interfere with the continued operation of your infrastructure.

To the extent that the CHPE alignment interacts with your infrastructure within future Segment EM&CP submissions, we will provide you with similar drawings in advance of those filings. I look forward to coordinating with you as we finalize the design of the CHPE project.

Thank You,

Ben Cole
WSP USA, on behalf of TDI

ben.cole@wsp.com

File Links (link will be active for 60 days):

File Name
Package 5B_Level 3_Co-Located Infrastructure_2022-08-18.pdf

CHPE SharePoint users can access the record and file(s) using the link below:
https://chpe.pbid.com/KWT/_layouts/15/DocSetHome.aspx?id=/KWT/Transmittals/CHPE%20Package%205B%20Co-Located%20Infrastructure%20Matrix%20and%20Drawings%20-%20Level%203&OpenIn=browser

*Disclaimer: The information contained in this email, including linked content, is considered confidential and may be privileged. It is intended only for the person or entity to which it is addressed and must not be sent or made accessible to other recipients. If you are not the intended recipient, you are hereby notified that any review, retransmission, dissemination or other use of, or taking any action in reliance upon this information is strictly prohibited. If you have received this email in error, kindly notify chpedoccontrol@portal3.pbid.com and delete the original message from your system.
Thank You.*

Cole, Benjamin

From: Cole, Benjamin
Sent: Wednesday, December 7, 2022 12:30 PM
To: Bridget.Grabner@nationalgrid.com
Cc: Timothy.Dzimian@nationalgrid.com; Aspinall, Pamela; Rick Chase; Grassi, Laura
Subject: CHPE National Grid PTR Application for Packages 5A and 5B

Hi Bridget,

The link below directs to a PTR for Champlain Hudson Power Express Packages 5A and 5B. This segment of the transmission line includes the Towns of Rotterdam, Guilderland, New Scotland, and Bethlehem, in Schenectady and Albany counties, NY. This application incorporates the items on the Land Use Application Checklist and includes in-progress plans and profiles for interactions with National Grid overhead and underground electric and underground gas infrastructure. As we've discussed, your review of these in-progress plans will ensure proper interactions with your infrastructure and will give CHPE the opportunity to confirm that the design provides adequate protections, and allows for necessary design changes based on your review prior to plans being submitted to the Public Service Commission for approval.

Link: [Segments 8 and 9 Packages 5A and 5B](#) Please note this link expires in 60 days.

We are currently completing aeriels for four locations that were recently added to this stretch and will upload those as soon as they are finalized (today - tomorrow). Also, the designers are revising the matrices that are found at the beginning of each plan/profile set to make it easier for reviewers to locate the interactions in the drawing sets. We'll upload those as soon as available, but, in the interest of expediency, want to make the plans available to National Grid now.

Thank you for your attention to this matter, and please let me know if anything else is needed.

Ben Cole

ben.cole@wsp.com

Cole, Benjamin

From: Cole, Benjamin
Sent: Wednesday, April 12, 2023 8:51 AM
To: Dzimian, Timothy S.; Schlegel, Jennifer; Aspinall, Pamela; Graber, Bridget
Cc: Weatherwax, Kim; Kogler, Mark; Islam, Mohammad A.; Domino, Mark F.; Hill, William D.; Mathias, Meredith; Rick Chase; Buczek, Jason D.; Conklin, Kevin J.; Ascioti, Demetrio; Fowles, Matthew; Daniel.Keener; Tylor.Bottorff; Justine.Rojas; Hanford, Madeline; Grassi, Laura; Mark.Swallow; Kelli Capka (KC Engineering-NYC); Kern, Michael D.; Michael Main; Fonzi, Joseph J; McNally, Jeffrey; Jasinski, Gregory T.; LaGrave, Barret; Ayokunle Kafi; Stephen Rutkey; Nolan Mazur; Grassi, Laura; Neumaier, Steve; Mehta, Ruju; Shute, Nicole
Subject: RE: CHPE Bi-Weekly Check In

Good Morning All,

Package 5B update became available today and has been uploaded to the same link shown below and copied here:
[Segments 8 and 9 Packages 5A and 5B Plan and Profile](#)

Thanks,

Ben Cole

ben.cole@wsp.com

From: Cole, Benjamin
Sent: Wednesday, March 29, 2023 9:47 AM
To: Dzimian, Timothy S. <Timothy.Dzimian@nationalgrid.com>; Schlegel, Jennifer <Jennifer.Schlegel@nationalgrid.com>; Aspinall, Pamela <Pamela.Aspinall@nationalgrid.com>; Graber, Bridget <Bridget.Graber@nationalgrid.com>
Cc: Weatherwax, Kim <Kim.Weatherwax@nationalgrid.com>; Kogler, Mark <Mark.Kogler@nationalgrid.com>; Islam, Mohammad A. <Mohammad.Islam@nationalgrid.com>; Domino, Mark F. <Mark.Domino@nationalgrid.com>; Hill, William D. <william.hill@nationalgrid.com>; Mathias, Meredith <Meredithe.Mathias@nationalgrid.com>; Rick Chase <Rick.Chase@transmissiondevelopers.com>; Buczek, Jason D. <Jason.Buczek@nationalgrid.com>; Conklin, Kevin J. <Kevin.Conklin@nationalgrid.com>; Ascioti, Demetrio <Demetrio.Ascioti@nationalgrid.com>; Fowles, Matthew <Matthew.Fowles@nationalgrid.com>; Daniel.Keener <Daniel.Keener@kiewit.com>; Tylor.Bottorff <Tylor.Bottorff@kiewit.com>; Justine.Rojas <Justine.Rojas@Kiewit.com>; Hanford, Madeline <Maddy.Hanford@wsp.com>; Grassi, Laura <Laura.Grassi@wsp.com>; Mark.Swallow <Mark.Swallow@kiewit.com>; Kelli Capka (KC Engineering-NYC) <kcarka@kcepc.com>; Kern, Michael D. <Michael.Kern@nationalgrid.com>; Michael Main <Michael.Main@transmissiondevelopers.com>; Fonzi, Joseph J <J.Fonzi@wsp.com>; McNally, Jeffrey <Jeffrey.McNally@wsp.com>; Jasinski, Gregory T. <G.Jasinski@wsp.com>; LaGrave, Barret <Barret.LaGrave@wsp.com>; Ayokunle Kafi <ayokunle.kafi@transmissiondevelopers.com>; Stephen Rutkey <stephen.rutkey@transmissiondevelopers.com>; Nolan Mazur <nolan.mazur@transmissiondevelopers.com>; Grassi, Laura <Laura.Grassi@wsp.com>; Neumaier, Steve <Steve.Neumaier@wsp.com>; Mehta, Ruju <ruju.mehta@wsp.com>; Shute, Nicole <Nicole.Shute@wsp.com>
Subject: RE: CHPE Bi-Weekly Check In

Good Morning,

The updated Package 5A Plan and Profile (dated 03-07-23; came in late last week) is available at the following link:
[Segments 8 and 9 Packages 5A and 5B Plan and Profile](#)

Thanks,

Ben Cole

ben.cole@wsp.com

From: Cole, Benjamin

Sent: Tuesday, March 28, 2023 2:37 PM

To: Dzimian, Timothy S. <Timothy.Dzimian@nationalgrid.com>; Schlegel, Jennifer <Jennifer.Schlegel@nationalgrid.com>; Aspinall, Pamela <Pamela.Aspinall@nationalgrid.com>; Graber, Bridget <Bridget.Graber@nationalgrid.com>

Cc: Weatherwax, Kim <Kim.Weatherwax@nationalgrid.com>; Kogler, Mark <Mark.Kogler@nationalgrid.com>; Islam, Mohammad A. <Mohammad.Islam@nationalgrid.com>; Domino, Mark F. <Mark.Domino@nationalgrid.com>; Hill, William D. <william.hill@nationalgrid.com>; Mathias, Meredith <Meredithe.Mathias@nationalgrid.com>; Rick Chase <Rick.Chase@transmissiondevelopers.com>; Buczek, Jason D. <Jason.Buczek@nationalgrid.com>; Conklin, Kevin J. <Kevin.Conklin@nationalgrid.com>; Ascoti, Demetrio <Demetrio.Ascoti@nationalgrid.com>; Fowles, Matthew <Matthew.Fowles@nationalgrid.com>; Daniel.Keener <Daniel.Keener@kiewit.com>; Tylor.Bottorff <Tylor.Bottorff@kiewit.com>; Justine.Rojas <Justine.Rojas@Kiewit.com>; Hanford, Madeline <Maddy.Hanford@wsp.com>; Grassi, Laura <Laura.Grassi@wsp.com>; Mark.Swallow <Mark.Swallow@kiewit.com>; Kelli Capka (KC Engineering-NYC) <kcapka@kcepc.com>; Kern, Michael D. <Michael.Kern@nationalgrid.com>; Michael Main <Michael.Main@transmissiondevelopers.com>; Fonzi, Joseph J <J.Fonzi@wsp.com>; McNally, Jeffrey <Jeffrey.McNally@wsp.com>; Jasinski, Gregory T. <G.Jasinski@wsp.com>; LaGrave, Barret <Barret.LaGrave@wsp.com>; Ayokunle Kafi <ayokunle.kafi@transmissiondevelopers.com>; Stephen Rutkey <stephen.rutkey@transmissiondevelopers.com>; Nolan Mazur <nolan.mazur@transmissiondevelopers.com>; Grassi, Laura <Laura.Grassi@wsp.com>; Neumaier, Steve <Steve.Neumaier@wsp.com>; Mehta, Ruju <ruju.mehta@wsp.com>; Shute, Nicole <Nicole.Shute@wsp.com>

Subject: RE: CHPE Bi-Weekly Check In

Hi Tim, All,

At the following link, as well as attached to this message, is a figure depicting the planned crossing of the CHPE alignment at this location, where National Grid infrastructure is present.

[4A SR146A Crossing_032823](#)

Looking forward to speaking with the team about this tomorrow.

Thanks,

Ben Cole

ben.cole@wsp.com

From: Cole, Benjamin

Sent: Tuesday, March 28, 2023 9:43 AM

To: Dzimian, Timothy S. <Timothy.Dzimian@nationalgrid.com>; Schlegel, Jennifer <Jennifer.Schlegel@nationalgrid.com>; Aspinall, Pamela <Pamela.Aspinall@nationalgrid.com>; Graber, Bridget

<Bridget.Graber@nationalgrid.com>

Cc: Weatherwax, Kim <Kim.Weatherwax@nationalgrid.com>; Kogler, Mark <Mark.Kogler@nationalgrid.com>; Islam, Mohammad A. <Mohammad.Islam@nationalgrid.com>; Domino, Mark F. <Mark.Domino@nationalgrid.com>; Hill, William D. <william.hill@nationalgrid.com>; Mathias, Meredith <Meredithe.Mathias@nationalgrid.com>; Rick Chase <Rick.Chase@transmissiondevelopers.com>; Buczek, Jason D. <Jason.Buczek@nationalgrid.com>; Conklin, Kevin J. <Kevin.Conklin@nationalgrid.com>; Ascoti, Demetrio <Demetrio.Ascoti@nationalgrid.com>; Fowles, Matthew <Matthew.Fowles@nationalgrid.com>; Daniel.Keener <Daniel.Keener@kiewit.com>; Tylor.Bottorff <Tylor.Bottorff@kiewit.com>; Justine.Rojas <Justine.Rojas@Kiewit.com>; Hanford, Madeline <Maddy.Hanford@wsp.com>; Grassi, Laura <Laura.Grassi@wsp.com>; Mark.Swallow <Mark.Swallow@kiewit.com>; Kelli Capka (KC Engineering-NYC) <kcapka@kcepc.com>; Kern, Michael D. <Michael.Kern@nationalgrid.com>; Michael Main <Michael.Main@transmissiondevelopers.com>; Fonzi, Joseph J <J.Fonzi@wsp.com>; McNally, Jeffrey <Jeffrey.McNally@wsp.com>; Jasinski, Gregory T. <G.Jasinski@wsp.com>; LaGrave, Barret <Barret.LaGrave@wsp.com>; Ayokunle Kafi <ayokunle.kafi@transmissiondevelopers.com>; Stephen Rutkey <stephen.rutkey@transmissiondevelopers.com>; Nolan Mazur <nolan.mazur@transmissiondevelopers.com>; Grassi, Laura <Laura.Grassi@wsp.com>; Neumaier, Steve <Steve.Neumaier@wsp.com>; Mehta, Ruju <ruju.mehta@wsp.com>; Shute, Nicole <Nicole.Shute@wsp.com>

Subject: RE: CHPE Bi-Weekly Check In

Good Morning Tim, All,

Please find a draft agenda for tomorrow's call below:

1. Project Schedule Overview (Kiewit/TDI)

- CHPE Design Schedule
- CHPE Construction Schedule

2. Review of NG Action Items (NG)

3. Review CHPE's Drawing Sets (Kiewit)

:S

4. Takeaways, Next Steps, Action Items (NG)

Thanks,

Ben Cole

From: Dzimian, Timothy S. <Timothy.Dzimian@nationalgrid.com>
Sent: Friday, March 17, 2023 5:20 AM
To: Schlegel, Jennifer <Jennifer.Schlegel@nationalgrid.com>; Rick Chase <Rick.Chase@transmissiondevelopers.com>; Cole, Benjamin <Ben.Cole@wsp.com>; Aspinall, Pamela <Pamela.Aspinall@nationalgrid.com>; Graber, Bridget <Bridget.Graber@nationalgrid.com>
Cc: Weatherwax, Kim <Kim.Weatherwax@nationalgrid.com>; Kogler, Mark <Mark.Kogler@nationalgrid.com>; Islam, Mohammad A. <Mohammad.Islam@nationalgrid.com>; Domino, Mark F. <Mark.Domino@nationalgrid.com>; Hill, William D. <william.hill@nationalgrid.com>; Mathias, Meredith <Meredithe.Mathias@nationalgrid.com>; Buczek, Jason D. <Jason.Buczek@nationalgrid.com>; Conklin, Kevin J. <Kevin.Conklin@nationalgrid.com>; Ascioti, Demetrio <Demetrio.Ascioti@nationalgrid.com>; Fowles, Matthew <Matthew.Fowles@nationalgrid.com>; Daniel.Keener <Daniel.Keener@kiewit.com>; Tylor.Bottorff <Tylor.Bottorff@kiewit.com>; Justine.Rojas <Justine.Rojas@Kiewit.com>; Hanford, Madeline <Maddy.Hanford@wsp.com>; Grassi, Laura <Laura.Grassi@wsp.com>; Mark.Swallow <Mark.Swallow@kiewit.com>; Kelli Capka (KC Engineering-NYC) <kcapka@kcepc.com>; Kern, Michael D. <Michael.Kern@nationalgrid.com>; Michael Main <Michael.Main@transmissiondevelopers.com>; Fonzi, Joseph J <J.Fonzi@wsp.com>; McNally, Jeffrey <Jeffrey.McNally@wsp.com>; Jasinski, Gregory T. <G.Jasinski@wsp.com>; LaGrave, Barret <Barret.LaGrave@wsp.com>
Subject: RE: CHPE Bi-Weekly Check In

Apologies for the delay. Had to break up the attachments. Will send the recording via second email.

All, attached are the recording, transcript and notes from our call yesterday. Also, please be sure to see the emails sent after our call from Ben Cole and Karla Corpus. Additionally, please be sure to reach out to the group with any other items which we did not have time to discuss. A few highlights

- CHPE to provide agenda items for next call

Please reach out to the group with any new questions/comments/concerns which come up before our next call

Timothy S. Dzimian
Commercial Services
nationalgrid

timothy.dzimian@nationalgrid.com

Planned Vacation/Out of Office: 4/25/23 through 5/7/23

Quote of the Week: Do what you can, with what you have, where you are." Theodore Roosevelt.

-----Original Appointment-----

From: Dzimian, Timothy S.
Sent: Wednesday, February 15, 2023 7:09 AM
To: Schlegel, Jennifer; Dzimian, Timothy S.; Rick Chase; Ben.Cole@wsp.com; Aspinall, Pamela; Graber, Bridget
Cc: Weatherwax, Kim; Kogler, Mark; Islam, Mohammad A.; Domino, Mark F.; Hill, William D.; Mathias, Meredith; Buczek, Jason D.; Conklin, Kevin J.; Ascioti, Demetrio; Fowles, Matthew; Daniel.Keener; Tylor.Bottorff; Justine.Rojas; Hanford, Madeline; Grassi, Laura; Mark.Swallow; Kelli Capka (KC Engineering-NYC); Kern, Michael D.; Michael Main; Fonzi, Joseph J; McNally, Jeffrey; Jasinski, Gregory T.; LaGrave, Barret
Subject: CHPE Bi-Weekly Check In

Where: Microsoft Teams Meeting

- 1.
2. Package submittals
 - a. Package 1A & 1B
 - b. Package 1C & 2
 - c. Package 3
 - d. Package 4A
 - e. Package 4B
 - f. Package 5A & 5B
 - g. Package 6
3. Matrix

<<https://teams.microsoft.com/meetingOptions/?organizerId=b974c265-7a3f-4fec-9c76->

[c7803a38f58d&tenantId=f98a6a53-25f3-4212-901c-c7787fcd3495&threadId=19_meeting_MDgyYmMxNDEtMDNhOC00OWEzLWFjZGUtZWE0ZDM1OTA3MDE5@thread.v2&messageId=0&language=en-US>](https://teams.microsoft.com/l/meetup-join/19%3ameeting_MDgyYmMxNDEtMDNhOC00OWEzLWFjZGUtZWE0ZDM1OTA3MDE5%40thread.v2%22Tid%22%3a%22f98a6a53-25f3-4212-901c-c7787fcd3495%22%2c%22Oid%22%3a%22b974c265-7a3f-4fec-9c76-c7803a38f58d%22%7d)

Join Teams Meeting
en-US

https://teams.microsoft.com/l/meetup-join/19%3ameeting_MDgyYmMxNDEtMDNhOC00OWEzLWFjZGUtZWE0ZDM1OTA3MDE5%40thread.v2/0?context=%7b%22Tid%22%3a%22f98a6a53-25f3-4212-901c-c7787fcd3495%22%2c%22Oid%22%3a%22b974c265-7a3f-4fec-9c76-c7803a38f58d%22%7d

Meeting ID: 298 908 635 879

Passcode: WofVhe

Join with a video conferencing device

nationalgrid@m.webex.com

116 938 233 1

<https://www.webex.com/msteams?confid=1169382331&tenantkey=nationalgrid&domain=m.webex.com>

If you need a local number, get one here. And if you've forgotten the dial-in PIN, you can reset it.

Toll number: +1 646-680-9909

Conference ID:

464 270 508#

Local Number : <https://dialin.teams.microsoft.com/db913b0e-7ae9-4a9e-a3e5-30795937983e?id=464270508> Reset Pin

: <https://dialin.teams.microsoft.com/usp/pstnconferencing>

Learn More <https://aka.ms/JoinTeamsMeeting> | Meeting options:

[https://teams.microsoft.com/meetingOptions/?organizerId=b974c265-7a3f-4fec-9c76-](https://teams.microsoft.com/meetingOptions/?organizerId=b974c265-7a3f-4fec-9c76-c7803a38f58d&tenantId=f98a6a53-25f3-4212-901c-c7787fcd3495&threadId=19_meeting_MDgyYmMxNDEtMDNhOC00OWEzLWFjZGUtZWE0ZDM1OTA3MDE5@thread.v2&messageId=0&language=en-US)

[c7803a38f58d&tenantId=f98a6a53-25f3-4212-901c-](https://teams.microsoft.com/meetingOptions/?organizerId=b974c265-7a3f-4fec-9c76-c7803a38f58d&tenantId=f98a6a53-25f3-4212-901c-c7787fcd3495&threadId=19_meeting_MDgyYmMxNDEtMDNhOC00OWEzLWFjZGUtZWE0ZDM1OTA3MDE5@thread.v2&messageId=0&language=en-US)

[c7787fcd3495&threadId=19_meeting_MDgyYmMxNDEtMDNhOC00OWEzLWFjZGUtZWE0ZDM1OTA3MDE5@thread.v2](https://teams.microsoft.com/meetingOptions/?organizerId=b974c265-7a3f-4fec-9c76-c7803a38f58d&tenantId=f98a6a53-25f3-4212-901c-c7787fcd3495&threadId=19_meeting_MDgyYmMxNDEtMDNhOC00OWEzLWFjZGUtZWE0ZDM1OTA3MDE5@thread.v2&messageId=0&language=en-US)

[&messageId=0&language=en-US](https://teams.microsoft.com/meetingOptions/?organizerId=b974c265-7a3f-4fec-9c76-c7803a38f58d&tenantId=f98a6a53-25f3-4212-901c-c7787fcd3495&threadId=19_meeting_MDgyYmMxNDEtMDNhOC00OWEzLWFjZGUtZWE0ZDM1OTA3MDE5@thread.v2&messageId=0&language=en-US) |

This e-mail, and any attachments are strictly confidential and intended for the addressee(s) only. The content may also contain legal, professional or other privileged information. If you are not the intended recipient, please notify the sender immediately and then delete the e-mail and any attachments. You should not disclose, copy or take any action in reliance on this transmission.

You may report the matter by contacting us via our [UK Contacts Page](#) or our [US Contacts Page](#) (accessed by clicking on the appropriate link)

Please ensure you have adequate virus protection before you open or detach any documents from this transmission. National Grid plc and its affiliates do not accept any liability for viruses. An e-mail reply to this address may be subject to monitoring for operational reasons or lawful business practices.

For the registered information on the UK operating companies within the National Grid group please use the attached link: <https://www.nationalgrid.com/group/about-us/corporate-registrations>

Cole, Benjamin

From: Zuccolotto, James M. <James.Zuccolotto@nationalgrid.com>
Sent: Thursday, May 4, 2023 2:28 PM
To: Ayokunle Kafi
Cc: Madhusudhan, Srividya; Schlegel, Jennifer
Subject: Segments 8/9 (Design packages 5A& 5B)

Good afternoon Kunle,

Happy to have you share the response below with the PSC regarding team interaction for segments 8/9.

With respect to Segments 8/9 (Design packages 5A& 5B) CHPE has been in ongoing consultation with National Grid regarding the design of CHPE's facilities within the proximity of our utilities along its proposed alignment. To date, our team is continuing to work with the CHPE design, construction, and real estate occupancy teams to ensure that all elements of the proposed collocation interaction are in conformance with National Grid's requirements. While these consultations are progressing and expect we will be able to reach agreement, the CHPE designs within the proximity of National Grid utilities remain subject to our final comments, conditions, and approval, which will be memorialized in the EM&CP documents and appropriate agreements prior to the commencement of any construction activities on National Grid property and/or proximate to National Grid assets.

Best Regards,
Jim

James Zuccolotto
Director
Aviation, Right of Way & Survey Engineering
Nationalgrid Property Services

This e-mail, and any attachments are strictly confidential and intended for the addressee(s) only. The content may also contain legal, professional or other privileged information. If you are not the intended recipient, please notify the sender immediately and then delete the e-mail and any attachments. You should not disclose, copy or take any action in reliance on this transmission.

You may report the matter by contacting us via our [UK Contacts Page](#) or our [US Contacts Page](#) (accessed by clicking on the appropriate link)

Please ensure you have adequate virus protection before you open or detach any documents from this transmission. National Grid plc and its affiliates do not accept any liability for viruses. An e-mail reply to this address may be subject to monitoring for operational reasons or lawful business practices.

For the registered information on the UK operating companies within the National Grid group please use the attached link: <https://www.nationalgrid.com/group/about-us/corporate-registrations>

Cole, Benjamin

From: Cole, Benjamin
Sent: Friday, October 28, 2022 10:34 AM
To: Matthew Holtgrieve
Cc: Gary Wakefield; Rick Chase
Subject: RE: KWT - Overland: New Transmittal - WSP-GD-TRNS-0134 - CHPE Package 5B Co-
Located Infrastructure Matrix and Drawings - Gateway Delmar

Hi Matt, thanks for getting back to me.

Your interpretation sounds correct. The thin red line below is the CHPE alignment. It changes side of the RR approximately due west of your facility. Please let me know if you have more questions/comments/need for analysis.

Thank You,

Ben Cole

ben.cole@wsp.com

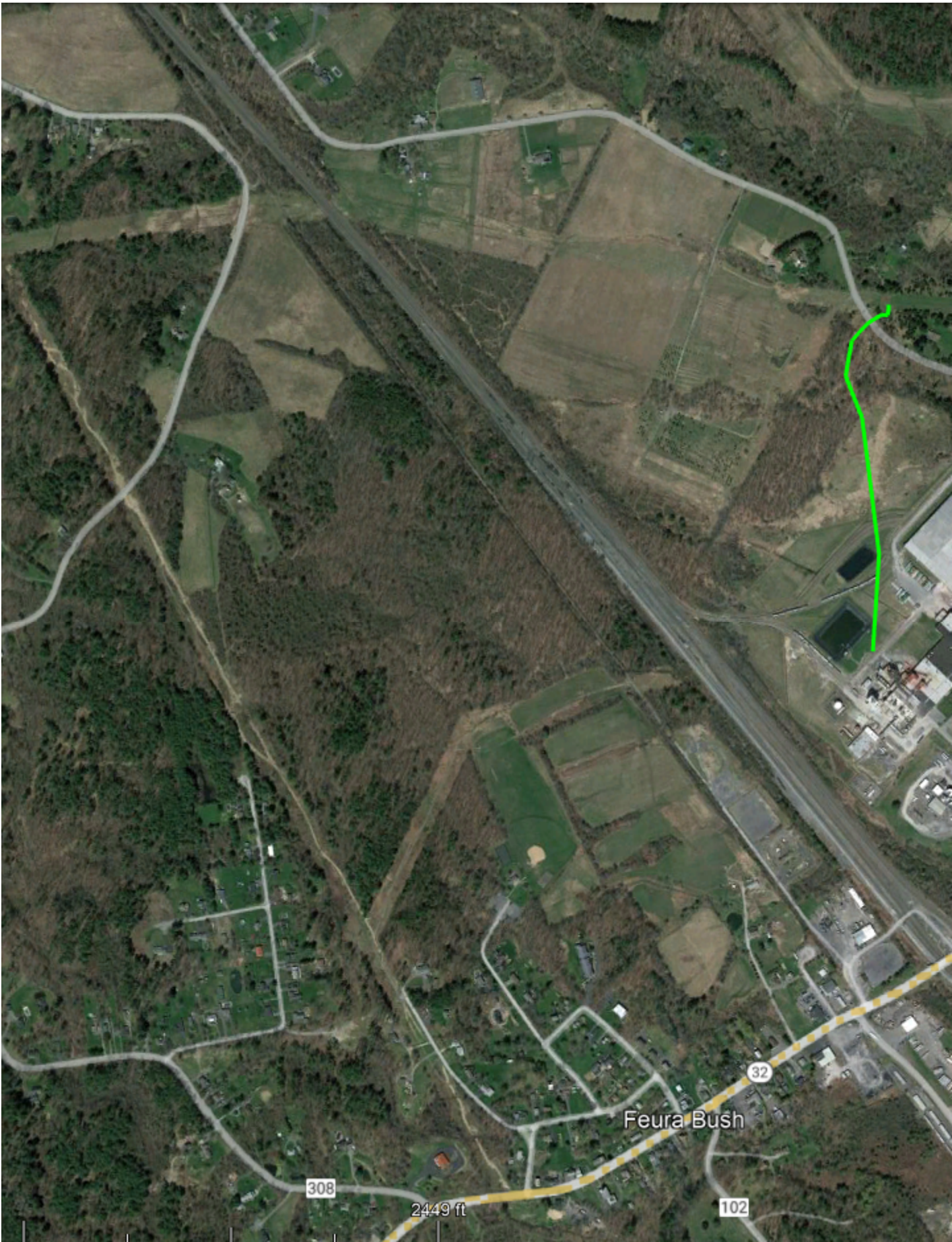


From: Matthew Holtgrieve <mholtgrieve@gatewayenergy.com>
Sent: Thursday, October 27, 2022 11:59 AM
To: Cole, Benjamin <Ben.Cole@wsp.com>
Cc: Gary Wakefield <gwakefield@gatewayenergy.com>

Subject: FW: KWT - Overland: New Transmittal - WSP-GD-TRNS-0134 - CHPE Package 5B Co-Located Infrastructure Matrix and Drawings - Gateway Delmar

Ben,

Based on our review of the plan set you sent, it looks like you guys will be running on the other side of the RR and would not impact our pipeline easement. Our gas line runs along the route shown below. Let me know if our interpretation is correct.



Thanks,
Matt Holtgrieve
Vice President of Operations

e-mail: mholtgrieve@gatewayenergy.com

1415 Louisiana Street, Suite 4100
Houston, TX 77002



<https://gatewayenergy.com/>

From: Gary Wakefield <gwakefield@gatewayenergy.com>
Sent: Thursday, October 13, 2022 5:33 PM
To: Matthew Holtgrieve <mholtgrieve@gatewayenergy.com>
Subject: FW: KWT - Overland: New Transmittal - WSP-GD-TRNS-0134 - CHPE Package 5B Co-Located Infrastructure Matrix and Drawings - Gateway Delmar

Sent from [Mail](#) for Windows

From: [Cole, Benjamin](#)
Sent: Thursday, October 13, 2022 5:29 PM
To: [Gary Wakefield](#)
Subject: RE: KWT - Overland: New Transmittal - WSP-GD-TRNS-0134 - CHPE Package 5B Co-Located Infrastructure Matrix and Drawings - Gateway Delmar

[CAUTION] This email originated from outside the organization. Do not follow guidance, click links, or open attachments unless you recognize the sender and know the content is safe.

Good Evening,

I'm checking in to see if you have comments on the information below and plans/profiles available at the link.

Thank You,

Ben Cole

ben.cole@wsp.com

From: CHPE-KWT@portal3.pbid.com <CHPE-KWT@portal3.pbid.com>
Sent: Thursday, September 8, 2022 2:00 PM
To: gwakefield@gatewayenergy.com

Cc: CHPE-KWT@portal3.pbid.com

Subject: KWT - Overland: New Transmittal - WSP-GD-TRNS-0134 - CHPE Package 5B Co-Located Infrastructure Matrix and Drawings - Gateway Delmar

Workflow Notification

A new Transmittal has been entered into the system.

Transmittal #: WSP-GD-TRNS-0134

Subject: CHPE Package 5B Co-Located Infrastructure Matrix and Drawings - Gateway Delmar

ATTN: Gary Wakefield

From: Ben Cole

Issue Purpose: For Your Information

Date Transmitted: 9/2/2022

Comments: Good Afternoon,

I'm writing on behalf of Transmission Developers Inc. ("TDI"), owner of the Champlain Hudson Power Express ("CHPE" or "Project") transmission line project. The purpose of this correspondence is to provide more detailed information related to how the CHPE project is designed to interact with your infrastructure and to solicit feedback from your company regarding the Project's alignment.

The CHPE is a fully permitted 339-mile underground and underwater high voltage direct current (HVDC) electric transmission line that will import up to 1,250 MW of renewable power from Canada and send it to the New York City metro area (see <https://chpexpress.com> for additional information).

At the enclosed link please find design drawings of the proposed CHPE alignment where it involves your infrastructure within the CHPE Package referenced in the title of this message.

TDI will be submitting these plans to the New York State Public Service Commission ("PSC") for approval prior to construction.

Please review the linked information regarding the CHPE alignment relating to your infrastructure and provide concurrence with the Project's cable separation and alignment and any feedback to ben.cole@wsp.com by September 16, 2022.

It is important to TDI that the construction and operation of the CHPE project does not interfere with the continued operation of your infrastructure.

To the extent that the CHPE alignment interacts with your infrastructure within future Segment EM&CP submissions, we will provide you with similar drawings in advance of those filings. I look forward to coordinating with you as we finalize the design of the CHPE project.

Thank You,

Ben Cole
WSP USA, on behalf of TDI

ben.cole@wsp.com

File Links (link will be active for 60 days):

File Name
Package 5B_Gateway Delmar LLC_Co-Located Infrastructure_2022-08-18.pdf

CHPE SharePoint users can access the record and file(s) using the link below:

[https://chpe.pbid.com/KWT/ layouts/15/DocSetHome.aspx?id=/KWT/Transmittals/CHPE%20Package%205B%20Co-Located%20Infrastructure%20Matrix%20and%20Drawings%20-%20Gateway%20Delmar&OpenIn=browser](https://chpe.pbid.com/KWT/layouts/15/DocSetHome.aspx?id=/KWT/Transmittals/CHPE%20Package%205B%20Co-Located%20Infrastructure%20Matrix%20and%20Drawings%20-%20Gateway%20Delmar&OpenIn=browser)

Disclaimer: The information contained in this email, including linked content, is considered confidential and may be privileged. It is intended only for the person or entity to which it is addressed and must not be sent or made accessible to other recipients. If you are not the intended recipient, you are hereby notified that any review, retransmission, dissemination or other use of, or taking any action in reliance upon this information is strictly prohibited. If you have received this email in error, kindly notify chpedoccontrol@portal3.pbid.com and delete the original message from your system.

Thank You.

NOTICE: This communication and any attachments ("this message") may contain information which is privileged, confidential, proprietary or otherwise subject to restricted disclosure under applicable law. This message is for the sole use of the intended recipient(s). Any unauthorized use, disclosure, viewing, copying, alteration, dissemination or distribution of, or reliance on, this message is strictly prohibited. If you have received this message in error, or you are not an authorized or intended recipient, please notify the sender immediately by replying to this message, delete this message and all copies from your e-mail system and destroy any printed copies.

-LAEmHhHzdJzBfTWfa4Hgs7pbKl

Cole, Benjamin

From: Mann, Kenneth A <Kenneth.Mann@charter.com>
Sent: Friday, April 28, 2023 2:18 PM
To: Cole, Benjamin
Cc: Stephen Rutkey; Grassi, Laura; Albers, David
Subject: RE: [EXTERNAL] KWT - Overland: New Transmittal - WSP-TWC-TRNS-0129 - CHPE Package 5A, 5B Co-Located Infrastructure Matrix and Drawings - Time Warner

Ben,

This statement stands true, my comments regarding the drawings you submitted are based on our current facility locations. We understand that your project will not impact our facilities and any interaction with your project and our exiting plant will be properly documented and located per NYS regulations.

Thanks,

Ken



Kenneth Mann | Construction Coordinator II |
1021 Highbridge Rd | Schenectady, New York 12303 | Kenneth.Mann@Charter.com

From: Cole, Benjamin <Ben.Cole@wsp.com>
Sent: Thursday, April 27, 2023 4:40 PM
To: Mann, Kenneth A <Kenneth.Mann@charter.com>
Cc: Stephen Rutkey <stephen.rutkey@transmissiondevelopers.com>; Grassi, Laura <Laura.Grassi@wsp.com>; Albers, David <Dave.Albers@wsp.com>
Subject: RE: [EXTERNAL] KWT - Overland: New Transmittal - WSP-TWC-TRNS-0129 - CHPE Package 5A, 5B Co-Located Infrastructure Matrix and Drawings - Time Warner

CAUTION: The e-mail below is from an external source. Please exercise caution before opening attachments, clicking links, or following guidance.

Hi Ken,

I expect updated CHPE Package 5A and 5B drawings sets to be available soon.

Please see the following statement and request from the CHPE project below. Thank you.

=====

As you know, CHPE has been in ongoing dialogue with you regarding the design of CHPE's facilities in the proximity of your utility. You understand from CHPE that the design reflects your feedback. The designs in the proximity of your utility remain subject to your final comments and approval, which will be memorialized prior to the commencement of any construction activities in the vicinity of your utility.

CHPE kindly requests that you reply to this email as soon as possible confirming the statement above is accurate, or rephrase as you deem appropriate.

Thank you,
Ben Cole
Co-Located Infrastructure Lead

From: Mann, Kenneth A <Kenneth.Mann@charter.com>
Sent: Monday, September 12, 2022 10:46 AM
To: Cole, Benjamin <Ben.Cole@wsp.com>
Subject: FW: [EXTERNAL] KWT - Overland: New Transmittal - WSP-TWC-TRNS-0129 - CHPE Package 5A, 5B Co-Located Infrastructure Matrix and Drawings - Time Warner

Ben,

Please refer to the comments I placed in red on the attached document. If you have any questions, please let me know.

Thanks,

Ken Mann



Kenneth Mann | Construction Coordinator II |
1021 Highbridge Rd | Schenectady, New York 12303 | Kenneth.Mann@Charter.com

From: CHPE-KWT@portal3.pbid.com <CHPE-KWT@portal3.pbid.com>
Sent: Thursday, September 8, 2022 2:01 PM
To: Burgio, Chad M <Chad.Burgio@charter.com>; Mann, Kenneth A <Kenneth.Mann@charter.com>; Frasier, Aaron W <Aaron.Frasier@charter.com>
Cc: CHPE-KWT@portal3.pbid.com
Subject: [EXTERNAL] KWT - Overland: New Transmittal - WSP-TWC-TRNS-0129 - CHPE Package 5A, 5B Co-Located Infrastructure Matrix and Drawings - Time Warner

CAUTION: The e-mail below is from an external source. Please exercise caution before opening attachments, clicking links, or following guidance.

Workflow Notification

A new Transmittal has been entered into the system.

Transmittal #: WSP-TWC-TRNS-0129
Subject: CHPE Package 5A, 5B Co-Located Infrastructure Matrix and Drawings - Time Warner
ATTN: Chad Burgio, Kenneth Mann, Aaron Frasier
From: Ben Cole
Issue Purpose: For Your Information

Date Transmitted: 9/2/2022

Comments: Good Afternoon,

I'm writing on behalf of Transmission Developers Inc. ("TDI"), owner of the Champlain Hudson Power Express ("CHPE" or "Project") transmission line project. The purpose of this correspondence is to provide more detailed information related to how the CHPE project is designed to interact with your infrastructure and to solicit feedback from your company regarding the Project's alignment.

The CHPE is a fully permitted 339-mile underground and underwater high voltage direct current (HVDC) electric transmission line that will import up to 1,250 MW of renewable power from Canada and send it to the New York City metro area (see <https://chpexpress.com> for additional information).

At the enclosed link please find design drawings of the proposed CHPE alignment where it involves your infrastructure within the CHPE Package referenced in the title of this message.

TDI will be submitting these plans to the New York State Public Service Commission ("PSC") for approval prior to construction.

Please review the linked information regarding the CHPE alignment relating to your infrastructure and provide concurrence with the Project's cable separation and alignment and any feedback to ben.cole@wsp.com by September 16, 2022. It is important to TDI that the construction and operation of the CHPE project does not interfere with the continued operation of your infrastructure.

To the extent that the CHPE alignment interacts with your infrastructure within future Segment EM&CP submissions, we will provide you with similar drawings in advance of those filings. I look forward to coordinating with you as we finalize the design of the CHPE project.

Thank You,

Ben Cole
WSP USA, on behalf of TDI

ben.cole@wsp.com

File Links (link will be active for 60 days):

File Name
Package 5B_Time Warner_Co-Located Infrastructure_2022-08-18.pdf
Package 5A_Time Warner_Co-Located Infrastructure_2022-08-22.pdf

CHPE SharePoint users can access the record and file(s) using the link below:

https://chpe.pbid.com/KWT/_layouts/15/DocSetHome.aspx?id=/KWT/Transmittals/CHPE%20Package%205A,%205B%20Co-Located%20Infrastructure%20Matrix%20and%20Drawings%20-%20Time%20Warner&OpenIn=browser

Disclaimer: The information contained in this email, including linked content, is considered confidential and may be privileged. It is intended only for the person or entity to which it is addressed and must not be sent or made accessible to other recipients. If you are not the intended recipient, you are hereby notified that any review, retransmission, dissemination or other use of, or taking any action in reliance upon this information is strictly prohibited. If you have received this email in error, kindly notify chpedoccontrol@portal3.pbid.com and delete the original message from your system.
Thank You.

The contents of this e-mail message and any attachments are intended solely for the addressee(s) and may contain confidential and/or legally privileged information. If you are not the intended recipient of this message or if this message has been addressed to you in error, please immediately alert the sender by reply e-mail and then delete this message and any attachments. If you are not the intended recipient, you are notified that any use, dissemination, distribution, copying, or storage of this message or any attachment is strictly prohibited.

NOTICE: This communication and any attachments ("this message") may contain information which is privileged, confidential, proprietary or otherwise subject to restricted disclosure under applicable law. This message is for the sole use of the intended recipient(s). Any unauthorized use, disclosure, viewing, copying, alteration, dissemination or distribution of, or reliance on, this message is strictly prohibited. If you have received this message in error, or you are not an authorized or intended recipient, please notify the sender immediately by replying to this message, delete this message and all copies from your e-mail system and destroy any printed copies.

-LAEmHhHzdJzBtTWfa4Hgs7pbKl

The contents of this e-mail message and any attachments are intended solely for the addressee(s) and may contain confidential and/or legally privileged information. If you are not the intended recipient of this message or if this message has been addressed to you in error, please immediately alert the sender by reply e-mail and then delete this message and any attachments. If you are not the intended recipient, you are notified that any use, dissemination, distribution, copying,

or storage of this message or any attachment
is strictly prohibited.

Cole, Benjamin

From: Brickley, Charles Louis <charles.brickley@verizon.com>
Sent: Friday, April 28, 2023 3:50 PM
To: Cole, Benjamin
Cc: Michael Myers; Larue III, Anthony J; Charles Louis Brickley; Jason R Adkison; Alexander J Masti; Hill, Nathaniel RT (Nate); Yakaitis, Raymond A.; Grassi, Laura
Subject: Re: [E] CHPE Collocated Infrastructure Details_5A and 5B_Verizon

I am able to open the 5B file in the email from yesterday. Everything in it looks acceptable to me.

Thank you,
Charlie

On Fri, Apr 28, 2023 at 3:41 PM Cole, Benjamin <Ben.Cole@wsp.com> wrote:

Thank you Mike, for trying the Teams thing with me. Will hold until hear back from you next week. Appreciate the help.

Ben Cole

ben.cole@wsp.com

From: Michael Myers <mmyers@undc.com>
Sent: Friday, April 28, 2023 3:02 PM
To: Cole, Benjamin <Ben.Cole@wsp.com>; Larue III, Anthony J <tony.j.larue@verizon.com>; Charles Louis Brickley <charles.brickley@one.verizon.com>
Cc: Jason R Adkison <jason.r.adkison@one.verizon.com>; Alexander J Masti <alexander.masti@verizon.com>; Hill, Nathaniel RT (Nate) <nathaniel.hill@verizon.com>; Yakaitis, Raymond A. <Raymond.Yakaitis@wsp.com>; Grassi, Laura <Laura.Grassi@wsp.com>
Subject: RE: [E] CHPE Collocated Infrastructure Details_5A and 5B_Verizon

Benjamin:

The files were rejected by the Verizon email server for being too large.

Thank you;

Michael S. Myers

Outside Plant Design Engineer

NY BAU Project Coordinator



From: Cole, Benjamin <Ben.Cole@wsp.com>

Sent: Friday, April 28, 2023 2:05 PM

To: Michael Myers <mmyers@undc.com>; Larue III, Anthony J <tony.j.larue@verizon.com>; Charles Louis Brickley <charles.brickley@one.verizon.com>

Cc: Jason R Adkison <jason.r.adkison@one.verizon.com>; Alexander J Masti <alexander.masti@verizon.com>; Hill, Nathaniel RT (Nate) <nathaniel.hill@verizon.com>; Yakaitis, Raymond A. <Raymond.Yakaitis@wsp.com>; Grassi, Laura <Laura.Grassi@wsp.com>

Subject: RE: [E] CHPE Collocated Infrastructure Details_5A and 5B_Verizon

Thank you Michael, All.

Any luck opening the PDFs that Michael sent? When I sent them as attachments yesterday they were kicked back as undeliverable.

Thanks,

Ben Cole

ben.cole@wsp.com

From: Michael Myers <mmyers@undc.com>

Sent: Friday, April 28, 2023 7:22 AM

To: Larue III, Anthony J <tony.j.larue@verizon.com>; Charles Louis Brickley <charles.brickley@one.verizon.com>; Cole, Benjamin <Ben.Cole@wsp.com>

Cc: Jason R Adkison <jason.r.adkison@one.verizon.com>; Alexander J Masti <alexander.masti@verizon.com>; Hill, Nathaniel RT (Nate) <nathaniel.hill@verizon.com>

Subject: RE: [E] CHPE Collocated Infrastructure Details_5A and 5B_Verizon

Verizon team:

See If You can download the attached PDF's for CHPE Sections 5A and 5B.

If so; This will avoid having to use Benjamin's work arounds.

Thank You;

Michael S. Myers

Outside Plant Design Engineer

NY BAU Project Coordinator



From: Cole, Benjamin <Ben.Cole@wsp.com>

Sent: Thursday, April 27, 2023 3:22 PM

To: Larue III, Anthony J <tony.j.larue@verizon.com>; Charles Louis Brickley <charles.brickley@one.verizon.com>; Yakaitis, Raymond A. <Raymond.Yakaitis@wsp.com>

Cc: Jason R Adkison <jason.r.adkison@one.verizon.com>; Alexander J Masti <alexander.masti@verizon.com>; charles.brickley@verizon.com; Hill, Nathaniel RT (Nate) <nathaniel.hill@verizon.com>; Michael Myers

<mmyers@undc.com>

Subject: RE: [E] CHPE Collocated Infrastructure Details_5A and 5B_Verizon

Hi Tony, Charles,

One easy solution may be for me to send a Teams invite, you to accept and us to transfer the files via that platform.

Alternatively, can you ask Verizon IT support to allow file links from 'wspis.sharepoint.com'?

Thanks,

Ben Cole

ben.cole@wsp.com

From: Cole, Benjamin

Sent: Thursday, April 27, 2023 11:06 AM

To: Larue III, Anthony J <tony.j.larue@verizon.com>; Charles Louis Brickley <charles.brickley@one.verizon.com>; Yakaitis, Raymond A. <Raymond.Yakaitis@wsp.com>

Cc: Jason R Adkison <jason.r.adkison@one.verizon.com>; Alexander J Masti <alexander.masti@verizon.com>; charles.brickley@verizon.com; Hill, Nathaniel RT (Nate) <nathaniel.hill@verizon.com>; Michael Myers <mmyers@undc.com>

Subject: RE: [E] CHPE Collocated Infrastructure Details_5A and 5B_Verizon

I sent Package 5B as an attachment and compressed and uncompressed versions of 5A.

Please let me know if you receive. At least some are coming back as undeliverable.

Thanks,

Ben Cole

ben.cole@wsp.com

From: Cole, Benjamin
Sent: Thursday, April 27, 2023 9:26 AM
To: Larue III, Anthony J <tony.j.larue@verizon.com>; Charles Louis Brickley <charles.brickley@one.verizon.com>; Yakaitis, Raymond A. <Raymond.Yakaitis@wsp.com>
Cc: Jason R Adkison <jason.r.adkison@one.verizon.com>; Alexander J Masti <alexander.masti@verizon.com>; charles.brickley@verizon.com; Hill, Nathaniel RT (Nate) <nathaniel.hill@verizon.com>; Michael Myers <mmyers@undc.com>
Subject: RE: [E] CHPE Collocated Infrastructure Details_5A and 5B_Verizon

Thanks Tony – really appreciate it. Copying our IT guy, @Yakaitis, Raymond A., to help with this issue.

Ben Cole

ben.cole@wsp.com

From: Larue III, Anthony J <tony.j.larue@verizon.com>
Sent: Thursday, April 27, 2023 9:23 AM
To: Cole, Benjamin <Ben.Cole@wsp.com>; Charles Louis Brickley <charles.brickley@one.verizon.com>
Cc: Jason R Adkison <jason.r.adkison@one.verizon.com>; Alexander J Masti <alexander.masti@verizon.com>; charles.brickley@verizon.com; Hill, Nathaniel RT (Nate) <nathaniel.hill@verizon.com>; Michael Myers <mmyers@undc.com>
Subject: Re: [E] CHPE Collocated Infrastructure Details_5A and 5B_Verizon

Good Morning, So looping in our Albany Engineer Charles Brickley - I can't seem to open the files on this email, we have a firewall and it is coming over as a security threat - Could you save it in a different format and try sending it over again.

On Thu, Apr 27, 2023 at 6:18 AM Cole, Benjamin <Ben.Cole@wsp.com> wrote:

Good Morning Tony,

For your review and comment, please see two links below, to the updated plan/profile drawing sets for CHPE Packages 5A and 5B (Rotterdam – Selkirk area).

[CHPE-SUB-0094.03-00-Verizon - CI Owner Package - 5A - 03-08-2023.pdf](#)

[CHPE-SUB-0095.01-00-Verizon - CI Owner Package - 5B - 03-09-2023.pdf](#)

I think this is your territory, but unsure (please advise if not). We are hoping to get any feedback on the CHPE alignment that Verizon may have as soon as possible, as the project is targeting the beginning of June to begin construction in the area. Please let me know any comments or feedback, or if a call is needed to discuss.

Thank You,

Ben Cole

ben.cole@wsp.com

From: Cole, Benjamin

Sent: Wednesday, March 22, 2023 1:22 PM

To: 'Hill, Nathaniel RT (Nate)' <nathaniel.hill@verizon.com>

Subject: RE: [E] CHPE Collocated Infrastructure Details_1C_Verizon

Hi again Nate,

Links to download the most current plans/profiles for 5A and 5B are below.

Not sure if this is your territory or that of others (can you please let me know/confirm?). 5A = Schuette and Albany Counties; 5B = Albany County.

5A

<https://wspis.sharepoint.com/:b:/s/CHPE/Ed93PDLHdA9Kj5HKxZH2L7QByujWHQ2sJSep7pBXmAjdZw?e=OOmVEr>

5B

https://wspis.sharepoint.com/:b:/s/CHPE/EYn3lPrjcnBJm0xel7R2EPYBSn5_Fr60Nbteu_SDf_IzGg?e=DEnUej

Thanks,

Ben Cole

ben.cole@wsp.com

From: Cole, Benjamin

Sent: Wednesday, March 22, 2023 1:10 PM

To: Hill, Nathaniel RT (Nate) <nathaniel.hill@verizon.com>

Subject: RE: [E] CHPE Collocated Infrastructure Details_1C_Verizon

Thanks Nate.

I'm checking with the CHPE team and will get back to you or send a Teams invite. If the timing doesn't work let me know and we can adjust.

On another topic, I don't think we received any feedback on package 5A and 5B (apologies if I missed it). Can I assume you're set with those in terms of alignment and any other topics with regard to the CHPE alignment?

Thanks,

Ben Cole

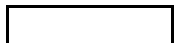
ben.cole@wsp.com

From: Hill, Nathaniel RT (Nate) <nathaniel.hill@verizon.com>
Sent: Wednesday, March 22, 2023 9:06 AM
To: Cole, Benjamin <Ben.Cole@wsp.com>
Subject: Re: [E] CHPE Collocated Infrastructure Details_1C_Verizon

Good morning Ben,

I have pretty much open availability next week, as I'm off the rest of the week after today!

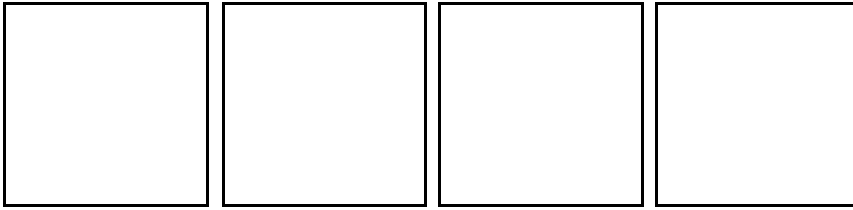
Thanks,



Nate Hill
(he/him)

Outside Plant Design Engineer - Adirondacks/Catskills
NYS/MA/RI Access Engineering

11 Wards Lane
Menands, NY 12205



On Tue, Mar 21, 2023 at 1:51 PM Cole, Benjamin <Ben.Cole@wsp.com> wrote:

Thank you Nate. Best news all day..!

Also, I'm being asked to coordinate with about Culvert 47, with the fiber line that you exchanged messages with Terry Bishop on. Can you be available for a short call (half-hour is my guess) to talk with the CHPE team? What are some options that meet your availability?

Thanks,

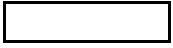
Ben Cole

ben.cole@wsp.com

From: Hill, Nathaniel RT (Nate) <nathaniel.hill@verizon.com>
Sent: Tuesday, March 21, 2023 1:30 PM
To: Cole, Benjamin <Ben.Cole@wsp.com>
Subject: Re: [E] CHPE Collocated Infrastructure Details_1C_Verizon

Separations are acceptable!

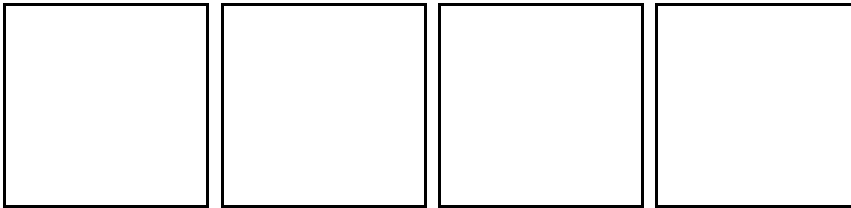
Thanks,



Nate Hill
(he/him)

Outside Plant Design Engineer - Adirondacks/Catskills
NYS/MA/RI Access Engineering

11 Wards Lane
Menands, NY 12205



On Mon, Mar 20, 2023 at 5:25 PM Cole, Benjamin <Ben.Cole@wsp.com> wrote:

Hi Nate,

I understand that updated plans/profiles will be available soon. I'll provide asap but also wanted to touch base and let you know we had not received comments on Packages 1C and 2 and are assuming that the Project default separations are acceptable and you don't have comments on those packages. Please let me know if that's not correct.

Thank You,

Ben Cole

ben.cole@wsp.com

NOTICE: This communication and any attachments ("this message") may contain information which is privileged, confidential, proprietary or otherwise subject to restricted disclosure under applicable law. This message is for the sole use of the intended recipient(s). Any unauthorized use, disclosure, viewing, copying, alteration, dissemination or distribution of, or reliance on, this message is strictly prohibited. If you have received this message in error, or you are not an authorized or intended recipient, please notify the sender immediately by replying to this message, delete this message and all copies from your e-mail system and destroy any printed copies.

-LAEmHhHzdJzBITWfa4Hgs7pbKI

--

Tony J. LaRue

11 Wards Ln 3rd Floor

Menands NY 12204

Engr III Spec-Ntwk Eng&Ops

Package 5B

RUA Signature Pages 1, 2 and Signature

CHPE LLC AND CHPE PROPERTIES, INC.

AND

TOWN OF BETHLEHEM, NEW YORK

**ROAD USE AND CROSSING
AGREEMENT FOR THE
CHAMPLAIN HUDSON POWER EXPRESS ELECTRIC
TRANSMISSION CABLE SYSTEM CROSSING**

DATED MARCH 23, 2022

ADDRESS: Town Hall, 445 Delaware Avenue, Bethlehem, New York 12054

CITY/VILLAGE/TOWN: Town of Bethlehem

COUNTY: Albany

STATE: New York

ROAD USE AND CROSSING AGREEMENT

This Road Use and Crossing Agreement ("Agreement"), entered into this 23rd day of March, 202_ by and between CHPE LLC and its wholly-owned subsidiary CHPE PROPERTIES, INC. (collectively, "CHPE") having offices at 600 Broadway, Albany, New York 12207 and the Town of Bethlehem, New York (the "Town") having offices at 445 Delaware Avenue, Bethlehem, New York 12054.

RECITALS:

WHEREAS, CHPE intends to construct and operate a buried 1,250 megawatt High Voltage Direct Current electric transmission facility consisting of two solid-state cables and related equipment and appurtenances ("Project") pursuant to the Certificate of Environmental Capability and Public Need granted to CHPE by the New York State Public Service Commission ("PSC") on April 20, 2013 (as amended from time to time, the "Certificate"), the Project's Environmental

Management and Construction Plan (as amended from time to time, “EM&CP”) to be approved by the PSC in due course, and other permits and authorizations to conduct certain related activities, including Project construction and Project restoration activities as provided for herein (collectively, “Project Activities”); and

WHEREAS, on June 12, 2019, the Town Board of the Town of Bethlehem (the “Board”) approved revisions to the Project route in the Town through the adoption of Resolution 2019-16; and

WHEREAS, on January 1, 2020, the Climate Leadership and Community Protection Act (“CLCPA”) became law in the State of New York; and

WHEREAS, in order to accomplish Project Activities within the Town, CHPE needs to install and operate buried Project cables in and under a certain Town road known as West Yard Road, as shown on the map attached hereto as Exhibit A (the “Road”); and

WHEREAS, the Town must have assurances from CHPE that CHPE will pay and/or otherwise indemnify the Town for any damage to the Road and any access roads, streets, or other public infrastructure used or traversed by CHPE or its contractors to access the work site for installation of the cable in and under the Road and/or arising from or related to Project construction, maintenance, and occupancy activities; and

NOW, THEREFORE, in consideration of the premises set forth in the recitals above and other good and valuable consideration, the receipt and sufficiency of which are hereby acknowledged, CHPE and the Town, each intending to be legally bound, agree as follows:

1. Rights Granted.

a. The Town hereby acknowledges and confirms its consent to CHPE in accordance with Section 11(3) of the New York State Transportation Corporations Law, to lay down, construct and maintain wires, conductors, conduits and other fixtures in and under the Road in the Town in accordance with the provisions of this Agreement.

2. CHPE Construction Responsibilities.

a. CHPE shall be responsible for obtaining any approvals, permits, and/or orders, including renewals thereof, which are required by governing law to undertake Project Activities affecting the Road.

b. CHPE shall be responsible for ensuring that all debris, garbage, and waste generated by Project Activities are immediately cleaned up and properly are disposed of.

c. CHPE shall not block or obstruct or interfere with the flow of traffic in both lanes of traffic on any Town road except, under severe hardship, a temporary closure lasting no more than four (4) hours. Temporary single lane closures will be permitted periodically during Project Activities taking into account all of the pertinent circumstances, with close coordination with the Town’s Highway Department.

The individuals who have executed this Agreement on behalf of the respective parties expressly represent and warrant that they are authorized to sign on behalf of such entities for the purpose of duly binding such entities to this Agreement.

16. Notice.

Any notice or other communication required or permitted under this Agreement shall be in writing and shall be deemed to have been duly given upon hand delivery, upon the third day following delivery via the United States Postal Service, on the first day following delivery via a nationally registered United States overnight courier service, or on the day when telecopies are sent by facsimile transmission if additional notice is also given under one of the previous three methods within three (3) business days thereafter. For purposes of this Agreement only, any notice to the parties shall be directed to the party as set forth below.

For CHPE:

Champlain Hudson Power Express, Inc.
600 Broadway, Pieter Schuyler Building
Albany, NY 12207
Attn: General Counsel

For Town:

Town Board of the Town of Bethlehem
Town Hall
445 Delaware Avenue
Bethlehem, New York 12054
Attn: Supervisor

17. Assignment.

Neither Party may assign its rights or its obligations under this Agreement in whole or in part without the prior written consent of the other Party, which consent shall not be unreasonably withheld conditioned, or delayed; except no consent of any kind shall be required in the case of an assignment by CHPE (i) in favor of a secured lender or lenders participating in the Closing, (ii) as part of a straight lease arrangement authorized by the General Municipal Law relating to Industrial Development Agencies, or (iii) to a company affiliated with CHPE.

IN WITNESS WHEREOF, CHPE and the Town have caused their respective, duly authorized officers to execute this Road Use and Crossing Agreement of the day and year first above written.

Town of Bethlehem, New York

By:  _____

CHPE LLC and CHPE Properties, Inc.

By: William S. Helmer, E. V. P.

Package 5B
Municipal Utility Tables

Champlain Hudson Power Express

Upland Co-Located Utility Summation Matrix

Revision Date: 04/26/2023 -IFC set

Segment(s)	General Location of Utility				Owner	Utility	Utility
	Station (Starting Point for Parallel and Crossing Point for Perpendicular)	Station (Ending Point for Parallel)	Drawing sheet(s) #	HDD Drawing (if any)			Parallel/ Perpendicular
Selkirk Rail Yard Bypass	51003+64		C—101		Town of Bethlehem	Storm Sewer	Perpendicular
	51003+73	51003+85	C—101		Town of Bethlehem	Storm Sewer	Parallel
	51004+30	51096+25	C—101 to C—107		Town of Bethlehem	Water Line	Parallel
	51005+23	51007+06	C—101		Town of Bethlehem	Storm Sewer	Parallel
	51006+59	51007+60	C—101		Town of Bethlehem	Storm Sewer	Parallel
	51007+06		C—101		Town of Bethlehem	Storm Sewer	Perpendicular
	51010+00		C—101		Town of Bethlehem	Storm Drainage Pipe/Culvert	Perpendicular
	51017+45		C—102		Town of Bethlehem	Storm Sewer	Perpendicular
	51017+45	51020+50	C—102		Town of Bethlehem	Storm Sewer	Parallel
	51017+75	51020+25	C—102		Town of Bethlehem	Water Line	Parallel
	51020+25		C—102		Town of Bethlehem	Storm Sewer	Perpendicular
	51020+75		C—102		Town of Bethlehem	Storm Sewer	Perpendicular
	51025+75	51026+00	C—102		Town of Bethlehem	Storm Sewer	Parallel
	51041+00	51041+15	C—103		Town of Bethlehem	Storm Sewer	Parallel
	51042+01		C—103		Town of Bethlehem	Storm Sewer	Perpendicular
	51055+20		C—104		Town of Bethlehem	Storm Drainage Pipe/Culvert	Perpendicular
	51094+70		C—107		Town of Bethlehem	Storm Drainage Pipe/Culvert	Perpendicular
	51101+90		C—107		Town of Bethlehem	Storm Drainage Pipe/Culvert	Perpendicular
	51107+80	51108+10	C—108	C-301	Town of Bethlehem	Storm Drainage Pipe/Culvert	Parallel
	51108+70		C—108	C-301	Town of Bethlehem	Storm Drainage Pipe/Culvert	Perpendicular
	51112+15		C—108	C-301	Town of Bethlehem	Storm Drainage Pipe/Culvert	Perpendicular
	51114+13		C—108	C-301	Town of Bethlehem	Storm Drainage Pipe/Culvert	Perpendicular
	51132+75	51133+15	C—109		Town of Bethlehem	Storm Drainage Pipe/Culvert	Parallel
	51132+85	51133+15	C—109		Town of Bethlehem	Storm Drainage Pipe/Culvert	Parallel
	51133+29	51133+50	C—109		Town of Bethlehem	Storm Drainage Pipe/Culvert	Parallel
	51134+25	51134+50	C—109		Town of Bethlehem	Storm Drainage Pipe/Culvert	Parallel
	51134+57		C—109		Town of Bethlehem	Storm Drainage Pipe/Culvert	Perpendicular
	51137+81	51137+95	C—110		Town of Bethlehem	Storm Drainage Pipe/Culvert	Parallel

Champlain Hudson Power Express

Upland Co-Located Utility Summation Matrix

Revision Date: 04/26/2023 -IFC set

Segment(s)	General Location of Utility				Owner	Utility	Utility
	Station (Starting Point for Parallel and Crossing Point for Perpendicular)	Station (Ending Point for Parallel)	Drawing sheet(s) #	HDD Drawing (if any)			Parallel/ Perpendicular
Segment 9 (Package 5B) - CSX	51138+18	51138+64	C—110		Town of Bethlehem	Storm Drainage Pipe/Culvert	Parallel
	51138+22	51138+51	C—110		Town of Bethlehem	Storm Drainage Pipe/Culvert	Parallel
	51138+77	51139+08	C—110		Town of Bethlehem	Storm Drainage Pipe/Culvert	Parallel
	51140+40	51141+10	C—110		Town of Bethlehem	Storm Drainage Pipe/Culvert	Parallel
	51140+62	51141+10	C—110		Town of Bethlehem	Storm Drainage Pipe/Culvert	Parallel
	51141+10		C—110		Town of Bethlehem	Storm Drainage Pipe/Culvert	Perpendicular
	51144+00		C—110		Town of Bethlehem	Storm Drainage Pipe/Culvert	Perpendicular
	51148+00		C—110		Town of Bethlehem	Storm Drainage Pipe/Culvert	Perpendicular
	51149+88	51150+21	C—110 to C—111		Town of Bethlehem	Storm Drainage Pipe/Culvert	Parallel
	51149+92	51150+60	C—110 to C—111		Town of Bethlehem	Storm Drainage Pipe/Culvert	Parallel
	51150+25		C—111		Town of Bethlehem	Storm Drainage Pipe/Culvert	Perpendicular
	51155+55		C—111		Town of Bethlehem	Storm Drainage Pipe/Culvert	Perpendicular
	51158+21		C—111		Town of Bethlehem	Storm Drainage Pipe/Culvert	Perpendicular
	51160+40	51160+70	C—111		Town of Bethlehem	Storm Drainage Pipe/Culvert	Parallel
	51160+45	51160+70	C—111		Town of Bethlehem	Storm Drainage Pipe/Culvert	Parallel
	51162+25	51162+50	C—111		Town of Bethlehem	Storm Drainage Pipe/Culvert	Parallel
	51165+11		C—112		Town of Bethlehem	Storm Drainage Pipe/Culvert	Perpendicular
	51166+69	51167+25	C—112		Town of Bethlehem	Storm Drainage Pipe/Culvert	Parallel
	51167+50	51168+00	C—112		Town of Bethlehem	Storm Drainage Pipe/Culvert	Parallel
	51169+93	51170+25	C—112		Town of Bethlehem	Storm Drainage Pipe/Culvert	Parallel
	51170+70	51171+50	C—112		Town of Bethlehem	Storm Drainage Pipe/Culvert	Parallel
	51174+90	51175+20	C—112		Town of Bethlehem	Storm Drainage Pipe/Culvert	Parallel
	51199+50	51240+50	C—114 to C—117		Town of Bethlehem	Water Line	Parallel
	51240+75		C—117	C-315	Town of Bethlehem	Water Line	Perpendicular
	51243+60		C—117	C-315	Town of Bethlehem	Storm Drainage Pipe/Culvert	Perpendicular
	51246+50	51276+50	C—117 to C—119	C-315	Town of Bethlehem	Water Line	Parallel
	51247+80		C—117	C-315	Town of Bethlehem	Storm Drainage Pipe/Culvert	Perpendicular
	51254+50		C—117		Town of Bethlehem	Storm Drainage Pipe/Culvert	Perpendicular
	51271+90		C—119		Town of Bethlehem	Storm Drainage Pipe/Culvert	Perpendicular

Champlain Hudson Power Express

Upland Co-Located Utility Summation Matrix

Revision Date: 04/26/2023 -IFC set

Segment(s)	General Location of Utility				Owner	Utility	Utility
	Station (Starting Point for Parallel and Crossing Point for Perpendicular)	Station (Ending Point for Parallel)	Drawing sheet(s) #	HDD Drawing (if any)			Parallel/ Perpendicular
	51277+30	51277+75	C—119		Town of Bethlehem	Storm Drainage Pipe/Culvert	Parallel

Champlain Hudson Power Express

Upland Co-Located Utility Summation Matrix

Revision Date: 04/26/2023 -IFC set

Segment(s)	General Location of Utility				Owner	Utility	Utility
	Station (Starting Point for Parallel and Crossing Point for Perpendicular)	Station (Ending Point for Parallel)	Drawing sheet(s) #	HDD Drawing (if any)			Parallel/ Perpendicular
Segment 9 (Pac)	51004+30		C—101		Town of New Scotland	Water Line	Perpendicular

Champlain Hudson Power Express

Upland Co-Located Utility Summation Matrix

Revision Date: 04/26/2023 -IFC set

Segment(s)	General Location of Utility				Owner	Utility	Utility
	Station (Starting Point for Parallel and Crossing Point for Perpendicular)	Station (Ending Point for Parallel)	Drawing sheet(s) #	HDD Drawing (if any)			Parallel/ Perpendicular
Segment 9 (Package 5B) - CSX: Selkirk Rail Yard Bypass	51076+25	51082+50	C—106		City of Albany	Water Line	Parallel
	51082+75		C—106		City of Albany	Water Line	Perpendicular
	51108+55		C—108	C-301	City of Albany	Water Line	Perpendicular
	51116+55	51132+10	C—108 to C—109	C-302	City of Albany	Water Line	Parallel
	51119+16		C—108	C-302	City of Albany	Water Line	Perpendicular
	51119+71		C—108	C-302	City of Albany	Water Line	Perpendicular
	51119+90		C—108	C-302	City of Albany	Water Line	Perpendicular
	51131+80		C—109		City of Albany	Water Line	Perpendicular
	51132+00		C—109		City of Albany	Water Line	Perpendicular