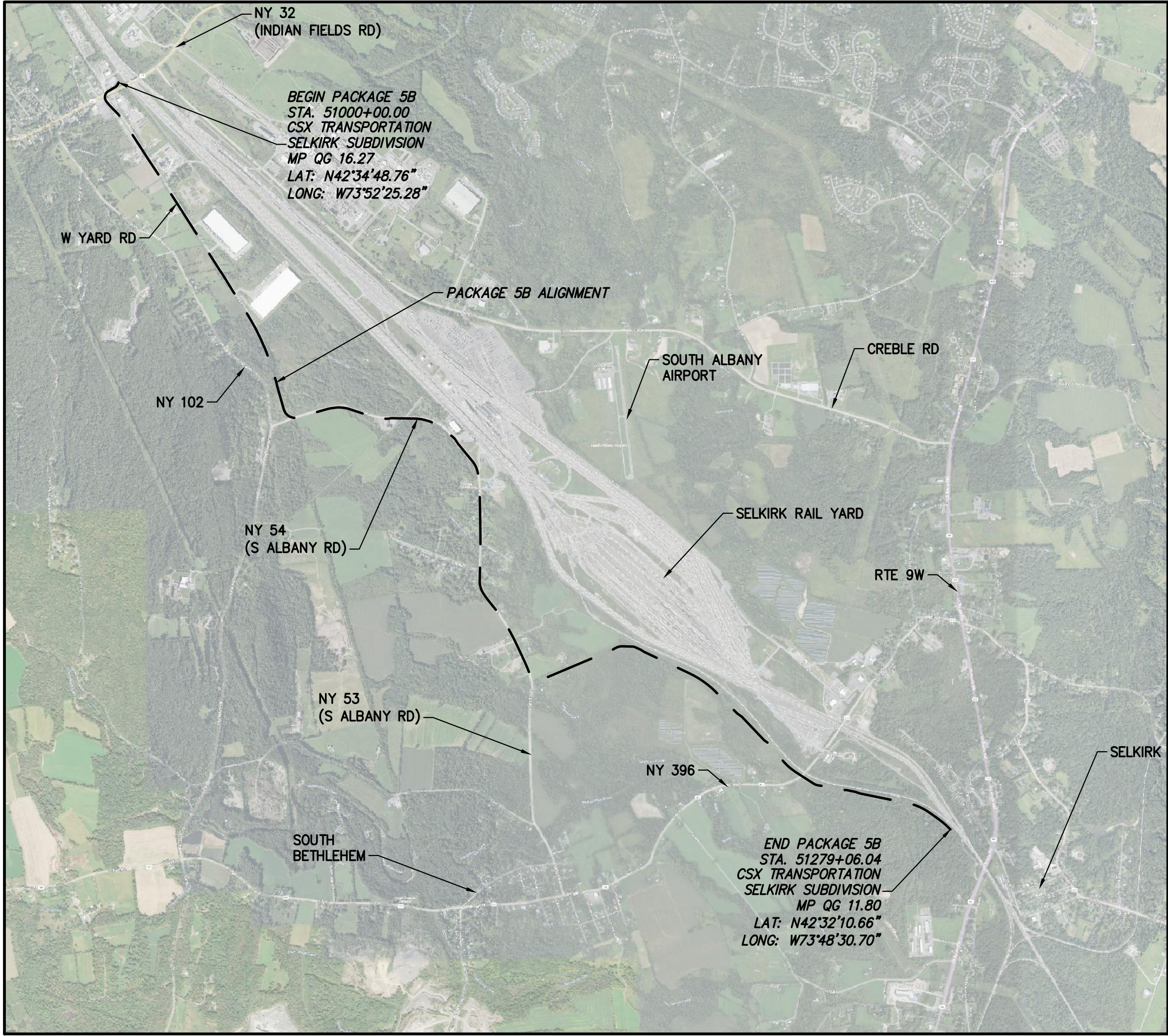


CHAMPLAIN HUDSON POWER EXPRESS

SEGMENT 9 (PACKAGE 5B) CSX: SELKIRK RAIL YARD BYPASS

ALBANY COUNTY, NEW YORK

ISSUED FOR CONSTRUCTION SUBMISSION PLANS



SITE LOCATION MAP
SCALE: 1" = 2000'



IT IS A VIOLATION OF LAW FOR ANY PERSON, UNLESS THEY ARE ACTING UNDER THE DIRECTION OF A LICENSED PROFESSIONAL ENGINEER, ARCHITECT, LANDSCAPE ARCHITECT OR LAND SURVEYOR TO ALTER AN ITEM IN ANY WAY. IF AN ITEM BEARING THE STAMP OF A LICENSED PROFESSIONAL IS ALTERED, THE ALTERING ENGINEER, ARCHITECT, LANDSCAPE ARCHITECT OR LAND SURVEYOR SHALL STAMP THE DOCUMENT AND INCLUDE THE NOTATION "ALTERED BY" FOLLOWED BY THEIR SIGNATURE, THE DATE OF SUCH ALTERATION, AND A SPECIFIC DESCRIPTION OF THE ALTERATION.

0	06/09/2023	ISSUED FOR CONSTRUCTION SUBMISSION				BV	TK		
No.	DATE	SUBMITTAL / REVISION DESCRIPTION				DB	APP		

CHAMPLAIN HUDSON POWER EXPRESS
SEGMENT 9 (PACKAGE 5B) - CSX: SELKIRK RAIL YARD BYPASS
COVER SHEET

DRAWN BY:	AR	DESIGNED BY:	BV	APPROVED BY:	TK	SCALE	AS SHOWN	DATE	06/09/2023
						REV. NO.	0	SH. NO.	

KIEWIT PROJECT NO.
21162

DRAWING NO.

G-000

File: P:\KIE-CHPE\3-DES\02_RDM\SHITS\PSB\21162_5B_G-001.DWG Saved: 6/7/2023 8:03:37 PM Plotted: 6/7/2023 8:07:10 PM Current User: Brian.Vines LastSavedBy: Brian.Vines

1

SHEET LIST TABLE	
DRAWING NUMBER	SHEET TITLE
PACKAGE 5B: GENERAL SHEETS	
G-000	COVER SHEET
G-001	SHEET INDEX
G-002	GENERAL NOTES 1 OF 2
G-003	GENERAL NOTES 2 OF 2
G-004	CSX GENERAL NOTES
G-005	LEGEND AND ABBREVIATIONS
G-006	PLAN AND PROFILE KEY MAP
G-007	SPLICE, LINK BOX, AND FIBER OPTIC HANDHOLE LOCATION TABLES
G-010	EM&CP TABLES 1 OF 4
G-011	EM&CP TABLES 2 OF 4
G-012	EM&CP TABLES 3 OF 4
G-013	EM&CP TABLES 4 OF 4
G-020	RESTORATION NOTES
PACKAGE 5B: PLAN AND PROFILE SHEETS	
C-101	STA. 51000+00.00 TO STA. 51015+00.00 PLAN AND PROFILE
C-102	STA. 51015+00.00 TO STA. 51030+00.00 PLAN AND PROFILE
C-103	STA. 51030+00.00 TO STA. 51045+00.00 PLAN AND PROFILE
C-104	STA. 51045+00.00 TO STA. 51060+00.00 PLAN AND PROFILE
C-105	STA. 51060+00.00 TO STA. 51075+00.00 PLAN AND PROFILE
C-106	STA. 51075+00.00 TO STA. 51090+00.00 PLAN AND PROFILE
C-107	STA. 51090+00.00 TO STA. 51105+00.00 PLAN AND PROFILE
C-108	STA. 51105+00.00 TO STA. 51120+00.00 PLAN AND PROFILE
C-109	STA. 51120+00.00 TO STA. 51135+00.00 PLAN AND PROFILE
C-110	STA. 51135+00.00 TO STA. 51150+00.00 PLAN AND PROFILE
C-111	STA. 51150+00.00 TO STA. 51165+00.00 PLAN AND PROFILE
C-112	STA. 51165+00.00 TO STA. 51180+00.00 PLAN AND PROFILE
C-113	STA. 51180+00.00 TO STA. 51195+00.00 PLAN AND PROFILE
C-114	STA. 51195+00.00 TO STA. 51210+00.00 PLAN AND PROFILE
C-115	STA. 51210+00.00 TO STA. 51225+00.00 PLAN AND PROFILE
C-116	STA. 51225+00.00 TO STA. 51240+00.00 PLAN AND PROFILE
C-117	STA. 51240+00.00 TO STA. 51255+00.00 PLAN AND PROFILE
C-118	STA. 51255+00.00 TO STA. 51270+00.00 PLAN AND PROFILE
C-119	STA. 51270+00.00 TO STA. 51279+06.04 PLAN AND PROFILE
PACKAGE 5B: OFF-SITE ACCESS ROAD AND ROUTE PLANS	
C-201	TEMP OFF-SITE ACCESS ROADS (5B-01-RD)
C-202	TEMP OFF-SITE ACCESS ROADS (5B-01-RD)
C-203	TEMP OFF-SITE ACCESS ROADS (5B-01A-RD)
C-204	TEMP OFF-SITE ACCESS ROADS (5B-02-RD)
C-205	TEMP OFF-SITE ACCESS ROADS (5B-02-RD)
C-206	TEMP OFF-SITE ACCESS ROADS (5B-01-RTE)
C-207	TEMP OFF-SITE ACCESS ROADS (5B-01-RTE)
PACKAGE 5B: HDD TRENCHLESS PLANS	
C-301	PLAN AND PROFILE – HDD 87B CONDUIT 1
C-302	PLAN AND PROFILE – HDD 87B CONDUIT 1
C-303	PLAN AND PROFILE – HDD 87B CONDUIT 2
C-304	PLAN AND PROFILE – HDD 87B CONDUIT 2
C-305	PLAN AND PROFILE – HDD 88 CONDUIT 1
C-306	PLAN AND PROFILE – HDD 88 CONDUIT 1
C-307	PLAN AND PROFILE – HDD 88 CONDUIT 2
C-308	PLAN AND PROFILE – HDD 88 CONDUIT 2

2

SHEET LIST TABLE	
DRAWING NUMBER	SHEET TITLE
C-309	PLAN AND PROFILE – HDD 89 CONDUIT 1
C-310	PLAN AND PROFILE – HDD 89 CONDUIT 1
C-311	PLAN AND PROFILE – HDD 89 CONDUIT 1
C-312	PLAN AND PROFILE – HDD 89 CONDUIT 2
C-313	PLAN AND PROFILE – HDD 89 CONDUIT 2
C-314	PLAN AND PROFILE – HDD 89 CONDUIT 2
C-315	PLAN AND PROFILE – HDD 90 CONDUIT 1
C-316	PLAN AND PROFILE – HDD 90 CONDUIT 2
PACKAGE 5B: EROSION AND SEDIMENT CONTROL PLANS	
C-400	E&CS KEY PLAN
C-401	STA 51000+00 TO STA 51025+00
C-402	STA 51025+00 TO STA 51055+00
C-403	STA 51055+00 TO STA 51085+00
C-404	STA 51085+00 TO STA 51115+00
C-405	STA 51115+00 TO STA 51145+00
C-406	STA 51145+00 TO STA 51175+00
C-407	STA 51175+00 TO STA 51205+00
C-408	STA 51205+00 TO STA 51235+00
C-409	STA 51235+00 TO STA 51265+00
C-410	STA 51265+00 TO STA 51279+21
PACKAGE 5B: MAINTENANCE AND PROTECTION OF TRAFFIC PLANS	
C-501	WORK ZONE TRAFFIC CONTROL NOTES, LEGEND AND ABBREVIATIONS
C-502	WORK ZONE TRAFFIC CONTROL
C-503	WORK ZONE TRAFFIC CONTROL
C-504	WORK ZONE TRAFFIC CONTROL
C-505	WORK ZONE TRAFFIC CONTROL
C-506	WORK ZONE TRAFFIC CONTROL W. YARD ROAD CLOSURE
C-507	WORK ZONE TRAFFIC CONTROL SOUTH ALBANY ROAD DETOUR
PACKAGE 5B: DETAILS	
C-601	EROSION AND SEDIMENT CONTROL DETAILS
C-602	EROSION AND SEDIMENT CONTROL DETAILS
C-604	EROSION AND SEDIMENT CONTROL DETAILS
C-611	WETLAND CROSSING DETAILS
C-612	WATERBAR DETAILS
C-613	WETLAND WORKING SURFACE DETAILS
C-614	TYPICAL TEMPORARY SHORING DETAILS
C-621	TRENCHING DETAILS
C-625	CSX CROSSING DETAILS 1 OF 2
C-626	CSX CROSSING DETAILS 2 OF 2
C-627	SECURITY GATE DETAIL
C-631	SURFACE RESTORATION DETAILS
PACKAGE 5B: DETAILS-STRUCTURAL	
S-700	SPLICE VAULT PLAN AND ELEVATION
S-701	SPLICE VAULT SECTION AND DETAILS
S-702	SPLICE VAULT ANCHOR AND EMBED DETAILS
S-703	SPLICE VAULT DETAILS
S-705	STRUCTURAL GENERAL NOTES AND ABBREVIATIONS
S-711	FRP LINK BOX HANDHOLE
S-720	REINFORCING TRAY OVER UTILITIES
S-721	REINFORCING TRAY DETAILS
S-771	FRP COMMUNICATION HANDHOLE

3

SHEET LIST TABLE	
DRAWING NUMBER	SHEET TITLE
PACKAGE 5B: DETAILS-ELECTRICAL	
C-801	ABOVE GROUND MARKING DETAILS
C-802	TYPICAL VAULT SNAKING DETAILS
C-803	TYPICAL VAULT GROUNDING DETAILS
C-807	SPLICE VAULT AND CABLE MARKING DETAILS
C-808	TYPICAL OPEN PIT SPLICE CASING DETAILS
C-809	OPEN PIT SPLICE GROUNDING DETAILS
C-811	STEEL SUPPORT DETAILS
C-812	VAULT CONNECTION DETAILS
PACKAGE 5B: DETAILS-COMMUNICATIONS	
C-852	ENCLOSED VAULT W/ FIBER OPTICS
C-853	OPEN SPLICE W/ FIBER OPTIC HAND HOLE
C-854	FIBER OPTIC HAND HOLE DETAILS
C-855	FIBER OPTIC SPLICE DIAGRAM
C-856	FIBER OPTIC SLACK ENCLOSURE DETAIL
PACKAGE 6: DETAILS-UTILITIES	
C-901	UTILITY TYPICAL SEPARATION DETAILS

4



IT IS A VIOLATION OF LAW FOR ANY PERSON, UNLESS THEY ARE ACTING UNDER THE DIRECTION OF A LICENSED PROFESSIONAL ENGINEER, ARCHITECT, LANDSCAPE ARCHITECT OR LAND SURVEYOR TO ALTER AN ITEM IN ANY WAY. IF AN ITEM BEARING THE STAMP OF A LICENSED PROFESSIONAL IS ALTERED, THE ALTERING ENGINEER, ARCHITECT, LANDSCAPE ARCHITECT OR LAND SURVEYOR SHALL STAMP THE DOCUMENT AND INCLUDE THE NOTATION "ALTERED BY" FOLLOWED BY THEIR SIGNATURE, THE DATE OF SUCH ALTERATION, AND A SPECIFIC DESCRIPTION OF THE ALTERATION.

0	06/09/2023	ISSUED FOR CONSTRUCTION SUBMISSION	BV	TK	
No.	DATE	SUBMITTAL / REVISION DESCRIPTION	DB	APP	

CHAMPLAIN HUDSON POWER EXPRESS

SEGMENT 9 (PACKAGE 5B) - CSX: SELKIRK RAIL YARD BYPASS

SHEET INDEX

										G-001	
DRAWN BY: AR		DESIGNED BY: BV		APPROVED BY: TK		SCALE AS SHOWN		DATE		06/09/2023	
						REV. NO. 0		SH.NO.			

KIEWIT PROJECT NO.
21162

DRAWING NO.

G-001

A

B

HDD PLAN & PROFILE NOTES:

3. UNLESS NOTED OTHERWISE ON C-300 SERIES HDD PLAN AND PROFILES, EACH SITE INCLUDES TWO HDD BORES. BOTH BORES INCLUDE A 10" DIAMETER HDPE OR 8" FPVC CONDUIT FOR A HVDC ELECTRICAL TRANSMISSION CABLE. ONE OF THE BORES WILL ALSO INCLUDE A 3" CONDUIT BUNDLED IN THE PULLBACK BUNDLE FOR A TELECOMMUNICATION LINE.
2. MINIMUM HORIZONTAL SPACING BETWEEN CONDUIT 1 AND CONDUIT 2 SHALL BE MAINTAINED AT THE DESIGN LOCATION AND WITHIN SPECIFIED TOLERANCE AS DETERMINED BY ELECTRICAL ENGINEERING ON BEHALF OF THE OWNERS. IN CONSTRUCTION, THE HORIZONTAL SPACING SHALL BE CONTROLLED AND MAINTAINED SUCH THAT THE AS-BUILT SPACING SHALL NEVER BE CLOSER THAN THE SPECIFIED HORIZONTAL SPACING PRESENTED ON THE INDIVIDUAL HDD SHEET.
3. MAXIMUM VERTICAL DEPTH OF CONDUIT 1 AND CONDUIT 2 SHALL BE MAINTAINED AT THE DESIGN LOCATION AND WITHIN SPECIFIED TOLERANCE AS DETERMINED BY ELECTRICAL ENGINEERING ON BEHALF OF THE OWNERS.
4. HDD CONTRACTOR SHALL COORDINATE WITH OVERHEAD ELECTRIC OWNER/OPERATOR TO HAVE TEMPORARY PROTECTIVE SLEEVES INSTALLED ON OVERHEAD POWER LINES THAT CROSS THE ACCESS OR WORKING AREA OF THE WORK SITE.
5. SPT N-VALUES SHOWN ON THE C-300 SERIES DRAWINGS ARE NOT CORRECTED FOR SAMPLER SIZE OR HAMMER ENERGY. REFERENCE BORING LOGS AND GEOTECHNICAL REPORTS FOR ADDITIONAL INFORMATION.
6. HDD ENTRY PITS ARE SUBJECT TO RELOCATION WITHIN 5-FEET OF DESIGNED ENTRY POINT ON PLANS AND REMAIN WITHIN THE CONFINES OF THE SPECIFIED HDD WORK AREA.
7. HDD EXIT PITS ARE SUBJECT TO RELOCATION WITHIN 10-FEET OF DESIGNED EXIT POINT ON PLANS AND REMAIN WITHIN THE CONFINES OF THE SPECIFIED HDD WORK AREA.
8. HDD CONDUIT PIPE ASSEMBLY AND PULLBACK DIRECTION ARE SUBJECT TO CHANGE.
9. ALL BURIED UTILITY DEPTHS ARE APPROXIMATE. PRIOR TO ANY HDD CONSTRUCTION, EXCAVATION, EXPLORATORY BORING, OR UTILITY LOCATE EXCAVATION, CONTRACTOR MUST CONTACT 811, OBTAIN A PERMIT, MAINTAIN THE PERMIT CURRENT UNTIL CONTRACTOR WORK TASK HAS BEEN COMPLETED AND ABIDE BY ALL STATE EXCAVATION REQUIREMENTS, REPORT ALL CONFLICTING UTILITIES THAT REQUIRE MODIFICATION TO THE HDD DESIGN TO THE ENGINEER WITHIN 12 HOURS OF THE DISCOVERY.
10. THE MINIMUM SEPARATION DISTANCE FROM THE CLOSEST PROXIMITY OF ANY EXISTING SUBSURFACE UTILITY SHALL NOT BE LESS THAN 120 INCHES AS MEASURED FROM THE OUTSIDE EDGE OF THE UTILITY TO THE OUTSIDE EDGE OF THE FULLY CONSTRUCTED HDD BORE PATH UNLESS GREATER SEPARATION IS SHOWN ON THE C-300 SERIES DRAWINGS.
11. ALL COORDINATES REFERENCE NEW YORK STATE PLANE FOR THE APPROPRIATE ZONE AND ELEVATIONS REFERENCE NAD83. MEASUREMENTS ARE IN FEET.
12. SITE BOUNDRIES, ENVIRONMENTAL BARRIER LOCATION, AND ENTRY & EXIT LOCATIONS SHALL BE STAKED FOR THE HDD DRILLING TEAM TO REFERENCE DURING CONSTRUCTION.
13. HDD CONTRACTOR SHALL PROVIDE AN AS-BUILT PLAN AND PROFILE OF THE PILOT BORE PATH INDICATING COMPLIANCE WITH PROJECT SPECIFICATIONS AND FOR APPROVAL PRIOR TO INITIATING REAMING OPERATIONS. PROVIDE ACTUAL ENTRY & EXIT COORDINATES AND ELEVATIONS ON THE AS-BUILT PLAN.
14. HDD CONTRACTOR TO PLACE A MECHANICAL TEMPORARY CAP ON EACH END OF THE INSTALLED CONDUITS THAT WILL BE SUFFICIENT TO PROTECT THE INSTALLATION FROM DAMAGE OR INTRUSION OF WATER OR OTHER DETRIMENTAL MATERIAL INTO THE CONDUITS. DUCT TAPE OR PLASTIC BAGS ARE NOT ACCEPTABLE AS A MECHANICAL TEMPORARY CAP.

1. THE PROPOSED DISTURBANCE FOR THE TRENCH WILL BE LIMITED TO THE WIDTH OF THE TRENCH SECTIONS DEPICTED ON C-621 INCLUDING THE OPTION TO BENCH OR SLOPE TRENCH WHERE SPACE IS AVAILABLE AND TRENCH IS NOT LOCATED IN A ROADWAY OR IN PAVEMENT.
2. TEMPORARY ACCESS AND WORK AREAS DEPICTED IN THESE PLANS SHALL BE RESTORED TO THEIR ORIGINAL CONDITION AND CHAIRMAN TO THE EXTENT FEASIBLE, UNLESS DONE SO WOULD INTERFERE WITH THE SAFE AND RELIABLE OPERATION AND MAINTENANCE OF THE PROJECT. RESTORATION ACTIVITIES MAY VARY WITH THE SPECIFIC AREA TO BE RESTORED BUT WILL CONSIST PREDOMINANTLY OF RESTORING TOPOGRAPHY TO ORIGINAL GRADIENTS AND RESEEDING EXCAVATED AREAS OVER THE TRENCH AS IDENTIFIED IN THE DETAIL SHEETS AND THE EMCP NARRATIVE.



File: P:\KIE-CHPE\3-DES\02-RDW\SHTS\PSB\21162_5B_G-002 - 004.DWG Saved: 6/7/2023 6:26:29 PM Plotted: 6/7/2023 8:07:19 PM Current User: Brian.Vines LastSavedBy: Dofne.Arellano

CIVIL NOTES:

1. THE CIVIL ENGINEER OF RECORD (EOR) LICENSED PROFESSIONAL ENGINEER SEAL AND SIGNATURE ON THE PLAN AND PROFILE KEY MAP SHEET, SPLICE LOCATION TABLE SHEET, PLAN AND PROFILE SHEETS, TEMP OFF-SITE ACCESS ROADS SHEETS, AND TEMP OFF-SITE ACCESS ROUTES SHEETS IS LIMITED TO THE SCOPE OF DESIGN AS OUTLINED BELOW:
- A. THE CIVIL EOR DESIGN SCOPE INCLUDES THE FOLLOWING:

a. HORIZONTAL AND VERTICAL GEOMETRY OF THE TRENCH AND CONDUITS

b. GEOMETRIC DESIGN OF TEMPORARY ROADS AND WORK AREAS

1. THESE PLANS DEPICT THE GENERAL LAYOUT AND GRADING EXTENTS OF THE ROADS AND WORK AREAS. GEOMETRIC INFORMATION FOR TEMPORARY ROADS AND WORK AREAS IS NOT SHOWN IN THESE PLANS AND WILL BE AVAILABLE UPON REQUEST IN EXCEL OR CIVIL 3D 2020 DIGITAL FORMAT.
2. THE CIVIL EOR IS NOT RESPONSIBLE FOR THE ELECTRICAL DESIGN DEPICTED IN THESE PLANS.
- A. THE CERTIFICATE HOLDER (CHPE LLC) IS RESPONSIBLE FOR THE FOLLOWING ELECTRICAL DESIGN DEPICTED ON THESE PLANS INCLUDING THE FOLLOWING:

a. DESIGN ASSOCIATED WITH THE ELECTRICAL TRANSMISSION LINE AND APPURTENANCES INCLUDING BUT NOT LIMITED TO PUBLIC SAFETY CONSIDERATIONS AND RISK ASSESSMENT(S); MATERIAL SELECTION; AND INTERFERENCE, THERMAL, AND STRAY CURRENT EFFECTS.

b. DESIGN OF THE HVDC (HIGH VOLTAGE DIRECT CURRENT) CABLE, FIBER OPTIC CABLE, SPLICE CONNECTIONS, AND CABLE POLARITY

c. CONDUIT SPACING (SEPARATION BETWEEN THE CABLES AND CONDUITS, AND OTHER CLEARANCE REQUIREMENTS FOR THE CABLE OR CONDUIT); DETERMINING MINIMUM OR MAXIMUM DEPTH OF COVER FOR THE CONDUITS OR CABLE; AND MATERIAL SELECTION OF TRENCH BACKFILL OR CONDUIT
- B. THE CIVIL EOR IS ADDITIONALLY NOT RESPONSIBLE FOR THE FOLLOWING DESIGN:

a. CABLE PULLING FORCE CALCULATIONS OR INSTALLATION OF CABLES INCLUDING CABLE PULLING DIRECTION

b. VERIFYING ACTUAL (3-DIMENSIONAL) CABLE LENGTHS FOR PURPOSES OF ORDERING MATERIALS

c. ANY RISK ASSESSMENTS RELATED TO THE ELECTRICAL DESIGN INCLUDING THOSE NOTED IN THE CERTIFICATE HOLDER (CHPE LLC) RESPONSIBILITIES ABOVE.
3. THE MAJORITY OF STORM WATER MANAGEMENT AND EROSION & SEDIMENT CONTROL DESIGN IS INCLUDED IN THE EROSION AND SEDIMENT CONTROL PLANS AND DETAILS; THE REMAINDER IS INCLUDED IN THE TEMP OFF-SITE ACCESS ROAD PLANS AND WILL BE SEALED BY BOTH THE CIVIL AND DRAINAGE EOR. THE CIVIL EOR DESIGN SCOPE IS DEFINED IN NOTES 1 AND 2 ABOVE; THE DRAINAGE EOR IS RESPONSIBLE FOR STORM WATER MANAGEMENT AND EROSION & SEDIMENT CONTROL DESIGN INCLUDED IN THE TEMP OFF-SITE ACCESS ROAD PLANS.
4. IT IS THE CONTRACTOR'S RESPONSIBILITY TO ENSURE THE MINIMUM ALLOWABLE BENDING RADIUS OF THE CONDUITS MEETS THE MANUFACTURER'S REQUIREMENTS.
5. IT IS THE RESPONSIBILITY OF THE CONTRACTOR TO IMPLEMENT SAFETY MEASURES AND/OR AN OPERATIONAL SAFETY PLAN DURING CONSTRUCTION TO PROTECT PERSONNEL AND VEHICLES FROM STEEP SLOPES OR HAZARDS ADJACENT TO ROADS AND WORK AREAS. THIS DESIGN PROVIDES TEMPORARY ACCESS AND WORK AREAS FOR CONSTRUCTION OPERATIONS FOR LOW-SPEED CONSTRUCTION TRAFFIC WITHIN A SITE THAT IS RESTRICTED FROM PUBLIC ACCESS.
- A. THESE PLANS DO NOT INCLUDE COMPREHENSIVE ROADSIDE SAFETY MEASURES OR HARDWARE, INCLUDING BUT NOT LIMITED TO: BARRIERS, GUARDRAIL, SIGNING, GATES, DELINEATORS, AND SAFETY BERMS.
- B. ACCESS ROADS ARE DESIGNED FOR A DESIGN SPEED OF 15 MPH FOR CRUSHED ROCK SURFACING (GRAVEL/AGGREGATE SURFACING). IT WILL BE THE CONTRACTOR'S RESPONSIBILITY TO ENSURE VEHICLES ARE ADEQUATELY EQUIPPED FOR ROAD CONDITIONS, AND ROADS ARE ADEQUATELY MAINTAINED FOR SAFETY.
- C. IT IS THE CONTRACTOR'S RESPONSIBILITY TO DETERMINE THE STABILITY OF AND/OR SETBACKS FROM STEEP SLOPES, SHORING, AND WALLS ADJACENT TO VEHICULAR TRAFFIC OR NEAR PLACEMENT OF CONSTRUCTION EQUIPMENT (OR MATERIALS) AS DETERMINED BY A GEOTECHNICAL ENGINEER.
6. IT IS THE CONTRACTOR'S RESPONSIBILITY TO CONFIRM EXISTING STRUCTURES, PIPES, ROADS, ROUTES, OR OTHER PAVED AREAS ARE ADEQUATE FOR CONSTRUCTION TRAFFIC AND VEHICLE LOADING.
7. AS DESCRIBED IN THE EM&CP DOCUMENTS, THE DESIGN HEREIN IS BASED ON GRADES BEING RESTORED TO PRE-CONSTRUCTION CONDITIONS AFTER CONSTRUCTION HAS BEEN COMPLETED.

NATIONAL GRID NOTES

1. THE CONTRACTOR SHALL OBSERVE AND ABIDE BY THE APPLICABLE POWER LINE SAFETY REGULATIONS 29 C.F.R. § 1926.1406 – 1926.1411.
2. THE CONTRACTOR SHALL TRAIN EMPLOYEES WORKING AS DEDICATED SPOTTERS IN ACCORDANCE WITH 29 C.F.R. § 1926.1408(G)(2).
3. CONSTRUCTION UNDER TRANSMISSION LINES REQUIRES A DEDICATED SPOTTER, AS APPLICABLE.
4. THE CONTRACTOR SHALL SUBMIT QUALIFIED INDIVIDUALS' RESUMES TO NATIONAL GRID.
5. A NATIONAL GRID GAS REPRESENTATIVE SHALL BE ON SITE WHILE CONSTRUCTION ACTIVITIES OCCUR NEAR NATIONAL GRID GAS PIPELINE CROSSINGS.
6. THE CONTRACTOR SHALL EXPOSE NATIONAL GRID PIPELINES COMPLETELY (360-DEGREE VIEW OF THE PIPELINE) AT EACH CROSSING LOCATION AND LEAVE THE PIPELINE EXPOSED WHILE ANY HDD PASSES BELOW NATIONAL GRID'S PIPELINE.



IT IS A VIOLATION OF LAW FOR ANY PERSON, UNLESS THEY ARE ACTING UNDER THE DIRECTION OF A LICENSED PROFESSIONAL ENGINEER, ARCHITECT, LANDSCAPE ARCHITECT OR LAND SURVEYOR TO ALTER AN ITEM IN ANY WAY. IF AN ITEM BEARING THE STAMP OF A LICENSED PROFESSIONAL IS ALTERED, THE ALTERING ENGINEER, ARCHITECT, LANDSCAPE ARCHITECT OR LAND SURVEYOR SHALL STAMP THE DOCUMENT AND INCLUDE THE NOTATION "ALTERED BY" FOLLOWED BY THEIR SIGNATURE, THE DATE OF SUCH ALTERATION, AND A SPECIFIC DESCRIPTION OF THE ALTERATION.

0	06/09/2023	ISSUED FOR CONSTRUCTION SUBMISSION	BV	TK	
No.	DATE	SUBMITTAL / REVISION DESCRIPTION	DB	APP	

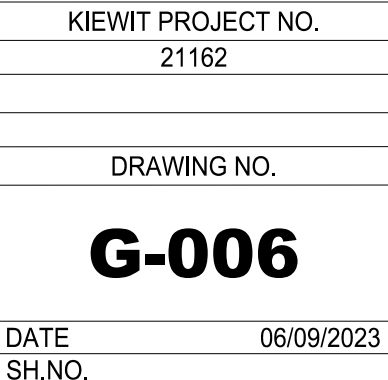
CHAMPLAIN HUDSON POWER EXPRESS
SEGMENT 9 (PACKAGE 5B) - CSX: SELKIRK RAIL YARD BYPASS
GENERAL NOTES 2 OF 2

DRAWN BY:	AR	DESIGNED BY:	BV	APPROVED BY:	TK	SCALE	AS SHOWN	DATE	06/09/2023
						REV. NO.	0	SH.NO.	

KIEWIT PROJECT NO.	21162
DRAWING NO.	G-003



B



File: P:\KIE-CHPE\3-DES\02-RDM\GHTS\PSB\21162_5B_G-010 - 013.DWG Saved: 6/8/2023 1:27:06 PM Plotted: 6/8/2023 1:36:32 PM Current User: Brian.Vines LastSavedBy: petar.lukacevic

SEGMENT 9 – THREATENED AND ENDANGERED SPECIES

TABLE 9–3. RTE SPECIES IMPACT AVOIDANCE AND MINIMIZATION EFFORTS						
ESA TYPE	STA. START	STA. END	BMPs	CONTRACTOR ACTIONS	ENVIRONMENTAL INSPECTOR ACTIONS	TIME OF YEAR RESTRICTION
ESA 9	51000+00	51279+06.04	(A) CONDUCT TREE CLEARING BETWEEN OCTOBER 31 AND MARCH 31. TREE CLEARING IS NOT ALLOWED BETWEEN APRIL 1 AND OCTOBER 30. (B) DURING THE PRECONSTRUCTION SURVEY, THE CONTRACTORS WOULD IDENTIFY LARGE LIVE OR DEAD TREES WITH PEELING BARK, INCLUDING LARGE SPECIMENS OF SHAGBARK HICKORY (CARYA OVATA), WITH THE POTENTIAL TO SERVE AS MATERNITY OR ROOST TREES AND THESE WOULD BE MARKED. POTENTIAL ROOST TREES IDENTIFIED WITHIN THE CONSTRUCTION LIMITS WOULD BE AVOIDED WHERE POSSIBLE DURING CONSTRUCTION ACTIVITIES.	1. TREES IDENTIFIED BY THE ENVIRONMENTAL INSPECTOR WILL BE AVOIDED WHERE POSSIBLE DURING CONSTRUCTION ACTIVITIES. 2. ALL TREE REMOVAL WILL FOLLOW TIME OF YEAR RESTRICTION.	1. IDENTIFY AND FLAG LARGE SPECIMEN TREES, LIVE OR DEAD, WITH PEELING BARK, INCLUDING SHAGBARK HICKORY (CARYA OVATA) WHICH COULD POTENTIALLY SERVE AS MATERNITY OR ROOST TREES.	TREE REMOVAL WILL BE CONDUCTED DURING THE WINTER MONTHS (OCTOBER 31–MARCH31). TREE CLEARING BETWEEN APRIL 1 – OCTOBER 30 IS PROHIBITED.
			(A) CONDUCT TREE CLEARING BETWEEN OCTOBER 31 AND MARCH 31. TREE CLEARING IS NOT ALLOWED BETWEEN APRIL 1 AND OCTOBER 30. (B) DURING THE PRECONSTRUCTION SURVEY, THE CONTRACTORS WOULD IDENTIFY LARGE LIVE OR DEAD TREES WITH PEELING BARK, INCLUDING LARGE SPECIMENS OF SHAGBARK HICKORY (CARYA OVATA), WITH THE POTENTIAL TO SERVE AS MATERNITY OR ROOST TREES AND THESE WOULD BE MARKED. POTENTIAL ROOST TREES IDENTIFIED WITHIN THE CONSTRUCTION LIMITS WOULD BE AVOIDED WHERE POSSIBLE DURING CONSTRUCTION ACTIVITIES.			
ESA 4	51000+00	51279+06.04	(A) CONDUCT TREE CLEARING BETWEEN OCTOBER 31 AND MARCH 31. TREE CLEARING IS NOT ALLOWED BETWEEN APRIL 1 AND OCTOBER 30. (B) DURING THE PRECONSTRUCTION SURVEY, THE CONTRACTORS WOULD IDENTIFY LARGE LIVE OR DEAD TREES WITH PEELING BARK, INCLUDING LARGE SPECIMENS OF SHAGBARK HICKORY (CARYA OVATA), WITH THE POTENTIAL TO SERVE AS MATERNITY OR ROOST TREES AND THESE WOULD BE MARKED. POTENTIAL ROOST TREES IDENTIFIED WITHIN THE CONSTRUCTION LIMITS WOULD BE AVOIDED WHERE POSSIBLE DURING CONSTRUCTION ACTIVITIES.	1. TREES IDENTIFIED BY THE ENVIRONMENTAL INSPECTOR WILL BE AVOIDED WHERE POSSIBLE DURING CONSTRUCTION ACTIVITIES. 2. ALL TREE REMOVAL WILL FOLLOW TIME OF YEAR RESTRICTION.	1. IDENTIFY AND FLAG LARGE SPECIMEN TREES, LIVE OR DEAD, WITH PEELING BARK, INCLUDING SHAGBARK HICKORY (CARYA OVATA) WHICH COULD POTENTIALLY SERVE AS MATERNITY OR ROOST TREES.	TREE REMOVAL WILL BE CONDUCTED DURING THE WINTER MONTHS (OCTOBER 31–MARCH31). TREE CLEARING BETWEEN APRIL 1 – OCTOBER 30 IS PROHIBITED.

SEGMENT 9 – INVASIVE SPECIES

NOTE:
SECTION 9.4 OF THE EM&CP AND APPENDIX N DESCRIBE THE INVASIVE SPECIES MANAGEMENT PLAN FOR THE PROJECT. SECTION 9.4.2 OF THE EM&CP DESCRIBE THE MEASURES TO PREVENT OR CONTROL THE TRANSPORT OF INVASIVE PLANT AND INSECT SPECIES AS WELL AS THE NECESSARY REPORTING REQUIREMENTS TO NYSDEC REGIONAL FORESTER IF THESE SPECIES ARE ENCOUNTERED. THE ENVIRONMENTAL INSPECTOR WILL ENSURE THAT MEASURES TO PREVENT AND CONTROL THE SPREAD OF INVASIVES ARE FOLLOWED AND THAT CONSTRUCTION CREWS ARE EDUCATED IN SAID MEASURES. THE ENVIRONMENTAL INSPECTOR WILL NOTIFY CREWS IF AN UPCOMING WORK AREA REQUIRES SAID MEASURES.

SEGMENT 9 – EM&CP NOISE SENSITIVE AREAS NOTE

NOTE:
1. THE NOISE RECEPTORS THAT OCCUR NEAR SEGMENT 9 AT VARIOUS POINTS INCLUDE RESIDENCES AND BUSINESSES. SECTION 10.2 OF THE EM&CP DESCRIBES THE NOISE CONTROL MEASURES THAT WILL BE EMPLOYED THROUGHOUT THIS PACKAGE.

SEGMENT 9 – EM&CP CULTURAL RESOURCES

TABLE 11–1. SEGMENT 9 CULTURAL RESOURCES			
CULTURAL RESOURCE NAME	LOCATION	IMPACT	PROTECTION MEASURE
VANDERZEE–TRYON HOUSE AND BARNs (00102.000563, 18TH–CENTURY STONE FARMHOUSE AND ASSOCIATED FARM COMPLEX	SOUTHWEST SIDE OF WEST YARD ROAD, PROPERTY FRONTS ON 190 OLD QUARRY ROAD TO THE SOUTHWEST. 51039+00 TO 51059+00	NO DIRECT IMPACTS ARE ANTICIPATED, TEMPORARY EASEMENT ALONG ROAD ROW.	NO ADDITIONAL ARCHEOLOGY OR PROTECTIVE MEASURES RECOMMENDED.
398 SOUTH ALBANY ROAD, 19TH–CENTURY FARM COMPLEX	HDD 88, 51179+90 TO 51194+20 SPLICE 191 AND DEVIATION 59–2, 51196+00 TO 51198+00	BOTH HDD WORK AREAS ARE LOCATED OUTSIDE OF THE PERMITTED ROUTE. CABLE ROUTE AND PARTS OF THE SPLICE’S WORK AREAS ARE OUTSIDE THE PERMITTED ROUTE AND OUTSIDE RAILROAD ROW.	ARCHEOLOGICAL MONITORING OR TESTING FOR WORK AREAS THAT EXTEND OUTSIDE OF PERMITTED ROUTE.
398 SOUTH ALBANY ROAD, 19TH–CENTURY FARM COMPLEX	51176+00 TO 51179+00, AND 51194+00 TO 51200+60	OPEN TRENCH, HDD, AND SPLICE.	DETERMINATION OF ELIGIBILITY FOR FARM COMPLEX FURTHER CONSULTATION WITH NYSHPO.

SEGMENT 9 – NYSDOT COORDINATION

TABLE 12–2 – NYSDOT COORDINATION SUMMARY		
COORDINATING PARTIES	DESCRIPTION	CURRENT STATUS
CERTIFICATE HOLDERS, DPS STAFF, NYSDOT	ALL PLANS AND WORK TO BE PERFORMED IN STATE–OWNED ROW UNDER NYSDOT’S SUPERVISION AND MANAGEMENT.	ONGOING THROUGHOUT
CERTIFICATE HOLDERS, DPS STAFF, NYSDOT STAFF	CERTIFICATE HOLDERS SHALL PROVIDE DPS STAFF AND NYSDOT STAFF WITH A PRELIMINARY DESIGN MARKED TO AVOID CONFLICT WITH POTENTIAL TRANSPORTATION PROJECTS THAT NYSDOT STAFF MAY SEEK TO UNDERTAKE IN THE FUTURE AND SHALL OFFER TO CONSULT WITH NYSDOT STAFF CONCERNING ANY COMMENTS IT MAY OFFER AND SHALL USE REASONABLE EFFORTS TO ACCOMMODATE ANY NYSDOT CONCERNS.	PRIOR TO FILING ANY SEGMENT EM&CP INVOLVING ANY SUCH STATE–OWNED ROW.
CERTIFICATE HOLDERS, NYSDOT, AGENCY CROSSED BY PROJECT	CERTIFICATE HOLDERS WILL CONSULT WITH EACH TRANSPORTATION DEPARTMENT OR AGENCY HAVING JURISDICTION OVER ANY ROADS, RELATED STRUCTURES, AND COMPONENTS THAT WILL BE CROSSED BY THE FACILITY OR USED FOR DIRECT ACCESS TO THE CONSTRUCTION ZONE. IF THE ACCESS ROAD TAKES DIRECT ACCESS FROM, OR LIES WITHIN THE LIMITS OF, SUCH ROADS, THE CERTIFICATE HOLDERS WILL NOTIFY EACH RELEVANT TRANSPORTATION DEPARTMENT OR AGENCY OF THE APPROXIMATE DATE WHEN WORK WILL BEGIN.	DURING PREPARATION OF THE EM&CP AND WHEN WORK BEGINS.
CERTIFICATE HOLDERS, NYSDOT, DPS STAFF, NYSDEC	THE CERTIFICATE HOLDERS WILL PROVIDE STATUS REPORTS SUMMARIZING CONSTRUCTION AND INDICATING CONSTRUCTION ACTIVITIES AND LOCATIONS SCHEDULED FOR THE NEXT MONTH.	BI–WEEKLY.

SEGMENT 9 – ROAD AND HIGHWAY CROSSINGS AND CONSTRUCTION

TABLE 12–3: ROAD AND HIGHWAY CROSSINGS					
MUNICIPALITY	JURISDICTION	ROAD CROSSING	CROSSING METHOD (HDD OR OPEN TRENCH)	SHEET	LOCATION (APPROXIMATE, SEE APPENDIX C DRAWINGS FOR DETAILS)
BETHLEHEM	NYSDOT	INDIAN FIELDS ROAD (NYS ROUTE 32)	TRENCH	C–101	STA 51004
BETHLEHEM	ALBANY COUNTY	SOUTH ALBANY ROAD	TRENCH	C–106	STA 51085
BETHLEHEM	ALBANY COUNTY	SOUTH ALBANY ROAD	HDD 87.B	C–108 TO C–109	STA 51119
BETHLEHEM	NYSDOT	BRIDGE STREET	HDD 90	C–117	STA 51244+50

SEGMENT 9 – ROAD PARALLEL CONSTRUCTION

TABLE 12–4: ROAD PARALLEL CONSTRUCTION			
PARALLEL ROAD CONSTRUCTION	JURISDICTION	SHEET	LOCATION (APPROXIMATE – SEE APPENDIX C FOR DETAILS)
WEST YARD ROAD	TOWN OF BETHLEHEM	C–101 TO C–105	STA 51005 TO 51063
SOUTH ALBANY ROAD	ALBANY COUNTY	C–106 TO C–108	STA 51085 TO 51110
SOUTH ALBANY ROAD	ALBANY COUNTY	C–109 TO C–112	STA 51121 TO STA 51175

SEGMENT 9 – CI COORDINATION

TABLE 13–1 – CO–LOCATED INFRASTRUCTURE CONSULTATION SUMMARY			
UTILITY OWNER	UTILITY TYPE (QUANTITY)	AGREEMENT STATUS/DATE	NOTES
GATEWAY DELMAR	UNDERGROUND GAS (1)	AGREEMENT IN PLACE (10/27/22)	
LUMEN	UNDERGROUND FIBER (2)	NOT APPLICABLE	PER CI OWNER, THEY HAVE NO UTILITIES ALONG THE ROW IN THIS AREA.
NATIONAL GRID	OVERHEAD ELECTRIC DISTRIBUTION (29); OVERHEAD ELECTRIC TRANSMISSION (2)	CONSULTATION ONGOING	ONGOING CONSULTATION/INFORMATION REVIEWS RELATED TO PROPERTY RIGHTS, ELECTRICAL EFFECTS, AND DESIGN. CURRENTLY ANTICIPATE AGREEMENT IN SECOND QUARTER 2023.
TIME WARNER	OVERHEAD FIBER (2); UNDERGROUND FIBER(5); UNDERGROUND TELEPHONE (3)	AGREEMENT EXPECTED PENDING RECEIPT OF UPDATED PLAN/PROFILE THAT REFLECT CI OWNER COMMENTS/REQUIREMENTS	ANTICIPATE RECEIPT OF UPDATED PLAN/PROFILE BY 03/24/23.
VERIZON	UNDERGROUND TELEPHONE (5)	CONSULTATION ONGOING	CI OWNER HAS ACKNOWLEDGED RECEIPT OF CHPE PLANS BUT NOT YET PROVIDED ACTIONABLE FEEDBACK.

SEGMENT 9 – PARALLEL RAILROAD CONSTRUCTION

TABLE 13–3. SEGMENT 9 PARALLEL RAILROAD CONSTRUCTION		
RAILROAD OWNER	SHEET	APPROXIMATE STATION LOCATION (SEE DRAWINGS FOR DETAILS)
CSX RAIL	C–116 TO C–119	STA 51234 TO 51279



FOR INFORMATION, SEE ENVIRONMENTAL MANAGEMENT AND CONSTRUCTION PLAN NARRATIVE.

CHAMPLAIN HUDSON POWER EXPRESS
SEGMENT 9 (PACKAGE 5B) - CSX: SELKIRK RAIL YARD BYPASS
EM&CP TABLES 3 OF 4

KIEWIT PROJECT NO.	21162
DRAWING NO.	G-012
DATE	06/09/2023
SH.NO.	0

DRAWN BY:	DESIGNED BY:	APPROVED BY:	SCALE	AS SHOWN
No.	DATE	SUBMITTAL / REVISION DESCRIPTION	DB	APP

File: P:\KIE-CHPE\3-DES\02-RDW\SHITS\PSB\21162_5B_G-010 - 013.DWG Saved: 6/8/2023 1:27:06 PM Plotted: 6/8/2023 1:36:33 PM Current User: Brian.Vines LastSavedBy: petar.lukacevic

SEGMENT 9 – RESTORATION METHODS AND NOTES

TABLE 14 --- RESTORATION METHODS	
LAND USE DESCRIPTION	SECTION OF EM&CP
CONSTRUCTION MATERIALS AND EQUIPMENT STAGING LOCATIONS AND TEMPORARY ACCESS ROADS	14.2.2
PAVEMENT	14.2.2
RAILWAY BALLAST	14.2.3
RECREATIONAL AREAS	14.2.4
LANDSCAPING	14.3
STREAMS AND WATERBODIES	14.4
ACCESS ROADS AND LAYDOWN AREAS WITHIN AGRICULTURAL LANDS	14.5.1
DRAINAGE FEATURES	14.5.2
GENERAL AGRICULTURAL LANDS	14.5

NOTES:
SECTION 14.0 OF THE EM&CP DESCRIBES THE CLEANUP STANDARDS AND PROCEDURES THAT WILL BE FOLLOWED THROUGHOUT THIS SEGMENT ONCE CONSTRUCTION IS COMPLETE. TABLE 14 SUMMARIZES THE APPROPRIATE SUBSECTION WITH SECTION 14 THAT INCLUDES THE RESTORATION PROCEDURE FOR EACH TYPE OF LAND USE.

SEGMENT 9 – AGRICULTURAL LANDS REQUIRING RESTORATION

TABLE 14--1. AGRICULTURAL LANDS REQUIRING RESTORATION			
AGRICULTURAL LAND DESCRIPTION	PARCEL NUMBER	PLAN AND PROFILE (APPENDIX C) SHEET NUMBER	STATION (APPROXIMATE – SEE APPENDIX C FOR DETAILS)
AGRICULTURAL LAND #6	132.00–2–26	C–112 AND C–113	STA 51177+01 TO 51183+01

SEGMENT 9 – FEMA

NOTE:
FEMA FIRM MAPS ARE PROVIDED IN APPENDIX D OF THE STORMWATER POLLUTION PREVENTION PLAN WHICH IS INCLUDED IN APPENDIX G OF THE EM&CP. SEE EM&CP SECTION 9.1.3 FOR AREAS OF THE ALIGNMENT THAT OVERLAP FEMA FLOODPLAINS AND THE BMP'S REQUIRED IN THOSE LOCATIONS.

SEGMENT 9 – EM&CP EROSION AND SEDIMENT CONTROL NOTES

- NOTES:
- THE STORMWATER POLLUTION PREVENTION PLAN INCLUDED IN APPENDIX G OF THE EM&CP DESCRIBES THE EROSION AND SEDIMENT CONTROLS THAT WILL BE FOLLOWED FOR THIS SEGMENT.
 - THE EROSION AND SEDIMENT CONTROL PLANS CAN BE FOUND ON SHEETS C–400 TO SHEET C–410 FOR THIS SEGMENT.



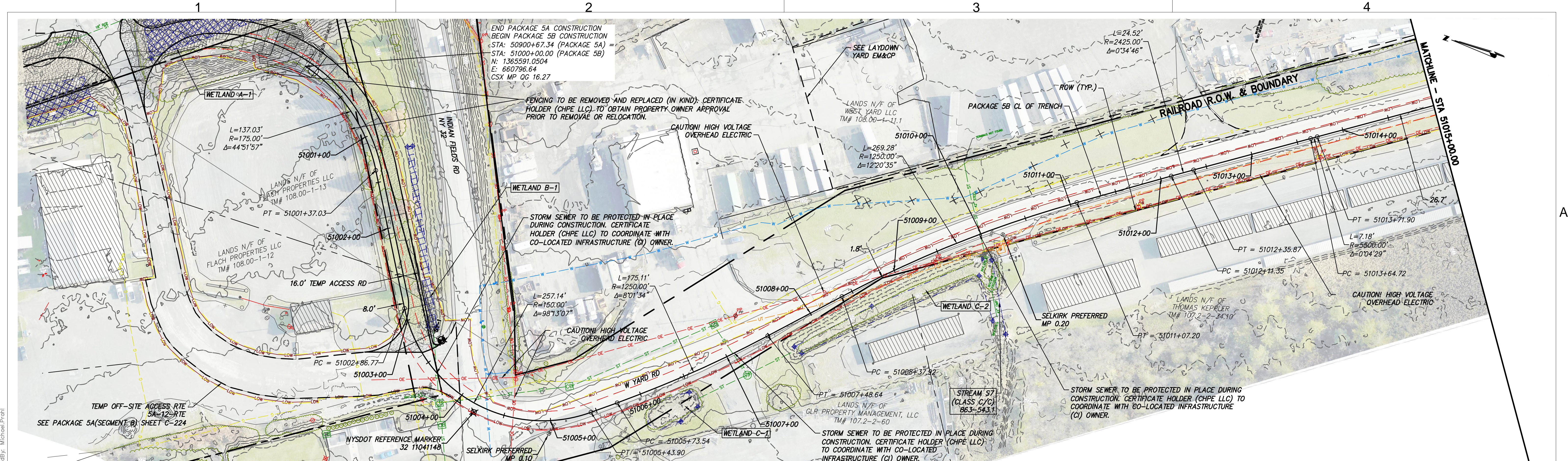
FOR INFORMATION, SEE ENVIRONMENTAL MANAGEMENT AND CONSTRUCTION PLAN NARRATIVE.

0	06/09/2023	ISSUED FOR CONSTRUCTION SUBMISSION			
No.	DATE	SUBMITTAL / REVISION DESCRIPTION	DB	APP	

CHAMPLAIN HUDSON POWER EXPRESS
SEGMENT 9 (PACKAGE 5B) - CSX: SELKIRK RAIL YARD BYPASS
EM&CP TABLES 4 OF 4

KIEWIT PROJECT NO.	21162
DRAWING NO.	G-013
DATE SH.NO.	06/09/2023 0

DRAWN BY:	DESIGNED BY:	APPROVED BY:	SCALE REV. NO.	AS SHOWN 0
-----------	--------------	--------------	----------------	------------



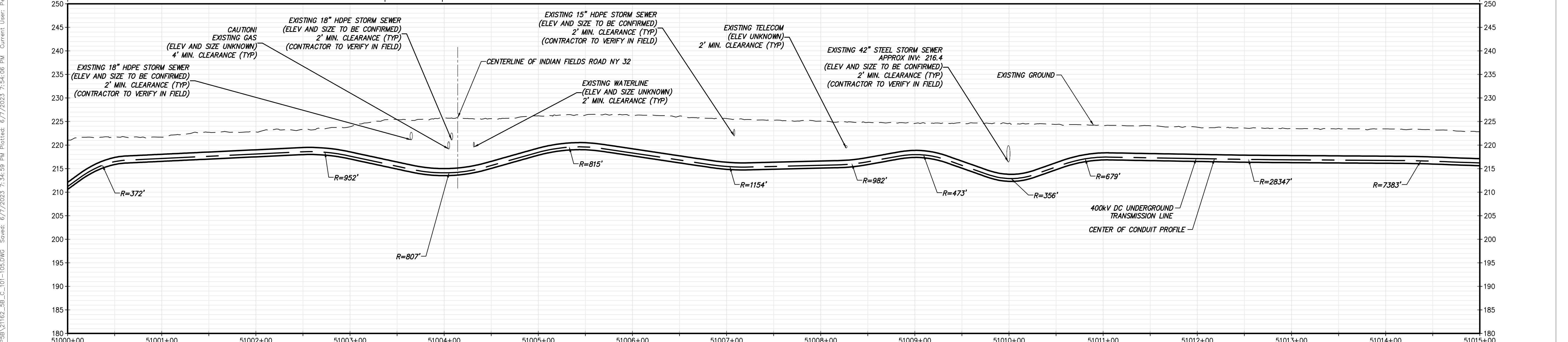
STA. 51000+00.00 TO STA. 51015+00.00 PLAN VIEW
SCALE: 1" = 50'

TRENCH SECTION - TYPICAL
(SEE SHEET C-621, DETAIL 1A)
30" DUCTBANK WIDTH,
16" CONDUIT ϕ TO ϕ ,
TR SECTION (130 K.cm/W)



TRENCH SECTION WITHIN PAVEMENT
(SEE SHEET C-621, DETAIL 3A)
30" DUCTBANK WIDTH,
16" CONDUIT ϕ TO ϕ ,
TR SECTION (130 K.cm/W)


TRENCH SECTION - ROADWAY
(SEE SHEET C-621, DETAIL 2A)
30" DUCTBANK WIDTH,
16" CONDUIT ϕ TO ϕ ,
TR SECTION (130 K.cm/W)

IMPROVEMENTS SHOWN ON THIS SHEET ARE NOT LOCATED WITHIN CSX PROPERTY



STA. 51000+00.00 TO STA. 51015+00.00 PROFILE
SCALE: H: 1" = 50' V: 1" = 10'





IT IS A VIOLATION OF LAW FOR ANY PERSON, UNLESS THEY ARE ACTING UNDER THE DIRECTION OF A LICENSED PROFESSIONAL ENGINEER, ARCHITECT, LANDSCAPE ARCHITECT OR LAND SURVEYOR TO ALTER AN ITEM IN ANY WAY. IF AN ITEM BEARING THE STAMP OF A LICENSED PROFESSIONAL IS ALTERED, THE ALTERING ENGINEER, ARCHITECT, LANDSCAPE ARCHITECT OR LAND SURVEYOR SHALL STAMP THE DOCUMENT AND INCLUDE THE NOTATION "ALTERED BY" FOLLOWED BY THEIR SIGNATURE, THE DATE OF SUCH ALTERATION, AND A SPECIFIC DESCRIPTION OF THE ALTERATION.

No.	DATE	SUBMITTAL / REVISION DESCRIPTION	DB	APP
0	06/09/2023	ISSUED FOR CONSTRUCTION SUBMISSION	BV	TK

CHAMPLAIN HUDSON POWER EXPRESS
SEGMENT 9 (PACKAGE 5B) - CSX: SELKIRK RAIL YARD BYPASS

STA. 51000+00.00 TO STA. 51015+00.00
HVDC CONDUIT PLAN AND PROFILE
(AND TEMPORARY ACCESS ROAD PLAN)

KIEWIT PROJECT NO. 21162	
DRAWING NO. C-101	
DRAWN BY: AR	DESIGNED BY: BV
APPROVED BY: TK	DATE 06/09/2023

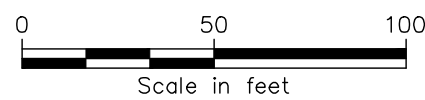
SCALE
REV. NO.

AS SHOWN
DATE
06/09/2023



IMPROVEMENTS SHOWN ON THIS SHEET ARE
NOT LOCATED WITHIN CSX PROPERTY

SCALE: 1" = 50'



TRENCH SECTION - ROADWAY
(SEE SHEET C-621, DETAIL 2A)
30" DUCTBANK WIDTH,
16" CONDUIT \varnothing TO \varnothing
TR SECTION (130 K.cm/W)

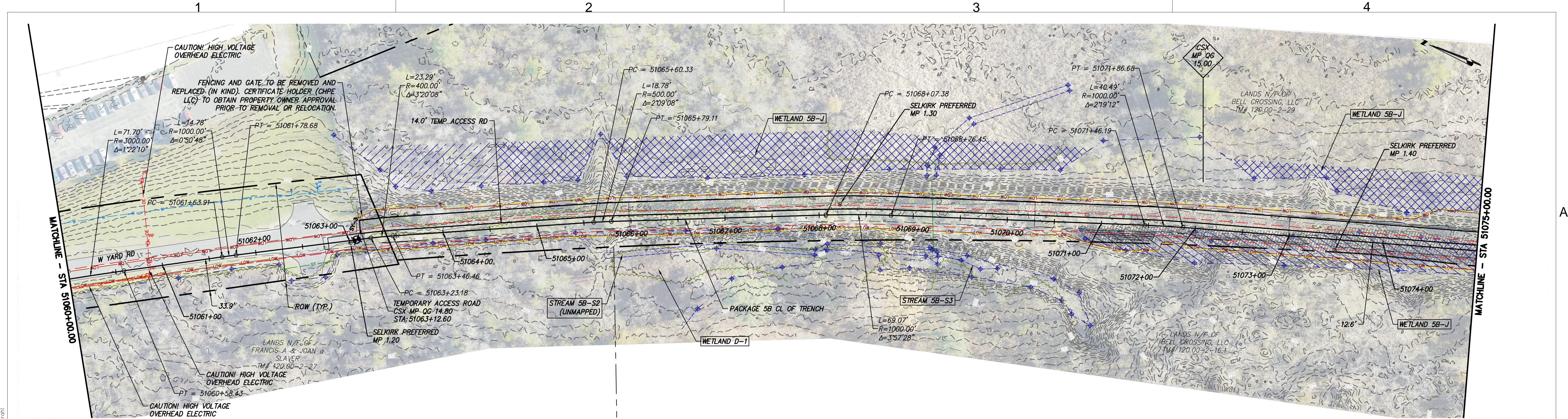


SCALE. H: 1" = 50' V: 1" = 10'



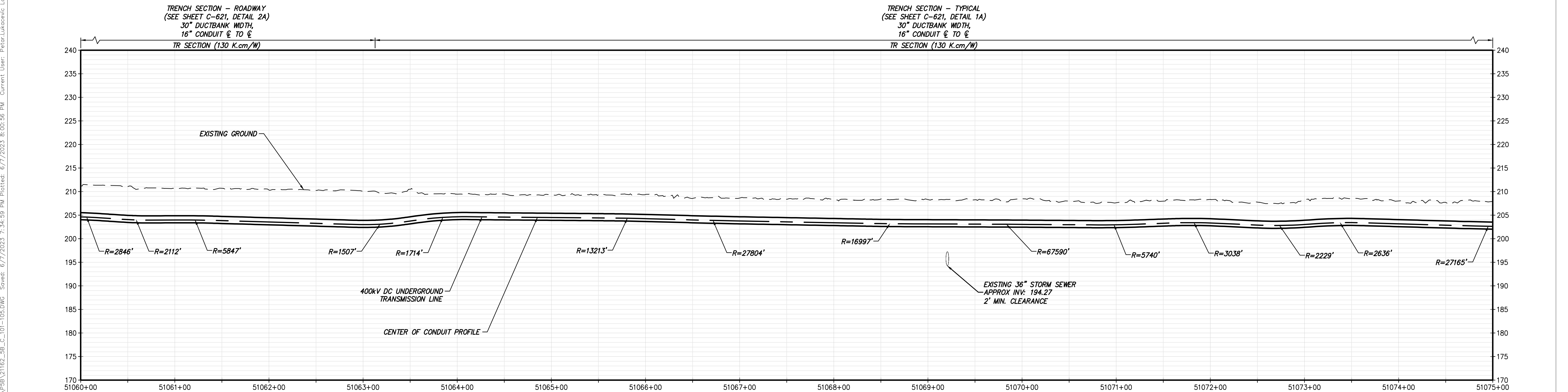
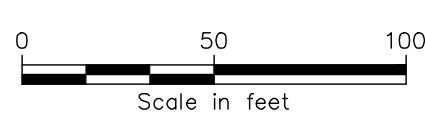
IT IS A VIOLATION OF LAW FOR ANY PERSON, UNLESS THEY ARE ACTING UNDER THE DIRECTION OF A LICENSED PROFESSIONAL ENGINEER, ARCHITECT, LANDSCAPE ARCHITECT OR LAND SURVEYOR TO ALTER AN ITEM IN ANY WAY. IF AN ITEM BEARING THE STAMP OF A LICENSED PROFESSIONAL IS ALTERED, THE ALTERING ENGINEER, ARCHITECT, LANDSCAPE ARCHITECT OR LAND SURVEYOR SHALL STAMP THE DOCUMENT AND INCLUDE THE NOTATION "ALTERED BY" FOLLOWED BY THEIR SIGNATURE, THE DATE OF SUCH ALTERATION, AND A SPECIFIC DESCRIPTION OF THE ALTERATION.

						CHAMPLAIN HUDSON POWER EXPRESS SEGMENT 9 (PACKAGE 5B) - CSX: SELKIRK RAIL YARD BYPASS STA. 51015+00.00 TO STA. 51030+00.00 HVDC CONDUIT PLAN AND PROFILE (AND TEMPORARY ACCESS ROAD PLAN)							KIEWIT PROJECT NO. 21162			
													DRAWING NO.		C-102	
0	06/09/2023	ISSUED FOR CONSTRUCTION SUBMISSION			BV								TK			
No.	DATE	SUBMITTAL / REVISION DESCRIPTION			DB	APP	DRAWN BY:	AR	DESIGNED BY:	BV	APPROVED BY:	TK	SCALE REV. NO.	AS SHOWN 0	DATE SH.NO.	06/09/2023






STA. 51060+00.00 TO STA. 51075+00.00 PLAN VIEW
SCALE: 1" = 50'

IMPROVEMENTS SHOWN ON THIS SHEET ARE NOT LOCATED WITHIN CSX PROPERTY



STA. 51060+00.00 TO STA. 51075+00.00 PROFILE
SCALE: H: 1" = 50' V: 1" = 10'





IT IS A VIOLATION OF LAW FOR ANY PERSON, UNLESS THEY ARE ACTING UNDER THE DIRECTION OF A LICENSED PROFESSIONAL ENGINEER, ARCHITECT, LANDSCAPE ARCHITECT OR LAND SURVEYOR TO ALTER AN ITEM IN ANY WAY. IF AN ITEM BEARING THE STAMP OF A LICENSED PROFESSIONAL IS ALTERED, THE ALTERING ENGINEER, ARCHITECT, LANDSCAPE ARCHITECT OR LAND SURVEYOR SHALL STAMP THE DOCUMENT AND INCLUDE THE NOTATION "ALTERED BY" FOLLOWED BY THEIR SIGNATURE, THE DATE OF SUCH ALTERATION, AND A SPECIFIC DESCRIPTION OF THE ALTERATION.

No.	DATE	SUBMITTAL / REVISION DESCRIPTION	DB	APP
0	06/09/2023	ISSUED FOR CONSTRUCTION SUBMISSION	BV	TK

CHAMPLAIN HUDSON POWER EXPRESS
SEGMENT 9 (PACKAGE 5B) - CSX: SELKIRK RAIL YARD BYPASS
STA. 51060+00.00 TO STA. 51075+00.00
HVDC CONDUIT PLAN AND PROFILE
(AND TEMPORARY ACCESS ROAD PLAN)

DRAWN BY: AR
DESIGNED BY: BV
APPROVED BY: TK

SCALE: AS SHOWN
REV. NO. 0

DATE: 06/09/2023
SH.NO.

KIEWIT PROJECT NO.
21162

DRAWING NO.
C-105