

APPENDIX R
CASE 10-T-0189
DOCUMENTATION OF CI CONSULTATIONS
HAVING OCCURRED

REDACTED

Champlain Hudson Power Express Upland Co-Located Utility Summation Matrix Revision Date: 03/06/2023							
Segment(s)	General Location of Utility		Owner	Utility	Utility		Quality Level (A/B/C/D)
	Station (Starting Point for Parallel and Crossing Point for Perpendicular)	Station (Ending Point for Parallel)			Parallel/ Perpendicular	Description (optional)	
	50000+00	50097+00	AT&T	UG Utility (Telephone)	Parallel	UG Utility telephone line parallel to alignment	D
	50000+00	50008+00	Time Warner	UG Utility (Telephone)	Parallel	Missing Utility lines on the East side of Princetown RD	D
	50000+00	50008+00	Town of Rotterdam Water & Sewer	Storm Drainage Pipe/Culvert	Parallel	Missing Utility lines on the East side of Princetown RD	D
	50000+00	50008+00	Town of Rotterdam Water & Sewer	Water Line	Parallel	Missing Utility lines on the East side of Princetown RD, added 10/28/22	D
	50000+00	50008+00	City of Schenectady Water	Water Line	Parallel	Missing Utility line on the East side of Princetown RD	D
	50000+00	50066+00	AT&T	OH Utility (Fiber)	Parallel	OH utility Fiber on east side of alignment	B
	50000+00	50077+60	AT&T	OH Utility (Fiber)	Parallel	OH utility Fiber on east side of alignment	B
	50000+00	50008+00	National Grid	UG Utility (Electric)	Parallel	Missing Utility lines on the East side of Princetown RD	D
	50000+00	50008+00	National Grid	UG Utility (Gas)	Parallel	Missing Utility line on the East side of Princetown RD	D
	50005+10		National Grid	UG Utility (Electric)	Perpendicular	UG single phase line crosses on HDD Area	D
	50009+21	50009+99	Town of Rotterdam Water & Sewer	Storm Drainage Pipe/Culvert	Parallel	12" CMP, parallel with O/S from 15' to 4.63' O/S off the alignment CL	B
	50009+75		City of Schenectady Water	Water Line	Perpendicular	(2) Water line man holes on east side of alignment	B
	50013+92		Town of Rotterdam Water & Sewer	Storm Drainage Pipe/Culvert	Perpendicular	15' Existing Archway Storm, box culvert	B
	50015+75	50020+82	National Grid	UG Utility (Electric)	Parallel	UG Line from Burden St runs along RR tracks	B
	50018+00		Verizon	UG Utility (Telephone)	Perpendicular	FOC Utility	D
	50018+08	50062+50	AT&T	UG Utility (Fiber)	Parallel	UG Utility fiber	B
	50018+39	50021+20	National Grid	UG Utility (Electric)	Parallel	OH Power on east side of CSX RR ends at Kellar Ave	B

<div> Champlain Hudson Power Express Upland Co-Located Utility Summation Matrix Revision Date: 03/06/2023 </div>							
Segment(s)	General Location of Utility		Owner	Utility	Utility		Quality Level (A/B/C/D)
	Station (Starting Point for Parallel and Crossing Point for Perpendicular)	Station (Ending Point for Parallel)			Parallel/ Perpendicular	Description (optional)	
	50018+39	50020+09	National Grid	UG Utility (Electric)	Parallel	OH Power on east side of CSX RR ends at Kellar Ave	B
	50018+40		National Grid	UG Utility (Electric)	Perpendicular	OH power on Burdeck St crossing the alignment	B
	50018+77	50020+26	National Grid	UG Utility (Electric)	Parallel	OH Power on east side of CSX RR ends at Kellar Ave	B
	50019+16	50020+85	AT&T	UG Utility (Fiber)	Parallel	AT&T utility parallel to alignment	D
	50020+25		AT&T	UG Utility (Fiber)	Perpendicular	Conflict on south conduit	B
	50020+38		CSX RR	UG Utility (Electric)	Perpendicular	Underground Electric (UE)	B
	50020+43		CSX RR	UG Utility (Electric)	Perpendicular	Underground Electric (UE)	D
	50020+49		CSX RR	UG Utility (Electric)	Perpendicular	Underground Electric (UE)	B
	50020+50	50038+70	CSX RR	UG Utility (Electric)	Parallel	Underground Electric (UE)	B
	50020+60		CSX RR	UG Utility (Electric)	Perpendicular	Underground Electric (UE)	B
	50020+63		CSX RR	UG Utility (Electric)	Perpendicular	Underground Electric (UE)	D
	50020+70		AT&T	UG Utility (Fiber)	Perpendicular	Conflict on south conduit	D
	50020+76		CSX RR	UG Utility (Electric)	Perpendicular	(2) Electric pole on east side of alignment	D
	50020+76		CSX RR	UG Utility (Electric)	Perpendicular	Underground Electric (UE)	D
	50020+85		AT&T	UG Utility (Fiber)	Perpendicular	FOC Utility	D
	50020+91		National Grid	OH Utility (Electric)	Perpendicular	Overhead crossing on West side of Burdeck St	B
	50020+91		Verizon	OH Utility (Telephone)	Perpendicular	Overhead crossing on West Northwest side of Burdeck St	B
	50020+97		City of Schenectady Water	Water Line	Perpendicular	Northwest side of Burdeck St.	B

Champlain Hudson Power Express							
Upland Co-Located Utility Summation Matrix							
Revision Date: 03/06/2023							
Segment(s)	General Location of Utility		Owner	Utility	Utility		Quality Level (A/B/C/D)
	Station (Starting Point for Parallel and Crossing Point for Perpendicular)	Station (Ending Point for Parallel)			Parallel/ Perpendicular	Description (optional)	
	50021+01		Verizon	OH Utility (Telephone)	Perpendicular	Conflict on south conduit	B
	50021+01		National Grid	UG Utility (Electric)	Perpendicular	Conflict on south conduit	B
	50021+10		AT&T	UG Utility (Fiber)	Perpendicular	Conflict on south conduit	B
	50021+15		City of Schenectady Water	Water Line	Perpendicular	Conflict on south conduit	B
	50021+25		AT&T	UG Utility (Fiber)	Perpendicular	Conflict on south conduit	B
	50021+25		National Grid	UG Utility (Electric)	Perpendicular	Conflict on south conduit	B
	50021+39		National Grid	UG Utility (Gas)	Perpendicular	Southeast side of Burdeck St	B
	50021+46		Sprint	OH Utility (Fiber)	Perpendicular	UG comm crossing on West side of Burdeck St	D
	50021+48		National Grid	UG Utility (Gas)	Perpendicular	Conflict on south conduit	B
	50021+58		CSX RR	UG Utility (Electric)	Perpendicular	Crossing just Southeast of Burdeck St	B
	50021+62		AT&T	UG Utility (Fiber)	Perpendicular	Crossing just Southast of Burdeck St	B
	50022+52		AT&T	UG Utility (Fiber)	Perpendicular	Crossing just Southast of Burdeck St	B
	50022+85		Sprint	UG Utility (Fiber)	Perpendicular	Crossing just Southast of Burdeck St	B
	50032+38		National Grid	OH Utility (Electric)	Perpendicular	Overhead crossing North of Mariaville Rd	B
	50032+38		National Grid	OH Utility (Electric)	Perpendicular	Electric pole on east side of alignment	B
	50032+40	50041+25	National Grid	OH Utility (Electric)	Parallel	OH electric and poles within 15' O/S from CL, crossing at STA 50039+62	B
	50034+00		National Grid	OH Utility (Electric)	Perpendicular	Electric pole on east side of alignment	B
	50035+17		National Grid	UG Utility (Gas)	Perpendicular	North of Mariaville Rd	B

Champlain Hudson Power Express

Upland Co-Located Utility Summation Matrix

Revision Date: 03/06/2023

Segment(s)	General Location of Utility		Owner	Utility	Utility		Quality Level (A/B/C/D)
	Station (Starting Point for Parallel and Crossing Point for Perpendicular)	Station (Ending Point for Parallel)			Parallel/ Perpendicular	Description (optional)	
	50036+77		National Grid	OH Utility (Electric)	Perpendicular	Pole on east side of alignment	B
	50037+91		National Grid	OH Utility (Electric)	Perpendicular	Pole on east side of alignment	B
	50038+59	50586+00	AT&T	UG Utility (Fiber)	Parallel	Oh electric parallel to alignmnet	B
	50039+06		National Grid	OH Utility (Electric)	Perpendicular	(2) Pole on east side of alignment	B
	50039+71		National Grid	OH Utility (Electric)	Perpendicular	Overhead crossing north of Old Mariaville Rd/Keller Ave	B
	50039+80	50041+25	National Grid	OH Utility (Electric)	Parallel	Oh electric parallel to alignmnet	B
	50040+50		National Grid	OH Utility (Electric)	Perpendicular	Pole on west side of alignment	B
	50041+15		National Grid	OH Utility (Electric)	Perpendicular	(3) Overhead crossing at Old Mariaville Rd/Keller Ave	B
	50041+15		National Grid	OH Utility (Electric)	Perpendicular	(2) Pole on west side of alignment	B
	50041+15		National Grid	OH Utility (Electric)	Perpendicular	Pole on east side of alignment	B
	50041+63		National Grid	OH Utility (Electric)	Perpendicular	Overhead crossing at Old Mariaville Rd/Keller Ave	B
	50041+63		National Grid	OH Utility (Electric)	Perpendicular	Pole on east side of alignment	B
	50044+10		CSX RR	OH Utility (Electric)	Perpendicular	RR Signals, North of SR 159 - Mariaville Rd	D
	50057+00		AT&T	UG Utility (Fiber)	Perpendicular	Crossing and Parallel on West side of RR tracks	D
	50058+85		CSX RR	Storm Drainage Pipe/Culvert	Perpendicular	Storm Sewer Catch Basin	B
	50066+40	50069+00	National Grid	UG Utility (Electric)	Parallel	UG electric parallel to alignment	B
	50067+00		National Grid	OH Utility (Electric)	Perpendicular	Pole is roughly 5ft away from alignment	B
	50067+63		Verizon	OH Utility (Telephone)	Perpendicular	OH Telecommunication Lines	B

Champlain Hudson Power Express

Upland Co-Located Utility Summation Matrix

Revision Date: 03/06/2023

Segment(s)	General Location of Utility		Owner	Utility	Utility		Quality Level (A/B/C/D)
	Station (Starting Point for Parallel and Crossing Point for Perpendicular)	Station (Ending Point for Parallel)			Parallel/ Perpendicular	Description (optional)	
	50067+63		Time Warner	UG Utility (Telephone)	Perpendicular	Underground crossing south side of Duanesburg Rd	B
	50067+63	50089+86	Time Warner	UG Utility (Telephone)	Parallel	Underground crossing south side of Duanesburg Rd	B
	50067+70		National Grid	OH Utility (Electric)	Perpendicular	Overhead crossing south of Duanesburg Rd (9 lines)	B
	50067+70		National Grid	OH Utility (Electric)	Perpendicular	Pole is roughly 5ft away from alignment	B
	50068+70		National Grid	OH Utility (Electric)	Perpendicular	Pole is roughly 6ft away from alignment	B
	50068+85	50074+86	National Grid	UG Utility (Electric)	Parallel	Oh electric parallel to alignment	B
	50069+08		National Grid	UG Utility (Electric)	Perpendicular	2 UG Electric lines	B
	50069+70		National Grid	OH Utility (Electric)	Perpendicular	2 UG Electric lines, Pole between HDD lines	B
	50070+00	50074+42	Private	UG Utility (Sanitary)	Parallel	Golub property sanitary and electric line Manhole near of alignment	B
	50070+00	50071+00	Private	UG Utility (Electric)	Parallel	Golub property sanitary and electric line	B
	50071+13		Private	UG Utility (Electric)	Perpendicular	UG Electric line crossing the alignment	B
	50071+13		Private	UG Utility (Sanitary)	Perpendicular	Sanitary Sewer crossing the alignment	B
	50071+83		Private	UG Utility (Electric)	Perpendicular	UG Electric line crossing the alignment	B
	50072+00		Private	Sanitary Sewer	Perpendicular	Sanitary Sewer crossing the alignment	B
	50072+35		Private	UG Utility (Electric)	Perpendicular	(2) UG Electric line crossing the alignment	B
	50073+26		Private	Storm Sewer	Perpendicular	Sanitary Sewer Manhole on east side of alignment	B
	50074+42		Private	Storm Sewer	Perpendicular	Sanitary Sewer Manhole on east side of alignment	B
	50074+50	50077+00	AT&T	UG Utility (Telephone)	Parallel	UG Utility telephone overlaps the alignment	D

Champlain Hudson Power Express

Upland Co-Located Utility Summation Matrix

Revision Date: 03/06/2023

Segment(s)	General Location of Utility		Owner	Utility	Utility		Quality Level (A/B/C/D)
	Station (Starting Point for Parallel and Crossing Point for Perpendicular)	Station (Ending Point for Parallel)			Parallel/ Perpendicular	Description (optional)	
	50075+05		Town of Rotterdam Water & Sewer	Water Line	Perpendicular	Fire Hydrant on east side of alignment	B
	50075+14		CSX RR	Storm Sewer	Perpendicular	CMP Pipe crossing the alignment	B
	50077+60		Town of Rotterdam Water & Sewer	Water Line	Perpendicular	Fire Hydrant on west side of alignment	B
	50077+79	50084+26	National Grid	UG Utility (Electric)	Parallel	Oh electric parallel to alignment 3' away from CL	B
	50079+42		National Grid	UG Utility (Electric)	Perpendicular	UG Electric line on west side of alignment	B
	50080+32		National Grid	UG Utility (Electric)	Perpendicular	UG Electric line crossing the alignment	B
	50081+50	50085+10	National Grid	UG Utility (Electric)	Parallel	Oh electric parallel to alignment 3' away from CL	B
	50085+10		National Grid	UG Utility (Electric)	Perpendicular	UG Electric line on west side of alignment	B
	50089+86	50096+50	Time Warner	UG Utility (Telephone)	Parallel	Underground utility electric parallel to alignment	B
	50089+90	50215+00	Time Warner	UG Utility (Telephone)	Parallel	Underground utility electric parallel to alignment	B
	50091+50	50094+07	National Grid	UG Utility (Electric)	Parallel	Oh electric parallel to alignment 3' away from CL	B
	50102+21		Dominion	UG Utility (Fiber)	Perpendicular	North of NYS Thruway (I-90). Conflict at north and south conduits.	B
	50102+34		National Grid	OH Utility (Electric)	Perpendicular	Electric Pole on east side of alignment	B
	50102+67		National Grid	OH Utility (Electric)	Perpendicular	OH Electric line crossing the alignment	B
	50102+67		Telergy	OH Utility (Fiber)	Perpendicular	OH Fiber Crossing the alignment	D
	50102+93		Dominion / Eastern Gas	UG Utility (Gas Transmission)	Perpendicular	North of NYS Thruway (I-90)	B
	50103+00		Dominion	UG Utility (Gas)	Perpendicular	North of NYS Thruway (I-90)	D
	50103+42		National Grid	OH Utility (Electric)	Perpendicular	North of NYS Thruway (I-90). Conflict at north and south conduits.	B

Champlain Hudson Power Express

Upland Co-Located Utility Summation Matrix

Revision Date: 03/06/2023

Segment(s)	General Location of Utility		Owner	Utility	Utility		Quality Level (A/B/C/D)
	Station (Starting Point for Parallel and Crossing Point for Perpendicular)	Station (Ending Point for Parallel)			Parallel/ Perpendicular	Description (optional)	
	50103+76		Telergy	UG Utility (Fiber)	Perpendicular	North of NYS Thruway (I-90). Conflict at north and south conduits.	B
	50104+00		Elantic Telecom	UG Utility (Fiber)	Perpendicular	North of NYS Thruway (I-90)	D
	50110+69		CSX RR	Storm Drainage Pipe/Culvert	Perpendicular	CMP	B
	50110+69		CSX RR	Storm Drainage Pipe/Culvert	Perpendicular	CMP	B
	50110+71		CSX RR	Storm Drainage Pipe/Culvert	Perpendicular	RCP	B
	50115+55		Elantic Telecom	UG Utility (Fiber)	Perpendicular	Elantic Telecom	B
	50118+61		NYS Thruway	UG Utility (Fiber)	Perpendicular	NYS Thruway Fiber Optic	B
	50119+80		Elantic Telecom	UG Utility (Fiber)	Perpendicular	North of NYS Thruway (I-90)	D
	50125+62		CSX RR	Storm Drainage Pipe/Culvert	Perpendicular	RCP	B
	50150+35		National Grid	OH Utility (Electric)	Perpendicular	Overhead Power lines	B
	50150+38		CSX RR	UG Utility (Fiber)	Perpendicular	Underground Fiber crossing RR tracks	B
	50150+41		Town of Rotterdam Water & Sewer	Water Line	Perpendicular	Water line near of alignment	B
	50150+56		National Grid	UG Utility (Gas)	Perpendicular	UG Gas line near of alignment	B
	50160+51		CSX RR	Storm Drainage Pipe/Culvert	Perpendicular	CMP, RCP	B
	50166+20				Perpendicular	PVC Conduit	B
	50170+02		CSX RR	Storm Drainage Pipe/Culvert	Perpendicular	CMP, CMP	B
	50175+82		CSX RR	Storm Drainage Pipe/Culvert	Perpendicular	CMP, CMP	B
	50189+08		CSX RR	Storm Drainage Pipe/Culvert	Perpendicular	Concrete pipe crossing the alignment	B

Champlain Hudson Power Express

Upland Co-Located Utility Summation Matrix

Revision Date: 03/06/2023

Segment(s)	General Location of Utility		Owner	Utility	Utility		Quality Level (A/B/C/D)
	Station (Starting Point for Parallel and Crossing Point for Perpendicular)	Station (Ending Point for Parallel)			Parallel/ Perpendicular	Description (optional)	
	50194+00	50587+00	Sprint	UG Utility (Fiber)	Parallel	UG Fiber Optic parallel to alignment	D
	50194+60	50215+00	CSX RR	UG Utility (Electric)	Parallel	Starts at County Line Rd	B
	50195+08		National Grid	OH Utility (Electric)	Perpendicular	Overhead - North of County Line Rd	B
	50195+08	50195+50	CSX RR	OH (Telephone)	Parallel	OH Utility Telephone parallel to alignment	B
	50195+18		Town of Rotterdam Water & Sewer	Water Line	Perpendicular	North of County Line Rd	B
	50195+50	50215+00	CSX RR	OH Utility (Fiber)	Parallel	OH Utility Fiber parallel to the alignment	B
	50196+80	50214+00	Sprint	UG Utility (Fiber)	Parallel	UG Fiber Optic parallel to alignment	D
	50197+90		CSX RR	Storm Drainage Pipe/Culvert	Perpendicular	Steel	B
	50199+50		CSX RR	OH Utility (Fiber)	Perpendicular	OH Utility Fiber Box on west side of alignment	B
	50204+28		CSX RR	Storm Drainage Pipe/Culvert	Perpendicular	CMP	B
	50204+90		CSX RR	OH Utility (Fiber)	Perpendicular	OH Utility Fiber Box on west side of alignment	B
	50211+86		CSX RR	Storm Drainage Pipe/Culvert	Perpendicular	CMP, RCP	B
	50215+00	50350+50	Time Warner	UG Utility (Telephone)	Parallel	Underground utility Telephone parallel to alignment	B
	50219+18		CSX RR	Storm Drainage Pipe/Culvert	Perpendicular	Steel	B
	50225+29		CSX RR	Storm Drainage Pipe/Culvert	Perpendicular	RCP, CMP	B
	50225+33				Perpendicular	PVC Conduit	B
	50226+20		CSX RR	OH Utility (Fiber)	Perpendicular	OH Utility Fiber Box on west side of alignment	B
	50230+57		CSX RR	Storm Drainage Pipe/Culvert	Perpendicular	CMP, RCP	B

Champlain Hudson Power Express

Upland Co-Located Utility Summation Matrix

Revision Date: 03/06/2023

Segment(s)	General Location of Utility		Owner	Utility	Utility		Quality Level (A/B/C/D)
	Station (Starting Point for Parallel and Crossing Point for Perpendicular)	Station (Ending Point for Parallel)			Parallel/ Perpendicular	Description (optional)	
	50251+19		CSX RR	Storm Drainage Pipe/Culvert	Perpendicular	RCP Pipe on west side of alignment	B
	50255+75		CSX RR	Storm Drainage Pipe/Culvert	Perpendicular	Buried Pipe	B
	50270+49		CSX RR	Storm Drainage Pipe/Culvert	Perpendicular	Stone Box	B
	50273+59		CSX RR	Storm Drainage Pipe/Culvert	Perpendicular	Unknown Size	B
	50282+32		CSX RR	Storm Drainage Pipe/Culvert	Perpendicular	VCP, CMP Pipes on west side of alignment	B
	50294+12		CSX RR	Storm Drainage Pipe/Culvert	Perpendicular	Steel	B
	50297+00		CSX RR	Storm Drainage Pipe/Culvert	Perpendicular	CMP	B
	50302+25		Sprint	UG Utility (Fiber)	Perpendicular	Crosses Parallel Fiber at this location - North of Western TPKE	B
	50304+00	50306+70	CSX RR	OH Utility (Fiber)	Parallel	OH Utility above access road	B
	50307+70		Town of Guilderland	Water Line	Perpendicular	Just north of Western TKPE - service line to large buildin	B
	50309+09		NYSDOT	Storm Sewer	Perpendicular	North side of Western TKPE	B
	50309+40		NYSDOT	Storm Sewer	Perpendicular	South Side of Western TKPE	B
	50309+50		CSX RR	OH Utility (Fiber)	Perpendicular	North of Western TKPE	B
	50309+65		National Grid	OH Utility (Electric)	Perpendicular	North of Western TKPE	B
	50309+65		Time Warner	UG Utility (Telephone)	Perpendicular	North of Western TKPE	B
	50309+70		Time Warner	UG Utility (Telephone)	Perpendicular	South of Western TKPE	B
	50309+70		National Grid	UG Utility (Electric)	Perpendicular	South of Western TKPE	B
	50322+50		CSX RR	Storm Drainage Pipe/Culvert	Perpendicular	Culvert near marsh. 20-30 ft cover.	D

Champlain Hudson Power Express

Upland Co-Located Utility Summation Matrix

Revision Date: 03/06/2023

Segment(s)	General Location of Utility		Owner	Utility	Utility		Quality Level (A/B/C/D)
	Station (Starting Point for Parallel and Crossing Point for Perpendicular)	Station (Ending Point for Parallel)			Parallel/ Perpendicular	Description (optional)	
Segment 8 (Package 5A)	50336+00		CSX RR	OH Utility (Fiber)	Perpendicular	(2) OH Utility crossing access road	B
	50350+50	50587+00	Time Warner	UG Utility (Telephone)	Parallel	Underground utility electric parallel to alignment	B
	50365+00		CSX RR	Storm Drainage Pipe/Culvert	Perpendicular	Manhole on east side of alignment	D
	50368+15	50394+20	CSX RR	Sanitary Sewer	Perpendicular	Sanitary Sewer parallel to alignment	B
	50368+74		CSX RR	Storm Drainage Pipe/Culvert	Perpendicular	RCP Culvert pipe on west side of alignment	B
	50394+94		Town of Guilderland	Water Line	Perpendicular	South of Route 146	B
	50394+95		National Grid	UG Utility (Gas)	Perpendicular	South of SR 146, could be Premier Gas	C
	50395+37		Town of Guilderland	Water Line	Perpendicular	South of Route 146	B
	50395+50		National Grid	OH Utility (Electric)	Perpendicular	Overhead Trifasic - south of Route 146	B
	50395+66		Time Warner	OH Utility (Telephone)	Perpendicular	Overhead comm lines on the same pole than Electric lines	D
	50398+15		National Grid	OH Utility (Electric)	Perpendicular	Pole	B
	50398+21	50405+11	Town of Guilderland	Water Line	Parallel	Fire hydrants and water line, IN CONFLICT, within 5' O/S	D
	50399+17		National Grid	OH Utility (Electric)	Perpendicular	Light pole line, close to fire hydrant	D
	50400+40	50405+11	National Grid	OH Utility (Electric)	Parallel	Secondary OH Electric line, might have a comms component	D
	50401+15	50405+11	CSX RR	Storm Drainage Pipe/Culvert	Parallel	Inlets on the west side of the service road	D
	50401+35		CSX RR	Storm Drainage Pipe/Culvert	Perpendicular	Storm Sewer Catch Basin	B
	50401+37		National Grid	OH Utility (Electric)	Perpendicular	Pole on east side of alignment	B
	50405+22		CSX RR	Storm Sewer	Perpendicular	Catch Basin and storm sewer	B

Champlain Hudson Power Express

Upland Co-Located Utility Summation Matrix

Revision Date: 03/06/2023

Segment(s)	General Location of Utility		Owner	Utility	Utility		Quality Level (A/B/C/D)
	Station (Starting Point for Parallel and Crossing Point for Perpendicular)	Station (Ending Point for Parallel)			Parallel/ Perpendicular	Description (optional)	
	50405+22		CSX RR	UG Utility (Electric)	Perpendicular	UG Utility electric on east side of alignment	B
	50405+70		Town of Guilderland	Water Line	Perpendicular	Water line on east side of alignment	B
	50406+80		Town of Guilderland	Water Line	Perpendicular	Fire hydrants and water line, IN CONFLICT, within 5' O/S	B
	50407+25		Town of Guilderland	Water Line	Perpendicular	Water line on east side of alignment	B
	50407+25		Town of Guilderland	Water Line	Perpendicular	Water line on east side of alignment	B
	50407+36		National Grid	UG Utility (Electric)	Perpendicular	UG Electric on east side of the alignment	B
	50411+27		CSX RR	Storm Drainage Pipe/Culvert	Perpendicular	RCP pipe on west side of the alignment	B
	50413+73		CSX RR	Storm Sewer	Perpendicular	Storm Drainage on east side of alignment	B
	50419+72		CSX RR	Storm Sewer	Perpendicular	(2) Storm MH near of the alignment in both sides	B
	50419+72		Town of Guilderland	Water Line	Perpendicular	Manhole on east side of alignment	B
	50419+72		National Grid	UG Utility (Electric)	Perpendicular	UG Electric on east side of the alignment	B
	50420+29		CSX RR	Storm Sewer	Perpendicular	Storm MH near of the alignment	B
	50421+00	50423+74	Town of Guilderland	Water Line	Parallel	Water line parallel to alignment on east side	B
	50422+41		Town of Guilderland	Water Line	Perpendicular	Water line crossing the alignment	B
	50423+25		CSX RR	Storm Sewer	Perpendicular	Storm MH near of the alignment	B
	50425+00		CSX RR	Storm Sewer	Perpendicular	CMP pipe on west side of alignment	B
	50426+10		National Grid	OH Utility (Electric)	Perpendicular	Pole on west side of alignment	B
	50426+35		CSX RR	Storm Sewer	Perpendicular	Catch Basin and Steel storm sewer crossing alignment	B

Champlain Hudson Power Express

Upland Co-Located Utility Summation Matrix

Revision Date: 03/06/2023

Segment(s)	General Location of Utility		Owner	Utility	Utility		Quality Level (A/B/C/D)
	Station (Starting Point for Parallel and Crossing Point for Perpendicular)	Station (Ending Point for Parallel)			Parallel/ Perpendicular	Description (optional)	
	50427+48		CSX RR	Storm Sewer	Perpendicular	Catch Basin and Steel storm sewer crossing alignment	B
	50429+10		CSX RR	Storm Sewer	Perpendicular	Catch Basin and Steel storm sewer crossing alignment	B
	50431+10		CSX RR	Storm Sewer	Perpendicular	CMP pipe on west side of alignment	B
	50433+90		CSX RR	Storm Sewer	Perpendicular	RCP Culvert with Concrete headwalls on the west side of the alignment	B
	50435+40		CSX RR	Storm Sewer	Perpendicular	CPP pipe on west side of alignment	B
	50438+28		CSX RR	Storm Sewer	Perpendicular	CPP pipe on west side of alignment	B
	50441+43		CSX RR	Storm Sewer	Perpendicular	CPP pipe on west side of alignment	B
	50446+54		CSX RR	Storm Sewer	Perpendicular	CPP pipe on west side of alignment	B
	50454+20		CSX RR	Storm Sewer	Perpendicular	CMP pipe on west side of alignment	B
	50457+36		CSX RR	Storm Drainage Pipe/Culvert	Perpendicular	PVC pipe crossing the alignment	B
	50470+60		Town of Guilderland	Water Line	Perpendicular	Fire Hydrant on east side of alignment	B
	50472+50		Town of Guilderland	Water Line	Perpendicular	Water line on east side of alignment	B
	50475+00		National Grid	OH Utility (Electric)	Perpendicular	Pole on west side of alignment	B
	50476+68		CSX RR	Storm Drainage Pipe/Culvert	Perpendicular	CMP Pipe on west side of alignment	B
	50484+80		CSX RR	Storm Drainage Pipe/Culvert	Perpendicular	RCP Pipe on east side of alignment	B
	50488+78		CSX RR	Storm Drainage Pipe/Culvert	Perpendicular	HDPE, CMP on east side of alignment	B
	50501+00	50502+50	CSX RR	Storm Drainage Pipe/Culvert	Parallel	CMP Culvert parallel to alignment	B
	50502+40		Time Warner	OH Utility (Fiber)	Perpendicular	2 Telecommunication lines at Electric Pole	B

Champlain Hudson Power Express

Upland Co-Located Utility Summation Matrix

Revision Date: 03/06/2023

Segment(s)	General Location of Utility		Owner	Utility	Utility		Quality Level (A/B/C/D)
	Station (Starting Point for Parallel and Crossing Point for Perpendicular)	Station (Ending Point for Parallel)			Parallel/ Perpendicular	Description (optional)	
	50502+40		CSX RR	UG Utility (Electric)	Perpendicular	RR Signals	B
	50502+68		CSX RR	OH Utility (Electric)	Perpendicular	3 Overhead lines - south of Stone Rd	B
	50524+00		CSX RR	Storm Drainage Pipe/Culvert	Perpendicular	RCP	B
	50536+15		CSX RR	Storm Drainage Pipe/Culvert	Perpendicular	PVC Conduit	B
	50544+61		Dominion / Eastern Gas	UG Utility (Gas Transmission)	Perpendicular	UG Transmission Line	B
	50566+97		CSX RR	Storm Drainage Pipe/Culvert	Perpendicular	Concrete Box	B
	50567+65	50572+55	National Grid	UG Utility (Electric)	Parallel	UG Utility Electric on west side of the alignment	B
	50570+25		National Grid	UG Utility (Electric)	Perpendicular	Underground Power with manhole	B
	50573+47	50577+34	National Grid	OH Utility (Electric)	Parallel	OH llines running along Foundry Rd	B
	50574+75		Town of Guilderland	Water Line	Perpendicular	Fire Hydrant on east side of alignment	B
	50575+47		CSX RR	UG Utility (Electric)	Perpendicular	Pole on east side of the alignment	B
	50575+50		CSX RR	UG Utility (Electric)	Perpendicular	Underground Power - Switch/Signal Controls for RR	B
	50577+00		CSX RR	UG Utility (Electric)	Perpendicular	Pole on east side of the alignment	B
	50577+00		Dominion / Eastern Gas	UG Utility (Gas)	Perpendicular	Gas Mark on east side of the alignment	B
	50578+28		CSX RR	UG Utility (Electric)	Perpendicular	UG Utility Electric on west side of the alignment	B
	50578+65		CSX RR	UG Utility (Electric)	Perpendicular	Pole on east side of the alignment	B
	50578+65		Town of Guilderland	Water Line	Perpendicular	Fire Hydrant on east side of alignment	B
	50580+00		CSX RR	UG Utility (Electric)	Perpendicular	Pole on east side of the alignment	B

<div> Champlain Hudson Power Express Upland Co-Located Utility Summation Matrix Revision Date: 03/06/2023 </div>							
Segment(s)	General Location of Utility		Owner	Utility	Utility		Quality Level (A/B/C/D)
	Station (Starting Point for Parallel and Crossing Point for Perpendicular)	Station (Ending Point for Parallel)			Parallel/ Perpendicular	Description (optional)	
	50581+10		CSX RR	Storm Drainage Pipe/Culvert	Perpendicular	Concrete Box	B
	50581+10		CSX RR	Storm Drainage Pipe/Culvert	Perpendicular	HDPE Culvert on east side of alignment	B
	50581+40		CSX RR	UG Utility (Electric)	Perpendicular	Pole on east side of the alignment	B
	50581+75		Verizon	UG Utility (Telephone)	Perpendicular	UG Telephone crossing the alignment	B
	50582+50		CSX RR	UG Utility (Electric)	Perpendicular	Pole on east side of the alignment	B
	50583+50		CSX RR	UG Utility (Electric)	Perpendicular	Pole on east side of the alignment	B
	50584+27		CSX RR	UG Utility (Electric)	Perpendicular	Underground Fiber - RR Controls. Conflict with both conduits.	B
	50584+27		AT&T	UG Utility (Fiber)	Perpendicular	Underground Utility Electric crossing the alignment	B
	50584+35		AT&T	UG Utility (Fiber)	Perpendicular	Fiber Box on west side of alignment	B
	50584+60		Verizon	UG Utility (Telephone)	Perpendicular	Underground telecommunications. Conflict with both conduits.	D
	50584+60		CSX RR	OH Utility (Electric)	Perpendicular	Overhead electric power (3 lines). Conflict with both conduits.	B
	50584+60		CSX RR	OH Utility (Electric)	Perpendicular	Pole on east side of the alignment	B
	50584+75		Villlage of Voorheesville	Water Line	Perpendicular	North side of S Main St and then to Grove St. Conflict with both conduits.	B
	50585+00	50585+25	CSX RR	UG Utility (Electric)	Parallel	UG Electric parallel to alignment	B
	50585+16		CSX RR	UG Utility (Electric)	Perpendicular	Electric pole on west side of alignment	B
	50586+55		Sprint	UG Utility (Fiber)	Perpendicular	UG Utility Fiber Crossing the alignment	B
	50587+00	50869+00	AT&T	UG Utility (Telephone)	Parallel	UG Utility Telephone parallel to alignment	B
	50596+33		National Grid	UG Utility (Gas)	Perpendicular	8" National Grid Gas Main - Voorheesville Ave	B

Champlain Hudson Power Express							
Upland Co-Located Utility Summation Matrix							
Revision Date: 03/06/2023							
Segment(s)	General Location of Utility		Owner	Utility	Utility		Quality Level (A/B/C/D)
	Station (Starting Point for Parallel and Crossing Point for Perpendicular)	Station (Ending Point for Parallel)			Parallel/ Perpendicular	Description (optional)	
	50596+40		National Grid	OH Utility (Electric)	Perpendicular	Overhead Power-South side of Voorheesville Ave	B
	50596+44		Village of Voorheesville	Water Line	Perpendicular		B
	50596+69		Time Warner	UG Utility (Telephone)	Perpendicular	South side of Voorheesville Ave	B
	50596+69		CSX RR	OH Utility (Electric)	Perpendicular	Underground Power - Switch/Signal Controls for RR-OVERHEAD	B
	50597+23		CSX RR	OH Utility (Electric)	Perpendicular	Pole on east side of the alignment	B
	50597+23	50599+60	CSX RR	UG Utility (Electric)	Parallel	UG Fiber runs N-S on the east side of the alignment, from 2' to 15' off CL	B
	50608+10		National Grid	OH Utility (Electric)	Perpendicular	UG Utility electric pole on east side of alignment	B
	50608+50		National Grid	OH Utility (Electric)	Perpendicular	UG Utility electric on east side of alignment	B
	50608+57		Village of Voorheesville	Storm Sewer	Perpendicular	South side of Maple Ave	B
	50608+82		Village of Voorheesville	Water Line	Perpendicular	North side of Maple Ave	B
	50609+05		Village of Voorheesville	Storm Sewer	Perpendicular	South side of Maple Ave	B
	50609+10		National Grid	UG Utility (Gas)	Perpendicular	South side of Maple Ave	B
	50609+15		National Grid	OH Utility (Electric)	Perpendicular	South side of Maple Ave	B
	50609+21	50609+60	National Grid	OH Utility (Electric)	Parallel	Line runs along east side of CSX RR from Maple Rd	B
	50610+18		National Grid	OH Utility (Electric)	Perpendicular	Pole on east side of the alignment	B
	50616+04		National Grid	OH Utility (Electric)	Perpendicular	Pole on west side of the alignment	B
	50665+32		CSX RR	Storm Drainage Pipe/Culvert	Perpendicular	RCP Culvert on east side of alignment	B
	50666+86		CSX RR	Storm Drainage Pipe/Culvert	Perpendicular	RCP Culvert on east side of alignment	B

<div> Champlain Hudson Power Express Upland Co-Located Utility Summation Matrix Revision Date: 03/06/2023 </div>							
Segment(s)	General Location of Utility		Owner	Utility	Utility		Quality Level (A/B/C/D)
	Station (Starting Point for Parallel and Crossing Point for Perpendicular)	Station (Ending Point for Parallel)			Parallel/ Perpendicular	Description (optional)	
	50667+00		CSX RR	Storm Drainage Pipe/Culvert	Perpendicular	RCP Culvert crossing the alignment	B
	50667+40		National Grid	OH Utility (Electric)	Perpendicular	OH utility runs at Youmans Rd	B
	50677+22		CSX RR	Storm Drainage Pipe/Culvert	Perpendicular	CMP	B
	50689+28		CSX RR	Storm Drainage Pipe/Culvert	Perpendicular	Concrete Box	B
	50691+60		National Grid	OH Utility (Electric)	Perpendicular	Overhead - North of New Scotland Rd	B
	50691+60		National Grid	OH Utility (Electric)	Perpendicular	Pole on west side of the alignment	B
	50691+60		Time Warner	UG Utility (Telephone)	Perpendicular	Underground - North of New Scotland Rd	B
	50692+27		Town of Bethlehem	Water Line	Perpendicular	North side of New Scotland Rd.	B
	50692+80		Town of Bethlehem	Water Line	Perpendicular	South of New Scotland Rd.	D
	50692+84		Town of Bethlehem	Water Line	Perpendicular	South of New Scotland Rd.	D
	50697+10		CSX RR	UG Utility (Electric)	Perpendicular	Pole on west side of the alignment	B
	50697+15		CSX RR	UG Utility (Electric)	Perpendicular	Pole on west side of the alignment	B
	50701+50		CSX RR	UG Utility (Electric)	Perpendicular	Pole on west side of the alignment	B
	50717+67		CSX RR	Storm Drainage Pipe/Culvert	Perpendicular	Wood Box	B
	50725+50		CSX RR	UG Utility (Electric)	Perpendicular	Underground Power - Switch/Signal Controls for RR	B
	50727+20	50730+73	CSX RR	UG Utility (Electric)	Parallel	Utilities poles within 15' O/S off CL	B
	50727+50		CSX RR	UG Utility (Electric)	Perpendicular	Underground Power - Switch/Signal Controls for RR	B
	50729+00		CSX RR	UG Utility (Fiber)	Perpendicular	Underground Fiber - RR Controls	B

Champlain Hudson Power Express

Upland Co-Located Utility Summation Matrix

Revision Date: 03/06/2023

Segment(s)	General Location of Utility		Owner	Utility	Utility		Quality Level (A/B/C/D)
	Station (Starting Point for Parallel and Crossing Point for Perpendicular)	Station (Ending Point for Parallel)			Parallel/ Perpendicular	Description (optional)	
	50729+00		CSX RR	UG Utility (Electric)	Perpendicular	Underground Power - Switch/Signal Controls for RR	B
	50729+00	50730+73	CSX RR	UG Utility (Electric)	Parallel	Utilities poles within 15' O/S off CL	B
	50729+15		CSX RR	UG Utility (Electric)	Perpendicular	Underground electric crossing the alignment	B
	50729+20	50730+73	CSX RR	UG Utility (Electric)	Parallel	Utilities poles within 15' O/S off CL	B
	50730+73	50731+26	CSX RR	UG Utility (Electric)	Parallel	Utilities poles within 15' O/S off CL	B
	50730+73	50731+30	CSX RR	UG Utility (Electric)	Parallel	Utilities poles within 15' O/S off CL	B
	50730+73	50731+70	CSX RR	UG Utility (Electric)	Parallel	Utilities poles within 15' O/S off CL	B
	50731+10		National Grid	OH Utility (Electric)	Perpendicular	(2) Utilities poles within 15' O/S off CL	B
	50731+61		National Grid	OH Utility (Electric)	Perpendicular	UG Utility electric line crossing the alignment	B
	50732+45		CSX RR	Storm Drainage Pipe/Culvert	Perpendicular	CMP Pipe on west side of alignment	B
	50732+60		CSX RR	Storm Drainage Pipe/Culvert	Perpendicular	Concrete Box	B
	50732+70		National Grid	OH Utility (Electric)	Perpendicular	Utilities poles within 15' O/S off CL	B
	50733+76		National Grid	OH Utility (Electric)	Perpendicular	Utilities poles within 15' O/S off CL	B
	50734+66		National Grid	OH Utility (Electric)	Perpendicular	Utilities poles within 15' O/S off CL	B
	50736+14		National Grid	OH Utility (Electric)	Perpendicular	Utilities poles within 15' O/S off CL	B
	50738+45		National Grid	OH Utility (Electric)	Perpendicular	Utilities poles within 15' O/S off CL	B
	50740+44		National Grid	OH Utility (Electric)	Perpendicular	Utilities poles within 15' O/S off CL	B
	50746+45		CSX RR	Storm Drainage Pipe/Culvert	Perpendicular	RCP Culvert on east side of the alignment	B

Champlain Hudson Power Express

Upland Co-Located Utility Summation Matrix

Revision Date: 03/06/2023

Segment(s)	General Location of Utility		Owner	Utility	Utility		Quality Level (A/B/C/D)
	Station (Starting Point for Parallel and Crossing Point for Perpendicular)	Station (Ending Point for Parallel)			Parallel/ Perpendicular	Description (optional)	
	50751+90	50756+90	Unknown	UG Utility (Telephone)	Parallel		
	50758+20	50758+45	CSX RR	Storm Drainage Pipe/Culvert	Parallel	CMP Pipe Parallel to alignment	B
	50775+00		CSX RR	UG Utility (Electric)	Perpendicular	Underground Power - Switch/Signal Controls for RR	B
	50779+00		National Grid	OH Utility (Electric)	Perpendicular	Pole on east side of the alignment	B
	50779+72		National Grid	OH Utility (Electric)	Perpendicular	Pole on east side of the alignment	B
	50779+72		National Grid	OH Utility (Electric)	Perpendicular	Overhead - North of Game Farm Rd	B
	50781+73		CSX RR	Storm Drainage Pipe/Culvert	Perpendicular	RCP - South of Game Farm Rd	B
	50787+56	50792+15	National Grid	OH Utility (Transmission)	Perpendicular	(12) Overhead High Voltage powerlines Sta 50786+00 - Sta 50792+15	B
	50792+20		Dominion Telecom	UG Utility (Fiber)	Perpendicular	Between Game Farm Rd and Delaware TPKE	B
	50800+89		National Grid	OH Utility (Electric)	Perpendicular	Overhead High Voltage powerlines (3)	B
	50810+62		National Grid	OH Utility (Electric)	Perpendicular	Overhead - North side of Delaware TPKE	B
	50810+62		National Grid	OH Utility (Electric)	Perpendicular	Pole on east side of the alignment	B
	50811+00		Town of Bethlehem	Storm Sewer	Perpendicular	North side of Delaware TPKE	B
	50811+15		Town of Bethlehem	Storm Sewer	Perpendicular	Middle of Delaware TPKE	B
	50811+24		Town of Bethlehem	Storm Sewer	Perpendicular	South side of Delaware TPKE	B
	50811+35		National Grid	OH Utility (Electric)	Perpendicular	Pole on east side of the alignment	B
	50811+40		Time Warner	OH Utility (Fiber)	Perpendicular	(2) OH Fiber lines on east side of alignment	D
	50811+55		Verizon	UG Utility (Telephone)	Perpendicular	(3) UG Utility Telephone lines on east side of alignment	D

Champlain Hudson Power Express

Upland Co-Located Utility Summation Matrix

Revision Date: 03/06/2023

Segment(s)	General Location of Utility		Owner	Utility	Utility		Quality Level (A/B/C/D)
	Station (Starting Point for Parallel and Crossing Point for Perpendicular)	Station (Ending Point for Parallel)			Parallel/ Perpendicular	Description (optional)	
	50811+55	50815+00	National Grid	UG Utility (Electric)	Parallel	UG Electric on east side of alignment	B
	50816+00		CSX RR	Storm Drainage Pipe/Culvert	Perpendicular	CMP	B
	50819+58		CSX RR	Storm Drainage Pipe/Culvert	Perpendicular	RCP	B
	50833+75		Verizon	UG Utility (Telephone)	Perpendicular	UG Utility Telephone lline crossing the alignment	D
	50834+40		CSX RR	Storm Drainage Pipe/Culvert	Perpendicular	RCP	B
	50838+85		National Grid	OH Utility (Electric)	Perpendicular	OH electric, pole	B
	50840+09		Kinder Morgan	UG Utility (Gas Transmission)	Perpendicular	Tennessee Gas Line - 42.59347746, -73.88526835	B
	50840+70		Kinder Morgan	UG Utility (Gas Transmission)	Perpendicular	Tennessee Gas Line - 42.59347746, -73.88526836	B
	50841+00		Kinder Morgan	UG Utility (Gas Transmission)	Perpendicular	Tennessee Gas Line - 42.59347746, -73.88526837	B
	50850+75		National Grid	UG Utility (Gas)	Perpendicular	Gas line	D
	50875+70		CSX RR	UG Utility (Electric)	Perpendicular	RR Electrical, 2 Lines	B
	50876+90		CSX RR	UG Utility (Electric)	Perpendicular	RR Electrical, 4 Lines	B
	50877+65		National Grid	OH Utility (Transmission)	Perpendicular	OH transmission line	D
	50878+30		National Grid	OH Utility (Transmission)	Perpendicular	OH transmission line	D
	50893+37		CSX RR	Storm Drainage Pipe/Culvert	Perpendicular	Concrete Box	B
	50897+85	50898+75	CSX RR	Storm Drainage Pipe/Culvert	Parallel	RCP Parallel to alignment	B

Four separate quality levels of subsurface utility facility information are generally recognized and are as follows:

- Quality Level A (QLA): Quality Level A is the highest degree of accuracy. The information shown on the plans has been obtained by the actual exposure (or verification of previously exposed and surveyed utility facilities) of subsurface utilities.

Champlain Hudson Power Express

Upland Co-Located Utility Summation Matrix

Revision Date: 03/06/2023

Segment(s)	General Location of Utility		Owner	Utility	Utility		Quality Level (A/B/C/D)
	Station (Starting Point for Parallel and Crossing Point for Perpendicular)	Station (Ending Point for Parallel)			Parallel/ Perpendicular	Description (optional)	

- using (typically) minimally intrusive excavation equipment to determine their precise horizontal and vertical positions, as well as their other utility facility attributes. (Shown as QLA)
- Quality Level B (QLB): Quality Level B is the second highest degree of accuracy. The information shown on the plans has been obtained through the application of appropriate surface geophysical methods (i.e., underground cameras, radar, sonar, tone outs, etc.) to identify the existence and appropriate horizontal position of subsurface utility facilities. Quality Level B data are reproducible by surface geophysics at any point of their depiction. The information was surveyed to applicable tolerances and reduced onto the plans. No excavations were performed. (Shown as QLB)
 - Quality Level C (QLC): Quality Level C is the third highest degree of accuracy. The information shown on the plans has been obtained by surveying and plotting visible above-ground utility features and by using professional judgement in correlating this information to Quality Level D information. (Shown as QLC)
 - Quality Level D (QLD): Quality Level D is the lowest degree of accuracy. The information shown on the plans was derived solely from existing NYSDOT and/or utility company records or recollections. (Shown as QLD)

**Champlain Hudson Power Express
Upland Co-Located Infrastructure
Fact Sheet**

Project Background

- The Champlain Hudson Power Express (CHPE) is a 339-mile underground and underwater high voltage direct current (HVDC) electric transmission line that will import up to 1,250 MW of renewable power from Canada and send it to the New York City metro area.
- Transmission Developers Inc. (TDI) is the developer of the project.
- TDI is owned by Blackstone, a company based in New York.
- The transmission line is fully permitted at the State and Federal level and has been under development for roughly 10 years.
- The upland portion of the transmission line will be located primarily within transportation corridor (railway or highway) rights-of-way.

Construction Timing & EM&CP

- Construction is anticipated for 2022 -2025
- A map of the Project is included as Attachment A.
- Prior to construction commencing, CHPE must file an Environmental Management & Construction Plan (EM&CP) and receive approval from the State for this segment prior to installing the transmission line cables. The EM&CP will include detailed construction means and methods, and schedule. The EM&CP will be subject to public review and your organization will have the opportunity to review it before it becomes final.

- In preparation for that filing, TDI needs to coordinate with owners co-located infrastructure (CI) along this permitted route.
- TDI would like to (1) establish a contact with someone at your company/town who is responsible for this CI; (2) understand your process for discussing utility crossings; and (3) answer questions.

Overview of CI crossings and CHPE construction

- The underground portion of the buried transmission line will be installed in a trench approximately three (3) feet wide and five (5) feet deep and will require minimal or no maintenance during its 60+ year operational life (Typical trench detail - Attachment B).
- Within the trench, the cables will be installed in plastic conduit. There will also be a fiber optic cable installed within the trench.
- Proposed underground installation will be primarily in the shoulders of roadways, under the road's pavement or along the edge of the Canadian Pacific or CSX railroad rights-of-way.
- Once the cables are installed, the ground will be restored.
- Directly over the transmission lines, vegetation maintenance will be required to ensure deep rooted trees do not grow. Otherwise, no maintenance is needed.
- TDI has worked closely with the local towns, NYSDOT, and the Canadian Pacific and CSX railroads regarding CHPE, and it is coordinating the final design with them.
- Depending on the depth of the existing overland CI infrastructure, if within the 15 ft depth range, our preferred approach is to install our HVDC cables

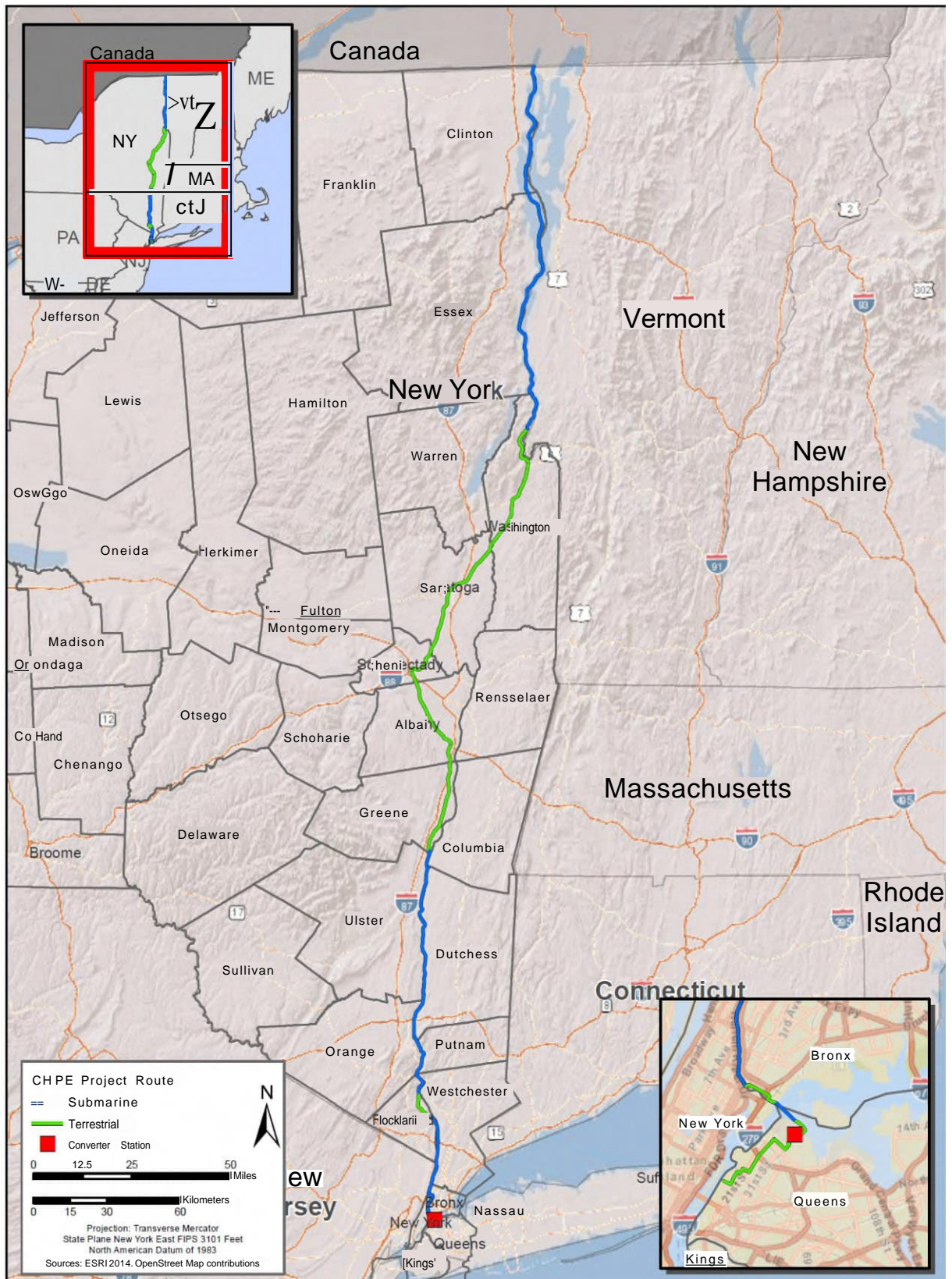
under all buried infrastructure. TDI will accomplish that by working with the CI-owners to establish the best methodology for exposing, supporting, and performing our cable installation under the existing infrastructure. (Typical crossing under CI - Attachment C)

- Our proposal for crossing under CI will follow industry standard crossing methods. Adequate temporary construction supports will be provided for the exposed co-located utilities below grade.
- For deeper CI (usually greater than 15ft) or when there is significant concentration of CI infrastructure within a particular area, horizontal directional drilling (HDD) will be employed to cross under the existing utilities.
- For proposed HDDs, two bored conduits approximately separated at a minimum distance of 15 ft will be installed following the required depth to house the HVDC cables.
- In the event TDI cannot install its cable conduit under buried infrastructure, it will cross over the existing CI utilities via open trench, provided that the minimum cover of 60 inches can be provided over the proposed HVDC cables in roadway and 30 inches of cover in roadside, other vegetated areas and within railroad right-of-way per the below detail (Typical crossing over CI - Attachment D).
- In crossing the existing co-located utilities, TDI and their contractors shall also install the proposed HVDC cables with at least the minimum clearance criteria specified by each individual utility owner.
- Regarding proposed trench installation over existing large municipal storm culverts, an underground utility bridging support structure will be

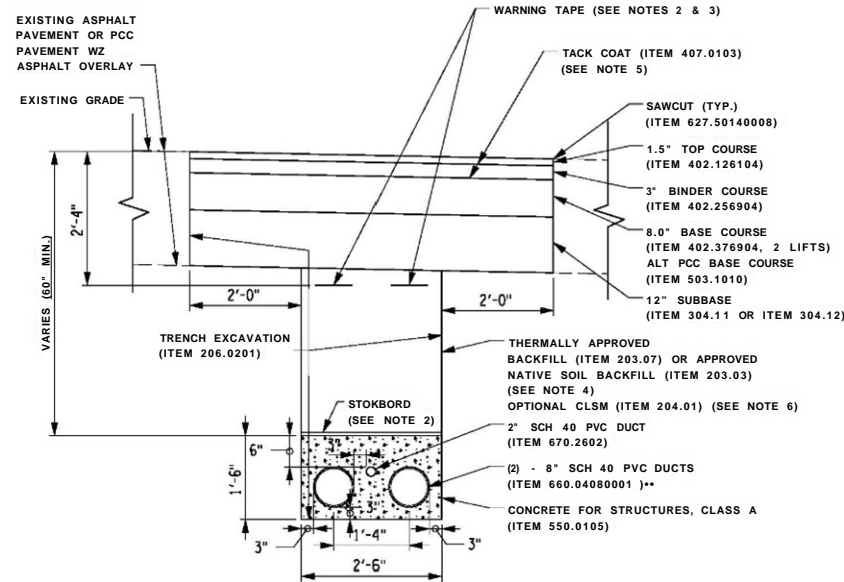
constructed to allow the proposed HVDC cables to be self-supported across the span in the event the storm culverts require future repair or replacement. (Typical CI support- Attachment E.)

- As part of development of a crossing plan for your CI, TDI will work with the respective CI owners, to:
 - o Establish and conduct a subsurface utility survey to determine the precise location of the infrastructure within the limits of the proposed CHPE cable installation, including:
 - Depth from roadway and/or ground surface
 - Physical width and footprint occupied by the CI
 - Existence of CI supporting structures to be avoided
 - o Confirm proposed crossing installation including the requirements for CI temporary support.
 - o Eventually, based on this information, TDI will work with each CI owner to consummate a formal CI agreement as necessary.

Attachment A



Attachment B



TYPICAL FLAT CABLE ALIGNMENT IN DUCTBANK
TRENCH CROSS SECTION (ROADWAY INSTALLATION)

SCALE: 1\"/>

ITEM	DESCRIPTION
203.07	EMBANKMENT IN PLACE
203.07	SELECT GRANULAR FILL
206.0201	CONTROLLED LOW STRENGTH MATERIAL
206.0201	TRENCH AND CULVERT EXCAVATION
304.11	SUBBASE COURSE, TYPE 1
304.12	SUBBASE COURSE, TYPE 2
402.1261	12.5 FI TOP COURSE HMA, 60 SERIES COMPACTION
402.2561	25 F9 BINDER COURSE HMA, 60 SERIES COMPACTION
402.3761	37.5 F9 BASE COURSE HMA, 60 SERIES COMPACTION
407.0103	STRAIGHT TACK COAT
555.0105	CONCRETE FOR STRUCTURES, CLASS A
627.5014	CUTTING PAVEMENT
660.04080001**	FURNISH AND INSTALL PVC UTILITY CONDUIT - 8 INCH
670.2602	RIGID PLASTIC CONDUIT, 2"

*SPECIAL SPEC
**SPECIAL NOTE:

FOLLOW SPECIAL SPECIFICATION 660.04060001. CONDUIT
SIZE, FITTINGS AND CONNECTIONS TO BE REVISED TO 8"
AND SCHEDULE TO BE SCH 40.

NOTES:

1. FILL MATERIAL SHALL HAVE THERMAL RESISTIVITY
OF 1.0 K-cmZW OR LESS.
2. FITTINGS, CONNECTIONS, WARNING TAPE, AND STOKBORD
WILL BE INCLUDED UNDER
ITEM 660.04080001.
3. WARNING TAPE DEPTH TO MEET THE REQUIREMENTS
OF NEC SECTION 300.5(D)(3).
4. FOR INSTALLATION NOT LOCATED IN ROADWAYS.
APPROVED NATIVE SOIL BACKFILL
WILL EXTEND TO WITHIN FOUR (4) INCHES OF
EXISTING GRADE.
5. TACK COAT SHALL BE APPLIED TO ALL EXPOSED
EDGES AND BETWEEN EVERY LIFT.

APPROVED ON:	APPROVED ON:
SIGNATURE:	SIGNATURE:
STAMP:	STAMP:

IT IS A VIOLATION OF LAW FOR ANY PERSON, UNLESS THEY ARE
ACTING UNDER THE DIRECTION OF A LICENSED PROFESSIONAL
ENGINEER, ARCHITECT, LANDSCAPE ARCHITECT, OR LAND SURVEYOR,
TO ALTER AN ITEM IN ANY WAY. IF AN ITEM BEARING THE STAMP OF
A LICENSED PROFESSIONAL IS ALTERED, THE ALTERING ENGINEER,
ARCHITECT, LANDSCAPE ARCHITECT, OR LAND SURVEYOR SHALL SIGN
THE DOCUMENT AND INCLUDE THE NOTATION "ALTERED BY" FOLLOWED
BY THEIR SIGNATURE, THE DATE OF SUCH ALTERATION, AND A
SPECIFIC DESCRIPTION OF THE ALTERATION.

REVISIONS			
DATE	DESCRIPTION	BY	SYM

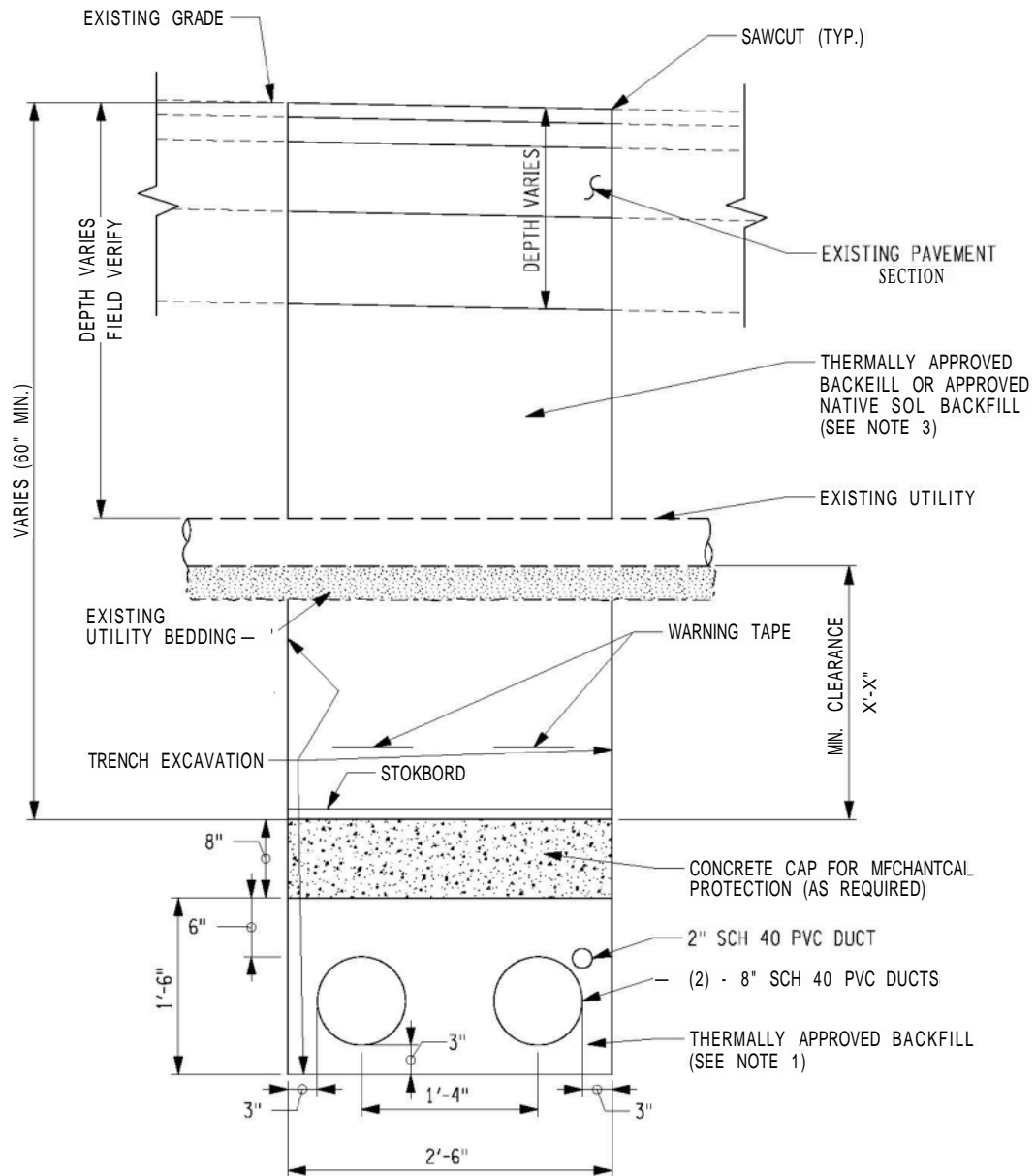
TOUOKSIOHOCVELOHKS.HC.
1301 AVENUE OF THE AMERICAS
NEW YORK, NY 10019-6022

A=COM

TITLE OF PROJECT
CLAMPLAIN HUDSON POTER EXPRESS
LOCATION OF PROJECT
TYPICAL TRENCH CROSS SECTION
WITH PVC CONDUIT IN DXTBAM

CONTRACT NUMBER:
60323056
DATE:
03/04/2021
DRAWING NUMBER:

DESIGN SUPERVISOR: _____




TYPICAL UTILITY CROSSING DETAIL

NOTES:

NOT TO SCALE

1. FILL MATERIAL SHALL HAVE THERMAL RESISTIVITY OF 1.0 K*m/W OR LESS.
2. WARNING TAPE DEPTH TO MEET THE REQUIREMENTS OF NEC SECTION 300.5(D)(3).
3. FOR INSTALLATION NOT LOCATED IN ROADWAYS, APPROVED NATIVE SOL BACKFILL WILL EXTEND TO WITHIN FOUR M) INCHES OF EXISTING GRADE.

CHAMPLAIN HUDSON POWER EXPRESS TRANSMISSION DEVELOPERS, INC.	PRWEC TITLE	LOCATIONS	
		DRAWING TITLE	DATE: 07/07/2020 CPAWNCHNUMBER: FIG XX
TYPICAL UTILITY CROSSING DETAIL			

Attachment E

AZCOM

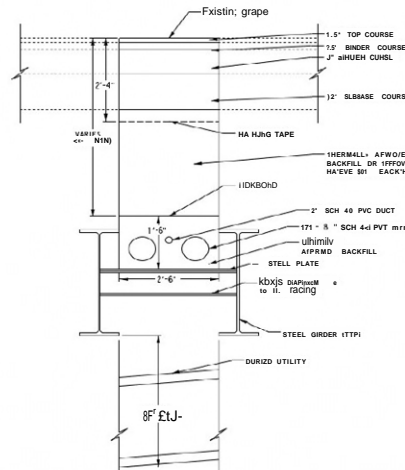
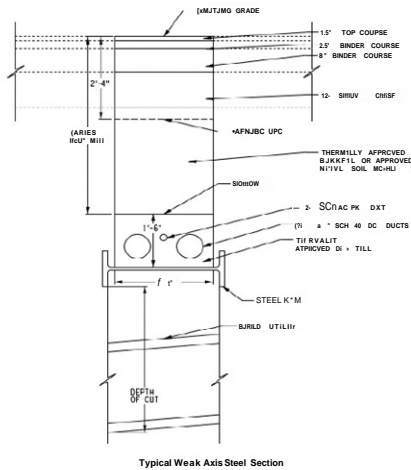
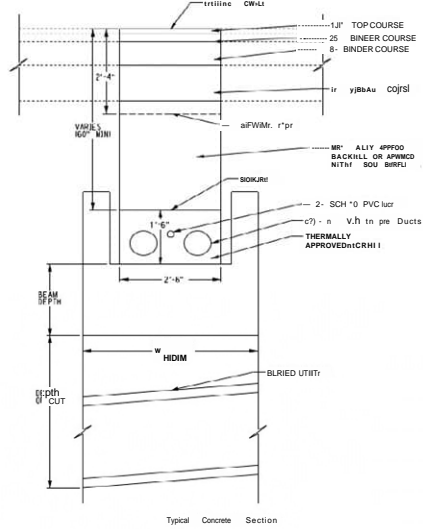
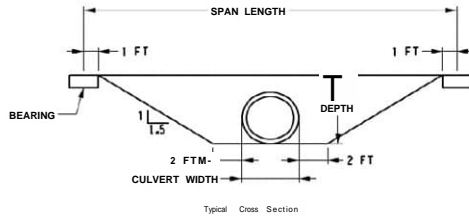
AECUM U.S.A., LLC
40 British American Blvd.
Latham, NY 12110

PROJECT NO. 80323058
Prepared By: IMP Date: 12/11/2020
Reviewed By: MWO Date: 12/11/2020
Approved By: Date:

CALCULATION SHEET

Client TDI
Project: CHPE
Subject: Underground Utility Support

Description: Preliminary Review of Utility Support Options over culvert replacements
Details:

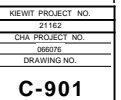


Support Sizes

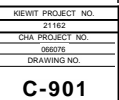
		Depth of Cut (ft)															
		5	6	7	8	9	10	11	12	13	14	15	16	17	18	19	20
Culvert Width (ft)	1.38	1-A	2-A	3-C	4-D	5-E	5	5	5	5	5	6	6	6	6	6	6
	1.65	1-A	2-A	3-C	4-D	5-E	5	5	5	5	5	6	6	6	6	6	6
	1.92	1-A	2-A	3-C	4-D	5-E	5	5	5	5	5	6	6	6	6	6	6
	2.50	1-A	3-B	3-C	4-D	5-E	5	5	5	5	5	6	6	6	6	6	6
	3.08	1-A	3-B	4-D	5-D	5	5	5	5	5	5	6	6	6	6	6	6
	3.67	1-A	3-B	4-D	5-L	5	5	5	5	5	5	6	6	6	6	6	6
	4.00	1-A	3-B	4-D	5-D	5	5	5	5	5	5	6	6	6	6	6	6
	4.50	2-A	3-C	4-D	5-F	5	5	5	5	5	6	6	6	6	6	6	6
	5.00	2-A	3-C	4-D	5-F	5	5	5	5	5	6	6	6	6	6	6	6

Type	Steel Beam Size
1	W36X231 - Weak Axis Support
2	W36X247 - Weak Axis Support
3	W36X330 - Weak Axis Support
4	W36X395 - Weak Axis Support
5	21W36X135 - Strong Axis Support
6	21W36X231 - Strong Axis Support

Type	Concrete Beam Width	Beam Depth
A	52	18
B	52	20
C	52	24
D	52	30
E	52	36



DRAWN BY: WSO		DESIGNED BY: WSO		APPROVED BY:		SCALE	AS NOTED	DATE	11/02/2021
						REV. NO.	A	SH.NO.	XXX OF XXX



DRAWN BY: WSO DESIGNED BY: WSO APPROVED BY:	SCALE	AS NOTED	DATE	XX/XX/XXXX
	REV. NO.	A	SH.NO.	XXX OF XXX

CONFIDENTIAL -- Not Subject to FOIL

Package 5A (Segment 8) CI Crossing Agreement Status Details

Utility Owner	Utility Type (Quantity)	Agreement Status/Date	Details	RUA Notes
AT&T	Underground Fiber (3)	Documentation showing agreement is in place 10/17/22.	10/17/22 CI Owner confirmed the plans to be acceptable.	NA
Windstream Communications (Dominion, Elantic, Telergy)	Underground Fiber (5)	CHPE to provide final custom format plans for CI Owner review and sign off.	05/01/23 emailed statement ² to CI Owner.	NA

Package 5A (Segment 8) CI Crossing Agreement Status Details

Utility Owner	Utility Type (Quantity)	Agreement Status/Date	Details	RUA Notes
			IFC CI Owner final custom format package to be provided.	
Eastern Gas	Underground gas (2)	Documentation showing agreement is in place 5/1/23.	05/01/23 emailed statement ² to CI Owner and received reply indicating agreement. IFC CI Owner final custom format package to be provided.	NA
Kinder Morgan	Underground gas (3)	Updated CI Owner package sent 4/26 responding to KM comments to :		NA

Package 5A (Segment 8) CI Crossing Agreement Status Details

Utility Owner	Utility Type (Quantity)	Agreement Status/Date	Details	RUA Notes
			IFC CI Owner final custom format package to be provided.	
National Grid	Overhead Electric Distribution (31); Overhead Electric Transmission (5); Underground Electric Distribution (8)	Biweekly meetings, comments on location and crossings. Comments on this segment received in January. CHPE responded in March and April. NG reviewing.	5/4/23 received statement ³ from National Grid.	NA
Sprint	Overhead Fiber (1); Underground Fiber (4)	CHPE to provide final custom format plans for CI Owner review and sign off.		NA

Package 5A (Segment 8) CI Crossing Agreement Status Details

Utility Owner	Utility Type (Quantity)	Agreement Status/Date	Details	RUA Notes
			<p>IFC CI Owner final custom format package to be provided.</p>	
Time Warner	<p>Underground telephone (7);</p> <p>Overhead Fiber (2);</p> <p>Underground Fiber (2)</p>	<p>Documentation showing agreement is in place 4/28/23.</p>		NA

Package 5A (Segment 8) CI Crossing Agreement Status Details

Utility Owner	Utility Type (Quantity)	Agreement Status/Date	Details	RUA Notes
			IFC CI Owner final custom format package to be provided.	
Verizon	Overhead Telephone (5)	Documentation showing agreement is in place 5/2/23.	<p>05/01/23 emailed statement² to CI Owner.</p> <p>5/2/23 received reply indicating agreement.</p> <p>IFC CI Owner final custom format package to be provided.</p>	NA
City of Schenectady	Water Line (4)	CI Owner provided crossing information, no response to date.	p	NA; CHPE not crossing city-owned roads or lands (Crossing Agreement only).
Town of Rotterdam	Water Line (5) Storm Drain/pipe/culvert (3)	Road Use and Crossing Agreement in negotiation with Town. ⁴	<p>5/5/23 – CHPE sent request⁴ regarding RUA that is still under Negotiation.</p>	Road Use and Crossing Agreement under review by Town.

Package 5A (Segment 8) CI Crossing Agreement Status Details

Utility Owner	Utility Type (Quantity)	Agreement Status/Date	Details	RUA Notes
Town of Guilderland	Water Line (15)	RUA in negotiation with Town. ⁴	5/5/23 – CHPE sent request ⁴ regarding RUA that is still under Negotiation.	Road Use and Crossing Agreement under review.
Village of Voorheesville	Water Line (3) Storm Sewer (2)	RUA approved by Village.		Road Use and Crossing Agreement approved at meeting week of 5/1/23; fully executed agreement anticipated week of 5/8/23.
Town of New Scotland	N/A	RUA in negotiation with Town.		Road Use and Crossing Agreement under review.
Town of Bethlehem	Water Line (3) Storm Sewer (3)	Agreement in place (RUA)		Road Use and Crossing Agreement executed on March 23, 2022.

Notes:

- 1) Emailed Statement:** As you know, CHPE has been in ongoing dialogue with you regarding the design of CHPE's facilities in the proximity of your utility. You understand from CHPE that the design reflects your feedback. The designs in the proximity of your utility remain subject to your final comments and approval, which will be memorialized prior to the commencement of any construction activities in the vicinity of your utility.

Package 5A (Segment 8) CI Crossing Agreement Status Details

Utility Owner	Utility Type (Quantity)	Agreement Status/Date	Details	RUA Notes
---------------	----------------------------	--------------------------	---------	-----------

CHPE kindly requests that you reply to this email as soon as possible confirming the statement above is accurate, or rephrase as you deem appropriate.

- 2) **Emailed Statement:** As you know, CHPE has been in ongoing dialogue with you regarding the design of CHPE's facilities in the proximity of your utility. Based on our most recent communications, we acknowledge that you are awaiting reformatted plan and profile drawings from our CHPE team to further facilitate your review of the proposed CHPE facility design relative to your infrastructure, but that we have a general understanding of the protections necessary for construction proximate to your utility infrastructure and the general timeline for CHPE construction. Our engineer of record, Kiewit, is preparing those drawings and we expect to furnish to you within the next 15 business days, so you can complete your review.

All designs in the proximity of your utility remain subject to your final comments, which you and CHPE will agree to prior to the commencement of construction activities in the vicinity of your utility.

As part of the State's EM&CP process, they have requested we provide updates on all CI interactions. In turn, we kindly request that you reply to this email as soon as possible confirming the statement above is accurate (or rephrase as you deem appropriate). If we don't receive a response from you, we will assume that you agree with the statements above, subject to your receipt and review of the requested plans.

- 3) **Statement from National Grid:** With respect to Segments 8/9 (Design packages 5A& 5B) CHPE has been in ongoing consultation with National Grid regarding the design of CHPE's facilities within the proximity of our utilities along its proposed alignment. To date, our team is continuing to work with the CHPE design, construction, and real estate occupancy teams to ensure that all elements of the proposed collocation interaction are in conformance with National Grid's requirements. While these consultations are progressing and expect we will be able to reach agreement, the CHPE designs within the proximity of National Grid utilities remain subject to our final comments, conditions, and approval, which will be memorialized in the EM&CP documents and appropriate agreements prior to the commencement of any construction activities on National Grid property and/or proximate to National Grid assets.
- 4) **Request sent to Municipalities whose RUA is still under Negotiation:** As you know, CHPE has been in ongoing dialogue with you regarding the design of CHPE's facilities within your municipality including utility crossings. You understand from CHPE that the design reflects your feedback. The designs in the proximity of your municipally owned utilities remain subject to your final comments and approval, which will be memorialized prior to the commencement of any construction activities in the vicinity of your utility. As part of the State's EM&CP process, they have requested we provide updates on all interactions with private and public utility owners. In turn, we kindly request that you reply to this email as soon as possible confirming the statement above is accurate (or rephrase as you deem appropriate). If we don't receive a response from you, we will assume that you agree with the statements above, subject to your receipt and review of the final requested plans.

Package 5A
CI Owner Consultations

Cole, Benjamin

From: luke@lynntools.com
Sent: Monday, October 17, 2022 9:31 AM
To: Cole, Benjamin; lm5215@att.com; larry@lynntools.com; bill@lynntools.com
Subject: RE: KWT - Overland: New Transmittal - WSP-ATT-TRNS-0123 - CHPE Package 5A Co-
Located Infrastructure Matrix and Drawings - ATT

Ben,

This looks fine.

Thanks

Luke McCarthy
Lynn Utilities Services
Project Manager

From: Cole, Benjamin <Ben.Cole@wsp.com>
Sent: Friday, October 14, 2022 8:25 AM
To: luke@lynntools.com; lm5215@att.com; larry@lynntools.com; bill@lynntools.com
Subject: RE: KWT - Overland: New Transmittal - WSP-ATT-TRNS-0123 - CHPE Package 5A Co-Located Infrastructure
Matrix and Drawings - ATT

Great. Thank you Luke.

Ben Cole

ben.cole@wsp.com

From: luke@lynntools.com <luke@lynntools.com>
Sent: Friday, October 14, 2022 5:29 AM
To: Cole, Benjamin <Ben.Cole@wsp.com>; lm5215@att.com; larry@lynntools.com; bill@lynntools.com
Subject: RE: KWT - Overland: New Transmittal - WSP-ATT-TRNS-0123 - CHPE Package 5A Co-Located Infrastructure
Matrix and Drawings - ATT

Ben – I have not been able to look at this yet. I will shortly.

Thanks

Luke McCarthy
Lynn Utilities Services
Project Manager

From: Cole, Benjamin <Ben.Cole@wsp.com>

Sent: Thursday, October 13, 2022 6:45 PM

To: luke@lynntools.com; lm5215@att.com; larry@lynntools.com; bill@lynntools.com

Subject: RE: KWT - Overland: New Transmittal - WSP-ATT-TRNS-0123 - CHPE Package 5A Co-Located Infrastructure Matrix and Drawings - ATT

Good Evening All,

Checking in to see if you have reviewed the CHPE Package 5A (please see below). Apologies if you responded regarding 5A already but I am not seeing.

Thank You,

Ben Cole

ben.cole@wsp.com

From: CHPE-KWT@portal3.pbid.com <CHPE-KWT@portal3.pbid.com>

Sent: Thursday, September 8, 2022 2:02 PM

To: luke@lynntools.com; lm5215@att.com; larry@lynntools.com; bill@lynntools.com; Cole, Benjamin <Ben.Cole@wsp.com>

Cc: CHPE-KWT@portal3.pbid.com

Subject: KWT - Overland: New Transmittal - WSP-ATT-TRNS-0123 - CHPE Package 5A Co-Located Infrastructure Matrix and Drawings - ATT

Workflow Notification

A new Transmittal has been entered into the system.

Transmittal #: WSP-ATT-TRNS-0123

Subject: CHPE Package 5A Co-Located Infrastructure Matrix and Drawings - ATT

ATTN: Luke McCarthy, Lou Mareello, Bill Lown

From: Ben Cole

Issue Purpose: For Your Information

Date Transmitted: 9/2/2022

Comments: Good Afternoon,

I'm writing on behalf of Transmission Developers Inc. ("TDI"), owner of the Champlain Hudson Power Express ("CHPE" or "Project") transmission line project. The purpose of this correspondence is to provide more detailed information related to how the CHPE project is designed to interact with your infrastructure and to solicit feedback from your company regarding the Project's alignment.

The CHPE is a fully permitted 339-mile underground and underwater high voltage direct current (HVDC) electric transmission line that will import up to 1,250 MW of renewable power from Canada and send it to the New York City metro area (see <https://chpexpress.com> for additional information).

At the enclosed link please find design drawings of the proposed CHPE alignment where it involves your infrastructure within the CHPE Package referenced in the title of this message.

TDI will be submitting these plans to the New York State Public Service Commission ("PSC") for approval prior to construction.

Please review the linked information regarding the CHPE alignment relating to your infrastructure and provide concurrence with the Project's cable separation and alignment and any feedback to ben.cole@wsp.com by September 16, 2022.

It is important to TDI that the construction and operation of the CHPE project does not interfere with the continued operation of your infrastructure.

To the extent that the CHPE alignment interacts with your infrastructure within future Segment EM&CP submissions, we will provide you with similar drawings in advance of those filings. I look forward to coordinating with you as we finalize the design of the CHPE project.

Thank You,

Ben Cole
WSP USA, on behalf of TDI

ben.cole@wsp.com

File Links (link will be active for 60 days):

File Name
Package 5A_ATT_Co-Located Infrastructure_2022-08-22.pdf

CHPE SharePoint users can access the record and file(s) using the link below:

https://chpe.pbid.com/KWT/_layouts/15/DocSetHome.aspx?id=/KWT/Transmittals/CHPE%20Package%205A%20Co-Located%20Infrastructure%20Matrix%20and%20Drawings%20-%20ATT&OpenIn=browser

Disclaimer: The information contained in this email, including linked content, is considered confidential and may be privileged. It is intended only for the person or entity to which it is addressed and must not be sent or made accessible to other recipients. If you are not the intended recipient, you are hereby notified that any review, retransmission, dissemination or other use of, or taking any action in reliance upon this information is strictly prohibited. If you have received this email in error, kindly notify chpedoccontrol@portal3.pbid.com and delete the original message from your system.

Thank You.

NOTICE: This communication and any attachments ("this message") may contain information which is privileged, confidential, proprietary or otherwise subject to restricted disclosure under applicable law. This message is for the sole use of the intended recipient(s). Any unauthorized use, disclosure, viewing, copying, alteration, dissemination or distribution of, or reliance on, this message is strictly prohibited. If you have received this message in error, or you are not an authorized or intended recipient, please notify the sender immediately by replying to this message, delete this message and all copies from your e-mail system and destroy any printed copies.

Cole, Benjamin

From: Cole, Benjamin
Sent: Tuesday, April 4, 2023 12:30 PM
To: Halas, Frank
Subject: RE: CHPE Collocated Infrastructure Details_EM&CP_3 and 6 Dominion Telecom and Telergy

Thank you Frank. I'll take this back to the design team and get a request in today. Appreciate the feedback.

Ben Cole

ben.cole@wsp.com

From: Halas, Frank <Frank.Halas@windstream.com>
Sent: Tuesday, April 4, 2023 12:21 PM
To: Cole, Benjamin <Ben.Cole@wsp.com>
Subject: RE: CHPE Collocated Infrastructure Details_EM&CP_3 and 6 Dominion Telecom and Telergy

Hey Ben,

If I'm to look at any more layouts, I need a better, clearer underlay of your proposed job. It took me forever to pick my stuff out with the graphics you gave me. I've included my contact info in case we need to talk.

Thanks

Frank Halas
Construction Manager II
CT,DE,MA,MD,ME,NH,NJ,NY,PA
Windstream Communications
Frank.halas@windstream.com

14 Corporate Cir.
Suite 7
E. Syracuse, NY 13057

Sensitivity: Internal

From: Cole, Benjamin <Ben.Cole@wsp.com>
Sent: Tuesday, April 4, 2023 11:25 AM
To: Halas, Frank <Frank.Halas@windstream.com>; Grodi, Aaron M <Aaron.Grodi@windstream.com>
Cc: Grassi, Laura <Laura.Grassi@wsp.com>
Subject: RE: CHPE Collocated Infrastructure Details_EM&CP_3 and 6 Dominion Telecom and Telergy

CAUTION: This email originated from outside of the organization. Do not click links or open attachments unless you recognize the sender and know the content is safe.

Thank you Frank - that's helpful. I have a couple questions.

Can you look at the three packages at the links; refer to the table that's found on the first page of each package, and confirm accuracy (does your company own the line? is the info in the table accurate?) I see the following # of crossings per package:

Telergy Package 5A	1 crossing
Dominion Pckg 5A	5 crossing
Elantic Pckg 5A	1 crossing

My understanding is Windstream owns Telergy, Dominion, and Elantic.

Are there any crossings missing? This CHPE package (5A) runs from Rotterdam to Selkirk.

Thank you for the help.

Ben Cole

ben.cole@wsp.com

From: Halas, Frank <Frank.Halas@windstream.com>

Sent: Tuesday, April 4, 2023 11:08 AM

To: Cole, Benjamin <Ben.Cole@wsp.com>; Grodi, Aaron M <Aaron.Grodi@windstream.com>

Subject: RE: CHPE Collocated Infrastructure Details_EM&CP_3 and 6 Dominion Telecom and Telergy

Ben,

Hope this is what you are looking for...

Sensitivity: Internal

From: Cole, Benjamin <Ben.Cole@wsp.com>

Sent: Tuesday, April 4, 2023 8:08 AM

To: Halas, Frank <Frank.Halas@windstream.com>; Grodi, Aaron M <Aaron.Grodi@windstream.com>

Subject: RE: CHPE Collocated Infrastructure Details_EM&CP_3 and 6 Dominion Telecom and Telergy

CAUTION: This email originated from outside of the organization. Do not click links or open attachments unless you recognize the sender and know the content is safe.

Good Morning. Any comments/feedback available from Windstream on the drawings/information below? Package 5A (Telergy, Dominion, Elantic) is the current priority for the CHPE project. Please let me know if you have questions or comments.

Thank You,

Ben Cole

ben.cole@wsp.com

From: Cole, Benjamin

Sent: Wednesday, March 22, 2023 3:50 PM

To: Halas, Frank <Frank.Halas@windstream.com>; Grodi, Aaron M <Aaron.Grodi@windstream.com>

Subject: RE: CHPE Collocated Infrastructure Details_EM&CP_3 and 6 Dominion Telecom and Telergy

Thank you sir!

Ben Cole

ben.cole@wsp.com

From: Halas, Frank <Frank.Halas@windstream.com>

Sent: Wednesday, March 22, 2023 3:40 PM

To: Cole, Benjamin <Ben.Cole@wsp.com>; Grodi, Aaron M <Aaron.Grodi@windstream.com>

Subject: RE: CHPE Collocated Infrastructure Details_EM&CP_3 and 6 Dominion Telecom and Telergy

Reviewing now...

Sensitivity: Internal

From: Cole, Benjamin <Ben.Cole@wsp.com>

Sent: Wednesday, March 22, 2023 3:20 PM

To: Grodi, Aaron M <Aaron.Grodi@windstream.com>; Halas, Frank <Frank.Halas@windstream.com>

Subject: RE: CHPE Collocated Infrastructure Details_EM&CP_3 and 6 Dominion Telecom and Telergy

CAUTION: This email originated from outside of the organization. Do not click links or open attachments unless you recognize the sender and know the content is safe.

Hello,

For your review and comment please see below an updated link to design drawings for the CHPE alignment in the vicinity of a fiber line that we understand is owned by Telergy in Package 5A.

[Telergy Package 5A](#)

Thanks,

Ben Cole

ben.cole@wsp.com

From: Cole, Benjamin

Sent: Wednesday, March 22, 2023 2:31 PM

To: Grodi, Aaron M <Aaron.Grodi@windstream.com>; Halas, Frank <Frank.Halas@windstream.com>

Subject: RE: CHPE Collocated Infrastructure Details_EM&CP_3 and 6 Dominion Telecom and Telergy

Good Afternoon,

Please see updated links for CHPE Package 5A below. We have not yet received feedback from your organization and the design in this area is approaching completion. Please review this information and let me know any comments. Thank you.

[Dominion Pckg 5A](#)
[Elantic Pckg 5A](#)

Ben Cole

ben.cole@wsp.com

From: Cole, Benjamin
Sent: Monday, October 10, 2022 4:41 PM
To: Grodi, Aaron M <Aaron.Grodi@windstream.com>; Halas, Frank <Frank.Halas@windstream.com>
Subject: RE: CHPE Collocated Infrastructure Details_EM&CP_3 and 6 Dominion Telecom and Telergy

Good Afternoon,

I'm checking in to see if you have comments on the drawings found at the links below.

I've consolidated the list in this most recent message:

[CHPE-SUB-0108-00-Elantic Telecomm - Utility Matrix 8.23.2022.pdf](#)
[CHPE-SUB-0108-00-Dominion Telecom - Utility Matrix 8.23.2022.pdf](#)
[Package 5A_Dominion_Co-Located Infrastructure_2022-08-22.pdf](#)
[Package 5A_Elantic_Co-Located Infrastructure_2022-08-22.pdf](#)
[Package 6_Dominion Telecom_Co-Located Infrastructure_2022-09-14.pdf](#)
[Package 6_Telergy_Co-Located Infrastructure_2022-09-15.pdf](#)

Thank You,

Ben Cole

ben.cole@wsp.com

From: Cole, Benjamin
Sent: Tuesday, September 27, 2022 11:28 AM
To: Grodi, Aaron M <Aaron.Grodi@windstream.com>; Halas, Frank <Frank.Halas@windstream.com>
Subject: RE: CHPE Collocated Infrastructure Details_EM&CP_3 and 6 Dominion Telecom and Telergy

Here is the link to the EM&CP Package 5A for Elantic utilities.

[Package 5A_Elantic_Co-Located Infrastructure_2022-08-22.pdf](#)

Thank You,

Ben Cole

ben.cole@wsp.com

From: Cole, Benjamin
Sent: Tuesday, September 27, 2022 11:22 AM

To: 'Grodi, Aaron M' <Aaron.Grodi@windstream.com>; 'Halas, Frank' <Frank.Halas@windstream.com>

Subject: RE: CHPE Collocated Infrastructure Details_EM&CP_3 and 6 Dominion Telecom and Telergy

Good Morning,

Please find at the link a plan/profile depicting EM&CP Package 5A for your review and comment.

[Package 5A_Dominion_Co-Located Infrastructure_2022-08-22.pdf](#)

Please provide any feedback to me that you may have on how the CHPE alignment interacts with your infrastructure.

Thank You,

Ben Cole

ben.cole@wsp.com

From: Cole, Benjamin

Sent: Friday, September 23, 2022 1:24 PM

To: 'Grodi, Aaron M' <Aaron.Grodi@windstream.com>; 'Zingula, Lisa A' <Lisa.Zingula@windstream.com>; 'Halas, Frank' <Frank.Halas@windstream.com>

Cc: 'WCI Locate Desk' <WCI.Locate.Desk@windstream.com>

Subject: RE: CHPE Collocated Infrastructure Details_EM&CP_3 and 6 Dominion Telecom and Telergy

Mr. Halas hello again.

As soon as I sent the last message I learned that Elantic is now Windstream so I have one more package that we need to ask for your comment on (four packages currently, including the three linked at the bottom of this thread).

Links:

[CHPE-SUB-0108-00-Elantic Telecomm - Utility Matrix 8.23.2022.pdf](#)

[CHPE-SUB-0108-00-Dominion Telecom - Utility Matrix 8.23.2022.pdf](#)

[Package 6_Dominion Telecom_Co-Located Infrastructure_2022-09-14.pdf](#)

[Package 6_Telergy_Co-Located Infrastructure_2022-09-15.pdf](#)

Thank You,

Ben Cole

ben.cole@wsp.com

From: Cole, Benjamin

Sent: Friday, September 23, 2022 1:19 PM

To: Grodi, Aaron M <Aaron.Grodi@windstream.com>; Zingula, Lisa A <Lisa.Zingula@windstream.com>; Halas, Frank <Frank.Halas@windstream.com>

Cc: WCI Locate Desk <WCI.Locate.Desk@windstream.com>

Subject: RE: CHPE Collocated Infrastructure Details_EM&CP_3 and 6 Dominion Telecom and Telergy

Thank you Mr. Grodi.

Mr. Halas can you please review the information in the message and links below? Please let me know any comments/feedback on how the CHPE alignment should interact with Windstream infrastructure.

Thanks,

Ben Cole
(716) 289-1707
ben.cole@wsp.com

From: Grodi, Aaron M <Aaron.Grodi@windstream.com>
Sent: Friday, September 23, 2022 9:23 AM
To: Zingula, Lisa A <Lisa.Zingula@windstream.com>; Halas, Frank <Frank.Halas@windstream.com>
Cc: Cole, Benjamin <Ben.Cole@wsp.com>; WCI Locate Desk <WCI.Locate.Desk@windstream.com>
Subject: RE: CHPE Collocated Infrastructure Details_EM&CP_3 and 6 Dominion Telecom and Telergy

This would be Frank.

Aaron Grodi
Windstream CLEC Staff Manager
Midwest, Eastern, Western region
OSP Engineering & Construction
212 W. Lyons St | Rio, WI 53960
aaron.grodi@windstream.com

From: Zingula, Lisa A <Lisa.Zingula@windstream.com>
Sent: Friday, September 23, 2022 8:21 AM
To: Halas, Frank <Frank.Halas@windstream.com>; Grodi, Aaron M <Aaron.Grodi@windstream.com>
Cc: Cole, Benjamin <Ben.Cole@wsp.com>; WCI Locate Desk <WCI.Locate.Desk@windstream.com>
Subject: FW: CHPE Collocated Infrastructure Details_EM&CP_3 and 6 Dominion Telecom and Telergy

Good morning Mr. Halas & Mr. Grodi,
Can you please advise who the correct contact person for the below request.

Mr. Cole,
Damage Prevention (Locate Desk) is not involved with any type of work involving Windstream facilities and does not have information regarding Windstream facilities. My primary task is to provide requested mapping.

Thank You,
locate.desk@windstream.com



Sensitivity: Internal

From: Cole, Benjamin <Ben.Cole@wsp.com>
Sent: Thursday, September 22, 2022 8:27 PM
To: Halas, Frank <Frank.Halas@windstream.com>; Grodi, Aaron M <Aaron.Grodi@windstream.com>; Zingula, Lisa A <Lisa.Zingula@windstream.com>; Locate.desk@windsdtream.com
Subject: CHPE Collocated Infrastructure Details_EM&CP_3 and 6 Dominion Telecom and Telergy

Good Evening,

I'm writing on behalf of Transmission Developers Inc. ("TDI"), owner of the Champlain Hudson Power Express ("CHPE" or "Project") transmission line project. The purpose of this correspondence is to provide more detailed information related to how the CHPE project is designed to interact with your infrastructure and to solicit feedback from your company regarding the Project's alignment.

As you may recall from previous communications from Rick Chase at TDI, the CHPE is a fully permitted 339-mile underground and underwater high voltage direct current (HVDC) electric transmission line that will import up to 1,250 MW of renewable power from Canada and send it to the New York City metro area (see <https://chpexpress.com> for additional information).

At the links below please find design drawings of the proposed CHPE alignment where it involves your infrastructure within the Segment 6 Environmental Management and Construction Plan ("EM&CP") Package(s) 3 & 6.

Link: [CHPE-SUB-0108-00-Dominion Telecom - Utility Matrix 8.23.2022.pdf](#)

Link: [Package 6 Dominion Telecom Co-Located Infrastructure 2022-09-14.pdf](#)

Link: [Package 6 Telergy Co-Located Infrastructure 2022-09-15.pdf](#)

TDI will be submitting these plans to the New York State Public Service Commission ("PSC") for portions of the Project in the Towns of Wilton and Athens. This information is a follow-up to previous communications to you providing general project information and typical infrastructure crossing drawings.

Please review the linked information regarding the CHPE alignment relating to your infrastructure and provide concurrence with the Project's cable separation and alignment and any feedback to me (ben.cole@wsp.com) by October 7, 2022. It is important to TDI that the construction and operation of the CHPE project does not interfere with the continued operation of your infrastructure.

To the extent that the CHPE alignment interacts with your infrastructure within future Segment EM&CP submissions, we will provide you with similar drawings in advance of those filings. I look forward to coordinating with you as we finalize the design of the CHPE project.

Sincerely,

Ben Cole
WSP USA, on behalf of TDI

ben.cole@wsp.com

NOTICE: This communication and any attachments ("this message") may contain information which is privileged, confidential, proprietary or otherwise subject to restricted disclosure under applicable law. This message is for the sole use of the intended recipient(s). Any unauthorized use, disclosure, viewing, copying, alteration, dissemination or distribution of, or reliance on, this message is strictly prohibited. If you have received this message in error, or you are not an authorized or intended recipient, please notify the sender immediately by replying to this message, delete this message and all copies from your e-mail system and destroy any printed copies.

-LAEhHhHdzJzBITWfa4Hgs7pbKl

Cole, Benjamin

From: Cole, Benjamin
Sent: Friday, October 28, 2022 1:02 PM
To: Grodi, Aaron M; Halas, Frank
Subject: RE: CHPE Collocated Infrastructure Details_EM&CP_3 and 6 Dominion Telecom and Telergy

Hello,

Please see information at the links below. Does Windstream have comments on the CHPE alignment?

Thank You,

Ben Cole

ben.cole@wsp.com

From: Cole, Benjamin
Sent: Monday, October 10, 2022 4:41 PM
To: 'Grodi, Aaron M' <Aaron.Grodi@windstream.com>; 'Halas, Frank' <Frank.Halas@windstream.com>
Subject: RE: CHPE Collocated Infrastructure Details_EM&CP_3 and 6 Dominion Telecom and Telergy

Good Afternoon,

I'm checking in to see if you have comments on the drawings found at the links below.

I've consolidated the list in this most recent message:

[CHPE-SUB-0108-00-Elantic Telecomm - Utility Matrix 8.23.2022.pdf](#)
[CHPE-SUB-0108-00-Dominion Telecom - Utility Matrix 8.23.2022.pdf](#)
[Package 5A_Dominion_Co-Located Infrastructure_2022-08-22.pdf](#)
[Package 5A_Elantic_Co-Located Infrastructure_2022-08-22.pdf](#)
[Package 6_Dominion Telecom_Co-Located Infrastructure_2022-09-14.pdf](#)
[Package 6_Telergy_Co-Located Infrastructure_2022-09-15.pdf](#)

Thank You,

Ben Cole

ben.cole@wsp.com

From: Cole, Benjamin
Sent: Tuesday, September 27, 2022 11:28 AM
To: Grodi, Aaron M <Aaron.Grodi@windstream.com>; Halas, Frank <Frank.Halas@windstream.com>
Subject: RE: CHPE Collocated Infrastructure Details_EM&CP_3 and 6 Dominion Telecom and Telergy

Here is the link to the EM&CP Package 5A for Elantic utilities.

[Package 5A_Elantic_Co-Located Infrastructure_2022-08-22.pdf](#)

Thank You,

Ben Cole

ben.cole@wsp.com

From: Cole, Benjamin

Sent: Tuesday, September 27, 2022 11:22 AM

To: 'Grodi, Aaron M' <Aaron.Grodi@windstream.com>; 'Halas, Frank' <Frank.Halas@windstream.com>

Subject: RE: CHPE Collocated Infrastructure Details_EM&CP_3 and 6 Dominion Telecom and Telergy

Good Morning,

Please find at the link a plan/profile depicting EM&CP Package 5A for your review and comment.

[Package 5A_Dominion_Co-Located Infrastructure_2022-08-22.pdf](#)

Please provide any feedback to me that you may have on how the CHPE alignment interacts with your infrastructure.

Thank You,

Ben Cole

ben.cole@wsp.com

From: Cole, Benjamin

Sent: Friday, September 23, 2022 1:24 PM

To: 'Grodi, Aaron M' <Aaron.Grodi@windstream.com>; 'Zingula, Lisa A' <Lisa.Zingula@windstream.com>; 'Halas, Frank' <Frank.Halas@windstream.com>

Cc: 'WCI Locate Desk' <WCI.Locate.Desk@windstream.com>

Subject: RE: CHPE Collocated Infrastructure Details_EM&CP_3 and 6 Dominion Telecom and Telergy

Mr. Halas hello again.

As soon as I sent the last message I learned that Elantic is now Windstream so I have one more package that we need to ask for your comment on (four packages currently, including the three linked at the bottom of this thread).

Links:

[CHPE-SUB-0108-00-Elantic Telecomm - Utility Matrix 8.23.2022.pdf](#)

[CHPE-SUB-0108-00-Dominion Telecom - Utility Matrix 8.23.2022.pdf](#)

[Package 6_Dominion Telecom Co-Located Infrastructure_2022-09-14.pdf](#)

[Package 6_Telergy Co-Located Infrastructure_2022-09-15.pdf](#)

Thank You,

Ben Cole

ben.cole@wsp.com

From: Cole, Benjamin

Sent: Friday, September 23, 2022 1:19 PM

To: Grodi, Aaron M <Aaron.Grodi@windstream.com>; Zingula, Lisa A <Lisa.Zingula@windstream.com>; Halas, Frank <Frank.Halas@windstream.com>

Cc: WCI Locate Desk <WCI.Locate.Desk@windstream.com>

Subject: RE: CHPE Collocated Infrastructure Details_EM&CP_3 and 6 Dominion Telecom and Telergy

Thank you Mr. Grodi.

Mr. Halas can you please review the information in the message and links below? Please let me know any comments/feedback on how the CHPE alignment should interact with Windstream infrastructure.

Thanks,

Ben Cole

ben.cole@wsp.com

From: Grodi, Aaron M <Aaron.Grodi@windstream.com>

Sent: Friday, September 23, 2022 9:23 AM

To: Zingula, Lisa A <Lisa.Zingula@windstream.com>; Halas, Frank <Frank.Halas@windstream.com>

Cc: Cole, Benjamin <Ben.Cole@wsp.com>; WCI Locate Desk <WCI.Locate.Desk@windstream.com>

Subject: RE: CHPE Collocated Infrastructure Details_EM&CP_3 and 6 Dominion Telecom and Telergy

This would be Frank.

Aaron Grodi

Windstream CLEC Staff Manager

Midwest, Eastern, Western region

OSP Engineering & Construction

212 W. Lyons St | Rio, WI 53960

aaron.grodi@windstream.com

From: Zingula, Lisa A <Lisa.Zingula@windstream.com>

Sent: Friday, September 23, 2022 8:21 AM

To: Halas, Frank <Frank.Halas@windstream.com>; Grodi, Aaron M <Aaron.Grodi@windstream.com>

Cc: Cole, Benjamin <Ben.Cole@wsp.com>; WCI Locate Desk <WCI.Locate.Desk@windstream.com>

Subject: FW: CHPE Collocated Infrastructure Details_EM&CP_3 and 6 Dominion Telecom and Telergy

Good morning Mr. Halas & Mr. Grodi,

Can you please advise who the correct contact person for the below request.

Mr. Cole,

Damage Prevention (Locate Desk) is not involved with any type of work involving Windstream facilities and does not have information regarding Windstream facilities. My primary task is to provide requested mapping.

Thank You,

locate.desk@windstream.com



Sensitivity: Internal

From: Cole, Benjamin <Ben.Cole@wsp.com>

Sent: Thursday, September 22, 2022 8:27 PM

To: Halas, Frank <Frank.Halas@windstream.com>; Grodi, Aaron M <Aaron.Grodi@windstream.com>; Zingula, Lisa A <Lisa.Zingula@windstream.com>; Locate.desk@windstream.com

Subject: CHPE Collocated Infrastructure Details_EM&CP_3 and 6 Dominion Telecom and Telergy

Good Evening,

I'm writing on behalf of Transmission Developers Inc. ("TDI"), owner of the Champlain Hudson Power Express ("CHPE" or "Project") transmission line project. The purpose of this correspondence is to provide more detailed information related to how the CHPE project is designed to interact with your infrastructure and to solicit feedback from your company regarding the Project's alignment.

As you may recall from previous communications from Rick Chase at TDI, the CHPE is a fully permitted 339-mile underground and underwater high voltage direct current (HVDC) electric transmission line that will import up to 1,250 MW of renewable power from Canada and send it to the New York City metro area (see <https://chpexpress.com> for additional information).

At the links below please find design drawings of the proposed CHPE alignment where it involves your infrastructure within the Segment 6 Environmental Management and Construction Plan ("EM&CP") Package(s) 3 & 6.

Link: [CHPE-SUB-0108-00-Dominion Telecom - Utility Matrix 8.23.2022.pdf](#)

Link: [Package 6 Dominion Telecom Co-Located Infrastructure 2022-09-14.pdf](#)

Link: [Package 6 Telergy Co-Located Infrastructure 2022-09-15.pdf](#)

TDI will be submitting these plans to the New York State Public Service Commission ("PSC") for portions of the Project in the Towns of Wilton and Athens. This information is a follow-up to previous communications to you providing general project information and typical infrastructure crossing drawings.

Please review the linked information regarding the CHPE alignment relating to your infrastructure and provide concurrence with the Project's cable separation and alignment and any feedback to me (ben.cole@wsp.com) by October 7, 2022. It is important to TDI that the construction and operation of the CHPE project does not interfere with the continued operation of your infrastructure.

To the extent that the CHPE alignment interacts with your infrastructure within future Segment EM&CP submissions, we will provide you with similar drawings in advance of those filings. I look forward to coordinating with you as we finalize the design of the CHPE project.

Sincerely,

Ben Cole

WSP USA, on behalf of TDI

ben.cole@wsp.com

NOTICE: This communication and any attachments ("this message") may contain information which is privileged, confidential, proprietary or otherwise subject to restricted disclosure under applicable law. This message is for the sole use of the intended recipient(s). Any unauthorized use, disclosure, viewing, copying, alteration, dissemination or distribution of, or reliance on, this message is strictly prohibited. If you have received this message in error, or you are not an authorized or intended recipient, please notify the sender immediately by replying to this message, delete this message and all copies from your e-mail system and

destroy any printed copies.

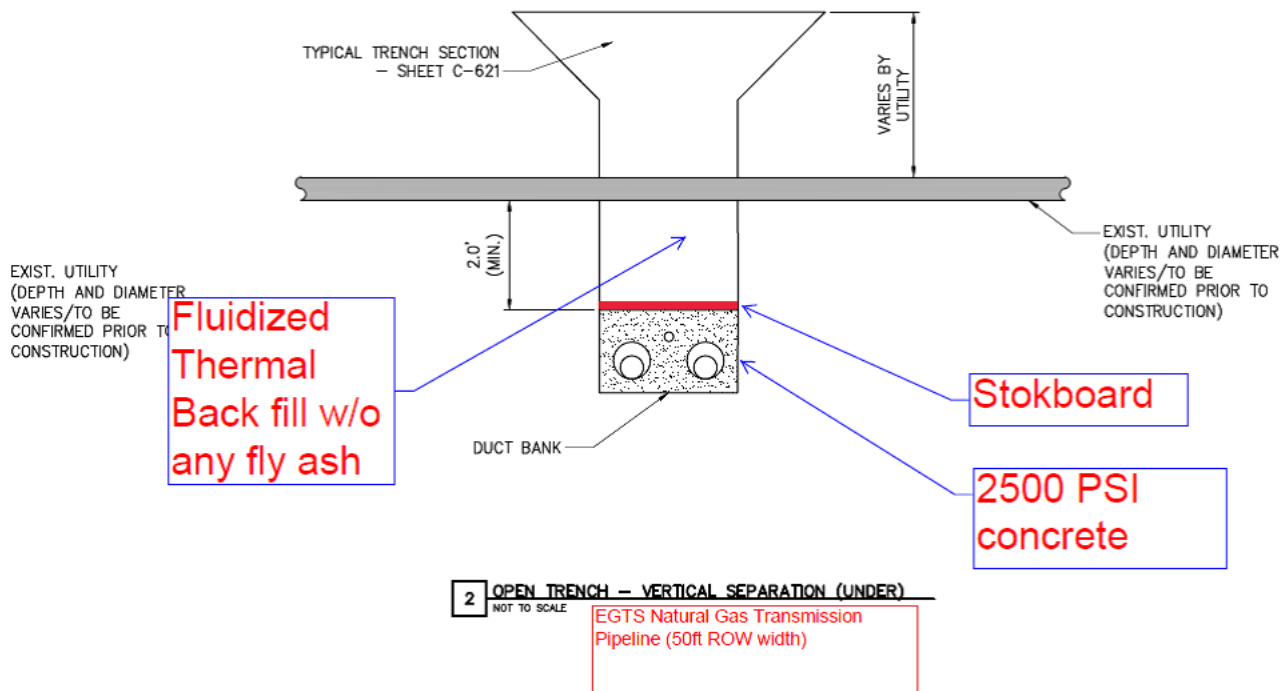
-LAEmHhHzdJzBITWfa4Hgs7pbKI

Cole, Benjamin

From: Warner, Brett (BHE GT&S) <Brett.Warner@bhegts.com>
Sent: Wednesday, November 9, 2022 9:34 AM
To: Cole, Benjamin
Cc: Schoonover, Hamilton (BHE GT&S); Hecox, Dale (BHE GT&S); Grady, Jason (BHE GT&S); Osterhout Jr, Robert (BHE GT&S); Rivardo, Richard (BHE GT&S); O'connor, Ryan (BHE GT&S)
Subject: RE: [EXTERNAL] FW: KWT - Overland: New Transmittal - WSP-DOM-TRNS-0139 - CHPE Package 5A Co-Located Infrastructure Matrix and Drawings - Dominion
Attachments: BHE_Guidelines for Construction ROW_rev_6_29_2022.pdf

Cole,

Here are a couple items I would like added/clarified on the plans. Refer to section 8.0 of the attached.



allel)	Owner	Ut
	Dominion	UG Utility (Fiber)
	Dominion / Eastern Gas Transmission and Storage	UG Utility (Gas)
	Dominion	UG Utility (Fiber)
	Dominion / Eastern Gas Transmission and Storage	UG Utility (Gas)
	Dominion Telecom	UG Utility (Fiber)

Thanks
Brett

Eastern Gas Transmission & Storage
Field Engineer Northern

brett.warner@bhegts.com

5094 Route 349

Westfield, PA 16950



Please note my new email: brett.warner@bhegts.com

From: Cole, Benjamin <Ben.Cole@wsp.com>

Sent: Tuesday, November 8, 2022 9:04 PM

To: Warner, Brett (BHE GT&S) <brett.warner@bhegts.com>

Subject: [EXTERNAL] FW: KWT - Overland: New Transmittal - WSP-DOM-TRNS-0139 - CHPE Package 5A Co-Located Infrastructure Matrix and Drawings - Dominion

You don't often get email from ben.cole@wsp.com. [Learn why this is important](#)

THIS MESSAGE IS FROM AN EXTERNAL SENDER.

Look closely at the **SENDER** address. Do not open **ATTACHMENTS** unless expected. Check for **INDICATORS** of phishing. Hover over **LINKS** before clicking. [Learn to spot a phishing message](#)

Good Evening Mr. Warner,

I'm checking in to see if you have comments or feedback on the information that was provided at the link below. I believe that link expired so the draft, in-progress plan/profile drawings are attached to this message. We're interested in any feedback that you may have on the CHPE alignment, as well as any requirements that the CHPE project must observe when crossing your gas transmission lines.

Thank You,

Ben Cole

ben.cole@wsp.com

From: CHPE-KWT@portal3.pbid.com <CHPE-KWT@portal3.pbid.com>

Sent: Tuesday, September 6, 2022 3:40 PM

To: Frank.Halas@windstream.com; Aaron.Grodi@windstream.com; Lisa.Zingula@windstream.com;

Locate.desk@windsdtream.com; brett.warner@bhegts.com; Christian, Marcus J. <Marcus.Christian@wsp.com>; Cole, Benjamin <Ben.Cole@wsp.com>; Yakaitis, Raymond A. <Raymond.Yakaitis@wsp.com>

Cc: CHPE-KWT@portal3.pbid.com

Subject: KWT - Overland: New Transmittal - WSP-DOM-TRNS-0139 - CHPE Package 5A Co-Located Infrastructure Matrix and Drawings - Dominion

Workflow Notification

A new Transmittal has been entered into the system.

Transmittal #: WSP-DOM-TRNS-0139

Subject: CHPE Package 5A Co-Located Infrastructure Matrix and Drawings - Dominion

ATTN: Frank Halas, Aaron Grodi, Lisa Zingula, Brett Warner, Locate desk

From: Ben Cole

Issue Purpose: For Your Information

Date Transmitted: 9/6/2022

Comments: Good Afternoon,

I'm writing on behalf of Transmission Developers Inc. ("TDI"), owner of the Champlain Hudson Power Express ("CHPE" or "Project") transmission line project. The purpose of this correspondence is to provide more detailed information related to how the CHPE project is designed to interact with your infrastructure and to solicit feedback from your company regarding the Project's alignment.

The CHPE is a fully permitted 339-mile underground and underwater high voltage direct current (HVDC) electric transmission line that will import up to 1,250 MW of renewable power from Canada and send it to the New York City metro area (see <https://chpexpress.com> for additional information).

At the enclosed link please find design drawings of the proposed CHPE alignment where it involves your infrastructure within the CHPE Package referenced in the title of this message.

TDI will be submitting these plans to the New York State Public Service Commission ("PSC") for approval prior to construction.

Please review the linked information regarding the CHPE alignment relating to your infrastructure and provide concurrence with the Project's cable separation and alignment and any feedback to ben.cole@wsp.com by September 16, 2022.

It is important to TDI that the construction and operation of the CHPE project does not interfere with the continued operation of your infrastructure.

To the extent that the CHPE alignment interacts with your infrastructure within future Segment EM&CP submissions, we will provide you with similar drawings in advance of those filings. I look forward to coordinating with you as we finalize the design of the CHPE project.

Thank You,

Ben Cole
WSP USA, on behalf of TDI

ben.cole@wsp.com

File Links (link will be active for 60 days):

File Name
Package 5A_Dominion_Co-Located Infrastructure_2022-08-22.pdf

CHPE SharePoint users can access the record and file(s) using the link below:

<https://chpe.pbid.com/KWT/layouts/15/DocSetHome.aspx?id=/KWT/Transmittals/CHPE%20Package%205A%20Co-Located%20Infrastructure%20Matrix%20and%20Drawings%20-%20Dominion&OpenIn=browser>

Disclaimer: The information contained in this email, including linked content, is considered confidential and may be privileged. It is intended only for the person or entity to which it is addressed and must not be sent or made accessible to other recipients. If you are not the intended recipient, you are hereby notified that any review, retransmission, dissemination or other use of, or taking any action in reliance upon this information is strictly prohibited. If you have received this email in error, kindly notify chpedoccontrol@portal3.pbid.com and delete the original message from your system.

Thank You.

NOTICE: This communication and any attachments ("this message") may contain information which is privileged, confidential, proprietary or otherwise subject to restricted disclosure under applicable law. This message is for the sole use of the intended recipient(s). Any unauthorized use, disclosure, viewing, copying, alteration, dissemination or distribution of, or reliance on, this message is strictly prohibited. If you have received this message in error, or you are not an authorized or intended recipient, please notify the sender immediately by replying to this message, delete this message and all copies from your e-mail system and destroy any printed copies.

-LAEmHhHzdJzBITWfa4Hgs7pbKl

This email, including attachments, may contain highly sensitive, confidential, proprietary or valuable information. It is intended only for the designated recipient(s) named above. Any unauthorized use, reproduction, forwarding or distribution of this transmission, including attachments, is prohibited. If you have received this communication in error, please immediately notify the sender and permanently delete any record of this transmission.

Cole, Benjamin

From: Cole, Benjamin
Sent: Friday, April 28, 2023 2:06 PM
To: KM Encroachments North; Ames, Mike; Werner, David; Yaniga, Colin; Sitts, Richard L (Rick); Melendez, Jose (Sloatsburg, NY); Ferguson Jr, Willard H (Butch); Bare, Gregory; Rotman, Adam D; Seastrand, Pete
Cc: Ayokunle Kafi; Stephen Rutkey; Michael Main; Nolan Mazur; Albers, David; Grassi, Laura
Subject: RE: [EXTERNAL] CHPE/Tennessee Gas Pipeline Crossings

Thank You David.

We're working on replies/updates.

Ben Cole

ben.cole@wsp.com

From: KM Encroachments North <KMEncroachmentsNorth@kindermorgan.com>
Sent: Friday, April 28, 2023 5:11 AM
To: Cole, Benjamin <Ben.Cole@wsp.com>; KM Encroachments North <KMEncroachmentsNorth@kindermorgan.com>; Ames, Mike <Michael_Ames@kindermorgan.com>; Werner, David <David_Werner@kindermorgan.com>; Yaniga, Colin <Colin_Yaniga@kindermorgan.com>; Sitts, Richard L (Rick) <Richard_Sitts@kindermorgan.com>; Melendez, Jose (Sloatsburg, NY) <MelendezJ@kindermorgan.com>; Ferguson Jr, Willard H (Butch) <Butch_Ferguson@kindermorgan.com>; Bare, Gregory <Gregory_Bare@kindermorgan.com>; Rotman, Adam D <Adam_Rotman@kindermorgan.com>; Seastrand, Pete <Pete_Seastrand@kindermorgan.com>
Cc: Ayokunle Kafi <Ayokunle.Kafi@transmissiondevelopers.com>; Stephen Rutkey <stephen.rutkey@transmissiondevelopers.com>; Michael Main <michael.main@transmissiondevelopers.com>; Nolan Mazur <nolan.mazur@transmissiondevelopers.com>; Albers, David <Dave.Albers@wsp.com>; Grassi, Laura <Laura.Grassi@wsp.com>
Subject: RE: [EXTERNAL] CHPE/Tennessee Gas Pipeline Crossings

Ben,
Once we complete our review and the design is acceptable, we will issue a letter with the list of our requirements. I have a few questions and comments based on the latest design.

- What will be the proposed voltage in the area of our pipelines?
- How will you be monitoring any voltage loss near our pipelines?
- Will there be one or two conduits crossing our pipeline and easement area? If there will be two then the drawings will need to be updated accordingly.

The attached encroachment information form will need to be filled out and returned with current crossing information and construction schedule.

The drawing package that you sent doesn't include the portion within the Hudson River in the Dobbs Ferry, NY Area. Do you have an update for this portion of the project? We have two pipelines that were proposed to be crossed in this area however, we have not seen any drawings or there has been no communication since scheduling the profile / soundings. If your company is not responsible for this portion of work can you please reach out to your client and inform them we haven't received these drawings for our review and approval?

David Wood
Project Manager – Ops SR I



8 Anngina Drive
Enfield, CT 06082

From: Cole, Benjamin <Ben.Cole@wsp.com>
Sent: Thursday, April 27, 2023 4:00 PM
To: KM Encroachments North <KMEncroachmentsNorth@kindermorgan.com>; Ames, Mike <Michael_Ames@kindermorgan.com>; Werner, David <David_Werner@kindermorgan.com>; Yaniga, Colin <Colin_Yaniga@kindermorgan.com>; Sitts, Richard L (Rick) <Richard_Sitts@kindermorgan.com>; Melendez, Jose (Sloatsburg, NY) <MelendezJ@kindermorgan.com>; Ferguson Jr, Willard H (Butch) <Butch_Ferguson@kindermorgan.com>; Bare, Gregory <Gregory_Bare@kindermorgan.com>; Rotman, Adam D <Adam_Rotman@kindermorgan.com>; Seastrand, Pete <Pete_Seastrand@kindermorgan.com>
Cc: Ayokunle Kafi <Ayokunle.Kafi@transmissiondevelopers.com>; Stephen Rutkey <stephen.rutkey@transmissiondevelopers.com>; Michael Main <michael.main@transmissiondevelopers.com>; Nolan Mazur <nolan.mazur@transmissiondevelopers.com>; Albers, David <Dave.Albers@wsp.com>; Grassi, Laura <Laura.Grassi@wsp.com>
Subject: RE: [EXTERNAL] CHPE/Tennessee Gas Pipeline Crossings

[This email message was received from the Internet and came from outside of Kinder Morgan.]

WARNING: EXTERNAL EMAIL: PROCEED WITH CAUTION.

Do not respond, click on links or open attachments unless you recognize the sender or know the content is safe.

Hello Mike,

Please see the following statement and request from the CHPE project below. Thank you.

=====

As you know, CHPE has been in ongoing dialogue with you regarding the design of CHPE's facilities in the proximity of your utility. You understand from CHPE that the design reflects your feedback. The designs in the proximity of your utility remain subject to your final comments and approval, which will be memorialized prior to the commencement of any construction activities in the vicinity of your utility.

CHPE kindly requests that you reply to this email as soon as possible confirming the statement above is accurate, or rephrase as you deem appropriate.

Thank you,
Ben Cole
Co-Located Infrastructure Lead

From: Cole, Benjamin

Sent: Wednesday, April 26, 2023 10:34 PM

To: KM Encroachments North <KMEncroachmentsNorth@kindermorgan.com>; Ames, Mike <Michael_Ames@kindermorgan.com>; Werner, David <David_Werner@kindermorgan.com>; Yaniga, Colin <Colin_Yaniga@kindermorgan.com>; Sitts, Richard L (Rick) <Richard_Sitts@kindermorgan.com>; Melendez, Jose (Sloatsburg, NY) <MelendezJ@kindermorgan.com>; Ferguson Jr, Willard H (Butch) <Butch_Ferguson@kindermorgan.com>; Bare, Gregory <Gregory_Bare@kindermorgan.com>; Rotman, Adam D <Adam_Rotman@kindermorgan.com>; Seastrand, Pete <Pete_Seastrand@kindermorgan.com>

Cc: Ayokunle Kafi <Ayokunle.Kafi@transmissiondevelopers.com>; Stephen Rutkey <stephen.rutkey@transmissiondevelopers.com>; Michael Main <michael.main@transmissiondevelopers.com>; Nolan Mazur <nolan.mazur@transmissiondevelopers.com>; Albers, David <Dave.Albers@wsp.com>; Grassi, Laura <Laura.Grassi@wsp.com>

Subject: RE: [EXTERNAL] CHPE/Tennessee Gas Pipeline Crossings

Hi Mike,

At the link please find the updated terrestrial plan/profile drawings, with a utility summation matrix on page 1. An image of the matrix is below. Please note that in the PDF, the 'C-157' and 'C-363' sheet callouts are bookmarked/will jump to the pages of interest.

[CHPE-SUB-0094.03-00-Kinder Morgan- CI Owner Package - 5A - 03-08-2023.pdf](#)

Segment(s)	General Location of Utility				Owner	Utility	Size/Voltage	Invert/Depth (feet)	Utility Length (feet)
	Station (Starting Point for Parallel and Crossing Point for Perpendicular)	Station (Ending Point for Parallel)	Drawing sheet(s) #	HDD Drawing (if any)					
Segment 8 (Package 5A)	50840+09		C-157	C-363	Kinder Morgan	UG Utility (Gas Transmission)			
	50840+70		C-157	C-363	Kinder Morgan	UG Utility (Gas Transmission)			
	50841+00		C-157	C-363	Kinder Morgan	UG Utility (Gas Transmission)			

Please see additional [info/responses](#) below.

We have an aggressive construction schedule. Please let me know asap if there is any more information needed for Kinder Morgan's review. Can you give an estimate of how long the review will take?

Thank You,

Ben Cole

ben.cole@wsp.com

From: Ames, Mike <Michael_Ames@kindermorgan.com>

Sent: Wednesday, June 1, 2022 9:57 AM

To: Werner, David <David_Werner@kindermorgan.com>; Cole, Benjamin <Ben.Cole@wsp.com>; Wood, David R (David)

<David_Wood@kindermorgan.com>

Cc: Yaniga, Colin <Colin_Yaniga@kindermorgan.com>; Ayokunle Kafi <Ayokunle.Kafi@transmissiondevelopers.com>;
Bob.Harrison@transmissiondevelopers.com; Rick Chase <rick.chase@transmissiondevelopers.com>; Michael Main
<michael.main@transmissiondevelopers.com>; Nolan Mazur <nolan.mazur@transmissiondevelopers.com>; Albers,
David <Dave.Albers@wsp.com>; Sitts, Richard L (Rick) <Richard_Sitts@kindermorgan.com>; Melendez, Jose (Sloatsburg,
NY) <MelendezJ@kindermorgan.com>; Ames, Mike <Michael_Ames@kindermorgan.com>; Ferguson Jr, Willard H
(Butch) <Butch_Ferguson@kindermorgan.com>; Bare, Gregory <Gregory_Bare@kindermorgan.com>; Rotman, Adam D
<Adam_Rotman@kindermorgan.com>; Seastrand, Pete <Pete_Seastrand@kindermorgan.com>

Subject: RE: [EXTERNAL] CHPE/Tennessee Gas Pipeline Crossings

Ben,

Please see below for a list of requirements/clarifications needed from Kinder Morgan for the CHPE project. To make things easier on everyone we can separate the crossings into 2 separate reviews. Below are some of the basic requirements for each crossing... we will need to conduct a complete review and draft a crossing agreement for both over land and water crossings. Please feel free to copy the text below and answer questions in red text.

Over Land Portion.

-
-
-
-
-
-

Water Crossing Portion.

-
-
-
-
-
-
-

061
on.

is?

Thank You,

Mike Ames

197 Tennessee Rd., Coudersport, PA 16915



Delivering Energy to Improve Lives

From: Werner, David <David_Werner@kindermorgan.com>
Sent: Friday, May 20, 2022 6:44 AM
To: Ames, Mike <Michael_Ames@kindermorgan.com>; Cole, Benjamin <Ben.Cole@wsp.com>; Wood, David R (David) <David_Wood@kindermorgan.com>
Cc: Yaniga, Colin <Colin_Yaniga@kindermorgan.com>; Ayokunle Kafi <Ayokunle.Kafi@transmissiondevelopers.com>; Bob.Harrison@transmissiondevelopers.com; Rick Chase <rick.chase@transmissiondevelopers.com>; Michael Main <michael.main@transmissiondevelopers.com>; Nolan Mazur <nolan.mazur@transmissiondevelopers.com>; Albers, David <Dave.Albers@wsp.com>; Sitts, Richard L (Rick) <Richard_Sitts@kindermorgan.com>; Melendez, Jose (Sloatsburg, NY) <MelendezJ@kindermorgan.com>
Subject: RE: [EXTERNAL] CHPE/Tennessee Gas Pipeline Crossings

Adding Jose since the underwater crossing will be in his area.

David Werner

Damage Prevention Supervisor

197 Tennessee Rd. Coudersport, PA 16915



Tennessee Gas Pipeline
Company, L.L.C.
a Kinder Morgan company



Stagecoach Pipeline &
Storage Company LLC
a Kinder Morgan company

From: Ames, Mike <Michael_Ames@kindermorgan.com>
Sent: Thursday, May 19, 2022 4:06 PM
To: Cole, Benjamin <Ben.Cole@wsp.com>; Wood, David R (David) <David_Wood@kindermorgan.com>
Cc: Yaniga, Colin <Colin_Yaniga@kindermorgan.com>; Ayokunle Kafi <Ayokunle.Kafi@transmissiondevelopers.com>; Bob.Harrison@transmissiondevelopers.com; Rick Chase <rick.chase@transmissiondevelopers.com>; Michael Main <michael.main@transmissiondevelopers.com>; Nolan Mazur <nolan.mazur@transmissiondevelopers.com>; Albers, David <Dave.Albers@wsp.com>; Werner, David <David_Werner@kindermorgan.com>; Sitts, Richard L (Rick) <Richard_Sitts@kindermorgan.com>; Ames, Mike <Michael_Ames@kindermorgan.com>
Subject: RE: [EXTERNAL] CHPE/Tennessee Gas Pipeline Crossings

Ben,

Your contractor that will be digging the test pits would place a One Call (811) and that will initiate the process for coordinating the digs under supervision of KM's Damage Prevention.

Thank You,

Mike Ames
Agent – Right of Way II

197 Tennessee Rd., Coudersport, PA 16915



Delivering Energy to Improve Lives

From: Cole, Benjamin <Ben.Cole@wsp.com>

Sent: Thursday, May 19, 2022 11:59 AM

To: Wood, David R (David) <David_Wood@kindermorgan.com>; Ames, Mike <Michael_Ames@kindermorgan.com>

Cc: Yaniga, Colin <Colin_Yaniga@kindermorgan.com>; Ayokunle Kafi <Ayokunle.Kafi@transmissiondevelopers.com>; Bob.Harrison@transmissiondevelopers.com; Rick Chase <rick.chase@transmissiondevelopers.com>; Michael Main <michael.main@transmissiondevelopers.com>; Nolan Mazur <nolan.mazur@transmissiondevelopers.com>; Albers, David <Dave.Albers@wsp.com>

Subject: RE: [EXTERNAL] CHPE/Tennessee Gas Pipeline Crossings

[This email message was received from the Internet and came from outside of Kinder Morgan.]

WARNING: EXTERNAL EMAIL: PROCEED WITH CAUTION.

Do not respond, click on links or open attachments unless you recognize the sender or know the content is safe.

Hi David, just so it's clear for me – we need current, as-measured pipeline depth data, correct? (not from as-built/other historic data).

Is there a process for CHPE to follow to gain approval for potholing outside of the communications that have happened to date?

Will a Kinder Morgan rep want to be on site/is there anyone else we need to coordinate with? (sorry if that's already been covered)

Thank You,

Ben Cole

ben.cole@wsp.com

From: Wood, David R (David) <David_Wood@kindermorgan.com>

Sent: Wednesday, May 18, 2022 1:44 PM

To: Ames, Mike <Michael_Ames@kindermorgan.com>; Cole, Benjamin <Ben.Cole@wsp.com>

Cc: Yaniga, Colin <Colin_Yaniga@kindermorgan.com>; Ayokunle Kafi <Ayokunle.Kafi@transmissiondevelopers.com>;

Bob.Harrison@transmissiondevelopers.com; Rick Chase <rick.chase@transmissiondevelopers.com>; Michael Main <michael.main@transmissiondevelopers.com>; Nolan Mazur <nolan.mazur@transmissiondevelopers.com>; Albers, David <Dave.Albers@wsp.com>

Subject: RE: [EXTERNAL] CHPE/Tennessee Gas Pipeline Crossings

Ben,

David Wood
Project Manager – Ops SR I



8 Anngina Drive
Enfield, CT 06082
860-763-6005 Office
413-530-7117 Cell

From: Ames, Mike <Michael_Ames@kindermorgan.com>

Sent: Wednesday, May 18, 2022 8:07 AM

To: Cole, Benjamin <Ben.Cole@wsp.com>

Cc: Wood, David R (David) <David_Wood@kindermorgan.com>; Yaniga, Colin <Colin_Yaniga@kindermorgan.com>; Ayokunle Kafi <Ayokunle.Kafi@transmissiondevelopers.com>; Bob.Harrison@transmissiondevelopers.com; Rick Chase <rick.chase@transmissiondevelopers.com>; Michael Main <michael.main@transmissiondevelopers.com>; Nolan Mazur <nolan.mazur@transmissiondevelopers.com>; Albers, David <Dave.Albers@wsp.com>; Ames, Mike <Michael_Ames@kindermorgan.com>

Subject: RE: [EXTERNAL] CHPE/Tennessee Gas Pipeline Crossings

Ben,

Thank you for providing this information, once we receive the underwater crossing drawings we should be able to move forward with our review.

David Wood,

Do you have any comments on what has been provided thus far?

Thank You,

Mike Ames
Agent – Right of Way II

197 Tennessee Rd., Coudersport, PA 16915



From: Cole, Benjamin <Ben.Cole@wsp.com>
Sent: Friday, May 13, 2022 1:01 PM
To: Ames, Mike <Michael_Ames@kindermorgan.com>
Cc: Wood, David R (David) <David_Wood@kindermorgan.com>; Yaniga, Colin <Colin_Yaniga@kindermorgan.com>; Ayokunle Kafi <Ayokunle.Kafi@transmissiondevelopers.com>; Bob.Harrison@transmissiondevelopers.com; Rick Chase <rick.chase@transmissiondevelopers.com>; Michael Main <michael.main@transmissiondevelopers.com>; Nolan Mazur <nolan.mazur@transmissiondevelopers.com>; Albers, David <Dave.Albers@wsp.com>
Subject: RE: [EXTERNAL] CHPE/Tennessee Gas Pipeline Crossings

[This email message was received from the Internet and came from outside of Kinder Morgan.]

WARNING: EXTERNAL EMAIL: PROCEED WITH CAUTION.

Do not respond, click on links or open attachments unless you recognize the sender or know the content is safe.

Hi Mike,

I'm supporting Rick Chase and TDI with utility crossings, and am finally getting back to you with some specifics for the Underground location.

Please see attached Encroachment Information Form for the Underground crossing, as well as a draft plan of the crossing location.

Information regarding the Underwater crossing will follow in the near future.

We appreciate your help. Please don't hesitate to let me know any questions or comments.

Thank You,

Ben Cole

ben.cole@wsp.com

From: Ames, Mike <Michael_Ames@kindermorgan.com>
Sent: Tuesday, March 15, 2022 3:54 PM
To: Rick Chase <Rick.Chase@transmissiondevelopers.com>
Cc: Wood, David R (David) <David_Wood@kindermorgan.com>; Yaniga, Colin <Colin_Yaniga@kindermorgan.com>; Ames, Mike <Michael_Ames@kindermorgan.com>
Subject: [EXTERNAL] CHPE/Tennessee Gas Pipeline Crossings

Rick,

I wanted to follow up with you regarding the CHPE project and the Tennessee Gas pipeline crossings. From our initial review of the project, we wanted to relay the following list of questions/concerns:

These are some of the concerns that were discussed in our refresher call for the project. If you can, please provide answers to the above. I have attached an Encroachment Information Form to fill out with the crossing locations, details, etc. and an updated KM Developer Handbook as reference for working near Tennessee's pipelines/easements. Please do not hesitate to reply all to this e-mail with any questions.

David/Colin – feel free to add anything I may have missed.

Thank You,

Mike Ames
Agent – Right of Way II

197 Tennessee Rd., Coudersport, PA 16915



From: Rick Chase <Rick.Chase@transmissiondevelopers.com>
Sent: Friday, February 4, 2022 10:32 AM
To: Ames, Mike <Michael_Ames@kindermorgan.com>
Cc: Wood, David R (David) <David_Wood@kindermorgan.com>
Subject: RE: CHPE/Tennessee Gas Pipeline Crossings

[This email message was received from the Internet and came from outside of Kinder Morgan.]

WARNING: EXTERNAL EMAIL: PROCEED WITH CAUTION.

Do not respond, click on links or open attachments unless you recognize the sender or know the content is safe.

Thanks so much for your response.

I look forward to working with you and David.

Rick Chase

Rick.chase@transmissiondevelopers.com

From: Ames, Mike <Michael_Ames@kindermorgan.com>

Sent: Friday, February 4, 2022 9:59 AM

To: Rick Chase <Rick.Chase@transmissiondevelopers.com>

Cc: Ames, Mike <Michael_Ames@kindermorgan.com>; Wood, David R (David) <David_Wood@kindermorgan.com>

Subject: CHPE/Tennessee Gas Pipeline Crossings

Mr. Chase,

I wanted to reach out regarding your recent e-mail to Terence Woofe with Kinder Morgan/TGP. I will be your contact with Right of Way for Kinder Morgan/TGP moving forward and I will work with you to complete the Encroachment process. I have also cc'd David Wood, our PM/Engineer for this project that you have worked with in the past if you have any questions. We will discuss and bring everyone up to speed internally next week hopefully and I will follow up with you regarding the next steps. Please do not hesitate to call or e-mail with any questions in the meantime.

Thank You,

Mike Ames

Agent – Right of Way II

197 Tennessee Rd., Coudersport, PA 16915

KINDER MORGAN

Delivering Energy to Improve Lives

NOTICE: This communication and any attachments ("this message") may contain information which is privileged, confidential, proprietary or otherwise subject to restricted disclosure under applicable law. This message is for the sole use of the intended recipient(s). Any unauthorized use, disclosure, viewing, copying, alteration, dissemination or distribution of, or reliance on, this message is strictly prohibited. If you have received this message in error, or you are not an authorized or intended recipient, please notify the sender immediately by replying to this message, delete this message and all copies from your e-mail system and destroy any printed copies.

-LAEmHhHzdJzBITWfa4Hgs7pbKI

Cole, Benjamin

From: Ames, Mike <Michael_Ames@kindermorgan.com>
Sent: Wednesday, June 1, 2022 9:57 AM
To: Werner, David; Cole, Benjamin; Wood, David R (David)
Cc: Yaniga, Colin; Ayokunle Kafi; Bob.Harrison@transmissiondevelopers.com; Rick Chase; Michael Main; Nolan Mazur; Albers, David; Sitts, Richard L (Rick); Melendez, Jose (Sloatsburg, NY); Ames, Mike; Ferguson Jr, Willard H (Butch); Bare, Gregory; Rotman, Adam D; Seastrand, Pete
Subject: RE: [EXTERNAL] CHPE/Tennessee Gas Pipeline Crossings

Ben,

Please see below for a list of requirements/clarifications needed from Kinder Morgan for the CHPE project. To make things easier on everyone we can separate the crossings into 2 separate reviews. Below are some of the basic requirements for each crossing... we will need to conduct a complete review and draft a crossing agreement for both over land and water crossings. Please feel free to copy the text below and answer questions in red text.

Thank You,

Mike Ames
Agent – Right of Way II

197 Tennessee Rd., Coudersport, PA 16915

KINDER  MORGAN
Delivering Energy to Improve Lives

From: Werner, David <David_Werner@kindermorgan.com>
Sent: Friday, May 20, 2022 6:44 AM
To: Ames, Mike <Michael_Ames@kindermorgan.com>; Cole, Benjamin <Ben.Cole@wsp.com>; Wood, David R (David) <David_Wood@kindermorgan.com>
Cc: Yaniga, Colin <Colin_Yaniga@kindermorgan.com>; Ayokunle Kafi <Ayokunle.Kafi@transmissiondevelopers.com>; Bob.Harrison@transmissiondevelopers.com; Rick Chase <rick.chase@transmissiondevelopers.com>; Michael Main <michael.main@transmissiondevelopers.com>; Nolan Mazur <nolan.mazur@transmissiondevelopers.com>; Albers, David <Dave.Albers@wsp.com>; Sitts, Richard L (Rick) <Richard_Sitts@kindermorgan.com>; Melendez, Jose (Sloatsburg, NY) <MelendezJ@kindermorgan.com>
Subject: RE: [EXTERNAL] CHPE/Tennessee Gas Pipeline Crossings

Adding Jose since the underwater crossing will be in his area.

David Werner
Damage Prevention Supervisor

197 Tennessee Rd. Coudersport, PA 16915



From: Ames, Mike <Michael_Ames@kindermorgan.com>
Sent: Thursday, May 19, 2022 4:06 PM
To: Cole, Benjamin <Ben.Cole@wsp.com>; Wood, David R (David) <David_Wood@kindermorgan.com>
Cc: Yaniga, Colin <Colin_Yaniga@kindermorgan.com>; Ayokunle Kafi <Ayokunle.Kafi@transmissiondevelopers.com>; Bob.Harrison@transmissiondevelopers.com; Rick Chase <rick.chase@transmissiondevelopers.com>; Michael Main <michael.main@transmissiondevelopers.com>; Nolan Mazur <nolan.mazur@transmissiondevelopers.com>; Albers, David <Dave.Albers@wsp.com>; Werner, David <David_Werner@kindermorgan.com>; Sitts, Richard L (Rick) <Richard_Sitts@kindermorgan.com>; Ames, Mike <Michael_Ames@kindermorgan.com>
Subject: RE: [EXTERNAL] CHPE/Tennessee Gas Pipeline Crossings

Ben,

Your contractor that will be digging the test pits would place a One Call (811) and that will initiate the process for coordinating the digs under supervision of KM's Damage Prevention.

Thank You,

Mike Ames
Agent – Right of Way II

197 Tennessee Rd., Coudersport, PA 16915



Delivering Energy to Improve Lives

From: Cole, Benjamin <Ben.Cole@wsp.com>
Sent: Thursday, May 19, 2022 11:59 AM
To: Wood, David R (David) <David_Wood@kindermorgan.com>; Ames, Mike <Michael_Ames@kindermorgan.com>
Cc: Yaniga, Colin <Colin_Yaniga@kindermorgan.com>; Ayokunle Kafi <Ayokunle.Kafi@transmissiondevelopers.com>; Bob.Harrison@transmissiondevelopers.com; Rick Chase <rick.chase@transmissiondevelopers.com>; Michael Main <michael.main@transmissiondevelopers.com>; Nolan Mazur <nolan.mazur@transmissiondevelopers.com>; Albers, David <Dave.Albers@wsp.com>
Subject: RE: [EXTERNAL] CHPE/Tennessee Gas Pipeline Crossings

[This email message was received from the Internet and came from outside of Kinder Morgan.]

WARNING: EXTERNAL EMAIL: PROCEED WITH CAUTION.

Do not respond, click on links or open attachments unless you recognize the sender or know the content is safe.

Hi David, just so it's clear for me – we need current, as-measured pipeline depth data, correct? (not from as-built/other historic data).

Is there a process for CHPE to follow to gain approval for potholing outside of the communications that have happened to date?

Will a Kinder Morgan rep want to be on site/is there anyone else we need to coordinate with? (sorry if that's already been covered)

Thank You,

Ben Cole

ben.cole@wsp.com

From: Wood, David R (David) <David_Wood@kindermorgan.com>
Sent: Wednesday, May 18, 2022 1:44 PM
To: Ames, Mike <Michael_Ames@kindermorgan.com>; Cole, Benjamin <Ben.Cole@wsp.com>
Cc: Yaniga, Colin <Colin_Yaniga@kindermorgan.com>; Ayokunle Kafi <Ayokunle.Kafi@transmissiondevelopers.com>; Bob.Harrison@transmissiondevelopers.com; Rick Chase <rick.chase@transmissiondevelopers.com>; Michael Main <michael.main@transmissiondevelopers.com>; Nolan Mazur <nolan.mazur@transmissiondevelopers.com>; Albers, David <Dave.Albers@wsp.com>
Subject: RE: [EXTERNAL] CHPE/Tennessee Gas Pipeline Crossings

Ben,

Once you have the depth of the pipelines please update the drawings with the information and resend to us for our review.

David Wood
Project Manager – Ops SR I



8 Anngina Drive
Enfield, CT 06082

From: Ames, Mike <Michael_Ames@kindermorgan.com>
Sent: Wednesday, May 18, 2022 8:07 AM
To: Cole, Benjamin <Ben.Cole@wsp.com>
Cc: Wood, David R (David) <David_Wood@kindermorgan.com>; Yaniga, Colin <Colin_Yaniga@kindermorgan.com>; Ayokunle Kafi <Ayokunle.Kafi@transmissiondevelopers.com>; Bob.Harrison@transmissiondevelopers.com; Rick Chase <rick.chase@transmissiondevelopers.com>; Michael Main <michael.main@transmissiondevelopers.com>; Nolan Mazur <nolan.mazur@transmissiondevelopers.com>; Albers, David <Dave.Albers@wsp.com>; Ames, Mike <Michael_Ames@kindermorgan.com>
Subject: RE: [EXTERNAL] CHPE/Tennessee Gas Pipeline Crossings

Ben,

Thank you for providing this information, once we receive the underwater crossing drawings we should be able to move forward with our review.

David Wood,

Do you have any comments on what has been provided thus far?

Thank You,

Mike Ames
Agent – Right of Way II
O: 814.274.3135
C: 607.382.1702
197 Tennessee Rd., Coudersport, PA 16915



From: Cole, Benjamin <Ben.Cole@wsp.com>
Sent: Friday, May 13, 2022 1:01 PM
To: Ames, Mike <Michael_Ames@kindermorgan.com>
Cc: Wood, David R (David) <David_Wood@kindermorgan.com>; Yaniga, Colin <Colin_Yaniga@kindermorgan.com>; Ayokunle Kafi <Ayokunle.Kafi@transmissiondevelopers.com>; Bob.Harrison@transmissiondevelopers.com; Rick Chase

<rick.chase@transmissiondevelopers.com>; Michael Main <michael.main@transmissiondevelopers.com>; Nolan Mazur <nolan.mazur@transmissiondevelopers.com>; Albers, David <Dave.Albers@wsp.com>

Subject: RE: [EXTERNAL] CHPE/Tennessee Gas Pipeline Crossings

[This email message was received from the Internet and came from outside of Kinder Morgan.]

WARNING: EXTERNAL EMAIL: PROCEED WITH CAUTION.

Do not respond, click on links or open attachments unless you recognize the sender or know the content is safe.

Hi Mike,

I'm supporting Rick Chase and TDI with utility crossings, and am finally getting back to you with some specifics for the Underground location.

Please see attached Encroachment Information Form for the Underground crossing, as well as a draft plan of the crossing location.

Information regarding the Underwater crossing will follow in the near future.

We appreciate your help. Please don't hesitate to let me know any questions or comments.

Thank You,

Ben Cole

ben.cole@wsp.com

From: Ames, Mike <Michael_Ames@kindermorgan.com>

Sent: Tuesday, March 15, 2022 3:54 PM

To: Rick Chase <Rick.Chase@transmissiondevelopers.com>

Cc: Wood, David R (David) <David_Wood@kindermorgan.com>; Yaniga, Colin <Colin_Yaniga@kindermorgan.com>;

Ames, Mike <Michael_Ames@kindermorgan.com>

Subject: [EXTERNAL] CHPE/Tennessee Gas Pipeline Crossings

Rick,

I wanted to follow up with you regarding the CHPE project and the Tennessee Gas pipeline crossings. From our initial review of the project, we wanted to relay the following list of questions/concerns:

a.

-
-
-

These are some of the concerns that were discussed in our refresher call for the project. If you can, please provide answers to the above. I have attached an Encroachment Information Form to fill out with the crossing locations, details, etc. and an updated KM Developer Handbook as reference for working near Tennessee's pipelines/easements. Please do not hesitate to reply all to this e-mail with any questions.

David/Colin – feel free to add anything I may have missed.

Thank You,

Mike Ames
Agent – Right of Way II

197 Tennessee Rd., Coudersport, PA 16915



From: Rick Chase <Rick.Chase@transmissiondevelopers.com>
Sent: Friday, February 4, 2022 10:32 AM
To: Ames, Mike <Michael_Ames@kindermorgan.com>
Cc: Wood, David R (David) <David_Wood@kindermorgan.com>
Subject: RE: CHPE/Tennessee Gas Pipeline Crossings

[This email message was received from the Internet and came from outside of Kinder Morgan.]

WARNING: EXTERNAL EMAIL: PROCEED WITH CAUTION.

Do not respond, click on links or open attachments unless you recognize the sender or know the content is safe.

Thanks so much for your response.

I look forward to working with you and David.

Rick Chase

Rick.chase@transmissiondevelopers.com

From: Ames, Mike <Michael_Ames@kindermorgan.com>
Sent: Friday, February 4, 2022 9:59 AM
To: Rick Chase <Rick.Chase@transmissiondevelopers.com>
Cc: Ames, Mike <Michael_Ames@kindermorgan.com>; Wood, David R (David) <David_Wood@kindermorgan.com>
Subject: CHPE/Tennessee Gas Pipeline Crossings

Mr. Chase,

I wanted to reach out regarding your recent e-mail to Terence Woofe with Kinder Morgan/TGP. I will be your contact with Right of Way for Kinder Morgan/TGP moving forward and I will work with you to complete the Encroachment process. I have also cc'd David Wood, our PM/Engineer for this project that you have worked with in the past if you have any questions. We will discuss and bring everyone up to speed internally next week hopefully and I will follow up with you regarding the next steps. Please do not hesitate to call or e-mail with any questions in the meantime.

Thank You,

Mike Ames

Agent – Right of Way II

197 Tennessee Rd., Coudersport, PA 16915

KINDER MORGAN

Delivering Energy to Improve Lives

NOTICE: This communication and any attachments ("this message") may contain information which is privileged, confidential, proprietary or otherwise subject to restricted disclosure under applicable law. This message is for the sole use of the intended recipient(s). Any unauthorized use, disclosure, viewing, copying, alteration, dissemination or distribution of, or reliance on, this message is strictly prohibited. If you have received this message in error, or you are not an authorized or intended recipient, please notify the sender immediately by replying to this message, delete this message and all copies from your e-mail system and destroy any printed copies.

-LAEmHhHzdJzBITWfa4Hgs7pbKl

Cole, Benjamin

From: Cole, Benjamin
Sent: Wednesday, December 7, 2022 12:30 PM
To: Bridget.Grabner@nationalgrid.com
Cc: Timothy.Dzimian@nationalgrid.com; Aspinall, Pamela; Rick Chase; Grassi, Laura
Subject: CHPE National Grid PTR Application for Packages 5A and 5B

Hi Bridget,

The link below directs to a PTR for Champlain Hudson Power Express Packages 5A and 5B. This segment of the transmission line includes the Towns of Rotterdam, Guilderland, New Scotland, and Bethlehem, in Schenectady and Albany counties, NY. This application incorporates the items on the Land Use Application Checklist and includes in-progress plans and profiles for interactions with National Grid overhead and underground electric and underground gas infrastructure. As we've discussed, your review of these in-progress plans will ensure proper interactions with your infrastructure and will give CHPE the opportunity to confirm that the design provides adequate protections, and allows for necessary design changes based on your review prior to plans being submitted to the Public Service Commission for approval.

Link: [Segments 8 and 9 Packages 5A and 5B](#) Please note this link expires in 60 days.

We are currently completing aeriels for four locations that were recently added to this stretch and will upload those as soon as they are finalized (today - tomorrow). Also, the designers are revising the matrices that are found at the beginning of each plan/profile set to make it easier for reviewers to locate the interactions in the drawing sets. We'll upload those as soon as available, but, in the interest of expediency, want to make the plans available to National Grid now.

Thank you for your attention to this matter, and please let me know if anything else is needed.

Ben Cole

ben.cole@wsp.com

Cole, Benjamin

From: Cole, Benjamin
Sent: Wednesday, March 29, 2023 9:47 AM
To: Dzimian, Timothy S.; Schlegel, Jennifer; Aspinall, Pamela; Graber, Bridget
Cc: Weatherwax, Kim; Kogler, Mark; Islam, Mohammad A.; Domino, Mark F.; Hill, William D.; Mathias, Meredith; Rick Chase; Buczek, Jason D.; Conklin, Kevin J.; Ascioti, Demetrio; Fowles, Matthew; Daniel.Keener; Tylor.Bottorff; Justine.Rojas; Hanford, Madeline; Grassi, Laura; Mark.Swallow; Kelli Capka (KC Engineering-NYC); Kern, Michael D.; Michael Main; Fonzi, Joseph J; McNally, Jeffrey; Jasinski, Gregory T.; LaGrave, Barret; Ayokunle Kafi; Stephen Rutkey; Nolan Mazur; Grassi, Laura; Neumaier, Steve; Mehta, Ruju; Shute, Nicole
Subject: RE: CHPE Bi-Weekly Check In

Good Morning,

The updated Package 5A Plan and Profile (dated 03-07-23; came in late last week) is available at the following link:
[Segments 8 and 9 Packages 5A and 5B Plan and Profile](#)

Thanks,

Ben Cole

ben.cole@wsp.com

From: Cole, Benjamin
Sent: Tuesday, March 28, 2023 2:37 PM
To: Dzimian, Timothy S. <Timothy.Dzimian@nationalgrid.com>; Schlegel, Jennifer <Jennifer.Schlegel@nationalgrid.com>; Aspinall, Pamela <Pamela.Aspinall@nationalgrid.com>; Graber, Bridget <Bridget.Graber@nationalgrid.com>
Cc: Weatherwax, Kim <Kim.Weatherwax@nationalgrid.com>; Kogler, Mark <Mark.Kogler@nationalgrid.com>; Islam, Mohammad A. <Mohammad.Islam@nationalgrid.com>; Domino, Mark F. <Mark.Domino@nationalgrid.com>; Hill, William D. <william.hill@nationalgrid.com>; Mathias, Meredith <Meredithe.Mathias@nationalgrid.com>; Rick Chase <Rick.Chase@transmissiondevelopers.com>; Buczek, Jason D. <Jason.Buczek@nationalgrid.com>; Conklin, Kevin J. <Kevin.Conklin@nationalgrid.com>; Ascioti, Demetrio <Demetrio.Ascioti@nationalgrid.com>; Fowles, Matthew <Matthew.Fowles@nationalgrid.com>; Daniel.Keener <Daniel.Keener@kiewit.com>; Tylor.Bottorff <Tylor.Bottorff@kiewit.com>; Justine.Rojas <Justine.Rojas@Kiewit.com>; Hanford, Madeline <Maddy.Hanford@wsp.com>; Grassi, Laura <Laura.Grassi@wsp.com>; Mark.Swallow <Mark.Swallow@kiewit.com>; Kelli Capka (KC Engineering-NYC) <kcapka@kcepc.com>; Kern, Michael D. <Michael.Kern@nationalgrid.com>; Michael Main <Michael.Main@transmissiondevelopers.com>; Fonzi, Joseph J <J.Fonzi@wsp.com>; McNally, Jeffrey <Jeffrey.McNally@wsp.com>; Jasinski, Gregory T. <G.Jasinski@wsp.com>; LaGrave, Barret <Barret.LaGrave@wsp.com>; Ayokunle Kafi <ayokunle.kafi@transmissiondevelopers.com>; Stephen Rutkey <stephen.rutkey@transmissiondevelopers.com>; Nolan Mazur <nolan.mazur@transmissiondevelopers.com>; Grassi, Laura <Laura.Grassi@wsp.com>; Neumaier, Steve <Steve.Neumaier@wsp.com>; Mehta, Ruju <ruju.mehta@wsp.com>; Shute, Nicole <Nicole.Shute@wsp.com>
Subject: RE: CHPE Bi-Weekly Check In

Hi Tim, All,

At the following link, as well as attached to this message, is a figure depicting the planned crossing of the CHPE alignment at this location, where National Grid infrastructure is present.

[4A SR146A Crossing_032823](#)

Looking forward to speaking with the team about this tomorrow.

Thanks,

Ben Cole

ben.cole@wsp.com

From: Cole, Benjamin

Sent: Tuesday, March 28, 2023 9:43 AM

To: Dzimian, Timothy S. <Timothy.Dzimian@nationalgrid.com>; Schlegel, Jennifer

<Jennifer.Schlegel@nationalgrid.com>; Aspinall, Pamela <Pamela.Aspinall@nationalgrid.com>; Graber, Bridget <Bridget.Graber@nationalgrid.com>

Cc: Weatherwax, Kim <Kim.Weatherwax@nationalgrid.com>; Kogler, Mark <Mark.Kogler@nationalgrid.com>; Islam, Mohammad A. <Mohammad.Islam@nationalgrid.com>; Domino, Mark F. <Mark.Domino@nationalgrid.com>; Hill, William D. <william.hill@nationalgrid.com>; Mathias, Meredith <Meredith.Mathias@nationalgrid.com>; Rick Chase <Rick.Chase@transmissiondevelopers.com>; Buczek, Jason D. <Jason.Buczek@nationalgrid.com>; Conklin, Kevin J. <Kevin.Conklin@nationalgrid.com>; Ascoti, Demetrio <Demetrio.Ascoti@nationalgrid.com>; Fowles, Matthew <Matthew.Fowles@nationalgrid.com>; Daniel.Keener <Daniel.Keener@kiewit.com>; Tylor.Bottorff

<Tylor.Bottorff@kiewit.com>; Justine.Rojas <Justine.Rojas@Kiewit.com>; Hanford, Madeline

<Maddy.Hanford@wsp.com>; Grassi, Laura <Laura.Grassi@wsp.com>; Mark.Swallow <Mark.Swallow@kiewit.com>; Kelli Capka (KC Engineering-NYC) <kcapka@kcepc.com>; Kern, Michael D. <Michael.Kern@nationalgrid.com>; Michael

Main <Michael.Main@transmissiondevelopers.com>; Fonzi, Joseph J <J.Fonzi@wsp.com>; McNally, Jeffrey <Jeffrey.McNally@wsp.com>; Jasinski, Gregory T. <G.Jasinski@wsp.com>; LaGrave, Barret <Barret.LaGrave@wsp.com>;

Ayokunle Kafi <ayokunle.kafi@transmissiondevelopers.com>; Stephen Rutkey

<stephen.rutkey@transmissiondevelopers.com>; Nolan Mazur <nolan.mazur@transmissiondevelopers.com>; Grassi, Laura <Laura.Grassi@wsp.com>; Neumaier, Steve <Steve.Neumaier@wsp.com>; Mehta, Ruju <ruju.mehta@wsp.com>;

Shute, Nicole <Nicole.Shute@wsp.com>

Subject: RE: CHPE Bi-Weekly Check In

Good Morning Tim, All,

Please find a draft agenda for tomorrow's call below:

1. Project Schedule Overview (Kiewit/TDI)

- CHPE Design Schedule
- CHPE Construction Schedule

2. Review of NG Action Items (NG)

3. Review CHPE's Drawing Sets (Kiewit)

4. Takeaways, Next Steps, Action Items (NG)

Thanks,

Ben Cole

ben.cole@wsp.com

From: Dzimian, Timothy S. <Timothy.Dzimian@nationalgrid.com>

Sent: Friday, March 17, 2023 5:20 AM

To: Schlegel, Jennifer <Jennifer.Schlegel@nationalgrid.com>; Rick Chase <Rick.Chase@transmissiondevelopers.com>; Cole, Benjamin <Ben.Cole@wsp.com>; Aspinall, Pamela <Pamela.Aspinall@nationalgrid.com>; Graber, Bridget <Bridget.Graber@nationalgrid.com>

Cc: Weatherwax, Kim <Kim.Weatherwax@nationalgrid.com>; Kogler, Mark <Mark.Kogler@nationalgrid.com>; Islam, Mohammad A. <Mohammad.Islam@nationalgrid.com>; Domino, Mark F. <Mark.Domino@nationalgrid.com>; Hill, William D. <william.hill@nationalgrid.com>; Mathias, Meredith <Meredithe.Mathias@nationalgrid.com>; Buczek, Jason D. <Jason.Buczek@nationalgrid.com>; Conklin, Kevin J. <Kevin.Conklin@nationalgrid.com>; Ascioti, Demetrio <Demetrio.Ascioti@nationalgrid.com>; Fowles, Matthew <Matthew.Fowles@nationalgrid.com>; Daniel.Keener <Daniel.Keener@kiewit.com>; Tylor.Bottorff <Tylor.Bottorff@kiewit.com>; Justine.Rojas <Justine.Rojas@Kiewit.com>; Hanford, Madeline <Maddy.Hanford@wsp.com>; Grassi, Laura <Laura.Grassi@wsp.com>; Mark.Swallow <Mark.Swallow@kiewit.com>; Kelli Capka (KC Engineering-NYC) <kcapka@kcepc.com>; Kern, Michael D. <Michael.Kern@nationalgrid.com>; Michael Main <Michael.Main@transmissiondevelopers.com>; Fonzi, Joseph J <J.Fonzi@wsp.com>; McNally, Jeffrey <Jeffrey.McNally@wsp.com>; Jasinski, Gregory T. <G.Jasinski@wsp.com>; LaGrave, Barret <Barret.LaGrave@wsp.com>

Subject: RE: CHPE Bi-Weekly Check In

Apologies for the delay. Had to break up the attachments. Will send the recording via second email.

All, attached are the recording, transcript and notes from our call yesterday. Also, please be sure to see the emails sent after our call from Ben Cole and Karla Corpus. Additionally, please be sure to reach out to the group with any other items which we did not have time to discuss. A few highlights

- CHPE to provide agenda items for next call

Please reach out to the group with any new questions/comments/concerns which come up before our next call

Timothy S. Dzimian

Planned Vacation/Out of Office: 4/25/23 through 5/7/23

From: Dzimian, Timothy S.

To: Schlegel, Jennifer; Dzimian, Timothy S.; Rick Chase; Ben.Cole@wsp.com; Aspinall, Pamela; Graber, Bridget

Subject: CHPE Bi-Weekly Check In

Where: Microsoft Teams Meeting

- 1.

Join on your computer, mobile app or room device

[join/19%3ameeting_MDgyYmMxNDEtMDNhOC00OWEzLWFjZGUtZWEOZDM1OTA3MDE5%40thread.v2/0?context=%7b%22Tid%22%3a%22f98a6a53-25f3-4212-901c-c7787fcd3495%22%2c%22Oid%22%3a%22b974c265-7a3f-4fec-9c76-c7803a38f58d%22%7d>](#)

Passcode: WofVhe

Download Teams <<https://www.microsoft.com/en-us/microsoft-teams/download-app>> | Join on the web
<<https://www.microsoft.com/microsoft-teams/join-a-meeting>>

Join with a video conferencing device

nationalgrid@m.webex.com

Video Conference ID: 116 938 233 1

Alternate VTC instructions

<<https://www.webex.com/msteams?confid=1169382331&tenantkey=nationalgrid&domain=m.webex.com>>

Or call in (audio only)

+1 646-680-9909,,464270508# <<tel:+16466809909,,464270508#>> United States, New York City

Phone Conference ID: 464 270 508#

Find a local number <<https://dialin.teams.microsoft.com/db913b0e-7ae9-4a9e-a3e5-30795937983e?id=464270508>> |

Reset PIN <<https://dialin.teams.microsoft.com/usp/pstnconferencing>>

Learn More <<https://aka.ms/JoinTeamsMeeting>> | Meeting options

<[https://teams.microsoft.com/meetingOptions/?organizerId=b974c265-7a3f-4fec-9c76-](https://teams.microsoft.com/meetingOptions/?organizerId=b974c265-7a3f-4fec-9c76-c7803a38f58d&tenantId=f98a6a53-25f3-4212-901c-c7787fcd3495&threadId=19_meeting_MDgyYmMxNDEtMDNhOC00OWEzLWFjZGUtZWE0ZDM1OTA3MDE5@thread.v2&messageId=0&language=en-US)

[c7803a38f58d&tenantId=f98a6a53-25f3-4212-901c-](https://teams.microsoft.com/meetingOptions/?organizerId=b974c265-7a3f-4fec-9c76-c7803a38f58d&tenantId=f98a6a53-25f3-4212-901c-c7787fcd3495&threadId=19_meeting_MDgyYmMxNDEtMDNhOC00OWEzLWFjZGUtZWE0ZDM1OTA3MDE5@thread.v2&messageId=0&language=en-US)

[c7787fcd3495&threadId=19_meeting_MDgyYmMxNDEtMDNhOC00OWEzLWFjZGUtZWE0ZDM1OTA3MDE5@thread.v2](https://teams.microsoft.com/meetingOptions/?organizerId=b974c265-7a3f-4fec-9c76-c7803a38f58d&tenantId=f98a6a53-25f3-4212-901c-c7787fcd3495&threadId=19_meeting_MDgyYmMxNDEtMDNhOC00OWEzLWFjZGUtZWE0ZDM1OTA3MDE5@thread.v2&messageId=0&language=en-US)
&messageId=0&language=en-US>

Join Teams Meeting

en-US

[https://teams.microsoft.com/l/meetup-](https://teams.microsoft.com/l/meetup-join/19%3ameeting_MDgyYmMxNDEtMDNhOC00OWEzLWFjZGUtZWE0ZDM1OTA3MDE5%40thread.v2/0?context=%7b%22Tid%22%3a%22f98a6a53-25f3-4212-901c-c7787fcd3495%22%2c%22Oid%22%3a%22b974c265-7a3f-4fec-9c76-c7803a38f58d%22%7d)

[join/19%3ameeting_MDgyYmMxNDEtMDNhOC00OWEzLWFjZGUtZWE0ZDM1OTA3MDE5%40thread.v2/0?context=%7b%22Tid%22%3a%22f98a6a53-25f3-4212-901c-c7787fcd3495%22%2c%22Oid%22%3a%22b974c265-7a3f-4fec-9c76-c7803a38f58d%22%7d](https://teams.microsoft.com/l/meetup-join/19%3ameeting_MDgyYmMxNDEtMDNhOC00OWEzLWFjZGUtZWE0ZDM1OTA3MDE5%40thread.v2/0?context=%7b%22Tid%22%3a%22f98a6a53-25f3-4212-901c-c7787fcd3495%22%2c%22Oid%22%3a%22b974c265-7a3f-4fec-9c76-c7803a38f58d%22%7d)

Meeting ID: 298 908 635 879

Passcode: WofVhe

Join with a video conferencing device

nationalgrid@m.webex.com

116 938 233 1

<https://www.webex.com/msteams?confid=1169382331&tenantkey=nationalgrid&domain=m.webex.com>

If you need a local number, get one here. And if you've forgotten the dial-in PIN, you can reset it.

Toll number: +1 646-680-9909

Conference ID:

464 270 508#

Local Number : <https://dialin.teams.microsoft.com/db913b0e-7ae9-4a9e-a3e5-30795937983e?id=464270508> Reset Pin
: <https://dialin.teams.microsoft.com/usp/pstnconferencing>

Learn More <https://aka.ms/JoinTeamsMeeting> | | Meeting options:

[https://teams.microsoft.com/meetingOptions/?organizerId=b974c265-7a3f-4fec-9c76-](https://teams.microsoft.com/meetingOptions/?organizerId=b974c265-7a3f-4fec-9c76-c7803a38f58d&tenantId=f98a6a53-25f3-4212-901c-c7787fcd3495&threadId=19_meeting_MDgyYmMxNDEtMDNhOC00OWEzLWFjZGUtZWE0ZDM1OTA3MDE5@thread.v2&messageId=0&language=en-US)

[c7803a38f58d&tenantId=f98a6a53-25f3-4212-901c-](https://teams.microsoft.com/meetingOptions/?organizerId=b974c265-7a3f-4fec-9c76-c7803a38f58d&tenantId=f98a6a53-25f3-4212-901c-c7787fcd3495&threadId=19_meeting_MDgyYmMxNDEtMDNhOC00OWEzLWFjZGUtZWE0ZDM1OTA3MDE5@thread.v2&messageId=0&language=en-US)

[c7787fcd3495&threadId=19_meeting_MDgyYmMxNDEtMDNhOC00OWEzLWFjZGUtZWE0ZDM1OTA3MDE5@thread.v2](https://teams.microsoft.com/meetingOptions/?organizerId=b974c265-7a3f-4fec-9c76-c7803a38f58d&tenantId=f98a6a53-25f3-4212-901c-c7787fcd3495&threadId=19_meeting_MDgyYmMxNDEtMDNhOC00OWEzLWFjZGUtZWE0ZDM1OTA3MDE5@thread.v2&messageId=0&language=en-US)
&messageId=0&language=en-US |

.....

This e-mail, and any attachments are strictly confidential and intended for the addressee(s) only. The content may also contain legal, professional or other privileged information. If you are not the intended recipient, please notify the sender immediately and then delete the e-mail and any attachments. You should not disclose, copy or take any action in reliance on this transmission.

You may report the matter by contacting us via our [UK Contacts Page](#) or our [US Contacts Page](#) (accessed by clicking on the appropriate link)

Please ensure you have adequate virus protection before you open or detach any documents from this transmission. National Grid plc and its affiliates do not accept any liability for viruses. An e-mail reply to this address may be subject to monitoring for operational reasons or lawful business practices.

For the registered information on the UK operating companies within the National Grid group please use the attached link: <https://www.nationalgrid.com/group/about-us/corporate-registrations>

Cole, Benjamin

From: Zuccolotto, James M. <James.Zuccolotto@nationalgrid.com>
Sent: Thursday, May 4, 2023 2:28 PM
To: Ayokunle Kafi
Cc: Madhusudhan, Srividya; Schlegel, Jennifer
Subject: Segments 8/9 (Design packages 5A& 5B)

Good afternoon Kunle,

Happy to have you share the response below with the PSC regarding team interaction for segments 8/9.

With respect to Segments 8/9 (Design packages 5A& 5B) CHPE has been in ongoing consultation with National Grid regarding the design of CHPE's facilities within the proximity of our utilities along its proposed alignment. To date, our team is continuing to work with the CHPE design, construction, and real estate occupancy teams to ensure that all elements of the proposed collocation interaction are in conformance with National Grid's requirements. While these consultations are progressing and expect we will be able to reach agreement, the CHPE designs within the proximity of National Grid utilities remain subject to our final comments, conditions, and approval, which will be memorialized in the EM&CP documents and appropriate agreements prior to the commencement of any construction activities on National Grid property and/or proximate to National Grid assets.

Best Regards,
Jim

James Zuccolotto
Director
Aviation, Right of Way & Survey Engineering
Nationalgrid Property Services

This e-mail, and any attachments are strictly confidential and intended for the addressee(s) only. The content may also contain legal, professional or other privileged information. If you are not the intended recipient, please notify the sender immediately and then delete the e-mail and any attachments. You should not disclose, copy or take any action in reliance on this transmission.

You may report the matter by contacting us via our [UK Contacts Page](#) or our [US Contacts Page](#) (accessed by clicking on the appropriate link)

Please ensure you have adequate virus protection before you open or detach any documents from this transmission. National Grid plc and its affiliates do not accept any liability for viruses. An e-mail reply to this address may be subject to monitoring for operational reasons or lawful business practices.

For the registered information on the UK operating companies within the National Grid group please use the attached link: <https://www.nationalgrid.com/group/about-us/corporate-registrations>

Cole, Benjamin

From: Cole, Benjamin
Sent: Friday, April 28, 2023 5:15 PM
To: Hanifan, Michael; Sherry, Mark
Cc: Stephen Rutkey; Grassi, Laura; Albers, David
Subject: RE: KWT - Overland: New Transmittal - WSP-SPR-TRNS-0126 - CHPE Package 5A Co-Located Infrastructure Matrix and Drawings - Sprint

Thank you Mike – appreciate your attention with this. We’ve forwarded your feedback to the design team and will provide an updated drawing set when it becomes available.

Ben Cole

ben.cole@wsp.com

From: Hanifan, Michael <Michael.J.Hanifan@t-mobile.com>
Sent: Friday, April 28, 2023 11:39 AM
To: Cole, Benjamin <Ben.Cole@wsp.com>; Sherry, Mark <Mark.Sherry@t-mobile.com>
Cc: Stephen Rutkey <stephen.rutkey@transmissiondevelopers.com>; Grassi, Laura <Laura.Grassi@wsp.com>; Albers, David <Dave.Albers@wsp.com>
Subject: RE: KWT - Overland: New Transmittal - WSP-SPR-TRNS-0126 - CHPE Package 5A Co-Located Infrastructure Matrix and Drawings - Sprint

Ben

Looking at these locations in question.

2”
s
d
d

k
d



Mike Hanifan

From: Cole, Benjamin <Ben.Cole@wsp.com>

Sent: Thursday, April 27, 2023 4:27 PM

To: Hanifan, Michael <Michael.J.Hanifan@t-mobile.com>; Sherry, Mark <Mark.Sherry@t-mobile.com>

Cc: Stephen Rutkey <stephen.rutkey@transmissiondevelopers.com>; Grassi, Laura <Laura.Grassi@wsp.com>; Albers, David <Dave.Albers@wsp.com>

Subject: RE: KWT - Overland: New Transmittal - WSP-SPR-TRNS-0126 - CHPE Package 5A Co-Located Infrastructure Matrix and Drawings - Sprint

[External]

Good Afternoon,

As you know, CHPE has been in dialogue with you regarding the design of CHPE's facilities in the proximity of your utility. You understand from CHPE that the design reflects your feedback. The designs in the proximity of your utility remain subject to your final comments and approval, which will be memorialized prior to the commencement of any construction activities in the vicinity of your utilities.

CHPE kindly requests that you reply to this email as soon as possible confirming the statement above is accurate, or rephrase as you deem appropriate.

Thank you,
Ben Cole
Co-Located Infrastructure Lead

From: Cole, Benjamin

Sent: Wednesday, March 22, 2023 3:11 PM

To: Hanifan, Michael <Michael.J.Hanifan@t-mobile.com>; Sherry, Mark <Mark.Sherry@t-mobile.com>

Subject: RE: KWT - Overland: New Transmittal - WSP-SPR-TRNS-0126 - CHPE Package 5A Co-Located Infrastructure Matrix and Drawings - Sprint

Hi Gentlemen,

The design is approaching completion in the CHPE Package 5A area. Please see below for an updated link to the alignment drawings and let me know if you have comments on the alignment with respect to Sprint infrastructure.

[Sprint Package 5A](#)

Thank You,

Ben Cole

ben.cole@wsp.com

From: Cole, Benjamin
Sent: Tuesday, November 8, 2022 5:26 PM
To: Hanifan, Michael <Michael.J.Hanifan@t-mobile.com>
Cc: Sherry, Mark <Mark.Sherry@t-mobile.com>; Rick Chase <rick.chase@transmissiondevelopers.com>; chpedoccontrol@portal3.pbid.com
Subject: RE: KWT - Overland: New Transmittal - WSP-SPR-TRNS-0126 - CHPE Package 5A Co-Located Infrastructure Matrix and Drawings - Sprint

Hi Mike,

Checking in on whether T-Mobile/Sprint has any feedback/comments on the CHPE draft alignment or plan/profile drawings (or if you were able to find out any more info as described below).

Thank You,

Ben Cole

ben.cole@wsp.com

From: Hanifan, Michael <Michael.J.Hanifan@t-mobile.com>
Sent: Friday, October 14, 2022 7:27 PM
To: Cole, Benjamin <Ben.Cole@wsp.com>
Cc: Sherry, Mark <Mark.Sherry@t-mobile.com>; Rick Chase <rick.chase@transmissiondevelopers.com>
Subject: Re: KWT - Overland: New Transmittal - WSP-SPR-TRNS-0126 - CHPE Package 5A Co-Located Infrastructure Matrix and Drawings - Sprint

Yes, I will check.

Get [Outlook for iOS](#)

From: Cole, Benjamin <Ben.Cole@wsp.com>
Sent: Friday, October 14, 2022 7:23:35 PM
To: Hanifan, Michael <Michael.J.Hanifan@t-mobile.com>
Cc: Sherry, Mark <Mark.Sherry@t-mobile.com>; Rick Chase <rick.chase@transmissiondevelopers.com>
Subject: RE: KWT - Overland: New Transmittal - WSP-SPR-TRNS-0126 - CHPE Package 5A Co-Located Infrastructure Matrix and Drawings - Sprint

[External]

Hi Mike, thanks for getting back to me.

I have to plead ignorance on the reference to a meeting in Rochester. That could have happened before my time on the project but I have not heard about it. If that was for CHPE can you tell me who at CHPE or TDI may have more info?

Thanks,

Ben Cole

ben.cole@wsp.com

From: Hanifan, Michael <Michael.J.Hanifan@t-mobile.com>
Sent: Friday, October 14, 2022 12:17 PM
To: Cole, Benjamin <Ben.Cole@wsp.com>
Cc: Sherry, Mark <Mark.Sherry@t-mobile.com>
Subject: RE: KWT - Overland: New Transmittal - WSP-SPR-TRNS-0126 - CHPE Package 5A Co-Located Infrastructure Matrix and Drawings - Sprint

Ben
I looked through the plan T-Mobile/Sprint obviously has fiber along the CSX ROW. We certainly want to avoid any relocations and will work with you. We had a field meeting for the project in Rochester and went to all the sites that were tight. Do you plan to have the same type of meeting for this Phase? I copied Mark Sherry he is the local tech for this area.



Mike Hanifan
M 413-237-2598

From: Cole, Benjamin <Ben.Cole@wsp.com>
Sent: Thursday, October 13, 2022 6:33 PM
To: Hanifan, Michael <michael.j.hanifan@t-mobile.com>
Subject: RE: KWT - Overland: New Transmittal - WSP-SPR-TRNS-0126 - CHPE Package 5A Co-Located Infrastructure Matrix and Drawings - Sprint

[External]

Good Evening,

I'm checking in to see if you have comments on the information below and plans/profiles available at the link.

Thank You,

Ben Cole

ben.cole@wsp.com

From: CHPE-KWT@portal3.pbid.com <CHPE-KWT@portal3.pbid.com>
Sent: Thursday, September 8, 2022 2:02 PM
To: michael.j.hanifan@t-mobile.com
Cc: CHPE-KWT@portal3.pbid.com
Subject: KWT - Overland: New Transmittal - WSP-SPR-TRNS-0126 - CHPE Package 5A Co-Located Infrastructure Matrix and Drawings - Sprint

Workflow Notification

A new Transmittal has been entered into the system.

Transmittal #: WSP-SPR-TRNS-0126

Subject: CHPE Package 5A Co-Located Infrastructure Matrix and Drawings - Sprint

ATTN: Mike Hanifan

From: Ben Cole

Issue Purpose: For Your Information

Date Transmitted: 9/2/2022

Comments: Good Afternoon,

I'm writing on behalf of Transmission Developers Inc. ("TDI"), owner of the Champlain Hudson Power Express ("CHPE" or "Project") transmission line project. The purpose of this correspondence is to provide more detailed information related to how the CHPE project is designed to interact with your infrastructure and to solicit feedback from your company regarding the Project's alignment.

The CHPE is a fully permitted 339-mile underground and underwater high voltage direct current (HVDC) electric transmission line that will import up to 1,250 MW of renewable power from Canada and send it to the New York City metro area (see <https://chpexpress.com> for additional information).

At the enclosed link please find design drawings of the proposed CHPE alignment where it involves your infrastructure within the CHPE Package referenced in the title of this message.

TDI will be submitting these plans to the New York State Public Service Commission ("PSC") for approval prior to construction.

Please review the linked information regarding the CHPE alignment relating to your infrastructure and provide concurrence with the Project's cable separation and alignment and any feedback to ben.cole@wsp.com by September 16, 2022.

It is important to TDI that the construction and operation of the CHPE project does not interfere with the continued operation of your infrastructure.

To the extent that the CHPE alignment interacts with your infrastructure within future Segment EM&CP submissions, we will provide you with similar drawings in advance of those filings. I look forward to coordinating with you as we finalize the design of the CHPE project.

Thank You,

Ben Cole

WSP USA, on behalf of TDI

ben.cole@wsp.com

File Links (link will be active for 60 days):

File Name
Package 5A_Sprint_Co-Located Infrastructure_2022-08-22.pdf

CHPE SharePoint users can access the record and file(s) using the link below:

https://chpe.pbid.com/KWT/_layouts/15/DocSetHome.aspx?id=/KWT/Transmittals/CHPE%20Package%205A%20Co-

[Located%20Infrastructure%20Matrix%20and%20Drawings%20-%20Sprint&OpenIn=browser](#)

Disclaimer: The information contained in this email, including linked content, is considered confidential and may be privileged. It is intended only for the person or entity to which it is addressed and must not be sent or made accessible to other recipients. If you are not the intended recipient, you are hereby notified that any review, retransmission, dissemination or other use of, or taking any action in reliance upon this information is strictly prohibited. If you have received this email in error, kindly notify chpedoccontrol@portal3.pbid.com and delete the original message from your system.

Thank You.

NOTICE: This communication and any attachments ("this message") may contain information which is privileged, confidential, proprietary or otherwise subject to restricted disclosure under applicable law. This message is for the sole use of the intended recipient(s). Any unauthorized use, disclosure, viewing, copying, alteration, dissemination or distribution of, or reliance on, this message is strictly prohibited. If you have received this message in error, or you are not an authorized or intended recipient, please notify the sender immediately by replying to this message, delete this message and all copies from your e-mail system and destroy any printed copies.

-LAEmHhHzdJzBITWfa4Hgs7pbKI

Cole, Benjamin

From: Larue III, Anthony J <tony.j.larue@verizon.com>
Sent: Monday, May 1, 2023 7:26 AM
To: Cole, Benjamin
Cc: Brickley, Charles Louis; Michael Myers; Charles Louis Brickley; Jason R Adkison; Alexander J Masti; Hill, Nathaniel RT (Nate); Yakaitis, Raymond A.; Grassi, Laura
Subject: Re: [E] CHPE Collocated Infrastructure Details_5A and 5B_Verizon

I think Mike Myers was able to open 5A - Sorry could not make the call on Friday - Mike if the work is similar to what we are reviewed in 4A and 4B did you notice any potential conflicts on our end that would require a call?

Do we have start dates for this section of the build? is this the final plan?

On Fri, Apr 28, 2023 at 4:59 PM Cole, Benjamin <Ben.Cole@wsp.com> wrote:

Got it. Thanks for confirming.

Ben Cole

ben.cole@wsp.com

From: Brickley, Charles Louis <charles.brickley@verizon.com>
Sent: Friday, April 28, 2023 4:47 PM
To: Cole, Benjamin <Ben.Cole@wsp.com>
Cc: Michael Myers <mmyers@undc.com>; Larue III, Anthony J <tony.j.larue@verizon.com>; Charles Louis Brickley <charles.brickley@one.verizon.com>; Jason R Adkison <jason.r.adkison@one.verizon.com>; Alexander J Masti <alexander.masti@verizon.com>; Hill, Nathaniel RT (Nate) <nathaniel.hill@verizon.com>; Yakaitis, Raymond A. <Raymond.Yakaitis@wsp.com>; Grassi, Laura <Laura.Grassi@wsp.com>
Subject: Re: [E] CHPE Collocated Infrastructure Details_5A and 5B_Verizon

Correct

On Fri, Apr 28, 2023 at 3:57 PM Cole, Benjamin <Ben.Cole@wsp.com> wrote:

Thank you Sir!

So far you cannot open or have not received the 5A file, right?

Ben Cole

ben.cole@wsp.com

From: Brickley, Charles Louis <charles.brickley@verizon.com>

Sent: Friday, April 28, 2023 3:50 PM

To: Cole, Benjamin <Ben.Cole@wsp.com>

Cc: Michael Myers <mmyers@undc.com>; Larue III, Anthony J <tony.j.larue@verizon.com>; Charles Louis Brickley <charles.brickley@one.verizon.com>; Jason R Adkison <jason.r.adkison@one.verizon.com>; Alexander J Masti <alexander.masti@verizon.com>; Hill, Nathaniel RT (Nate) <nathaniel.hill@verizon.com>; Yakaitis, Raymond A. <Raymond.Yakaitis@wsp.com>; Grassi, Laura <Laura.Grassi@wsp.com>

Subject: Re: [E] CHPE Collocated Infrastructure Details_5A and 5B_Verizon

I am able to open the 5B file in the email from yesterday. Everything in it looks acceptable to me.

Thank you,

Charlie

On Fri, Apr 28, 2023 at 3:41 PM Cole, Benjamin <Ben.Cole@wsp.com> wrote:

Thank you Mike, for trying the Teams thing with me. Will hold until hear back from you next week. Appreciate the help.

Ben Cole

ben.cole@wsp.com

From: Michael Myers <mmyers@undc.com>

Sent: Friday, April 28, 2023 3:02 PM

To: Cole, Benjamin <Ben.Cole@wsp.com>; Larue III, Anthony J <tony.j.larue@verizon.com>; Charles Louis Brickley <charles.brickley@one.verizon.com>

Cc: Jason R Adkison <jason.r.adkison@one.verizon.com>; Alexander J Masti <alexander.masti@verizon.com>; Hill, Nathaniel RT (Nate) <nathaniel.hill@verizon.com>; Yakaitis, Raymond A. <Raymond.Yakaitis@wsp.com>; Grassi, Laura <Laura.Grassi@wsp.com>

Subject: RE: [E] CHPE Collocated Infrastructure Details_5A and 5B_Verizon

Benjamin:

The files were rejected by the Verizon email server for being too large.

Thank you;

Michael S. Myers

Outside Plant Design Engineer

NY BAU Project Coordinator



From: Cole, Benjamin <Ben.Cole@wsp.com>

Sent: Friday, April 28, 2023 2:05 PM

To: Michael Myers <mmyers@undc.com>; Larue III, Anthony J <tony.j.larue@verizon.com>; Charles Louis Brickley <charles.brickley@one.verizon.com>

Cc: Jason R Adkison <jason.r.adkison@one.verizon.com>; Alexander J Masti <alexander.masti@verizon.com>; Hill, Nathaniel RT (Nate) <nathaniel.hill@verizon.com>; Yakaitis, Raymond A. <Raymond.Yakaitis@wsp.com>; Grassi, Laura <Laura.Grassi@wsp.com>

Subject: RE: [E] CHPE Collocated Infrastructure Details_5A and 5B_Verizon

Thank you Michael, All.

Any luck opening the PDFs that Michael sent? When I sent them as attachments yesterday they were kicked back as undeliverable.

Thanks,

Ben Cole

ben.cole@wsp.com

From: Michael Myers <mmyers@undc.com>

Sent: Friday, April 28, 2023 7:22 AM

To: Larue III, Anthony J <tony.j.larue@verizon.com>; Charles Louis Brickley <charles.brickley@one.verizon.com>; Cole, Benjamin <Ben.Cole@wsp.com>

Cc: Jason R Adkison <jason.r.adkison@one.verizon.com>; Alexander J Masti <alexander.masti@verizon.com>; Hill, Nathaniel RT (Nate) <nathaniel.hill@verizon.com>

Subject: RE: [E] CHPE Collocated Infrastructure Details_5A and 5B_Verizon

Verizon team:

See If You can download the attached PDF's for CHPE Sections 5A and 5B.

If so; This will avoid having to use Benjamin's work arounds.

Thank You;

Michael S. Myers

Outside Plant Design Engineer

NY BAU Project Coordinator



From: Cole, Benjamin <Ben.Cole@wsp.com>

Sent: Thursday, April 27, 2023 3:22 PM

To: Larue III, Anthony J <tony.j.larue@verizon.com>; Charles Louis Brickley <charles.brickley@one.verizon.com>; Yakaitis, Raymond A. <Raymond.Yakaitis@wsp.com>

Cc: Jason R Adkison <jason.r.adkison@one.verizon.com>; Alexander J Masti <alexander.masti@verizon.com>; charles.brickley@verizon.com; Hill, Nathaniel RT (Nate) <nathaniel.hill@verizon.com>; Michael Myers <mmyers@undc.com>

Subject: RE: [E] CHPE Collocated Infrastructure Details_5A and 5B_Verizon

Hi Tony, Charles,

One easy solution may be for me to send a Teams invite, you to accept and us to transfer the files via that platform.

Alternatively, can you ask Verizon IT support to allow file links from 'wspis.sharepoint.com'?

Thanks,

Ben Cole

ben.cole@wsp.com

From: Cole, Benjamin

Sent: Thursday, April 27, 2023 11:06 AM

To: Larue III, Anthony J <tony.j.larue@verizon.com>; Charles Louis Brickley <charles.brickley@one.verizon.com>; Yakaitis, Raymond A. <Raymond.Yakaitis@wsp.com>

Cc: Jason R Adkison <jason.r.adkison@one.verizon.com>; Alexander J Masti <alexander.masti@verizon.com>; charles.brickley@verizon.com; Hill, Nathaniel RT (Nate) <nathaniel.hill@verizon.com>; Michael Myers <mmyers@undc.com>

Subject: RE: [E] CHPE Collocated Infrastructure Details_5A and 5B_Verizon

I sent Package 5B as an attachment and compressed and uncompressed versions of 5A.

Please let me know if you receive. At least some are coming back as undeliverable.

Thanks,

Ben Cole

ben.cole@wsp.com

From: Cole, Benjamin

Sent: Thursday, April 27, 2023 9:26 AM

To: Larue III, Anthony J <tony.j.larue@verizon.com>; Charles Louis Brickley <charles.brickley@one.verizon.com>; Yakaitis, Raymond A. <Raymond.Yakaitis@wsp.com>

Cc: Jason R Adkison <jason.r.adkison@one.verizon.com>; Alexander J Masti <alexander.masti@verizon.com>; charles.brickley@verizon.com; Hill, Nathaniel RT (Nate) <nathaniel.hill@verizon.com>; Michael Myers <mmyers@undc.com>

Subject: RE: [E] CHPE Collocated Infrastructure Details_5A and 5B_Verizon

Thanks Tony – really appreciate it. Copying our IT guy, @Yakaitis, Raymond A., to help with this issue.

Ben Cole

ben.cole@wsp.com

From: Larue III, Anthony J <tony.j.larue@verizon.com>

Sent: Thursday, April 27, 2023 9:23 AM

To: Cole, Benjamin <Ben.Cole@wsp.com>; Charles Louis Brickley <charles.brickley@one.verizon.com>

Cc: Jason R Adkison <jason.r.adkison@one.verizon.com>; Alexander J Masti <alexander.masti@verizon.com>; charles.brickley@verizon.com; Hill, Nathaniel RT (Nate) <nathaniel.hill@verizon.com>; Michael Myers <mmyers@undc.com>

Subject: Re: [E] CHPE Collocated Infrastructure Details_5A and 5B_Verizon

Good Morning, So looping in our Albany Engineer Charles Brickley - I can't seem to open the files on this email, we have a firewall and it is coming over as a security threat - Could you save it in a different format and try sending it over again.

On Thu, Apr 27, 2023 at 6:18 AM Cole, Benjamin <Ben.Cole@wsp.com> wrote:

Good Morning Tony,

For your review and comment, please see two links below, to the updated plan/profile drawing sets for CHPE Packages 5A and 5B (Rotterdam – Selkirk area).

[CHPE-SUB-0094.03-00-Verizon - CI Owner Package - 5A - 03-08-2023.pdf](#)

[CHPE-SUB-0095.01-00-Verizon - CI Owner Package - 5B - 03-09-2023.pdf](#)

I think this is your territory, but unsure (please advise if not). We are hoping to get any feedback on the CHPE alignment that Verizon may have as soon as possible, as the project is targeting the beginning of June to begin construction in the area. Please let me know any comments or feedback, or if a call is needed to discuss.

Thank You,

Ben Cole

ben.cole@wsp.com

From: Cole, Benjamin
Sent: Wednesday, March 22, 2023 1:22 PM
To: 'Hill, Nathaniel RT (Nate)' <nathaniel.hill@verizon.com>
Subject: RE: [E] CHPE Collocated Infrastructure Details_1C_Verizon

Hi again Nate,

Links to download the most current plans/profiles for 5A and 5B are below.

Not sure if this is your territory or that of others (can you please let me know/confirm?). 5A = Schnecetady and Albany Counties; 5B = Albany County.

5A

<https://wspis.sharepoint.com/:b:/s/CHPE/Ed93PDLHdA9Kj5HKxZH2L7QByujWHQ2sJSep7pBXmAJdZw?e=OOmVEr>

5B

https://wspis.sharepoint.com/:b:/s/CHPE/EYn3IPrjcnBJm0xel7R2EPYBSn5_Fr60Nbteu_SDf_IZGg?e=DEnUej

Thanks,

Ben Cole

ben.cole@wsp.com

From: Cole, Benjamin
Sent: Wednesday, March 22, 2023 1:10 PM
To: Hill, Nathaniel RT (Nate) <nathaniel.hill@verizon.com>
Subject: RE: [E] CHPE Collocated Infrastructure Details_1C_Verizon

Thanks Nate.

I'm checking with the CHPE team and will get back to you or send a Teams invite. If the timing doesn't work let me know and we can adjust.

On another topic, I don't think we received any feedback on package 5A and 5B (apologies if I missed it). Can I assume you're set with those in terms of alignment and any other topics with regard to the CHPE alignment?

Thanks,

Ben Cole

ben.cole@wsp.com

From: Hill, Nathaniel RT (Nate) <nathaniel.hill@verizon.com>
Sent: Wednesday, March 22, 2023 9:06 AM
To: Cole, Benjamin <Ben.Cole@wsp.com>
Subject: Re: [E] CHPE Collocated Infrastructure Details_1C_Verizon

Good morning Ben,

I have pretty much open availability next week, as I'm off the rest of the week after today!

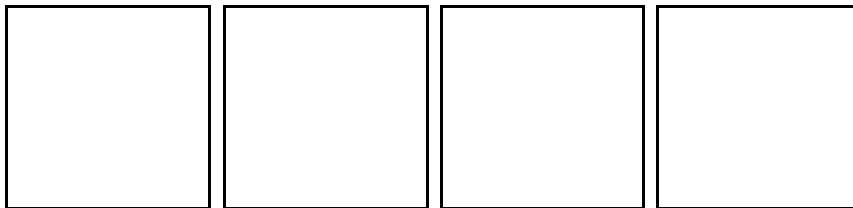
Thanks,



Nate Hill
(he/him)

Outside Plant Design Engineer - Adirondacks/Catskills
NYS/MA/RI Access Engineering

11 Wards Lane
Menands, NY 12205



On Tue, Mar 21, 2023 at 1:51 PM Cole, Benjamin <Ben.Cole@wsp.com> wrote:

Thank you Nate. Best news all day..!

Also, I'm being asked to coordinate with about Culvert 47, with the fiber line that you exchanged messages with Terry Bishop on. Can you be available for a short call (half-hour is my guess) to talk with the CHPE team? What are some options that meet your availability?

Thanks,

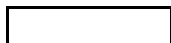
Ben Cole

ben.cole@wsp.com

From: Hill, Nathaniel RT (Nate) <nathaniel.hill@verizon.com>
Sent: Tuesday, March 21, 2023 1:30 PM
To: Cole, Benjamin <Ben.Cole@wsp.com>
Subject: Re: [E] CHPE Collocated Infrastructure Details_1C_Verizon

Separations are acceptable!

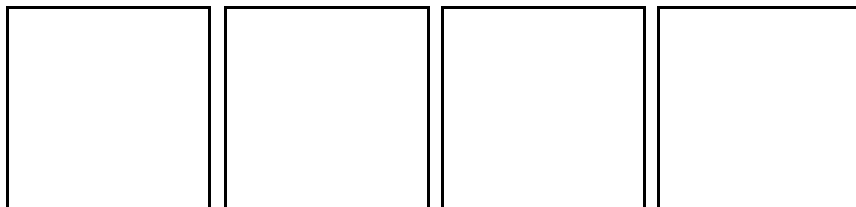
Thanks,



Nate Hill
(he/him)

Outside Plant Design Engineer - Adirondacks/Catskills
NYS/MA/RI Access Engineering

11 Wards Lane
Menands, NY 12205



On Mon, Mar 20, 2023 at 5:25 PM Cole, Benjamin <Ben.Cole@wsp.com> wrote:

HI Nate,

I understand that updated plans/profiles will be available soon. I'll provide asap but also wanted to touch base and let you know we had not received comments on Packages 1C and 2 and are assuming that the Project default

separations are acceptable and you don't have comments on those packages. Please let me know if that's not correct.

Thank You,

Ben Cole

ben.cole@wsp.com

NOTICE: This communication and any attachments ("this message") may contain information which is privileged, confidential, proprietary or otherwise subject to restricted disclosure under applicable law. This message is for the sole use of the intended recipient(s). Any unauthorized use, disclosure, viewing, copying, alteration, dissemination or distribution of, or reliance on, this message is strictly prohibited. If you have received this message in error, or you are not an authorized or intended recipient, please notify the sender immediately by replying to this message, delete this message and all copies from your e-mail system and destroy any printed copies.

-LAEmHhHzdJzBtWfa4Hgs7pbKI

--

Tony J. LaRue

11 Wards Ln 3rd Floor

Menands NY 12204

Engr III Spec-Ntwk Eng&Ops

--

Tony J. LaRue
11 Wards Ln 3rd Floor
Menands NY 12204
Engr III Spec-Ntwk Eng&Ops

Package 5A

RUA Signature Pages 1, 2 and Signature

CHPE LLC AND CHPE PROPERTIES, INC.

AND

VILLAGE OF VOORHEESVILLE, NEW YORK

CROSSING AGREEMENT FOR THE
CHAMPLAIN HUDSON POWER EXPRESS ELECTRIC
TRANSMISSION CABLE SYSTEM CROSSING

DATED May 3, 2023

ADDRESS: Voorheesville Village Hall, 29 Voorheesville Ave, Voorheesville, NY 12186
CITY/VILLAGE/TOWN: Village of Voorheesville
COUNTY: Albany
STATE: New York

CROSSING AGREEMENT

This Crossing Agreement ("Agreement"), entered into this 03 day of May, 2023 by and between CHPE LLC and its wholly-owned subsidiary CHPE Properties, Inc. (collectively, "CHPE") having an office located at 600 Broadway, Albany, New York 12207 and the Village of Voorheesville, New York (the "Village") having an office at 29 Voorheesville Ave, Voorheesville, NY 12186.

RECITALS:

WHEREAS, CHPE intends to construct and operate a buried 1,250 megawatt High Voltage Direct Current electric transmission facility consisting of two solid-state cables and related equipment and appurtenances ("Project") pursuant to the Certificate of Environmental Capability and Public Need granted to CHPE by the New York State Public Service Commission ("PSC") on April 20, 2013 (as amended from time to time, the "Certificate"), the Project's Environmental Management and Construction Plan (as amended from time to time, "EM&CP") to be approved

by the PSC in due course, and other permits and authorizations to conduct certain related activities, including Project construction and Project restoration activities as provided for herein (collectively, "Project Activities"); and

WHEREAS, certain capitalized terms used herein are defined on **Exhibit A**; and

WHEREAS, on December 17, 2020, the Village Board of the Village of Voorheesville (the "Board") pursuant to Resolution 10 of 2020, a copy of which is annexed hereto as **Exhibit B**, granted its consent, pursuant to Section 11 of the New York State Transportation Corporations Law, to CHPE's proposed routing of the Project over certain municipal property (the "Resolution"); and

WHEREAS, on January 1, 2020, the Climate Leadership and Community Protection Act ("CLCPA") became law in the State of New York; and

WHEREAS, in the wake of the enactment of the CLCPA, the New York State Energy Research and Development Authority awarded a contract involving the use of the Project to transmit renewable energy into New York State; and

WHEREAS, in order to accomplish Project Activities within the Village, CHPE needs to install and utilize a temporary easement area during the construction period on, certain Village Lands known as Tax Parcel ID 72.16-5-44, as shown on the maps attached hereto as **Exhibit C** (the "Village Lands"); and

WHEREAS, the Village seeks assurances from CHPE that CHPE will pay and/or otherwise indemnify the Village for any damage to the Village Lands and any other public infrastructure used or traversed by CHPE or its contractors to access the Village Lands for installation of the cable in and under the Village Lands; and

WHEREAS, the Village has been duly authorized to enter into this Agreement:

NOW, THEREFORE, in consideration of the promises set forth in the recitals above and other good and valuable consideration, the receipt and sufficiency of which are hereby acknowledged, CHPE and the Village, each intending to be legally bound, agree as follows:

1. Rights Granted.

a. The Village has consented to CHPE conducting temporary construction activities on the Village Lands in accordance with the provisions of this Agreement, and to utilizing certain temporary easement space on certain Village Land, as outlined in **Exhibit C** hereto. Such consent shall be non-exclusive and subject to any other rights of others in and to any of the foregoing Village Lands in existence as of the date hereof, and provided that the Village may enter into agreements after the date hereof granting third-party rights with respect to the use or occupancy of the Village Lands which are not in conflict with the rights granted to CHPE pursuant to this Agreement.

Village of Voorheesville, New York

By: _____

Richard Straut
Mayor

CHPE LLC

By: _____

CHPE Properties, Inc.

By: _____

Josh Bagnato
SVP, Project Development

CHPE LLC AND CHPE PROPERTIES, INC.

AND

TOWN OF BETHLEHEM, NEW YORK

**ROAD USE AND CROSSING
AGREEMENT FOR THE
CHAMPLAIN HUDSON POWER EXPRESS ELECTRIC
TRANSMISSION CABLE SYSTEM CROSSING**

DATED MARCH 23, 2022

ADDRESS: Town Hall, 445 Delaware Avenue, Bethlehem, New York 12054

CITY/VILLAGE/TOWN: Town of Bethlehem

COUNTY: Albany

STATE: New York

ROAD USE AND CROSSING AGREEMENT

This Road Use and Crossing Agreement ("Agreement"), entered into this 23rd day of March, 202_ by and between CHPE LLC and its wholly-owned subsidiary CHPE PROPERTIES, INC. (collectively, "CHPE") having offices at 600 Broadway, Albany, New York 12207 and the Town of Bethlehem, New York (the "Town") having offices at 445 Delaware Avenue, Bethlehem, New York 12054.

RECITALS:

WHEREAS, CHPE intends to construct and operate a buried 1,250 megawatt High Voltage Direct Current electric transmission facility consisting of two solid-state cables and related equipment and appurtenances ("Project") pursuant to the Certificate of Environmental Capability and Public Need granted to CHPE by the New York State Public Service Commission ("PSC") on April 20, 2013 (as amended from time to time, the "Certificate"), the Project's Environmental

Management and Construction Plan (as amended from time to time, “EM&CP”) to be approved by the PSC in due course, and other permits and authorizations to conduct certain related activities, including Project construction and Project restoration activities as provided for herein (collectively, “Project Activities”); and

WHEREAS, on June 12, 2019, the Town Board of the Town of Bethlehem (the “Board”) approved revisions to the Project route in the Town through the adoption of Resolution 2019-16; and

WHEREAS, on January 1, 2020, the Climate Leadership and Community Protection Act (“CLCPA”) became law in the State of New York; and

WHEREAS, in order to accomplish Project Activities within the Town, CHPE needs to install and operate buried Project cables in and under a certain Town road known as West Yard Road, as shown on the map attached hereto as Exhibit A (the “Road”); and

WHEREAS, the Town must have assurances from CHPE that CHPE will pay and/or otherwise indemnify the Town for any damage to the Road and any access roads, streets, or other public infrastructure used or traversed by CHPE or its contractors to access the work site for installation of the cable in and under the Road and/or arising from or related to Project construction, maintenance, and occupancy activities; and

NOW, THEREFORE, in consideration of the premises set forth in the recitals above and other good and valuable consideration, the receipt and sufficiency of which are hereby acknowledged, CHPE and the Town, each intending to be legally bound, agree as follows:

1. Rights Granted.

a. The Town hereby acknowledges and confirms its consent to CHPE in accordance with Section 11(3) of the New York State Transportation Corporations Law, to lay down, construct and maintain wires, conductors, conduits and other fixtures in and under the Road in the Town in accordance with the provisions of this Agreement.

2. CHPE Construction Responsibilities.

a. CHPE shall be responsible for obtaining any approvals, permits, and/or orders, including renewals thereof, which are required by governing law to undertake Project Activities affecting the Road.

b. CHPE shall be responsible for ensuring that all debris, garbage, and waste generated by Project Activities are immediately cleaned up and properly are disposed of.

c. CHPE shall not block or obstruct or interfere with the flow of traffic in both lanes of traffic on any Town road except, under severe hardship, a temporary closure lasting no more than four (4) hours. Temporary single lane closures will be permitted periodically during Project Activities taking into account all of the pertinent circumstances, with close coordination with the Town’s Highway Department.

The individuals who have executed this Agreement on behalf of the respective parties expressly represent and warrant that they are authorized to sign on behalf of such entities for the purpose of duly binding such entities to this Agreement.

16. Notice.

Any notice or other communication required or permitted under this Agreement shall be in writing and shall be deemed to have been duly given upon hand delivery, upon the third day following delivery via the United States Postal Service, on the first day following delivery via a nationally registered United States overnight courier service, or on the day when telecopies are sent by facsimile transmission if additional notice is also given under one of the previous three methods within three (3) business days thereafter. For purposes of this Agreement only, any notice to the parties shall be directed to the party as set forth below.

For CHPE:

Champlain Hudson Power Express, Inc.
600 Broadway, Pieter Schuyler Building
Albany, NY 12207
Attn: General Counsel

For Town:

Town Board of the Town of Bethlehem
Town Hall
445 Delaware Avenue
Bethlehem, New York 12054
Attn: Supervisor

17. Assignment.

Neither Party may assign its rights or its obligations under this Agreement in whole or in part without the prior written consent of the other Party, which consent shall not be unreasonably withheld conditioned, or delayed; except no consent of any kind shall be required in the case of an assignment by CHPE (i) in favor of a secured lender or lenders participating in the Closing, (ii) as part of a straight lease arrangement authorized by the General Municipal Law relating to Industrial Development Agencies, or (iii) to a company affiliated with CHPE.

IN WITNESS WHEREOF, CHPE and the Town have caused their respective, duly authorized officers to execute this Road Use and Crossing Agreement of the day and year first above written.

Town of Bethlehem, New York

By: _____



CHPE LLC and CHPE Properties, Inc.

By: _____

William S. Helmer, E. V. P.

Package 5A
Municipal Utility Tables

Champlain Hudson Power Express

Upland Co-Located Utility Summation Matrix

Revision Date: 04/26/2023 -IFC set

Segment(s)	General Location of Utility				Owner	Utility	Utility
	Station (Starting Point for Parallel and Crossing Point for Perpendicular)	Station (Ending Point for Parallel)	Drawing sheet(s) #	HDD Drawing (if any)			Parallel/ Perpendicular
Segment 8 (Package 5A) - CSX- Rotterdam - Bethlehem	50585+20		C—140	C—345	Village of Voorheesville	Water Line	Perpendicular
	50596+70		C—140		Village of Voorheesville	Water Line	Perpendicular
	50609+00		C—141	C—348	Village of Voorheesville	Storm Sewer	Perpendicular
	50609+10		C—141	C—348	Village of Voorheesville	Water Line	Perpendicular
	50609+35		C—141	C—348	Village of Voorheesville	Storm Sewer	Perpendicular

Champlain Hudson Power Express

Upland Co-Located Utility Summation Matrix

Revision Date: 04/26/2023 -IFC set

Segment(s)	General Location of Utility				Owner	Utility	Utility
	Station (Starting Point for Parallel and Crossing Point for Perpendicular)	Station (Ending Point for Parallel)	Drawing sheet(s) #	HDD Drawing (if any)			Parallel/ Perpendicular
Segment 8 (Package 5A) - CSX - Rotterdam - Bethlehem	50009+21	50010+02	C—101	C-301	Town of Rotterdam	Storm Drainage Pipe/Culvert	Parallel
	50013+92		C—101	C-301	Town of Rotterdam	Storm Drainage Pipe/Culvert	Perpendicular
	50076+00	50078+15	C—106		Town of Rotterdam	Water Line	Parallel
	50077+60		C—106		Town of Rotterdam	Water Line	Perpendicular
	50150+65		C—111	C-313	Town of Rotterdam	Water Line	Perpendicular
	50195+18		C—114		Town of Rotterdam	Water Line	Perpendicular

Champlain Hudson Power Express

Upland Co-Located Utility Summation Matrix

Revision Date: 04/26/2023 -IFC set

Segment(s)	General Location of Utility				Owner	Utility	Utility
	Station (Starting Point for Parallel and Crossing Point for Perpendicular)	Station (Ending Point for Parallel)	Drawing sheet(s) #	HDD Drawing (if any)			Parallel/ Perpendicular
	50252+90		C—117		Town of Guilderland	Water Line	Perpendicular
	50307+90		C—121	C—323	Town of Guilderland	Water Line	Perpendicular
	50308+50		C—121	C—323	Town of Guilderland	Water Line	Perpendicular
	50395+20		C—127	C—332	Town of Guilderland	Water Line	Perpendicular
	50395+60		C—127	C—332	Town of Guilderland	Water Line	Perpendicular
	50406+00		C—128		Town of Guilderland	Water Line	Perpendicular
	50407+50		C—128		Town of Guilderland	Water Line	Perpendicular
	50422+60		C—129		Town of Guilderland	Water Line	Perpendicular
	50472+50		C—132		Town of Guilderland	Water Line	Perpendicular

Champlain Hudson Power Express

Upland Co-Located Utility Summation Matrix

Revision Date: 04/26/2023 -IFC set

Segment(s)	General Location of Utility				Owner	Utility	Utility
	Station (Starting Point for Parallel and Crossing Point for Perpendicular)	Station (Ending Point for Parallel)	Drawing sheet(s) #	HDD Drawing (if any)			Parallel/ Perpendicular
	50692+55		C—147	C—353	Town of Bethlehem	Water Line	Perpendicular
	50693+05		C—147	C—353	Town of Bethlehem	Water Line	Perpendicular
	50693+10		C—147	C—353	Town of Bethlehem	Water Line	Perpendicular

Champlain Hudson Power Express

Upland Co-Located Utility Summation Matrix

Revision Date: 04/26/2023 -IFC set

Segment(s)	General Location of Utility				Owner	Utility	Utility
	Station (Starting Point for Parallel and Crossing Point for Perpendicular)	Station (Ending Point for Parallel)	Drawing sheet(s) #	HDD Drawing (if any)			Parallel/ Perpendicular
	50009+80		C—101	C-301	City of Schenectady Water	Water Line	Perpendicular
	50020+97		C—102	C-302	City of Schenectady Water	Water Line	Perpendicular