

CHAMPLAIN HUDSON POWER EXPRESS

SEGMENT 3 (PACKAGE 1C) - WHITEHALL TO FORT ANN

WASHINGTON COUNTY, NEW YORK

CI OWNER SUBMISSION

(JULY 8, 2022)

NOTES TO CO-LOCATED INFRASTRUCTURE REVIEWERS:

Please review the attached information regarding the CHPE alignment relating to your infrastructure and provide your concurrence of the Project's cables separation and alignment and any feedback to ben.cole@wsp.com. It is important to TDI that the construction and operation of the CHPE does not interfere with the continued operation of your infrastructure.

See applicable locations depicting crossing(s) and/or parallel interactions with assets owned by your organization. Specific details applicable to each crossing are currently being developed and will depend on depth of existing co-located infrastructure and other site conditions identified in the field. However, Utility Typical Separation Details are presented on Drawing No. C-901 for your review and discussion initiation.

The basis of design for this package as it relates to the proposed Horizontal and Vertical underground separations from all Co-Located Infrastructure is 5' (H) and 2' (V). These separation distances are to be maintained as a minimum at all times and any variances (i.e. closer) will be presented to your organization prior to implementation and called out specifically on the plans.

Note that there may be some gaps in the pages provided, this is intentional as some of the pages do not present assets owned by your organization. In addition, please see attached the Champlain Hudson Power Express "Upland Co-Located Utility Summation Matrix" for the location (by Station) of assets that may interact with the proposed project.



SITE LOCATION MAP
SCALE: 1" = 5000'



NOT FOR CONSTRUCTION



IT IS A VIOLATION OF LAW FOR ANY PERSON, UNLESS THEY ARE ACTING UNDER THE DIRECTION OF A LICENSED PROFESSIONAL ENGINEER, ARCHITECT, LANDSCAPE ARCHITECT OR LAND SURVEYOR TO ALTER AN ITEM IN ANY WAY. IF AN ITEM BEARING THE STAMP OF A LICENSED PROFESSIONAL IS ALTERED, THE ALTERING ENGINEER, ARCHITECT, LANDSCAPE ARCHITECT OR LAND SURVEYOR SHALL STAMP THE DOCUMENT AND INCLUDE THE NOTATION "ALTERED BY" FOLLOWED BY THEIR SIGNATURE, THE DATE OF SUCH ALTERATION, AND A SPECIFIC DESCRIPTION OF THE ALTERATION.

A	07/08/2021	EM&CP REGULATORY SUBMISSION	JM	JR	
No.	DATE	SUBMITTAL / REVISION DESCRIPTION	DB	APP	

CHAMPLAIN HUDSON POWER EXPRESS
SEGMENT 3 (PACKAGE 1C) WHITEHALL TO FORT ANN
COVER SHEET

DRAWN BY: JTM DESIGNED BY: JTM APPROVED BY: JPR SCALE AS NOTED DATE 07/08/2022
REV. NO. SH.NO. XXX OF XXX

KIEWIT PROJECT NO.	21162
CHA PROJECT NO.	066076
DRAWING NO.	G-000
DATE	07/08/2022
SH.NO.	XXX OF XXX

File: V:\PROJECTS\ANY\K6\066076.000\09_DESIGN\DRAWINGS\01_SHEETS\DESIGN PACKAGE 1C\066076_1C_G-001.DWG Saved: 7/7/2022 2:41:41 PM Plotted: 7/7/2022 3:35:32 PM Current User: Evans, Josh LastSavedBy: 4894

SHEET LIST TABLE	
SHEET NUMBER	SHEET TITLE
PACKAGE 6: GENERAL SHEETS	
G-000	COVER SHEET
G-001	SHEET INDEX
G-002	GENERAL NOTES
G-003	LEGEND
G-004	KEY PLAN
PACKAGE 6: PLAN AND PROFILE SHEETS	
C-119	STA: 15270+00 TO 15285+00 PLAN AND PROFILE
PACKAGE 6: DETAILS	
C-621	TRENCHING DETAILS
C-901	UTILITY TYPICAL SEPARATION DETAILS



IT IS A VIOLATION OF LAW FOR ANY PERSON, UNLESS THEY ARE ACTING UNDER THE DIRECTION OF A LICENSED PROFESSIONAL ENGINEER, ARCHITECT, LANDSCAPE ARCHITECT OR LAND SURVEYOR TO ALTER AN ITEM IN ANY WAY. IF AN ITEM BEARING THE STAMP OF A LICENSED PROFESSIONAL IS ALTERED, THE ALTERING ENGINEER, ARCHITECT, LANDSCAPE ARCHITECT OR LAND SURVEYOR SHALL STAMP THE DOCUMENT AND INCLUDE THE NOTATION "ALTERED BY" FOLLOWED BY THEIR SIGNATURE, THE DATE OF SUCH ALTERATION, AND A SPECIFIC DESCRIPTION OF THE ALTERATION.

A	07/08/2021	EM&CP REGULATORY SUBMISSION	JM	JR	
No.	DATE	SUBMITTAL / REVISION DESCRIPTION	DB	APP	

CHAMPLAIN HUDSON POWER EXPRESS
SEGMENT 3 (PACKAGE 1C) WHITEHALL TO FORT ANN
SHEET INDEX

DRAWN BY: xxxDESIGNED BY: xxxAPPROVED BY: xxxSCALE AS NOTED
REV. NO. X

KIEWIT PROJECT NO.	21162
CHA PROJECT NO.	066076
DRAWING NO.	G-001
DATE	07/08/2022
SH.NO.	XXX OF XXX

SURVEY NOTES:

1. A ROW, UTILITY & WETLAND SURVEY PREPARED IN THE FIELD BY CONTROL POINT ASSOCIATES, INC., AND OTHER REFERENCE MATERIAL AS LISTED HEREON.
2. ELEVATIONS REFER TO THE NORTH AMERICAN VERTICAL DATUM OF 1988 (NAVD88), BASED ON GPS OBSERVATIONS TAKEN AT THE TIME OF THE SURVEY.
3. NORTH ORIENTATION SHOWN REFERS TO THE NAD83 STATE PLANE COORDINATE SYSTEM - NEW YORK EAST ZONE BASED ON GPS OBSERVATIONS TAKEN AT THE TIME OF THE FIELD SURVEY.
4. LOCATION OF UNDERGROUND UTILITIES ARE APPROXIMATE. LOCATIONS AND SIZES ARE BASED ON UTILITY MARK-OUTS, ABOVE GROUND STRUCTURES THAT WERE VISIBLE & ACCESSIBLE IN THE FIELD, AND THE MAPS AS LISTED IN THE REFERENCES AVAILABLE AT THE TIME OF THE SURVEY. AVAILABLE ASBUILT PLANS AND UTILITY MARKOUT DOES NOT ENSURE MAPPING OF ALL UNDERGROUND UTILITIES AND STRUCTURES. BEFORE ANY EXCAVATION IS TO BEGIN, ALL UNDERGROUND UTILITIES SHOULD BE VERIFIED AS TO THEIR LOCATION, SIZE AND TYPE BY THE PROPER UTILITY COMPANIES. CONTROL POINT ASSOCIATES, INC. DOES NOT GUARANTEE THE UTILITIES SHOWN COMPRISE ALL SUCH UTILITIES IN THE AREA EITHER IN SERVICE OR ABANDONED.

SUBSURFACE UTILITY ENGINEERING NOTES:

A QUALITY LEVEL SYSTEM IS UTILIZED TO IDENTIFY THE SOURCE OF THE UNDERGROUND UTILITY INFORMATION. THE METHOD OF DETERMINATION IS BASED ON CONTRACTUAL AGREEMENT WITH THE CLIENT AND IS DEPICTED ON THE SURVEY BY THE LINE TYPES SHOWN IN THE DRAWING LEGEND. FOR REFERENCE, THE QUALITY LEVELS ARE AS FOLLOWS:

QUALITY LEVEL B – UTILITY LOCATION DATA IS COLLECTED THROUGH GEOPHYSICAL SENSING TECHNOLOGY TO SUPPLEMENT SURFACE FEATURES AND OR REFERENCE MAPPING. INCLUDES MARKOUT BY CONTROL POINT ASSOCIATES, INC.

PEM - PALUSTRINE EMERGENT
 PSS - PALUSTRINE SCRUB-SHRUB
 PFO - PALUSTRINE FORESTED
 PUB - PALUSTRINE UNCONSOLIDATED BOTTOM
 L1 - LACUSTRINE LIMNETIC
 L2 - LACUSTRINE LITTORAL
 PROP. NYSDEC FWW 100-FOOT ADJACENT AREA
 PROP. GIS - WETLAND
 PROP. JD BOUNDARY
 PROP. WETLAND PROTECTION FENCE
 PROP. COMPOST FILTER SOCK (OR SILT SOCK)
 PROP. LIMITS OF WORK/DISTURBANCE
 PROP. LIMITS OF CLEARING/LIMITS OF WORK IN CLEARING AREAS
 PROP. CONCRETE WASHOUT
 PROP. ACCESS ROADS
 PROP. SPLICE VAULT
 PROP. LINK BOX HANDHOLE
 PROP. FIBER SPLICE HANDHOLE
 PROP. BORING LOCATION
 PROP. ALIGNMENT STATIONING
 PROP. RIGHT-OF-WAY
 PROP. ABUTTER
 PROP. ALIGNMENT CENTERLINE

APP	APPROVED
CL	CENTERLINE
CMP	CORRUGATED METAL PIPE
CONC	CONCRETE
DB	DESIGNED BY
DEC	NEW YORK STATE DEPARTMENT OF ENVIRONMENTAL CONSERVATION
DEG	DEGREES
DR	DRIVE
DZ	DEVIATION ZONE
E	EASTING
ELECTRIC	ELECTRIC CABLE
ELEV	ELEVATION
FIBER	FIBER OPTIC CABLE
FT	FEET
GAS	GAS PIPE
H	HORIZONTAL
HDD	HORIZONTAL DIRECTIONAL DRILLING
HVDC	HIGH-VOLTAGE DIRECT CURRENT TRANSMISSION LINE
INV	INVERT ELEVATION
LOW	LIMITS OF WORK
MAX	MAXIMUM
MIN	MINIMUM
N	NORTHING
NO	NUMBER
NY	NEW YORK
P#	PACKAGE #
PVC	POLYVINYL CHLORIDE
PVI	POINT OF VERTICAL INTERSECTION
R	RADIUS
RCP	REINFORCED CONCRETE PIPE
RD	ROAD
REV	REVISION
ROW	RIGHT-OF-WAY
RTE	ROUTE
SEWER	SANITARY SEWER PIPE
SH	SHEET
ST	STREET
STA	STATION
STORM	STORM DRAIN PIPE
TELECOM	TELECOMMUNICATIONS CABLE
TEMP	TEMPORARY
TR	THERMAL RESISTIVITY
TYP	TYPICAL
V	VERTICAL
WATER	WATERLINE

UTILITY LOCATION DATA IS COLLECTED THROUGH GEOPHYSICAL SENSING TECHNOLOGY TO IDENTIFY SUBSURFACE FEATURES AND OR STRUCTURE MAPPING. INCLUDES MARKOUT BY UTILITY POINT ASSOCIATES, INC.				
A	07/08/2021	EM&CP REGULATORY SUBMISSION	JM	JR
No.	DATE	SUBMITTAL / REVISION DESCRIPTION	DB	APP

CHAMPLAIN HUDSON POWER EXPRESS

SEGMENT 3 (PACKAGE 1C) WHITEHALL TO FORT ANN

LEGEND

DRAWN BY: XXX			DESIGNED BY: XXX			APPROVED BY: XXX			SCALE	AS NOTED	DATE	07/08/2022
									REV. NO.	X	SH.NO.	XXX OF XXX

File: V:\PROJECTS\ANY\6\066076.000\09_DESIGN\DRAWINGS\01_SHEETS\DESIGN PACKAGE 1C\066076_1C_G-005.DWG Saved: 7/8/2022 11:08:35 AM Plotted: 7/8/2022 11:09:28 AM Current User: Evans, Josh LastSavedBy: 4894



PLAN AND PROFILE KEY MAP
SCALE: 1" = 2000'



IT IS A VIOLATION OF LAW FOR ANY PERSON, UNLESS THEY ARE ACTING UNDER THE DIRECTION OF A LICENSED PROFESSIONAL ENGINEER, ARCHITECT, LANDSCAPE ARCHITECT OR LAND SURVEYOR TO ALTER AN ITEM IN ANY WAY. IF AN ITEM BEARING THE STAMP OF A LICENSED PROFESSIONAL IS ALTERED, THE ALTERING ENGINEER, ARCHITECT, LANDSCAPE ARCHITECT OR LAND SURVEYOR SHALL STAMP THE DOCUMENT AND INCLUDE THE NOTATION "ALTERED BY" FOLLOWED BY THEIR SIGNATURE, THE DATE OF SUCH ALTERATION, AND A SPECIFIC DESCRIPTION OF THE ALTERATION.

A	07/08/2021	EM&CP REGULATORY SUBMISSION	JM	JR					
No.	DATE	SUBMITTAL / REVISION DESCRIPTION	DB	APP					

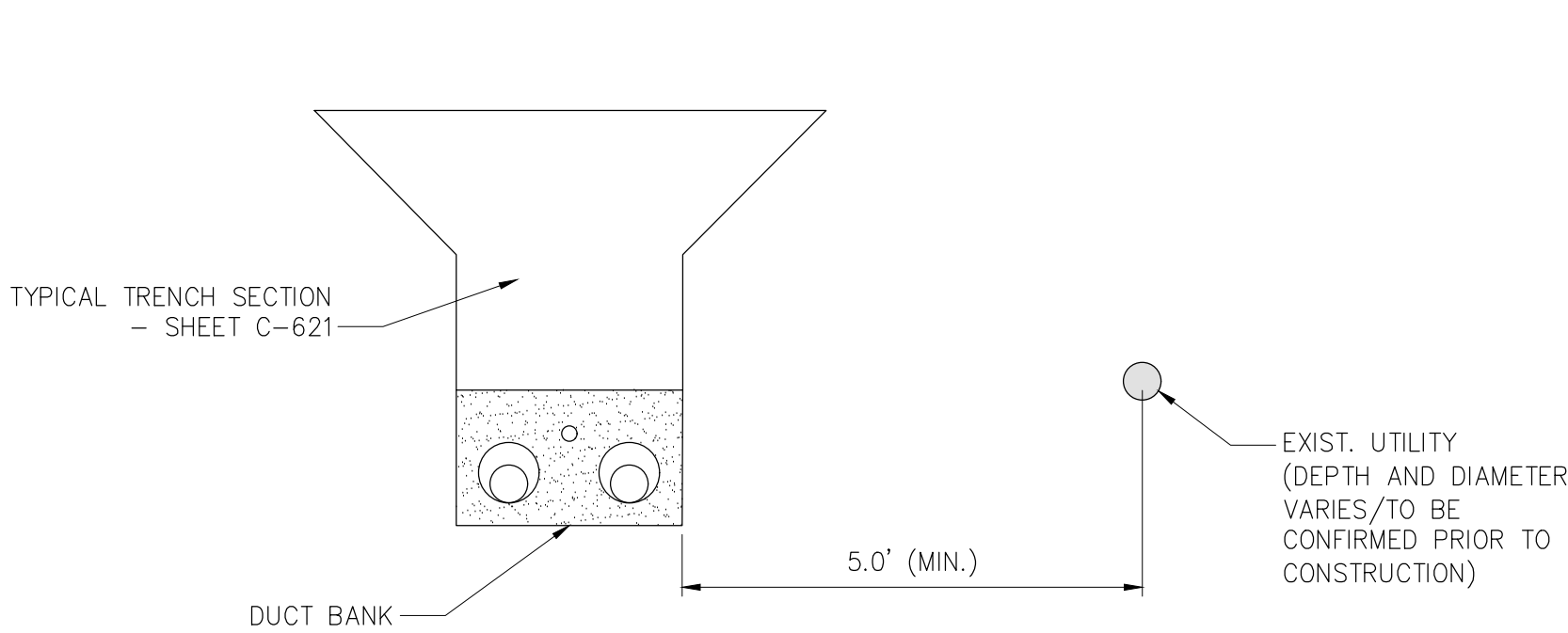
CHAMPLAIN HUDSON POWER EXPRESS
SEGMENT 3 (PACKAGE 1C) WHITEHALL TO FORT ANN
KEYPLAN

DRAWN BY: xxx DESIGNED BY: xxx APPROVED BY: xxx SCALE AS NOTED DATE 07/08/2022
X SH.NO. XXX OF XXX

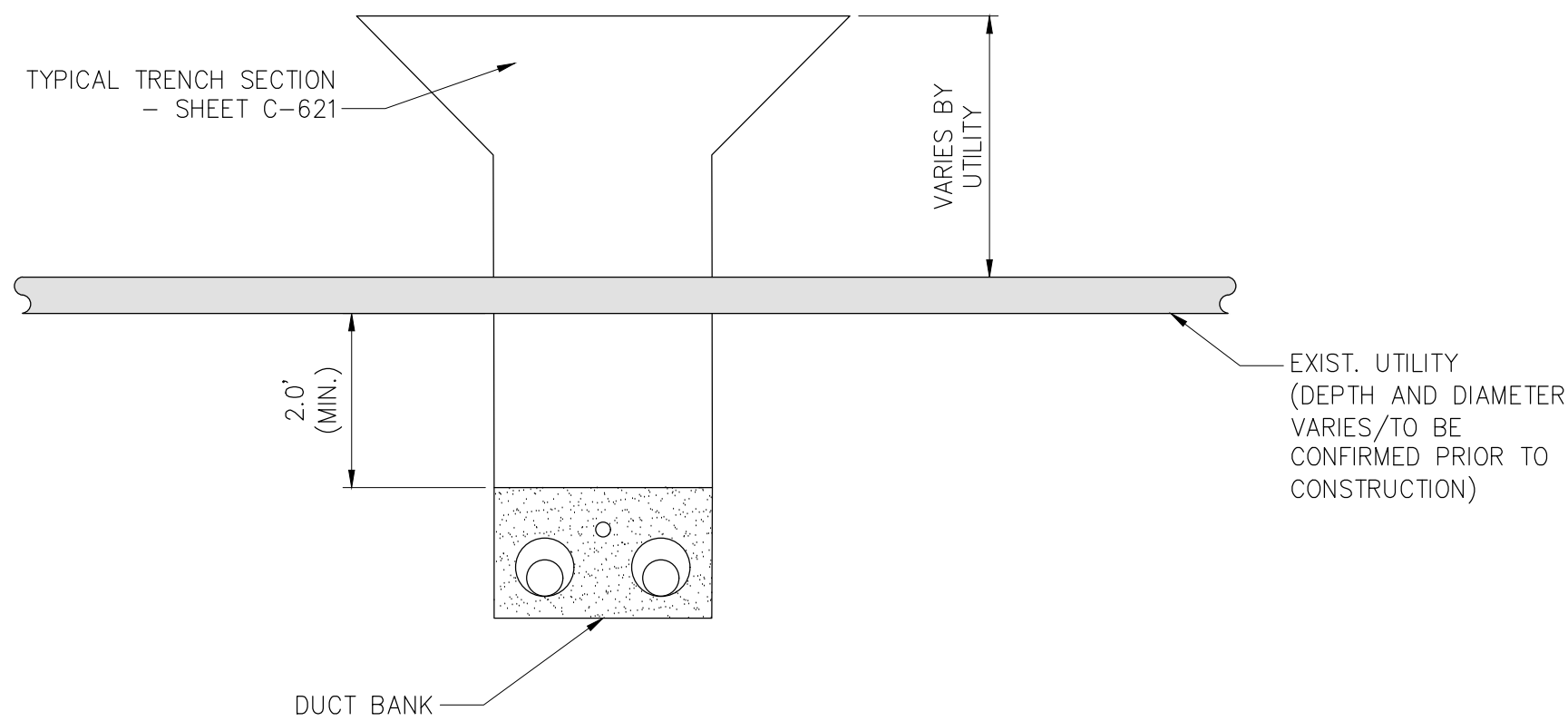
KIEWIT PROJECT NO.	21162
CHA PROJECT NO.	066076
DRAWING NO.	G-004
DATE	07/08/2022
SH.NO.	XXX OF XXX



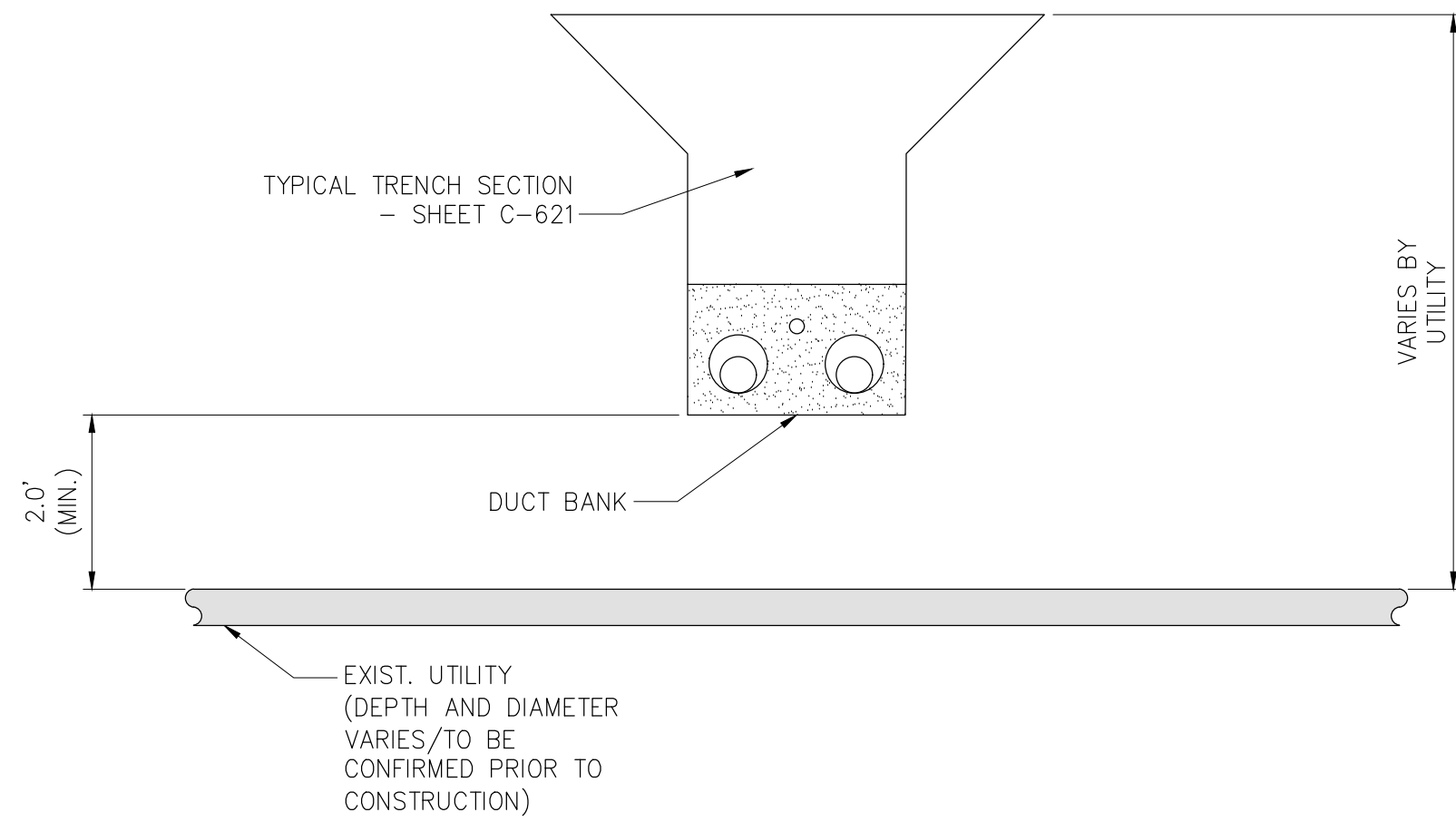
File: P:\PROJECTS\KIE-CHPE\3-DES\95 WP\3-OTERO\066076_P1A - C-901.DWG Saved: 4/13/2022 10:30:08 AM Plotted: 6/20/2022 12:05:29 PM Current User: William Otero Last Saved By: William Otero



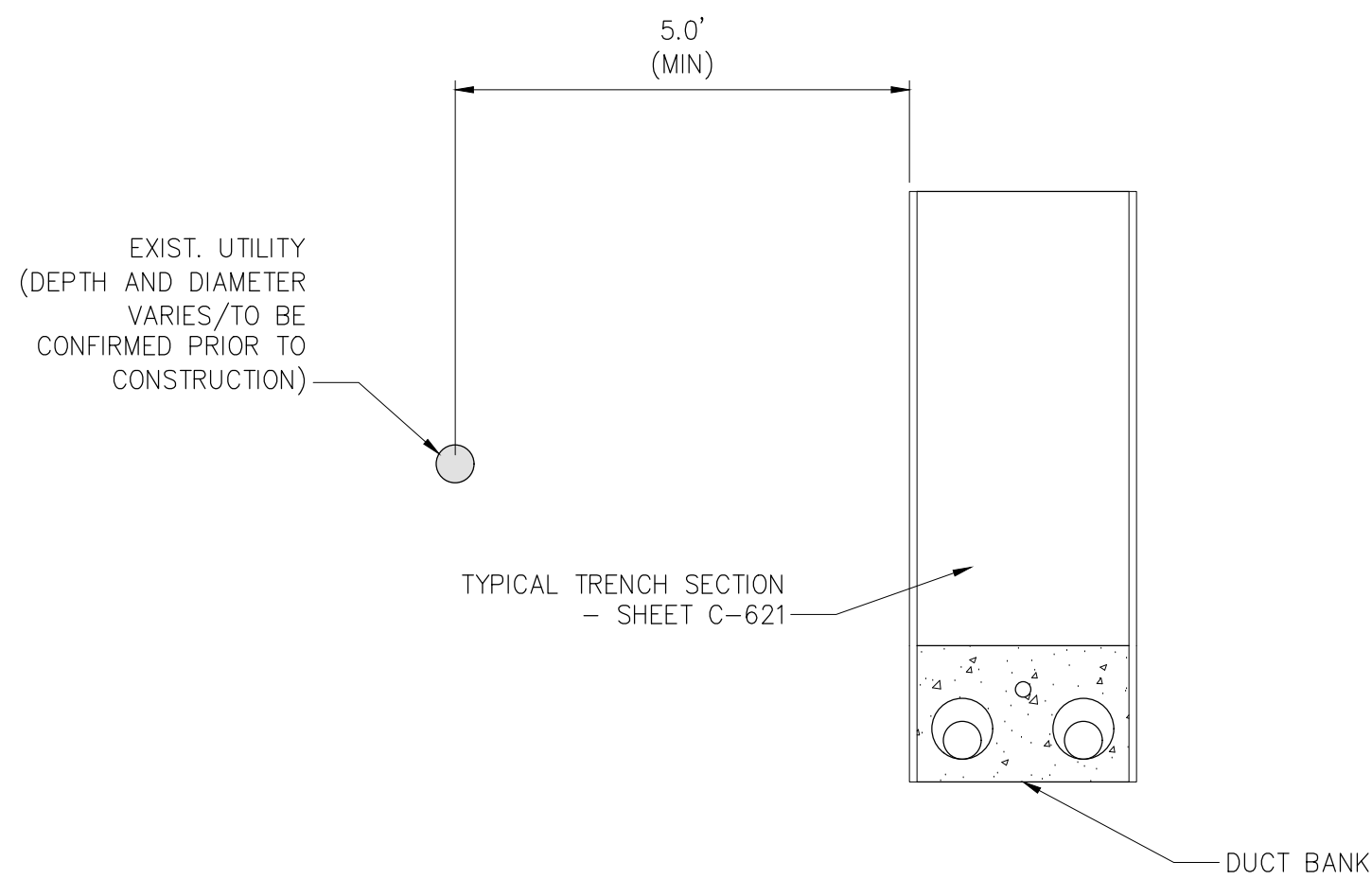
1 OPEN TRENCH - HORIZONTAL SEPARATION
NOT TO SCALE



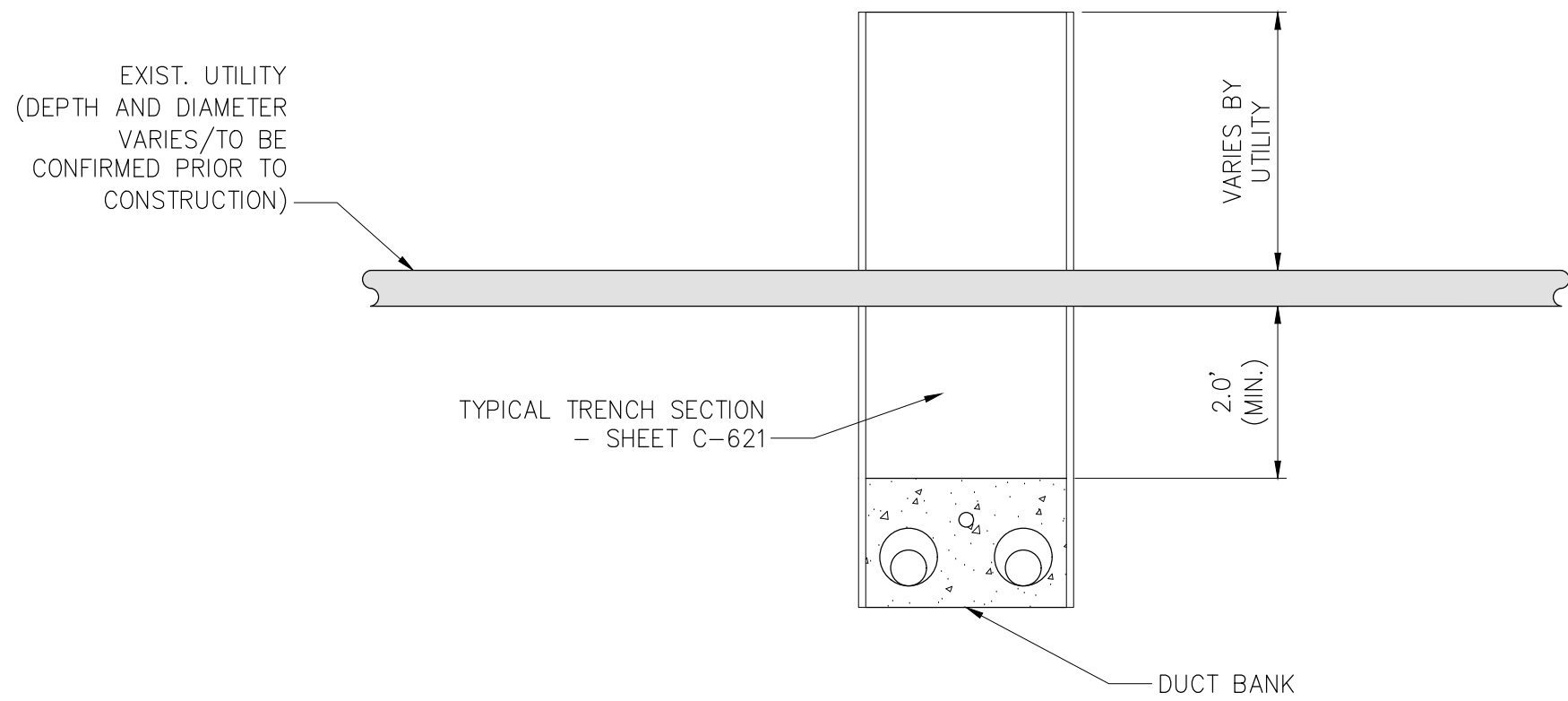
3 OPEN TRENCH - VERTICAL SEPARATION (UNDER)
NOT TO SCALE



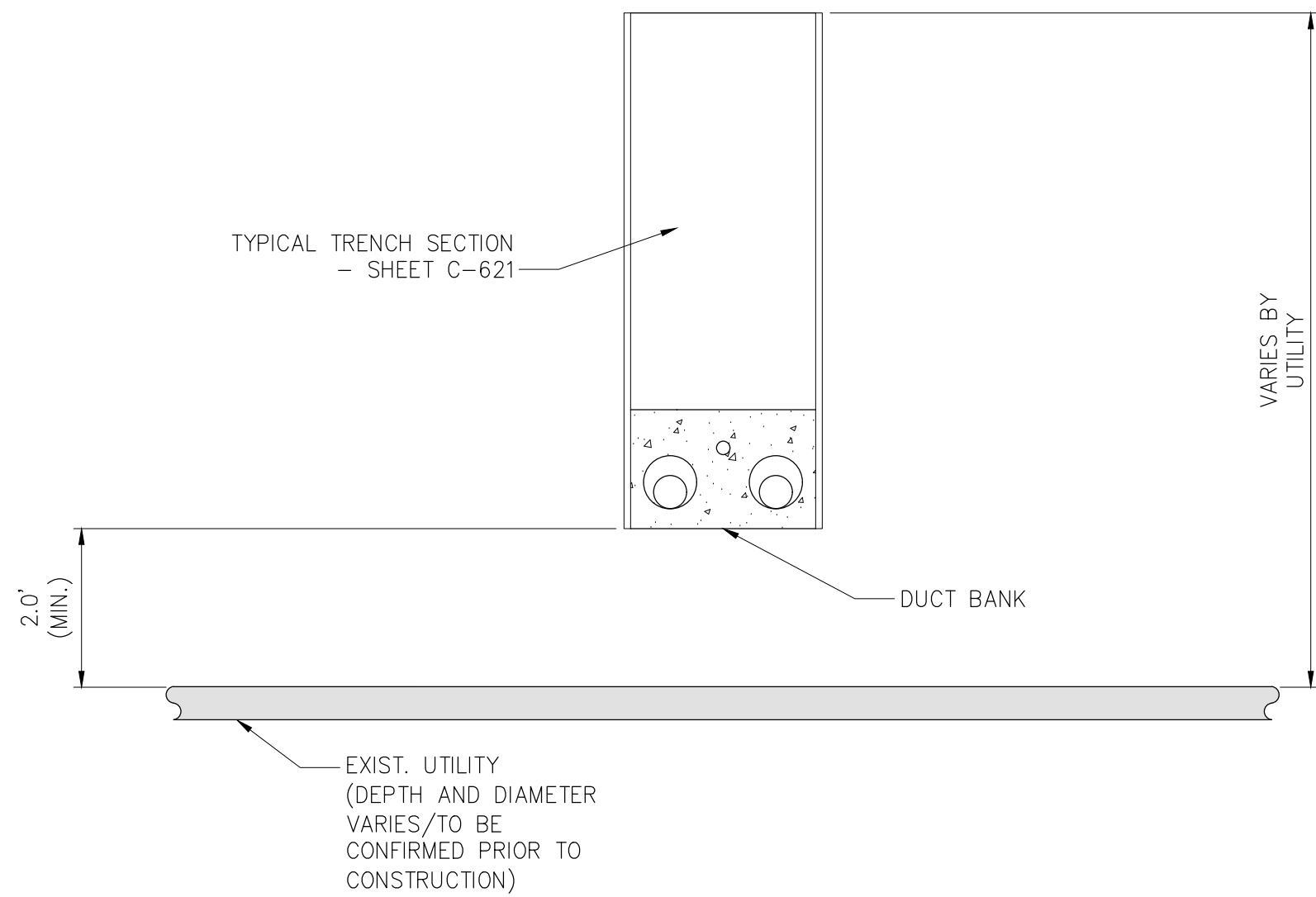
5 OPEN TRENCH - VERTICAL SEPARATION (OVER)
NOT TO SCALE



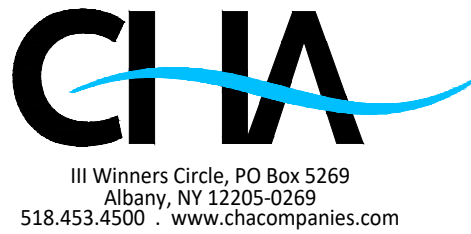
2 TYPICAL DUCTBANK IN ROADWAY - HORIZONTAL SEPARATION
NOT TO SCALE



4 TYPICAL DUCTBANK IN ROADWAY - VERTICAL SEPARATION (UNDER)
NOT TO SCALE



6 TYPICAL DUCTBANK IN ROADWAY - VERTICAL SEPARATION (OVER)
NOT TO SCALE



IT IS A VIOLATION OF LAW FOR ANY PERSON, UNLESS THEY ARE ACTING UNDER THE DIRECTION OF A LICENSED PROFESSIONAL ENGINEER, ARCHITECT, LANDSCAPE ARCHITECT OR LAND SURVEYOR TO ALTER AN ITEM IN ANY WAY. IF AN ITEM BEARING THE STAMP OF A LICENSED PROFESSIONAL IS ALTERED, THE ALTERING ENGINEER, ARCHITECT, LANDSCAPE ARCHITECT OR LAND SURVEYOR SHALL STAMP THE DOCUMENT AND INCLUDE THE NOTATION "ALTERED BY" FOLLOWED BY THEIR SIGNATURE, THE DATE OF SUCH ALTERATION, AND A SPECIFIC DESCRIPTION OF THE ALTERATION.

A	07/08/2022	EM&CP REGULATORY SUBMISSION	JM	JR	
No.	DATE	SUBMITTAL / REVISION DESCRIPTION	DB	APP	

**CHAMPLAIN HUDSON POWER EXPRESS
SEGMENT 3 (PACKAGE 1C) WHITEHALL TO FORT ANN**
**UTILITY TYPICAL
SEPARATION DETAILS**

DRAWN BY:	wso	DESIGNED BY:	wso	APPROVED BY:		SCALE	AS NOTED	DATE	07/08/2022
						REV. NO.	A	SH.NO.	XXX OF XXX

KIEWIT PROJECT NO.	21162
CHA PROJECT NO.	066076
DRAWING NO.	C-901