

**APPENDIX C:  
PLAN & PROFILE DRAWINGS, EROSION  
AND SEDIMENT CONTROL PLANS, AND  
MAINTENANCE AND PROTECTION OF  
TRAFFIC PLANS  
CASE 10-T-0139**



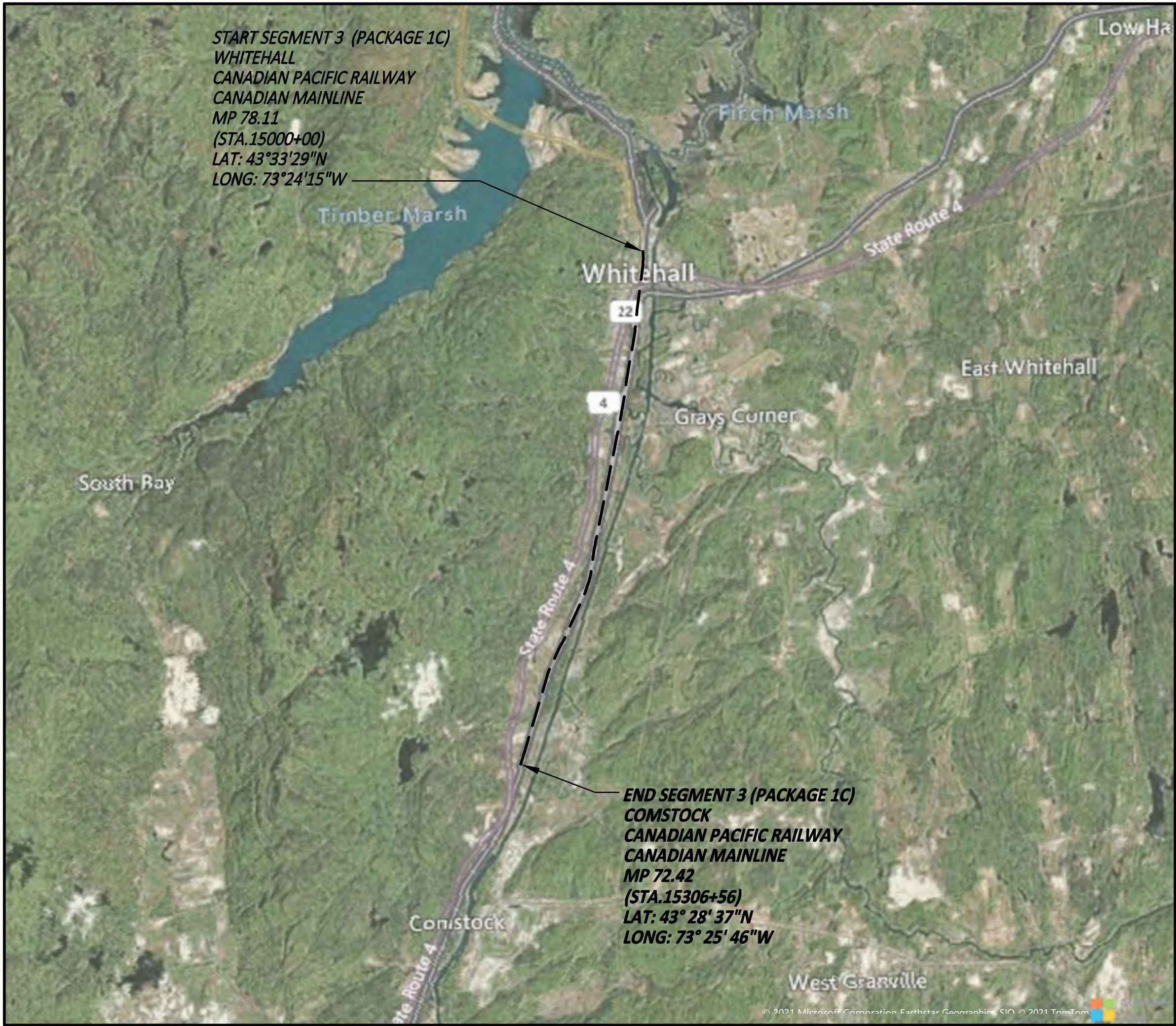
# CHAMPLAIN HUDSON POWER EXPRESS

## SEGMENT 3 (PACKAGE 1C) - WHITEHALL TO FORT ANN

WASHINGTON COUNTY, NEW YORK

ISSUED FOR CONSTRUCTION SUBMISSION

(MARCH 22, 2023)



SITE LOCATION MAP  
SCALE: 1" = 5000'



IT IS A VIOLATION OF LAW FOR ANY PERSON, UNLESS THEY ARE ACTING UNDER THE DIRECTION OF A LICENSED PROFESSIONAL ENGINEER, ARCHITECT, LANDSCAPE ARCHITECT OR LAND SURVEYOR TO ALTER AN ITEM IN ANY WAY. IF AN ITEM BEARING THE STAMP OF A LICENSED PROFESSIONAL IS ALTERED, THE ALTERING ENGINEER, ARCHITECT, LANDSCAPE ARCHITECT OR LAND SURVEYOR SHALL STAMP THE DOCUMENT AND INCLUDE THE NOTATION "ALTERED BY" FOLLOWED BY THEIR SIGNATURE, THE DATE OF SUCH ALTERATION, AND A SPECIFIC DESCRIPTION OF THE ALTERATION.

0	03/22/2023	ISSUED FOR CONSTRUCTION SUBMISSION	JTM	JPR	
No.	DATE	SUBMITTAL / REVISION DESCRIPTION	DB	APP	

CHAMPLAIN HUDSON POWER EXPRESS  
SEGMENT 3 (PACKAGE 1C ) WHITEHALL TO FORT ANN  
COVER SHEET

KIEWIT PROJECT NO.	21162
CHA PROJECT NO.	066076
DRAWING NO.	G-000
DATE	03/22/2023

DRAWN BY: JJE DESIGNED BY: JTM APPROVED BY: JPR SCALE AS NOTED REV. NO. X



File: V:\PROJECTS\ANY\6\066076\_000\B9\_DESIGN\DRAWINGS\01\_SHEETS\DESIGN PACKAGE 1C\066076\_1C\_G-001.DWG Saved: 3/16/2023 10:57:14 AM Plotted: 3/17/2023 8:28:39 AM Current User: Bouillon, Hugo LastSavedBy: 3042

SHEET LIST TABLE	
Sheet Number	Sheet Title
PACKAGE 1C: GENERAL SHEETS	
G-000	COVER SHEET
G-001	SHEET INDEX
G-002	GENERAL NOTES
G-003	PACKAGE SPECIFIC NOTES
G-004	LEGEND AND ABBREVIATIONS
G-005	PLAN AND PROFILE KEYPLAN
G-011	EM&CP DATA TABLES (1 OF 3)
G-012	EM&CP DATA TABLES (2 OF 3)
G-013	EM&CP DATA TABLES (3 OF 3)
G-020	RESTORATION NOTES
PACKAGE 1C: PLAN AND PROFILE SHEETS	
C-101	STA. 15000+00 TO STA 15015+00 PLAN AND PROFILE
C-102	STA. 15015+00 TO STA 15030+00 PLAN AND PROFILE
C-103	STA. 15030+00 TO STA 15045+00 PLAN AND PROFILE
C-104	STA. 15045+00 TO STA 15060+00 PLAN AND PROFILE
C-105	STA. 15060+00 TO STA 15075+00 PLAN AND PROFILE
C-106	STA. 15075+00 TO STA 15090+00 PLAN AND PROFILE
C-107	STA. 15090+00 TO STA 15105+00 PLAN AND PROFILE
C-108	STA. 15105+00 TO STA 15120+00 PLAN AND PROFILE
C-109	STA. 15120+00 TO STA 15135+00 PLAN AND PROFILE
C-110	STA. 15135+00 TO STA 15150+00 PLAN AND PROFILE
C-111	STA. 15150+00 TO STA 15165+00 PLAN AND PROFILE
C-112	STA. 15165+00 TO STA 15180+00 PLAN AND PROFILE
C-113	STA. 15180+00 TO STA 15195+00 PLAN AND PROFILE
C-114	STA. 15195+00 TO STA 15210+00 PLAN AND PROFILE
C-115	STA. 15210+00 TO STA 15225+00 PLAN AND PROFILE
C-116	STA. 15225+00 TO STA 15240+00 PLAN AND PROFILE
C-117	STA. 15240+00 TO STA 15255+00 PLAN AND PROFILE
C-118	STA. 15255+00 TO STA 15270+00 PLAN AND PROFILE
C-119	STA. 15270+00 TO STA 15285+00 PLAN AND PROFILE
C-120	STA. 15285+00 TO STA. 15300+00 PLAN AND PROFILE
C-121	STA. 15300+00 TO STA. 15306+59 PLAN AND PROFILE
PACKAGE 1C: ACCESS AND CONSTRUCTION STAGING PLANS	
C-210	ACCESS ROAD OFF POULTNEY STREET AT STA. 15036+50
C-211	ACCESS ROAD OFF NYS ROUTE 4 AT STA. 15069+00
C-212	ACCESS ROAD OFF NYS ROUTE 4 AT STA. 15165+00
C-213	ACCESS ROAD OFF OLD STATE ROAD AT STA. 15196+00
C-214	ACCESS ROAD OFF NYS ROUTE 4 AT STA. 15240+00
C-215	ACCESS ROAD OFF NYS ROUTE 4 AT STA. 15297+00
PACKAGE 1C: HDD TRENCHLESS PLANS	
C-301	PLAN AND PROFILE - HDD 3, CONDUIT 1
C-301.1	PLAN AND PROFILE - HDD 3, CONDUIT 1
C-301A	PLAN AND PROFILE - HDD 3, CONDUIT 2
C-301A.1	PLAN AND PROFILE - HDD 3, CONDUIT 2
C-302	PLAN AND PROFILE - HDD 4, CONDUIT 1
C-302A	PLAN AND PROFILE - HDD 4, CONDUIT 2
C-303	PLAN AND PROFILE - HDD 4A, CONDUIT 1
C-303A	PLAN AND PROFILE - HDD 4A, CONDUIT 2
C-304	PLAN AND PROFILE - HDD 5, CONDUIT 1
C-304A	PLAN AND PROFILE - HDD 5, CONDUIT 2
C-305	PLAN AND PROFILE - HDD 6, CONDUIT 1
C-305.1	PLAN AND PROFILE - HDD 6, CONDUIT 1
C-305A	PLAN AND PROFILE - HDD 6, CONDUIT 2
C-305A.1	PLAN AND PROFILE - HDD 6, CONDUIT 2
C-306	PLAN AND PROFILE - HDD 7, CONDUIT 1
C-306.1	PLAN AND PROFILE - HDD 7, CONDUIT 1
C-306A	PLAN AND PROFILE - HDD 7, CONDUIT 2
C-306A.1	PLAN AND PROFILE - HDD 7, CONDUIT 2
C-307	PLAN AND PROFILE - HDD 8, CONDUIT 1
C-307A	PLAN AND PROFILE - HDD 8, CONDUIT 2
PACKAGE 1C: EROSION AND SEDIMENT CONTROL PLANS	
C-400	E&S KEY PLAN
C-401	STA. 15000+00 TO STA. 15030+00 EROSION AND SEDIMENT CONTROL PLAN
C-402	STA. 15030+00 TO STA. 15060+00 EROSION AND SEDIMENT CONTROL PLAN
C-403	STA. 15060+00 TO STA. 15090+00 EROSION AND SEDIMENT CONTROL PLAN
C-404	STA. 15090+00 TO STA. 15120+00 EROSION AND SEDIMENT CONTROL PLAN
C-405	STA. 15120+00 TO STA. 15150+00 EROSION AND SEDIMENT CONTROL PLAN
C-406	STA. 15150+00 TO STA. 15180+00 EROSION AND SEDIMENT CONTROL PLAN

C-407	STA. 15180+00 TO STA. 15210+00 EROSION AND SEDIMENT CONTROL PLAN
C-408	STA. 15210+00 TO STA. 15240+00 EROSION AND SEDIMENT CONTROL PLAN
C-409	STA. 15240+00 TO STA. 15270+00 EROSION AND SEDIMENT CONTROL PLAN
C-410	STA. 15270+00 TO STA. 15300+00 EROSION AND SEDIMENT CONTROL PLAN
C-411	STA. 15300+00 TO STA. 15306+59 EROSION AND SEDIMENT CONTROL PLAN
PACKAGE 1C: MAINTENANCE AND PROTECTION OF TRAFFIC PLANS	
C-501	WORK ZONE TRAFFIC CONTROL NOTES LEGEND AND ABBREVIATIONS
C-502	WORK ZONE TRAFFIC CONTROL DETAILS
C-503	WORK ZONE TRAFFIC CONTROL DETAILS
C-504	WORK ZONE TRAFFIC CONTROL DETAILS
PACKAGE 1C: DETAILS: ESC DETAILS	
C-601	EROSION AND SEDIMENT CONTROL DETAILS
C-602	EROSION AND SEDIMENT CONTROL DETAILS
C-603	EROSION AND SEDIMENT CONTROL DETAILS
PACKAGE 1C: DETAILS: EM&CP DETAILS	
C-611	WETLAND CROSSING DETAILS
C-612	WATERBAR DETAILS
PACKAGE 1C: DETAILS: CONSTRUCTION AND INSTALLATION DETAILS	
C-621	TRENCHING DETAILS
C-622	TYPICAL ACCESS ROAD CROSS SECTIONS
C-623	TYPICAL ACCESS ROAD CROSS SECTIONS
C-624	TYPICAL CULVERT SECTION (1 OF 3)
C-625	TYPICAL CULVERT SECTION (2 OF 3)
C-626	TYPICAL CULVERT SECTION (3 OF 3)
PACKAGE 1C: DETAILS: RESTORATION DETAILS	
C-631	SURFACE RESTORATION DETAILS
PACKAGE 1C: DETAILS: HDD DETAILS	
C-641	RAIL CROSS SECTION DETAILS HDD 3
C-641.1	RAIL CROSS SECTION DETAILS HDD 3
C-642	RAIL CROSS SECTION DETAILS HDD 4
C-642.1	RAIL CROSS SECTION DETAILS HDD 4
C-643	RAIL CROSS SECTION DETAILS HDD 4A
C-643.1	RAIL CROSS SECTION DETAILS HDD 4A
C-644	RAIL CROSS SECTION DETAILS HDD 5
C-644.1	RAIL CROSS SECTION DETAILS HDD 5
C-645	RAIL CROSS SECTION DETAILS HDD 6
C-645.1	RAIL CROSS SECTION DETAILS HDD 6
C-646	RAIL CROSS SECTION DETAILS HDD 7
C-646.1	RAIL CROSS SECTION DETAILS HDD 7
C-647	RAIL CROSS SECTION DETAILS HDD 8
C-647.1	RAIL CROSS SECTION DETAILS HDD 8
PACKAGE 1C: STRUCTURAL DETAILS	
S-711	FRP LINK BOX HANDHOLES
S-720	SELF-SUPPORTING STRUCTURE OVER UTILITIES
S-721	SELF-SUPPORTING STRUCTURE DETAILS
S-740	WALL PLAN & ELEVATION I
S-741	WALL PLAN AND ELEVATION II
S-742	WALL PLAN AND ELEVATION III
S-743	WALL PLAN AND ELEVATION IV
S-744	WALL PLAN AND ELEVATION V
S-745	WALL ATTACHMENT SECTION I
S-746	WALL ATTACHMENT SECTIONS II
S-747	WALL ATTACHMENT SECTIONS III
S-748	WALL ATTACHEMENT TRANSITION DETAIL
S-771	FRP COMMUNICATIONS HANDHOLES
PACKAGE 1C: ELECTRICAL DETAILS	
C-801	ABOVE GROUND MARKING DETAILS
C-807	SPLICE VAULT AND CABLE MARKING DETAILS
C-808	TYPICAL OPEN PIT SPLICE CASING DETAILS
C-809	OPEN PIT SPLICE GROUNDING DETAILS
C-811	STEEL SUPPORT DETAILS
PACKAGE 1C: COMMUNICATION DETAILS	
C-853	OPEN VAULT WITH FIBER OPTIC HAND HOLE
C-854	FIBER OPTIC HAND HOLE DETAILS
C-855	FIBER OPTIC SPLICE DIAGRAM
C-856	FIBER OPTIC SLACK ENCLOSURE DETAIL
PACKAGE 1C: UTILITIES	
C-901	UTILITY TYPICAL SEPARATION DETAILS

CHAMPLAIN HUDSON POWER EXPRESS  
SEGMENT 3 ( PACKAGE 1C ) WHITEHALL TO FORT ANN

SHEET INDEX

KIEWIT PROJECT NO.  
21162

CHA PROJECT NO.  
066076

DRAWING NO.  
G-001

DRAWN BY: JJE

DESIGNED BY: JTM

APPROVED BY: JPR

SCALE AS NOTED

REV. NO. X

DATE 03/22/2023



IT IS A VIOLATION OF LAW FOR ANY PERSON, UNLESS THEY ARE ACTING UNDER THE DIRECTION OF A LICENSED PROFESSIONAL ENGINEER, ARCHITECT, LANDSCAPE ARCHITECT OR LAND SURVEYOR TO ALTER AN ITEM IN ANY WAY. IF AN ITEM BEARING THE STAMP OF A LICENSED PROFESSIONAL IS ALTERED, THE ALTERING ENGINEER, ARCHITECT, LANDSCAPE ARCHITECT OR LAND SURVEYOR SHALL STAMP THE DOCUMENT AND INCLUDE THE NOTATION "ALTERED BY" FOLLOWED BY THEIR SIGNATURE, THE DATE OF SUCH ALTERATION, AND A SPECIFIC DESCRIPTION OF THE ALTERATION.

0	03/22/2023	ISSUED FOR CONSTRUCTION SUBMISSION	JTM	JPR	
No.	DATE	SUBMITTAL / REVISION DESCRIPTION	DB	APP	







File: V:\PROJECTS\ANY\6\066076.000\09\_Design\Drawings\01\_Sheets\Design Package 1C\066076\_01C - G-003 Package Specific Notes.DWG Saved: 3/16/2023 3:15:38 PM Plotted: 3/17/2023 8:29:00 AM Current User: Bouillon, Hugo LastSavedBy: 7895

CANADIAN PACIFIC RAILWAY (CPR) NOTES:

- 1. THE DESIGN WITHIN THE RAILROAD RIGHT OF WAY INCORPORATES ASPECTS OF THE FOLLOWING STANDARDS:
  - 1.a. CANADIAN PACIFIC RAILWAY – UTILITY SPECIFICATIONS AND APPLICATION PROCESS (US) – [HTTPS://WWW.CPR.CA/EN/CHOOSE-RAIL-SITE/DOCUMENTS/CP-UTILITY-SPECS-AND-APPLICATION-PROCESS.PDF](https://www.cpr.ca/en/choose-rail-site/documents/cp-utility-specs-and-application-process.pdf)
  - 1.b. AMERICAN RAILWAY ENGINEERING AND MAINTENANCE ASSOCIATION (AREMA) MANUAL FOR RAILWAY ENGINEERING.
  - 1.c. BNSF/UP GUIDELINES FOR TEMPORARY SHORING.
- 2. SEE ADJACENT CANADIAN PACIFIC RAILWAY (CPR) GENERAL CONSTRUCTION NOTES.

GENERAL HORIZONTAL DIRECTIONAL DRILLING NOTES:

- 1. UNLESS NOTED OTHERWISE ON C-300 SERIES HDD PLAN AND PROFILES, EACH HDD CONSISTS OF A PAIR OF (2) HVDC ELECTRICAL TRANSMISSION CABLES HOUSED IN INDIVIDUAL 10” DIAMETER CASINGS/CONDUITS, HDPE DR9, AND A THIRD 2” DIAMETER CASING/CONDUIT, HDPE DR9, WILL BE BUNDLED IN PULLBACK WITH ONE OF THE 10” CASINGS/CONDUITS FOR A TELECOMMUNICATION LINE.
- 2. THERMAL RESISTIVITY (TR) HORIZONTAL SPACING TO BE MAINTAINED IN PLAN BETWEEN CONDUIT 1 AND CONDUIT 2 IS CALLED OUT AS “TRDS” APPENDED TO A DIMENSION IN BETWEEN CONDUITS IN PLAN VIEWS, WHERE TRDS IS THE THERMAL RESISTIVITY DESIGN SPACING. TRDS IS DERIVED FROM AN ASSIGNED RHO (GREEK CHARACTER  $\rho$  FOR TR) AND ON DESIGN DEPTH FOR THE PAIR OF CONDUITS IN SHOWN PROFILE. RHO AND TRDS ARE DETERMINED BY ELECTRICAL ENGINEERING ON THE BEHALF OF THE OWNERS.
- 3. THE HDD CONTRACTOR SHALL HOLD THE TRDS IN THEIR OPERATIONS WITHIN THE HORIZONTAL TOLERANCES SPECIFIED IN SECTION 330507.13. IN CONSTRUCTION, THE SPACING SHALL BE CONTROLLED, OBSERVED, AND MAINTAINED SUCH THAT THE AS-BUILT SPACING SHALL NEVER BE LESS THAN TRDS MINUS 10 FEET, ABSOLUTE MINIMUM.
- 4. HDD SUBCONTRACTOR SHALL COORDINATE WITH OVERHEAD ELECTRIC OWNER/OPERATOR(S) TO HAVE TEMPORARY PROTECTIVE SLEEVES INSTALLED ON OVERHEAD POWER LINES IN THE VICINITY OF WORKZONES.
- 5. STANDARD PENETRATION TEST, SPT, N-VALUES SHOWN ON THE C-300 SERIES DRAWINGS ARE NOT CORRECTED FOR THE SAMPLER SIZE OR HAMMER ENERGY. REFERENCE BORING LOGS AND GEOTECHNICAL REPORTS FOR DETAILED INFORMATION.
- 6. WHEN CONDUCTOR CASINGS OR CONDUITS ARE USED TO MANAGE INADVERTENT RETURNS, THE CONDUCTOR SHALL BE REMOVED IMMEDIATELY AFTER THE PULL BACK OF THE MAIN CONDUIT OR CONDUIT BUNDLE. A WRITTEN PLAN MUST BE SUBMITTED SEEKING ENGINEERING APPROVAL OF THE MATERIAL USED TO REPLACE THE RESIDUAL DRILLING FLUID WHEN FILLING THE ANNULAR SPACE BETWEEN THE CONDUIT OR CONDUIT BUNDLE AND THE NATIVE SOILS LEFT AFTER CONDUCTOR CASING EXTRACTION.
- 7. FOR WORKZONES THAT ARE ADJACENT TO OR IN CLOSE PROXIMITY TO OVERHEAD ELECTRIC WHERE EQUIPMENT MUST BE MANEUVERED, THE HDD SUBCONTRACTOR SHALL COORDINATE WITH ELECTRIC OWNER/OPERATOR TO ENSURE THAT ALL OSHA MANDATED CLEARANCES ARE OBSERVED AND MAINTAINED WITH THE INSTALLATION OF HIGH VISIBILITY RUBBER SLEEVES FOR VISUAL INDICATION PURPOSES. ADDITIONAL SPOTTERS SHOULD BE CONSIDERED.
- 8. WHEN AN HDD WORK ZONE OR WORK AREA CROSSES, OVERLAPS, OR IMPACTS DESIGNATED WETLANDS, RESTORATION OF THOSE WETLANDS SHALL BE INITIATED UPON COMPLETION OF WORK USING ACCEPTED ENVIRONMENTAL BEST MANAGEMENT PRACTICES (BMP). WORK ZONES ARE CONSIDERED AN EXTENSION OF ACCESS ROADS. TIMBER MATTING, AS SHOWN AND NOTED ON WETLAND CROSSING DETAILS, SHEET C-611, OPTION “A” AND/OR OPTION “B” ADAPTED TO THE SITE-SPECIFIC NEEDS AND ADJACENT ACCESS ROADS, SHOULD BE USED.
- 9. ABANDON UTILITY POLES THAT ARE ENCOUNTERED WITHIN THE RAILROAD ROW AND BOUNDARY BY THE HDD SUBCONTRACTOR WITHIN WORK ZONES, IMMEDIATELY ADJACENT TO A WORK ZONE, OR THAT OTHERWISE OBSTRUCT PREPARATION OF, OR USE OF, A WORK ZONE AND OR FABRICATION OF THE PULLBACK STRING OF HDPE CONDUIT(S) SHALL BE REMOVED AND DISPOSED OF BY OTHERS.

CANADIAN PACIFIC RAILWAY (CPR) – GENERAL CONSTRUCTION NOTES

CONSTRUCTION REQUIREMENTS

1. LOCATES & UTILITIES

- a. THE CONTRACTOR IS REQUIRED TO OBTAIN AND MAINTAIN LOCATES FOR THE ENTIRE WORKING AREA PRIOR TO COMMENCING ANY EXCAVATION OR SUBSURFACE WORK.
- b. FIBRE OPTIC LOCATES MUST BE REQUESTED THROUGH THE CP OPERATIONS DESK AT 1-800-387-1833. FIBRE OPTICS ARE LOCATED PARALLEL TO THE ROW THROUGHOUT MOST OF THE RAILWAYS NETWORK.
- c. FIBRE OPTIC CABLES MUST BE PROTECTED, AND PHYSICALLY EXPOSED WHERE DIRECTED BY THE FIBRE OPTIC OWNERS REPRESENTATIVE.
- d. RAILWAY SIGNAL LOCATES MUST ALSO BE OBTAINED THROUGH THE CP OPERATIONS DESK.
- e. ALL OTHER UTILITY LOCATES MUST BE OBTAINED THROUGH THE UTILITIES DIRECTLY, OR THROUGH A ONE-CALL SERVICE AS APPROPRIATE.
- f. THE CONTRACTOR SHALL BE SOLELY RESPONSIBLE FOR PROPERLY LOCATING, PROTECTING AND RESTORING ANY UTILITIES WITHIN RAILWAY PROPERTY.

2. SETBACKS

- a. REQUIRED CONSTRUCTION CLEARANCES SHALL BE MAINTAINED AT ALL TIMES THROUGHOUT THE WORK.
- b. NO PERMANENT FACILITIES SHALL BE CONSTRUCTED WITHIN 25’ OF ANY MAIN TRACK CENTERLINE.
- c. NO TEMPORARY FACILITIES SHALL BE CONSTRUCTED WITHIN 13’ OF ANY MAIN TRACK CENTRELINE, AND THEN ONLY WITH EXPRESSED WRITTEN AUTHORIZATION BY CP.
- d. WHERE II) OR III) ABOVE HAVE THE POTENTIAL TO IMPACT WAYSIDE SIGNAL OR CROSSING SIGHTLINES, THE DISTANCES MUST BE INCREASED TO COMPLY WITH SIGHTLINE REQUIREMENTS.

3. CROSSING TRACKS

- a. PERSONNEL MAY ONLY CROSS TRACKS ON FOOT WHEN AUTHORIZED BY THE FLAGMAN UNLESS USING A DESIGNATED PUBLIC CROSSING. CROSS THE TRACKS AT A 90 DEGREE ANGLE, AND NEVER STEP ON THE RAIL.
- b. THE OPERATION OF ANY MACHINERY, VEHICLE OR EQUIPMENT ON OR ACROSS TRACKS AT A LOCATION OTHER THAN A DESIGNATED CROSSING IS PROHIBITED.
- c. TEMPORARY CROSSINGS SHALL ONLY BE INSTALLED WHERE AUTHORIZED BY CP, AND SHALL COMPLY WITH ALL APPLICABLE CROSSING SAFETY REGULATIONS.
- d. TEMPORARY CROSSINGS WILL BE INSTALLED AND REMOVED BY CP FORCES, AND SHALL NOT BE CONSTRUCTED OR USED UNLESS A SIGNED AGREEMENT IS IN EFFECT.
- e. TEMPORARY CROSSINGS MUST BE SECURED BY A LOCKED GATE ON BOTH SIDES OF THE TRACK AT ALL TIMES THAT THE FLAGMAN IS NOT PRESENT.
- f. WHEN CROSSING TRACKS AT A CROSSING, CONTACT WITH THE RAIL BY MACHINERY TRACKS OR OTHER METAL COMPONENTS IS STRICTLY PROHIBITED. BLASTING MATS OR OTHER MEANS MUST BE INSTALLED TO PREVENT MECHANICAL CONTACT BETWEEN METAL SURFACES AND THE RAILS.
- g. CROSSINGS MUST BE KEPT CLEAR OF MATERIAL, MUD OR DEBRIS. THE CROSSING MUST BE INSPECTED AND CLEANED AS REQUIRED, WITH PARTICULAR ATTENTION TO THE FLANGEWAYS, PRIOR TO THE PASSAGE OF EACH TRAIN.
- h. THE CONTRACTOR MUST ENSURE THAT BOTH RAILS OF THE SAME TRACK ARE NEVER CONNECTED WITH ANY METAL CONDUCTOR (SUCH AS BARE WIRE, STEEL TAPE MEASURES, EQUIPMENT, ETC).

4. HOUSEKEEPING

- a. THE PROJECT SITE MUST BE KEPT CLEAN AND TIDY. DEBRIS MUST BE PROMPTLY REMOVED.
- b. STORAGE OF MATERIALS ON RAILWAY PROPERTY IS PROHIBITED.
- c. POSITIVE DRAINAGE AWAY FROM THE TRACKS MUST BE MAINTAINED AT ALL TIMES.
- d. ALL SCAFFOLDING, FALSEWORK, FORMWORK, PROTECTIVE COVERINGS ETC. MUST BE SECURED AGAINST MOVEMENT DURING THE PASSAGE OF TRAINS AT TRACK SPEED.
- e. OPEN EXCAVATIONS MUST BE PROTECTED BY SIGNAGE AND FENCING. CONSIDERATION MUST BE GIVEN TO THE SAFETY OF TRAIN CREWS WHO MAY BE REQUIRED TO WALK THROUGH THE WORK SITE AT NIGHT.
- f. WHEREVER PRACTICAL, OPEN EXCAVATIONS SHALL BE FULLY COVERED AND SECURED IN LIEU OF FENCING.
- g. STORAGE OF EQUIPMENT AND MACHINERY ON RAILWAY PROPERTY IS PROHIBITED.
- h. TRACKS MUST BE PROTECTED FROM DEBRIS DURING WORK OPERATIONS. PLYWOOD, FILTERCLOTH OR OTHER MEASURES SHALL BE INSTALLED AT THE DIRECTION OF THE RAILWAY TO PREVENT CONTAMINATION OF THE TRACK BALLAST.
- i. THE CONTRACTOR SHALL BE LIABLE FOR ANY COST INCURRED BY THE RAILWAY TO RESTORE FOULED TRACK BALLAST.

5. WEATHER RESTRICTIONS

- a. THE RAILWAY RESERVES THE RIGHT TO SUSPEND ANY CONSTRUCTION ACTIVITY WHICH MAY AFFECT THE STABILITY OF THE ROADBED, BALLAST OR TRACK STRUCTURE AS A RESULT OF HOT WEATHER OR EXCESSIVE PRECIPITATION.
- b. WHEN THE AMBIENT AIR TEMPERATURE IS EQUAL TO OR GREATER THAN 25°C (77°F), THE RAILWAY MAY IMPOSE EXCAVATION RESTRICTIONS.
- c. WHEN THE AMBIENT AIR TEMPERATURE IS EXPECTED TO EXCEED 30°C (86°F), EXCAVATION OF THE ZONE OF POTENTIAL TRACK LOADING (ZPTL) OR BALLAST SHOULDERS IS PROHIBITED.
- d. BACKFILLED EXCAVATIONS MUST BE PROTECTED FROM EROSION UNTIL NATURAL VEGETATION PROPERLY GERMINATES. THIS MAY INCLUDE TARPING SLOPES WHEN SIGNIFICANT PRECIPITATION IS EXPECTED.



**Kiewit**

**CHA**  
III Winners Circle, PO Box 5269  
Albany, NY 12205-0269  
518.453.4500 • [www.chacompanies.com](http://www.chacompanies.com)



IT IS A VIOLATION OF LAW FOR ANY PERSON, UNLESS THEY ARE ACTING UNDER THE DIRECTION OF A LICENSED PROFESSIONAL ENGINEER, ARCHITECT, LANDSCAPE ARCHITECT OR LAND SURVEYOR TO ALTER AN ITEM IN ANY WAY. IF AN ITEM BEARING THE STAMP OF A LICENSED PROFESSIONAL IS ALTERED, THE ALTERING ENGINEER, ARCHITECT, LANDSCAPE ARCHITECT OR LAND SURVEYOR SHALL STAMP THE DOCUMENT AND INCLUDE THE NOTATION "ALTERED BY" FOLLOWED BY THEIR SIGNATURE, THE DATE OF SUCH ALTERATION, AND A SPECIFIC DESCRIPTION OF THE ALTERATION.

0	03/22/2023	ISSUED FOR CONSTRUCTION SUBMISSION	JTM	JPR	
No.	DATE	SUBMITTAL / REVISION DESCRIPTION	DB	APP	

CHAMPLAIN HUDSON POWER EXPRESS SEGMENT 3 ( PACKAGE 1C ) WHITEHALL TO FORT ANN PACKAGE SPECIFIC NOTES				
DRAWN BY:	JJE	DESIGNED BY:	JTM	APPROVED BY:
				JPR
SCALE		AS NOTED		
REV. NO.				X

KIEWIT PROJECT NO.	21162
CHA PROJECT NO.	066076
DRAWING NO.	G-003
DATE	03/22/2023

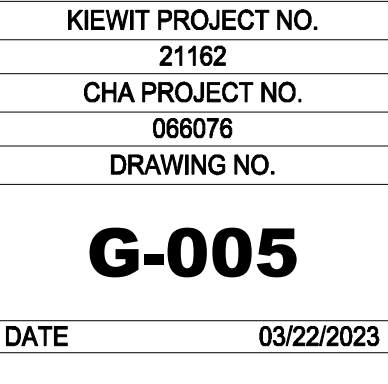






# PLAN AND PROFILE KEY MAP

SCALE: 1" = 2000'









File: V:\PROJECTS\ANY\606076.000\09\_DESIGN\DRAWINGS\01\_SHEETS\DESIGN PACKAGE 10\06076\_F1C - G-011.DWG Saved: 3/17/2023 9:58:34 AM Plotted: 3/17/2023 9:59:35 AM Current User: Bouillon, Hugo LastSavedBy: 7895

Table 9.2 – Summary of Wetland Impacts						
Wetland ID	Jurisdiction	Drawing Sheet Number and Approximate Station	Wetland Community Type(s)	Permanent ROW Impacts (square feet)	Temporary Construction Impacts (square feet)	State Wetland Buffer Temporary Construction Impacts (square feet)
CP Rail – Package 1C						
Wetland PIC-B2	USACE	15068+50 to 15070+75 (C-105, C-211, C-403)	PSS	0	4,196	0
Wetland G-R-X-1	USACE	15095+75 to 15097+75 (C-113 to C-112, C-406)	PSS	2200	4,174	0
		15144+25 to 15146+25	PEM	3404	23641	0
		15156+00 to 15166+75 (C-107, C-110, C-112, C-404 to C-406)	PFF	1944	3681	0
			PFO	9198	31019	0
Wetland G-R-U	USACE	15164+25 to 15171+50 (C-111 to C-112, C-406)	PEM	0	0	0
			PFO	2,359	34,822	0
		15165+00 (C-406)	PEM	0	3,377	0
Wetland PIC-A2	USACE	112+113, C-212, C-406	PEM	0	3,377	0
Wetland G-R-V	USACE	15186+50 to 15188+25 (C-113, C-407)	PFO	1179	2,621	0
Wetland G-R-X-1C-C	USACE	15196+00 to 15197+50 (C-114, C-213, C-407)	PSS	0	7,218	0
			PEM	0	1,225	0
Wetland 1C-B	USACE	15192+00 (C-114, C-213, C-407)	PEM	0	0	0
Wetland G-R-W	USACE	15198+25 to 15200+00 (C-407, C-408, C-409 to C-408)	PSS	2,231	1,274	0
			PFO	629	4,060	0
		15256+50, 15268+75 to 15280+25 (C-116 to C-119, C-408 to C-410)	PEM	5,685	57,309	0
Wetland G-R-X-1C-A	USACE	15241+00 (C-117, C-214, C-408 to C-409)	PSS	0	10,623	0
			PEM	0	15,366	0
Wetland PIC-B	USACE	15241+00 (C-11X+11X, C-214, C-409)	PEM	0	708	0
Wetland PIC-D	USACE	15241+00 (C-11X+11X, C-214, C-409)	PEM	0	118	0
Wetland PIC-E	USACE	15241+00 (C-11X+11X, C-214, C-409)	PEM	0	118	0
Wetland G-R-Y (P2-YA)	USACE	15281+25 to 15297+50 (C-119 to C-121, C-409 to C-411)	PEM	16,435	18,601	0
Wetland C11J	USACE	15304+00 (C-411)	PEM	0	0	0
Wetland C11J	USACE	15306+00 (C-411)	PEM	0	0	0
Total by Wetland Community Type				PEM	25,524 sF 0.59 ac	120,463 sF 2.77 ac
				PSS	26,475 sF 0.61 ac	47,806 sF 1.1 ac
				PFO	32,657 sF 0.75 ac	106,869 sF 2.41 ac
Total					84,656 sF 1.95 ac	399,228 sF 6.18 ac

Note: (1) PEM – Palustrine emergent, PSS – Palustrine scrub-shrub, PFO – Palustrine forested. Table 9.2 describes the location and impact for each wetland within this Package. All construction related activity will follow the procedures described in Section 9.1.

### SEGMENT 3 – SUMMARY OF WETLAND IMPACTS

Table 4.1 - HDD Locations					
Segment/Package	HDD Designation	HDD Length (feet)	Reason for HDD	Sheet Number	Location (Approximate-see Drawings for Details)
3/I/C	HDD-3	1868, 1869	Wetlands	C-105 to C-107	15074+50 to 15093+20
3/I/C	HDD-4	628, 650	Culvert	C-110	15138+60 to 15144+75
3/I/C	HDD-4A	735, 760	Railroad Tracks	C-111 to C-112	15163+05 to 15170+50
3/I/C	HDD-5	712, 723	Culvert & Wetlands	C-112 to C-113	15175+15 to 15182+40
3/I/C	HDD-6	1339,	Railroad Tracks & Culvert	C-115 to C-116	15218+15 to 15231+50
3/I/C	HDD-7	1305	Wetlands	C-118	15256+05 to 15269+00
3/I/C	HDD-8	655, 838	Railroad Tracks & Culvert	C-120 to C-121	15296+20 to 15304+95

Note: Table 4.1 describes the locations of HDD activity within this Package. HDD will be performed in accordance with the Horizontal Direction Drilling Site Investigation and Planning Report and Inadvertent Release and Contingency Plan in Appendix J, the specifications described in Section 4.3.1, and the BMP document.

### SEGMENT 3 – HDD LOCATIONS

Table 4.4B – Facility ROW Ownership and Easements

Segment/Package	Parcel ID	Description	Location (Approximate – See Drawings for Details)	Comments
S3/P1C	51.17-3-3	Temporary Easement	15000+09 to 15000+48 (C-101)	Private easement, Lower Bellamy St. - Private Landowner -
S3/P1C	51.17-3-4	Temporary Easement	15000+48 to 15001+08 (C-101)	Private easement, Lower Bellamy St. - Private Landowner - Transition from Lower Bellamy St. to CP Rail
S3/P1C	State Route 22	Temporary Easement	15002+66 to 15016+31 (C-101 to C-102)	Public easement; Along SR22 @ Retaining Wall to meet CC140 requirements
S3/P1C	60.05-4-18	Permanent Easement	15032+20 to 15032+83 (C-103)	Private; Northwest of Poultney Street
S3/P1C	60.09-2-8.6	Permanent Easement	15034+55 to 15040+61 (C-103)	Private; Southwest of Poultney Street
S3/P1C	60.09-2-8.6	Temporary Easement	15034+55 to 15041+41 (C-103)	Private; Southwest of Poultney Street
S3/P1C	60.09-2-8.6	Temporary Easement (Access Road)	15036+00 to 15037+00 (C-103)	Private; Southwest of Poultney Street
S3/P1C	60.09-2-8.6	Temporary Easement (Access Road)	15037+00 to 15037+00 (C-103)	Private; Southwest of Poultney Street
S3/P1C	60.09-2-8.6	Permanent Easement	15045+14 to 15054+62 (C-104)	Private; West of RR ROW
S3/P1C	60.09-2-8.6	Temporary Easement	15045+54 to 15056+84 (C-104)	Private; West of RR ROW
S3/P1C	60-2-4.2	Temporary Easement (Access Road)	15069+72 to 15071+96 (C-105)	Private; West of RR ROW
S3/P1C	60-2-3	Temporary Easement (Access Road)	15071+41 to 15072+05 (C-105)	Private; West of RR ROW
S3/P1C	60-2-4.1	Temporary Easement (Access Road)	15071+52 to 15071+86 (C-105)	Private; West of RR ROW
S3/P1C	60.2-2-4.3	Temporary Easement (Access Road)	15071+86 to 15071+96 (C-105)	Private; West of RR ROW
S3/P1C	69-1-1	Temporary Easement	15162+47 to 15175+70 (C-111 to C-112)	Private; East of RR ROW
S3/P1C	68-1-16.1	Temporary Easement (Access Road)	15164+61 to 15165+11 (C-111 to C-112)	Private
S3/P1C	69-1-1	Permanent Easement	15169+48 to 15179+84 (C-112)	Private; East of RR ROW
S3/P1C	69-1-1	Permanent Easement	15179+89 to 15188+98 (C-112 tp 113)	Public; East of RR ROW
S3/P1C	69-1-1	Temporary Easement	15181+98 to 15182+92 (C-113)	Public; East of RR ROW
S3/P1C	77-1-9.1	Temporary Easement (Access Road)	15187+68 to 15188+44 (C-113)	Private; East of RR ROW
S3/P1C	69-1-1	Temporary Easement	15194+99 to 15218+48 (C-114 to C-115)	Public; East of RR ROW
S3/P1C	69-1-1	Permanent Easement	15196+49 to 15220+12 (C-114 to 115)	Public; East of RR ROW
S3/P1C	77-1-4.1	Permanent Easement	15222+65 to 15257+88 (C-115 to C-118)	Private; Northwest of RR ROW
S3/P1C	77-1-4.1	Temporary Easement	15231+18 to 15256+48 (C-116 to C-118)	Private; Northwest of RR ROW
S3/P1C	77-1-4.1	Temporary Easement (Access Road)	15240+50 to 15241+47 (C-117)	Private; Northwest of RR ROW
S3/P1C	86-1-5	Permanent Easement	15257+88 to 15263+84 (C-118)	Private; Northwest of RR ROW
S3/P1C	86-1-2.1	Permanent Easement	15263+84 to 15273+56 (C-118 to C-119)	Private; Northwest of RR ROW
S3/P1C	86-1-2.1	Temporary Easement	15268+70 to 15273+56 (C-118 to C-119)	Private; Northwest of RR ROW
S3/P1C	86-1-6	Temporary Easement	15273+56 to 15281+05 (C-119)	Private; Northwest of RR ROW
S3/P1C	Ryder Road	Temporary Easement & Permanent Easement	15281+05 to 15281+33 (C-119)	Public; Southwest of Ryder Road
S3/P1C	86-1-18.1	Temporary Easement	15281+33 to 15283+04 (C-119)	Private easement; – running adjacent to West side of CP Rail, outside deviation zone
S3/P1C	86-1-18.1	Temporary Easement (Laydown Yard)	15281+33 to 15285+10 (C-119)	Private; Southwest of Ryder Road
S3/P1C	86-1-7	Temporary Easement (Access Road)	15296+88 to 15297+30 (C-120)	Private; West of RR ROW
S3/P1C	69-1-1	Permanent Easement	15302+91 to 15304+55 (C-121)	Public; East of RR ROW
S3/P1C	69-1-1	Permanent Easement	15302+91 to 15304+50 (C-121)	Public; East of RR ROW

Note: Table 4.4B summarizes parcels upon which the alignment and Construction Zone will be located.

### SEGMENT 3 – FACILITY ROW OWNERSHIP AND EASEMENTS

Table 9.4 – Summary of Federal and State-Listed Species				
Status	ESA Type	Location	Best Management Practices	Impacts
Federal/State Endangered	ESA 4	Assumed to be roosting habitat located throughout the Project Corridor (PIC: 15000+00 to 15306+61)	a) Conduct tree clearing and tree trimming activities between October 31 and March 31. Tree clearing and tree trimming activities are not allowed between April 1 and October 30. <sup>6</sup> b) During the preconstruction survey, the contractors would identify large live or dead trees with peeling bark, including large specimens of shagbark hickory (Carya ovata), with the potential to serve as maternity or roost trees and these would be marked. Potential roost trees identified within the construction limits would be avoided where possible during construction activities.	None
Federal/State Threatened	ESA 9	Assumed to be roosting habitat located throughout the Project Corridor (PIC: 15000+00 to 15306+61)	a) Conduct tree clearing and tree trimming activities between October 31 and March 31. Tree clearing and tree trimming activities are not allowed between April 1 and October 30. <sup>6</sup> b) During the preconstruction survey, the contractors would identify large live or dead trees with peeling bark, including large specimens of shagbark hickory (Carya ovata), with the potential to serve as maternity or roost trees and these would be marked. Potential roost trees identified within the construction limits would be avoided where possible during construction activities.	None
Federal Candidate	ESC – Candidate Insect	Assumed to be habitat in various open areas located throughout the Project Corridor (PIC: 15000+00 to 15306+61)	a) None proposed due to current status as a candidate species and no critical habitat identified by USFWS. Additionally, not listed as a State protected species.	None
State-Endangered	ESA 12	N/A	a) No suitable habitat within the project corridor. b) No Impacts Anticipated. c) NHP documented wintering at the Fort Edward Grasslands, NHP mapped area extends to within 1/3 mile of the project alignment northeast of Dunham Basin in the Town of Kingsbury.	None
Unlisted/Conservation Concern Rare	N/A- Insect	NA	a) NHP documented in Champlain Canal @ Lock 11. b) 100% avoidance of aquatic larval stage.	None

Note: Table 9.4 identifies the federal and state listed species that may be encountered on or in the vicinity of this Package. Section 9.3 and Appendix T describe the habitat for these species and the procedures that will be followed to minimize the impact on these species. (6) In the event of an unanticipated emergency that requires tree clearing or tree trimming during April 1 to October 30, the procedures describe in Section 8.2 will be followed.

### SEGMENT 3 – FEDERALLY LISTED AND STATE LISTED SPECIES

Table 4.2 - Structures within 100 Feet of HDD or Trenching Operations

HDD# / Trench	Structure	Parcel	Sheet Number	Location (Approximate – see Drawings for Details)	Notes
Trench	Private Residence	51.13-4-2	C-101	15000-00	North Side of Lower Bellamy Street
Trench	Private Residence	51.13-4-3	C-101	15000-00	North Side of Lower Bellamy Street
Trench	Private Residence	51.17-3-2	C-101	15000-00	South Side of Lower Bellamy Street
Trench	Private Residence	51.17-3-3	C-101	15000-50	South Side of Lower Bellamy Street
Trench	Private Residence	51.17-3-4	C-101	15000-75	South Side of Lower Bellamy Street
Trench	Private Residence	51.13-5-9	C-101	15001-00	East of Lower Bellamy Street - East side of CP Rail
Trench	Private Residence	51.17-4-11	C-101	15006-75	North of Division Street - East side of CP Rail
Trench	Commercial Business – New Woman II	51.17-4-40	C-101	15007-50	East of Broadway Street/Rte. 22 - East side of CP Rail
Trench	Commercial Warehouse/Storage	51.17-4-30	C-101	15008-25	East of Broadway Street/Rte. 22 Saunders St. - East side of CP Rail
Trench	Commercial Building – 1st Presbyterian Church - Whitehall	51.17-2-21	C-101	15008-00	West of Broadway Street/Rte. 22 - West side of CP Rail
Trench	Commercial Building – Long's Boat Service	51.17-6-3	C-101	15010-00	West of Broadway Street/Rte. 22 - West side of CP Rail
Trench	Commercial Warehouse/Storage	51.17-4-30	C-101	15009-50	East of Broadway Street/Rte. 22 - East side of CP Rail
Trench	Commercial Building	51.17-4-25	C-101	15010-50	East of Broadway Street/Rte. 22 - East side of CP Rail
Trench	Private Residence	51.17-6-4	C-101	15010-50	West of Broadway Street/Rte. 22 - West side of CP Rail
Trench	Commercial Building	51.17-4-24	C-101	15011-00	East of Broadway Street/Rte. 22 - East side of CP Rail
Trench	Private Residence	51.17-6-5	C-101	15011-00	West of Broadway Street/Rte. 22 - West side of CP Rail
Trench	Commercial Building	51.17-4-23 and 51.17-4-22	C-101	15011-50	East of Broadway Street/Rte. 22 - East side of CP Rail
Trench	Private Residence	51.17-6-7	C-101	15011-50	West of Broadway Street/Rte. 22 - West side of CP Rail
Trench	Commercial Building	51.17-4-21	C-101	15012-00	East of Broadway Street/Rte. 22 - East side of CP Rail
Trench	Private Residence	51.17-6-8	C-101	15012-00	West of Broadway Street/Rte. 22 - West side of CP Rail
Trench	Private Residence	51.17-6-8	C-101	15012-50	West of Broadway Street/Rte. 22 - West side of CP Rail
Trench	Private Residence	51.17-6-12	C-101	15013-00	West of Broadway Street/Rte. 22 - West side of CP Rail
Trench	Private Residence	51.17-6-12.1	C-101	15014-00	West of Broadway Street/Rte. 22 - West side of CP Rail
Trench	Wholesale Fire Department	51.17-4-20	C-101	15014-00	East of Broadway Street/Rte. 22 - East side of CP Rail
Trench	Commercial Building – Vacant	51.17-6-14.1	C-101	15015-00	West of Broadway Street/Rte. 22 – North of Chapin Alley - West side of CP Rail
Trench	Commercial Building – Carol's Collectibles	51.17-6-15	C-101	15015-00	West of Broadway Street/Rte. 22 – North of Chapin Alley - West side of CP Rail
Trench	Commercial Building – US Post Office	51.17-6-16	C-102	15016-25	West of Broadway Street/Rte. 22 – South of Chapin Alley - West side of CP Rail
Trench	Commercial Building – Police Station	60-5-5-1	C-102	15017-00	East of Broadway Street/Rte. 22 - East side of CP Rail
Trench	Private Residence / Commercial Bldg.	51.17-6-17	C-102	15017-25	West of Broadway Street/Rte. 22 - West side of CP Rail
Trench	Private Residence	60-5-4-1	C-102	15018-50	East of Broadway Street/Rte. 22 - West side of CP Rail
Trench	Private Residence	60-5-4-2	C-102	15019-50	East of Broadway Street/Rte. 22 - Opposite School St. - West side of CP Rail
Trench	Private Residence	60-5-4-3	C-102	15020-00	East of Broadway Street/Rte. 22 - Opposite School St. - West side of CP Rail
Trench	Private Residence	60-5-4-4	C-102	15020-50	East of Broadway Street/Rte. 22 - West side of CP Rail
Trench	Private Residence	60-5-4-5	C-102	15021-00	East of Broadway Street/Rte. 22 - West side of CP Rail
Trench	Private Residence	60-5-4-7	C-102	15021-50	East of Broadway Street/Rte. 22 - West side of CP Rail
Trench	Private Residence	60-5-4-8	C-102	15021-75	West of Skeneborough Drive - East side of CP Rail
Trench	Private Residence	60-5-4-9	C-102	15022-75	East of Broadway Street/Rte. 22 - West side of CP Rail
Trench	Private Residence	60-5-4-10.1	C-102	15023-25	East of Broadway Street/Rte. 22 - West side of CP Rail

Table 9.5 – Aquatic Invasive Species	
Species Name (Scientific Name)	Location Wetland ID & Wetland Flag IDs (if applicable)
purple loosestrife ( <i>Lythrum salicaria</i> )	Wetland G-R-X (1PPP- 1111); 15111+50 to 15115+00
	Wetland G-R-U (113 – 29); 15142+00 -15172+00
	Wetland G-R-X (5 – 30); 15227+00 –15280+75
common reed ( <i>Phragmites australis</i> )	Wetland G-R-Y (1 – 11); 15282+00 -15297+00
	Wetland G-R-S (3-13); 15084+00 to 15093+00
	Wetland G-R-X (1PPP- 1111); 15111+50 to 15115+00
	Wetland C11J (5 - 9); 15305+50 – Const. Entrance

Note: Table 9.4 identifies the locations of invasive aquatic plants that were identified within this Package. Section 9.3 describes the procedures to be followed to reduce the spread of invasive species.

### SEGMENT 3 – AQUATIC INVASIVE SPECIES/LOCATION

Table 4.4A – CC 140 Waivers Requested for Segment 3				
Segment/Package	Parcel ID	Description	Location (Approximate – See Drawings for Details)	Comments
S3/P1C	51.17-3-3	Permanent Easement	15000+09 to 15000+48 (C-101)	Private easement; Lower Bellamy St. - Private Landowner -
S3/P1C	51.17-3-4	Permanent Easement	15000+48 to 15001+08 (C-101)	Private easement; Lower Bellamy St. - Private Landowner - Transition from Lower Bellamy St. to CP Rail
S3/P1C	State Route 22	Permanent Easement	15002+66 to 15016+31 (C-101 to C-102)	Public easement; Along SR22 @ Retaining Wall to meet CC140 requirements
S3/P1C	86-1-6	Permanent Easement	15273+56 to 15281+05 (C-119)	Private easement; – running adjacent to West side of CP Rail, outside deviation zone
S3/P1C	86-1-18.1	Permanent Easement	15281+33 to 15283+04 (C-119)	Private easement; – running adjacent to West side of CP Rail, outside deviation zone

Note: Table 4.4A summarizes the easements that are in place along Segment 3 – Package 1C that CHPE is seeking waivers per CC 140. Section 4.7 summarizes the procedures that will be followed in regards to land access and acquisition.

### SEGMENT 3 –WAIVERS REQUESTED FOR SEGMENT 3

Trench	Private Residence	60-5-4-10.1	C-102	15023-75	East of Broadway Street/Rte. 22 - West side of CP Rail
Trench	Commercial Building – Skeneborough Emergency Facility	60-5-5-5	C-102	15023+50	West of Skeneborough Drive - East side of CP Rail
Trench	Private Residence	60- 5-5-10.4	C-102	15024+50	East of Broadway Street/Rte. 22 - West side of CP Rail
Trench	Commercial Building – Retro Hoarders Gaming Store	60-5-4-10.2	C-102	15025+50	East of Broadway Street/Rte. 22 - Opposite Gilmore St. - West side of CP Rail
Trench	Private Residence	60-5-4-10.3	C-102	15026+25	East of Broadway Street/Rte. 22 - West side of CP Rail
Trench	Multi-family Private Residence	60-0-4-11	C-102	15027+50	East of Broadway Street/Rte. 22 - West side of CP Rail
Trench	Commercial Building – Putot's Repair Shop	60-5-4-12	C-102	15028+50	East of Broadway Street/Rte. 22 - West side of CP Rail
Trench	Commercial Building – Putot's Broadway Market	60-5-4-13	C-102	15029+25	East of Broadway Street/Rte. 22 - Opposite Queen St. - West side of CP Rail
Trench	Private Residence	60-5-4-15.1	C-102 & 103	15030+25	East of Broadway Street/Rte. 22 - West side of CP Rail
Trench	Private Residence/Garage	60-5-4-17	C-103	15031+50	East of Broadway Street/Rte. 22 - F. Boardman St. - West side of CP Rail
Trench	Commercial Building - Power Station	60-9-8-6	C-103	15035+50	West of Riverside Drive - F. Boardman St. East side of CP Rail
Trench	Commercial Building - Power Station	60-9-8-6	C-103	15036+00	West of Riverside Drive - F. Boardman St. East side of CP Rail
HDD +3-Trench	Railroad Building	68-1-10	C-107	15094+00	HDD +3 - Between main railroad tracks and spur (west side)
Trench	Railroad Building	68-1-10	C-107	15095+00	HDD +3 - Between main railroad tracks and spur (west side)
Trench	Private Residence	51-13-4-2	C-101	15000+00	North Side of Lower Bellamy Street
Trench	Railroad Building	68-1-10	C-107	15095+00	HDD +3 - Between main railroad tracks and spur (west side)
Trench	Private Residence	51-13-4-2	C-101	15000+00	North Side of Lower Bellamy Street
Trench	Private Residence	51-13-4-3	C-101	15000+00	North Side of Lower Bellamy Street
Trench	Private Residence	51-13-2	C-101	15000+00	South Side of Lower Bellamy Street
Trench	Private Residence	51-13-3	C-101	15000+00	South Side of Lower Bellamy Street
Trench	Private Residence	51-13-2-4	C-101	15000+50	South Side of Lower Bellamy Street
Trench	Private Residence	51-13-3	C-101	15001+00	East of Lower Bellamy Street - East side of CP Rail
Trench	Private Residence	51-17-4-1	C-101	15006+75	North of Division Street - East side of CP Rail
Trench	Commercial Business - New Woman II	51-17-4-0	C-101	15007+50	East of Broadway Street/Rte. 22 - East side of CP Rail
Trench	Commercial Warehouse/Storage	51-17-4-39	C-101	15008+25	East of Broadway Street/Rte. 22/Sandwich St. - East side of CP Rail
Trench	Commercial Building - 1st Presbyterian Church - Whitehall	51-17-2-21	C-101	15008+00	West of Broadway Street/Rte. 22 - West side of CP Rail
Trench	Commercial Building – Longfitts Boat Service	51-17-6-3	C-101	15010+00	West of Broadway Street/Rte. 22 - West side of CP Rail
Trench	Commercial Warehouse/Storage	51-17-4-30	C-101	15009+50	East of Broadway Street/Rte. 22 - East side of CP Rail
Trench	Commercial Building	51-17-4-25	C-101	15010+50	East of Broadway Street/Rte. 22 - East side of CP Rail
Trench	Private Residence	51-17-6-4	C-101	15010+50	West of Broadway Street/Rte. 22 - West side of CP Rail
Trench	Commercial Building	51-17-4-24	C-101	15011+00	East of Broadway Street/Rte. 22 - East side of CP Rail
Trench	Private Residence	51-17-6-5	C-101	15011+00	West of Broadway Street/Rte. 22 - West side of CP Rail
Trench	Commercial Building	51-17-4-23 and 51-17-4-22	C-101	15011+50	East of Broadway Street/Rte. 22 - East side of CP Rail
Trench	Private Residence	51-17-6-7	C-101	15011+50	West of Broadway Street/Rte. 22 - West side of CP Rail
Trench	Commercial Building	51-17-4-21	C-101	15012+00	East of Broadway Street/Rte. 22 - East side of CP Rail
Trench	Private Residence	51-17-6-8	C-101	15012+00	West of Broadway Street/Rte. 22 - West side of CP Rail
Trench	Private Residence	51-17-6-8	C-101	15012+50	West of Broadway Street/Rte. 22 - West side of CP Rail
Trench	Private Residence	51-17-6-12	C-101	15013+00	West of Broadway Street/Rte. 22 - West side of CP Rail
Trench	Private Residence	51-17-6-12.1	C-101	15014+00	West of Broadway Street/Rte. 22 - West side of CP Rail
Trench	Whitehall Fire Department	51-17-4-20	C-101	15014+00	East of Broadway Street/Rte. 22 - East side of CP Rail
Trench	Commercial Building - Vacant	51-17-6-14.1	C-101	15015+00	West of Broadway Street/Rte. 22 - North of Chapin Alley - West side of CP Rail
Trench	Commercial Building - Camo's Collectibles	51-17-6-15	C-101	15015+00	West of Broadway Street/Rte. 22 - North of Chapin Alley - West side of CP Rail
Trench	Commercial Building - US Post Office	51-17-6-16	C-102	15016+25	West of Broadway Street/Rte. 22 - South of Chapin Alley - West side of CP Rail
Trench	Commercial Building - Police Station	60- 5-5-1	C-102	15017+00	East of Broadway Street/Rte. 22 - East side of CP Rail



File: V:\PROJECTS\ANY\6\06076\_000\09\_DESIGN\DRAWINGS\01\_SHEETS\DESIGN PACKAGE\10\06076\_P1C - G-011.DWG Saved: 3/17/2023 8:27:20 AM Plotted: 3/17/2023 8:30:31 AM Current User: Boulton, Hugo LastSavedBy: 7895

Co-located Utilities			
Utility Type Underground (UG) Overhead (OH)	Parallel or Perpendicular to the Alignment	Location (Approximate - See Drawings for Details)	
		Station - Starting Point for Parallel and Crossing Point for Perpendicular	Station - Ending Point for Parallel
Water Line	Parallel	15000+00	15000+75
Storm Sewer	Parallel	15000+00	15003+00
UG Utility (Fiber)	Parallel	15000+93	15299+50
UG Utility (Fiber)	Parallel	15000+93	15002+00
UG Utility (Fiber)	Parallel	15000+93	15297+50
Storm Sewer	Parallel	15001+00	15003+75
UG Utility (Fiber)	Parallel	15002+38	15015+53
OH Utility (Telephone)	Perpendicular	15002+71	N/A
OH Utility (Electric)	Perpendicular	15002+74	N/A
OH Utility (Telephone)	Perpendicular	15006+68	N/A
OH Utility (Electric)	Perpendicular	15006+72	N/A
Sanitary Sewer	Perpendicular	15007+19	N/A
OH Utility (Electric)	Perpendicular	15008+62	N/A
OH Utility (Electric)	Perpendicular	15008+66	N/A
OH Utility (Telephone)	Perpendicular	15008+73	N/A
Storm Drainage Pipe/Culvert	Perpendicular	15009+45	N/A
Water Line	Perpendicular	15012+50	N/A
Water Line	Perpendicular	15012+75	N/A
Storm Sewer	Perpendicular	15012+89	N/A
Storm Sewer	Perpendicular	15013+70	N/A
OH Utility (Telephone)	Perpendicular	15013+80	N/A
Storm Drainage Pipe/Culvert	Perpendicular	15014+11	N/A
Sanitary Sewer	Perpendicular	15015+33	N/A
UG Utility (Fiber)	Parallel	15015+48	15016+23
OH Utility (Electric)	Perpendicular	15015+52	N/A
Storm Drainage Pipe/Culvert	Perpendicular	15015+96	N/A
Storm Drainage Pipe/Culvert	Perpendicular	15016+00	N/A
Sanitary Sewer	Parallel	15016+55	15028+64
Storm Sewer	Perpendicular	15017+80	N/A
Combine Sanitary and Storm Sewer	Perpendicular	15018+45	N/A
Combine Sanitary and Storm Sewer	Perpendicular	15024+55	N/A
Combine Sanitary and Storm Sewer	Perpendicular	15029+45	N/A
Combine Sanitary and Storm Sewer	Perpendicular	15031+50	N/A
OH Utility (Telephone)	Perpendicular	15032+00	N/A
OH Utility (Electric)	Perpendicular	15032+04	N/A
Storm Sewer	Perpendicular	15033+10	N/A
Sanitary Sewer	Parallel	15033+64	15039+81
Water Line	Perpendicular	15033+71	N/A
Storm Sewer	Perpendicular	15035+55	N/A
UG Utility (Fiber)	Parallel	15036+81	15041+50
OH Utility (Electric)	Perpendicular	15037+06	N/A
UG Utility (Telephone)	Parallel	15037+25	15041+51
Combine Sanitary and Storm Sewer	Perpendicular	15039+85	N/A
UG Utility (Fiber)	Parallel	15043+02	15045+21
Water Line	Perpendicular	15045+45	N/A
Combine Sanitary and Storm Sewer	Perpendicular	15047+50	N/A
UG Utility (Electric)	Perpendicular	15047+50	N/A

Table 12.3 – Road and Highway Crossings and Parallel Construction						
Segment/ Package	Municipality	Jurisdiction	Description	Crossing Method	Sheet Number	Location (Approximate see Drawings for Details)
3/1C	Whitehall	Whitehall	Lower Bellamy Street	Parallel Construction Open Trench	C-101	15000+00 to 15001+00
3/1C	Whitehall	Whitehall	Clinton Street	Under DOT#248- 962C bridge. Open Trench.	C-101	15003+00
3/1C	Whitehall	Whitehall	Division Street and Sanders Street	Under DOT #248- 961 V Bridge. Open Trench.	C-101	15006+69 to 15009+25
3/1C	Whitehall	NYSDOT	Poultney Street	Under DOT#248- 960N Bridge. Open Trench	C-103	15033+00 to 15034+00
3/1C	Whitehall	Privately Owned	CP Rail MP 75.36 DOT#249-264M	Open Trench	C-111	15150+30
3/1C	Whitehall	Whitehall	Ryder Road	Open Trench	C-119	15281+00

Note: Table 12.3 describes the road and highway crossings within this Package. All road and highway crossings will follow the specifications in Section 4.4 and 12.2.

ROAD AND HIGHWAY CROSSINGS AND PARALLEL CONSTRUCTION



IT IS A VIOLATION OF LAW FOR ANY PERSON, UNLESS THEY ARE ACTING UNDER THE DIRECTION OF A LICENSED PROFESSIONAL ENGINEER, ARCHITECT, LANDSCAPE ARCHITECT OR LAND SURVEYOR TO ALTER AN ITEM IN ANY WAY. IF AN ITEM BEARING THE STAMP OF A LICENSED PROFESSIONAL IS ALTERED, THE ALTERING ENGINEER, ARCHITECT, LANDSCAPE ARCHITECT OR LAND SURVEYOR SHALL STAMP THE DOCUMENT AND INCLUDE THE NOTATION "ALTERED BY" FOLLOWED BY THEIR SIGNATURE, THE DATE OF SUCH ALTERATION, AND A SPECIFIC DESCRIPTION OF THE ALTERATION.

0	03/22/2023	ISSUED FOR CONSTRUCTION SUBMISSION					JTM	JPR	
No.	DATE	SUBMITTAL / REVISION DESCRIPTION					DB	APP	

Table 8.4 – Tree and Vegetation Clearing Locations					
Segment/ Package	Description	Sheet Number	Location (Approximate - See Drawings for Details)	Vegetation/ Tree Clearing Method Type	Applicable Environmental Sensitive Area Requirements
3/1C	Tree Clearing	C-101	15090-00 to 15093-09	Type I	Residential Area
3/1C	Tree & Vegetation Clearing	C-102	15017-25 to 15018-25 15018-50 to 15019-75 15020-00 to 15021-50 15021-75 to 15026-75 15028-50 to 15029-00	Type I & IV	Residential Area
3/1C	Vegetation Clearing	C-102 to C-103	15029-75 to 15033-25 15030-25 to 15031-00 15032-25 to 15033-25 15034-75 to 15035-75	Type I	Residential Area
3/1C	Tree Clearing	C-103	15037-25 to 15037-75 15038-75 to 15040-00 15041-25 to 15042-25 15042-75 to 15045-00	Type IV	Residential Area
3/1C	Vegetation Clearing	C-103	15030-00 to 15033-00 15034-00 to 15037-00 15038-75 to 15040-00 15041-25 to 15045-50	Type II, III	N/A
3/1C	Tree Clearing	C-104	15045-50 to 15045-75 15046-25 to 15046-50 15055-75 to 15056-75 15057-50 to 15057-75 15058-00 to 15058-50	Type IV	N/A
3/1C	Vegetation Clearing	C-104	15046-00 to 15048-50 15049-00 to 15052-00	Type II, III	N/A
3/1C	Vegetation Clearing	C-104 to C-105	15055-00 to 15062-50 15060-00 to 15060-50 15062-25 to 15062-75 15063-50 to 15064-50 15065-00	Type II, III	N/A
3/1C	Tree Clearing	C-105	15065-75 to 15074-25 15095+00	Type IV	Wetlands
3/1C	Tree Clearing	C-107	15096-00 to 15097-50	Type IV	Wetland G-R-X
3/1C	Vegetation Clearing	C-107	15123-00 15130-50 to 15131-00 15134-15135+00	Type IV	Wetland G-R-X
3/1C	Tree Clearing	C-109	15137-00 to 15139-25 15137-00 to 15137-25	Type I	Wetland G-R-X
3/1C	Vegetation Clearing	C-110	15138-00 to 15139-75 15143-00 to 15150-00	Type IV	Wetland G-R-X
3/1C	Tree Clearing	C-110	15144-50 to 15176-00	Type IV	Wetland G-R-X
3/1C	Vegetation Clearing	C-110 to C-112	15182-00 to 15189-00 15189-50 to 15190-25 15191-25 to 15218-50 15182-00 to 15184-00 15186-50	Type I, II, III	Wetland G-R-X, Agricultural Lands
3/1C	Tree Clearing	C-111	15150-00 to 15159-25 15150-50 to 15159-00 15159-50 to 15163-00	Type IV	Wetland G-R-X
3/1C	Tree Clearing	C-112	15171-00 to 15175-25	Type IV	Wetland GRU
3/1C	Vegetation Clearing	C-113	15182-00 to 15189-00 15189-50 to 15190-25	Type I, II, III	Wetland G-R-W
3/1C	Vegetation Clearing	C-113 to C-115	15191-25 to 15218-50 15182-00 to 15184-00 15186-50	Type I, II, III	Wetland G-R-W
3/1C	Tree Clearing	C-113	15187-50 15190-00 to 15190-50 15191-00 to 15193-75 15194-25 to 15195-00	Type IV	N/A
3/1C	Tree Clearing	C-114	15195-00 to 15198-75 15200-50 to 15203-50 15203-75 to 15210-00	Type IV	N/A
3/1C	Vegetation Clearing along Access Road	C-114-C-213	15196+50	Type I, II, III	Wetland CC
3/1C	Vegetation Clearing	C-116 to C-118	15231-25 to 15256-50	Type I, II, III	Wetland G-R-X, Agricultural Lands
3/1C	Tree Clearing	C-116	15233-50 to 15234+50	Type IV	Agricultural Lands
3/1C	Tree & Vegetation Clearing along Access Road	C-117-C-214	15241+00	Type IV	Wetland G-R-X, Agricultural Lands
3/1C	Tree Clearing	C-117	15252-50 to 15254+00	Type IV	Wetland G-R-X, Agricultural Lands
3/1C	Vegetation Clearing	C-118 to C-119	15274-50 to 15280-75	Type I	Wetland G-R-X, Agricultural Lands
3/1C	Tree Clearing	C-118	15268-75 to 15269-75	Type IV	Wetland G-R-X, Agricultural Lands
3/1C	Vegetation Clearing	C-119 to C-120	15281-25 to 15296-50	Type I	Wetland G-R-Y, Agricultural Lands
3/1C	Tree Clearing	C-119	15280-00 to 15280-75 15281-25 to 15283-00	Type IV	Wetland G-R-Y & G-R-Y, Agricultural Lands
3/1C	Tree Clearing	C-120	15291-50, 15294+00 to 15294-50	Type IV	Wetland G-R-Y
3/1C	Vegetation Clearing	C-121	15301-25 to 15306-00	Type II, III	N/A
3/1C	Tree Clearing	C-121	15302-50 to 15303-25 15304-00 to 15304+50	Type IV	Wetland CBI

Note: Table 8.4 identifies the clearing locations and methods within this Package. The following sections describe the procedures that will be followed for these environmentally sensitive areas.  
1. Wetlands: Section 8.2.1 and 9.1.  
2. Stream Crossing: Section 8.2.1 and Section 9.1.  
3. Threatened and Endangered Species/Sensitive Habitats: Section 9.3.  
4. Agricultural Lands: Section 8.2.2.

SEGMENT 3 – TREE AND CLEARING LOCATIONS

Table 13.4 - Parallel Railroad Construction		
Railroad Owner	Railroad Milepost	Approximate Station Location (See Drawings for Details)
CP Rail	MP 78.11 to MP 72.42	15001+00 to 150303+00 (C-101 to C-121)

Note: Table 13.4 describes the parallel railroad construction within this Package. Section 13.2 describes the procedures to be followed during all parallel railroad construction.

SEGMENT 3 – PARALLEL RAILROAD CONSTRUCTION

CHAMPLAIN HUDSON POWER EXPRESS  
SEGMENT 3 (PACKAGE 1C ) WHITEHALL TO FORT ANN  
EM&CP DATA TABLES (3 OF 3)

KIEWIT PROJECT NO. 21162	DATE 03/22/2023
CHA PROJECT NO. 068076	
DRAWING NO. G-013	
SCALE AS NOTED	
DRAWN BY: JUE	DESIGNED BY: JTM
APPROVED BY: JPR	REV. NO. X

Table 13.1 – Co-located Infrastructure Consultation Summary					
Owner	Utility	Initial Contact Date	CI Owner Response	Outreach Mailing #2	Outreach Mailing #3
AT&T	Fiber/ Telephone	9/9/21	Crossing conditions received	1/27/22 email sent with .kmz digital map of route and request for records, data & information of CI	7/11/22 (Pkg 1C) & 7/15/22 (Pkg 2) Plan & Profile drawings provided for review.
Level 3 Communications (now Lumen Technologies)	Fiber	9/10/21	Support services agreement in place. Crossing conditions received.	1/27/22 email sent with .kmz digital map of route and request for records, data & information of CI	7/11/22 (Pkg 1C) & 7/15/22 (Pkg 2) Plan & Profile drawings provided for review.
National Grid/ East/ Electric	Electric	9/10/21	Crossing conditions received.	1/27/22 email sent with .kmz digital map of route and request for records, data & information of CI along Project Corridor. Received locations of overhead electric lines.	Consultations on going/ outreach not provided to date
Time Warner Cable (Charter Communications/ Spectrum)	Fiber/CATV	9/23/21	No action required until plans are available for review.	1/27/22 email sent with .kmz digital map of route and request for records, data & information of CI along Project Corridor.	7/11/22 (Pkg 1C) & 7/15/22 (Pkg 2) Plan & Profile drawings provided for review.
Verizon or Verizon/East	Telecom; Fiber/ Telephone	9/10/21	No action required until plans are available for review.	1/27/22 email sent with .kmz digital map of route and request for records, data & information of CI along Project Corridor.	7/11/22 (Pkg 1C) & 7/15/22 (Pkg 2) Plan & Profile drawings provided for review.
Washington County	Route 4, Storm Sewers	5/31/21 Zoom Meeting	N/A	N/A	Plans and profiles were submitted to Washington County for review on 7/18/22.
Village of Whitehall	Storm Sewer, Sanitary Sewer, Water Lines	10/7/21	N/A	N/A	Pkg 1C Plans and profiles were submitted for review on 7/11/22.
Town of Fort Ann	None	N/A	N/A	N/A	Plans and profiles were submitted for review on 07/18/22.
Town of Kingsbury	None	N/A	N/A	N/A	Plans and profiles were submitted to Washington County for review on 7/18/22.

Note: Table 13.1 describes the CI owners that were identified within this Package. Section 13.1 and Appendix R describe the consultation between CI owners and the Certificate Holders.

SEGMENT 3 – CO-LOCATED INFRASTRUCTURE CONSULTATION SUMMARY

Table 13.3. Segment 3 CP Rail Coordination Summary

Coordinating Parties	Description	Current Status
CP Rail, Certificate Holders	Pre-Construction Planning: CP Rail has provided construction requirements including a minimum 6.6 feet of separation from centerline of track.	Regular meetings to discuss project; Plans and Profiles have been provided for review and comment.
CP Rail, Certificate Holders	Construction Permitting: Certificate Holders will need to have all at grade rail crossing (for access roads) and HDD crossings (for the conduit) permitted by CP Rail prior to discussion.	Regular meetings to discuss project

Note: Table 13.3 summarizes the pre-construction coordination with CP Rail. To the extent practicable, construction of the Project will be conducted in accordance with the policies and guidelines identified in Appendix U so as to avoid any interference with interruption, or endangerment of any CP operations and facilities. If any procedure outlined in Appendix U cannot be followed, the Certificate Holders will seek a waiver and/or approval from CP Rail. The Certificate Holders will continue to coordinate directly with CP Rail and DPS staff throughout construction.

SEGMENT 3 – CP RAILROAD COORDINATION SUMMARY

Table 13.2 - CP Railroad Crossings				
Segment/Package	Crossing ID	Crossing Method	Sheet Number	Location (Approximate see Drawings for Details)
3/1C	Railroad Spur CP Rail MP 77.01	Open trench	C-105	15062+00 to 15063+00
3/1C	CP Rail Crossing MP 75.10-74.95	HDD#4A	C-111 to C-112	15162+87 to 15171+57
3/1C	CP Rail Crossing MP 74	HDD#6	C-115 to C-116	15217+00 to 15233+00
3/1C	CP Rail Crossing MP 117.55	HDD#8	C-120 to C-121	15296+00 to 15303+00

Note: Table 13.2 describes the CP Railroad crossings within this Package. Access roads that cross the railroad are described in Table 4.6 and Section 4.10. Section 13.2 describes the procedures that will be followed for all railroad crossings.

SEGMENT 3 – CP RAILROAD CROSSINGS

B



CLEANUP AND RESTORATION NOTES

PROMPT CLEANUP AND RESTORATION OF ALL AREAS DISTURBED BY CONSTRUCTION ACTIVITY IS A PRIORITY OF THE CONSTRUCTION SCHEDULE AND SEQUENCING. TIMELY CLEANUP AND RESTORATION WILL ASSIST IN MINIMIZING POTENTIAL ENVIRONMENTAL IMPACTS ASSOCIATED WITH THE PROJECT. PROCEDURES FOR CLEANUP AND RESTORATION ARE DESCRIBED IN SECTION 14. IN ACCORDANCE WITH CERTIFICATE CONDITION 48, WITHIN TEN (10) DAYS OF THE COMPLETION OF FINAL RESTORATION ACTIVITIES, THE CERTIFICATE HOLDER WILL NOTIFY THE SECRETARY THAT ALL RESTORATION HAS BEEN COMPLETED IN COMPLIANCE WITH THE CERTIFICATE AND THE ORDER(S) APPROVING THE EM&CP.

CLEANUP STANDARDS AND PRACTICES

AS DESCRIBED IN THE BMP DOCUMENT, CLEANUP, RESTORATION, AND REVEGETATION PROCEDURES WILL BE ONGOING DURING CONSTRUCTION AS EACH SEGMENT IS COMPLETED. DURING CONSTRUCTION, ROAD AND CONSTRUCTION ROWS WILL BE KEPT FREE OF DEBRIS AND DISCARDED MATERIAL TO THE GREATEST EXTENT POSSIBLE. AS CONSTRUCTION CONTINUES, EACH SECTION OF THE ROW WILL BE THOROUGHLY CLEANED AFTER CONSTRUCTION IS COMPLETED ON THAT PARTICULAR SECTION. ALL FABRICATED DEBRIS RESULTING FROM CONSTRUCTION WILL BE DISPOSED OF AT AN APPROVED DISPOSAL SITE IN COMPLIANCE WITH ALL APPROPRIATE ENVIRONMENTAL REGULATIONS. FABRICATED DEBRIS GENERATED DURING CONSTRUCTION INCLUDES PIPING, FENCING, WIRING, AND ANY OTHER MATERIALS USED DURING CONSTRUCTION. NO FABRICATED DEBRIS IS TO BE BURNED OR BURIED. ALL TRUCKS LEAVING THE CONSTRUCTION AREA WILL BE LOADED AND COVERED IN ACCORDANCE WITH APPLICABLE REGULATIONS AS NEEDED AS DESCRIBED IN THE SOIL AND MATERIALS MANAGEMENT PLAN OF THE EM&CP IN APPENDIX L.

RESTORATION AND PLANTING

THE FINAL STAGE OF CONSTRUCTION WILL CONSIST OF RESTORING THE ROAD AND CONSTRUCTION ROWS AND THIS SEGMENT TO ITS ORIGINAL CONDITION AND CHARACTER AS MUCH AS POSSIBLE/IS PRACTICAL, UNLESS DOING SO WOULD INTERFERE WITH THE SAFE OR RELIABLE OPERATION AND MAINTENANCE OF THE PROJECT. RESTORATION ACTIVITIES MAY VARY WITH THE SPECIFIC AREA TO BE RESTORED BUT WILL CONSIST PREDOMINANTLY OF RESTORING TOPOGRAPHY TO ORIGINAL GRADIENTS AND RESEEDING EXCAVATED AREAS OVER THE TRENCH AS IDENTIFIED HEREIN.

SITE PREPARATION FOR REVEGETATION

THE SURFACE OF THE ROAD AND CONSTRUCTION ROWS DISTURBED BY CONSTRUCTION ACTIVITIES WILL BE GRADED TO MATCH THE ORIGINAL TOPOGRAPHIC CONTOURS AND TO BE COMPATIBLE WITH SURROUNDING DRAINAGE PATTERNS WHERE APPROPRIATE. IT SHOULD BE NOTED THAT SUBCONTRACTORS WILL TYPICALLY LIMIT GRUBBING (THE REMOVAL OF STUMPS AND ROOTS) TO THE FOOTPRINT OF THE EXCAVATED TRENCH AND ACCESS ROADS TO ALLOW RE-SPROUTING AND ASSIST IN THE RECOVERY OF WOODY SPECIES, EXCEPT WHERE REMOVAL IS REQUIRED FOR SAFE CONSTRUCTION. WHERE NEEDED, IT MAY BE NECESSARY TO IMPORT TOPSOIL TO RETURN AN AREA TO GRADE. IMPORTED TOPSOIL WILL FOLLOW CLASSIFICATION AND CHARACTERIZATION MEASURES OUTLINED IN THE SOIL AND MATERIALS MANAGEMENT PLAN IN APPENDIX L. HDD ENTRY AND EXIT PITS WILL BE BACKFILLED AND THE DISTURBED GROUND SURFACE WILL BE SIMILARLY GRADED. THE ENTRY AND EXIT POINTS FOR EACH HDD CROSSING ARE DESCRIBED IN TABLE 5.2. TRENCHES WILL BE BACKFILLED IN ACCORDANCE WITH THE MEASURES OUTLINED IN SECTION 4.4. THE CERTIFICATE HOLDER WILL BE RESPONSIBLE FOR CHECKING ALL CULVERTS AND ASSURE THAT THEY ARE NOT CRUSHED OR BLOCKED DURING CONSTRUCTION AND RESTORATION OF THIS SEGMENT AND, IF A CULVERT IS BLOCKED OR CRUSHED, TAKE IMMEDIATE STEPS TO REPLACE OR REPAIR THE CULVERT IN ACCORDANCE WITH APPLICABLE STATE OR LOCAL STANDARDS.

RESTORATION OF CONSTRUCTION MATERIALS AND EQUIPMENT STAGING LOCATIONS AND TEMPORARY ACCESS ROADS

THE CONSTRUCTION MATERIALS AND EQUIPMENT STAGING LOCATIONS FOR THIS SEGMENT ARE SUMMARIZED IN TABLE 5.2 OF THE EM&CP AND ARE SHOWN IN THE PLAN AND PROFILE DRAWINGS AND ESCP. THESE AREAS WILL BE RESTORED AS CLOSE AS PRACTICABLE TO PRE-CONSTRUCTION CONDITIONS AND CONTOURS TO THE EXTENT PRACTICABLE.

ALL TEMPORARY FENCING AND EROSION CONTROLS WILL BE REMOVED AND DISPOSED OF IN AN ACCEPTABLE MANNER AT A STATE APPROVED DISPOSAL FACILITY APPROVED BY DPS STAFF AND THE CERTIFICATE HOLDERS. ALL MOTORIZED CONSTRUCTION EQUIPMENT WILL BE TRANSPORTED TO OFF-SITE FACILITIES. ALL OTHER USABLE CONSTRUCTION EQUIPMENT AND MATERIALS WILL BE COLLECTED, PACKED, AND TRANSPORTED TO OFF-SITE STORAGE FACILITIES OR TO THE NEXT SEGMENT'S STAGING AREA AS NEEDED. ALL UNUSABLE EQUIPMENT AND MATERIALS WILL BE REMOVED FROM THE LAYDOWN YARD AND DISPOSED OF APPROPRIATELY.

SEEDING AND PLANTING

AS DESCRIBED IN THE BMP DOCUMENT, SEEDING OPERATIONS ACROSS THE 35-FOOT-WIDE CONSTRUCTION AND FACILITY ROW AS WELL AS WITHIN STAGING AND LAYDOWN AREAS WILL COMMENCE ONLY AFTER AN ACCEPTABLE SEEDBED HAS BEEN ESTABLISHED, AS DESCRIBED ABOVE. SEED WILL BE APPLIED BY HAND, OR VIA HYDRO-SEEDERS. THE ENTIRE SEEDED AREA WILL BE WATERED WITH A FINE SPRAY, AS NECESSARY, UNTIL A UNIFORM MOISTURE DEPTH OF APPROXIMATELY ONE (1) INCH HAS BEEN ACHIEVED AS APPLICABLE. MULCHING AND ANCHORING OF THE MULCH MAY BE NECESSARY IN SOME AREAS UNLESS A HYDOMULCH/SEED SLURRY IS USED. ON STEEP SLOPES, JUTE NET WILL BE USED TO PROVIDE STABILIZATION. FERTILIZER WILL BE ADDED, AS APPLICABLE, AT THE APPROPRIATE RATES AFTER SEED IS APPLIED AND/OR TO A HYDOMULCH/SEED SLURRY. NO FERTILIZER WILL BE APPLIED IN WETLAND RESOURCE AREAS. SEDING/MULCHING WILL TAKE PLACE UNDER THE SUPERVISION OF THE ENVIRONMENTAL INSPECTOR. THE SEED MIXTURE AND RATE OF APPLICATION WILL DEPEND ON THE SOIL TYPE, LAND USE, AVAILABLE MOISTURE, AND SEASON AT THE TIME OF APPLICATION. SEEDBED PREPARATION (FINAL TILLAGE, FERTILIZING, LIMING) AND SEEDING WILL FOLLOW RECOMMENDATIONS AS CONTAINED IN NEW YORK STATE FARMLAND: SEEDING, FERTILIZING AND LIME RECOMMENDATIONS FOR GAS PIPELINE ROW RESTORATION IN FARMLANDS (REVISED 4-27-2011) IF APPLICABLE OR AS SPECIFIED BY THE LANDOWNER. ALL SEED MIXES WILL BE FREE OF INVASIVE SPECIES. ALL SEED BAG TAGS (EITHER ORIGINAL OR SCANNED COPIES) WILL BE PROVIDED TO THE ENVIRONMENTAL INSPECTOR. SEEDED AREAS WILL BE MONITORED FOLLOWING RESTORATION UNTIL A MINIMUM VEGETATIVE COVER OF EIGHTY (80) PERCENT IS ACHIEVED. THE SEED MIXTURES WILL FOLLOW THE TECHNICAL SPECIFICATIONS INCLUDED ON THE PLAN AND PROFILE DRAWINGS IN APPENDIX C FOR UPLANDS AND WETLAND BUFFER ZONES. FOR WETLAND RESOURCE AREAS, EMERGENT COMMUNITIES SHOULD BE REVEGETATED WITH AN ERNST FACW WETLAND MEADOW MIX (ERNMX-122) OR EQUIVALENT, AND FOR SHADED SITES WITHIN FORESTED/SHRUB-SHRUB WETLAND COMMUNITIES, DISTURBED AREAS SHOULD BE REVEGETATED WITH ERNST SPECIALIZED WETLAND MIX FOR SHADED AREAS (ERNMX-137) OR EQUIVALENT.

THE MAJORITY OF SOIL DISTURBANCE FOR THIS SEGMENT WILL BE WITHIN THE TRENCH-LINE FOR THE CONDUIT/CABLE. HOWEVER, SOME DISTURBANCE WILL ALSO OCCUR DURING INSTALLATION AND REMOVAL OF TEMPORARY ACCESS ROADS AS DESCRIBED IN SECTION 4.10 OF THE EM&CP. ALL TRENCH AREAS AND OTHER EXCAVATED AREAS WILL BE RESEED WITH AN APPROPRIATE SEED MIX AS IDENTIFIED ABOVE. VEGETATION THROUGHOUT THE CONSTRUCTION ROW WILL BE CUT TO GROUND LEVEL AND ROOT SYSTEMS WILL REMAIN INTACT TO ALLOW FOR RESPROUTING FOLLOWING CONSTRUCTION, UNLESS RESPROUTING WOULD INTERFERE WITH THE SAFE AND RELIABLE OPERATION OF THE PROJECT.

WHEN TREE CLEARING IS REQUIRED, ALL TREES OVER TWO (2) INCHES IN DBH OR SHRUBS OVER FOUR (4) FEET IN HEIGHT THAT ARE DAMAGED OR DESTROYED BY ACTIVITIES DURING CONSTRUCTION, OPERATION, OR MAINTENANCE WITHIN ASSOCIATED URBAN, RESIDENTIAL, LANDSCAPED AREAS, AND RECREATIONAL AREAS, WILL BE REPLACED WITHIN THE FOLLOWING YEAR BY THE CERTIFICATE HOLDERS WITH THE EQUIVALENT TYPE OF TREES OR SHRUBS EXCEPT IF:

- a)EQUIVALENT TYPE REPLACEMENT TREES OR SHRUBS WOULD INTERFERE WITH THE PROPER CLEARING, CONSTRUCTION, OPERATION, OR MAINTENANCE OF THE PROJECT OR WOULD BE INCONSISTENT WITH STATE-INVASIVE SPECIES POLICY; OR
- b)REPLACEMENT WOULD BE CONTRARY TO SOUND ROW MANAGEMENT PRACTICES, OR TO ANY APPROVED LONG-RANGE ROW MANAGEMENT PLAN APPLICABLE TO THE FACILITY OR ADJOINING ROW; OR
- c)THE OWNER OF LAND WHERE THE DAMAGED OR DESTROYED TREES OR SHRUBS WERE LOCATED (OR OTHER RECORDED EASEMENT OR LICENSE HOLDERS WITH THE RIGHT TO CONTROL REPLACEMENT) DECLINES REPLACEMENT.

RESTORATION OF WATERBODIES

DIRECT IMPACTS TO STREAMS AND WATERBODIES ASSOCIATED WITH THIS SEGMENT HAVE BEEN AVOIDED BY CROSSING OVER OR UNDER EXISTING CULVERTS, AND INCORPORATING HDD METHODS. HOWEVER, IF IMPACTS TO WATERBODIES DO OCCUR, PER THE CERTIFICATE CONDITION 117 , THE CERTIFICATE HOLDERS HAVE ESTABLISHED AND WILL IMPLEMENT THE FOLLOWING PROGRAM TO MONITOR THE SUCCESS OF STREAM RESTORATION UPON COMPLETION OF CONSTRUCTION AND RESTORATION ACTIVITIES. PER CONDITIONS K AND L OF THE USACE PERMIT, THE FOLLOWING WILL DETERMINE IF STREAM AND RESTORATION IS SUCCESSFUL:

1. ALL PLANTINGS HAVE AN 85% SURVIVAL RATE
2. ALL ESTABLISHED WETLAND AREAS IN CONJUNCTION WITH THE COMPENSATORY MITIGATION HAVE AN 85% COVERAGE RATE OF HYDROPHYTIC PLANTS.
3. VEGETATION IN NEWLY ESTABLISHED WETLAND AREAS DO NOT CONSIST OF MORE THAN 5% TOTAL AREAL COVERAGE OF COMMON REED GRASS, PURPLE LOOSESTRIFE, REED CANARY GRASS, JAPANESE KNOTWOOD, TARTARIAN HONEYSUCKLE, EURASIAN MILFOIL, AND/OR OTHER INVASIVE SPECIES.

PER CONDITION NN OF THE USACE PERMIT THE CERTIFICATE HOLDERS, SHALL PROVIDE ADDITIONAL MONITORING REPORTS, AS DIRECTED IN WRITING, SHOULD IT BE DETERMINED THAT THE WETLAND MITIGATION SUCCESS CRITERIA LISTED ABOVE HAVE NOT BEEN MET FOR THREE CONSECUTIVE YEARS.

RESTORATION OF WETLANDS

THESE AREAS WILL BE RESTORED IN ACCORDANCE WITH SECTION 14.4.2 OF THE EM&CP AS CLOSE AS PRACTICABLE TO PRE-CONSTRUCTION CONDITIONS AND CONTOURS. ALL TEMPORARY FENCING AND EROSION CONTROLS WILL BE REMOVED AND DISPOSED OF IN AN ACCEPTABLE MANNER AT A STATE APPROVED DISPOSAL FACILITY APPROVED BY DPS STAFF AND THE CERTIFICATE HOLDER. ALL MOTORIZED CONSTRUCTION EQUIPMENT WILL BE TRANSPORTED TO OFF-SITE FACILITIES. ALL WETLAND MATS AND MATERIALS WILL BE COLLECTED, PACKED, AND TRANSPORTED TO OFF-SITE STORAGE FACILITY OR TO THE NEXT SEGMENT'S STAGING AREAS NEEDED.

PLANT INSPECTION. GUARANTEE AND MAINTENANCE

VEGETATION RESTORATION ALSO INCLUDES THE MAINTENANCE OF PLANTINGS FOR SPECIFIED TIME PERIODS AND THE REPLACEMENT OF UNSUCCESSFUL PLANTINGS. PRIOR TO PLANTING, THE ENVIRONMENTAL INSPECTOR WILL INSPECT ALL PLANTS IN CONTAINERS. PLANTINGS WILL BE PERFORMED BY A QUALIFIED LANDSCAPE OR NURSERY CONTRACTOR. THE ENVIRONMENTAL INSPECTOR WILL ALSO INSPECT ALL PLANTS AFTER COMPETITION OF PLANTING TO ENSURE PROPER PLANTING PROCEDURES AND THE CORRECT PLANT SPECIES WERE USED. ADDITIONALLY, THE ENVIRONMENTAL INSPECTOR WILL CONDUCT A FINAL INSPECTION OF ALL REVEGETATED AREAS AFTER THE END OF THE MONITORING PERIOD TO ENSURE FINAL STABILIZATION. ALL VEGETATION REPLACED WILL HAVE A MINIMUM TWO (2) YEAR SURVIVAL GUARANTEE. AS DESCRIBED IN THE BMP DOCUMENT, WHERE TREE OR SHRUB PLANTINGS ARE NEEDED, A POST CONSTRUCTION SURVIVAL SURVEY WILL BE PERFORMED ONE YEAR AFTER THE PLANTINGS. IF ANY TREE OR SHRUB HAS NOT SURVIVED OR IS IN POOR HEALTH, THE TREE/SHRUB WILL BE REPLACED.

SWPPP INSPECTIONS WILL BE PERFORMED BY THE ENVIRONMENTAL INSPECTOR ON A WEEKLY BASIS UNTIL ALL DISTURBED AREAS HAVE ACHIEVED 80% REVEGETATION AND HAVE ACHIEVED FINAL STABILIZATION. FOLLOWING FINAL RESTORATION, EROSION AND SEDIMENT CONTROL MEASURES WILL BE REMOVED FROM THE SITE AND DISPOSED OF APPROPRIATELY.

RESTORATION WITHIN NYSDOT ROW

ALL RESTORATION WITHIN THE NYSDOT ROW SHALL BE DONE IN ACCORDANCE WITH THE LATEST VERSION OF THE NYSDOT STANDARD SPECIFICATIONS AND STANDARD SHEETS.

RESTORATION OF RECREATIONAL AREAS

FOLLOWING CONSTRUCTION, THE CERTIFICATE HOLDERS WILL RESEED THE CONSTRUCTION AREA WITHIN RECREATIONAL AREAS (WHERE IMPACTED AND IF APPLICABLE) USING THE PROCEDURES AND METHODS SPECIFIED IN THE SECTIONS ABOVE WHERE NEEDED. IF NECESSARY, ADDITIONAL REVEGETATION AND TREE PLANTING MAY BE PERFORMED DEPENDING ON THE IMPACT OF CONSTRUCTION.

ROADWAY RESTORATION (STRIPING, SIGNAGE, AUDIBLE ROADWAY DELINEATORS)

STRIPING IMPACTED OR REMOVED FROM CONSTRUCTION WITHIN THE LIMITS OF WORK, INCLUDING AREAS OF MILL AND OVERLAYS IS TO BE REINSTALLED PER EXISTING STRIPING PATTERNS. CONTRACTOR SHALL INVENTORY ALL STRIPING PRIOR TO WORK. WORK IS TO BE COMPLETED IN ACCORDANCE WITH NYSDOT STANDARD SHEETS AND SPECIFICATIONS (SEE 685 SERIES STANDARD SHEETS). SIGNAGE IMPACTED, DAMAGED OR REMOVED DURING CONSTRUCTION SHALL BE REPLACED IN KIND OR REINSTALLED IN ACCORDANCE WITH NYSDOT STANDARD SHEETS AND SPECIFICATIONS (SEE 645 SERIES STANDARD SHEETS). AUDIBLE ROADWAY DELINEATORS DAMAGED OR REMOVED DUE TO CONSTRUCTION SHALL BE INSTALLED DURING RE-PAVING OPERATIONS IN ACCORDANCE WITH NYSDOT STANDARD SHEET 649-03.

RESTORATION OF ROADWAY

THESE AREAS WILL BE RESTORED AS CLOSE AS PRACTICABLE TO PRE-CONSTRUCTION CONDITIONS AND CONTOURS. TRENCHES WILL BE BACKFILLED PER THE APPROPRIATE DETAIL, FULL WIDTH OF THE TRENCH WILL BE RESTORED TO MATCH THE EXISTING PAVEMENT SECTION, THE FULL WIDTH OF THE TRAVEL LANE TO THE CENTERLINE WILL BE MILLED AND OVERLAYED WITH A TOP COURSE OF ASPHALT. ALL TEMPORARY FENCING AND EROSION CONTROLS WILL BE REMOVED AND DISPOSED ON IN AN ACCEPTABLE MANNER AT A STATE APPROVED DISPOSAL FACILITY APPROVED BY DPS STAFF AND THE CERTIFICATE HOLDERS.

RESTORATION OF ROADWAY SHOULDER

THESE AREAS WILL BE RESTORED AS CLOSE AS PRACTICABLE TO PRE-CONSTRUCTION CONDITIONS AND CONTOURS. TRENCHES WILL BE BACKFILLED PER THE APPROPRIATE DETAIL, FULL WIDTH OF THE TRENCH WILL BE RESTORED TO MATCH THE EXISTING PAVEMENT SECTION, THE FULL WIDTH OF THE TRAVEL LANE TO THE CENTERLINE WILL BE MILLED AND OVERLAYED WITH A TOP COURSE OF ASPHALT. ALL TEMPORARY FENCING AND EROSION CONTROLS WILL BE REMOVED AND DISPOSED ON IN AN ACCEPTABLE MANNER AT A STATE APPROVED DISPOSAL FACILITY APPROVED BY DPS STAFF AND THE CERTIFICATE HOLDERS.

PAVEMENT RESTORATION

AS DESCRIBED IN THE BMP DOCUMENT AND CERTIFICATE CONDITIONS, CURBS, SIDEWALKS, AND STREETS DAMAGED BY CONSTRUCTION WILL BE RESTORED TO PRE-EXISTING CONDITION OR BETTER. FURTHER, DISTURBED AREAS, RUTS, AND RILLS ALONG ROADWAYS SHALL BE RESTORED TO ORIGINAL GRADES AND CONDITIONS WITH PERMANENT REVEGETATION AND EROSION AND CONTROLS APPROPRIATE FOR THOSE LOCATIONS, AS APPROPRIATE. THE CERTIFICATE HOLDERS WILL CONSULT THE MUNICIPAL OR HIGHWAY DEPARTMENT AND OR REGIONAL OFFICE OR COUNTY ENGINEER OF THE NYSDOT IN ORDER TO IDENTIFY AND INCORPORATE APPROPRIATE SPECIFICATIONS FOR CURB, SIDEWALK, OR STREET RESTORATION. ALL SURFACE RESTORATION WILL FOLLOW THE SPECIFICATIONS PROVIDED IN THE PLAN AND PROFILE DRAWINGS. GUIDE RAILS WILL BE REMOVED AND REPLACE IN ACCORDANCE WITH NYSDOT STANDARD SHEET 606.01.

RESTORATION OF RAILWAY BALLAST

UPON COMPLETION OF THE INSTALLATION OF THE OVERLAND TRANSMISSION CABLE, THE SURFACE OF THE RAILROAD ROW DISTURBED BY CONSTRUCTION ACTIVITIES WILL BE GRADED TO MATCH THE ORIGINAL TOPOGRAPHIC CONTOURS AND TO BE COMPATIBLE WITH SURROUNDING DRAINAGE PATTERNS. BACKFILL OR FILL WILL BE COMPACTED TO MATCH SURROUNDING GRADE. THE GROUND COVER WILL BE RETURNED TO PRE-EXISTING CONDITIONS, BY REVEGETATING THE BALLAST OR STABILIZING WITH BALLAST STONE, TO ENSURE PROPER RESTORATION AND PROTECTION OF THE RAILWAY BALLAST. THE RAILROAD OWNERS HAVE BEEN CONSULTED TO ENSURE RESTORATION MEETS THE ENGINEERING REQUIREMENTS OF THE RAILWAYS.

SEED MIXES

- A. GENERAL SEED:
1. PIPELINE MIX W/SWITCHGRASS (ERNMX-102-1)
2. MIX COMPOSITION
- 33.0% PANICUM VIRGATUM, 'SHAWNEE' (SWITCHGRASS, 'SHAWNEE')
- 25.0% FESTUCA RUBRA (CREEPING RED FESCUE)
- 18.0% LOLIUM MULTIFLORUM (ANNUAL RYEGRASS)
- 16.0% PHELEUM PRATENSE, CLIMAX (TIMOTHY, CLIMAX)
- 5.0% TRIFOLIUM HYBRIDUM (ALSIKE CLOVER)
- 3.0% AGROSTIS ALBA (REDTOP)
3. APPLIED AT A RATE OF 40 LBS/ACRE.
- B. ADIRONDACK SEED:
1. MIX COMPOSITION
- 25% VIRGINIA WILD RYE (ELYMUS VIRGINICUS VAR. VIRGINICUS)
- 25% CANADA WILD RYE (ELYMUS CANADENSIS)
- 25% AUTUMN BENTGRASS (AGROSTIS PERENNANS)
- 25% CAMPER LITTLE BLUESTEM (SCHIZACHYRIUM SCOPARIUM)
2. APPLIED AT A RATE OF 40 LBS/ACRE.
- C. SPECIALIZED WETLAND MIX FOR SHADED OBL-FACW AREAS (ERNMX-137)
1. MIX COMPOSITION
- 35.0% CAREX VULPINOIDEA, PA ECOTYPE (FOX SEDGE, PA ECOTYPE)
- 20.0% ELYMUS VIRGINICUS, MADISON-NY ECOTYPE (VIRGINIA WILDRYE, MADISON-NY ECOTYPE)
- 15.0% CAREX SCOPARIA, PA ECOTYPE (BLUNT BROOM SEDGE, PA ECOTYPE)
- 12.8% CAREX LURIDA, PA ECOTYPE (LURID SEDGE, PA ECOTYPE)
- 5.0% CAREX LUPULINA, PA ECOTYPE (HOP SEDGE, PA ECOTYPE)
- 4.0% VERBENA HASTATA, PA ECOTYPE (BLUE VERVAIN, PA ECOTYPE)
- 2.0% HELIOPSIS HELIANTHOIDES, PA ECOTYPE (OXEYE SUNFLOWER, PA ECOTYPE)
- 1.0% CAREX INTUMESCENS, PA ECOTYPE (STAR SEDGE, PA ECOTYPE)
- 1.0% SPARGANIUM AMERICANUM (EASTERN BUR REED)
- 0.7% IRIS VERSICOLOR (BLUEFLAG)
- 0.5% BIDENS CERNUA, PA ECOTYPE (NODDING BUR MARIGOLD, PA ECOTYPE)
- 0.5% CAREX CRINITA, PA ECOTYPE (FRINGED SEDGE, PA ECOTYPE)
- 0.5% CAREX STIPATA, PA ECOTYPE (AWL SEDGE, PA ECOTYPE)
- 0.5% EUPATORIUM PERFOLIATUM, PA ECOTYPE (BONESET, PA ECOTYPE)
- 0.5% SCIRPUS CYPERINUS, PA ECOTYPE (WOOLGRASS, PA ECOTYPE)
- 0.5% VERNONIA NOVEBORACENSIS, PA ECOTYPE (NEW YORK IRONWEED, PA ECOTYPE)
- 0.3% LOBELIA SIPHILITICA, PA ECOTYPE (GREAT BLUE LOBELIA, PA ECOTYPE)
- 0.2% PENTHORUM SEDOIDES, PA ECOTYPE (DITCH STONECROP, PA ECOTYPE)
2. APPLIED AT A RATE OF APPROXIMATELY 20 LBS/ACRE, ALONG WITH THE COVER CROP.
3. COVER CROP SHOULD BE APPLIED AT A RATE OF 60-80 LBS/ACRE. COVER CROP TO BE AN ANNUAL RYE. COVER CROP BASED ON SEASON OF RESTORATION AN ANNUAL RYE THROUGH SPRING AND SUMMER AND WINTER RYE FOR LATE FALL.
- D. FACW WETLAND MEADOW MIX (ERNMX-122)
1. MIX COMPOSITION
- 21.0% CAREX VULPINOIDEA, PA ECOTYPE (FOX SEDGE, PA ECOTYPE)
- 20.0% ELYMUS VIRGINICUS, PA ECOTYPE (VIRGINIA WILDRYE, PA ECOTYPE)
- 16.0% CAREX LURIDA, PA ECOTYPE (LURID SEDGE, PA ECOTYPE)
- 12.0% CAREX LUPULINA, PA ECOTYPE (HOP SEDGE, PA ECOTYPE)
- 12.0% CAREX SCOPARIA, PA ECOTYPE (BLUNT BROOM SEDGE, PA ECOTYPE)
- 3.0% VERBENA HASTATA, PA ECOTYPE (BLUE VERVAIN, PA ECOTYPE)
- 2.4% ASCLEPIAS INCARNATA, PA ECOTYPE (SWAMP MILKWEED, PA ECOTYPE)
- 2.0% JUNCUS EFFUSUS (SOFT RUSH)
- 2.0% ZIZIA AUREA, PA ECOTYPE (GOLDEN ALEXANDERS, PA ECOTYPE)
- 1.6% ASTER NOVAE-ANGLIAE, PA ECOTYPE (NEW ENGLAND ASTER, PA ECOTYPE)
- 1.3% CAREX STIPATA, PA ECOTYPE (AWL SEDGE, PA ECOTYPE)
- 1.0% BIDENS CERNUA, PA ECOTYPE (NODDING BUR MARIGOLD, PA ECOTYPE)
- 1.0% JUNCUS TENUIS, PA ECOTYPE (PATH RUSH, PA ECOTYPE)
- 0.8% SOLIDAGO RUGOSA, PA ECOTYPE (WRINKLELEAF GOLDENROD, PA ECOTYPE)
- 0.6% VERBENA URTICIFOLIA, PA ECOTYPE (WHITE VERVAIN, PA ECOTYPE)
- 0.5% CAREX CRINITA, PA ECOTYPE (FRINGED SEDGE, PA ECOTYPE)
- 0.5% EUPATORIUM PERFOLIATUM, PA ECOTYPE (BONESET, PA ECOTYPE)
- 0.5% HELENIUM AUTUMNALE, PA ECOTYPE (COMMON SNEEZEWEED, PA ECOTYPE)
- 0.5% MINULUS RINGENS, PA ECOTYPE (SQUARE STEMMED MONKEYFLOWER, PA ECOTYPE)
- 0.3% LOBELIA SIPHILITICA, PA ECOTYPE (GREAT BLUE LOBELIA, PA ECOTYPE)
- 0.3% SCIRPUS CYPERINUS, PA ECOTYPE (WOOLGRASS, PA ECOTYPE)
- 0.2% ALISMA SUBCORDATUM, PA ECOTYPE (MUD PLANTAIN, PA ECOTYPE)
- 0.2% ASTER PUNICEUS, PA ECOTYPE (PURPLESTEM ASTER, PA ECOTYPE)
- 0.2% ASTER UMBELLATUS, PA ECOTYPE (FLAT TOPPED WHITE ASTER, PA ECOTYPE)
- 0.1% PENTHORUM SEDOIDES, PA ECOTYPE (DITCH STONECROP, PA ECOTYPE)
2. APPLIED AT A RATE OF APPROXIMATELY 20 LBS/ACRE, ALONG WITH THE COVER CROP.
3. COVER CROP SHOULD BE APPLIED AT A RATE OF 60-80 LBS/ACRE. COVER CROP TO BE AN ANNUAL RYE. COVER CROP BASED ON SEASON OF RESTORATION AN ANNUAL RYE THROUGH SPRING AND SUMMER AND WINTER RYE FOR LATE FALL.



IT IS A VIOLATION OF LAW FOR ANY PERSON, UNLESS THEY ARE ACTING UNDER THE DIRECTION OF A LICENSED PROFESSIONAL ENGINEER, ARCHITECT, LANDSCAPE ARCHITECT OR LAND SURVEYOR TO ALTER AN ITEM IN ANY WAY. IF AN ITEM BEARING THE STAMP OF A LICENSED PROFESSIONAL IS ALTERED, THE ALTERING ENGINEER, ARCHITECT, LANDSCAPE ARCHITECT OR LAND SURVEYOR SHALL STAMP THE DOCUMENT AND INCLUDE THE NOTATION "ALTERED BY" FOLLOWED BY THEIR SIGNATURE, THE DATE OF SUCH ALTERATION, AND A SPECIFIC DESCRIPTION OF THE ALTERATION.

0	03/22/2023	ISSUED FOR CONSTRUCTION SUBMISSION					JTM	JPR	
No.	DATE	SUBMITTAL / REVISION DESCRIPTION					DB	APP	

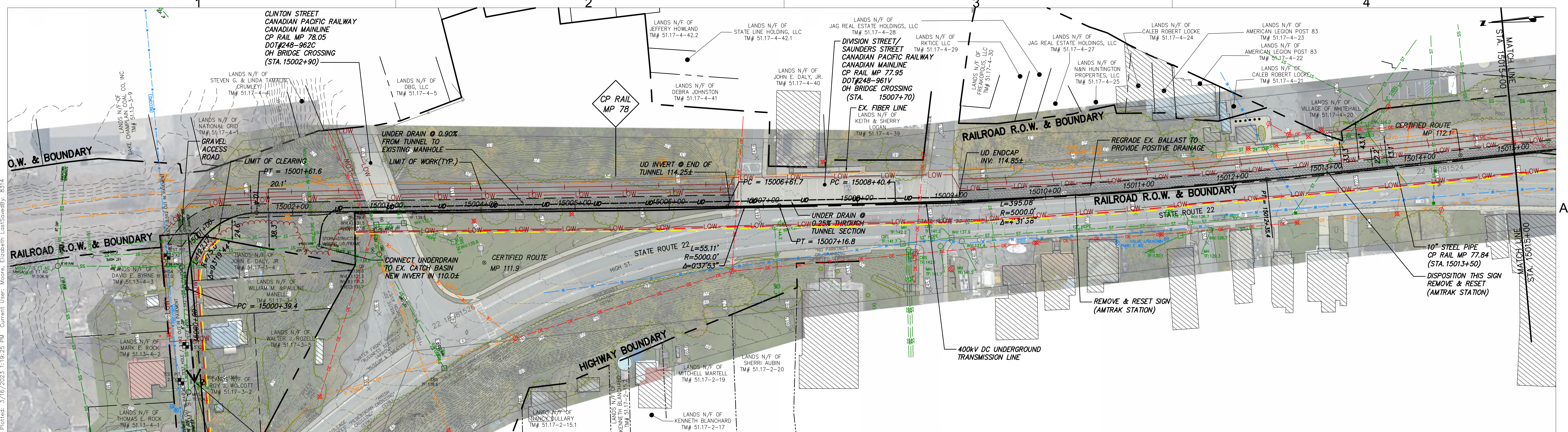
CHAMPLAIN HUDSON POWER EXPRESS  
SEGMENT 3 (PACKAGE 1C ) WHITEHALL TO FORT ANN  
RESTORATION NOTES

KIEWIT PROJECT NO.	21162
CHA PROJECT NO.	066076
DRAWING NO.	G-020
DATE	03/22/2023

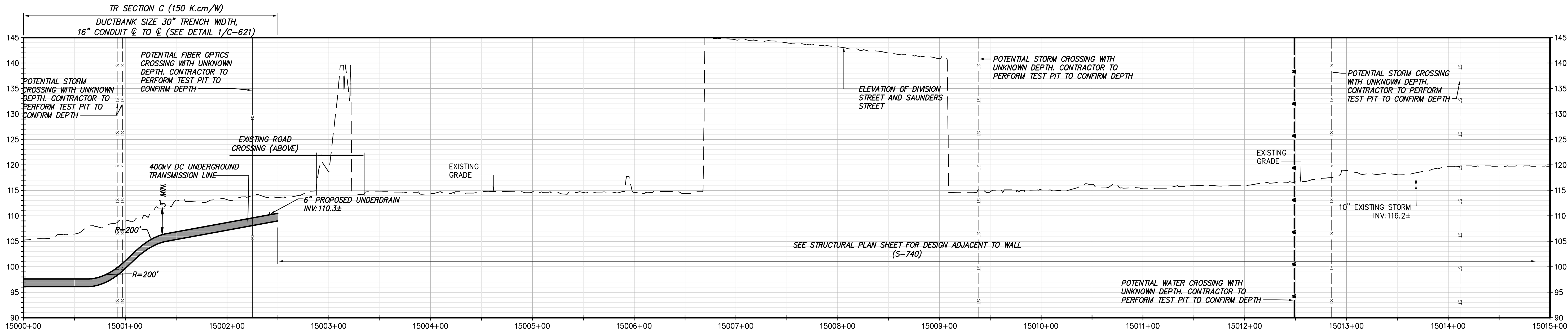
DRAWN BY:	JJE	DESIGNED BY:	JTM	APPROVED BY:	JPR	SCALE	AS NOTED
					REV. NO.	X	



File: V:\PROJECTS\ANY\K6\066076\_00\09\_DESIGN\DRAWINGS\01\_SHEETS\DESIGN PACKAGE 1C\066076\_P1C - C-101 - C-105.DWG Saved: 3/16/2023 8:50:23 AM Plotted: 3/16/2023 1:19:25 PM Current User: Moore, Elizabeth LastSavedBy: 8314



STA. 15000+00 TO STA. 15015+00 PLAN VIEW  
SCALE: 1" = 50'



STA. 15000+00 TO STA. 15015+00 PROFILE VIEW  
SCALE: H: 1" = 50' V: 1"=10'



IT IS A VIOLATION OF LAW FOR ANY PERSON, UNLESS THEY ARE ACTING UNDER THE DIRECTION OF A LICENSED PROFESSIONAL ENGINEER, ARCHITECT, LANDSCAPE ARCHITECT OR LAND SURVEYOR TO ALTER AN ITEM IN ANY WAY. IF AN ITEM BEARING THE STAMP OF A LICENSED PROFESSIONAL IS ALTERED, THE ALTERING ENGINEER, ARCHITECT, LANDSCAPE ARCHITECT OR LAND SURVEYOR SHALL STAMP THE DOCUMENT AND INCLUDE THE NOTATION "ALTERED BY" FOLLOWED BY THEIR SIGNATURE, THE DATE OF SUCH ALTERATION, AND A SPECIFIC DESCRIPTION OF THE ALTERATION.

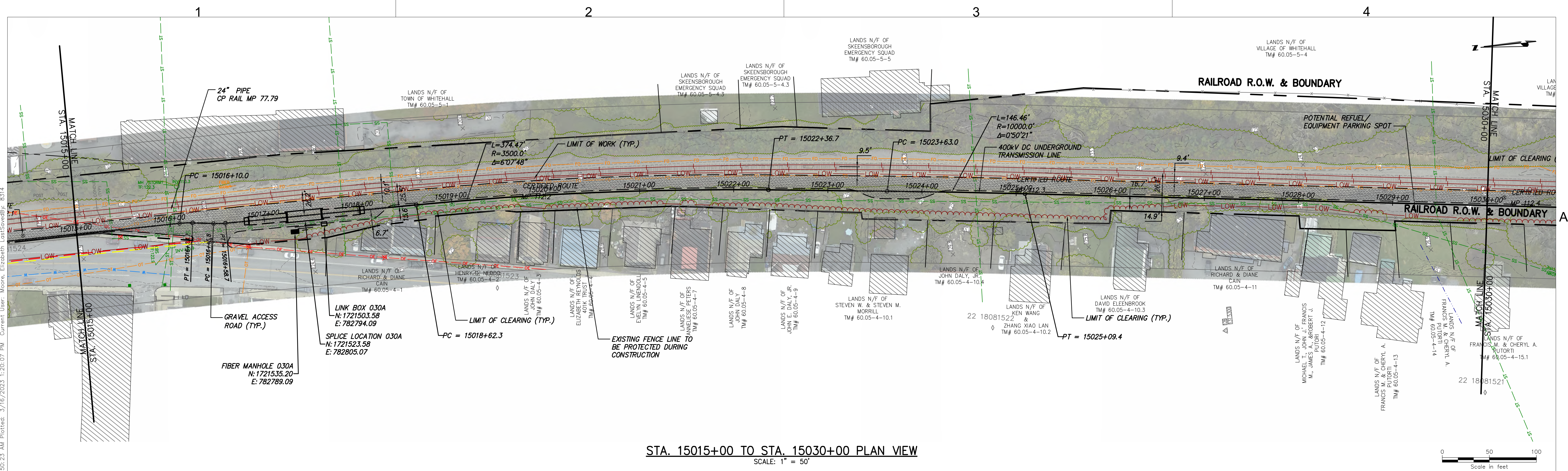
0	03/22/2023	ISSUED FOR CONSTRUCTION SUBMISSION	JTM	JPR
No.	DATE	SUBMITTAL / REVISION DESCRIPTION	DB	APP

CHAMPLAIN HUDSON POWER EXPRESS  
SEGMENT 3 (PACKAGE 1C) WHITEHALL TO FORT ANN  
STA. 15000+00 TO STA 15015+00 PLAN AND PROFILE

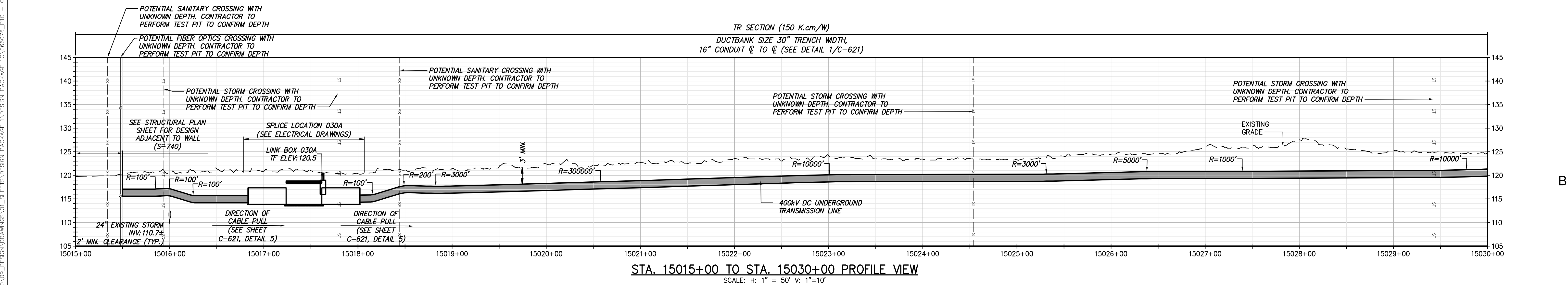
DRAWN BY: JJE DESIGNED BY: JTM APPROVED BY: JPR SCALE: AS NOTED DATE: 03/22/2023

KIEWIT PROJECT NO.	21162
CHA PROJECT NO.	066076
DRAWING NO.	C-101









STA. 15015+00 TO STA. 15030+00 PLAN VIEW  
SCALE: 1" = 50'



STA. 15015+00 TO STA. 15030+00 PROFILE VIEW  
SCALE: H: 1" = 50' V: 1"=10'



IT IS A VIOLATION OF LAW FOR ANY PERSON, UNLESS THEY ARE ACTING UNDER THE DIRECTION OF A LICENSED PROFESSIONAL ENGINEER, ARCHITECT, LANDSCAPE ARCHITECT OR LAND SURVEYOR TO ALTER AN ITEM IN ANY WAY. IF AN ITEM BEARING THE STAMP OF A LICENSED PROFESSIONAL IS ALTERED, THE ALTERING ENGINEER, ARCHITECT, LANDSCAPE ARCHITECT OR LAND SURVEYOR SHALL STAMP THE DOCUMENT AND INCLUDE THE NOTATION "ALTERED BY" FOLLOWED BY THEIR SIGNATURE, THE DATE OF SUCH ALTERATION, AND A SPECIFIC DESCRIPTION OF THE ALTERATION.

No.	DATE	SUBMITTAL / REVISION DESCRIPTION	DB	APP
0	03/22/2023	ISSUED FOR CONSTRUCTION SUBMISSION	JTM	JPR

CHAMPLAIN HUDSON POWER EXPRESS  
SEGMENT 3 ( PACKAGE 1C ) WHITEHALL TO FORT ANN  
STA. 15015+00 TO STA 15030+00 PLAN AND PROFILE

DRAWN BY: JJE

DESIGNED BY: JTM

APPROVED BY: JPR

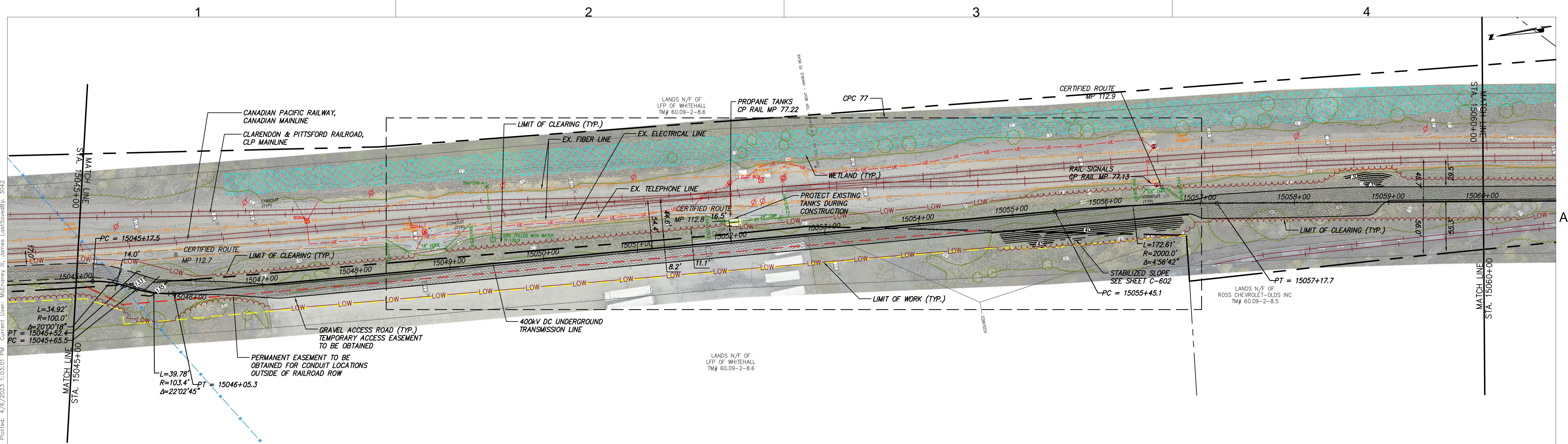
SCALE AS NOTED

DATE 03/22/2023

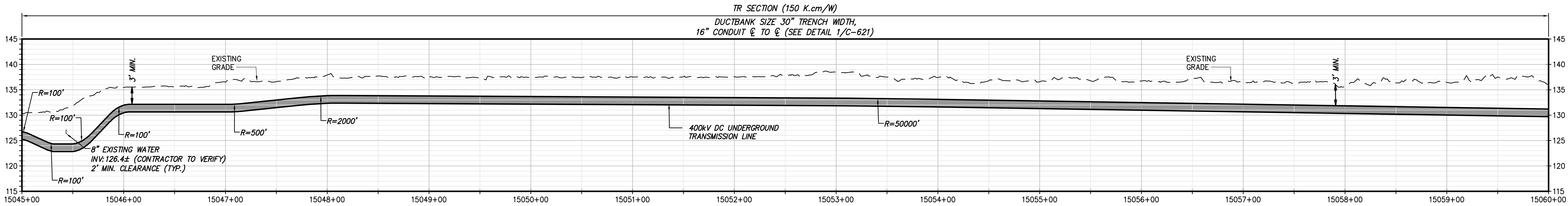










STA. 15045+00 TO STA. 15060+00 PLAN VIEW  
SCALE: 1" = 50'




STA. 15045+00 TO STA. 15060+00 PROFILE VIEW  
SCALE: H: 1" = 50' V: 1" = 10'



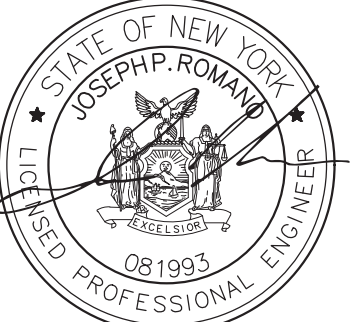
Champlain Hudson  
Power Express



Kiewit



III Winners Circle, PO Box 5269  
Albany, NY 12205-0269  
518.453.4500 • www.chacompanies.com



JOSEPH P. ROMAN  
LICENSED PROFESSIONAL ENGINEER  
081993

IT IS A VIOLATION OF LAW FOR ANY PERSON, UNLESS THEY ARE ACTING UNDER THE DIRECTION OF A LICENSED PROFESSIONAL ENGINEER, ARCHITECT, LANDSCAPE ARCHITECT OR LAND SURVEYOR TO ALTER AN ITEM IN ANY WAY. IF AN ITEM BEARING THE STAMP OF A LICENSED PROFESSIONAL IS ALTERED, THE ALTERING ENGINEER, ARCHITECT, LANDSCAPE ARCHITECT OR LAND SURVEYOR SHALL STAMP THE DOCUMENT AND INCLUDE THE NOTATION "ALTERED BY" FOLLOWED BY THEIR SIGNATURE, THE DATE OF SUCH ALTERATION, AND A SPECIFIC DESCRIPTION OF THE ALTERATION.

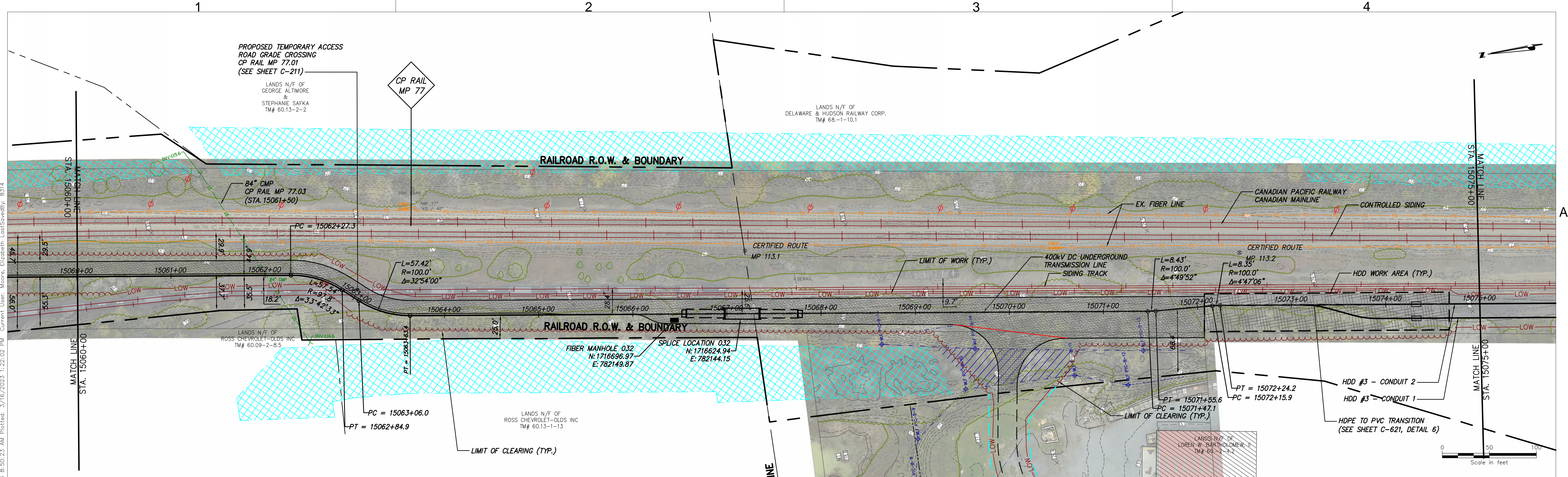
No.	DATE	SUBMITTAL / REVISION DESCRIPTION	DB	APP
1	04/06/2023	REVISED PER DPS COMMENTS	JTM	JPR
0	03/22/2023	ISSUED FOR CONSTRUCTION SUBMISSION	JTM	JPR

**CHAMPLAIN HUDSON POWER EXPRESS  
SEGMENT 3 (PACKAGE 1C) WHITEHALL TO FORT ANN  
STA. 15045+00 TO STA 15060+00 PLAN AND PROFILE**

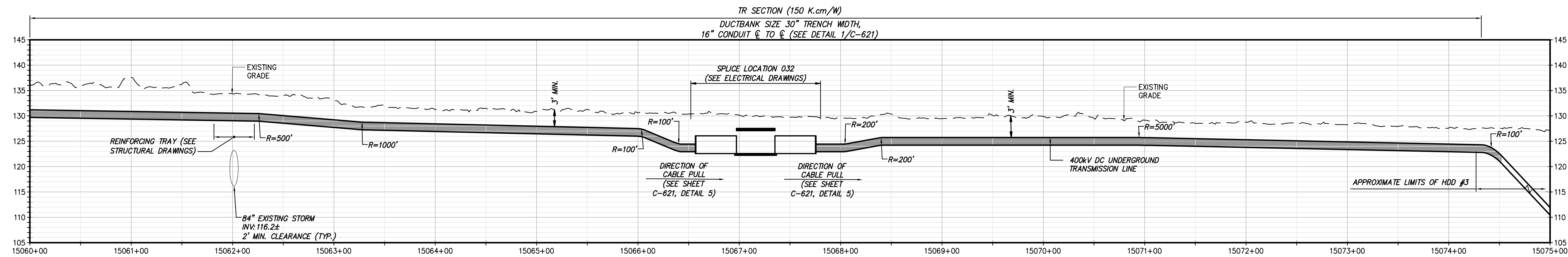
DRAWN BY:	JJE	DESIGNED BY:	JTM	APPROVED BY:	JPR	SCALE:	AS NOTED
						REV. NO.	X

KIEWIT PROJECT NO. 21162  
CHA PROJECT NO. 066076  
DRAWING NO. C-104  
DATE 03/22/2023







STA. 15060+00 TO STA. 15075+00 PLAN VIEW  
SCALE: 1" = 50'




STA. 15060+00 TO STA. 15075+00 PROFILE VIEW  
SCALE: H: 1" = 50' V: 1"=10'




Champlain Hudson  
Power Express



Kiewit



III Winners Circle, PO Box 5269  
Albany, NY 12205-0269  
518.453.4500 • www.chacompanies.com



JOSEPH P. ROMAN  
LICENSED PROFESSIONAL ENGINEER  
081993

IT IS A VIOLATION OF LAW FOR ANY PERSON, UNLESS THEY ARE ACTING UNDER THE DIRECTION OF A LICENSED PROFESSIONAL ENGINEER, ARCHITECT, LANDSCAPE ARCHITECT OR LAND SURVEYOR TO ALTER AN ITEM IN ANY WAY. IF AN ITEM BEARING THE STAMP OF A LICENSED PROFESSIONAL IS ALTERED, THE ALTERING ENGINEER, ARCHITECT, LANDSCAPE ARCHITECT OR LAND SURVEYOR SHALL STAMP THE DOCUMENT AND INCLUDE THE NOTATION "ALTERED BY" FOLLOWED BY THEIR SIGNATURE, THE DATE OF SUCH ALTERATION, AND A SPECIFIC DESCRIPTION OF THE ALTERATION.

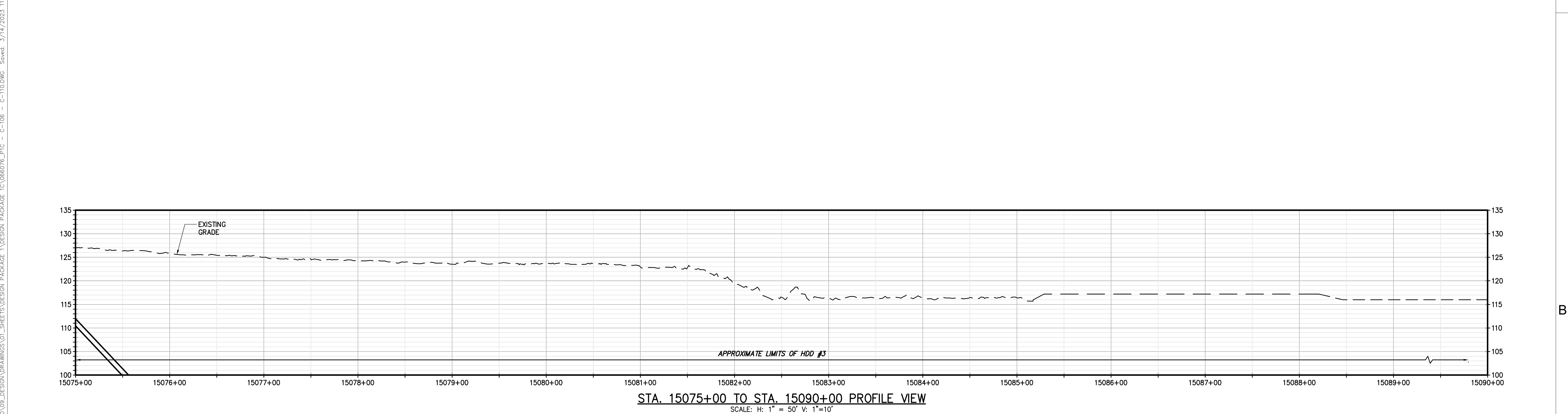
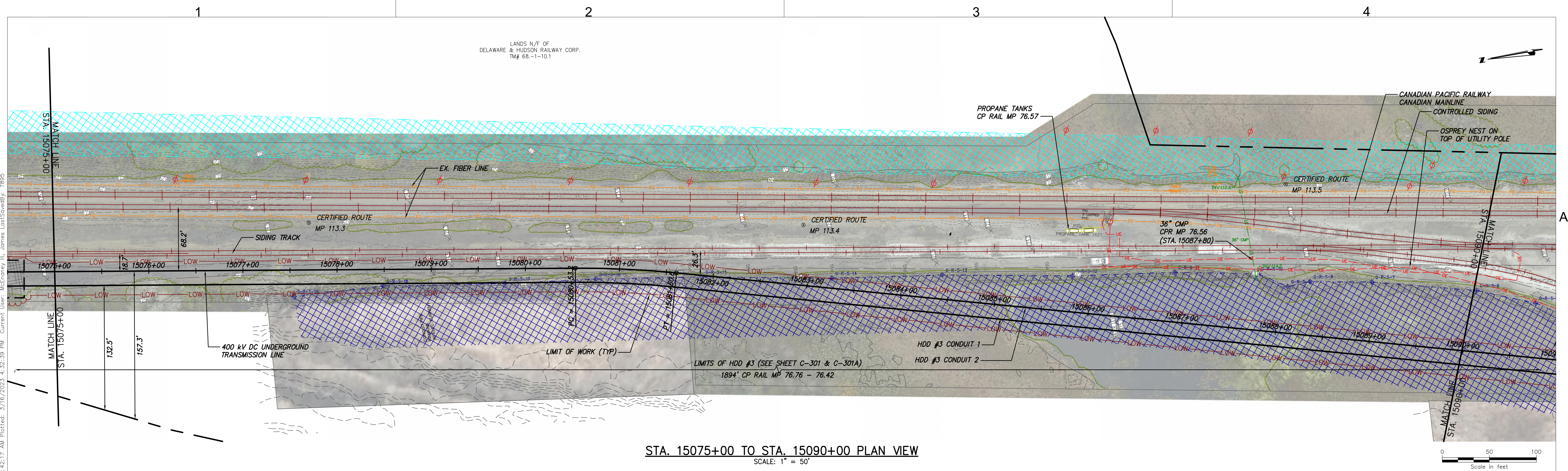
No.	DATE	SUBMITTAL / REVISION DESCRIPTION	DB	APP
0	03/22/2023	ISSUED FOR CONSTRUCTION SUBMISSION	JTM	JPR


CHAMPLAIN HUDSON POWER EXPRESS  
SEGMENT 3 ( PACKAGE 1C ) WHITEHALL TO FORT ANN  
STA. 15060+00 TO STA 15075+00 PLAN AND PROFILE

DRAWN BY:	DESIGNED BY:	APPROVED BY:	SCALE	AS NOTED
JJE	JTM	JPR	REV. NO.	X


KIEWIT PROJECT NO. 21162  
CHA PROJECT NO. 066076  
DRAWING NO. C-105  
DATE 03/22/2023









Champlain Hudson Power Express



Kiewit



III Winners Circle, PO Box 5269  
Albany, NY 12205-0269  
518.453.4500 • www.chacompanies.com



STATE OF NEW YORK  
JOSEPH P. ROMANO  
LICENSED PROFESSIONAL ENGINEER  
081993

IT IS A VIOLATION OF LAW FOR ANY PERSON, UNLESS THEY ARE ACTING UNDER THE DIRECTION OF A LICENSED PROFESSIONAL ENGINEER, ARCHITECT, LANDSCAPE ARCHITECT OR LAND SURVEYOR TO ALTER AN ITEM IN ANY WAY. IF AN ITEM BEARING THE STAMP OF A LICENSED PROFESSIONAL IS ALTERED, THE ALTERING ENGINEER, ARCHITECT, LANDSCAPE ARCHITECT OR LAND SURVEYOR SHALL STAMP THE DOCUMENT AND INCLUDE THE NOTATION "ALTERED BY" FOLLOWED BY THEIR SIGNATURE, THE DATE OF SUCH ALTERATION, AND A SPECIFIC DESCRIPTION OF THE ALTERATION.

No.	DATE	SUBMITTAL / REVISION DESCRIPTION	DB	APP
0	03/22/2023	ISSUED FOR CONSTRUCTION SUBMISSION	JTM	JPR

CHAMPLAIN HUDSON POWER EXPRESS  
SEGMENT 3 ( PACKAGE 1C ) WHITEHALL TO FORT ANN  
STA. 15075+00 TO STA 15090+00 PLAN AND PROFILE

DRAWN BY: JJE DESIGNED BY: JTM APPROVED BY: JPR SCALE AS NOTED  
REV. NO. X

KIEWIT PROJECT NO. 21162  
CHA PROJECT NO. 066076  
DRAWING NO. C-106

DATE 03/22/2023