

NOTICE OF CHANGE TO ENVIRONMENTAL MANAGEMENT AND CONSTRUCTION PLAN FOR CHAMPLAIN HUDSON POWER EXPRESS

Please take notice that on or about June 6, 2024, CHPE LLC and CHPE Properties, Inc. (collectively referred to as “CHPE”) will submit a proposed major change to the approved Environmental Management & Construction Plan (“EM&CP”) for Segment 8 of the Champlain Hudson Power Express (“CHPE”) Project. The Segment 8 and 9 EM&CP was previously approved by the New York State Public Service Commission (“PSC”) on June 22, 2023. Segment 8 includes installation of approximately 16.99 miles of buried overland cable running from the Town of Rotterdam (Schenectady County) through the Town of Bethlehem (Albany County), primarily along railroad rights-of-way. This proposed change involves the extension of a horizontal directional drill (HDD) in the Town of Rotterdam (Schenectady County) on property owned by a private landowner. While the proposed change results in an overall decrease in environmental impacts from construction of the Facility, it requires PSC approval because portions of the CHPE alignment will shift outside of the previously approved Allowed Deviation Zone by approximately 55 feet.

The PSC issued a Certificate of Environmental Compatibility and Public Need (“Certificate”) to CHPE on April 18, 2013 to construct and operate the CHPE Project. Pursuant to that Certificate, CHPE is required to circulate notices to certain landowners, utility owners, municipalities and agencies near the proposed Segment’s construction activities when it proposes to make a change to the Facility route approved in an EM&CP. This notice provides a map showing the proposed change and provides links and contact information which stakeholders can use to obtain further information or to submit comments on the proposed change. The EM&CP change must be reviewed and approved by the PSC before construction on the areas subject to this change can begin.

An overview map showing the proposed EM&CP change accompanies this notice. Further details of the planned work locations will be made available on the Project website at: <https://chpexpress.com/overview-of-public-documents/environmental-management-construction-plan/>. Construction activities for this Segment are ongoing. In general, construction within much of Segment 8 will generally occur during daytime hours Monday through Saturday to minimize impacts, though some select activities may occur at night, on Sundays or state or federal holidays where necessary for safety, continuous operation requirements or for other limited circumstances.

The full Commission docket for the Project can be accessed via the Commission’s website at: <http://documents.dps.ny.gov/public/MatterManagement/CaseMaster.aspx?MatterCaseNo=10-T-0139> and electronic copies of EM&CP change documents are available on the Project website at <https://chpexpress.com/overview-of-public-documents/environmental-management-construction-plan/>. Paper copies of the EM&CP are available for viewing at the following local document repositories: Rotterdam Branch Library, 1100 N. Westcott Rd., Schenectady, NY 12306; Bethlehem Public Library, 451 Delaware Ave., Delmar, NY 12054; Voorheesville Public Library, 51 School Rd., Voorheesville, NY 12186; and Guilderland Public Library, 2228 Western Ave., Guilderland, NY 12084.

Comments related to this proposed EM&CP change should be submitted to the Commission Secretary by email at secretary@dps.ny.gov or by mail to Michelle Phillips, Secretary, NYS Public Service Commission, 3 Empire State Plaza, Albany, NY, 12223, within 21 days of this notice. All comments should reference Case Number 10-T-0139.

CHPE has established a toll-free number for questions regarding the Project: 1-800-991-CHPE (2473). Questions or requests for further information can be directed to: publicoutreach@chpexpress.com or by mail to Molly Hollister, WSP USA, One Pennsylvania Plaza, New York, NY 10119.



623 Fifth Avenue, 20th Floor
New York, New York 10022

Notice of Change to Segment 8 EM&CP **For the Champlain Hudson Power Express Line**

Dear Stakeholder,

On or about May 17, 2024, CHPE LLC and CHPE Properties, Inc. (collectively referred to as “CHPE”) will submit a proposed major change to the approved Environmental Management & Construction Plan (“EM&CP”) for Segment 8 of the Champlain Hudson Power Express (“CHPE”) Project. The Segment 8 and 9 EM&CP was previously approved by the New York State Public Service Commission (“PSC”) on June 22, 2023. Segment 8 includes installation of approximately 16.99 miles of buried overland cable running from the Town of Rotterdam (Schenectady County) through the Town of Bethlehem (Albany County), primarily along railroad rights-of-way. This proposed change involves a route modification in the Town of Rotterdam (Schenectady County) to accommodate future work by National Grid near the New York Thruway (I-90) crossing. While the proposed change does not materially alter the environmental impacts from construction of the Facility at this location, one new excursion area requires PSC approval because portions of the CHPE alignment will shift outside of the previously approved Allowed Deviation Zone by 149 feet.

The PSC issued a Certificate of Environmental Compatibility and Public Need (“Certificate”) to CHPE on April 18, 2013 to construct and operate the CHPE Project. Pursuant to that Certificate, CHPE is required to circulate notices to certain landowners, utility owners, municipalities and agencies near the proposed Segment’s construction activities when it proposes to make a change to the Facility route approved in an EM&CP. This notice provides links and contact information which stakeholders can use to obtain further information or to submit comments on the proposed change. The EM&CP change must be reviewed and approved by the PSC before construction on the areas subject to this change can begin.

An overview map showing the proposed EM&CP change accompanies this notice. Further details of the planned work locations will be made available on the Project website at: <https://chpexpress.com/overview-of-public-documents/environmental-management-construction-plan/>. Construction activities for this Segment are currently under way. Construction within Segments 8 and 9 will generally occur during daytime hours Monday through Saturday to minimize impacts, though some select activities may occur at night, on Sundays or state or federal holidays where necessary for safety, continuous operation requirements or for other limited circumstances.

Contact Information and Document Repositories

CHPE has established a toll-free number for questions regarding the Project: 1-800-991-CHPE (2473). Questions or requests for further information can be directed to publicoutreach@chpexpress.com or by mail to Molly Hollister, WSP USA, One Pennsylvania Plaza, New York, NY 10119.



623 Fifth Avenue, 20th Floor
New York, New York 10022

The EM&CP change documents are available on the PSC's website at <http://documents.dps.ny.gov/public/MatterManagement/CaseMaster.aspx?MatterCaseNo=10-T-0139> and on the Project website <https://chpexpress.com/overview-of-public-documents/environmental-management-construction-plan/>.

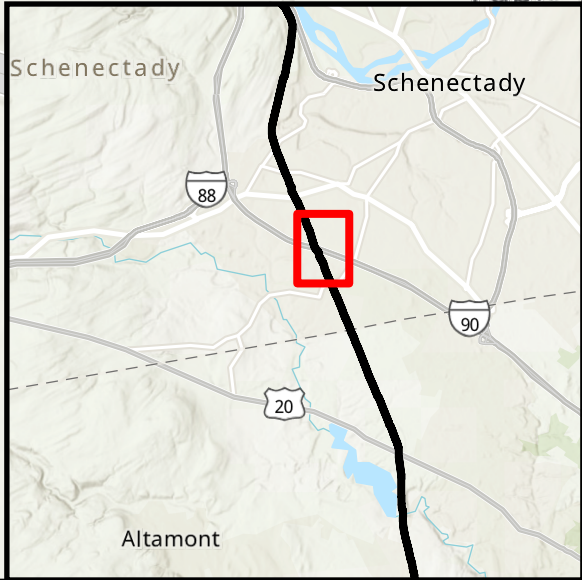
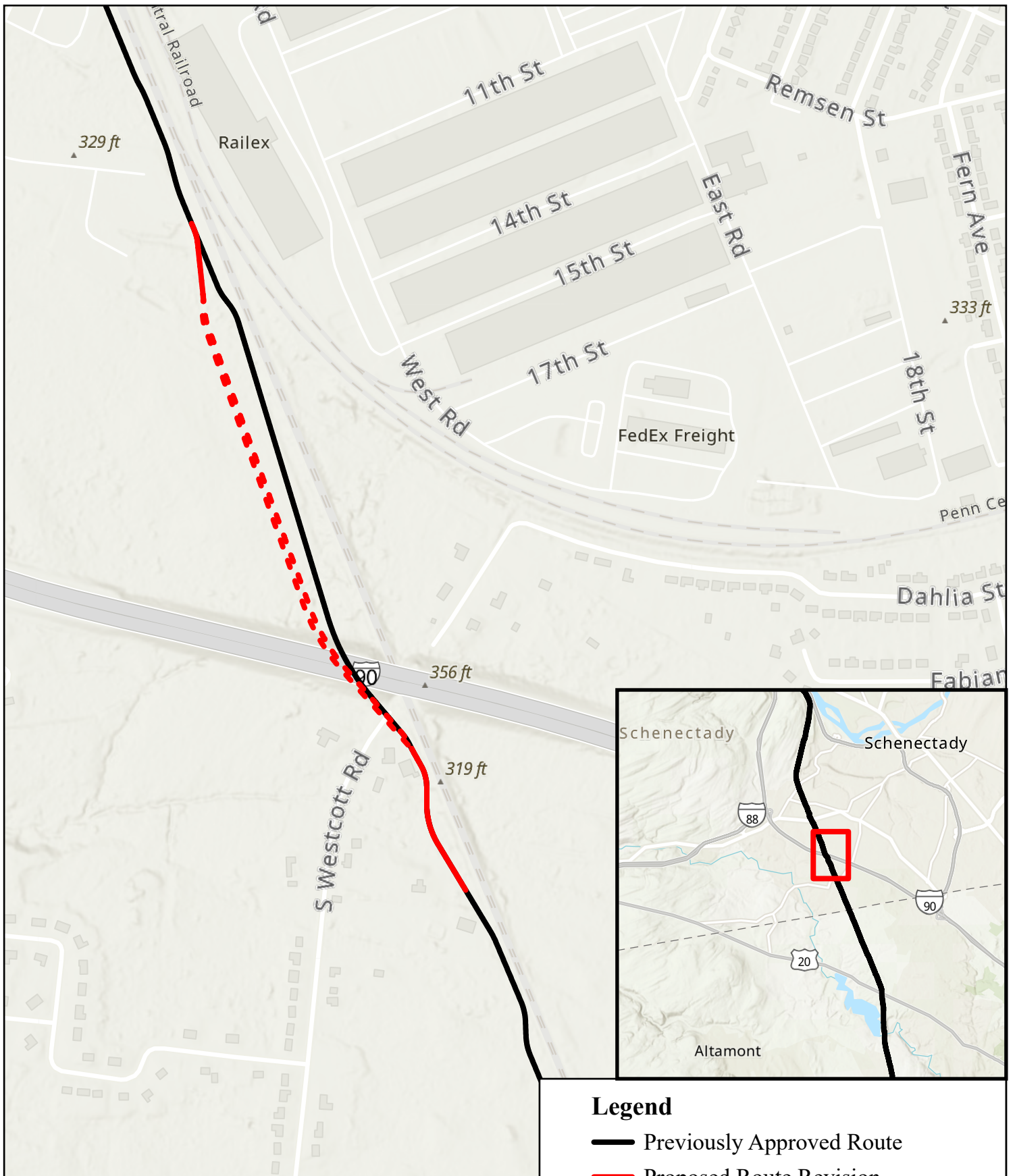
Paper copies of the EM&CP are available for viewing at the following local document repositories: Rotterdam Branch Library, 1100 N. Westcott Road, Schenectady, NY 12306; Bethlehem Public Library, 451 Delaware Avenue, Delmar, NY 12054; Voorheesville Public Library, 51 School Road, Voorheesville, NY 12186; and Guilderland Public Library, 2228 Western Avenue, Guilderland, NY 12084.

Filing Comments

Any person wishing to be heard by the Commission on any matter related to the proposed EM&CP change may file written comments with the Commission Secretary by email at secretary@dps.ny.gov or by mail to Michelle Phillips, Secretary, NYS Public Service Commission, 3 Empire State Plaza, Albany, NY 12223, within 21 days of this notice. All comments should reference Case Number 10-T-0139.

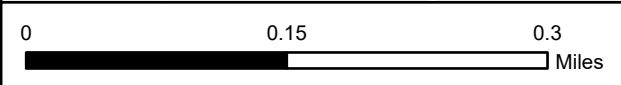
Yours truly,

Josh Bagnato
Vice President, Development



Legend

- Previously Approved Route
- Proposed Route Revision
- Proposed Route Revision (HDD)



**Champlain Hudson Power Express
Change Notice Exhibit**

Service Layer Credits: Esri, NASA, NGA, USGS, Esri, NASA, NGA, USGS, FEMA, Esri Community Maps Contributors, © OpenStreetMap, Microsoft, Esri, TomTom, Garmin, SafeGraph, GeoTechnologies, Inc, METI/NASA, USGS, EPA, NPS, US Census Bureau, USDA, USFWS, Esri, TomTom, Garmin, SafeGraph, METI/NASA, USGS, EPA, NPS, USDA, USFWS