



623 Fifth Avenue, 20th Floor  
New York, New York 10022

## **Notice of Change to Segment 8 EM&CP For the Champlain Hudson Power Express Line**

Dear Stakeholder,

On or about June 6, 2024, CHPE LLC and CHPE Properties, Inc. (collectively referred to as “CHPE”) will submit a proposed major change to the approved Environmental Management & Construction Plan (“EM&CP”) for Segment 8 of the Champlain Hudson Power Express (“CHPE”) Project. The Segment 8 and 9 EM&CP was previously approved by the New York State Public Service Commission (“PSC”) on June 22, 2023. Segment 8 includes installation of approximately 16.99 miles of buried overland cable running from the Town of Rotterdam (Schenectady County) through the Town of Bethlehem (Albany County), primarily along railroad rights-of-way. This proposed change involves the extension of a horizontal directional drill (HDD) in the Town of Rotterdam (Schenectady County) on property owned by a private landowner. While the proposed change results in an overall decrease in environmental impacts from construction of the Facility, it requires PSC approval because portions of the CHPE alignment will shift outside of the previously approved Allowed Deviation Zone by approximately 55 feet.

The PSC issued a Certificate of Environmental Compatibility and Public Need (“Certificate”) to CHPE on April 18, 2013 to construct and operate the CHPE Project. Pursuant to that Certificate, CHPE is required to circulate notices to certain landowners, utility owners, municipalities and agencies near the proposed Segment’s construction activities when it proposes to make a change to the Facility route approved in an EM&CP. This notice provides a map showing the proposed change and provides links and contact information which stakeholders can use to obtain further information or to submit comments on the proposed change. The EM&CP change must be reviewed and approved by the PSC before construction on the areas subject to this change can begin.

An overview map showing the proposed EM&CP change accompanies this notice. Further details of the planned work locations will be made available on the Project website at: <https://chpexpress.com/overview-of-public-documents/environmental-management-construction-plan/>. Construction activities for this Segment are ongoing. In general, construction within much of Segment 8 will generally occur during daytime hours Monday through Saturday to minimize impacts, though some select activities may occur at night, on Sundays or state or federal holidays where necessary for safety, continuous operation requirements or for other limited circumstances.

### **Contact Information and Document Repositories**

CHPE has established a toll-free number for questions regarding the Project: 1-800-991-CHPE (2473). Questions or requests for further information can be directed to [publicoutreach@chpexpress.com](mailto:publicoutreach@chpexpress.com) or by mail to Molly Hollister, WSP USA, One Pennsylvania Plaza, New York, New York 10119.

The EM&CP change documents are available on the PSC’s website at <http://documents.dps.ny.gov/public/MatterManagement/CaseMaster.aspx?MatterCaseNo=10-T->



623 Fifth Avenue, 20th Floor  
New York, New York 10022

0139 and on the Project website <https://chpexpress.com/overview-of-public-documents/environmental-management-construction-plan/>.

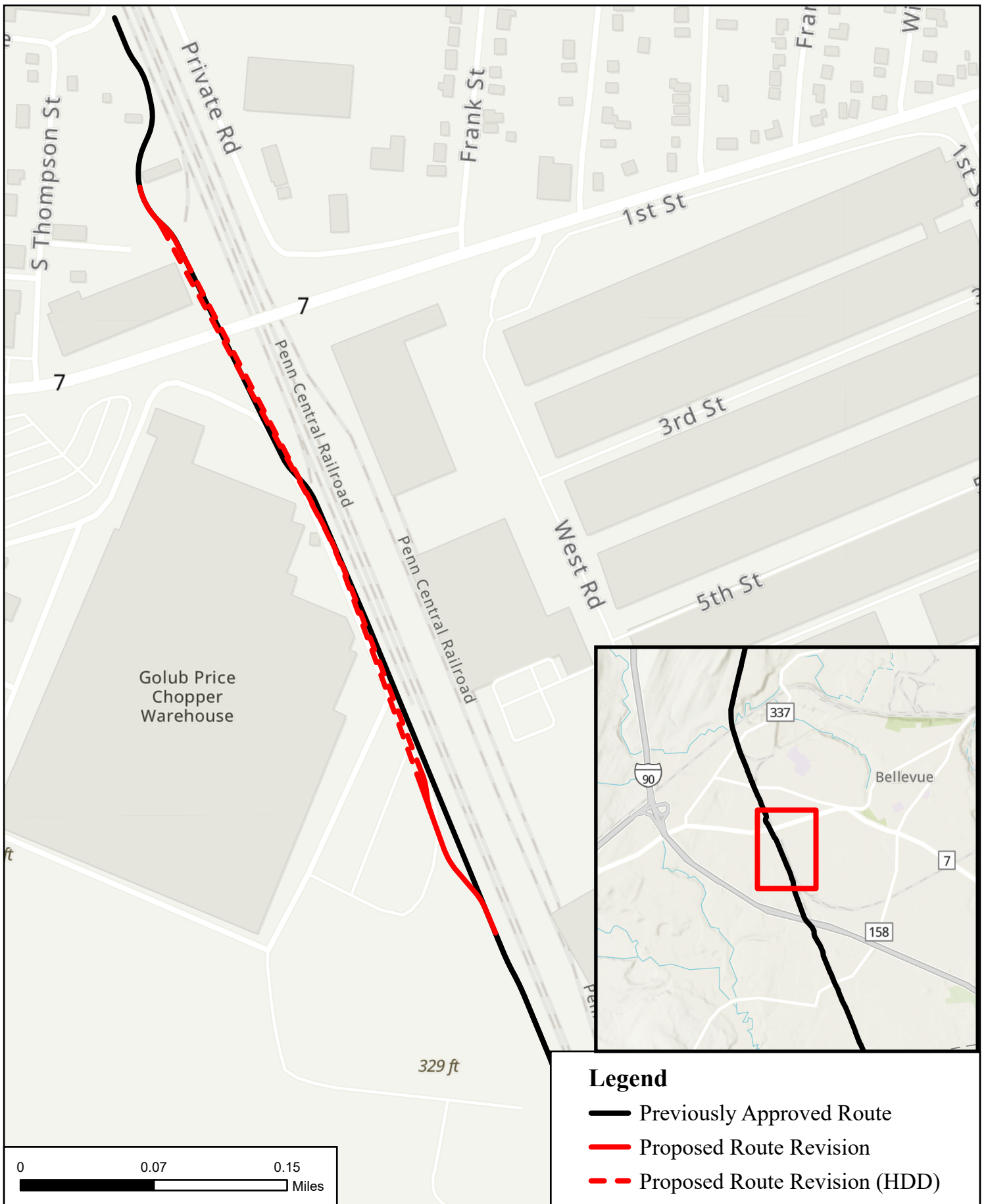
Paper copies of the EM&CP are available for viewing at the following local document repositories: Rotterdam Branch Library, 1100 N. Westcott Rd., Schenectady, NY 12306; Bethlehem Public Library, 451 Delaware Avenue, Delmar, NY 12054; Voorheesville Public Library, 51 School Road, Voorheesville, NY 12186; and Guilderland Public Library, 2228 Western Avenue, Guilderland, NY 12084.

### **Filing Comments**

Any person wishing to be heard by the Commission on any matter related to the proposed EM&CP change may file written comments with the Commission Secretary by email at [secretary@dps.ny.gov](mailto:secretary@dps.ny.gov) or by mail to Michelle Phillips, Secretary, NYS Public Service Commission, 3 Empire State Plaza, Albany, NY 12223, within 21 days of this notice. All comments should reference Case Number 10-T-0139.

Yours truly,

Josh Bagnato  
Vice President, Development



**Legend**

- Previously Approved Route
- Proposed Route Revision
- Proposed Route Revision (HDD)



**Champlain Hudson Power Express  
Change Notice Exhibit**

Service Layer Credits: Esri, NASA, NGA, USGS, FEMA, Esri Community Maps Contributors, © OpenStreetMap, Microsoft, Esri, TomTom, Garmin, SafeGraph, GeoTechnologies, Inc, METI/NASA, USGS, EPA, NPS, US Census Bureau, USDA, USFWS, Esri, TomTom, Garmin, SafeGraph, GeoTechnologies, Inc, METI/ NASA, USGS, EPA, NPS, USDA, USFWS

## **NOTICE OF CHANGE TO ENVIRONMENTAL MANAGEMENT AND CONSTRUCTION PLAN FOR CHAMPLAIN HUDSON POWER EXPRESS**

Please take notice that or about June 6, 2024, CHPE LLC and CHPE Properties, Inc. (collectively referred to as “CHPE”) will submit a proposed major change to the approved Environmental Management & Construction Plan (“EM&CP”) for Segment 8 of the Champlain Hudson Power Express (“CHPE”) Project. The Segment 8 and 9 EM&CP was previously approved by the New York State Public Service Commission (“PSC”) on June 22, 2023. Segment 8 includes installation of approximately 16.99 miles of buried overland cable running from the Town of Rotterdam (Schenectady County) through the Town of Bethlehem (Albany County), primarily along railroad rights-of-way. This proposed change involves the extension of a horizontal directional drill (HDD) in the Town of Rotterdam (Schenectady County) on property owned by a private landowner. While the proposed change results in an overall decrease in environmental impacts from construction of the Facility, it requires PSC approval because portions of the CHPE alignment will shift outside of the previously approved Allowed Deviation Zone by approximately 55 feet.

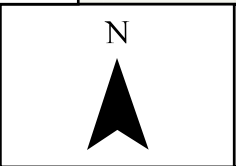
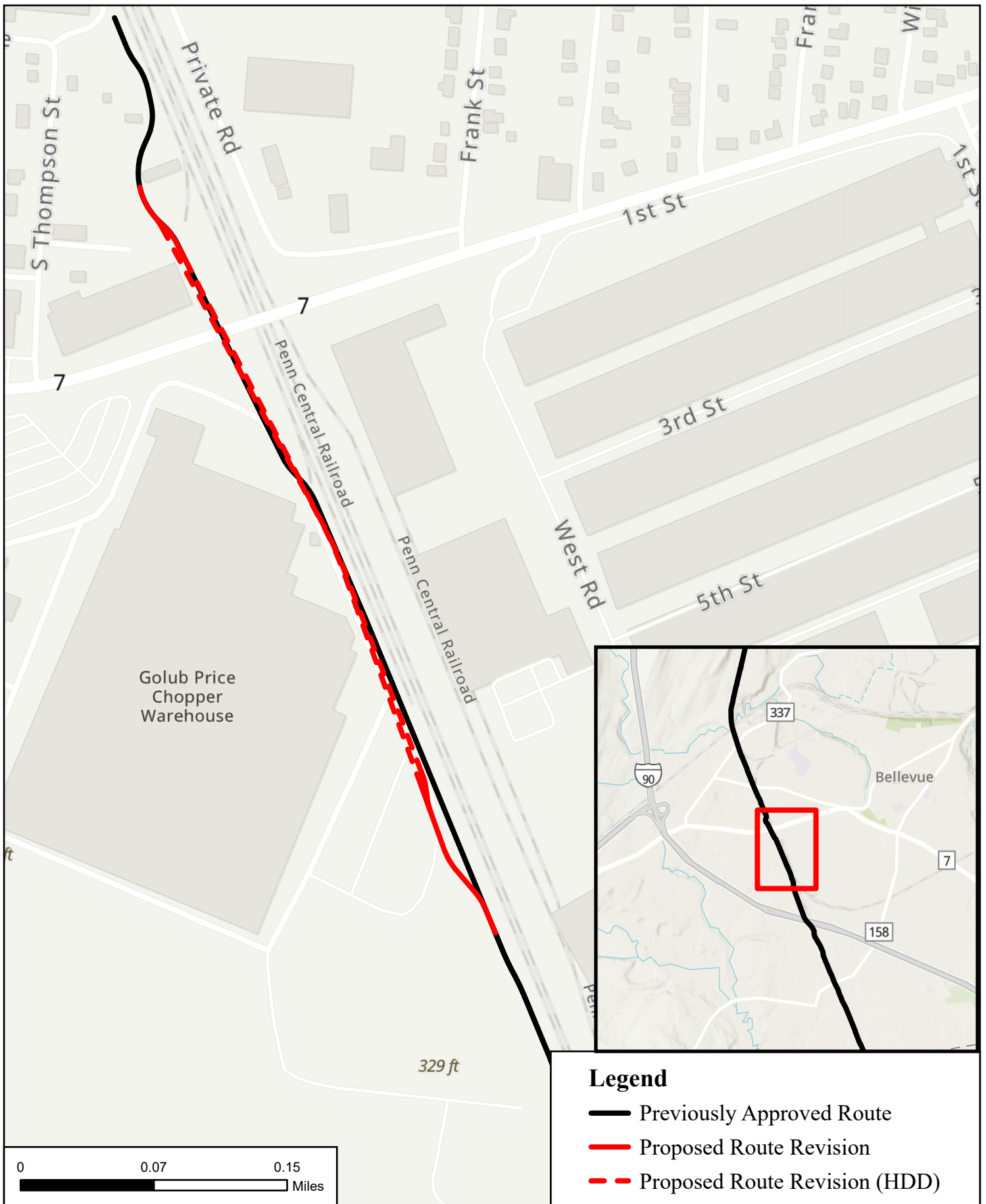
The PSC issued a Certificate of Environmental Compatibility and Public Need (“Certificate”) to CHPE on April 18, 2013 to construct and operate the CHPE Project. Pursuant to that Certificate, CHPE is required to circulate notices to certain landowners, utility owners, municipalities and agencies near the proposed Segment’s construction activities when it proposes to make a change to the Facility route approved in an EM&CP. This notice provides maps showing the proposed change and provides links and contact information which stakeholders can use to obtain further information or to submit comments on the proposed change. The EM&CP change must be reviewed and approved by the PSC before construction on the areas subject to this change can begin.

Overview maps showing the proposed EM&CP change accompany this notice. Further details of the planned work locations will be made available on the Project website at: <https://chpexpress.com/overview-of-public-documents/environmental-management-construction-plan/>. Construction activities for this Segment are ongoing. In general, construction within much of Segment 8 will generally occur during daytime hours Monday through Saturday to minimize impacts, though some select activities may occur at night, on Sundays or state or federal holidays where necessary for safety, continuous operation requirements or for other limited circumstances.

The full Commission docket for the Project can be accessed via the Commission’s website at: <http://documents.dps.ny.gov/public/MatterManagement/CaseMaster.aspx?MatterCaseNo=10-T-0139> and electronic copies of EM&CP change documents are available on the Project website at <https://chpexpress.com/overview-of-public-documents/environmental-management-construction-plan/>. Paper copies of the EM&CP are available for viewing at the following local document repositories: Rotterdam Branch Library, 1100 N. Westcott Rd., Schenectady, NY 12306; Bethlehem Public Library, 451 Delaware Avenue, Delmar, NY 12054; Voorheesville Public Library, 51 School Road, Voorheesville, NY 12186; and Guilderland Public Library, 2228 Western Avenue, Guilderland, NY 12084.

Comments related to this proposed EM&CP change should be submitted to the Commission Secretary by email at [secretary@dps.ny.gov](mailto:secretary@dps.ny.gov) or by mail to Michelle Phillips, Secretary, NYS Public Service Commission, 3 Empire State Plaza, Albany, NY, 12223, within 21 days of this notice. All comments should reference Case Number 10-T-0139.

CHPE has established a toll-free number for questions regarding the Project: 1-800-991-CHPE (2473). Questions or requests for further information can be directed to: [publicoutreach@chpexpress.com](mailto:publicoutreach@chpexpress.com) or by mail to Molly Hollister, WSP USA, One Pennsylvania Plaza, New York, New York 10119.



**Champlain Hudson Power Express**  
Change Notice Exhibit

Service Layer Credits: Esri, NASA, NGA, USGS, FEMA, Esri Community Maps Contributors, © OpenStreetMap, Microsoft, Esri, TomTom, Garmin, SafeGraph, GeoTechnologies, Inc, METI/NASA, USGS, EPA, NPS, US Census Bureau, USDA, USFWS, Esri, TomTom, Garmin, SafeGraph, GeoTechnologies, Inc, METI/ NASA, USGS, EPA, NPS, USDA, USFWS