

# GENERAL NOTES

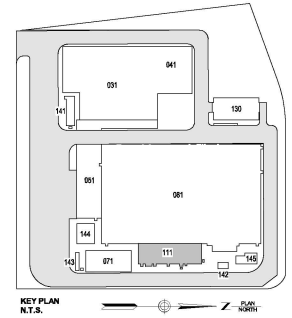
1. REFER TO SHEET E-001.00 FOR GENERAL NOTES.
2. REFER TO SHEET E-001.00 FOR CABLE/CONDUIT SCHEDULE.
3. ALL INTERIOR CIRCUITS SHALL BE 2012-#120 IN 3/4" EMT UNLESS EXPOSED TO DAMAGE OR NOTED OTHERWISE.
4. ALL EXTERIOR CIRCUITS SHALL BE 2012-#120 IN RMC UNLESS NOTED OTHERWISE.

# ELECTRICAL KEYNOTES

1. INSTALL RECEPTACLE TO PROVIDE POWER TO COFFEE MAKER, 120V, 1-PHASE 3-WIRE WITH GROUND.
2. PROVIDE RECEPTACLE FOR MICROWAVE. MOUNT IN CABINET DIRECTLY ABOVE MICROWAVE MOUNTING SPACE. COORDINATE LOCATION WITH CASEWORK VENDOR.
3. PROVIDE GFCI RECEPTACLE FOR REFRIGERATOR POWER CONNECTION.
4. PROVIDE PANELBOARD PNL-111-X3.N2.1.480/277V, 3 PH, 4W, NEMA 1 ENCLOSURE.
5. PROVIDE LIGHTING CONTROL PANEL WITH NEMA 1 ENCLOSURE.
6. PROVIDE MINI-POWER CENTER, TLO-111-X3.N2.3.1, 280VA, 480-240/240V, 1 PH, 3W, NEMA 1 ENCLOSURE.
7. POWER FOR HITACHI OPERATOR SYSTEM IS HARDWIRED TO CONNECT DIRECTLY TO HITACHI PANELS.
8. PROVIDE SWITCHGEAR SWBD-111-X3.N2.480/277V, 3 PH, 4W, NEMA 1 ENCLOSURE.
9. PROVIDE AUTOMATIC TRANSFER SWITCH ATS-111-X3.N2.800A, 3 PH, 4W, NEMA 1 ENCLOSURE.
10. PROVIDE MINI-POWER CENTER, TLO-EMG-111-X3.N2.1.1, 190VA, 480-120/240V, 1 PH, 3W, NEMA 1 ENCLOSURE.
11. PROVIDE TRANSFORMER XFMR-111-X3.N2.1.3, 80.00VA, 480-240/240V, 1 PH, 3W.
12. PROVIDE TRANSFORMER XFMR-111-X3.N2.1.1, 112.00VA, 480-208V/120V, 3 PH, 4W.
13. PROVIDE PANELBOARD PNL-111-X3.N2.1.1, 120/208V, 3 PH, 4W, NEMA 1 ENCLOSURE.

ELECTRICAL EQUIPMENT SCHEDULE		
DESIGNATION	ITEM DESIGNATION	DESCRIPTION
C1	S2.A3.A1.K1	POLE CONTROL PROTECTION CABINET 1A
C2	S2.A3.A5.K7	OPTICAL DISTRIBUTION FRAME CABINET 1A
C3	S2.A3.A4.K1	AUXILIARY CONTROL CABINET 1A
C4	S2.A3.A1.K2	POLE CONTROL PROTECTION CABINET 1B
C5	S2.A3.A5.K8	OPTICAL DISTRIBUTION FRAME CABINET 1B
C6	S2.A3.A4.K2	AUXILIARY CONTROL CABINET 1A
C7	S2.X1.N3.U5	DC DISTRIBUTION C
C8	S2.A3.A3.K3	VALVE CONTROL NEGATIVE 11A
C9	S2.A3.A3.K1	VALVE CONTROL POSITIVE 11A
C10	S2.A3.A2.K3	VALVE MEASUREMENT INTERFACE 11A
C11	S2.A3.A3.K4	VALVE CONTROL NEGATIVE 11B
C12	S2.A3.A3.K2	VALVE CONTROL POSITIVE 11B
C13	S2.A3.A2.K4	VALVE MEASUREMENT INTERFACE 11B
C14	S2.AK1.K1	STATION CONTROL MONITORING 1
C15	S2.AK1.K3	STATION CONTROL MONITORING 3
C16	S2.A3.A2.K7	DC SWITCHYARD INTERFACE 12A
C17	S2.A3.A2.K5	DC SWITCHYARD INTERFACE 11A
C18	S2.AK1.K2	STATION CONTROL MONITORING 2
C19	S2.AK1.K4	STATION CONTROL MONITORING 4
C20	S2.A3.A2.K8	DC SWITCHYARD INTERFACE 12B
C21	S2.A3.A2.K6	DC SWITCHYARD INTERFACE 11B
C22	S2.A2.PH1	PRINTER
C23	S2.A3.A7.A2	KEY INTERLOCKING NEGATIVE VALVE HALL
C24	S2.A3.A7.A1	KEY INTERLOCKING POSITIVE VALVE HALL
C25	TBD	WATER TREATMENT UNIT
C26	S2.X1.W1.W1	EARTH CONTROL VALVE
C27	S2.A3.A5.K1	VALVE COOLING INTERFACE 11A
C28	S2.A3.A5.K2	VALVE COOLING INTERFACE 11B
C29	S2.X1.E1.R1	UNINTERRUPTIBLE MOTOR DRIVE
C30	S2.X1.E1.N1	MOTOR CONTROL CENTER (VALVE COOLING)
C31	S2.X1.E1.R1-CC1	MOTOR INTERRUPTIBLE MOTOR DRIVE BATTERY
C32	S2.X1.N3-CC2	BATTERY BANK B
C33	S2.A3.A5.K4	AXI 11B
C34	S1.X1.N2.UC1	AC DISTRIBUTION B
C35	S2.X1.N3.UC4	DC DISTRIBUTION B
C36	S2.X1.N3.UC2-WD1	DC MAIN DISTRIBUTION B
C37	S2.X1.N3.UC2-XD1	DC FUSE BOX B
C38	S2.X1.N3.UC2-XD1	AUTOMATIC TRANSFER SWITCH B
C39	S2.X1.N3.UC2-TB1	DUAL BATTERY CHARGER B
C40	S2.X1.N1	LOW VOLTAGE SWITCHGEAR
C41	S2.X1.N1.T2.TA1	TRANSFORMER A
C42	S2.X1.N1.T1.TA1	TRANSFORMER A
C43	S2.A3.A5.K3	AXI 11A
C44	S1.X1.N1.UC	AC DISTRIBUTION A
C45	S2.X1.N3.UC3	DC DISTRIBUTION A
C46	S2.X1.N3.UC1-WD1	DC MAIN DISTRIBUTION A
C47	S2.X1.N3.UC1-XD1	DC FUSE BOX A
C48	S2.X1.N3.UC1-XD1	AUTOMATIC TRANSFER SWITCH A
C49	S2.X1.N3.UC1-TB1	DUAL BATTERY CHARGER A
C50	S2.X1.N3-CC1	BATTERY BANK A
C51	S2.P1.W1.N3.XD5	DC HALL JB DC DISTRIBUTION (-)
C52	S2.P1.W1.N3.XD5	DC HALL JB DC DISTRIBUTION (+)
C53	S2.P1.W1.N1.XD3	DC HALL JB AC DISTRIBUTION
C54	S2.A3.A2.K22	CABLE FAULT LOCATOR JB
C55	S2.A3.A2.K21	CABLE FAULT LOCATOR JB
C56	S2.A3.A6.A1	FAST STOP
C57	S2.X1.E1.R1-UC1	VALVE COOLING SYSTEM PUMP UNIT
C58	N/A	SERVICE PLATFORM
C59	S2.A2.K4	ENGINEERING WORK STATION
C60	S2.A2.K5	AVS
C61	S2.A2.K1	REMOTE OPERATOR WORK STATION
C62	S2.A2.K2	OPERATOR WORK STATION 1
C63	S2.A2.K3	OPERATOR WORK STATION 2

# ISSUED FOR PERMIT



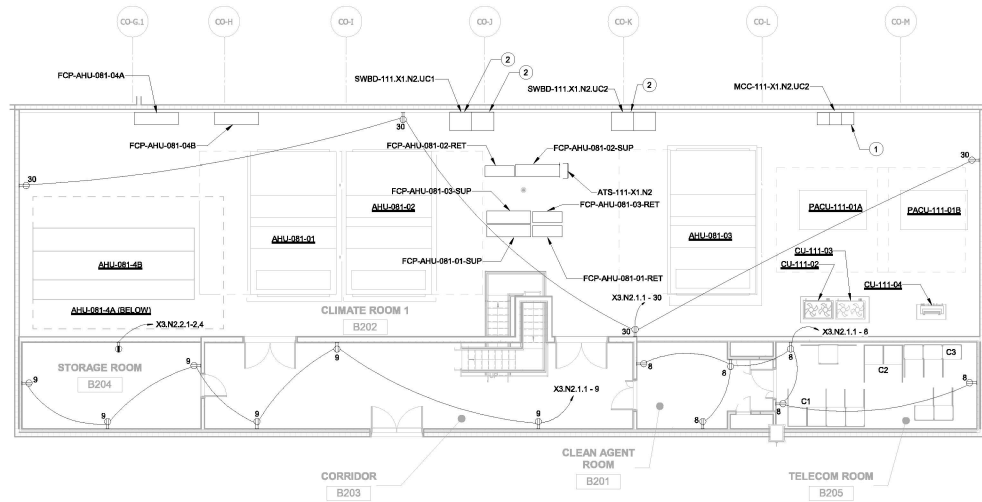
**GENERAL NOTES:**

1. REFER TO SHEET E-001.00 FOR GENERAL NOTES.
2. REFER TO SHEET E-002.00 FOR CABLE/CONDUIT SCHEDULE.
3. ALL INTERIOR CIRCUITS SHALL BE SP12-#12G IN 3/4" EMT UNLESS EXPOSED TO DAMAGE OR NOTED OTHERWISE.
4. ALL EXTERIOR CIRCUITS SHALL BE 2#12-#12G IN RMC UNLESS NOTED OTHERWISE.

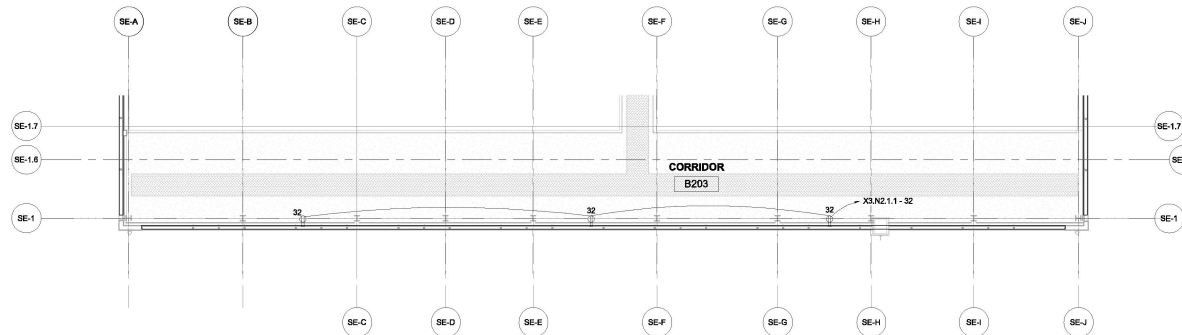
**ELECTRICAL KEYNOTES:**

1. PROVIDE MOTOR CONTROL CENTER (MCC), 800VAC, 200A, NEMA 1 ENCLOSURE.
2. PROVIDE SWITCHBOARD SWBD-111-X1-N2, 480/277V, 1600A, 3 PH, 4W, NEMA 1 ENCLOSURE.

DESIGNATION	ITEM DESIGNATION	DESCRIPTION
C1	S2.A3.A5.K6	CLIMATE SYSTEM INTERFACE 11B
C2	S2.A3.A5.K5	CLIMATE SYSTEM INTERFACE 11A
C3	N/A	RTU PANEL



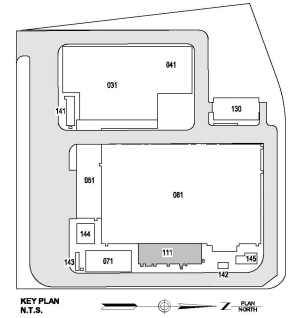
1 POWER PLAN SERVICE BUILDING LEVEL 2  
E-124.00  
1/8" = 1'-0"



2 POWER PLAN LEVEL 2 - EQUIPMENT PLATFORM  
E-124.00  
1/8" = 1'-0"

WARNING - IT IS A VIOLATION, OF THE NEW YORK STATE EDUCATION LAW, SECTION 7209.2 FOR ANY PERSON, UNLESS SHE OR HE IS ACTING UNDER THE DIRECTION OF A LICENSED PROFESSIONAL ENGINEER OR REGISTERED ARCHITECT, TO ALTER THIS DOCUMENT IN ANY WAY. IF ALTERED, THE ALTERING PERSON SHALL COMPLY WITH THE REQUIREMENTS OF NEW YORK EDUCATION LAW, SECTION 7209.2.

ISSUED FOR PERMIT



Engineering and  
Land Surveying, P.C.

370 7th Avenue  
Suite 1804  
New York, NY 10001

SOWINSKI  
SULLIVAN

25 Mechanic Avenue  
Sparta, NJ 07871

CONFIDENTIAL

B	100% SUBMISSION	XLIU	D.DUDAN	12/13/2022
A	INTERIM SUBMISSION	N.WU	D.DUDAN	08/13/2022
REV	DESCRIPTION	DRW BY	CHK BY	DATE

**Kiewit**  
470 Chestnut Ridge Rd # 2,  
Woodcliff Lake, NJ 07877

**Hitachi Energy**  
901 Main Campus Drive  
Raleigh, North Carolina 27606

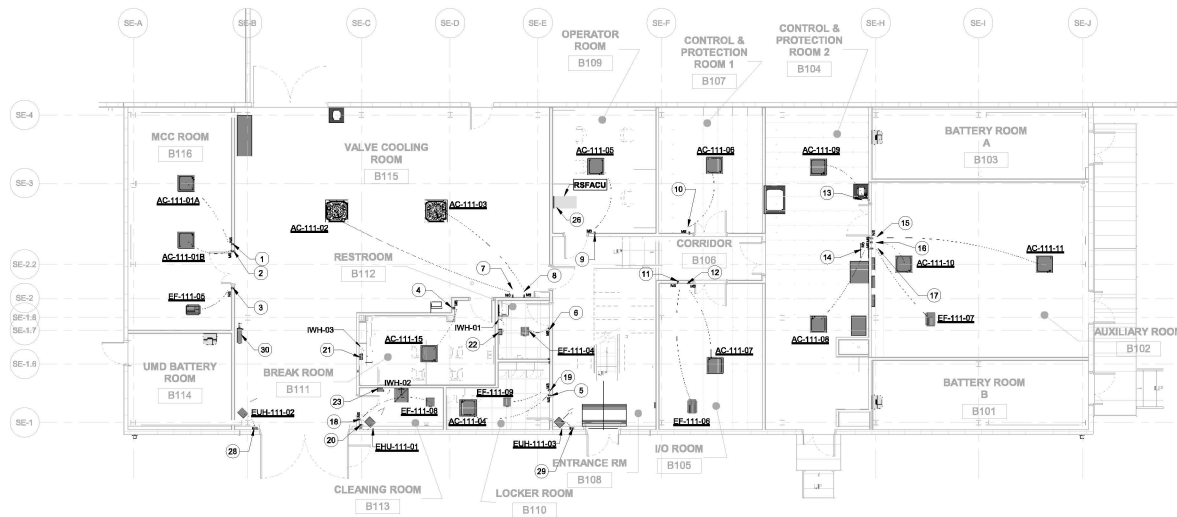
PROJECT  
**CHPE**  
Champlain Hudson  
PowerExpress  
**Astoria HVDC  
Converter Station**  
31-45 20th Avenue, Astoria, Queens NY 11105  
Block #650 - Lot #310 - BIN #4624437

SERVICE BUILDING 2ND  
FLOOR POWER PLAN

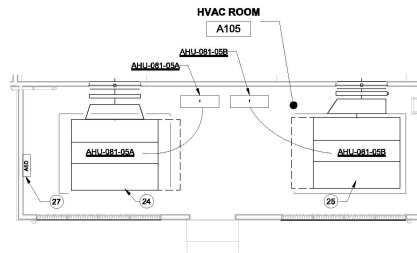
STATE OF NEW YORK  
Professional Engineer  
No. 100110000  
Exp. 12/31/2022

DATE: 12/13/2022  
INQUIRY NO: 100121  
DRAWING BY: XLIU  
CHECKED BY: D.DUDAN  
DRAWING NO:  
CADD FILE NO:  
AutoCAD 2015 LISP 6014

E-124.00



1 HVAC POWER PLAN SERVICE BUILDING LEVEL 1  
E-125.00 1/8" = 1'-0"



2 HVAC ROOM FOR DC A105 HVAC POWER  
E-125.00 1/8" = 1'-0"

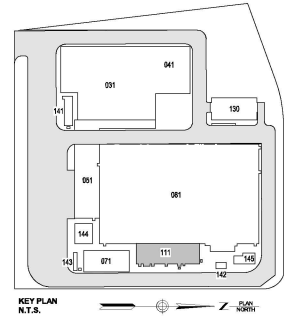
#### GENERAL NOTES:

1. REFER TO SHEET E-001.00 FOR GENERAL NOTES.
2. REFER TO SHEET E-002.00 FOR CABLE/CONDUIT SCHEDULE.
3. REFER TO MECHANICAL PACKAGE FOR HVAC DEVICES DETAILS INCLUDING ELECTRICAL LOAD CHARACTERISTICS.

#### ELECTRICAL NOTES:

1. PROVIDE MOTOR RATED DISCONNECT SWITCH MS-AC-111-01A, CONNECT TO CIRCUIT PNL-111-XJN2.1.1-15.17 WITH CABLE NUMBER CA-K1-M-111-100.
2. PROVIDE MOTOR RATED DISCONNECT SWITCH MS-AC-111-01B, CONNECT TO CIRCUIT PNL-111-XJN2.1.1-15.17 WITH CABLE NUMBER CA-K1-M-111-100.
3. PROVIDE MOTOR RATED DISCONNECT SWITCH MS-EF-111-08, CONNECT TO CIRCUIT PNL-111-XJN2.1.1-15.17 WITH CABLE NUMBER CA-K1-M-111-100.
4. PROVIDE MOTOR RATED DISCONNECT SWITCH MS-AC-111-04, CONNECT TO CIRCUIT PNL-111-XJN2.1.1-15.17 WITH CABLE NUMBER CA-K1-M-111-100.
5. PROVIDE MOTOR RATED DISCONNECT SWITCH MS-AC-111-04, CONNECT TO CIRCUIT PNL-111-XJN2.1.1-15.17 WITH CABLE NUMBER CA-K1-M-111-100.
6. PROVIDE MOTOR RATED DISCONNECT SWITCH MS-EF-111-04, CONNECT TO CIRCUIT PNL-111-XJN2.1.1-15.17 WITH CABLE NUMBER CA-K1-M-111-100.
7. PROVIDE MOTOR RATED DISCONNECT SWITCH MS-AC-111-02, CONNECT TO CIRCUIT PNL-111-XJN2.1.1-15.17 WITH CABLE NUMBER CA-K1-M-111-100.
8. PROVIDE MOTOR RATED DISCONNECT SWITCH MS-AC-111-02, CONNECT TO CIRCUIT PNL-111-XJN2.1.1-15.17 WITH CABLE NUMBER CA-K1-M-111-100.
9. PROVIDE MOTOR RATED DISCONNECT SWITCH MS-AC-111-02, CONNECT TO CIRCUIT PNL-111-XJN2.1.1-15.17 WITH CABLE NUMBER CA-K1-M-111-100.
10. PROVIDE MOTOR RATED DISCONNECT SWITCH MS-AC-111-02, CONNECT TO CIRCUIT PNL-111-XJN2.1.1-15.17 WITH CABLE NUMBER CA-K1-M-111-100.
11. PROVIDE MOTOR RATED DISCONNECT SWITCH MS-EF-111-02, CONNECT TO CIRCUIT PNL-111-XJN2.1.1-15.17 WITH CABLE NUMBER CA-K1-M-111-100.
12. PROVIDE MOTOR RATED DISCONNECT SWITCH MS-AC-111-02, CONNECT TO CIRCUIT PNL-111-XJN2.1.1-15.17 WITH CABLE NUMBER CA-K1-M-111-100.
13. PROVIDE MOTOR RATED DISCONNECT SWITCH MS-AC-111-02, CONNECT TO CIRCUIT PNL-111-XJN2.1.1-15.17 WITH CABLE NUMBER CA-K1-M-111-100.
14. PROVIDE MOTOR RATED DISCONNECT SWITCH MS-AC-111-02, CONNECT TO CIRCUIT PNL-111-XJN2.1.1-15.17 WITH CABLE NUMBER CA-K1-M-111-100.
15. PROVIDE MOTOR RATED DISCONNECT SWITCH MS-AC-111-02, CONNECT TO CIRCUIT PNL-111-XJN2.1.1-15.17 WITH CABLE NUMBER CA-K1-M-111-100.
16. PROVIDE MOTOR RATED DISCONNECT SWITCH MS-AC-111-02, CONNECT TO CIRCUIT PNL-111-XJN2.1.1-15.17 WITH CABLE NUMBER CA-K1-M-111-100.
17. PROVIDE MOTOR RATED DISCONNECT SWITCH MS-EF-111-02, CONNECT TO CIRCUIT PNL-111-XJN2.1.1-15.17 WITH CABLE NUMBER CA-K1-M-111-100.
18. PROVIDE MOTOR RATED DISCONNECT SWITCH MS-EF-111-02, CONNECT TO CIRCUIT PNL-111-XJN2.1.1-15.17 WITH CABLE NUMBER CA-K1-M-111-100.
19. PROVIDE MOTOR RATED DISCONNECT SWITCH MS-EF-111-02, CONNECT TO CIRCUIT PNL-111-XJN2.1.1-15.17 WITH CABLE NUMBER CA-K1-M-111-100.
20. PROVIDE DISCONNECT SWITCH DS-EHJ-111-01, CONNECT TO CIRCUIT PNL-111-XJN2.1.1-15.17 WITH CABLE NUMBER CA-K1-M-111-100.
21. PROVIDE DISCONNECT SWITCH DS-EHJ-111-01, CONNECT TO CIRCUIT PNL-111-XJN2.1.1-15.17 WITH CABLE NUMBER CA-K1-M-111-100.
22. PROVIDE DISCONNECT SWITCH DS-EHJ-111-01, CONNECT TO CIRCUIT PNL-111-XJN2.1.1-15.17 WITH CABLE NUMBER CA-K1-M-111-100.
23. PROVIDE DISCONNECT SWITCH DS-EHJ-111-01, CONNECT TO CIRCUIT PNL-111-XJN2.1.1-15.17 WITH CABLE NUMBER CA-K1-M-111-100.
24. PROVIDE DISCONNECT SWITCH DS-EHJ-111-01, CONNECT TO CIRCUIT PNL-111-XJN2.1.1-15.17 WITH CABLE NUMBER CA-K1-M-111-100.
25. PROVIDE DISCONNECT SWITCH DS-EHJ-111-01, CONNECT TO CIRCUIT PNL-111-XJN2.1.1-15.17 WITH CABLE NUMBER CA-K1-M-111-100.
26. PROVIDE DISCONNECT SWITCH DS-EHJ-111-01, CONNECT TO CIRCUIT PNL-111-XJN2.1.1-15.17 WITH CABLE NUMBER CA-K1-M-111-100.
27. PROVIDE DISCONNECT SWITCH DS-EHJ-111-01, CONNECT TO CIRCUIT PNL-111-XJN2.1.1-15.17 WITH CABLE NUMBER CA-K1-M-111-100.
28. PROVIDE DISCONNECT SWITCH DS-EHJ-111-01, CONNECT TO CIRCUIT PNL-111-XJN2.1.1-15.17 WITH CABLE NUMBER CA-K1-M-111-100.
29. PROVIDE DISCONNECT SWITCH DS-EHJ-111-01, CONNECT TO CIRCUIT PNL-111-XJN2.1.1-15.17 WITH CABLE NUMBER CA-K1-M-111-100.
30. NITROGEN GENERATOR, REFER TO FIRE PROTECTION PACKAGE FOR DETAILED INFORMATION, CONNECT TO CIRCUIT PNL-111-XJN2.1.1-15.17 WITH CABLE NUMBER CA-K1-M-111-100.

ISSUED FOR PERMIT



Engineering and  
Land Surveying, P.C.

**SOWINSKI SULLIVAN**

CONFIDENTIAL

THIS DRAWING IS CONFIDENTIAL. IT IS NOT TO BE REPRODUCED OR TRANSMITTED IN ANY FORM OR BY ANY MEANS, ELECTRONIC OR MECHANICAL, INCLUDING PHOTOCOPYING, RECORDING, OR BY ANY INFORMATION STORAGE AND RETRIEVAL SYSTEM, WITHOUT THE WRITTEN PERMISSION OF SOWINSKI SULLIVAN. ANY UNAUTHORIZED REPRODUCTION OR TRANSMISSION OF THIS DRAWING IS STRICTLY PROHIBITED AND WILL BE PROSECUTED TO THE FULL EXTENT OF THE LAW.

REV	DESCRIPTION	DATE
B	100% SUBMISSION	12/13/2022
A	INTERIM SUBMISSION	12/13/2022

**Kiewit**  
470 Chestnut Ridge Rd # 2,  
Woodcliff Lake, NJ 07877

**Hitachi Energy**  
801 Main Campus Drive  
Raleigh, North Carolina 27606

PROJECT

**CHPE**  
Champlain Hudson  
PowerExpress

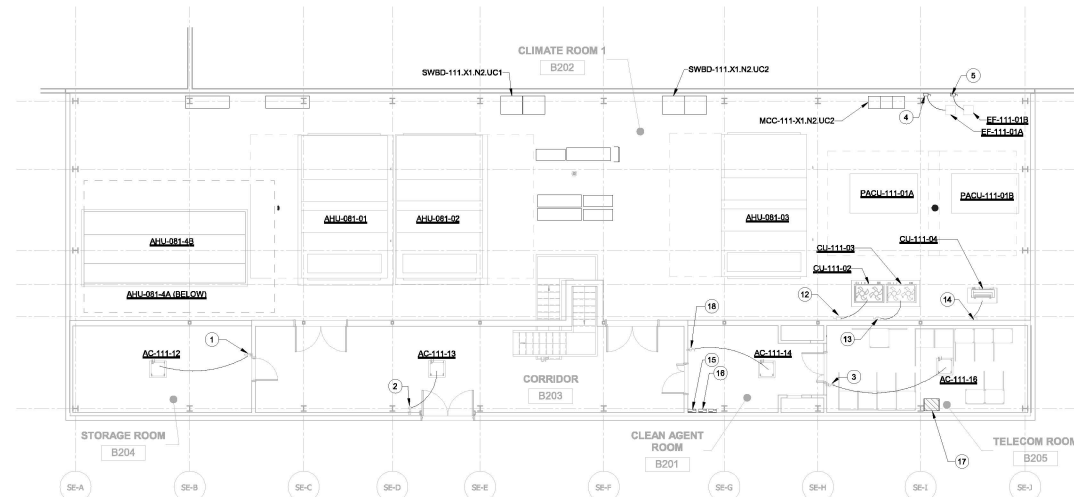
**Astoria HVDC  
Converter Station**  
31-45 20th Avenue, Astoria, Queens NY 11105  
Block #550 - Lot #310 - B/N #462437

**SERVICE BUILDING 1ST  
FLOOR HVAC POWER  
PLAN**

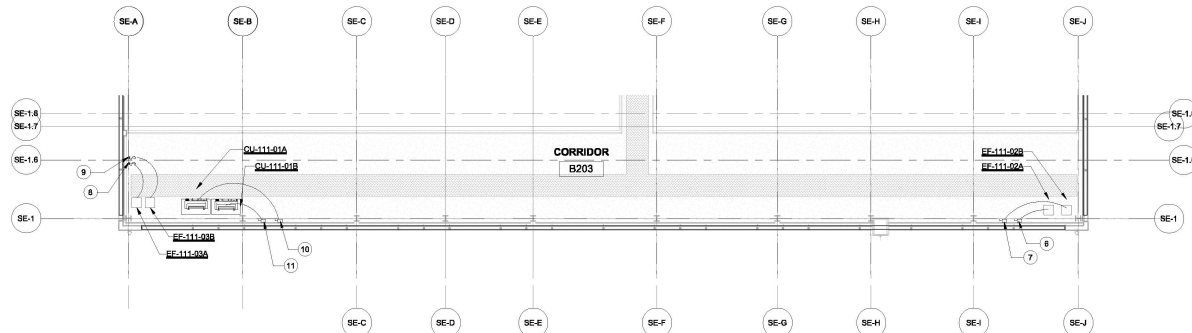
DATE: 12/13/2022  
INQUIRY NO: 100121  
DRAWING BY: X.L.B.  
CHECKED BY: D.D.B.  
DRAWING NO: E-125.00

CHPE FILE NO: 100121-001  
SOWINSKI SULLIVAN

WARNING - IT IS A VIOLATION, OF THE NEW YORK STATE EDUCATION LAW, SECTION 7209.2, FOR ANY PERSON, UNLESS SHE OR HE IS ACTING UNDER THE DIRECTION OF A LICENSED PROFESSIONAL ENGINEER OR REGISTERED ARCHITECT, TO ALTER THIS DOCUMENT IN ANY WAY. IF ALTERED, THE ALTERING PERSON SHALL COMPLY WITH THE REQUIREMENTS OF NEW YORK EDUCATION LAW, SECTION 7209.2.



1 HVAC POWER PLAN SERVICE BUILDING LEVEL 2  
E-126.00 1/8" = 1'-0"



2 HVAC POWER PLAN SERVICE BUILDING LEVEL 2 - EQUIPMENT PLATFORM  
E-126.00 1/8" = 1'-0"

WARNING - IT IS A VIOLATION, OF THE NEW YORK STATE EDUCATION LAW, SECTION 7209.2, FOR ANY PERSON, UNLESS SHE OR HE IS ACTING UNDER THE DIRECTION OF A LICENSED PROFESSIONAL ENGINEER OR REGISTERED ARCHITECT, TO ALTER THIS DOCUMENT IN ANY WAY. IF ALTERED, THE ALTERING PERSON SHALL COMPLY WITH THE REQUIREMENTS OF NEW YORK EDUCATION LAW, SECTION 7209.2.

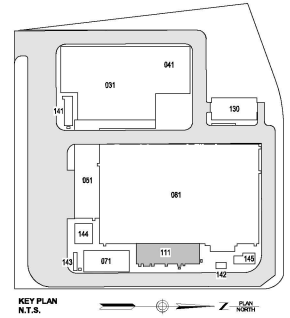
#### GENERAL NOTES:

1. REFER TO SHEET E-001.00 FOR GENERAL NOTES.
2. REFER TO SHEET E-060.00 FOR CABLE/CONDUIT SCHEDULE.
3. REFER TO MECHANICAL PACKAGE FOR HVAC DEVICES DETAILS INCLUDING ELECTRICAL LOAD CHARACTERISTICS.

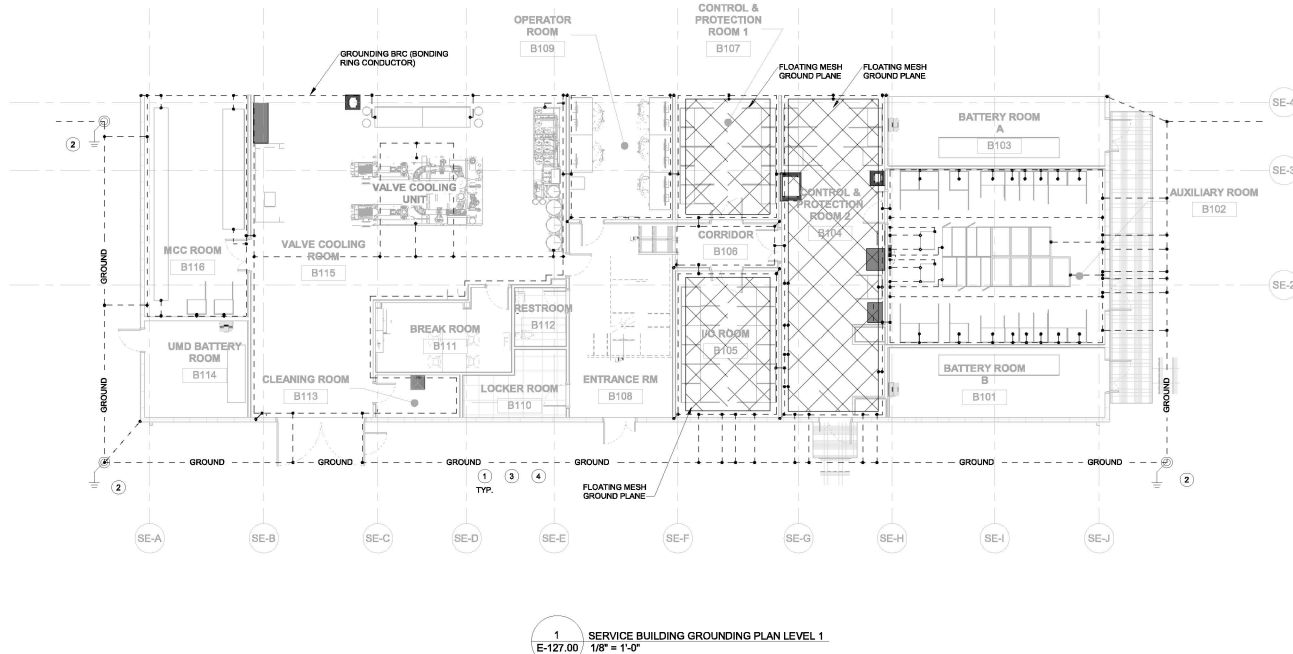
#### ELECTRICAL REVISIONS:

1. PROVIDE MOTOR RATED DISCONNECT SWITCH MS-AC-111-12. CONNECT TO CIRCUIT PNL-111-X3.N2.1.1-20.22 WITH CABLE NUMBER CA-K1-M-111-103.
2. PROVIDE MOTOR RATED DISCONNECT SWITCH MS-AC-111-13. CONNECT TO CIRCUIT PNL-111-X3.N2.1.1-20.22 WITH CABLE NUMBER CA-K1-M-111-103.
3. PROVIDE MOTOR RATED DISCONNECT SWITCH MS-AC-111-16. CONNECT TO CIRCUIT PNL-111-X3.N2.1.1-20.22 WITH CABLE NUMBER CA-K1-M-111-103.
4. PROVIDE DISCONNECT SWITCH MS-EF-111-01A. CONNECT TO CIRCUIT PNL-111-X3.N2.1.13.15.17 WITH CABLE NUMBER CA-K1-M-111-107.
5. PROVIDE DISCONNECT SWITCH MS-EF-111-01B. CONNECT TO CIRCUIT PNL-111-X3.N2.1.13.15.17 WITH CABLE NUMBER CA-K1-M-111-107.
6. PROVIDE DISCONNECT SWITCH MS-EF-111-02A. CONNECT TO CIRCUIT PNL-111-X3.N2.1.14.16.18 WITH CABLE NUMBER CA-K1-M-111-108.
7. PROVIDE DISCONNECT SWITCH MS-EF-111-02B. CONNECT TO CIRCUIT PNL-111-X3.N2.1.14.16.18 WITH CABLE NUMBER CA-K1-M-111-108.
8. PROVIDE MOTOR RATED DISCONNECT SWITCH MS-EF-111-02A. CONNECT TO CIRCUIT PNL-111-X3.N2.1.1-20.22 WITH CABLE NUMBER CA-K1-M-111-103.
9. PROVIDE MOTOR RATED DISCONNECT SWITCH MS-EF-111-02B. CONNECT TO CIRCUIT PNL-111-X3.N2.1.1-20.22 WITH CABLE NUMBER CA-K1-M-111-103.
10. PROVIDE DISCONNECT SWITCH DS-ACCU-111-01A. CONNECT TO CIRCUIT PNL-111-X3.N2.1.1-20.22 WITH CABLE NUMBER CA-K1-M-111-103.
11. PROVIDE DISCONNECT SWITCH DS-ACCU-111-01B. CONNECT TO CIRCUIT PNL-111-X3.N2.1.1-20.22 WITH CABLE NUMBER CA-K1-M-111-103.
12. PROVIDE DISCONNECT SWITCH DS-ACCU-111-02. CONNECT TO CIRCUIT PNL-111-X3.N2.1.1-20.22 WITH CABLE NUMBER CA-K1-M-111-103.
13. PROVIDE DISCONNECT SWITCH DS-ACCU-111-03. CONNECT TO CIRCUIT PNL-111-X3.N2.1.1-20.22 WITH CABLE NUMBER CA-K1-M-111-103.
14. PROVIDE DISCONNECT SWITCH DS-ACCU-111-04. CONNECT TO CIRCUIT PNL-111-X3.N2.1.1-20.22 WITH CABLE NUMBER CA-K1-M-111-103.
15. VESDA FIRE ALARM PANEL. REFER TO FIRE ALARM PACKAGE FOR DETAILS. CONNECT TO CIRCUIT PNL-ENG-111-X3.N2.1.1-8 WITH CABLE NUMBER CA-K1-F-111-101.
16. VESDA FIRE ALARM PANEL. REFER TO FIRE ALARM PACKAGE FOR DETAILS. CONNECT TO CIRCUIT PNL-ENG-111-X3.N2.1.1-8 WITH CABLE NUMBER CA-K1-F-111-101.
17. COMM ENCLOSURE CON-SVB-301. CONNECT TO CIRCUIT PNL-ENG-111-X3.N2.1.1-8 WITH CABLE NUMBER CA-K1-M-111-103.
18. PROVIDE MOTOR RATED DISCONNECT SWITCH MS-AC-111-14. CONNECT TO CIRCUIT PNL-111-X3.N2.1.1-20.22 WITH CABLE NUMBER CA-K1-M-111-103.

ISSUED FOR PERMIT



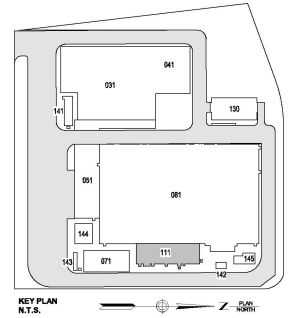


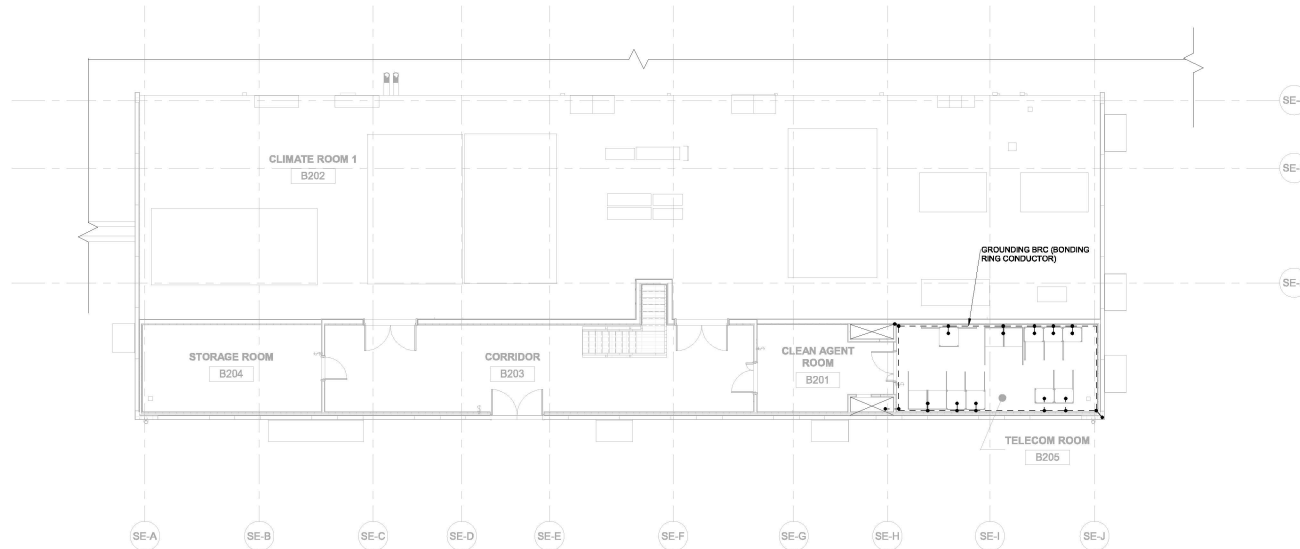
**ELECTRICAL GENERAL NOTES**

1. REFER TO SHEET E-001 FOR GENERAL NOTES.
2. REFERENCE SHEET E-400.00 FOR LIGHT FIXTURE SCHEDULE.
3. ALL INTERIOR CIRCUITS SHALL BE 2#12-#120 IN 3/4" MFT UNLESS NOTED OTHERWISE OR EXPOSED TO DAMAGE. ALL EXTERIOR CONDUIT SHALL BE #12-#120 IN RMC UNLESS NOTED OTHERWISE.
4. ALL 1ST FLOOR SERVICE BUILDING EMERGENCY LIGHTS SHALL BE FED FROM CIRCUIT: X3.N2.11.1-1.
5. ALL 2ND FLOOR SERVICE BUILDING EMERGENCY LIGHTS SHALL BE FED FROM CIRCUIT: X3.N2.11.1-2.

**ELECTRICAL KEYNOTES**

1. SEE DRAWING E-132.00 FOR OVERALL SITE GROUNDING PLAN.
2. GROUND RODS SHALL CONSIST OF 10' - 3/4" THICKNESS COPPER CLAD STEEL. SECTIONAL RODS COUPLED TOGETHER BY EXOTHERMIC CONNECTIONS.
3. MAIN GROUND GRID AND ALL GROUND TAPS TO BE 40 AWG COPPER CONDUCTORS BURIED AT AN APPROXIMATE DEPTH OF 24" BELOW THE FINISHED GRADE.
4. METALLIC EQUIPMENT SUCH AS FENCE, HAND RAILS GUARD RAIL, SUPPORT FRAMES OR ANY OTHER MISCELLANEOUS DEVICE LOCATED OUTDOORS SHALL BE BONDED TO GROUND. COORDINATE WITH ELECTRICAL PLANS AND CONTRACTOR FOR REQUIREMENTS.

**ISSUED FOR PERMIT**



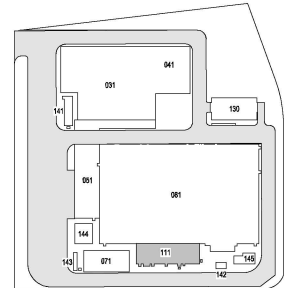
1 SERVICE BUILDING GROUNDING PLAN LEVEL 2  
E-128.00 1/8" = 1'-0"

#### ELECTRICAL GENERAL NOTES

1. REFER TO SHEET E-001 FOR GENERAL NOTES.
2. REFERENCE SHEET E-400.00 FOR LIGHT FIXTURE SCHEDULE.
3. ALL INTERIOR CIRCUITS SHALL BE 2012-#120 IN 3/4" EMT UNLESS NOTED OTHERWISE OR EXPOSED TO DAMAGE. ALL EXTERIOR CONDUIT SHALL BE #12-#120 IN RMC UNLESS NOTED OTHERWISE.
4. ALL 1ST FLOOR SERVICE BUILDING EMERGENCY LIGHTS SHALL BE FED FROM CIRCUIT X3.N2.11.1-1.
5. ALL 2ND FLOOR SERVICE BUILDING EMERGENCY LIGHTS SHALL BE FED FROM CIRCUIT X3.N2.11.1-2.

WARNING - IT IS A VIOLATION OF THE NEW YORK STATE EDUCATION LAW, SECTION 7209.2, FOR ANY PERSON, UNLESS SHE OR HE IS ACTING UNDER THE DIRECTION OF A LICENSED PROFESSIONAL ENGINEER OR REGISTERED ARCHITECT, TO ALTER THIS DOCUMENT IN ANY WAY. IF ALTERED, THE ALTERING PERSON SHALL COMPLY WITH THE REQUIREMENTS OF NEW YORK EDUCATION LAW, SECTION 7209.2.

#### ISSUED FOR PERMIT



KEY PLAN  
N.T.S.

**Engineering and Land Surveying, P.C.**  
370 7th Avenue  
SUITE 1804  
New York, NY 10001

**SOWINSKI SULLIVAN**  
25 Mechanic Avenue  
Sparks, NJ 07871

#### CONFIDENTIAL

THIS DRAWING IS CONFIDENTIAL IN NATURE. ANY REUSE OR REPRODUCTION OF THIS DRAWING WITHOUT THE WRITTEN PERMISSION OF SOWINSKI SULLIVAN IS PROHIBITED. THE USER OF THIS DRAWING SHALL BE RESPONSIBLE FOR OBTAINING THE NECESSARY PERMISSIONS FROM THE APPROPRIATE PARTIES. THE USER SHALL BE RESPONSIBLE FOR OBTAINING THE NECESSARY PERMISSIONS FROM THE APPROPRIATE PARTIES. THE USER SHALL BE RESPONSIBLE FOR OBTAINING THE NECESSARY PERMISSIONS FROM THE APPROPRIATE PARTIES.

REV	DESCRIPTION	DATE
B	100% SUBMISSION	12/13/2022
A	INTERIM SUBMISSION	12/13/2022

**Kiewit**  
470 Chestnut Ridge Rd # 2  
Woodcliff Lake, NJ 07877

**Hitachi Energy**  
901 Main Campus Drive  
Raleigh, North Carolina 27608

**PROJECT**

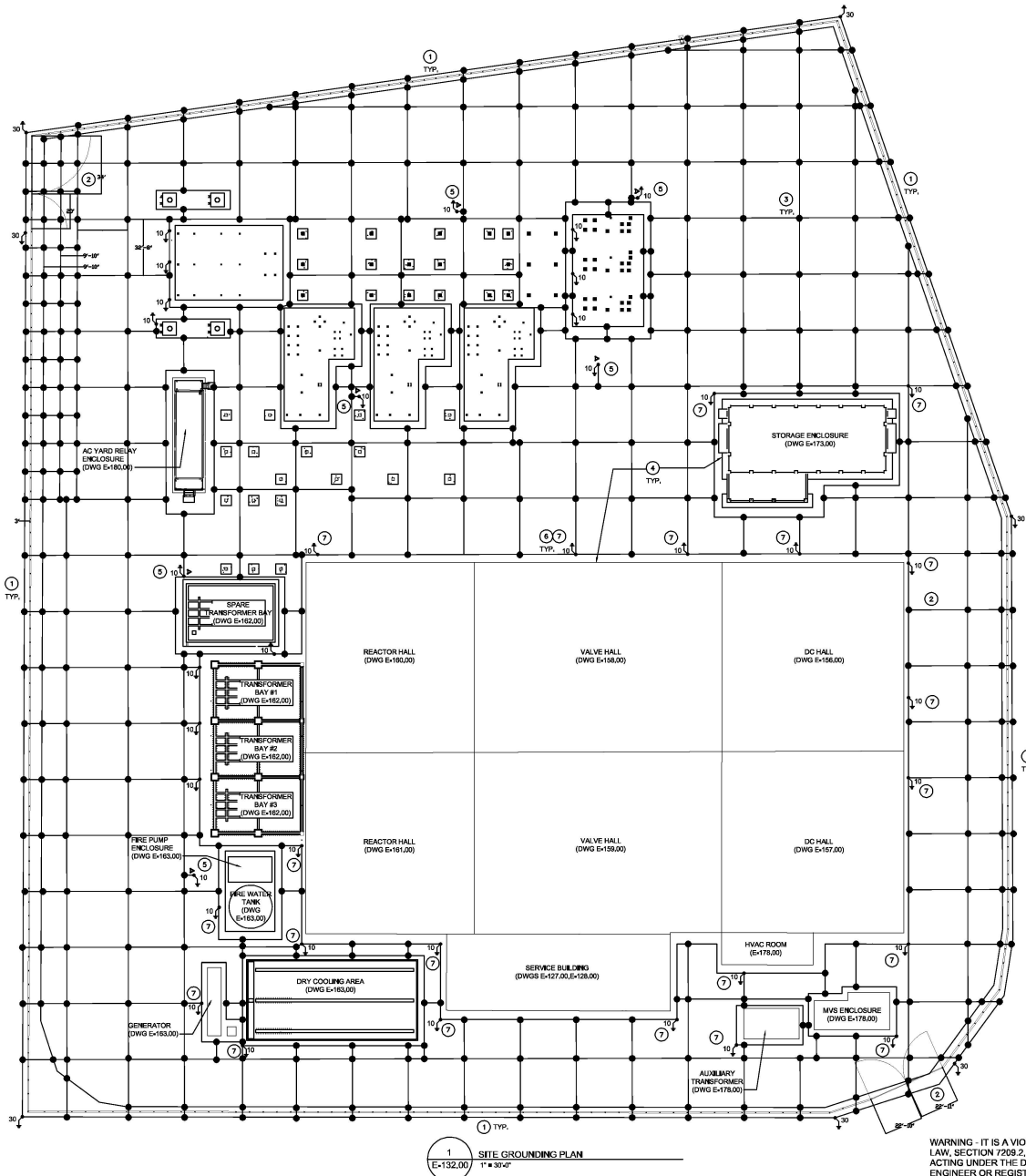
**CHPE**  
Champlain Hudson PowerExpress

**Astoria HVDC Converter Station**  
31-45 20th Avenue, Astoria, Queens NY 11105  
Block #850 - Lot #310 - BIN #4624437

#### SERVICE BUILDING 2ND FLOOR GROUNDING PLAN

**DATE** 12/13/2022  
**PROJECT NO** 100121  
**DRAWING BY** A.SOWINSKI  
**CHECKED BY** D.DUJAN  
**DRAWING NO** E-128.00

**CHPE**  
Champlain Hudson PowerExpress



#### ELECTRICAL GENERAL NOTES:

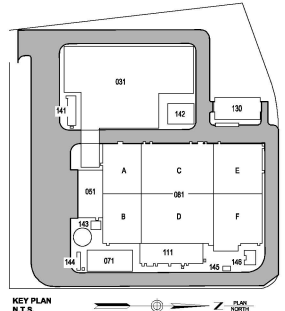
1. REFER TO SHEET E-001.00 FOR GENERAL NOTES
2. PERIMETER ELECTRODES, GROUND ELECTRODES AND THE TOP OF GROUND GRID SHALL BE BURIED AT A DEPTH OF 2' FROM FINISH GRADE.
3. GROUND RODS SHALL BE COPPER CLAD STEEL WITH MINIMUM OF 3/4" DIAMETER.
4. ALL CONNECTIONS MADE TO AND BETWEEN PARTS OF THE GROUND GRID SHALL BE EXOTHERMICALLY WELDED.

#### ELECTRICAL KEYNOTES\*

1. INSTALL A 4/0 AWG PERIMETER ELECTRODE 3' OUTSIDE THE PERIMETER SECURITY FENCE.
2. EXTEND THE GROUND MESH TO ENCOMPASS THE TOTAL GATE SWING PLUS AN ADDITIONAL 3'.
3. INSTALL A GROUND MESH CONSISTING OF 4/0 AWG STRANDED BARE GROUND CONDUCTOR AT A MAXIMUM SPACING OF 33'x33'. AT THE PERIMETER FENCE UNDER THE INCOMING AC OVERHEAD TRANSMISSION LINES, THE MESH SHALL BE 10'x16' MAXIMUM.
4. INSTALL A 4/0 AWG PERIMETER GROUND ELECTRODE 3' FROM EACH BUILDING AND LARGE FOUNDATION.
5. INSTALL A 10' GROUND ROD AND CONNECT TO EACH LIGHTNING TOWER, GANTRY AND OUTDOOR ARRESTOR AND BOND TO THE GROUND MESH SYSTEM.
6. INSTALL 10" GROUND ROD FOR EACH LIGHT POLE AND CONNECT POLE AND ROD TO GROUND MESH SYSTEM.
7. INSTALL GROUND RODS FOR BUILDING LIGHTNING PROTECTION SYSTEM AND BOND TO THE PERIMETER ELECTRODE.

#### LEGEND:

- 4/0 BARE STRANDED BARE COPPER GROUND ELECTRODE
- XX MIN. LENGTH IN FEET
- GROUND ROD
- GROUND GRID EXOTHERMIC WELD CONNECTION



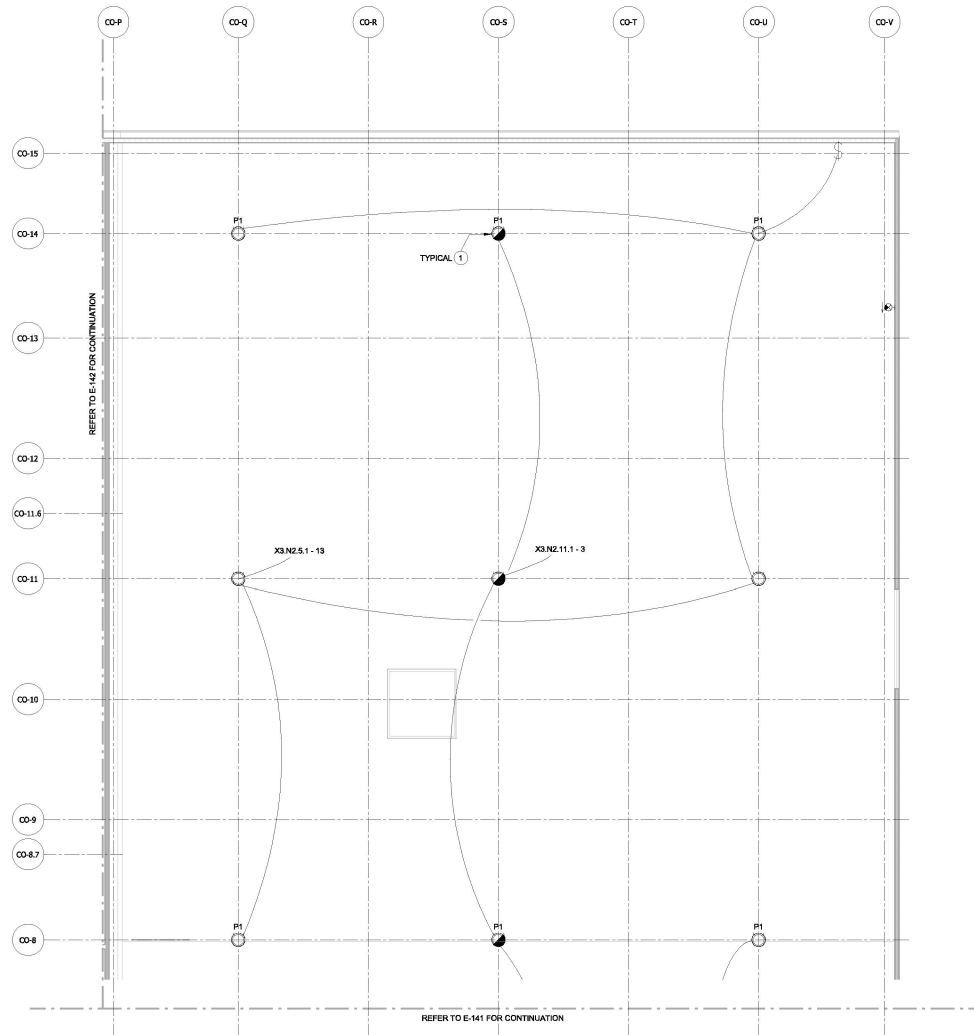
Engineering and  
Land Surveying, P.C.

370 7th Avenue  
Suite 1004  
New York, NY 10001

SOWINSKI  
SULLIVAN

25 Mohawk Avenue  
Sparta, NJ 07871

| CONFIDENTIAL   
   
   
   
   
   |  |  |  |
---
--
--
--
---|--|--|--|
| THIS DRAWING IS CONFIDENTIAL IN NATURE. ANY UNAUTHORIZED DISCLOSURE OR REPRODUCTION OF THIS DRAWING OR ANY PART THEREOF IS STRICTLY PROHIBITED. THE USER OF THIS DRAWING SHALL BE RESPONSIBLE FOR THE PROTECTION OF THIS DRAWING AND THE INFORMATION CONTAINED HEREIN. ANY UNAUTHORIZED DISCLOSURE OR REPRODUCTION OF THIS DRAWING OR ANY PART THEREOF SHALL BE CONSIDERED A VIOLATION OF THE TERMS AND CONDITIONS OF THE AGREEMENT BETWEEN THE USER AND THE ENGINEER. THE ENGINEER SHALL BE RESPONSIBLE FOR THE PROTECTION OF THIS DRAWING AND THE INFORMATION CONTAINED HEREIN. ANY UNAUTHORIZED DISCLOSURE OR REPRODUCTION OF THIS DRAWING OR ANY PART THEREOF SHALL BE CONSIDERED A VIOLATION OF THE TERMS AND CONDITIONS OF THE AGREEMENT BETWEEN THE USER AND THE ENGINEER. THE ENGINEER SHALL BE RESPONSIBLE FOR THE PROTECTION OF THIS DRAWING AND THE INFORMATION CONTAINED HEREIN. ANY UNAUTHORIZED DISCLOSURE OR REPRODUCTION OF THIS DRAWING OR ANY PART THEREOF SHALL BE CONSIDERED A VIOLATION OF THE TERMS AND CONDITIONS OF THE AGREEMENT BETWEEN THE USER AND THE ENGINEER. THE ENGINEER SHALL BE RESPONSIBLE FOR THE PROTECTION OF THIS DRAWING AND THE INFORMATION CONTAINED HEREIN. ANY UNAUTHORIZED DISCLOSURE OR REPRODUCTION OF THIS DRAWING OR ANY PART THEREOF SHALL BE CONSIDERED A VIOLATION OF THE TERMS AND CONDITIONS OF THE AGREEMENT BETWEEN THE USER AND THE ENGINEER. THE ENGINEER SHALL BE RESPONSIBLE FOR THE PROTECTION OF THIS DRAWING AND THE INFORMATION CONTAINED HEREIN. ANY UNAUTHORIZED DISCLOSURE OR REPRODUCTION OF THIS DRAWING OR ANY PART THEREOF SHALL BE CONSIDERED A VIOLATION OF THE TERMS AND CONDITIONS OF THE AGREEMENT BETWEEN THE USER AND THE ENGINEER. THE ENGINEER SHALL BE RESPONSIBLE FOR THE PROTECTION OF THIS DRAWING AND THE INFORMATION CONTAINED HEREIN. ANY UNAUTHORIZED DISCLOSURE OR REPRODUCTION OF THIS DRAWING OR ANY PART THEREOF SHALL BE CONSIDERED A VIOLATION OF THE TERMS AND CONDITIONS OF THE AGREEMENT BETWEEN THE USER AND THE ENGINEER. THE ENGINEER SHALL BE RESPONSIBLE FOR THE PROTECTION OF THIS DRAWING AND THE INFORMATION CONTAINED HEREIN. ANY UNAUTHORIZED DISCLOSURE OR REPRODUCTION OF THIS DRAWING OR ANY PART THEREOF SHALL BE CONSIDERED A VIOLATION OF THE TERMS AND CONDITIONS OF THE AGREEMENT BETWEEN THE USER AND THE ENGINEER. THE ENGINEER SHALL BE RESPONSIBLE FOR THE PROTECTION OF THIS DRAWING AND THE INFORMATION CONTAINED HEREIN. ANY UNAUTHORIZED DISCLOSURE OR REPRODUCTION OF THIS DRAWING OR ANY PART THEREOF SHALL BE CONSIDERED A VIOLATION OF THE TERMS AND CONDITIONS OF THE AGREEMENT BETWEEN THE USER AND THE ENGINEER. THE ENGINEER SHALL BE RESPONSIBLE FOR THE PROTECTION OF THIS DRAWING AND THE INFORMATION CONTAINED HEREIN. ANY UNAUTHORIZED DISCLOSURE OR REPRODUCTION OF THIS DRAWING OR ANY PART THEREOF SHALL BE CONSIDERED A VIOLATION OF THE TERMS AND CONDITIONS OF THE AGREEMENT BETWEEN THE USER AND THE ENGINEER. THE ENGINEER SHALL BE RESPONSIBLE FOR THE PROTECTION OF THIS DRAWING AND THE INFORMATION CONTAINED HEREIN. ANY UNAUTHORIZED DISCLOSURE OR REPRODUCTION OF THIS DRAWING OR ANY PART THEREOF SHALL BE CONSIDERED A VIOLATION OF THE TERMS AND CONDITIONS OF THE AGREEMENT BETWEEN THE USER AND THE ENGINEER. THE ENGINEER SHALL BE RESPONSIBLE FOR THE PROTECTION OF THIS DRAWING AND THE INFORMATION CONTAINED HEREIN. ANY UNAUTHORIZED DISCLOSURE OR REPRODUCTION OF THIS DRAWING OR ANY PART THEREOF SHALL BE CONSIDERED A VIOLATION OF THE TERMS AND CONDITIONS OF THE AGREEMENT BETWEEN THE USER AND THE ENGINEER. THE ENGINEER SHALL BE RESPONSIBLE FOR THE PROTECTION OF THIS DRAWING AND THE INFORMATION CONTAINED HEREIN. ANY UNAUTHORIZED DISCLOSURE OR REPRODUCTION OF THIS DRAWING OR ANY PART THEREOF SHALL BE CONSIDERED A VIOLATION OF THE TERMS AND CONDITIONS OF THE AGREEMENT BETWEEN THE USER AND THE ENGINEER. THE ENGINEER SHALL BE RESPONSIBLE FOR THE PROTECTION OF THIS DRAWING AND THE INFORMATION CONTAINED HEREIN. ANY UNAUTHORIZED DISCLOSURE OR REPRODUCTION OF THIS DRAWING OR ANY PART THEREOF SHALL BE CONSIDERED A VIOLATION OF THE TERMS AND CONDITIONS OF THE AGREEMENT BETWEEN THE USER AND THE ENGINEER. THE ENGINEER SHALL BE RESPONSIBLE FOR THE PROTECTION OF THIS DRAWING AND THE INFORMATION CONTAINED HEREIN. ANY UNAUTHORIZED DISCLOSURE OR REPRODUCTION OF THIS DRAWING OR ANY PART THEREOF SHALL BE CONSIDERED A VIOLATION OF THE TERMS AND CONDITIONS OF THE AGREEMENT BETWEEN THE USER AND THE ENGINEER. THE ENGINEER SHALL BE RESPONSIBLE FOR THE PROTECTION OF THIS DRAWING AND THE INFORMATION CONTAINED HEREIN. ANY UNAUTHORIZED DISCLOSURE OR REPRODUCTION OF THIS DRAWING OR ANY PART THEREOF SHALL BE CONSIDERED A VIOLATION OF THE TERMS AND CONDITIONS OF THE AGREEMENT BETWEEN THE USER AND THE ENGINEER. THE ENGINEER SHALL BE RESPONSIBLE FOR THE PROTECTION OF THIS DRAWING AND THE INFORMATION CONTAINED HEREIN. ANY UNAUTHORIZED DISCLOSURE OR REPRODUCTION OF THIS DRAWING OR ANY PART THEREOF SHALL BE CONSIDERED A VIOLATION OF THE TERMS AND CONDITIONS OF THE AGREEMENT BETWEEN THE USER AND THE ENGINEER. THE ENGINEER SHALL BE RESPONSIBLE FOR THE PROTECTION OF THIS DRAWING AND THE INFORMATION CONTAINED HEREIN. ANY UNAUTHORIZED DISCLOSURE OR REPRODUCTION OF THIS DRAWING OR ANY PART THEREOF SHALL BE CONSIDERED A VIOLATION OF THE TERMS AND CONDITIONS OF THE AGREEMENT BETWEEN THE USER AND THE ENGINEER. THE ENGINEER SHALL BE RESPONSIBLE FOR THE PROTECTION OF THIS DRAWING AND THE INFORMATION CONTAINED HEREIN. ANY UNAUTHORIZED DISCLOSURE OR REPRODUCTION OF THIS DRAWING OR ANY PART THEREOF SHALL BE CONSIDERED A VIOLATION OF THE TERMS AND CONDITIONS OF THE AGREEMENT BETWEEN THE USER AND THE ENGINEER. THE ENGINEER SHALL BE RESPONSIBLE FOR THE PROTECTION OF THIS DRAWING AND THE INFORMATION CONTAINED HEREIN. ANY UNAUTHORIZED DISCLOSURE OR REPRODUCTION OF THIS DRAWING OR ANY PART THEREOF SHALL BE CONSIDERED A VIOLATION OF THE TERMS AND CONDITIONS OF THE AGREEMENT BETWEEN THE USER AND THE ENGINEER. THE ENGINEER SHALL BE RESPONSIBLE FOR THE PROTECTION OF THIS DRAWING AND THE INFORMATION CONTAINED HEREIN. ANY UNAUTHORIZED DISCLOSURE OR REPRODUCTION OF THIS DRAWING OR ANY PART THEREOF SHALL BE CONSIDERED A VIOLATION OF THE TERMS AND CONDITIONS OF THE AGREEMENT BETWEEN THE USER AND THE ENGINEER. THE ENGINEER SHALL BE RESPONSIBLE FOR THE PROTECTION OF THIS DRAWING AND THE INFORMATION CONTAINED HEREIN. ANY UNAUTHORIZED DISCLOSURE OR REPRODUCTION OF THIS DRAWING OR ANY PART THEREOF SHALL BE CONSIDERED A VIOLATION OF THE TERMS AND CONDITIONS OF THE AGREEMENT BETWEEN THE USER AND THE ENGINEER. THE ENGINEER SHALL BE RESPONSIBLE FOR THE PROTECTION OF THIS DRAWING AND THE INFORMATION CONTAINED HEREIN. ANY UNAUTHORIZED DISCLOSURE OR REPRODUCTION OF THIS DRAWING OR ANY PART THEREOF SHALL BE CONSIDERED A VIOLATION OF THE TERMS AND CONDITIONS OF THE AGREEMENT BETWEEN THE USER AND THE ENGINEER. THE ENGINEER SHALL BE RESPONSIBLE FOR THE PROTECTION OF THIS DRAWING AND THE INFORMATION CONTAINED HEREIN. ANY UNAUTHORIZED DISCLOSURE OR REPRODUCTION OF THIS DRAWING OR ANY PART THEREOF SHALL BE CONSIDERED A VIOLATION OF THE TERMS AND CONDITIONS OF THE AGREEMENT BETWEEN THE USER AND THE ENGINEER. THE ENGINEER SHALL BE RESPONSIBLE FOR THE PROTECTION OF THIS DRAWING AND THE INFORMATION CONTAINED HEREIN. ANY UNAUTHORIZED DISCLOSURE OR REPRODUCTION OF THIS DRAWING OR ANY PART THEREOF SHALL BE CONSIDERED A VIOLATION OF THE TERMS AND CONDITIONS OF THE AGREEMENT BETWEEN THE USER AND THE ENGINEER. THE ENGINEER SHALL BE RESPONSIBLE FOR THE PROTECTION OF THIS DRAWING AND THE INFORMATION CONTAINED HEREIN. ANY UNAUTHORIZED DISCLOSURE OR REPRODUCTION OF THIS DRAWING OR ANY PART THEREOF SHALL BE CONSIDERED A VIOLATION OF THE TERMS AND CONDITIONS OF THE AGREEMENT BETWEEN THE USER AND THE ENGINEER. THE ENGINEER SHALL BE RESPONSIBLE FOR THE PROTECTION OF THIS DRAWING AND THE INFORMATION CONTAINED HEREIN. ANY UNAUTHORIZED DISCLOSURE OR REPRODUCTION OF THIS DRAWING OR ANY PART THEREOF SHALL BE CONSIDERED A VIOLATION OF THE TERMS AND CONDITIONS OF THE AGREEMENT BETWEEN THE USER AND THE ENGINEER. THE ENGINEER SHALL BE RESPONSIBLE FOR THE PROTECTION OF THIS DRAWING AND THE INFORMATION CONTAINED HEREIN. ANY UNAUTHORIZED DISCLOSURE OR REPRODUCTION OF THIS DRAWING OR ANY PART THEREOF SHALL BE CONSIDERED A VIOLATION OF THE TERMS AND CONDITIONS OF THE AGREEMENT BETWEEN THE USER AND THE ENGINEER. THE ENGINEER SHALL BE RESPONSIBLE FOR THE PROTECTION OF THIS DRAWING AND THE INFORMATION CONTAINED HEREIN. ANY UNAUTHORIZED DISCLOSURE OR REPRODUCTION OF THIS DRAWING OR ANY PART THEREOF SHALL BE CONSIDERED A VIOLATION OF THE TERMS AND CONDITIONS OF THE AGREEMENT BETWEEN THE USER AND THE ENGINEER. THE ENGINEER SHALL BE RESPONSIBLE FOR THE PROTECTION OF THIS DRAWING AND THE INFORMATION CONTAINED HEREIN. ANY UNAUTHORIZED DISCLOSURE OR REPRODUCTION OF THIS DRAWING OR ANY PART THEREOF SHALL BE CONSIDERED A VIOLATION OF THE TERMS AND CONDITIONS OF THE AGREEMENT BETWEEN THE USER AND THE ENGINEER. THE ENGINEER SHALL BE RESPONSIBLE FOR THE PROTECTION OF THIS DRAWING AND THE INFORMATION CONTAINED HEREIN. ANY UNAUTHORIZED DISCLOSURE OR REPRODUCTION OF THIS DRAWING OR ANY PART THEREOF SHALL BE CONSIDERED A VIOLATION OF THE TERMS AND CONDITIONS OF THE AGREEMENT BETWEEN THE USER AND THE ENGINEER. THE ENGINEER SHALL BE RESPONSIBLE FOR THE PROTECTION OF THIS DRAWING AND THE INFORMATION CONTAINED HEREIN. ANY UNAUTHORIZED DISCLOSURE OR REPRODUCTION OF THIS DRAWING OR ANY PART THEREOF SHALL BE CONSIDERED A VIOLATION OF THE TERMS AND CONDITIONS OF THE AGREEMENT BETWEEN THE USER AND THE ENGINEER. THE ENGINEER SHALL BE RESPONSIBLE FOR THE PROTECTION OF THIS DRAWING AND THE INFORMATION CONTAINED HEREIN. ANY UNAUTHORIZED DISCLOSURE OR REPRODUCTION OF THIS DRAWING OR ANY PART THEREOF SHALL BE CONSIDERED A VIOLATION OF THE TERMS AND CONDITIONS OF THE AGREEMENT BETWEEN THE USER AND THE ENGINEER. THE ENGINEER SHALL BE RESPONSIBLE FOR THE PROTECTION OF THIS DRAWING AND THE INFORMATION CONTAINED HEREIN. ANY UNAUTHORIZED DISCLOSURE OR REPRODUCTION OF THIS DRAWING OR ANY PART THEREOF SHALL BE CONSIDERED A VIOLATION OF THE TERMS AND CONDITIONS OF THE AGREEMENT BETWEEN
THE USER AND THE ENGINEER. THE ENGINEER SHALL BE RESPONSIBLE FOR THE PROTECTION OF THIS DRAWING AND THE INFORMATION CONTAINED HEREIN. ANY UNAUTHORIZED DISCLOSURE OR REPRODUCTION OF THIS DRAWING OR ANY PART THEREOF SHALL BE CONSIDERED A VIOLATION OF THE TERMS AND CONDITIONS OF THE AGREEMENT BETWEEN THE USER AND THE ENGINEER. THE ENGINEER SHALL BE RESPONSIBLE FOR THE PROTECTION OF THIS DRAWING AND THE INFORMATION CONTAINED HEREIN. ANY UNAUTHORIZED DISCLOSURE OR REPRODUCTION OF THIS DRAWING OR ANY PART THEREOF SHALL BE CONSIDERED A VIOLATION OF THE TERMS AND CONDITIONS OF THE AGREEMENT BETWEEN THE USER AND THE ENGINEER. THE ENGINEER SHALL BE RESPONSIBLE FOR THE PROTECTION OF THIS DRAWING AND THE INFORMATION CONTAINED HEREIN. ANY UNAUTHORIZED DISCLOSURE OR REPRODUCTION OF THIS DRAWING OR ANY PART THEREOF SHALL BE CONSIDERED A VIOLATION OF THE TERMS AND CONDITIONS OF THE AGREEMENT BETWEEN THE USER AND THE ENGINEER. THE ENGINEER SHALL BE RESPONSIBLE FOR THE PROTECTION OF THIS DRAWING AND THE INFORMATION CONTAINED HEREIN. ANY UNAUTHORIZED DISCLOSURE OR REPRODUCTION OF THIS DRAWING OR ANY PART THEREOF SHALL BE CONSIDERED A VIOLATION OF THE TERMS AND CONDITIONS OF THE AGREEMENT BETWEEN THE USER AND THE ENGINEER. THE ENGINEER SHALL BE RESPONSIBLE FOR THE PROTECTION OF THIS DRAWING AND THE INFORMATION CONTAINED HEREIN. ANY UNAUTHORIZED DISCLOSURE OR REPRODUCTION OF THIS DRAWING OR ANY PART THEREOF SHALL BE CONSIDERED A VIOLATION OF THE TERMS AND CONDITIONS OF THE AGREEMENT BETWEEN THE USER AND THE ENGINEER. THE ENGINEER SHALL BE RESPONSIBLE FOR THE PROTECTION OF THIS DRAWING AND THE INFORMATION CONTAINED HEREIN. ANY UNAUTHORIZED DISCLOSURE OR REPRODUCTION OF THIS DRAWING OR ANY PART THEREOF SHALL BE CONSIDERED A VIOLATION OF THE TERMS AND CONDITIONS OF THE AGREEMENT BETWEEN THE USER AND THE ENGINEER. THE ENGINEER SHALL BE RESPONSIBLE FOR THE PROTECTION OF THIS DRAWING AND THE INFORMATION CONTAINED HEREIN. ANY UNAUTHORIZED DISCLOSURE OR REPRODUCTION OF THIS DRAWING OR ANY PART THEREOF SHALL BE CONSIDERED A VIOLATION OF THE TERMS AND CONDITIONS OF THE AGREEMENT BETWEEN THE USER AND THE ENGINEER. THE ENGINEER SHALL BE RESPONSIBLE FOR THE PROTECTION OF THIS DRAWING AND THE INFORMATION CONTAINED HEREIN. ANY UNAUTHORIZED DISCLOSURE OR REPRODUCTION OF THIS DRAWING OR ANY PART THEREOF SHALL BE CONSIDERED A VIOLATION OF THE TERMS AND CONDITIONS OF THE AGREEMENT BETWEEN THE USER AND THE ENGINEER. THE ENGINEER SHALL BE RESPONSIBLE FOR THE PROTECTION OF THIS DRAWING AND THE INFORMATION CONTAINED HEREIN. ANY UNAUTHORIZED DISCLOSURE OR REPRODUCTION OF THIS DRAWING OR ANY PART THEREOF SHALL BE CONSIDERED A VIOLATION OF THE TERMS AND CONDITIONS OF THE AGREEMENT BETWEEN THE USER AND THE ENGINEER. THE ENGINEER SHALL BE RESPONSIBLE FOR THE PROTECTION OF THIS DRAWING AND THE INFORMATION CONTAINED HEREIN. ANY UNAUTHORIZED DISCLOSURE OR REPRODUCTION OF THIS DRAWING OR ANY PART THEREOF SHALL BE CONSIDERED A VIOLATION OF THE TERMS AND CONDITIONS OF THE AGREEMENT BETWEEN THE USER AND THE ENGINEER. THE ENGINEER SHALL BE RESPONSIBLE FOR THE PROTECTION OF THIS DRAWING AND THE INFORMATION CONTAINED HEREIN. ANY UNAUTHORIZED DISCLOSURE OR REPRODUCTION OF THIS DRAWING OR ANY PART THEREOF SHALL BE CONSIDERED A VIOLATION OF THE TERMS AND CONDITIONS OF THE AGREEMENT BETWEEN THE USER AND THE ENGINEER. THE ENGINEER SHALL BE RESPONSIBLE FOR THE PROTECTION OF THIS DRAWING AND THE INFORMATION CONTAINED HEREIN. ANY UNAUTHORIZED DISCLOSURE OR REPRODUCTION OF THIS DRAWING OR ANY PART THEREOF SHALL BE CONSIDERED A VIOLATION OF THE TERMS AND CONDITIONS OF THE AGREEMENT BETWEEN THE USER AND THE ENGINEER. THE ENGINEER SHALL BE RESPONSIBLE FOR THE PROTECTION OF THIS DRAWING AND THE INFORMATION CONTAINED HEREIN. ANY UNAUTHORIZED DISCLOSURE OR REPRODUCTION OF THIS DRAWING OR ANY PART THEREOF SHALL BE CONSIDERED A VIOLATION OF THE TERMS AND CONDITIONS OF THE AGREEMENT BETWEEN THE USER AND THE ENGINEER. THE ENGINEER SHALL BE RESPONSIBLE FOR THE PROTECTION OF THIS DRAWING AND THE INFORMATION CONTAINED HEREIN. ANY UNAUTHORIZED DISCLOSURE OR REPRODUCTION OF THIS DRAWING OR ANY PART THEREOF SHALL BE CONSIDERED A VIOLATION OF THE TERMS AND CONDITIONS OF THE AGREEMENT BETWEEN THE USER AND THE ENGINEER. THE ENGINEER SHALL BE RESPONSIBLE FOR THE PROTECTION OF THIS DRAWING AND THE INFORMATION CONTAINED HEREIN. ANY UNAUTHORIZED DISCLOSURE OR REPRODUCTION OF THIS DRAWING OR ANY PART THEREOF SHALL BE CONSIDERED A VIOLATION OF THE TERMS AND CONDITIONS OF THE AGREEMENT BETWEEN THE USER AND THE ENGINEER. THE ENGINEER SHALL BE RESPONSIBLE FOR THE PROTECTION OF THIS DRAWING AND THE INFORMATION CONTAINED HEREIN. ANY UNAUTHORIZED DISCLOSURE OR REPRODUCTION OF THIS DRAWING OR ANY PART THEREOF SHALL BE CONSIDERED A VIOLATION OF THE TERMS AND CONDITIONS OF THE AGREEMENT BETWEEN THE USER AND THE ENGINEER. THE ENGINEER SHALL BE RESPONSIBLE FOR THE PROTECTION OF THIS DRAWING AND THE INFORMATION CONTAINED HEREIN. ANY UNAUTHORIZED DISCLOSURE OR REPRODUCTION OF THIS DRAWING OR ANY PART THEREOF SHALL BE CONSIDERED A VIOLATION OF THE TERMS AND CONDITIONS OF THE AGREEMENT BETWEEN THE USER AND THE ENGINEER. THE ENGINEER SHALL BE RESPONSIBLE FOR THE PROTECTION OF THIS DRAWING AND THE INFORMATION CONTAINED HEREIN. ANY UNAUTHORIZED DISCLOSURE OR REPRODUCTION OF THIS DRAWING OR ANY PART THEREOF SHALL BE CONSIDERED A VIOLATION OF THE TERMS AND CONDITIONS OF THE AGREEMENT BETWEEN THE USER AND THE ENGINEER. THE ENGINEER SHALL BE RESPONSIBLE FOR THE PROTECTION OF THIS DRAWING AND THE INFORMATION CONTAINED HEREIN. ANY UNAUTHORIZED DISCLOSURE OR REPRODUCTION OF THIS DRAWING OR ANY PART THEREOF SHALL BE CONSIDERED A VIOLATION OF THE TERMS AND CONDITIONS OF THE AGREEMENT BETWEEN THE USER AND THE ENGINEER. THE ENGINEER SHALL BE RESPONSIBLE FOR THE PROTECTION OF THIS DRAWING AND THE INFORMATION CONTAINED HEREIN. ANY UNAUTHORIZED DISCLOSURE OR REPRODUCTION OF THIS DRAWING OR ANY PART THEREOF SHALL BE CONSIDERED A VIOLATION OF THE TERMS AND CONDITIONS OF THE AGREEMENT BETWEEN THE USER AND THE ENGINEER. THE ENGINEER SHALL BE RESPONSIBLE FOR THE PROTECTION OF THIS DRAWING AND THE INFORMATION CONTAINED HEREIN. ANY UNAUTHORIZED DISCLOSURE OR REPRODUCTION OF THIS DRAWING OR ANY PART THEREOF SHALL BE CONSIDERED A VIOLATION OF THE TERMS AND CONDITIONS OF THE AGREEMENT BETWEEN THE USER AND THE ENGINEER. THE ENGINEER SHALL BE RESPONSIBLE FOR THE PROTECTION OF THIS DRAWING AND THE INFORMATION CONTAINED HEREIN. ANY UNAUTHORIZED DISCLOSURE OR REPRODUCTION OF THIS DRAWING OR ANY PART THEREOF SHALL BE CONSIDERED A VIOLATION OF THE TERMS AND CONDITIONS OF THE AGREEMENT BETWEEN THE USER AND THE ENGINEER. THE ENGINEER SHALL BE RESPONSIBLE FOR THE PROTECTION OF THIS DRAWING AND THE INFORMATION CONTAINED HEREIN. ANY UNAUTHORIZED DISCLOSURE OR REPRODUCTION OF THIS DRAWING OR ANY PART THEREOF SHALL BE CONSIDERED A VIOLATION OF THE TERMS AND CONDITIONS OF THE AGREEMENT BETWEEN THE USER AND THE ENGINEER. THE ENGINEER SHALL BE RESPONSIBLE FOR THE PROTECTION OF THIS DRAWING AND THE INFORMATION CONTAINED HEREIN. ANY UNAUTHORIZED DISCLOSURE OR REPRODUCTION OF THIS DRAWING OR ANY PART THEREOF SHALL BE CONSIDERED A VIOLATION OF THE TERMS AND CONDITIONS OF THE AGREEMENT BETWEEN THE USER AND THE ENGINEER. THE ENGINEER SHALL BE RESPONSIBLE FOR THE PROTECTION OF THIS DRAWING AND THE INFORMATION CONTAINED HEREIN. ANY UNAUTHORIZED DISCLOSURE OR REPRODUCTION OF THIS DRAWING OR ANY PART THEREOF SHALL BE CONSIDERED A VIOLATION OF THE TERMS AND CONDITIONS OF THE AGREEMENT BETWEEN THE USER AND THE ENGINEER. THE ENGINEER SHALL BE RESPONSIBLE FOR THE PROTECTION OF THIS DRAWING AND THE INFORMATION CONTAINED HEREIN. ANY UNAUTHORIZED DISCLOSURE OR REPRODUCTION OF THIS DRAWING OR ANY PART THEREOF SHALL BE CONSIDERED A VIOLATION OF THE TERMS AND CONDITIONS OF THE AGREEMENT BETWEEN THE USER AND THE ENGINEER. THE ENGINEER SHALL BE RESPONSIBLE FOR THE PROTECTION OF THIS DRAWING AND THE INFORMATION CONTAINED HEREIN. ANY UNAUTHORIZED DISCLOSURE OR REPRODUCTION OF THIS DRAWING OR ANY PART THEREOF SHALL BE CONSIDERED A VIOLATION OF THE TERMS AND CONDITIONS OF THE AGREEMENT BETWEEN THE USER AND THE ENGINEER. THE ENGINEER SHALL BE RESPONSIBLE FOR THE PROTECTION OF THIS DRAWING AND THE INFORMATION CONTAINED HEREIN. ANY UNAUTHORIZED DISCLOSURE OR REPRODUCTION OF THIS DRAWING OR ANY PART THEREOF SHALL BE CONSIDERED A VIOLATION OF THE TERMS AND CONDITIONS OF THE AGREEMENT BETWEEN THE USER AND THE ENGINEER. THE ENGINEER SHALL BE RESPONSIBLE FOR THE PROTECTION OF THIS DRAWING AND THE INFORMATION CONTAINED HEREIN. ANY UNAUTHORIZED DISCLOSURE OR REPRODUCTION OF THIS DRAWING OR ANY PART THEREOF SHALL BE CONSIDERED A VIOLATION OF THE TERMS AND CONDITIONS OF THE AGREEMENT BETWEEN THE USER AND THE ENGINEER. THE ENGINEER SHALL BE RESPONSIBLE FOR THE PROTECTION OF THIS DRAWING AND THE INFORMATION CONTAINED HEREIN. ANY UNAUTHORIZED DISCLOSURE OR REPRODUCTION OF THIS DRAWING OR ANY PART THEREOF SHALL BE CONSIDERED A VIOLATION OF THE TERMS AND CONDITIONS OF THE AGREEMENT BETWEEN THE USER AND THE ENGINEER. THE ENGINEER SHALL BE RESPONSIBLE FOR THE PROTECTION OF THIS DRAWING AND THE INFORMATION CONTAINED HEREIN. ANY UNAUTHORIZED DISCLOSURE OR REPRODUCTION OF THIS DRAWING OR ANY PART THEREOF SHALL BE CONSIDERED A VIOLATION OF THE TERMS AND CONDITIONS OF THE AGREEMENT BETWEEN THE USER AND THE ENGINEER. THE ENGINEER SHALL BE RESPONSIBLE FOR THE PROTECTION OF THIS DRAWING AND THE INFORMATION CONTAINED HEREIN. ANY UNAUTHORIZED DISCLOSURE OR REPRODUCTION OF THIS DRAWING OR ANY PART THEREOF SHALL BE CONSIDERED A VIOLATION OF THE TERMS AND CONDITIONS OF THE AGREEMENT BETWEEN THE USER AND THE ENGINEER. THE ENGINEER SHALL BE RESPONSIBLE FOR THE PROTECTION OF THIS DRAWING AND THE INFORMATION CONTAINED HEREIN. ANY UNAUTHORIZED DISCLOSURE OR REPRODUCTION OF THIS DRAWING OR ANY PART THEREOF SHALL BE CONSIDERED A VIOLATION OF THE TERMS AND CONDITIONS OF THE AGREEMENT BETWEEN THE USER AND THE ENGINEER. THE ENGINEER SHALL BE RESPONSIBLE FOR THE PROTECTION OF THIS DRAWING AND THE INFORMATION CONTAINED
HEREIN. ANY UNAUTHORIZED DISCLOSURE OR REPRODUCTION OF THIS DRAWING OR ANY PART THEREOF SHALL BE CONSIDERED A VIOLATION OF THE TERMS AND CONDITIONS OF THE AGREEMENT BETWEEN THE USER AND THE ENGINEER. THE ENGINEER SHALL BE RESPONSIBLE FOR THE PROTECTION OF THIS DRAWING AND THE INFORMATION CONTAINED HEREIN. ANY UNAUTHORIZED DISCLOSURE OR REPRODUCTION OF THIS DRAWING OR ANY PART THEREOF SHALL BE CONSIDERED A VIOLATION OF THE TERMS AND CONDITIONS OF THE AGREEMENT BETWEEN THE USER AND THE ENGINEER. THE ENGINEER SHALL BE RESPONSIBLE FOR THE PROTECTION OF THIS DRAWING AND THE INFORMATION CONTAINED HEREIN. ANY UNAUTHORIZED DISCLOSURE OR REPRODUCTION OF THIS DRAWING OR ANY PART THEREOF SHALL BE CONSIDERED A VIOLATION OF THE TERMS AND CONDITIONS OF THE AGREEMENT BETWEEN THE USER AND THE ENGINEER. THE ENGINEER SHALL BE RESPONSIBLE FOR THE PROTECTION OF THIS DRAWING AND THE INFORMATION CONTAINED HEREIN. ANY UNAUTHORIZED DISCLOSURE OR REPRODUCTION OF THIS DRAWING OR ANY PART THEREOF SHALL BE CONSIDERED A VIOLATION OF THE TERMS AND CONDITIONS OF THE AGREEMENT BETWEEN THE USER AND THE ENGINEER. THE ENGINEER SHALL BE RESPONSIBLE FOR THE PROTECTION OF THIS DRAWING AND THE INFORMATION CONTAINED HEREIN. ANY UNAUTHORIZED DISCLOSURE OR REPRODUCTION OF THIS DRAWING OR ANY PART THEREOF SHALL BE CONSIDERED A VIOLATION OF THE TERMS AND CONDITIONS OF THE AGREEMENT BETWEEN THE USER AND THE ENGINEER. THE ENGINEER SHALL BE RESPONSIBLE FOR THE PROTECTION OF THIS DRAWING AND THE INFORMATION CONTAINED HEREIN. ANY UNAUTHORIZED DISCLOSURE OR REPRODUCTION OF THIS DRAWING OR ANY PART THEREOF SHALL BE CONSIDERED A VIOLATION OF THE TERMS AND CONDITIONS OF THE AGREEMENT BETWEEN THE USER AND THE ENGINEER. THE ENGINEER SHALL BE RESPONSIBLE FOR THE PROTECTION OF THIS DRAWING AND THE INFORMATION CONTAINED HEREIN. ANY UNAUTHORIZED DISCLOSURE OR REPRODUCTION OF THIS DRAWING OR ANY PART THEREOF SHALL BE CONSIDERED A VIOLATION OF THE TERMS AND CONDITIONS OF THE AGREEMENT BETWEEN THE USER AND THE ENGINEER. THE ENGINEER SHALL BE RESPONSIBLE FOR THE PROTECTION OF THIS DRAWING AND THE INFORMATION CONTAINED HEREIN. ANY UNAUTHORIZED DISCLOSURE OR REPRODUCTION OF THIS DRAWING OR ANY PART THEREOF SHALL BE CONSIDERED A VIOLATION OF THE TERMS AND CONDITIONS OF THE AGREEMENT BETWEEN THE USER AND THE ENGINEER. THE ENGINEER SHALL BE RESPONSIBLE FOR THE PROTECTION OF THIS DRAWING AND THE INFORMATION CONTAINED HEREIN. ANY UNAUTHORIZED DISCLOSURE OR REPRODUCTION OF THIS DRAWING OR ANY PART THEREOF SHALL BE CONSIDERED A VIOLATION OF THE TERMS AND CONDITIONS OF THE AGREEMENT BETWEEN THE USER AND THE ENGINEER. THE ENGINEER SHALL BE RESPONSIBLE FOR THE PROTECTION OF THIS DRAWING AND THE INFORMATION CONTAINED HEREIN. ANY UNAUTHORIZED DISCLOSURE OR REPRODUCTION OF THIS DRAWING OR ANY PART THEREOF SHALL BE CONSIDERED A VIOLATION OF THE TERMS AND CONDITIONS OF THE AGREEMENT BETWEEN THE USER AND THE ENGINEER. THE ENGINEER SHALL BE RESPONSIBLE FOR THE PROTECTION OF THIS DRAWING AND THE INFORMATION CONTAINED HEREIN. ANY UNAUTHORIZED DISCLOSURE OR REPRODUCTION OF THIS DRAWING OR ANY PART THEREOF SHALL BE CONSIDERED A VIOLATION OF THE TERMS AND CONDITIONS OF THE AGREEMENT BETWEEN THE USER AND THE ENGINEER. THE ENGINEER SHALL BE RESPONSIBLE FOR THE PROTECTION OF THIS DRAWING AND THE INFORMATION CONTAINED HEREIN. ANY UNAUTHORIZED DISCLOSURE OR REPRODUCTION OF THIS DRAWING OR ANY PART THEREOF SHALL BE CONSIDERED A VIOLATION OF THE TERMS AND CONDITIONS OF THE AGREEMENT BETWEEN THE USER AND THE ENGINEER. THE ENGINEER SHALL BE RESPONSIBLE FOR THE PROTECTION OF THIS DRAWING AND THE INFORMATION CONTAINED HEREIN. ANY UNAUTHORIZED DISCLOSURE OR REPRODUCTION OF THIS DRAWING OR ANY PART THEREOF SHALL BE CONSIDERED A VIOLATION OF THE TERMS AND CONDITIONS OF THE AGREEMENT BETWEEN THE USER AND THE ENGINEER. THE ENGINEER SHALL BE RESPONSIBLE FOR THE PROTECTION OF THIS DRAWING AND THE INFORMATION CONTAINED HEREIN. ANY UNAUTHORIZED DISCLOSURE OR REPRODUCTION OF THIS DRAWING OR ANY PART THEREOF SHALL BE CONSIDERED A VIOLATION OF THE TERMS AND CONDITIONS OF THE AGREEMENT BETWEEN THE USER AND THE ENGINEER. THE ENGINEER SHALL BE RESPONSIBLE FOR THE PROTECTION OF THIS DRAWING AND THE INFORMATION CONTAINED HEREIN. ANY UNAUTHORIZED DISCLOSURE OR REPRODUCTION OF THIS DRAWING OR ANY PART THEREOF SHALL BE CONSIDERED A VIOLATION OF THE TERMS AND CONDITIONS OF THE AGREEMENT BETWEEN THE USER AND THE ENGINEER. THE ENGINEER SHALL BE RESPONSIBLE FOR THE PROTECTION OF THIS DRAWING AND THE INFORMATION CONTAINED HEREIN. ANY UNAUTHORIZED DISCLOSURE OR REPRODUCTION OF THIS DRAWING OR ANY PART THEREOF SHALL BE CONSIDERED A VIOLATION OF THE TERMS AND CONDITIONS OF THE AGREEMENT BETWEEN THE USER AND THE ENGINEER. THE ENGINEER SHALL BE RESPONSIBLE FOR THE PROTECTION OF THIS DRAWING AND THE INFORMATION CONTAINED HEREIN. ANY UNAUTHORIZED DISCLOSURE OR REPRODUCTION OF THIS DRAWING OR ANY PART THEREOF SHALL BE CONSIDERED A VIOLATION OF THE TERMS AND CONDITIONS OF THE AGREEMENT BETWEEN THE USER AND THE ENGINEER. THE ENGINEER SHALL BE RESPONSIBLE FOR THE PROTECTION OF THIS DRAWING AND THE INFORMATION CONTAINED HEREIN. ANY UNAUTHORIZED DISCLOSURE OR REPRODUCTION OF THIS DRAWING OR ANY PART THEREOF SHALL BE CONSIDERED A VIOLATION OF THE TERMS AND CONDITIONS OF THE AGREEMENT BETWEEN THE USER AND THE ENGINEER. THE ENGINEER SHALL BE RESPONSIBLE FOR THE PROTECTION OF THIS DRAWING AND THE INFORMATION CONTAINED HEREIN. ANY UNAUTHORIZED DISCLOSURE OR REPRODUCTION OF THIS DRAWING OR ANY PART THEREOF SHALL BE CONSIDERED A VIOLATION OF THE TERMS AND CONDITIONS OF THE AGREEMENT BETWEEN THE USER AND THE ENGINEER. THE ENGINEER SHALL BE RESPONSIBLE FOR THE PROTECTION OF THIS DRAWING AND THE INFORMATION CONTAINED HEREIN. ANY UNAUTHORIZED DISCLOSURE OR REPRODUCTION OF THIS DRAWING OR ANY PART THEREOF SHALL BE CONSIDERED A VIOLATION OF THE TERMS AND CONDITIONS OF THE AGREEMENT BETWEEN THE USER AND THE ENGINEER. THE ENGINEER SHALL BE RESPONSIBLE FOR THE PROTECTION OF THIS DRAWING AND THE INFORMATION CONTAINED HEREIN. ANY UNAUTHORIZED DISCLOSURE OR REPRODUCTION OF THIS DRAWING OR ANY PART THEREOF SHALL BE CONSIDERED A VIOLATION OF THE TERMS AND CONDITIONS OF THE AGREEMENT BETWEEN THE USER AND THE ENGINEER. THE ENGINEER SHALL BE RESPONSIBLE FOR THE PROTECTION OF THIS DRAWING AND THE INFORMATION CONTAINED HEREIN. ANY UNAUTHORIZED DISCLOSURE OR REPRODUCTION OF THIS DRAWING OR ANY PART THEREOF SHALL BE CONSIDERED A VIOLATION OF THE TERMS AND CONDITIONS OF THE AGREEMENT BETWEEN THE USER AND THE ENGINEER. THE ENGINEER SHALL BE RESPONSIBLE FOR THE PROTECTION OF THIS DRAWING AND THE INFORMATION CONTAINED HEREIN. ANY UNAUTHORIZED DISCLOSURE OR REPRODUCTION OF THIS DRAWING OR ANY PART THEREOF SHALL BE CONSIDERED A VIOLATION OF THE TERMS AND CONDITIONS OF THE AGREEMENT BETWEEN THE USER AND THE ENGINEER. THE ENGINEER SHALL BE RESPONSIBLE FOR THE PROTECTION OF THIS DRAWING AND THE INFORMATION CONTAINED HEREIN. ANY UNAUTHORIZED DISCLOSURE OR REPRODUCTION OF THIS DRAWING OR ANY PART THEREOF SHALL BE CONSIDERED A VIOLATION OF THE TERMS AND CONDITIONS OF THE AGREEMENT BETWEEN THE USER AND THE ENGINEER. THE ENGINEER SHALL BE RESPONSIBLE FOR THE PROTECTION OF THIS DRAWING AND THE INFORMATION CONTAINED HEREIN. ANY UNAUTHORIZED DISCLOSURE OR REPRODUCTION OF THIS DRAWING OR ANY PART THEREOF SHALL BE CONSIDERED A VIOLATION OF THE TERMS AND CONDITIONS OF THE AGREEMENT BETWEEN THE USER AND THE ENGINEER. THE ENGINEER SHALL BE RESPONSIBLE FOR THE PROTECTION OF THIS DRAWING AND THE INFORMATION CONTAINED HEREIN. ANY UNAUTHORIZED DISCLOSURE OR REPRODUCTION OF THIS DRAWING OR ANY PART THEREOF SHALL BE CONSIDERED A VIOLATION OF THE TERMS AND CONDITIONS OF THE AGREEMENT BETWEEN THE USER AND THE ENGINEER. THE ENGINEER SHALL BE RESPONSIBLE FOR THE PROTECTION OF THIS DRAWING AND THE INFORMATION CONTAINED HEREIN. ANY UNAUTHORIZED DISCLOSURE OR REPRODUCTION OF THIS DRAWING OR ANY PART THEREOF SHALL BE CONSIDERED A VIOLATION OF THE TERMS AND CONDITIONS OF THE AGREEMENT BETWEEN THE USER AND THE ENGINEER. THE ENGINEER SHALL BE RESPONSIBLE FOR THE PROTECTION OF THIS DRAWING AND THE INFORMATION CONTAINED HEREIN. ANY UNAUTHORIZED DISCLOSURE OR REPRODUCTION OF THIS DRAWING OR ANY PART THEREOF SHALL BE CONSIDERED A VIOLATION OF THE TERMS AND CONDITIONS OF THE AGREEMENT BETWEEN THE USER AND THE ENGINEER. THE ENGINEER SHALL BE RESPONSIBLE FOR THE PROTECTION OF THIS DRAWING AND THE INFORMATION CONTAINED HEREIN. ANY UNAUTHORIZED DISCLOSURE OR REPRODUCTION OF THIS DRAWING OR ANY PART THEREOF SHALL BE CONSIDERED A VIOLATION OF THE TERMS AND CONDITIONS OF THE AGREEMENT BETWEEN THE USER AND THE ENGINEER. THE ENGINEER SHALL BE RESPONSIBLE FOR THE PROTECTION OF THIS DRAWING AND THE INFORMATION CONTAINED HEREIN. ANY UNAUTHORIZED DISCLOSURE OR REPRODUCTION OF THIS DRAWING OR ANY PART THEREOF SHALL BE CONSIDERED A VIOLATION OF THE TERMS AND CONDITIONS OF THE AGREEMENT BETWEEN THE USER AND THE ENGINEER. THE ENGINEER SHALL BE RESPONSIBLE FOR THE PROTECTION OF THIS DRAWING AND THE INFORMATION CONTAINED HEREIN. ANY UNAUTHORIZED DISCLOSURE OR REPRODUCTION OF THIS DRAWING OR ANY PART THEREOF SHALL BE CONSIDERED A VIOLATION OF THE TERMS AND CONDITIONS OF THE AGREEMENT BETWEEN THE USER AND THE ENGINEER. THE ENGINEER SHALL BE RESPONSIBLE FOR THE PROTECTION OF THIS DRAWING AND THE INFORMATION CONTAINED HEREIN. ANY UNAUTHORIZED DISCLOSURE OR REPRODUCTION OF THIS DRAWING OR ANY PART THEREOF SHALL BE CONSIDERED A VIOLATION OF THE TERMS AND CONDITIONS OF THE AGREEMENT BETWEEN THE USER AND THE ENGINEER. THE ENGINEER SHALL BE RESPONSIBLE FOR THE PROTECTION OF THIS DRAWING AND THE INFORMATION CONTAINED HEREIN. ANY UNAUTHORIZED DISCLOSURE OR REPRODUCTION OF THIS DRAWING OR ANY PART THEREOF SHALL BE CONSIDERED A VIOLATION OF THE TERMS AND CONDITIONS OF THE AGREEMENT BETWEEN THE USER AND THE ENGINEER. THE ENGINEER SHALL BE RESPONSIBLE FOR THE PROTECTION OF THIS DRAWING AND THE INFORMATION CONTAINED HEREIN. ANY UNAUTHORIZED DISCLOSURE OR REPRODUCTION OF THIS DRAWING OR ANY PART THEREOF SHALL BE CONSIDERED A VIOLATION OF THE TERMS
AND CONDITIONS OF THE AGREEMENT BETWEEN THE USER AND THE ENGINEER. THE ENGINEER SHALL BE RESPONSIBLE FOR THE PROTECTION OF THIS DRAWING AND THE INFORMATION CONTAINED HEREIN. ANY UNAUTHORIZED DISCLOSURE OR REPRODUCTION OF THIS DRAWING OR ANY PART THEREOF SHALL BE CONSIDERED A VIOLATION OF THE TERMS AND CONDITIONS OF THE AGREEMENT BETWEEN THE USER AND THE ENGINEER. THE ENGINEER SHALL BE RESPONSIBLE FOR THE PROTECTION OF THIS DRAWING AND THE INFORMATION CONTAINED HEREIN. ANY UNAUTHORIZED DISCLOSURE OR REPRODUCTION OF THIS DRAWING OR ANY PART THEREOF SHALL BE CONSIDERED A VIOLATION OF THE TERMS AND CONDITIONS OF THE AGREEMENT BETWEEN THE USER AND THE ENGINEER. THE ENGINEER SHALL BE RESPONSIBLE FOR THE PROTECTION OF THIS DRAWING AND THE INFORMATION CONTAINED HEREIN. ANY UNAUTHORIZED DISCLOSURE OR REPRODUCTION OF THIS DRAWING OR ANY PART THEREOF SHALL BE CONSIDERED A VIOLATION OF THE TERMS AND CONDITIONS OF THE AGREEMENT BETWEEN THE USER AND THE ENGINEER. THE ENGINEER SHALL BE RESPONSIBLE FOR THE PROTECTION OF THIS DRAWING AND THE INFORMATION CONTAINED HEREIN. ANY UNAUTHORIZED DISCLOSURE OR REPRODUCTION OF THIS DRAWING OR ANY PART THEREOF SHALL BE CONSIDERED A VIOLATION OF THE TERMS AND CONDITIONS OF THE AGREEMENT BETWEEN THE USER AND THE ENGINEER. THE ENGINEER SHALL BE RESPONSIBLE FOR THE PROTECTION OF THIS DRAWING AND THE INFORMATION CONTAINED HEREIN. ANY UNAUTHORIZED DISCLOSURE OR REPRODUCTION OF THIS DRAWING OR ANY PART THEREOF SHALL BE CONSIDERED A VIOLATION OF THE TERMS AND CONDITIONS OF THE AGREEMENT BETWEEN THE USER AND THE ENGINEER. THE ENGINEER SHALL BE RESPONSIBLE FOR THE PROTECTION OF THIS DRAWING AND THE INFORMATION CONTAINED HEREIN. ANY UNAUTHORIZED DISCLOSURE OR REPRODUCTION OF THIS DRAWING OR ANY PART THEREOF SHALL BE CONSIDERED A VIOLATION OF THE TERMS AND CONDITIONS OF THE AGREEMENT BETWEEN THE USER AND THE ENGINEER. THE ENGINEER SHALL BE RESPONSIBLE FOR THE PROTECTION OF THIS DRAWING AND THE INFORMATION CONTAINED HEREIN. ANY UNAUTHORIZED DISCLOSURE OR REPRODUCTION OF THIS DRAWING OR ANY PART THEREOF SHALL BE CONSIDERED A VIOLATION OF THE TERMS AND CONDITIONS OF THE AGREEMENT BETWEEN THE USER AND THE ENGINEER. THE ENGINEER SHALL BE RESPONSIBLE FOR THE PROTECTION OF THIS DRAWING AND THE INFORMATION CONTAINED HEREIN. ANY UNAUTHORIZED DISCLOSURE OR REPRODUCTION OF THIS DRAWING OR ANY PART THEREOF SHALL BE CONSIDERED A VIOLATION OF THE TERMS AND CONDITIONS OF THE AGREEMENT BETWEEN THE USER AND THE ENGINEER. THE ENGINEER SHALL BE RESPONSIBLE FOR THE PROTECTION OF THIS DRAWING AND THE INFORMATION CONTAINED HEREIN. ANY UNAUTHORIZED DISCLOSURE OR REPRODUCTION OF THIS DRAWING OR ANY PART THEREOF SHALL BE CONSIDERED A VIOLATION OF THE TERMS AND CONDITIONS OF THE AGREEMENT BETWEEN THE USER AND THE ENGINEER. THE ENGINEER SHALL BE RESPONSIBLE FOR THE PROTECTION OF THIS DRAWING AND THE INFORMATION CONTAINED HEREIN. ANY UNAUTHORIZED DISCLOSURE OR REPRODUCTION OF THIS DRAWING OR ANY PART THEREOF SHALL BE CONSIDERED A VIOLATION OF THE TERMS AND CONDITIONS OF THE AGREEMENT BETWEEN THE USER AND THE ENGINEER. THE ENGINEER SHALL BE RESPONSIBLE FOR THE PROTECTION OF THIS DRAWING AND THE INFORMATION CONTAINED HEREIN. ANY UNAUTHORIZED DISCLOSURE OR REPRODUCTION OF THIS DRAWING OR ANY PART THEREOF SHALL BE CONSIDERED A VIOLATION OF THE TERMS AND CONDITIONS OF THE AGREEMENT BETWEEN THE USER AND THE ENGINEER. THE ENGINEER SHALL BE RESPONSIBLE FOR THE PROTECTION OF THIS DRAWING AND THE INFORMATION CONTAINED HEREIN. ANY UNAUTHORIZED DISCLOSURE OR REPRODUCTION OF THIS DRAWING OR ANY PART THEREOF SHALL BE CONSIDERED A VIOLATION OF THE TERMS AND CONDITIONS OF THE AGREEMENT BETWEEN THE USER AND THE ENGINEER. THE ENGINEER SHALL BE RESPONSIBLE FOR THE PROTECTION OF THIS DRAWING AND THE INFORMATION CONTAINED HEREIN. ANY UNAUTHORIZED DISCLOSURE OR REPRODUCTION OF THIS DRAWING OR ANY PART THEREOF SHALL BE CONSIDERED A VIOLATION OF THE TERMS AND CONDITIONS OF THE AGREEMENT BETWEEN THE USER AND THE ENGINEER. THE ENGINEER SHALL BE RESPONSIBLE FOR THE PROTECTION OF THIS DRAWING AND THE INFORMATION CONTAINED HEREIN. ANY UNAUTHORIZED DISCLOSURE OR REPRODUCTION OF THIS DRAWING OR ANY PART THEREOF SHALL BE CONSIDERED A VIOLATION OF THE TERMS AND CONDITIONS OF THE AGREEMENT BETWEEN THE USER AND THE ENGINEER. THE ENGINEER SHALL BE RESPONSIBLE FOR THE PROTECTION OF THIS DRAWING AND THE INFORMATION CONTAINED HEREIN. ANY UNAUTHORIZED DISCLOSURE OR REPRODUCTION OF THIS DRAWING OR ANY PART THEREOF SHALL BE CONSIDERED A VIOLATION OF THE TERMS AND CONDITIONS OF THE AGREEMENT BETWEEN THE USER AND THE ENGINEER. THE ENGINEER SHALL BE RESPONSIBLE FOR THE PROTECTION OF THIS DRAWING AND THE INFORMATION CONTAINED HEREIN. ANY UNAUTHORIZED DISCLOSURE OR REPRODUCTION OF THIS DRAWING OR ANY PART THEREOF SHALL BE CONSIDERED A VIOLATION OF THE TERMS AND CONDITIONS OF THE AGREEMENT BETWEEN THE USER AND THE ENGINEER. THE ENGINEER SHALL BE RESPONSIBLE FOR THE PROTECTION OF THIS DRAWING AND THE INFORMATION CONTAINED HEREIN. ANY UNAUTHORIZED DISCLOSURE OR REPRODUCTION OF THIS DRAWING OR ANY PART THEREOF SHALL BE CONSIDERED A VIOLATION OF THE TERMS AND CONDITIONS OF THE AGREEMENT BETWEEN THE USER AND THE ENGINEER. THE ENGINEER SHALL BE RESPONSIBLE FOR THE PROTECTION OF THIS DRAWING AND THE INFORMATION CONTAINED HEREIN. ANY UNAUTHORIZED DISCLOSURE OR REPRODUCTION OF THIS DRAWING OR ANY PART THEREOF SHALL BE CONSIDERED A VIOLATION OF THE TERMS AND CONDITIONS OF THE AGREEMENT BETWEEN THE USER AND THE ENGINEER. THE ENGINEER SHALL BE RESPONSIBLE FOR THE PROTECTION OF THIS DRAWING AND THE INFORMATION CONTAINED HEREIN. ANY UNAUTHORIZED DISCLOSURE OR REPRODUCTION OF THIS DRAWING OR ANY PART THEREOF SHALL BE CONSIDERED A VIOLATION OF THE TERMS AND CONDITIONS OF THE AGREEMENT BETWEEN THE USER AND THE ENGINEER. THE ENGINEER SHALL BE RESPONSIBLE FOR THE PROTECTION OF THIS DRAWING AND THE INFORMATION CONTAINED HEREIN. ANY UNAUTHORIZED DISCLOSURE OR REPRODUCTION OF THIS DRAWING OR ANY PART THEREOF SHALL BE CONSIDERED A VIOLATION OF THE TERMS AND CONDITIONS OF THE AGREEMENT BETWEEN THE USER AND THE ENGINEER. THE ENGINEER SHALL BE RESPONSIBLE FOR THE PROTECTION OF THIS DRAWING AND THE INFORMATION CONTAINED HEREIN. ANY UNAUTHORIZED DISCLOSURE OR REPRODUCTION OF THIS DRAWING OR ANY PART THEREOF SHALL BE CONSIDERED A VIOLATION OF THE TERMS AND CONDITIONS OF THE AGREEMENT BETWEEN THE USER AND THE ENGINEER. THE ENGINEER SHALL BE RESPONSIBLE FOR THE PROTECTION OF THIS DRAWING AND THE INFORMATION CONTAINED HEREIN. ANY UNAUTHORIZED DISCLOSURE OR REPRODUCTION OF THIS DRAWING OR ANY PART THEREOF SHALL BE CONSIDERED A VIOLATION OF THE TERMS AND CONDITIONS OF THE AGREEMENT BETWEEN THE USER AND THE ENGINEER. THE ENGINEER SHALL BE RESPONSIBLE FOR THE PROTECTION OF THIS DRAWING AND THE INFORMATION CONTAINED HEREIN. ANY UNAUTHORIZED DISCLOSURE OR REPRODUCTION OF THIS DRAWING OR ANY PART THEREOF SHALL BE CONSIDERED A VIOLATION OF THE TERMS AND CONDITIONS OF THE AGREEMENT BETWEEN THE USER AND THE ENGINEER. THE ENGINEER SHALL BE RESPONSIBLE FOR THE PROTECTION OF THIS DRAWING AND THE INFORMATION CONTAINED HEREIN. ANY UNAUTHORIZED DISCLOSURE OR REPRODUCTION OF THIS DRAWING OR ANY PART THEREOF SHALL BE CONSIDERED A VIOLATION OF THE TERMS AND CONDITIONS OF THE AGREEMENT BETWEEN THE USER AND THE ENGINEER. THE ENGINEER SHALL BE RESPONSIBLE FOR THE PROTECTION OF THIS DRAWING AND THE INFORMATION CONTAINED HEREIN. ANY UNAUTHORIZED DISCLOSURE OR REPRODUCTION OF THIS DRAWING OR ANY PART THEREOF SHALL BE CONSIDERED A VIOLATION OF THE TERMS AND CONDITIONS OF THE AGREEMENT BETWEEN THE USER AND THE ENGINEER. THE ENGINEER SHALL BE RESPONSIBLE FOR THE PROTECTION OF THIS DRAWING AND THE INFORMATION CONTAINED HEREIN. ANY UNAUTHORIZED DISCLOSURE OR REPRODUCTION OF THIS DRAWING OR ANY PART THEREOF SHALL BE CONSIDERED A VIOLATION OF THE TERMS AND CONDITIONS OF THE AGREEMENT BETWEEN THE USER AND THE ENGINEER. THE ENGINEER SHALL BE RESPONSIBLE FOR THE PROTECTION OF THIS DRAWING AND THE INFORMATION CONTAINED HEREIN. ANY UNAUTHORIZED DISCLOSURE OR REPRODUCTION OF THIS DRAWING OR ANY PART THEREOF SHALL BE CONSIDERED A VIOLATION OF THE TERMS AND CONDITIONS OF THE AGREEMENT BETWEEN THE USER AND THE ENGINEER. THE ENGINEER SHALL BE RESPONSIBLE FOR THE PROTECTION OF THIS DRAWING AND THE INFORMATION CONTAINED HEREIN. ANY UNAUTHORIZED DISCLOSURE OR REPRODUCTION OF THIS DRAWING OR ANY PART THEREOF SHALL BE CONSIDERED A VIOLATION OF THE TERMS AND CONDITIONS OF THE AGREEMENT BETWEEN THE USER AND THE ENGINEER. THE ENGINEER SHALL BE RESPONSIBLE FOR THE PROTECTION OF THIS DRAWING AND THE INFORMATION CONTAINED HEREIN. ANY UNAUTHORIZED DISCLOSURE OR REPRODUCTION OF THIS DRAWING OR ANY PART THEREOF SHALL BE CONSIDERED A VIOLATION OF THE TERMS AND CONDITIONS OF THE AGREEMENT BETWEEN THE USER AND THE ENGINEER. THE ENGINEER SHALL BE RESPONSIBLE FOR THE PROTECTION OF THIS DRAWING AND THE INFORMATION CONTAINED HEREIN. ANY UNAUTHORIZED DISCLOSURE OR REPRODUCTION OF THIS DRAWING OR ANY PART THEREOF SHALL BE CONSIDERED A VIOLATION OF THE TERMS AND CONDITIONS OF THE AGREEMENT BETWEEN THE USER AND THE ENGINEER. THE ENGINEER SHALL BE RESPONSIBLE FOR THE PROTECTION OF THIS DRAWING AND THE INFORMATION CONTAINED HEREIN. ANY UNAUTHORIZED DISCLOSURE OR REPRODUCTION OF THIS DRAWING OR ANY PART THEREOF SHALL BE CONSIDERED A VIOLATION OF THE TERMS AND CONDITIONS OF THE AGREEMENT BETWEEN THE USER AND THE ENGINEER. THE ENGINEER SHALL BE RESPONSIBLE FOR THE PROTECTION OF THIS DRAWING AND THE INFORMATION CONTAINED HEREIN. ANY UNAUTHORIZED DISCLOSURE OR REPRODUCTION OF THIS DRAWING OR ANY PART THEREOF SHALL BE CONSIDERED A VIOLATION OF THE TERMS AND CONDITIONS OF THE AGREEMENT BETWEEN THE USER AND THE ENGINEER. THE ENGINEER SHALL BE RESPONSIBLE FOR THE PROTECTION OF THIS DRAWING AND THE INFORMATION CONTAINED HEREIN. ANY UNAUTHORIZED DISCLOSURE OR REPRODUCTION OF THIS DRAWING OR ANY PART THEREOF SHALL BE CONSIDERED A VIOLATION OF THE TERMS AND CONDITIONS OF THE AGREEMENT BETWEEN THE USER AND THE ENGINEER. THE ENGINEER SHALL BE RESPONSIBLE FOR THE PROTECTION OF THIS
DRAWING AND THE INFORMATION CONTAINED HEREIN. ANY UNAUTHORIZED DISCLOSURE OR REPRODUCTION OF THIS DRAWING OR ANY PART THEREOF SHALL BE CONSIDERED A VIOLATION OF THE TERMS AND CONDITIONS OF THE AGREEMENT BETWEEN THE USER AND THE ENGINEER. THE ENGINEER SHALL BE RESPONSIBLE FOR THE PROTECTION OF THIS DRAWING AND THE INFORMATION CONTAINED HEREIN. ANY UNAUTHORIZED DISCLOSURE OR REPRODUCTION OF THIS DRAWING OR ANY PART THEREOF SHALL BE CONSIDERED A VIOLATION OF THE TERMS AND CONDITIONS OF THE AGREEMENT BETWEEN THE USER AND THE ENGINEER. THE ENGINEER SHALL BE RESPONSIBLE FOR THE PROTECTION OF THIS DRAWING AND THE INFORMATION CONTAINED HEREIN. ANY UNAUTHORIZED DISCLOSURE OR REPRODUCTION OF THIS DRAWING OR ANY PART THEREOF SHALL BE CONSIDERED A VIOLATION OF THE TERMS AND CONDITIONS OF THE AGREEMENT BETWEEN THE USER AND THE ENGINEER. THE ENGINEER SHALL BE RESPONSIBLE FOR THE PROTECTION OF THIS DRAWING AND THE INFORMATION CONTAINED HEREIN. ANY UNAUTHORIZED DISCLOSURE OR REPRODUCTION OF THIS DRAWING OR ANY PART THEREOF SHALL BE CONSIDERED A VIOLATION OF THE TERMS AND CONDITIONS OF THE AGREEMENT BETWEEN THE USER AND THE ENGINEER. THE ENGINEER SHALL BE RESPONSIBLE FOR THE PROTECTION OF THIS DRAWING AND THE INFORMATION CONTAINED HEREIN. ANY UNAUTHORIZED DISCLOSURE OR REPRODUCTION OF THIS DRAWING OR ANY PART THEREOF SHALL BE CONSIDERED A VIOLATION OF THE TERMS AND CONDITIONS OF THE AGREEMENT BETWEEN THE USER AND THE ENGINEER. THE ENGINEER SHALL BE RESPONSIBLE FOR THE PROTECTION OF THIS DRAWING AND THE INFORMATION CONTAINED HEREIN. ANY UNAUTHORIZED DISCLOSURE OR REPRODUCTION OF THIS DRAWING OR ANY PART THEREOF SHALL BE CONSIDERED A VIOLATION OF THE TERMS AND CONDITIONS OF THE AGREEMENT BETWEEN THE USER AND THE ENGINEER. THE ENGINEER SHALL BE RESPONSIBLE FOR THE PROTECTION OF THIS DRAWING AND THE INFORMATION CONTAINED HEREIN. ANY UNAUTHORIZED DISCLOSURE OR REPRODUCTION OF THIS DRAWING OR ANY PART THEREOF SHALL BE CONSIDERED A VIOLATION OF THE TERMS AND CONDITIONS OF THE AGREEMENT BETWEEN THE USER AND THE ENGINEER. THE ENGINEER SHALL BE RESPONSIBLE FOR THE PROTECTION OF THIS DRAWING AND THE INFORMATION CONTAINED HEREIN. ANY UNAUTHORIZED DISCLOSURE OR REPRODUCTION OF THIS DRAWING OR ANY PART THEREOF SHALL BE CONSIDERED A VIOLATION OF THE TERMS AND CONDITIONS OF THE AGREEMENT BETWEEN THE USER AND THE ENGINEER. THE ENGINEER SHALL BE RESPONSIBLE FOR THE PROTECTION OF THIS DRAWING AND THE INFORMATION CONTAINED HEREIN. ANY UNAUTHORIZED DISCLOSURE OR REPRODUCTION OF THIS DRAWING OR ANY PART THEREOF SHALL BE CONSIDERED A VIOLATION OF THE TERMS AND CONDITIONS OF THE AGREEMENT BETWEEN THE USER AND THE ENGINEER. THE ENGINEER SHALL BE RESPONSIBLE FOR THE PROTECTION OF THIS DRAWING AND THE INFORMATION CONTAINED HEREIN. ANY UNAUTHORIZED DISCLOSURE OR REPRODUCTION OF THIS DRAWING OR ANY PART THEREOF SHALL BE CONSIDERED A VIOLATION OF THE TERMS AND CONDITIONS OF THE AGREEMENT BETWEEN THE USER AND THE ENGINEER. THE ENGINEER SHALL BE RESPONSIBLE FOR THE PROTECTION OF THIS DRAWING AND THE INFORMATION CONTAINED HEREIN. ANY UNAUTHORIZED DISCLOSURE OR REPRODUCTION OF THIS DRAWING OR ANY PART THEREOF SHALL BE CONSIDERED A VIOLATION OF THE TERMS AND CONDITIONS OF THE AGREEMENT BETWEEN THE USER AND THE ENGINEER. THE ENGINEER SHALL BE RESPONSIBLE FOR THE PROTECTION OF THIS DRAWING AND THE INFORMATION CONTAINED HEREIN. ANY UNAUTHORIZED DISCLOSURE OR REPRODUCTION OF THIS DRAWING OR ANY PART THEREOF SHALL BE CONSIDERED A VIOLATION OF THE TERMS AND CONDITIONS OF THE AGREEMENT BETWEEN THE USER AND THE ENGINEER. THE ENGINEER SHALL BE RESPONSIBLE FOR THE PROTECTION OF THIS DRAWING AND THE INFORMATION CONTAINED HEREIN. ANY UNAUTHORIZED DISCLOSURE OR REPRODUCTION OF THIS DRAWING OR ANY PART THEREOF SHALL BE CONSIDERED A VIOLATION OF THE TERMS AND CONDITIONS OF THE AGREEMENT BETWEEN THE USER AND THE ENGINEER. THE ENGINEER SHALL BE RESPONSIBLE FOR THE PROTECTION OF THIS DRAWING AND THE INFORMATION CONTAINED HEREIN. ANY UNAUTHORIZED DISCLOSURE OR REPRODUCTION OF THIS DRAWING OR ANY PART THEREOF SHALL BE CONSIDERED A VIOLATION OF THE TERMS AND CONDITIONS OF THE AGREEMENT BETWEEN THE USER AND THE ENGINEER. THE ENGINEER SHALL BE RESPONSIBLE FOR THE PROTECTION OF THIS DRAWING AND THE INFORMATION CONTAINED HEREIN. ANY UNAUTHORIZED DISCLOSURE OR REPRODUCTION OF THIS DRAWING OR ANY PART THEREOF SHALL BE CONSIDERED A VIOLATION OF THE TERMS AND CONDITIONS OF THE AGREEMENT BETWEEN THE USER AND THE ENGINEER. THE ENGINEER SHALL BE RESPONSIBLE FOR THE PROTECTION OF THIS DRAWING AND THE INFORMATION CONTAINED HEREIN. ANY UNAUTHORIZED DISCLOSURE OR REPRODUCTION OF THIS DRAWING OR ANY PART THEREOF SHALL BE CONSIDERED A VIOLATION OF THE TERMS AND CONDITIONS OF THE AGREEMENT BETWEEN THE USER AND THE ENGINEER. THE ENGINEER SHALL BE RESPONSIBLE FOR THE PROTECTION OF THIS DRAWING AND THE INFORMATION CONTAINED HEREIN. ANY UNAUTHORIZED DISCLOSURE OR REPRODUCTION OF THIS DRAWING OR ANY PART THEREOF SHALL BE CONSIDERED A VIOLATION OF THE TERMS AND CONDITIONS OF THE AGREEMENT BETWEEN THE USER AND THE ENGINEER. THE ENGINEER SHALL BE RESPONSIBLE FOR THE PROTECTION OF THIS DRAWING AND THE INFORMATION CONTAINED HEREIN. ANY UNAUTHORIZED DISCLOSURE OR REPRODUCTION OF THIS DRAWING OR ANY PART THEREOF SHALL BE CONSIDERED A VIOLATION OF THE TERMS AND CONDITIONS OF THE AGREEMENT BETWEEN THE USER AND THE ENGINEER. THE ENGINEER SHALL BE RESPONSIBLE FOR THE PROTECTION OF THIS DRAWING AND THE INFORMATION CONTAINED HEREIN. ANY UNAUTHORIZED DISCLOSURE OR REPRODUCTION OF THIS DRAWING OR ANY PART THEREOF SHALL BE CONSIDERED A VIOLATION OF THE TERMS AND CONDITIONS OF THE AGREEMENT BETWEEN THE USER AND THE ENGINEER. THE ENGINEER SHALL BE RESPONSIBLE FOR THE PROTECTION OF THIS DRAWING AND THE INFORMATION CONTAINED HEREIN. ANY UNAUTHORIZED DISCLOSURE OR REPRODUCTION OF THIS DRAWING OR ANY PART THEREOF SHALL BE CONSIDERED A VIOLATION OF THE TERMS AND CONDITIONS OF THE AGREEMENT BETWEEN THE USER AND THE ENGINEER. THE ENGINEER SHALL BE RESPONSIBLE FOR THE PROTECTION OF THIS DRAWING AND THE INFORMATION CONTAINED HEREIN. ANY UNAUTHORIZED DISCLOSURE OR REPRODUCTION OF THIS DRAWING OR ANY PART THEREOF SHALL BE CONSIDERED A VIOLATION OF THE TERMS AND CONDITIONS OF THE AGREEMENT BETWEEN THE USER AND THE ENGINEER. THE ENGINEER SHALL BE RESPONSIBLE FOR THE PROTECTION OF THIS DRAWING AND THE INFORMATION CONTAINED HEREIN. ANY UNAUTHORIZED DISCLOSURE OR REPRODUCTION OF THIS DRAWING OR ANY PART THEREOF SHALL BE CONSIDERED A VIOLATION OF THE TERMS AND CONDITIONS OF THE AGREEMENT BETWEEN THE USER AND THE ENGINEER. THE ENGINEER SHALL BE RESPONSIBLE FOR THE PROTECTION OF THIS DRAWING AND THE INFORMATION CONTAINED HEREIN. ANY UNAUTHORIZED DISCLOSURE OR REPRODUCTION OF THIS DRAWING OR ANY PART THEREOF SHALL BE CONSIDERED A VIOLATION OF THE TERMS AND CONDITIONS OF THE AGREEMENT BETWEEN THE USER AND THE ENGINEER. THE ENGINEER SHALL BE RESPONSIBLE FOR THE PROTECTION OF THIS DRAWING AND THE INFORMATION CONTAINED HEREIN. ANY UNAUTHORIZED DISCLOSURE OR REPRODUCTION OF THIS DRAWING OR ANY PART THEREOF SHALL BE CONSIDERED A VIOLATION OF THE TERMS AND CONDITIONS OF THE AGREEMENT BETWEEN THE USER AND THE ENGINEER. THE ENGINEER SHALL BE RESPONSIBLE FOR THE PROTECTION OF THIS DRAWING AND THE INFORMATION CONTAINED HEREIN. ANY UNAUTHORIZED DISCLOSURE OR REPRODUCTION OF THIS DRAWING OR ANY PART THEREOF SHALL BE CONSIDERED A VIOLATION OF THE TERMS AND CONDITIONS OF THE AGREEMENT BETWEEN THE USER AND THE ENGINEER. THE ENGINEER SHALL BE RESPONSIBLE FOR THE PROTECTION OF THIS DRAWING AND THE INFORMATION CONTAINED HEREIN. ANY UNAUTHORIZED DISCLOSURE OR REPRODUCTION OF THIS DRAWING OR ANY PART THEREOF SHALL BE CONSIDERED A VIOLATION OF THE TERMS AND CONDITIONS OF THE AGREEMENT BETWEEN THE USER AND THE ENGINEER. THE ENGINEER SHALL BE RESPONSIBLE FOR THE PROTECTION OF THIS DRAWING AND THE INFORMATION CONTAINED HEREIN. ANY UNAUTHORIZED DISCLOSURE OR REPRODUCTION OF THIS DRAWING OR ANY PART THEREOF SHALL BE CONSIDERED A VIOLATION OF THE TERMS AND CONDITIONS OF THE AGREEMENT BETWEEN THE USER AND THE ENGINEER. THE ENGINEER SHALL BE RESPONSIBLE FOR THE PROTECTION OF THIS DRAWING AND THE INFORMATION CONTAINED HEREIN. ANY UNAUTHORIZED DISCLOSURE OR REPRODUCTION OF THIS DRAWING OR ANY PART THEREOF SHALL BE CONSIDERED A VIOLATION OF THE TERMS AND CONDITIONS OF THE AGREEMENT BETWEEN THE USER AND THE ENGINEER. THE ENGINEER SHALL BE RESPONSIBLE FOR THE PROTECTION OF THIS DRAWING AND THE INFORMATION CONTAINED HEREIN. ANY UNAUTHORIZED DISCLOSURE OR REPRODUCTION OF THIS DRAWING OR ANY PART THEREOF SHALL BE CONSIDERED A VIOLATION OF THE TERMS AND CONDITIONS OF THE AGREEMENT BETWEEN THE USER AND THE ENGINEER. THE ENGINEER SHALL BE RESPONSIBLE FOR THE PROTECTION OF THIS DRAWING AND THE INFORMATION CONTAINED HEREIN. ANY UNAUTHORIZED DISCLOSURE OR REPRODUCTION OF THIS DRAWING OR ANY PART THEREOF SHALL BE CONSIDERED A VIOLATION OF THE TERMS AND CONDITIONS OF THE AGREEMENT BETWEEN THE USER AND THE ENGINEER. THE ENGINEER SHALL BE RESPONSIBLE FOR THE PROTECTION OF THIS DRAWING AND THE INFORMATION CONTAINED HEREIN. ANY UNAUTHORIZED DISCLOSURE OR REPRODUCTION OF THIS DRAWING OR ANY PART THEREOF SHALL BE CONSIDERED A VIOLATION OF THE TERMS AND CONDITIONS OF THE AGREEMENT BETWEEN THE USER AND THE ENGINEER. THE ENGINEER SHALL BE RESPONSIBLE FOR THE PROTECTION OF THIS DRAWING AND THE INFORMATION CONTAINED HEREIN. ANY UNAUTHORIZED DISCLOSURE OR REPRODUCTION OF THIS DRAWING OR ANY PART THEREOF SHALL BE CONSIDERED A VIOLATION OF THE TERMS AND CONDITIONS OF THE AGREEMENT BETWEEN THE USER AND THE ENGINEER. THE ENGINEER SHALL BE RESPONSIBLE FOR THE PROTECTION OF THIS DRAWING AND THE INFORMATION CONTAINED HEREIN. ANY UNAUTHORIZED DISCLOSURE OR REPRODUCTION OF THIS DRAWING OR ANY PART THEREOF SHALL BE CONSIDERED A VIOLATION OF THE TERMS AND CONDITIONS OF THE AGREEMENT BETWEEN THE USER AND THE ENGINEER. THE ENGINEER SHALL BE RESPONSIBLE FOR THE PROTECTION OF THIS DRAWING AND THE INFORMATION CONTAINED HEREIN. ANY UNAUTHORIZED DISCLOSURE OR REPRODUCTION OF THIS DRAWING OR ANY PART THEREOF SHALL
BE CONSIDERED A VIOLATION OF THE TERMS AND CONDITIONS OF THE AGREEMENT BETWEEN THE USER AND THE ENGINEER. THE ENGINEER SHALL BE RESPONSIBLE FOR THE PROTECTION OF THIS DRAWING AND THE INFORMATION CONTAINED HEREIN. ANY UNAUTHORIZED DISCLOSURE OR REPRODUCTION OF THIS DRAWING OR ANY PART THEREOF SHALL BE CONSIDERED A VIOLATION OF THE TERMS AND CONDITIONS OF THE AGREEMENT BETWEEN THE USER AND THE ENGINEER. THE ENGINEER SHALL BE RESPONSIBLE FOR THE PROTECTION OF THIS DRAWING AND THE INFORMATION CONTAINED HEREIN. ANY UNAUTHORIZED DISCLOSURE OR REPRODUCTION OF THIS DRAWING OR ANY PART THEREOF SHALL BE CONSIDERED A VIOLATION OF THE TERMS AND CONDITIONS OF THE AGREEMENT BETWEEN THE USER AND THE ENGINEER. THE ENGINEER SHALL BE RESPONSIBLE FOR THE PROTECTION OF THIS DRAWING AND THE INFORMATION CONTAINED HEREIN. ANY UNAUTHORIZED DISCLOSURE OR REPRODUCTION OF THIS DRAWING OR ANY PART THEREOF SHALL BE CONSIDERED A VIOLATION OF THE TERMS AND CONDITIONS OF THE AGREEMENT BETWEEN THE USER AND THE ENGINEER. THE ENGINEER SHALL BE RESPONSIBLE FOR THE PROTECTION OF THIS DRAWING AND THE INFORMATION CONTAINED HEREIN. ANY UNAUTHORIZED DISCLOSURE OR REPRODUCTION OF THIS DRAWING OR ANY PART THEREOF SHALL BE CONSIDERED A VIOLATION OF THE TERMS AND CONDITIONS OF THE AGREEMENT BETWEEN THE USER AND THE ENGINEER. THE ENGINEER SHALL BE RESPONSIBLE FOR THE PROTECTION OF THIS DRAWING AND THE INFORMATION CONTAINED HEREIN. ANY UNAUTHORIZED DISCLOSURE OR REPRODUCTION OF THIS DRAWING OR ANY PART THEREOF SHALL BE CONSIDERED A VIOLATION OF THE TERMS AND CONDITIONS OF THE AGREEMENT BETWEEN THE USER AND THE ENGINEER. THE ENGINEER SHALL BE RESPONSIBLE FOR THE PROTECTION OF THIS DRAWING AND THE INFORMATION CONTAINED HEREIN. ANY UNAUTHORIZED DISCLOSURE OR REPRODUCTION OF THIS DRAWING OR ANY PART THEREOF SHALL BE CONSIDERED A VIOLATION OF THE TERMS AND CONDITIONS OF THE AGREEMENT BETWEEN THE USER AND THE ENGINEER. THE ENGINEER SHALL BE RESPONSIBLE FOR THE PROTECTION OF THIS DRAWING AND THE INFORMATION CONTAINED HEREIN. ANY UNAUTHORIZED DISCLOSURE OR REPRODUCTION OF THIS DRAWING OR ANY PART THEREOF SHALL BE CONSIDERED A VIOLATION OF THE TERMS AND CONDITIONS OF THE AGREEMENT BETWEEN THE USER AND THE ENGINEER. THE ENGINEER SHALL BE RESPONSIBLE FOR THE PROTECTION OF THIS DRAWING AND THE INFORMATION CONTAINED HEREIN. ANY UNAUTHORIZED DISCLOSURE OR REPRODUCTION OF THIS DRAWING OR ANY PART THEREOF SHALL BE CONSIDERED A VIOLATION OF THE TERMS AND CONDITIONS OF THE AGREEMENT BETWEEN THE USER AND THE ENGINEER. THE ENGINEER SHALL BE RESPONSIBLE FOR THE PROTECTION OF THIS DRAWING AND THE INFORMATION CONTAINED HEREIN. ANY UNAUTHORIZED DISCLOSURE OR REPRODUCTION OF THIS DRAWING OR ANY PART THEREOF SHALL BE CONSIDERED A VIOLATION OF THE TERMS AND CONDITIONS OF THE AGREEMENT BETWEEN THE USER AND THE ENGINE |  |  |  |



1  
E-140.00 LIGHTING PLAN DC HALL 1 OF 2  
1/8" = 1'-0"

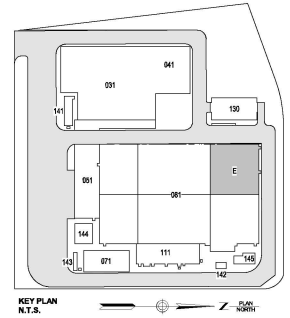
#### ELECTRICAL GENERAL NOTES

1. REFER TO SHEET E-001 FOR GENERAL NOTES.
2. SEE ARCHITECTURAL PLANS FOR WALL AND DOOR DETAILS.
3. SEE MECHANICAL PLANS FOR VENTILATION DUCT DETAILS.
4. ALL WIRES TO FEED LIGHTS SHALL BE 2#10-#12G IN 3/4" RAC UNLESS STATED OTHERWISE.
5. LIGHT SWITCHES ARE NOT SHOWN TO SCALE.

#### ELECTRICAL KEYNOTES

1. INSTALL P1 HIGH BAY LED FIXTURES SUSPENDED FROM CEILING 48" AFF. FOR DC HALL FLOOR.

ISSUED FOR PERMIT



**E** Engineering and  
Land Surveying, P.C. 370 7th Avenue  
Suite 1804  
New York, NY 10001

**SOWINSKI SULLIVAN** 25 Mechanic Avenue  
Sparks, NJ 07871

#### CONFIDENTIAL

THIS DRAWING IS CONFIDENTIAL. IN WHOLE OR IN PART, ANY REUSE OR REPRODUCTION OF THE DRAWING OR ANY PART THEREOF WITHOUT THE WRITTEN PERMISSION OF THE ENGINEER OR ARCHITECT IS STRICTLY PROHIBITED. THE USER OF THIS DRAWING SHALL BE RESPONSIBLE FOR OBTAINING THE NECESSARY PERMISSIONS FROM THE ENGINEER OR ARCHITECT. THE USER SHALL BE RESPONSIBLE FOR OBTAINING THE NECESSARY PERMISSIONS FROM THE ENGINEER OR ARCHITECT. THE USER SHALL BE RESPONSIBLE FOR OBTAINING THE NECESSARY PERMISSIONS FROM THE ENGINEER OR ARCHITECT.

REV	DESCRIPTION	CHK BY	DATE
B	100% SUBMISSION	S. HILF	12/13/2022
A	INTERIM SUBMISSION	N. WU	08/13/2022

**Kiewit** 478 Chestnut Ridge Rd # 2,  
Woodcliff Lake, NJ 07877

**Hitachi Energy** 901 Main Campus Drive  
Raleigh, North Carolina 27606

**PROJECT**

**CHPE**  
Champlain Hudson  
Power Express

**Astoria HVDC  
Converter Station**  
31-45 20th Avenue, Astoria, Queens NY 11105  
Block #850 - Lot #310 - BIN #4624437

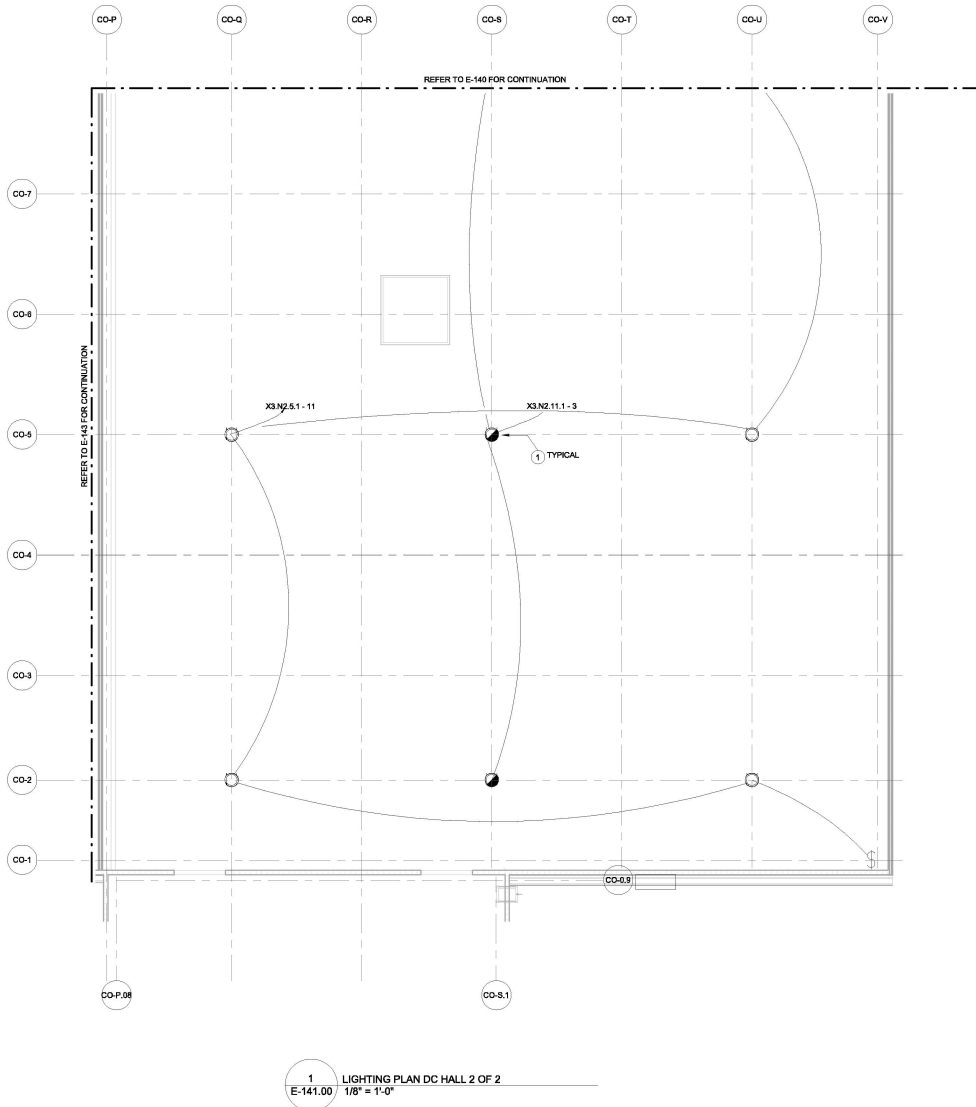
**CONVERTER BUILDING DC  
HALL LIGHTING  
PLAN (1 OF 2)**

**STATE OF NEW YORK**

**Professional Engineer**

DATE: 12/13/2022  
INQUIRY NO: 100121  
DRAWING BY: S. HILF  
CHECKED BY: D. DUZEN  
DRAWING NO: E-140.00  
CADD FILE NO: E-140.00  
AUTOCAD VERSION: 2014

WARNING - IT IS A VIOLATION, OF THE NEW YORK STATE EDUCATION LAW, SECTION 2209.2 FOR ANY PERSON, UNLESS SHE OR HE IS ACTING UNDER THE DIRECTION OF A LICENSED PROFESSIONAL ENGINEER OR REGISTERED ARCHITECT, TO ALTER THIS DOCUMENT IN ANY WAY. IF ALTERED, THE ALTERING PERSON SHALL COMPLY WITH THE REQUIREMENTS OF NEW YORK EDUCATION LAW, SECTION 2209.2.



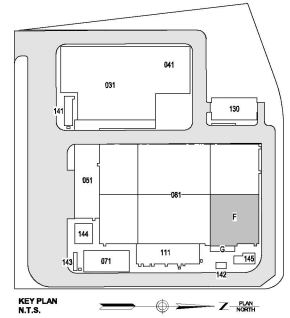
#### ELECTRICAL GENERAL NOTES

1. REFER TO SHEET E-001 FOR GENERAL NOTES
2. SEE ARCHITECTURAL PLANS FOR WALL AND DOOR DETAILS.
3. SEE MECHANICAL PLANS FOR VENTILATION DUCT DETAILS.
4. ALL WIRES TO FEED LIGHTS SHALL BE 2#10-#12G IN 3/4" RAC UNLESS STATED OTHERWISE.
5. LIGHT SWITCHES ARE NOT SHOWN TO SCALE.

#### ELECTRICAL KEYNOTES

1. INSTALL P1 HIGH BAY LED FIXTURES SUSPENDED FROM CEILING 45' AFF. FOR DC HALL FLOOR.

#### ISSUED FOR PERMIT



**Engineering and Land Surveying, P.C.**  
370 7th Avenue  
SUITE 1804  
New York, NY 10001

**SOWINSKI SULLIVAN**  
25 Mechanics Avenue  
Sparta, NJ 07871

#### CONFIDENTIAL

THIS DRAWING IS CONFIDENTIAL. IN WHOLE OR IN PART, ANY REUSE OR UNAUTHORIZED DISTRIBUTION OF THE DRAWING OR ANY PART THEREOF, OR THE DISCLOSURE OF THE CONTENTS OF THE DRAWING TO ANY OTHER PERSON, WITHOUT THE WRITTEN PERMISSION OF THE ENGINEER OR ARCHITECT, IS STRICTLY PROHIBITED. ANY SUCH REUSE OR DISTRIBUTION, OR DISCLOSURE, SHALL BE AT THE USER'S SOLE RISK AND WITHOUT LIABILITY TO THE ENGINEER OR ARCHITECT. ANY SUCH REUSE OR DISTRIBUTION, OR DISCLOSURE, SHALL BE AT THE USER'S SOLE RISK AND WITHOUT LIABILITY TO THE ENGINEER OR ARCHITECT.

REV	DESCRIPTION	CHK BY	DATE
B	100% SUBMISSION	S. HILF	12/13/2022
A	INTERIM SUBMISSION	N. WU	08/13/2022

**Kiewit**  
470 Chestnut Ridge Rd # 2  
Woodcliff Lake, NJ 07877

**Hitachi Energy**  
901 Main Campus Drive  
Raleigh, North Carolina 27608

**PROJECT**

**CHPE**  
Champlain Hudson PowerExpress

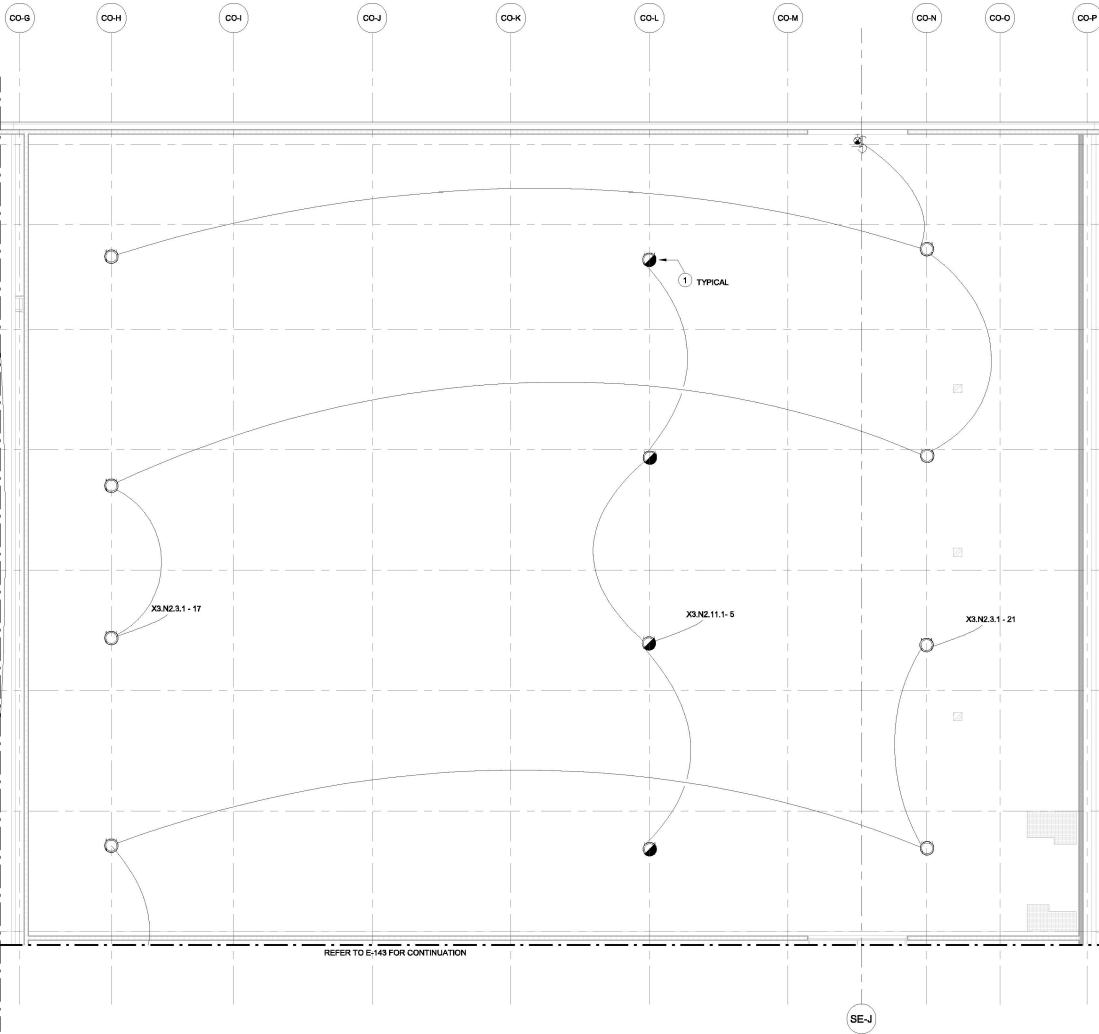
**Astoria HVDC Converter Station**  
31-45 20th Avenue, Astoria, Queens NY 11105  
Block #850 - Lot #310 - BIN #4624437

**CONVERTER BUILDING DC HALL LIGHTING PLAN (2 OF 2)**

**DATE** 12/13/2022  
**INQUIRY NO** 100121  
**DRAWING BY** S. HILF  
**CHECKED BY** D. J. JEN  
**DRAWING NO** E-141.00  
**CADD FILE NO** E-141.00  
**DATE OF ISSUE** 12/13/2022

WARNING - IT IS A VIOLATION, OF THE NEW YORK STATE EDUCATION LAW, SECTION 2209.2, FOR ANY PERSON, UNLESS SHE OR HE IS ACTING UNDER THE DIRECTION OF A LICENSED PROFESSIONAL ENGINEER OR REGISTERED ARCHITECT, TO ALTER THIS DOCUMENT IN ANY WAY. IF ALTERED, THE ALTERING PERSON SHALL COMPLY WITH THE REQUIREMENTS OF NEW YORK EDUCATION LAW, SECTION 2209.2.





1 LIGHTING PLAN POSITIVE VALVE HALL  
E-142.00  
1/8" = 1'-0"

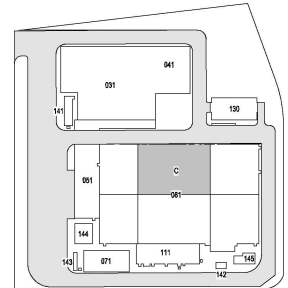
**ELECTRICAL GENERAL NOTES**

1. REFER TO SHEET E-001 FOR GENERAL NOTES
2. SEE ARCHITECTURAL PLANS FOR WALL AND DOOR DETAILS.
3. SEE MECHANICAL PLANS FOR VENTILATION DUCT DETAILS.
4. ALL WIRES TO FEED LIGHTS SHALL BE 2#10+#12G IN 3/4" RAC UNLESS STATED OTHERWISE.
5. LIGHT SWITCHES ARE NOT SHOWN TO SCALE.

**ELECTRICAL KEYNOTES**

1. INSTALL P1 HIGH BAY LED FIXTURES SUSPENDED FROM CEILING 45' AFF. FOR VALVE HALL FLOOR.

ISSUED FOR PERMIT



KEY PLAN  
N.T.S.

**Engineering and Land Surveying, P.C.**  
370 7th Avenue  
SUITE 1804  
New York, NY 10001

**SOWINSKI SULLIVAN**  
25 Mechanic Avenue  
Sparta, NJ 07871

CONFIDENTIAL

THIS DRAWING IS CONFIDENTIAL. ANY REUSE OR UNAUTHORIZED DISTRIBUTION OF THE DRAWING OR ANY PART THEREOF WITHOUT THE WRITTEN PERMISSION OF SOWINSKI SULLIVAN SHALL BE A VIOLATION OF THE PROFESSIONAL ENGINEERING ETHICS ACT AND MAY BE SUBJECT TO PENALTY. THE USER OF THIS DRAWING SHALL BE RESPONSIBLE FOR OBTAINING THE NECESSARY PERMISSIONS FROM THE APPROPRIATE PARTIES. THE USER SHALL BE RESPONSIBLE FOR OBTAINING THE NECESSARY PERMISSIONS FROM THE APPROPRIATE PARTIES. THE USER SHALL BE RESPONSIBLE FOR OBTAINING THE NECESSARY PERMISSIONS FROM THE APPROPRIATE PARTIES.

REV	DESCRIPTION	CHK BY	DATE
B	100% SUBMISSION	S. HULICA	12/13/2022
A	INTERIM SUBMISSION	N. WU	08/13/2022

**Kiewit**  
470 Chestnut Ridge Rd # 2  
Woodcliff Lake, NJ 07877

**Hitachi Energy**  
901 Main Campus Drive  
Raleigh, North Carolina 27606

**PROJECT**

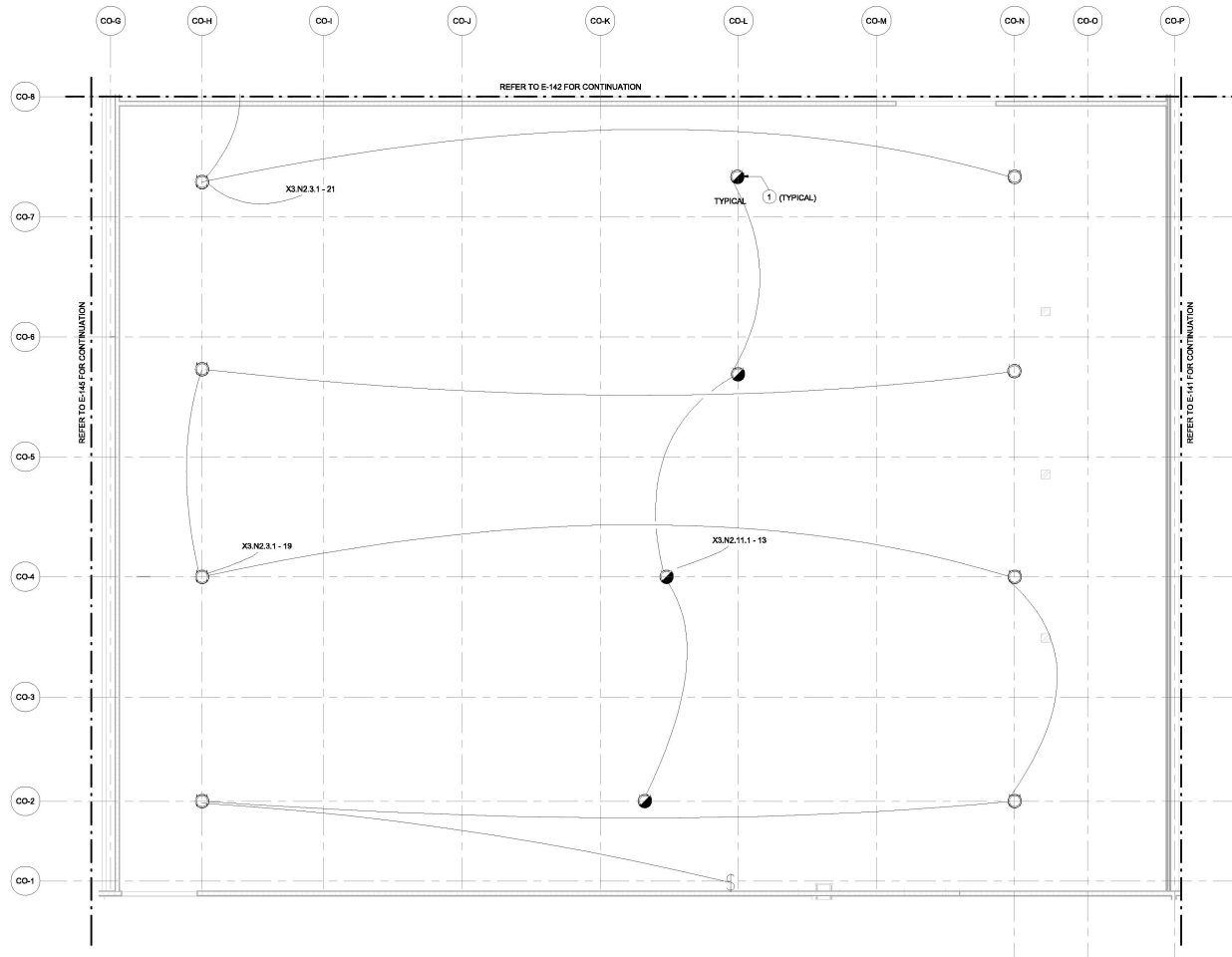
**CHPE**  
Champlain Hudson PowerExpress

**Astoria HVDC Converter Station**  
31-45 20th Avenue, Astoria, Queens NY 11105  
Block #850 - Lot #310 - BIN #4624437

**CONVERTER BUILDING POSITIVE VALVE HALL LIGHTING PLAN**

DATE: 12/13/2022  
INQUIRY NO: 169121  
DRAWING BY: S. HULICA  
CHECKED BY: D. DUZEN  
DRAWING NO: E-142.00  
CADD FILE NO: E-142.00.dwg  
AUTOCAD VERSION: 2014

WARNING - IT IS A VIOLATION OF THE NEW YORK STATE EDUCATION LAW, SECTION 7209.2, FOR ANY PERSON, UNLESS SHE OR HE IS ACTING UNDER THE DIRECTION OF A LICENSED PROFESSIONAL ENGINEER OR REGISTERED ARCHITECT, TO ALTER THIS DOCUMENT IN ANY WAY. IF ALTERED, THE ALTERING PERSON SHALL COMPLY WITH THE REQUIREMENTS OF NEW YORK EDUCATION LAW, SECTION 7209.2.



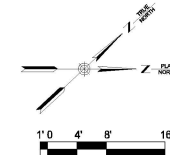
1  
E-143.00 LIGHTING PLAN NEGATIVE VALVE HALL  
1/8" = 1'-0"

#### ELECTRICAL GENERAL NOTES

1. REFER TO SHEET E-001 FOR GENERAL NOTES
2. SEE ARCHITECTURAL PLANS FOR WALL AND DOOR DETAILS.
3. SEE MECHANICAL PLANS FOR VENTILATION DUCT DETAILS.
4. ALL WIRES TO FEED LIGHTS SHALL BE 2010-#120 IN 3/4" RAC UNLESS STATED OTHERWISE.
5. LIGHT SWITCHES ARE NOT SHOWN TO SCALE.

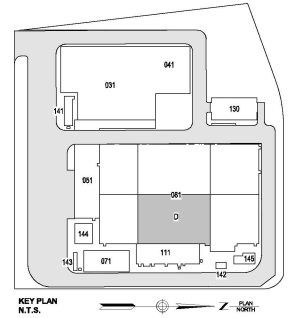
#### ELECTRICAL KEYNOTES

1. INSTALL P1 HIGH BAY LED FIXTURES SUSPENDED FROM CEILING 45' AFF. FOR VALVE HALL FLOOR.



WARNING - IT IS A VIOLATION OF THE NEW YORK STATE EDUCATION LAW, SECTION 7209.2, FOR ANY PERSON, UNLESS SHE OR HE IS ACTING UNDER THE DIRECTION OF A LICENSED PROFESSIONAL ENGINEER OR REGISTERED ARCHITECT, TO ALTER THIS DOCUMENT IN ANY WAY. IF ALTERED, THE ALTERING PERSON SHALL COMPLY WITH THE REQUIREMENTS OF NEW YORK EDUCATION LAW, SECTION 7209.2.

ISSUED FOR PERMIT



KEY PLAN  
N.T.S.

Engineering and  
Land Surveying, P.C.

370 7th Avenue  
SUITE 1804  
New York, NY 10001

SOWINSKI  
SULLIVAN

25 Mechanics Avenue  
Sparks, NJ 07871

#### CONFIDENTIAL

THIS DRAWING IS CONFIDENTIAL IN NATURE. ANY REUSE OR UNAUTHORIZED DISTRIBUTION OF THE DRAWING OR ANY PART THEREOF SHALL BE A VIOLATION OF THE PROFESSIONAL ETHICS AND STANDARDS OF THE ENGINEER OR ARCHITECT. THE ENGINEER OR ARCHITECT SHALL BE RESPONSIBLE FOR THE PROTECTION OF THIS DRAWING AND SHALL BE RESPONSIBLE FOR THE PROTECTION OF THE INFORMATION CONTAINED HEREIN. THE ENGINEER OR ARCHITECT SHALL BE RESPONSIBLE FOR THE PROTECTION OF THE INFORMATION CONTAINED HEREIN. THE ENGINEER OR ARCHITECT SHALL BE RESPONSIBLE FOR THE PROTECTION OF THE INFORMATION CONTAINED HEREIN.

REV	DESCRIPTION	CHK BY	DATE
B	100% SUBMISSION	S. HILFEA	12/13/2022
A	INTERIM SUBMISSION	N. MUJ	08/13/2022

**Kiewit**  
478 Chestnut Ridge Rd # 2,  
Woodcliff Lake, NJ 07877

**Hitachi Energy**  
901 Main Campus Drive  
Raleigh, North Carolina 27606

PROJECT  
**CHPE**  
Chempoint Hydrant  
PowerExpress

**Astoria HVDC  
Converter Station**  
31-45 20th Avenue, Astoria, Queens NY 11105  
Block #850 - Lot #310 - BIN #4624437

**CONVERTER BUILDING  
NEGATIVE VALVE HALL  
LIGHTING PLAN**

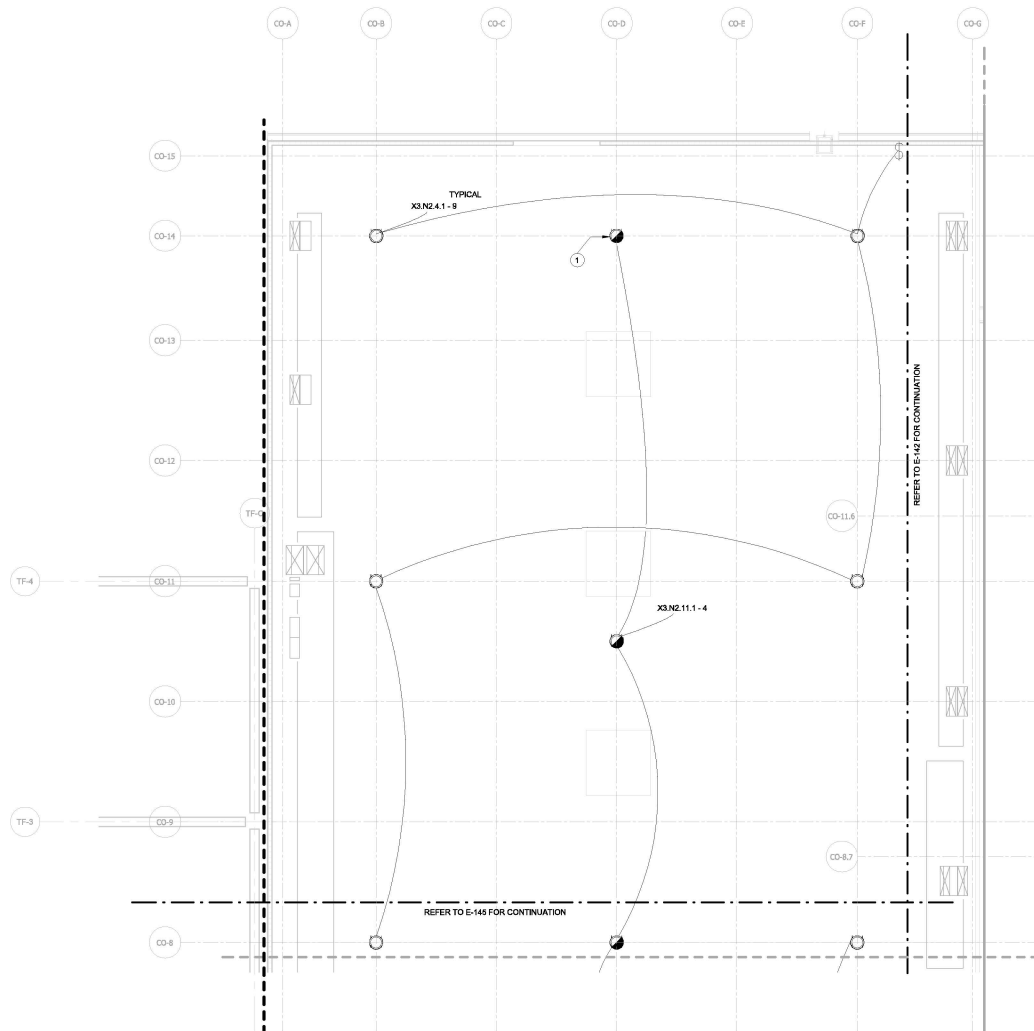


DATE: 12/13/2022  
INQUIRY NO: 100121  
DRAWING BY: S. HILFEA  
CHECKED BY: D. DUZEN  
DRAWING NO:

**E-143.00**

CADD FILE NO:  
AUTOCAD 2013 LAYOUT: E-143.00

12/21/2022 10:38:01 AM



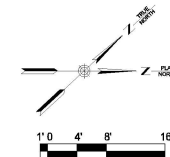
1  
E-144.00 1/8" = 1'-0"

#### ELECTRICAL GENERAL NOTES

1. REFER TO SHEET E-001 FOR GENERAL NOTES.
2. SEE ARCHITECTURAL PLANS FOR WALL AND DOOR DETAILS.
3. SEE MECHANICAL PLANS FOR VENTILATION DUCT DETAILS.
4. ALL WIRES TO FLOOD LIGHTS SHALL BE 2#10-#12G IN 3/4" RAC UNLESS STATED OTHERWISE.
5. LIGHT SWITCHES ARE NOT SHOWN TO SCALE.

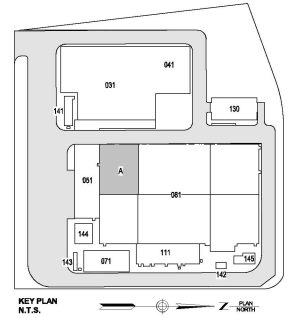
#### ELECTRICAL KEYNOTES

1. INSTALL P1 HIGH BAY LED FIXTURES SUSPENDED FROM CEILING 45' AFF. FOR REACTOR HALL FLOOR.



WARNING - IT IS A VIOLATION, OF THE NEW YORK STATE EDUCATION LAW, SECTION 7209.2, FOR ANY PERSON, UNLESS SHE OR HE IS ACTING UNDER THE DIRECTION OF A LICENSED PROFESSIONAL ENGINEER OR REGISTERED ARCHITECT, TO ALTER THIS DOCUMENT IN ANY WAY. IF ALTERED, THE ALTERING PERSON SHALL COMPLY WITH THE REQUIREMENTS OF NEW YORK EDUCATION LAW, SECTION 7209.2.

ISSUED FOR PERMIT



Engineering and  
Land Surveying, P.C.

370 7th Avenue  
SUITE 1804  
New York, NY 10001

**SOWINSKI  
SULLIVAN**

25 Mechanics Avenue  
Sparta, NJ 07871

CONFIDENTIAL

THIS DRAWING IS CONFIDENTIAL. IN WHOLE OR IN PART, ANY REUSE OR UNAUTHORIZED DISTRIBUTION OF THE DRAWING OR ANY PART THEREOF SHALL BE A VIOLATION OF THE PROFESSIONAL ENGINEERING AND SURVEYING ACT. NO PART OF THIS DRAWING SHALL BE REPRODUCED OR TRANSMITTED IN ANY FORM OR BY ANY MEANS, ELECTRONIC OR MECHANICAL, INCLUDING PHOTOCOPYING, RECORDING, OR BY ANY INFORMATION STORAGE AND RETRIEVAL SYSTEM, WITHOUT THE WRITTEN PERMISSION OF SOWINSKI SULLIVAN. ANY VIOLATION OF THIS NOTICE SHALL BE SUBJECT TO THE PENALTIES PROVIDED BY LAW. NO PART OF THIS DRAWING SHALL BE REPRODUCED OR TRANSMITTED IN ANY FORM OR BY ANY MEANS, ELECTRONIC OR MECHANICAL, INCLUDING PHOTOCOPYING, RECORDING, OR BY ANY INFORMATION STORAGE AND RETRIEVAL SYSTEM, WITHOUT THE WRITTEN PERMISSION OF SOWINSKI SULLIVAN.

REV	DESCRIPTION	CHK BY	DATE
B	100% SUBMISSION	S. SULLIVAN	12/13/2022
A	INTERIM SUBMISSION	N. WU	08/13/2022

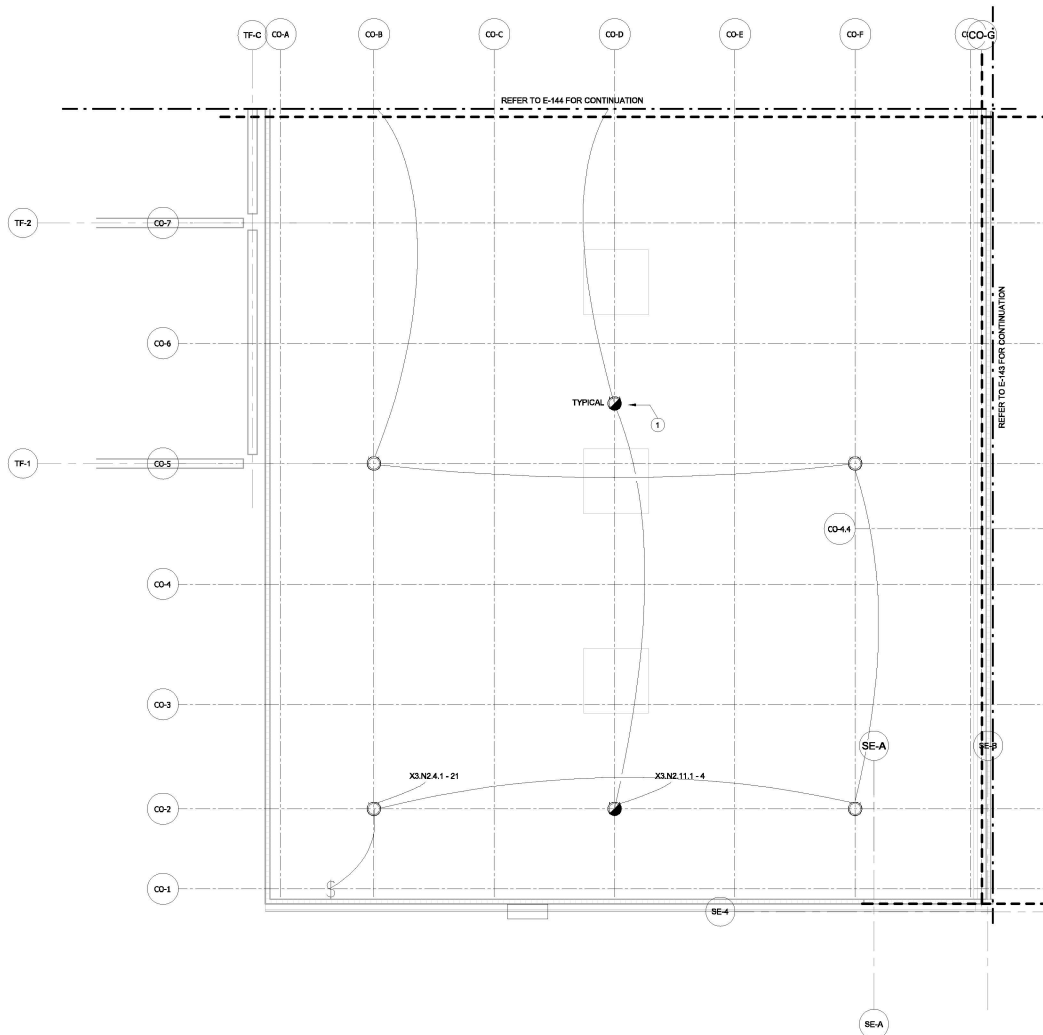
**Kiewit**  
470 Chestnut Ridge Rd # 2,  
Woodcliff Lake, NJ 07877

**Hitachi Energy**  
901 Main Campus Drive  
Raleigh, North Carolina 27606

PROJECT  
**CHPE**  
Chempoint Hydrogen  
PowerExpress  
**Astoria HVDC  
Converter Station**  
31-45 20th Avenue, Astoria, Queens NY 11105  
Block #850 - Lot #310 - BIN #4624437

**CONVERTER BUILDING  
REACTOR HALL LIGHTING  
PLAN (1 OF 2)**

DATE: 12/13/2022  
INQUIRY NO: 100121  
DRAWING BY: S. SULLIVAN  
CHECKED BY: D. SULLIVAN  
DRAWING NO: E-144.00  
CADD FILE NO: E-144.00.dwg  
AUTOCAD VERSION: 2013



1  
E-145.00  
1/8" = 1'-0"

#### ELECTRICAL GENERAL NOTES

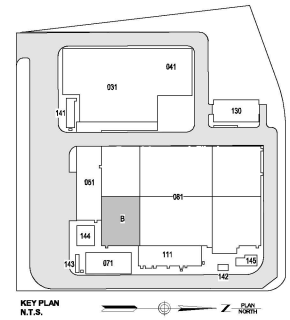
1. REFER TO SHEET E-001 FOR GENERAL NOTES
2. SEE ARCHITECTURAL PLANS FOR WALL AND DOOR DETAILS.
3. SEE MECHANICAL PLANS FOR VENTILATION DUCT DETAILS.
4. ALL WIRES TO FEED LIGHTS SHALL BE 2010-#120 IN 3/4" RAC UNLESS STATED OTHERWISE.
5. LIGHT SWITCHES ARE NOT SHOWN TO SCALE.

#### ELECTRICAL KEYNOTES

1. INSTALL P1 HIGH BAY LED FIXTURES SUSPENDED FROM CEILING 48" AFF. FOR REACTOR HALL FLOOR.

WARNING - IT IS A VIOLATION, OF THE NEW YORK STATE EDUCATION LAW, SECTION 7209.2 FOR ANY PERSON, UNLESS SHE OR HE IS ACTING UNDER THE DIRECTION OF A LICENSED PROFESSIONAL ENGINEER OR REGISTERED ARCHITECT, TO ALTER THIS DOCUMENT IN ANY WAY. IF ALTERED, THE ALTERING PERSON SHALL COMPLY WITH THE REQUIREMENTS OF NEW YORK EDUCATION LAW, SECTION 7209.2.

#### ISSUED FOR PERMIT



**Engineering and Land Surveying, P.C.**  
370 7th Avenue  
SUITE 1804  
New York, NY 10001

**SOWINSKI SULLIVAN**  
25 Mechanic Avenue  
Sparta, NJ 07871

#### CONFIDENTIAL

THIS DRAWING IS THE PROPERTY OF SOWINSKI SULLIVAN. ANY REUSE OR MODIFICATION OF THIS DRAWING WITHOUT THE WRITTEN PERMISSION OF SOWINSKI SULLIVAN IS STRICTLY PROHIBITED. THE USER OF THIS DRAWING SHALL BE RESPONSIBLE FOR OBTAINING ALL NECESSARY PERMITS AND APPROVALS FROM THE APPROPRIATE AGENCIES. NO PART OF THIS DRAWING SHALL BE REPRODUCED OR TRANSMITTED IN ANY FORM OR BY ANY MEANS, ELECTRONIC OR MECHANICAL, INCLUDING PHOTOCOPYING, RECORDING, OR BY ANY INFORMATION STORAGE AND RETRIEVAL SYSTEM, WITHOUT THE WRITTEN PERMISSION OF SOWINSKI SULLIVAN.

REV	DESCRIPTION	CHK BY	DATE
B	100% SUBMISSION	S. HILF	12/15/2022
A	INTERIM SUBMISSION	N. WU	08/13/2022

**Kiewit**  
478 Chestnut Ridge Rd # 2,  
Woodcliff Lake, NJ 07877

**Hitachi Energy**  
901 Main Campus Drive  
Raleigh, North Carolina 27608

**PROJECT**

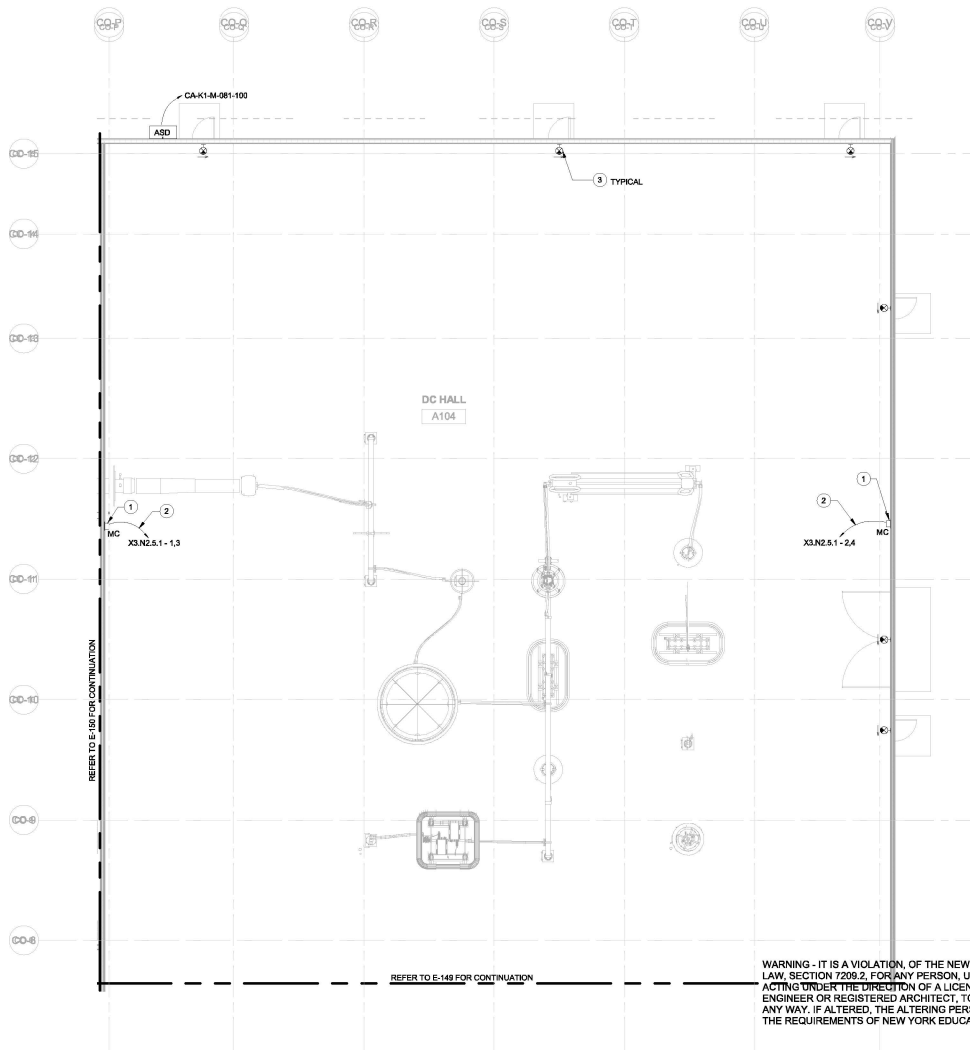
**CHPE**  
Champlain Hudson  
Power Express

**Astoria HVDC Converter Station**  
31-45 20th Avenue, Astoria, Queens NY 11105  
Block #850 - Lot #310 - BIN #4624437

**CONVERTER BUILDING REACTOR HALL LIGHTING PLAN (2 OF 2)**

**STATE OF NEW YORK**  
Professional Engineer  
E-145.00

DATE: 12/13/2022  
INQUIRY NO: 169121  
DRAWING BY: S. HILF  
CHECKED BY: D. DUNN  
DRAWING NO: E-145.00  
CADD FILE NO: E-145.00.dwg  
AUTOCAD VERSION: 2010



1 POWER PLAN DC HALL - 1 OF 2  
E-148.00 1/8" = 1'-0"

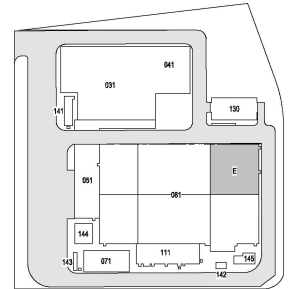
#### ELECTRICAL GENERAL NOTES

1. REFER TO SHEET E-001.00 AND E-002.00 FOR GENERAL NOTES AND ABBREVIATIONS.
2. EACH MODULAR COMBI SHALL BE FED WITH 3#10-#10G IN 3/4" RMC.
3. EXIT SIGNS SHALL BE FED WITH 2#12-#12G IN 3/4" RMC.

#### ELECTRICAL KEYNOTES

1. PROVIDE ABB MODULAR COMBI, MODEL M162, 3P/0 OR SIMILAR, 2 PIECES OF 1 PHASE 120V, 15A SOCKET AND 1 PIECE OF 1 PHASE 240V, 20A SOCKET SHALL BE HOUSED INSIDE. REFER TO E-015 FOR DETAILS.
2. CONDUIT SHALL BE EMBOSSED AND ROUTED UNDER THE BUILDING FLOOR TO THE SOURCE PANEL OUTSIDE.
3. EMERGENCY EXIT WALL PACKS TO BE MOUNTED 1' ABOVE DOOR FRAME.

ISSUED FOR PERMIT



KEY PLAN  
N.T.S.

**Engineering and  
Land Surveying, P.C.** 370 7th Avenue  
SUITE 1804  
New York, NY 10001

**SOWINSKI  
SULLIVAN** 25 Mechanic Avenue  
Sparta, NJ 07871

CONFIDENTIAL  
THIS DRAWING IS CONFIDENTIAL. IN WHOLE OR IN PART, ANY REUSE OR UNAUTHORIZED DISTRIBUTION OF THE DRAWING OR ANY PART THEREOF SHALL BE A VIOLATION OF THE PROFESSIONAL ETHICS AND STANDARDS OF THE ENGINEER OR ARCHITECT. THE USER OF THIS DRAWING SHALL BE RESPONSIBLE FOR OBTAINING THE NECESSARY PERMISSIONS FROM THE APPROPRIATE AUTHORITIES BEFORE REPRODUCING OR DISTRIBUTING THIS DRAWING. NO PART OF THIS DRAWING SHALL BE REPRODUCED OR TRANSMITTED IN ANY FORM OR BY ANY MEANS, ELECTRONIC OR MECHANICAL, INCLUDING PHOTOCOPYING, RECORDING, OR BY ANY INFORMATION STORAGE AND RETRIEVAL SYSTEM, WITHOUT THE WRITTEN PERMISSION OF SOWINSKI SULLIVAN.

REV	DESCRIPTION	DATE
B	100% SUBMISSION	12/13/2022
A	INTERIM SUBMISSION	08/13/2022

**Kiewit** 478 Chestnut Ridge Rd # 2,  
Woodcliff Lake, NJ 07877

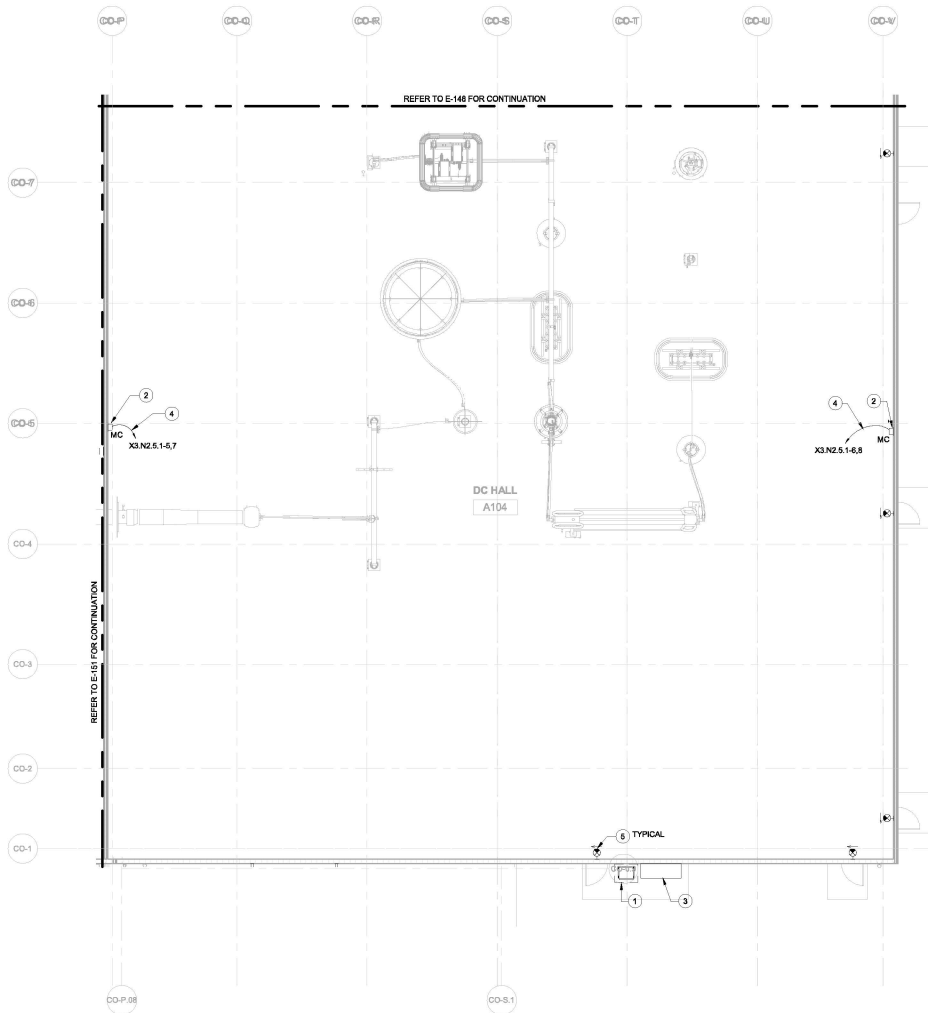
**Hitachi Energy** 901 Main Campus Drive  
Raleigh, North Carolina 27608

PROJECT  
**CHPE**  
Champlain Hudson  
Power Express  
**Astoria HVDC  
Converter Station**  
31-45 20th Avenue, Astoria, Queens NY 11105  
Block #850 - Lot #310 - BIN #4624437

**CONVERTER BUILDING DC  
HALL DEVICE POWER  
PLAN (1 OF 2)**

DATE: 12/13/2022  
INQUIRY NO: 100121  
DRAWING BY: X.L.B.  
CHECKED BY: D.D.B.  
DRAWING NO: E-148.00  
CADD FILE NO: 12/13/2022  
AUTOCAD: 12/13/2022





1  
E-149.00 POWER PLAN DC HALL - 2 OF 2  
1/8" = 1'-0"

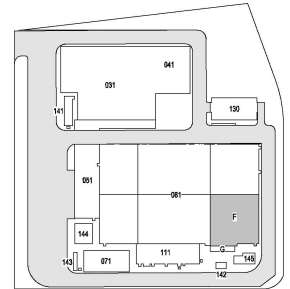
#### ELECTRICAL GENERAL NOTES

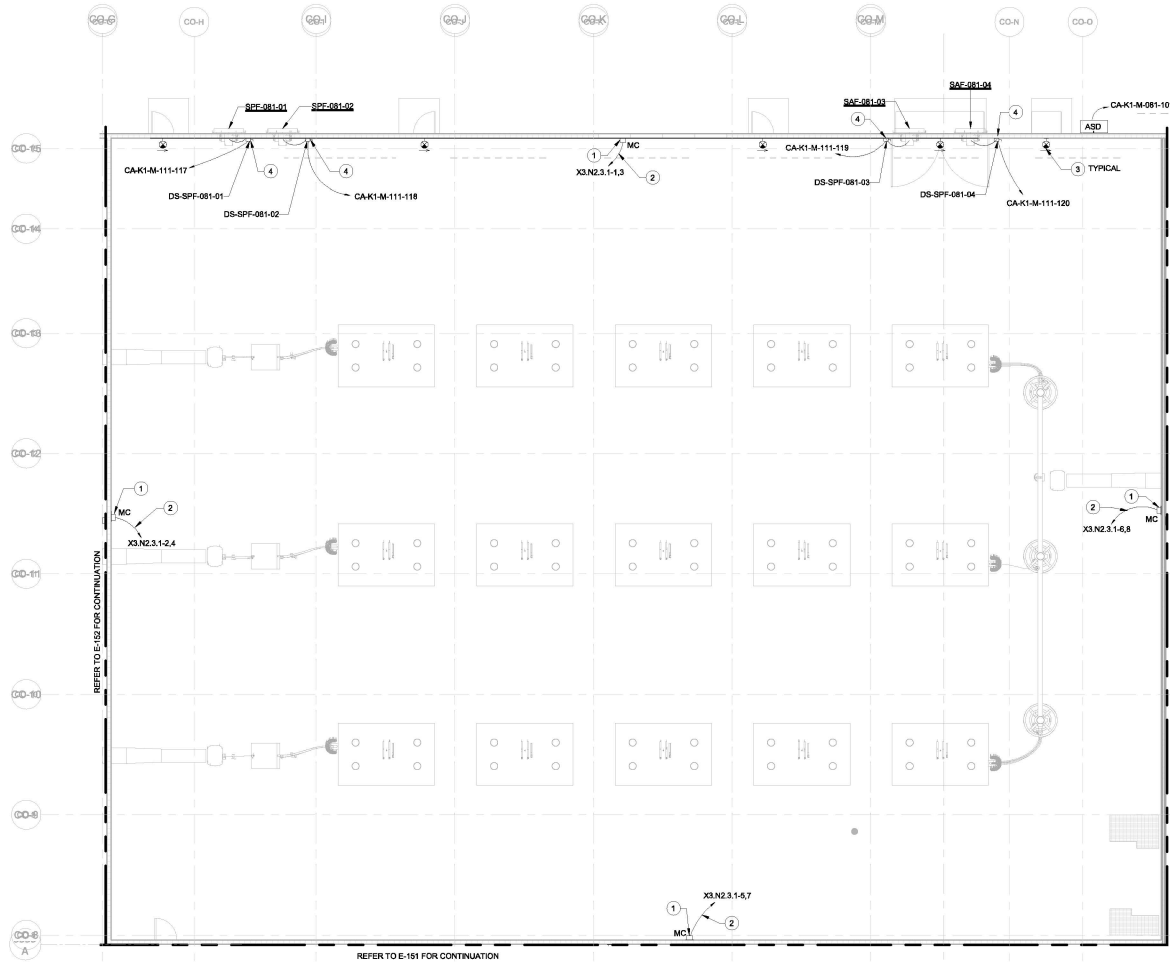
1. REFER TO SHEET E-001.00 AND E-002.00 FOR GENERAL NOTES AND ABBREVIATIONS.
2. EACH MODULAR COMBI SHALL BE FED WITH 3#10-#10G IN 3/4" RMC.
3. EXIT SIGNS SHALL BE FED WITH 2#12-#12G IN 3/4" RMC.

#### ELECTRICAL KEYNOTES

1. PROVIDE MINI-POWER CENTER, TLC-081-X3.NZ.S.1, 480-120/240V, 1 PH, 3W, NEMA 4X ENCLOSURE.
2. PROVIDE ABB MODULAR COMBI, MODEL M162-JPB OR SIMILAR, 2 PIECES OF 1 PHASE, 120V, 15A SOCKET AND 1 PIECE OF 1 PHASE 240V, 20A SOCKET SHALL BE HOUSED INSIDE. REFER TO E-016 FOR DETAILS.
3. PROVIDE LIGHTING CONTROL PANEL WITH NEMA 4X ENCLOSURE. CONDUIT SHALL BE EMBEDDED AND ROUTED UNDER THE BUILDING FLOOR TO THE SOURCE PANEL, OUTSIDE.
5. EMERGENCY EXIT WALL PACKS TO BE MOUNTED 1' ABOVE DOOR FRAME.

#### ISSUED FOR PERMIT





1  
E-150.00  
1/8" = 1'-0"

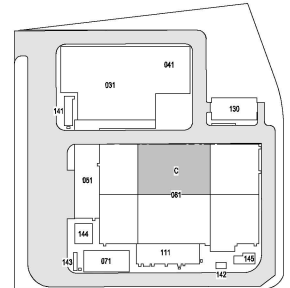
#### ELECTRICAL GENERAL NOTES

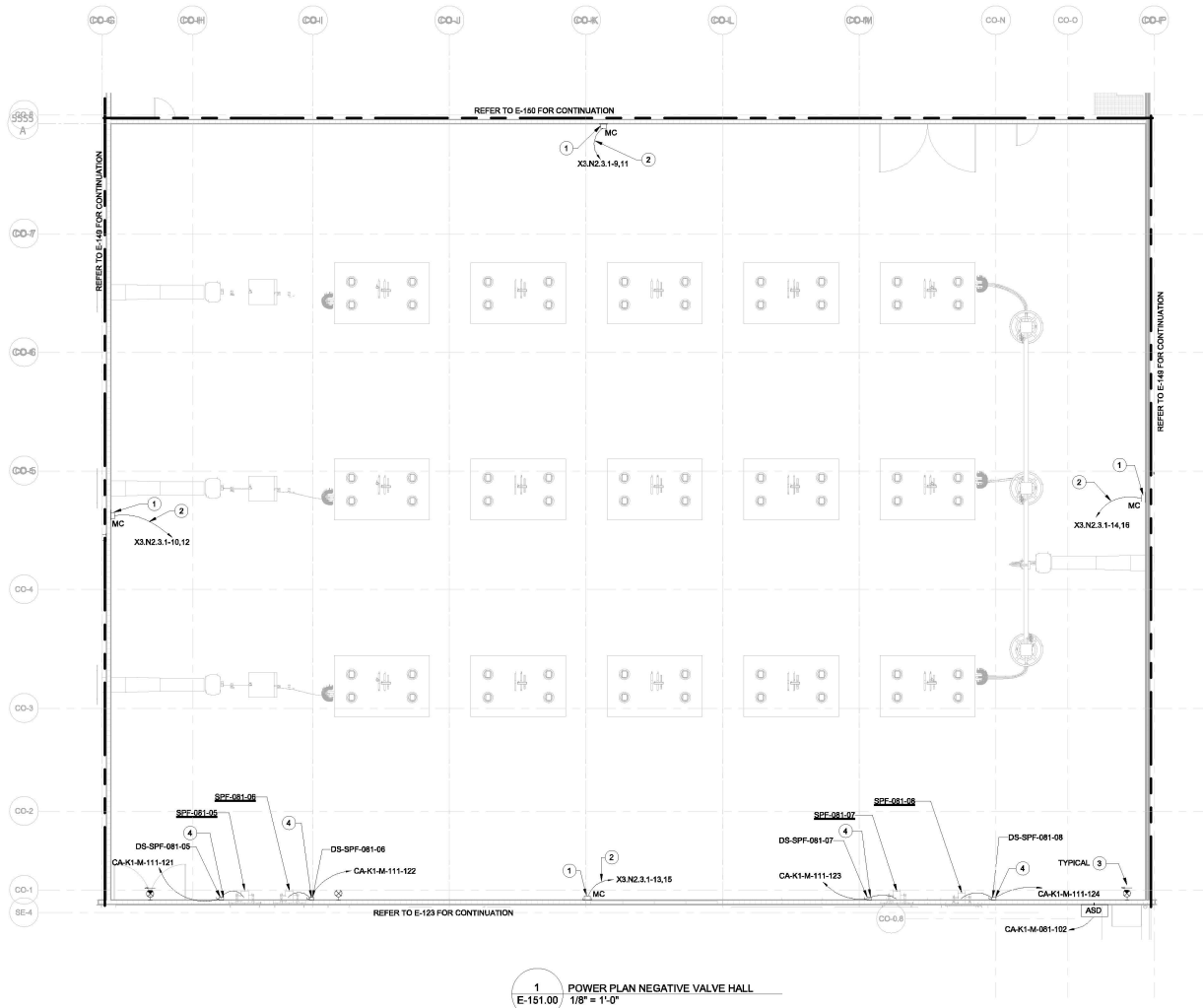
1. REFER TO SHEET E-001.00 AND E-002.00 FOR GENERAL NOTES AND ABBREVIATIONS.
2. EACH MODULAR COMBI SHALL BE FED WITH 3Ø10+Ø10G IN 3/4" RMC.
3. EXIT SIGNS SHALL BE FED WITH 2Ø12+Ø12G IN 3/4" RMC.

#### ELECTRICAL KEYNOTES

1. PROVIDE ABB MODULAR COMBI, MODEL M162 JF8 OR SIMILAR, 2 PIECES OF 1 PHASE 120V, 15A SOCKET AND 1 PIECE OF 1 PHASE 240V, 20A SOCKET SHALL BE HOUSED INSIDE. REFER TO E-615 FOR DETAILS.
2. CONDUIT SHALL BE EMBOSSED AND ROUTED UNDER THE BUILDING FLOOR TO THE SOURCE PANEL OUTSIDE.
3. EMERGENCY EXIT WALL PACKS TO BE MOUNTED 1' ABOVE DOOR FRAME.
4. PROVIDE DISCONNECT SWITCH FOR THE SMOKE PURGE FAN AS SHOWN IN THE PLAN, AND CONNECT THE CIRCUIT TO X1-N2 UC2.MCC. REFER TO E301.00 FOR DETAILS.

#### ISSUED FOR PERMIT

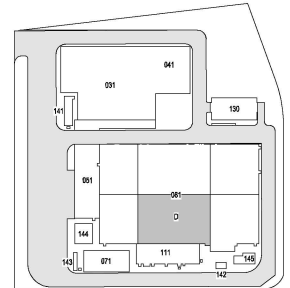


**ELECTRICAL GENERAL NOTES**

1. REFER TO SHEET E-001.00 AND E-002.00 FOR GENERAL NOTES AND ABBREVIATIONS.
2. EACH MODULAR COMBI SHALL BE FED WITH 3#10-#10G IN 3/4" RMC.
3. EXIT SIGNS SHALL BE FED WITH 2#12-#12G IN 3/4" RMC.

**ELECTRICAL KEYNOTES**

1. PROVIDE ABB MODULAR COMBI, MODEL M162 JFB OR SIMILAR, 2 PIECES OF 1 PHASE 120V, 15A SOCKET AND 1 PIECE OF 1 PHASE 240V, 20A SOCKET SHALL BE HOUSED INSIDE. REFER TO E-415 FOR DETAILS.
2. CONDUIT SHALL BE EMBEDDED AND ROUTED UNDER THE BUILDING FLOOR TO THE SOURCE PANEL, OUTSIDE.
3. EMERGENCY EXIT WALL PACKS TO BE MOUNTED 1' ABOVE DOOR FRAME.
4. PROVIDE DISCONNECT SWITCH FOR THE SMOKE PURGE FAN AS SHOWN IN THE PLAN, AND CONNECT THE CIRCUIT TO X1.N2.UC2.MCC. REFER TO E301.00 FOR DETAILS.

**ISSUED FOR PERMIT**

**Engineering and Land Surveying, P.C.**  
370 7th Avenue  
Suite 1604  
New York, NY 10001

**SOWINSKI SULLIVAN**  
25 Mechanics Avenue  
Sparta, NJ 07871

**CONFIDENTIAL**

THIS DRAWING IS CONFIDENTIAL IN NATURE. ANY REUSE OR UNAUTHORIZED DISTRIBUTION OF THE DRAWING OR ANY PART THEREOF SHALL BE A VIOLATION OF THE PROFESSIONAL ETHICS AND SHALL BE SUBJECT TO THE PENALTIES OF THE BOARD OF PROFESSIONAL ENGINEERS AND SURVEYORS OF THE STATE OF NEW YORK. THE USER OF THIS DRAWING SHALL BE RESPONSIBLE FOR OBTAINING ALL NECESSARY PERMITS AND FOR OBTAINING ALL NECESSARY INFORMATION FROM A THIRD PARTY. IF THE USER IS NOT IN AGREEMENT WITH THE OBLIGATION OF CONFIDENTIALITY, THE DRAWING SHALL BE RETURNED TO THE DESIGNER.

REV	DESCRIPTION	CHK BY	DATE
B	100% SUBMISSION	X.L.U.	D.DAUNAN 10/13/2022
A	INTERIM SUBMISSION	N.W.U.	D.DAUNAN 09/13/2022

**Kiewit**  
470 Chestnut Ridge Rd #2,  
Woodcliff Lake, NJ 07877

**Hitachi Energy**  
901 Main Campus Drive  
Raleigh, North Carolina 27606

**PROJECT**

**CHPE**  
Champlain Hudson  
PowerExpress

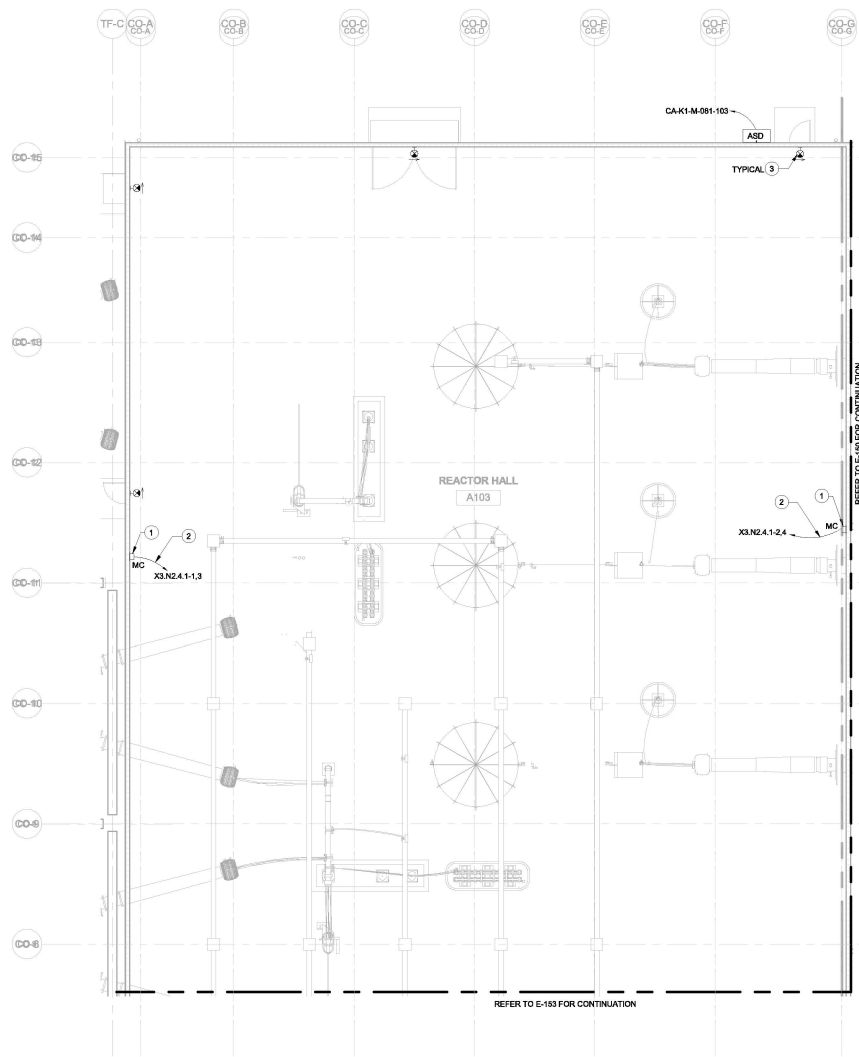
**Astoria HVDC Converter Station**  
31-45 20th Avenue, Astoria, Queens NY 11105  
Block #850 - Lot #310 - BIN #4624437

**CONVERTER BUILDING  
NEGATIVE VALVE HALL  
POWER PLAN**

**STATE OF NEW YORK**  
Professional Engineer  
E-151.00

DATE: 12/13/2022  
INQUIRY NO: 169121  
DRAWING BY: X.L.U.  
CHECKED BY: D.DAUNAN  
DRAWING NO: E-151.00

WARNING - IT IS A VIOLATION OF THE NEW YORK STATE EDUCATION LAW, SECTION 7209.2, FOR ANY PERSON, UNLESS SHE OR HE IS ACTING UNDER THE DIRECTION OF A LICENSED PROFESSIONAL ENGINEER OR REGISTERED ARCHITECT, TO ALTER THIS DOCUMENT IN ANY WAY. IF ALTERED, THE ALTERING PERSON SHALL COMPLY WITH THE REQUIREMENTS OF NEW YORK EDUCATION LAW, SECTION 7209.2.



1 POWER PLAN REACTOR HALL - 1 OF 2  
E-152.00 1/8" = 1'-0"

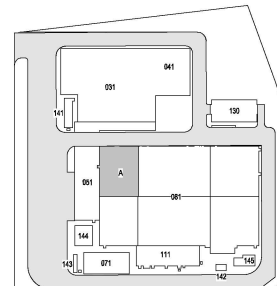
#### ELECTRICAL GENERAL NOTES

1. REFER TO SHEET E-001.00 AND E-002.00 FOR GENERAL NOTES AND ABBREVIATIONS.
2. EACH MODULAR COMBI SHALL BE FED WITH 3/10"X10G IN 3/4" RMC.
3. EXIT SIGNS SHALL BE FED WITH 2/12"X12G IN 3/4" RMC.

#### ELECTRICAL KEYNOTES

1. PROVIDE ABB MODULAR COMBI, MODEL M162 JF8 OR SIMILAR. 2 PIECES OF 1 PHASE 120V, 15A SOCKET AND 1 PIECE OF 1 PHASE 240V, 20A SOCKET SHALL BE HOUSED INSIDE. REFER TO E-615 FOR DETAILS.
2. CONDUIT SHALL BE EMBEDDED AND ROUTED UNDER THE BUILDING FLOOR TO THE SOURCE PANEL OUTSIDE.
3. EMERGENCY EXIT WALL PACKS TO BE MOUNTED 1' ABOVE DOOR FRAME.

ISSUED FOR PERMIT



KEY PLAN  
N.T.S.

Engineering and  
Land Surveying, P.C.

370 7th Avenue  
SUITE 1804  
New York, NY 10001

SOWINSKI  
SULLIVAN

25 Mechanic Avenue  
Sparta, NJ 07871

CONFIDENTIAL

THIS DRAWING IS CONFIDENTIAL IN NATURE. ANY REUSE OR UNAUTHORIZED DISTRIBUTION OF THE DRAWING OR INFORMATION HEREON WILL BE A VIOLATION OF THE PROFESSIONAL ETHICS AND STANDARDS OF THE ENGINEER. THE ENGINEER SHALL BE RESPONSIBLE FOR THE PROTECTION OF THE INFORMATION HEREON. THE ENGINEER SHALL BE RESPONSIBLE FOR THE PROTECTION OF THE INFORMATION HEREON. THE ENGINEER SHALL BE RESPONSIBLE FOR THE PROTECTION OF THE INFORMATION HEREON.

REV	DESCRIPTION	CHK BY	DATE
B	100% SUBMISSION	X.L.U.	01/10/2022
A	INTERIM SUBMISSION	N.W.U.	08/13/2022

**Kiewit**  
478 Chestnut Ridge Rd # 2  
Woodcliff Lake, NJ 07877

**Hitachi Energy**  
801 Main Campus Drive  
Raleigh, North Carolina 27608

PROJECT

**CHPE**  
Champlain Hudson  
Power Express

**Astoria HVDC  
Converter Station**

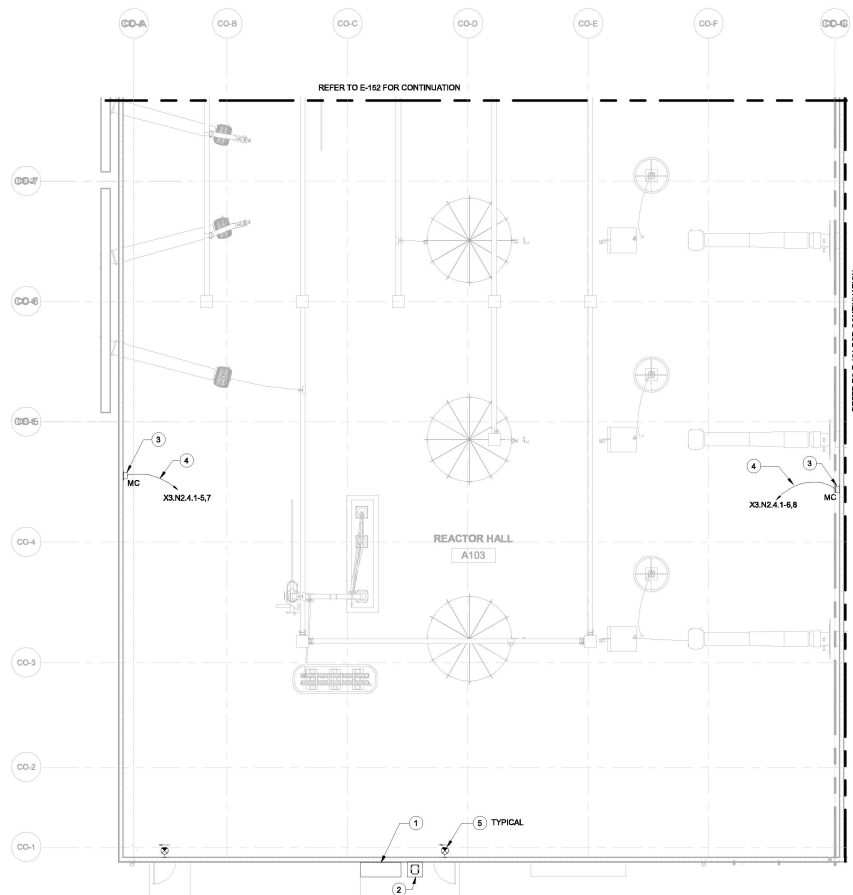
31-45 20th Avenue, Astoria, Queens NY 11105  
Block #850 - Lot #310 - BIN #4624437

**CONVERTER REACTOR  
HALL POWER PLAN (1 OF  
2)**



DATE: 12/13/2022  
INQUIRY NO: 109121  
DRAWING BY: X.L.U.  
CHECKED BY: D.D.ZEN  
DRAWING NO:  
**E-152.00**  
CADD FILE NO:  
AUTOCAD VERSION: 2014

WARNING - IT IS A VIOLATION, OF THE NEW YORK STATE EDUCATION LAW, SECTION 7209.2, FOR ANY PERSON, UNLESS SHE OR HE IS ACTING UNDER THE DIRECTION OF A LICENSED PROFESSIONAL ENGINEER OR REGISTERED ARCHITECT, TO ALTER THIS DOCUMENT IN ANY WAY. IF ALTERED, THE ALTERING PERSON SHALL COMPLY WITH THE REQUIREMENTS OF NEW YORK EDUCATION LAW, SECTION 7209.2.



1 POWER PLAN REACTOR HALL - 2 OF 2  
E-153.00 1/8" = 1'-0"

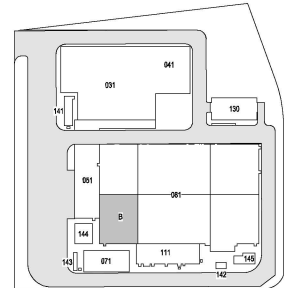
#### ELECTRICAL GENERAL NOTES

1. REFER TO SHEET E-001.00 AND E-002.00 FOR GENERAL NOTES AND ABBREVIATIONS.
2. EACH MODULAR COMBI SHALL BE FED WITH 3Ø10-Ø10G IN 3/4" RMC.
3. EXIT SIGNS SHALL BE FED WITH 2Ø12-Ø12G IN 3/4" RMC.

#### ELECTRICAL KEYNOTES

1. PROVIDE LIGHTING CONTROL PANEL WITH NEMA 4X ENCLOSURE.
2. PROVIDE MINI-POWER CENTER, TLO-081-X3.N2.4.1, 480-120/240V, 1 PH, 3W, NEMA 4X ENCLOSURE.
3. PROVIDE ABB MODULAR COMBI, MODEL M162 JFB OR SIMILAR. 2 PIECES OF 1 PHASE 120V, 15A SOCKET AND 1 PIECE OF 1 PHASE 240V, 20A SOCKET SHALL BE HOUSED INSIDE. REFER TO E-616 FOR DETAILS.
4. CONDUIT SHALL BE EMBEDDED AND ROUTED UNDER THE BUILDING FLOOR TO THE SOURCE PANEL OUTSIDE.
5. EMERGENCY EXIT WALL PACKS TO BE MOUNTED 1' ABOVE DOOR FRAME.

ISSUED FOR PERMIT



KEY PLAN  
N.T.S.

**Engineering and Land Surveying, P.C.**  
370 7th Avenue  
Suite 1804  
New York, NY 10001

**SOWINSKI SULLIVAN**  
25 Mechanics Avenue  
Sparta, NJ 07871

CONFIDENTIAL

THIS DRAWING IS CONFIDENTIAL IN NATURE. ANY REUSE OR UNAUTHORIZED DISTRIBUTION OF THE DRAWING OR ANY PART THEREOF WITHOUT THE WRITTEN PERMISSION OF THE ENGINEER OR ARCHITECT IS STRICTLY PROHIBITED. THE USER OF THIS DRAWING SHALL BE RESPONSIBLE FOR OBTAINING THE NECESSARY PERMISSIONS FROM THE APPROPRIATE AUTHORITIES. THE ENGINEER OR ARCHITECT SHALL NOT BE RESPONSIBLE FOR ANY DAMAGE OR LOSS OF DATA OR INFORMATION RESULTING FROM THE USE OF THIS DRAWING.

REV	DESCRIPTION	CHK BY	DATE
B	100% SUBMISSION	X.L.U.	10/10/2022
A	INTERIM SUBMISSION	N.W.U.	09/13/2022

**Kiewit**  
478 Chestnut Ridge Rd # 2  
Woodcliff Lake, NJ 07877

**Hitachi Energy**  
901 Main Campus Drive  
Raleigh, North Carolina 27606

**PROJECT**

**CHPE**  
Chempaint Hydrant PowerExpress

**Astoria HVDC Converter Station**  
31-45 20th Avenue, Astoria, Queens NY 11105  
Block #650 - Lot #310 - BIN #4624437

**CONVERTER REACTOR HALL POWER PLAN (2 OF 2)**

**STATE OF NEW YORK**  
JAMES R. GORMAN  
P.E.  
EXPIRATION DATE 12/31/2024

DATE: 12/13/2022  
INQUIRY NO: 169121  
DRAWING BY: X.L.U.  
CHECKED BY: D.D.ZEN  
DRAWING NO: E-153.00  
CADD FILE NO: 12/13/2022  
AUTOCAD VERSION: 2014

WARNING - IT IS A VIOLATION, OF THE NEW YORK STATE EDUCATION LAW, SECTION 2209.2 FOR ANY PERSON, UNLESS SHE OR HE IS ACTING UNDER THE DIRECTION OF A LICENSED PROFESSIONAL ENGINEER OR REGISTERED ARCHITECT, TO ALTER THIS DOCUMENT IN ANY WAY. IF ALTERED, THE ALTERING PERSON SHALL COMPLY WITH THE REQUIREMENTS OF NEW YORK EDUCATION LAW, SECTION 2209.2.



