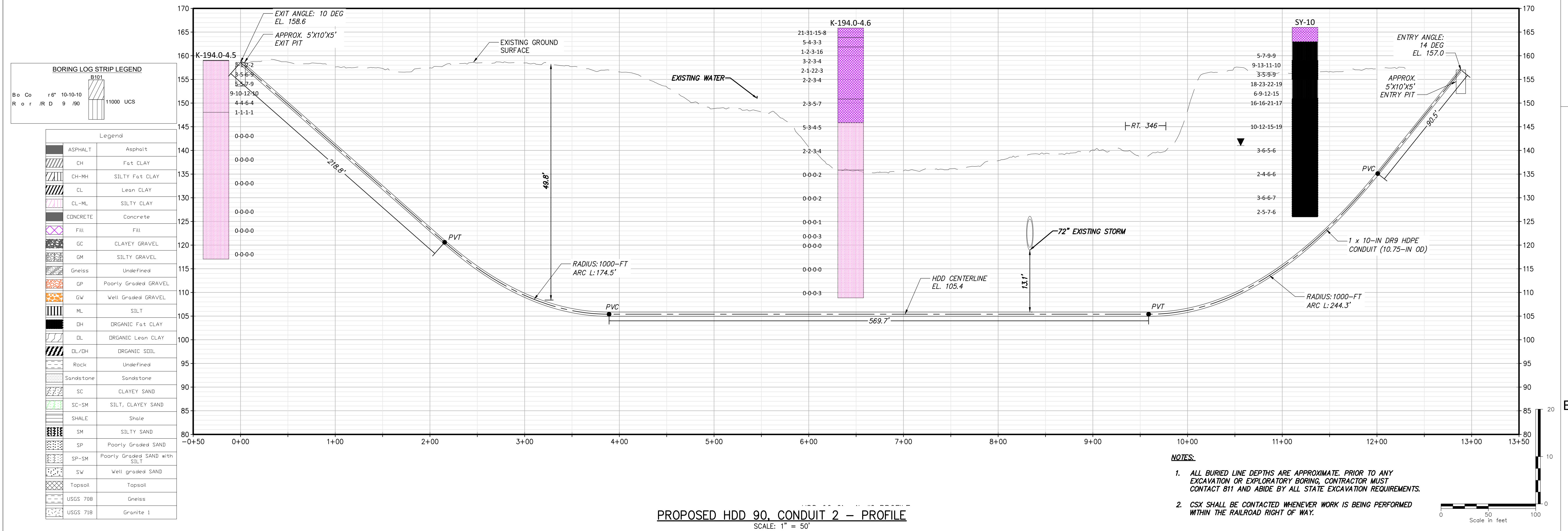
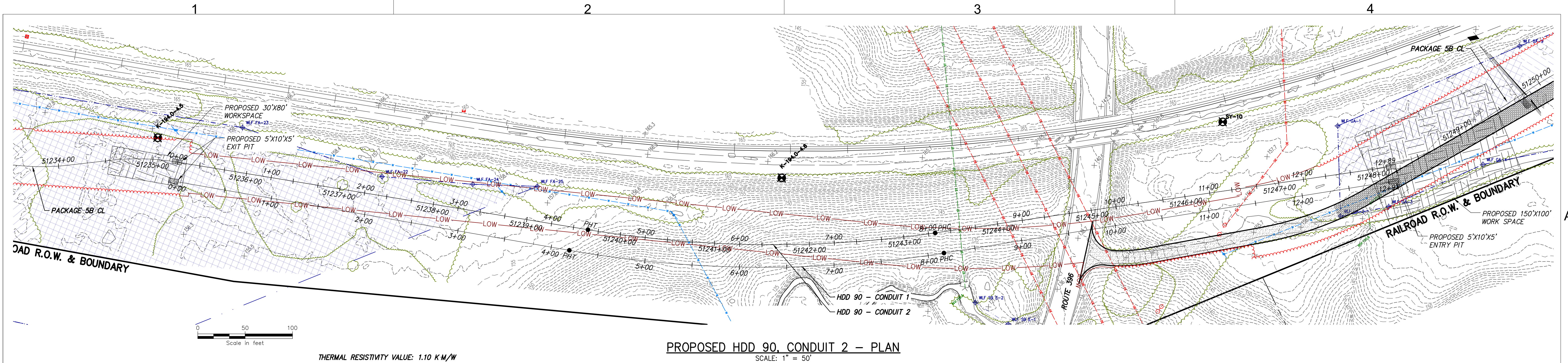




File: C:\USERS\CONNELLY\ACCORDS\BRIERLEY ASSOCIATES\322004-000 CHAMPLAIN HUDSON POWER EXPRESS\PROJECT FILES\40 CHAMPLAIN HUDSON POWER EXPRESS\PROJECT FILES\40 DESIGN\ENCL\PACKAGE 5\SB\_BA-HDD CIVL SHEETS\BB\_BA-HDD-CIVL-SHEETS.DWG Saved: 12/13/2022 6:37:39 PM Plotted: 12/13/2022 6:37:39 PM Current User: Brian Connelly  
LastSavedBy: bconnelly



FOR EMCP REVIEW  
NOT FOR CONSTRUCTION

IT IS A VIOLATION OF LAW FOR ANY PERSON, UNLESS THEY ARE ACTING UNDER THE DIRECTION OF A LICENSED PROFESSIONAL ENGINEER, ARCHITECT, LANDSCAPE ARCHITECT OR LAND SURVEYOR TO ALTER AN ITEM IN ANY WAY. IF AN ITEM BEARING THE STAMP OF A LICENSED PROFESSIONAL IS ALTERED, THE ALTERING ENGINEER, ARCHITECT, LANDSCAPE ARCHITECT OR LAND SURVEYOR SHALL STAMP THE DOCUMENT AND INCLUDE THE NOTATION "ALTERED BY" FOLLOWED BY THEIR SIGNATURE, THE DATE OF SUCH ALTERATION, AND A SPECIFIC DESCRIPTION OF THE ALTERATION.

No.	DATE	SUBMITTAL / REVISION DESCRIPTION	DB	APP
E	12/16/2022	FINAL SUBMISSION	BC	AM
D	11/11/2022	DRAFT FINAL SUBMISSION	BC	AM
C	6/6/2022	60 DESIGN SUBMISSION	BC	AM
B	2/11/2022	PRELIMINARY DESIGN DEVELOPMENT	BC	AM
A	1/24/2022	PRELIMINARY PROGRESS	BC	AM

CHAMPLAIN HUDSON POWER EXPRESS SEGMENT 8 (PACKAGE 5B) - CSX: SELKIRK RAIL YARD BYPASS PROPOSED PLAN AND PROFILE - HDD 90 ROUTE 96 CROSSING, CONDUIT 2 SCHENECTADY COUNTY, NY				KIEWIT PROJECT NO. 21162 BRIERLEY PROJECT NO. 322004-000 DRAWING NO. <b>C-316</b>	
DRAWN BY:	BC	DESIGNED BY:	NS	APPROVED BY:	AM
SCALE	AS SHOWN	DATE	12/16/2022	SH.NO.	XX OF 186

File: \\192.168.7.5\NYC\_PROJECTS\120174-CHPE\_CABLE\_INSTALL-KIEWIT\60\_CAD\20\_ENGINEERING\_CAD\_FILES\PACKAGE\_5B\NY\_ENVIRONMENTAL\_(EROSION\_CONTROL)\01\_KOE\SHEET\_FILES\21162\_5B\_C400.DWG Saved: 12/14/2022 8:07:51 PM Plotted: 12/14/2022 8:08:13 PM Current User: Melinda Kwok  
LastSavedBy: mkwak

1

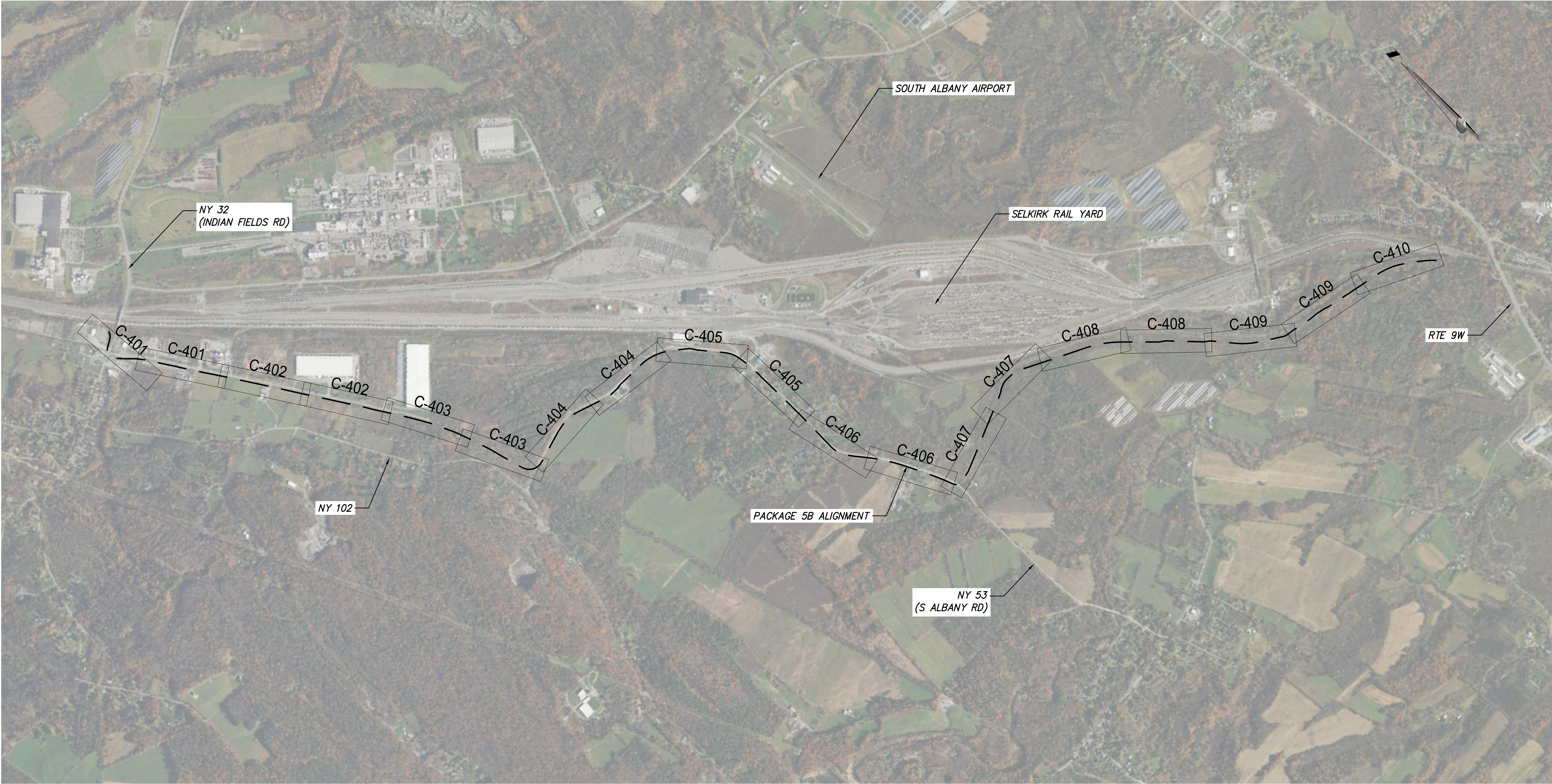
2

3

4

A

B



E&SC KEY PLAN  
SCALE: 1" = 1000'



FOR EMCP REVIEW  
NOT FOR CONSTRUCTION

IT IS A VIOLATION OF LAW FOR ANY PERSON, UNLESS THEY ARE ACTING UNDER THE DIRECTION OF A LICENSED PROFESSIONAL ENGINEER, ARCHITECT, LANDSCAPE ARCHITECT OR LAND SURVEYOR TO ALTER AN ITEM IN ANY WAY. IF AN ITEM BEARING THE STAMP OF A LICENSED PROFESSIONAL IS ALTERED, THE ALTERING ENGINEER, ARCHITECT, LANDSCAPE ARCHITECT OR LAND SURVEYOR SHALL STAMP THE DOCUMENT AND INCLUDE THE NOTATION "ALTERED BY" FOLLOWED BY THEIR SIGNATURE, THE DATE OF SUCH ALTERATION, AND A SPECIFIC DESCRIPTION OF THE ALTERATION.

----	----	----	----	----
----	----	----	----	----
----	----	----	----	----
----	----	----	----	----
----	----	----	----	----
----	----	----	----	----
----	----	----	----	----
A	12/16/2022	FINAL SUBMISSION	MK	NH
No.	DATE	SUBMITTAL / REVISION DESCRIPTION	DB	APP

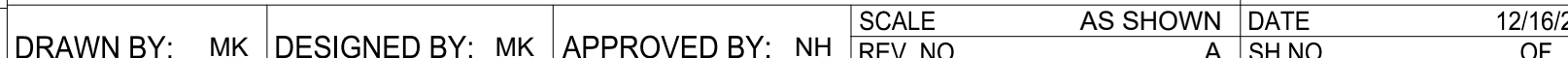
CHAMPLAIN HUDSON POWER EXPRESS  
SEGMENT 9 (PACKAGE 5B) - CSX: SELKIRK RAIL YARD BYPASS  
E&SC KEY PLAN

DRAWN BY:	MK	DESIGNED BY:	MK	APPROVED BY:	NH	SCALE	AS SHOWN	DATE	12/16/2022
						REV. NO.	A	SH. NO.	XXX OF

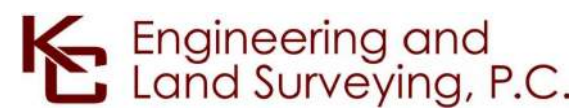
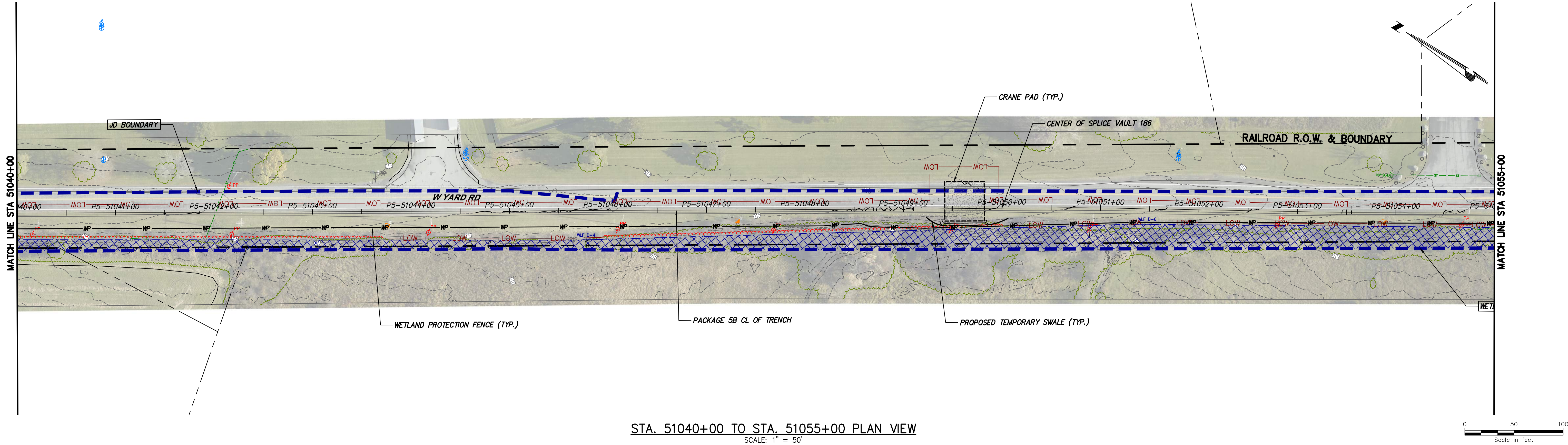
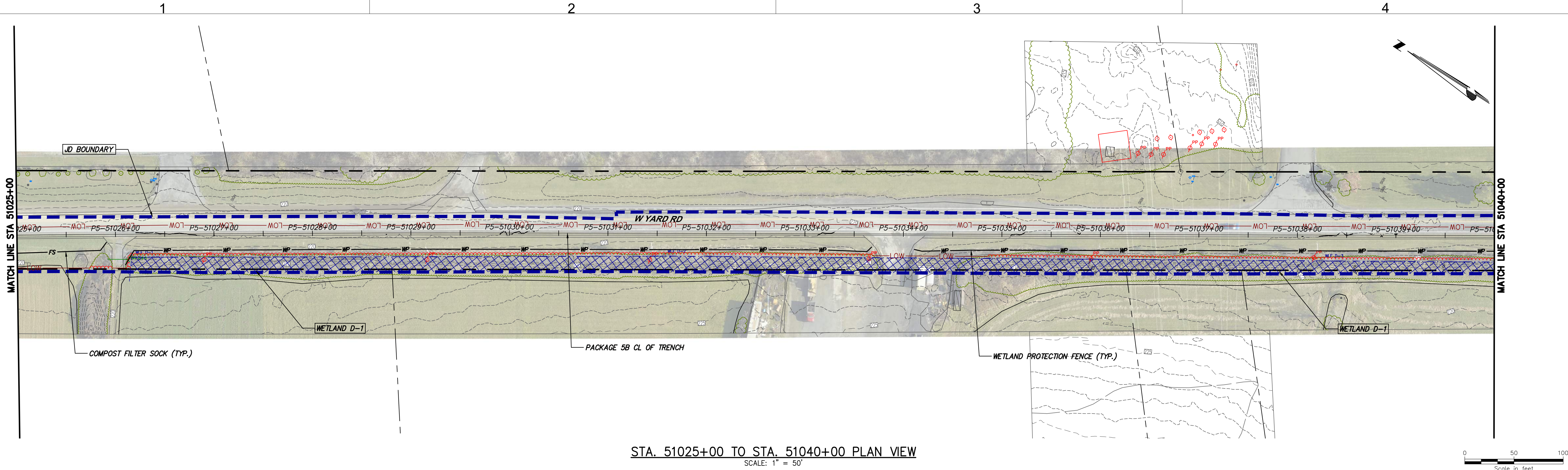
KIEWIT PROJECT NO.	21162
KC PROJECT NO.	120174
DRAWING NO.	C-400



A scale bar labeled "Scale in feet" with markings at 0, 50, and 100. The bar is divided into alternating black and white segments.



File: P:\120174-CHPE-CABLE-INSTALL-KIEWIT\60\_CAD\20\_ENGINEERING\_CAD\_FILES\PACKAGE\_5B\NY\_ENVIRONMENTAL\_(EROSION\_CONTROL)\01\_KCE\SHEET\_FILES\21162\_SB\_C401-TD-C410.DWG Saved: 12/15/2022 7:16:46 PM Plotted: 12/15/2022 7:24:21 PM Current User: Melinda Kwok LastSavedBy: mlkwk



**FOR EMCP REVIEW  
NOT FOR CONSTRUCTION**

IT IS A VIOLATION OF LAW FOR ANY PERSON, UNLESS THEY ARE ACTING UNDER THE DIRECTION OF A LICENSED PROFESSIONAL ENGINEER, ARCHITECT, LANDSCAPE ARCHITECT OR LAND SURVEYOR TO ALTER AN ITEM IN ANY WAY. IF AN ITEM BEARING THE STAMP OF A LICENSED PROFESSIONAL IS ALTERED, THE ALTERING ENGINEER, ARCHITECT, LANDSCAPE ARCHITECT OR LAND SURVEYOR SHALL STAMP THE DOCUMENT AND INCLUDE THE NOTATION "ALTERED BY" FOLLOWED BY THEIR SIGNATURE, THE DATE OF SUCH ALTERATION, AND A SPECIFIC DESCRIPTION OF THE ALTERATION.

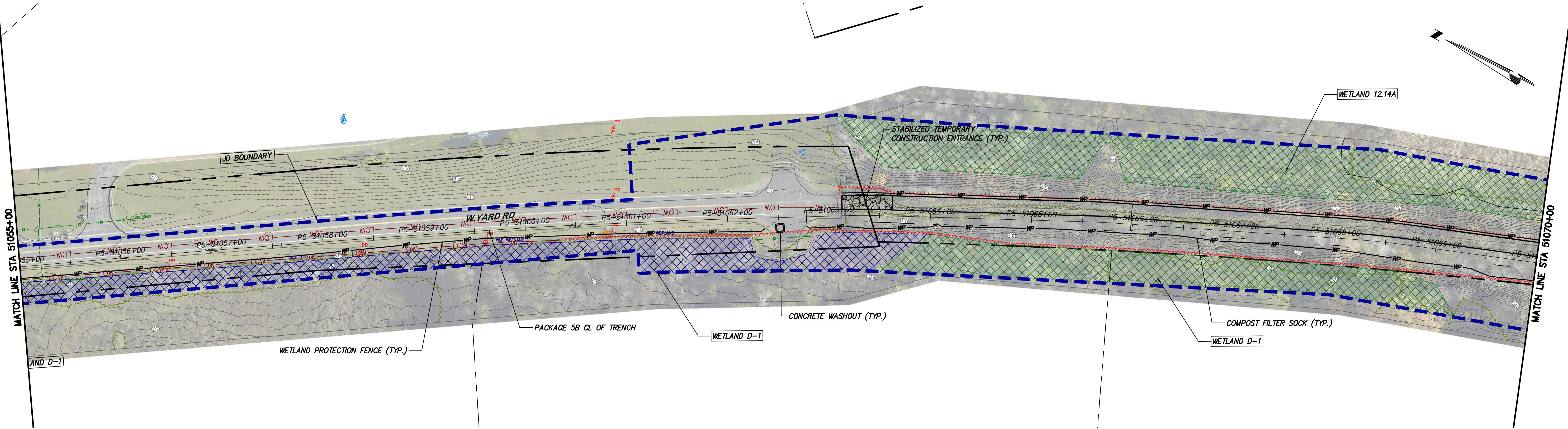
----	----	----	----	----	----
----	----	----	----	----	----
----	----	----	----	----	----
----	----	----	----	----	----
----	----	----	----	----	----
----	----	----	----	----	----
A	12/16/2022	FINAL SUBMISSION	MK	NH	
No.	DATE	SUBMITTAL / REVISION DESCRIPTION	DB	APP	

**CHAMPLAIN HUDSON POWER EXPRESS  
SEGMENT 9 (PACKAGE 5B) - CSX: SELKIRK RAIL YARD BYPASS  
STA. 51025+00 TO STA. 51055+00  
EROSION AND SEDIMENT CONTROL PLAN**

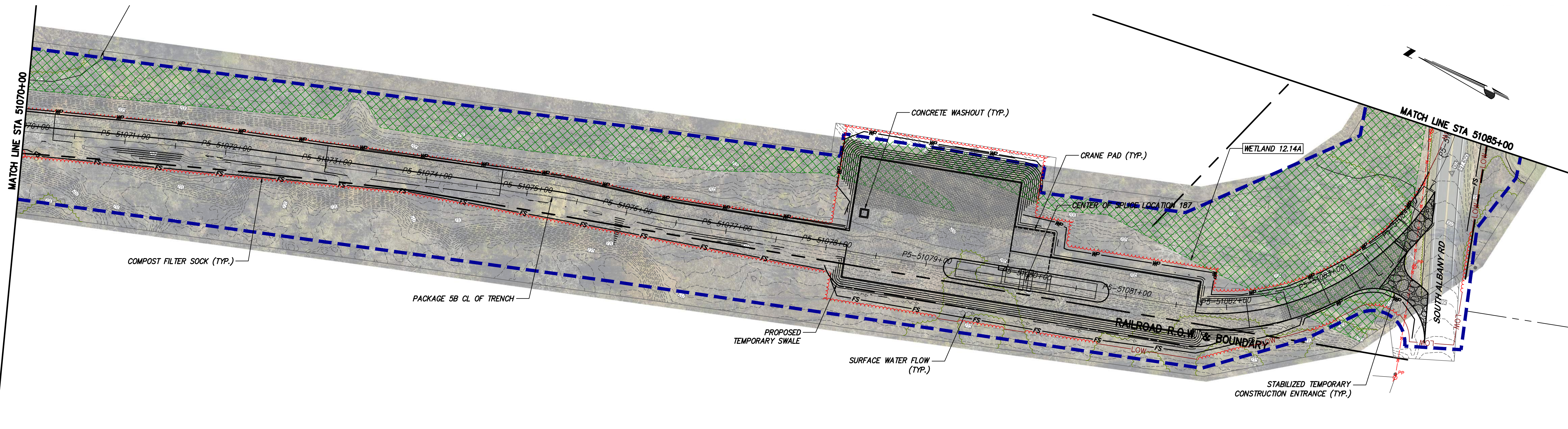
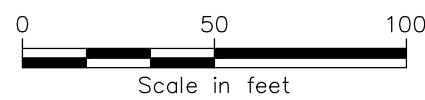
KIEWIT PROJECT NO.	21162
KC PROJECT NO.	120174
DRAWING NO.	<b>C-402</b>
DATE	12/16/2022
SH.NO.	OF

DRAWN BY:	MK	DESIGNED BY:	MK	APPROVED BY:	NH	SCALE	AS SHOWN	DATE	12/16/2022
						REV. NO.	A	SH.NO.	OF

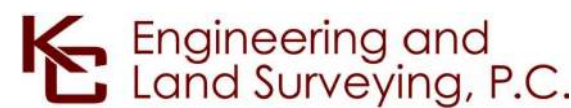
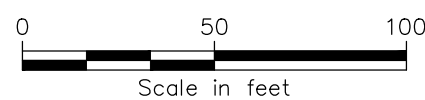
File: P:\120174-CHPE-INSTALL-KIEWIT\CAD\20\_ENGINEERING\_CAD\_FILES\PACKAGE\_5B\NY\_ENVIRONMENTAL\_EROSION\_CONTROL\01\_KCE\SHEET\_FILES\21162\_SB\_C401-TD-C410.DWG Saved: 12/15/2022 7:16:46 PM Plotted: 12/15/2022 7:26:15 PM Current User: Melinda Kwok LastSavedBy: mlkwk



STA. 51055+00 to STA. 51070+00 PLAN VIEW  
SCALE: 1" = 50'



STA. 51070+00 to STA. 51085+00 PLAN VIEW  
SCALE: 1" = 50'



FOR EMCP REVIEW  
NOT FOR CONSTRUCTION

IT IS A VIOLATION OF LAW FOR ANY PERSON, UNLESS THEY ARE ACTING UNDER THE DIRECTION OF A LICENSED PROFESSIONAL ENGINEER, ARCHITECT, LANDSCAPE ARCHITECT OR LAND SURVEYOR TO ALTER AN ITEM IN ANY WAY. IF AN ITEM BEARING THE STAMP OF A LICENSED PROFESSIONAL IS ALTERED, THE ALTERING ENGINEER, ARCHITECT, LANDSCAPE ARCHITECT OR LAND SURVEYOR SHALL STAMP THE DOCUMENT AND INCLUDE THE NOTATION "ALTERED BY" FOLLOWED BY THEIR SIGNATURE, THE DATE OF SUCH ALTERATION, AND A SPECIFIC DESCRIPTION OF THE ALTERATION.

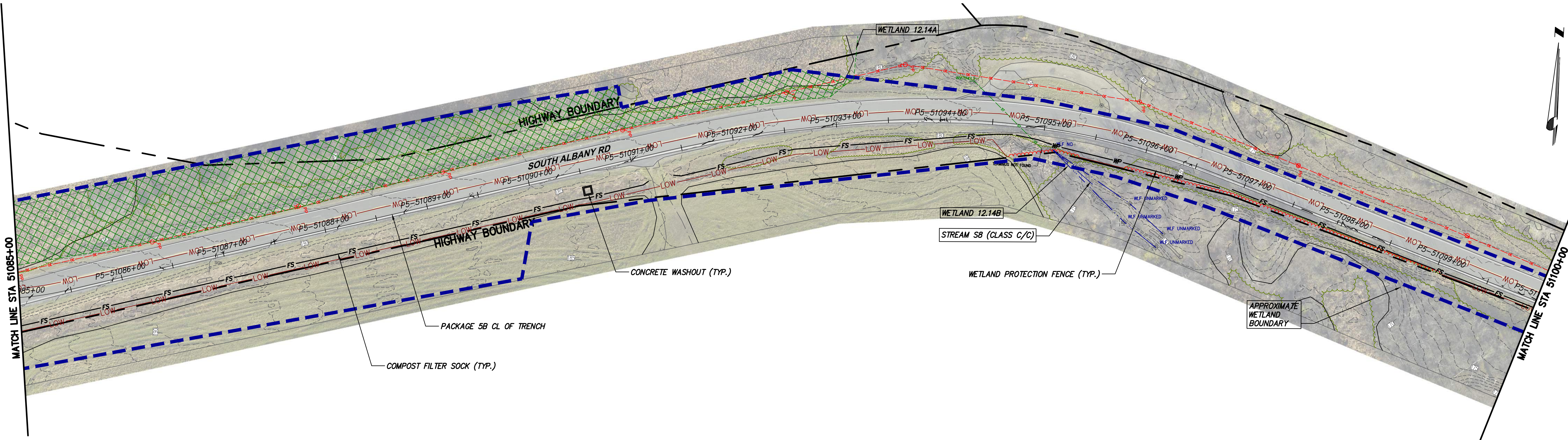
----	----	----	----	----	----
----	----	----	----	----	----
----	----	----	----	----	----
----	----	----	----	----	----
----	----	----	----	----	----
----	----	----	----	----	----
A	12/16/2022	FINAL SUBMISSION	MK	NH	
No.	DATE	SUBMITTAL / REVISION DESCRIPTION	DB	APP	

CHAMPLAIN HUDSON POWER EXPRESS  
SEGMENT 9 (PACKAGE 5B) - CSX: SELKIRK RAIL YARD BYPASS  
STA. 51055+00 TO STA. 51085+00  
EROSION AND SEDIMENT CONTROL PLAN

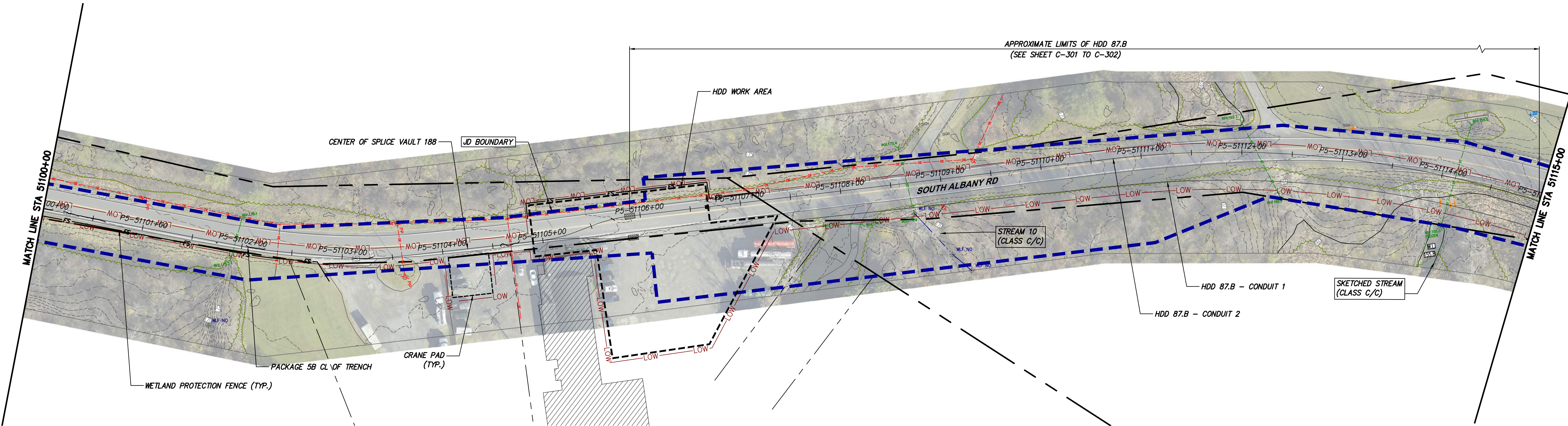
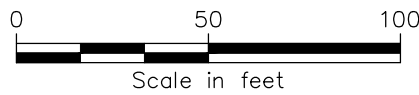
DRAWN BY:	MK	DESIGNED BY:	MK	APPROVED BY:	NH	SCALE	AS SHOWN	DATE	12/16/2022
						REV. NO.	A	SH. NO.	OF

KIEWIT PROJECT NO.	21162
KC PROJECT NO.	120174
DRAWING NO.	C-403
DATE	12/16/2022
SH. NO.	OF

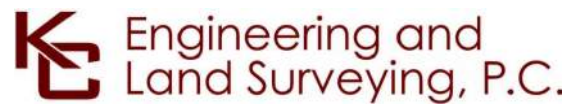
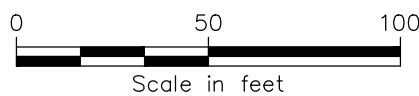
File: P:\120174-CHPE\_INSTALL-KIEWIT\CAD\20\_ENGINEERING\_CAD\_FILES\PACKAGE\_5B\NY\_ENVIRONMENTAL\_EROSION\_CONTROL\01\_KCE\SHEET\_FILES\21162\_SB\_C401-TD-C410.DWG Saved: 12/15/2022 7:16:46 PM Plotted: 12/15/2022 7:27:50 PM Current User: Malinda Kwok LastSavedBy: mlkwok



STA. 51085+00 TO STA. 51100+00 PLAN VIEW  
SCALE: 1" = 50'



STA. 51100+00 TO STA. 51115+00 PLAN VIEW  
SCALE: 1" = 50'



**FOR EMCP REVIEW  
NOT FOR CONSTRUCTION**

IT IS A VIOLATION OF LAW FOR ANY PERSON, UNLESS THEY ARE ACTING UNDER THE DIRECTION OF A LICENSED PROFESSIONAL ENGINEER, ARCHITECT, LANDSCAPE ARCHITECT OR LAND SURVEYOR TO ALTER AN ITEM IN ANY WAY. IF AN ITEM BEARING THE STAMP OF A LICENSED PROFESSIONAL IS ALTERED, THE ALTERING ENGINEER, ARCHITECT, LANDSCAPE ARCHITECT OR LAND SURVEYOR SHALL STAMP THE DOCUMENT AND INCLUDE THE NOTATION "ALTERED BY" FOLLOWED BY THEIR SIGNATURE, THE DATE OF SUCH ALTERATION, AND A SPECIFIC DESCRIPTION OF THE ALTERATION.

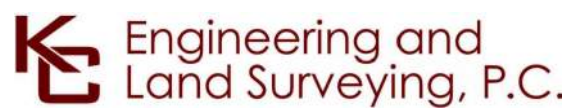
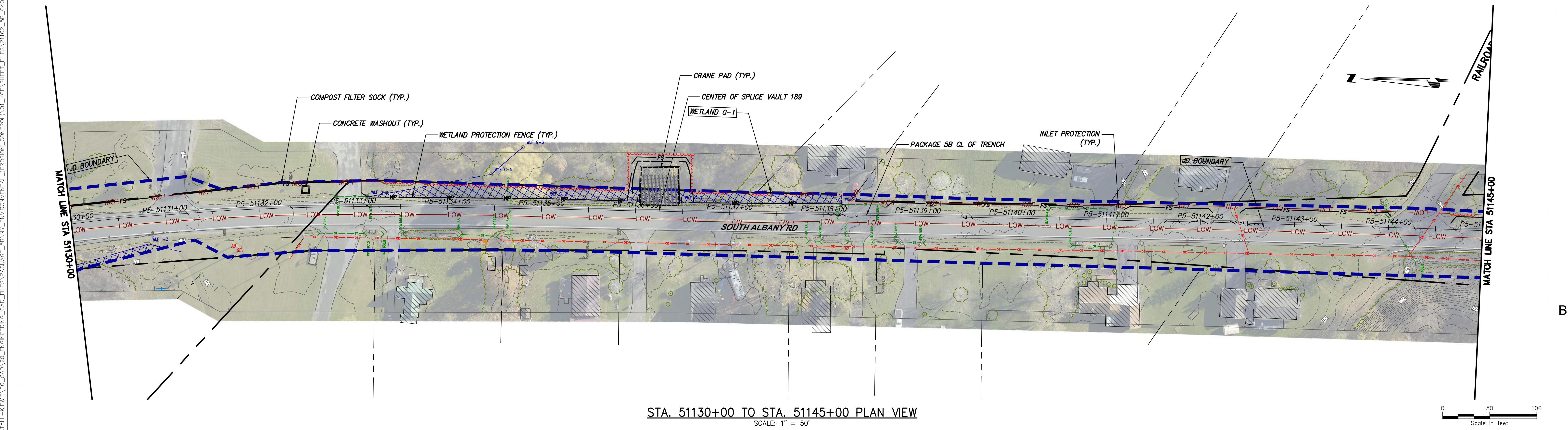
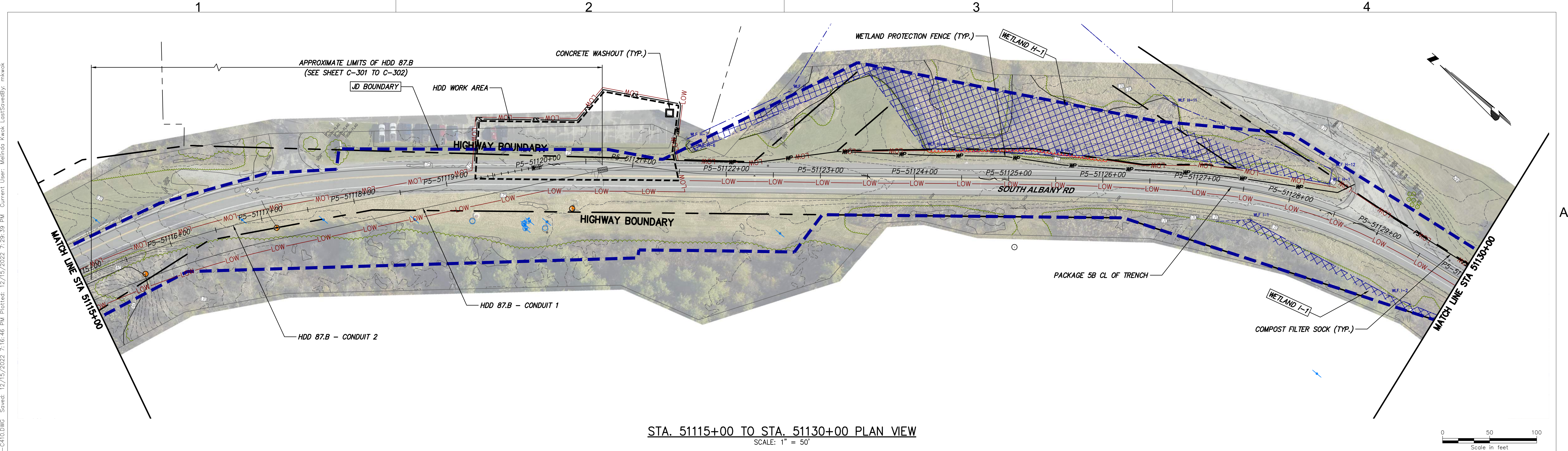
----	----	----	----	----	----
----	----	----	----	----	----
----	----	----	----	----	----
----	----	----	----	----	----
----	----	----	----	----	----
----	----	----	----	----	----
A	12/16/2022	FINAL SUBMISSION	MK	NH	
No.	DATE	SUBMITTAL / REVISION DESCRIPTION	DB	APP	

**CHAMPLAIN HUDSON POWER EXPRESS  
SEGMENT 9 (PACKAGE 5B) - CSX: SELKIRK RAIL YARD BYPASS**  
**STA. 51085+00 TO STA. 51115+00**  
**EROSION AND SEDIMENT CONTROL PLAN**

DRAWN BY: MK DESIGNED BY: MK APPROVED BY: NH SCALE AS SHOWN DATE 12/16/2022  
REV. NO. A SH. NO. OF

KIEWIT PROJECT NO.	21162
KC PROJECT NO.	120174
DRAWING NO.	<b>C-404</b>
DATE	12/16/2022
SH. NO.	OF

File: P:\120174-CHPE\_CABLE\_INSTALL-KEWIT\60\_CAD\20\_ENGINEERING\_CAD\_FILES\PACKAGE\_5B\_NY\_ENVIRONMENTAL (EROSION\_CONTROL)\01\_KCE\SHEET\_FILES\21162\_SB\_C401-TD-C410.DWG Saved: 12/15/2022 7:29:39 PM Current User: Malinda Kwok LastSavedBy: mlkwok



FOR EMCP REVIEW  
NOT FOR CONSTRUCTION

IT IS A VIOLATION OF LAW FOR ANY PERSON, UNLESS THEY ARE ACTING UNDER THE DIRECTION OF A LICENSED PROFESSIONAL ENGINEER, ARCHITECT, LANDSCAPE ARCHITECT OR LAND SURVEYOR TO ALTER AN ITEM IN ANY WAY. IF AN ITEM BEARING THE STAMP OF A LICENSED PROFESSIONAL IS ALTERED, THE ALTERING ENGINEER, ARCHITECT, LANDSCAPE ARCHITECT OR LAND SURVEYOR SHALL STAMP THE DOCUMENT AND INCLUDE THE NOTATION "ALTERED BY" FOLLOWED BY THEIR SIGNATURE, THE DATE OF SUCH ALTERATION, AND A SPECIFIC DESCRIPTION OF THE ALTERATION.

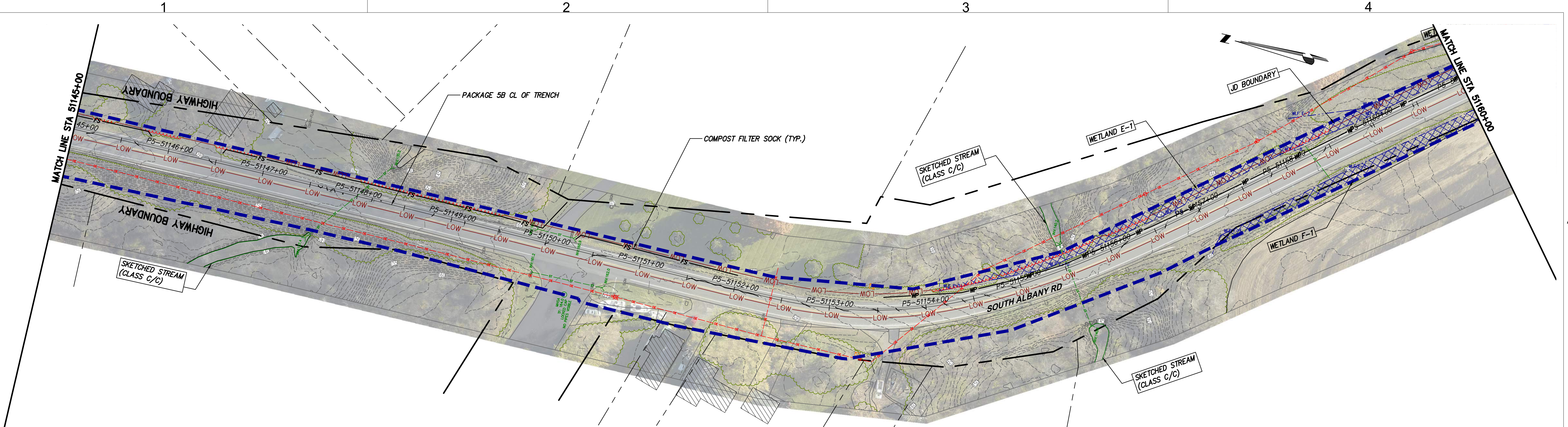
----	----	----	----	----	----
----	----	----	----	----	----
----	----	----	----	----	----
----	----	----	----	----	----
----	----	----	----	----	----
----	----	----	----	----	----
A	12/16/2022	FINAL SUBMISSION	MK	NH	
No.	DATE	SUBMITTAL / REVISION DESCRIPTION	DB	APP	

CHAMPLAIN HUDSON POWER EXPRESS  
SEGMENT 9 (PACKAGE 5B) - CSX: SELKIRK RAIL YARD BYPASS  
STA. 51115+00 TO STA. 51145+00  
EROSION AND SEDIMENT CONTROL PLAN

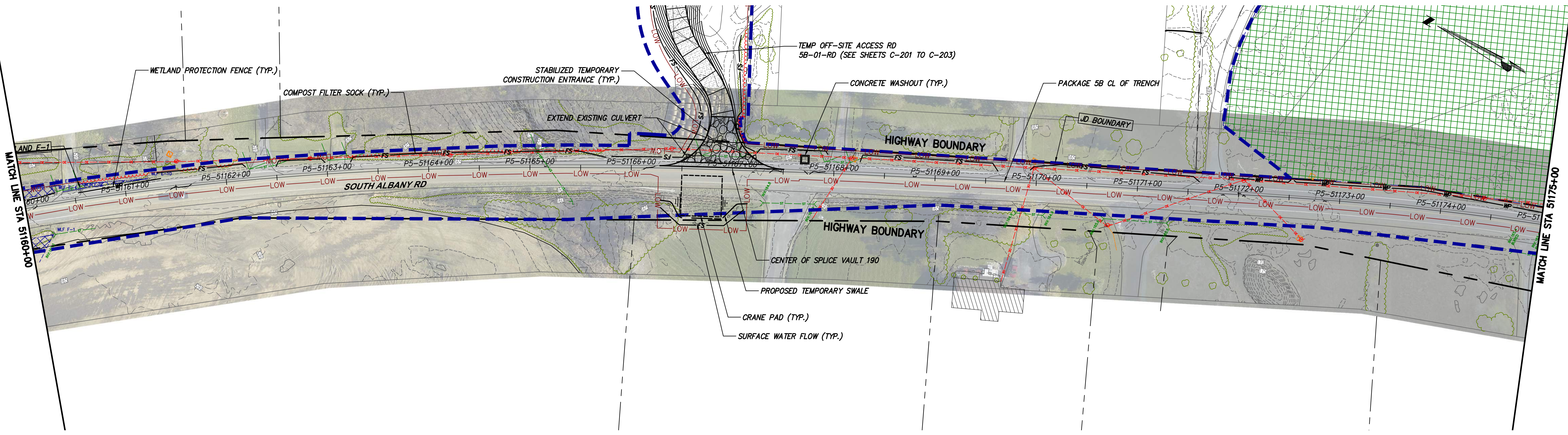
DRAWN BY: MK DESIGNED BY: MK APPROVED BY: NH  
SCALE: AS SHOWN REV. NO. A

KIEWIT PROJECT NO.	21162
KC PROJECT NO.	120174
DRAWING NO.	C-405
DATE	12/16/2022
SH.NO.	OF

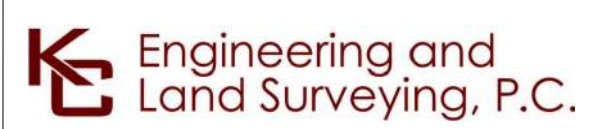
File: P:\120174-CHPE-INSTALL-KEWIT\60\_CAD\20\_ENGINEERING\_CAD\_FILES\PACKAGE\_5B\NY\_ENVIRONMENTAL\_EROSION\_CONTROL\01\_KCE\SHEET\_FILES\21162\_SB\_C401-TD-C410.DWG Saved: 12/15/2022 7:16:46 PM Plotted: 12/15/2022 7:31:28 PM Current User: Melinda Kwak LastSavedBy: mlwak



STA. 51145+00 TO STA. 51160+00 PLAN VIEW  
SCALE: 1" = 50'



STA. 51160+00 TO STA. 51175+00 PLAN VIEW  
SCALE: 1" = 50'



FOR EMCP REVIEW  
NOT FOR CONSTRUCTION

IT IS A VIOLATION OF LAW FOR ANY PERSON, UNLESS THEY ARE ACTING UNDER THE DIRECTION OF A LICENSED PROFESSIONAL ENGINEER, ARCHITECT, LANDSCAPE ARCHITECT OR LAND SURVEYOR TO ALTER AN ITEM IN ANY WAY. IF AN ITEM BEARING THE STAMP OF A LICENSED PROFESSIONAL IS ALTERED, THE ALTERING ENGINEER, ARCHITECT, LANDSCAPE ARCHITECT OR LAND SURVEYOR SHALL STAMP THE DOCUMENT AND INCLUDE THE NOTATION "ALTERED BY" FOLLOWED BY THEIR SIGNATURE, THE DATE OF SUCH ALTERATION, AND A SPECIFIC DESCRIPTION OF THE ALTERATION.

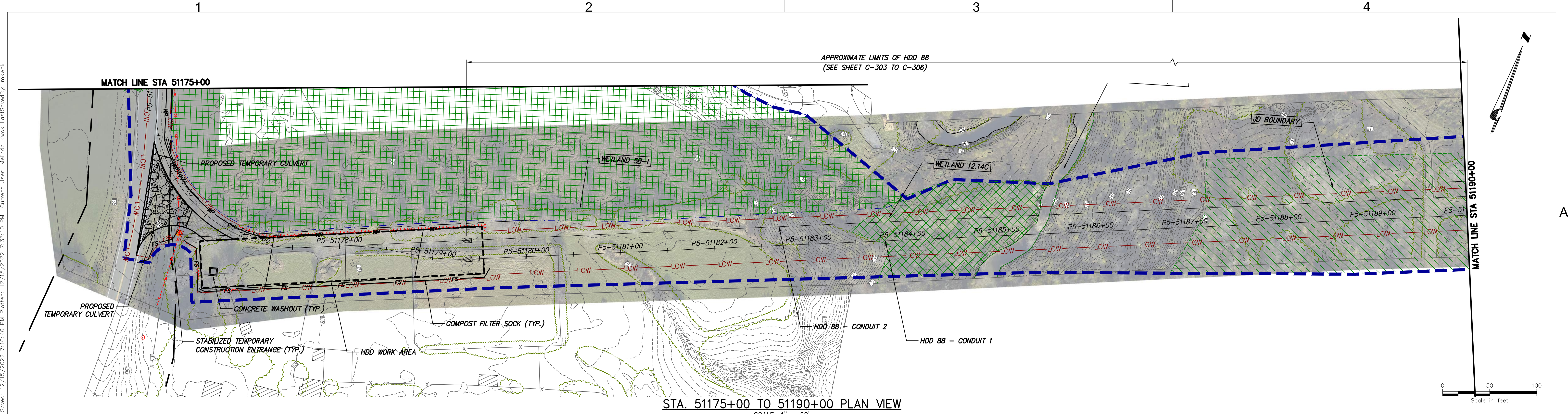
----	----	----	----	----	----
----	----	----	----	----	----
----	----	----	----	----	----
----	----	----	----	----	----
----	----	----	----	----	----
----	----	----	----	----	----
A	12/16/2022	FINAL SUBMISSION	MK	NH	
No.	DATE	SUBMITTAL / REVISION DESCRIPTION	DB	APP	

CHAMPLAIN HUDSON POWER EXPRESS  
SEGMENT 9 (PACKAGE 5B) - CSX: SELKIRK RAIL YARD BYPASS  
STA. 51145+00 TO STA. 51175+00  
EROSION AND SEDIMENT CONTROL PLAN

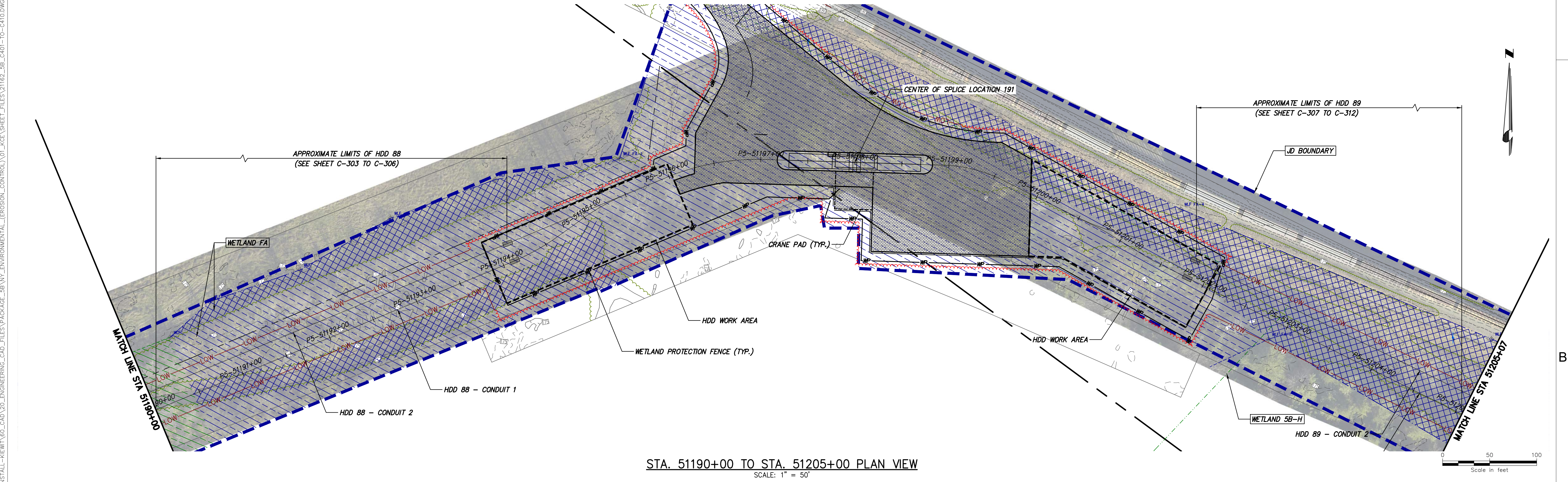
DRAWN BY: MK DESIGNED BY: MK APPROVED BY: NH  
SCALE: AS SHOWN  
REV. NO. A

KIEWIT PROJECT NO.	21162
KC PROJECT NO.	120174
DRAWING NO.	C-406
DATE	12/16/2022
SH.NO.	OF

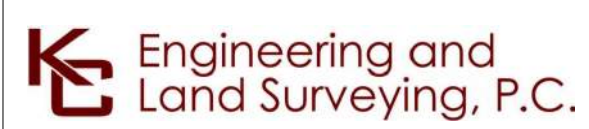
File: P:\120174-CHPE\_CABLE\_INSTALL-KEWIT\60\_CAD\20\_ENGINEERING\_CAD\_FILES\PACKAGE\_5B\NY\_ENVIRONMENTAL\_(EROSION\_CONTROL)\01\_KCE\SHEET\_FILES\21162\_SB\_NY\_C410.DWG Saved: 12/15/2022 7:16:46 PM Plotted: 12/15/2022 7:33:10 PM Current User: Melinda Kwok LastSavedBy: mikwok



STA. 51175+00 TO 51190+00 PLAN VIEW  
SCALE: 1" = 50'



STA. 51190+00 TO STA. 51205+00 PLAN VIEW  
SCALE: 1" = 50'



**FOR EMCP REVIEW  
NOT FOR CONSTRUCTION**

IT IS A VIOLATION OF LAW FOR ANY PERSON, UNLESS THEY ARE ACTING UNDER THE DIRECTION OF A LICENSED PROFESSIONAL ENGINEER, ARCHITECT, LANDSCAPE ARCHITECT OR LAND SURVEYOR TO ALTER AN ITEM IN ANY WAY. IF AN ITEM BEARING THE STAMP OF A LICENSED PROFESSIONAL IS ALTERED, THE ALTERING ENGINEER, ARCHITECT, LANDSCAPE ARCHITECT OR LAND SURVEYOR SHALL STAMP THE DOCUMENT AND INCLUDE THE NOTATION "ALTERED BY" FOLLOWED BY THEIR SIGNATURE, THE DATE OF SUCH ALTERATION, AND A SPECIFIC DESCRIPTION OF THE ALTERATION.

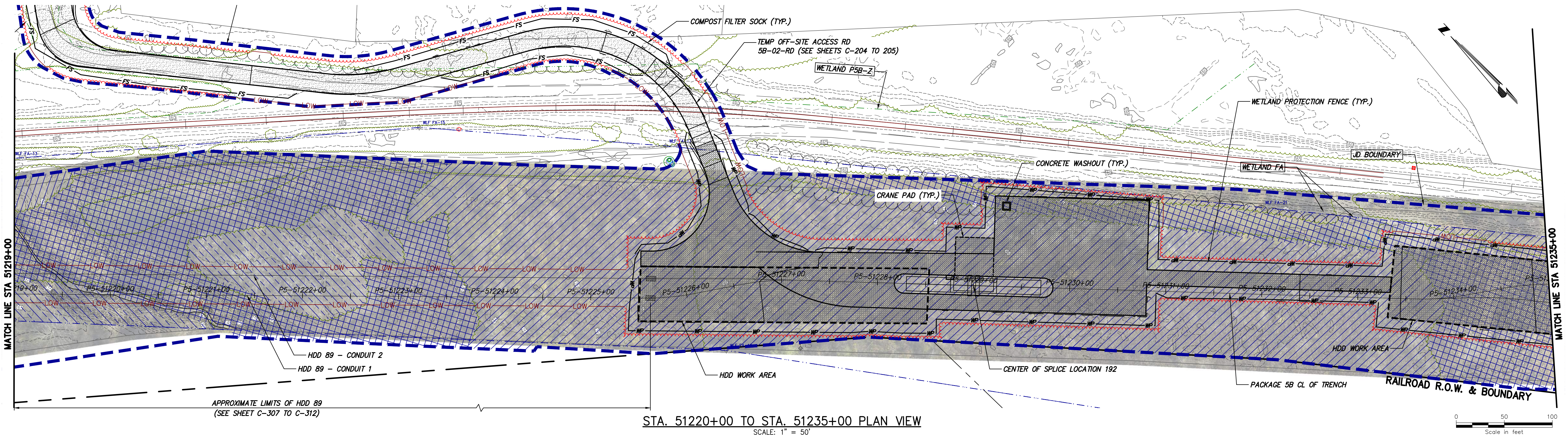
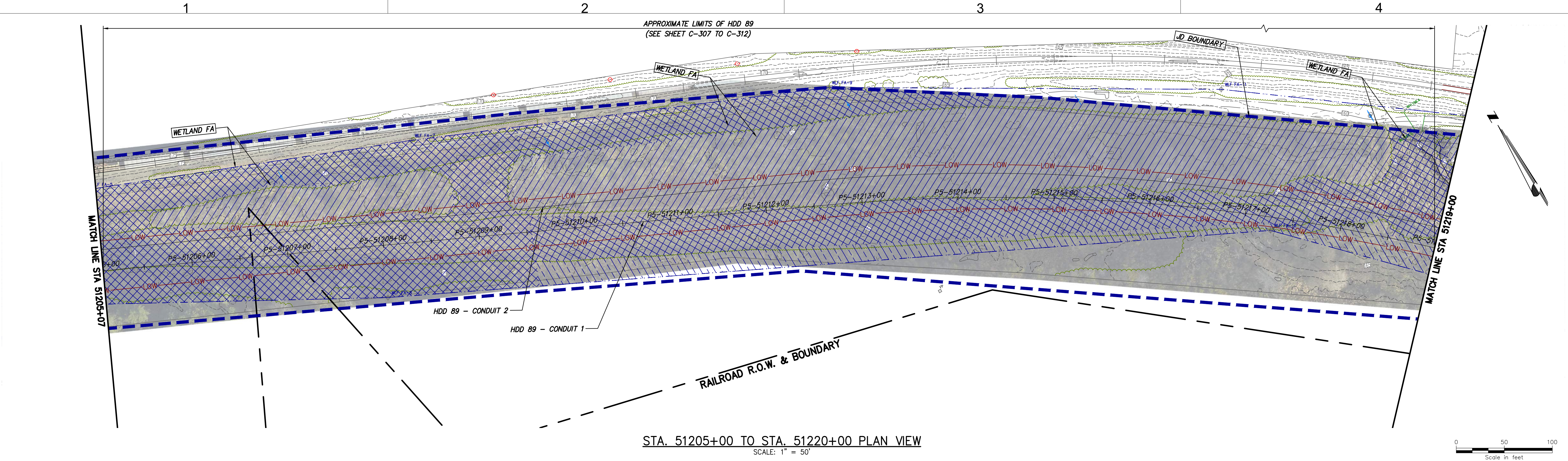
----	----	----	----	----	----	----	----
----	----	----	----	----	----	----	----
----	----	----	----	----	----	----	----
----	----	----	----	----	----	----	----
----	----	----	----	----	----	----	----
----	----	----	----	----	----	----	----
A	12/16/2022	FINAL SUBMISSION	----	----	----	----	----
No.	DATE	SUBMITTAL / REVISION DESCRIPTION	DB	APP	DRAWN BY:	DESIGNED BY:	APPROVED BY:


**CHAMPLAIN HUDSON POWER EXPRESS  
SEGMENT 9 (PACKAGE 5B) - CSX: SELKIRK RAIL YARD BYPASS**  
STA. 51175+00 TO STA. 51205+00  
EROSION AND SEDIMENT CONTROL PLAN

KIEWIT PROJECT NO.	21162
KC PROJECT NO.	120174
DRAWING NO.	<b>C-407</b>
DATE	12/16/2022
SH.NO.	OF


DRAWN BY: MK DESIGNED BY: MK APPROVED BY: NH SCALE AS SHOWN DATE 12/16/2022  
REV. NO. A SH.NO. OF

File: P:\120174-CHPE\_CABLE\_INSTALL-KEWIT\60\_CAD\20\_ENGINEERING\_CAD\_FILES\PACKAGE\_5B\NY\_ENVIRONMENTAL\_(EROSION\_CONTROL)\01\_KCE\SHEET\_FILES\21162\_SB\_C401-TD-C410.DWG Saved: 12/15/2022 7:35:09 PM Plotted: 12/15/2022 7:16:46 PM Current User: Malinda Kwok LastSavedBy: mlkwok

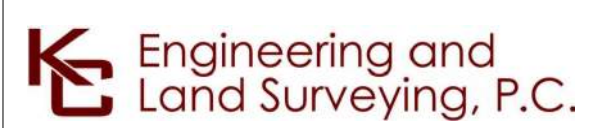




Champlain Hudson  
Power Express



Kiewit



Engineering and  
Land Surveying, P.C.

**FOR EMCP REVIEW  
NOT FOR CONSTRUCTION**

IT IS A VIOLATION OF LAW FOR ANY PERSON, UNLESS THEY ARE ACTING UNDER THE DIRECTION OF A LICENSED PROFESSIONAL ENGINEER, ARCHITECT, LANDSCAPE ARCHITECT OR LAND SURVEYOR TO ALTER AN ITEM IN ANY WAY. IF AN ITEM BEARING THE STAMP OF A LICENSED PROFESSIONAL IS ALTERED, THE ALTERING ENGINEER, ARCHITECT, LANDSCAPE ARCHITECT OR LAND SURVEYOR SHALL STAMP THE DOCUMENT AND INCLUDE THE NOTATION "ALTERED BY" FOLLOWED BY THEIR SIGNATURE, THE DATE OF SUCH ALTERATION, AND A SPECIFIC DESCRIPTION OF THE ALTERATION.

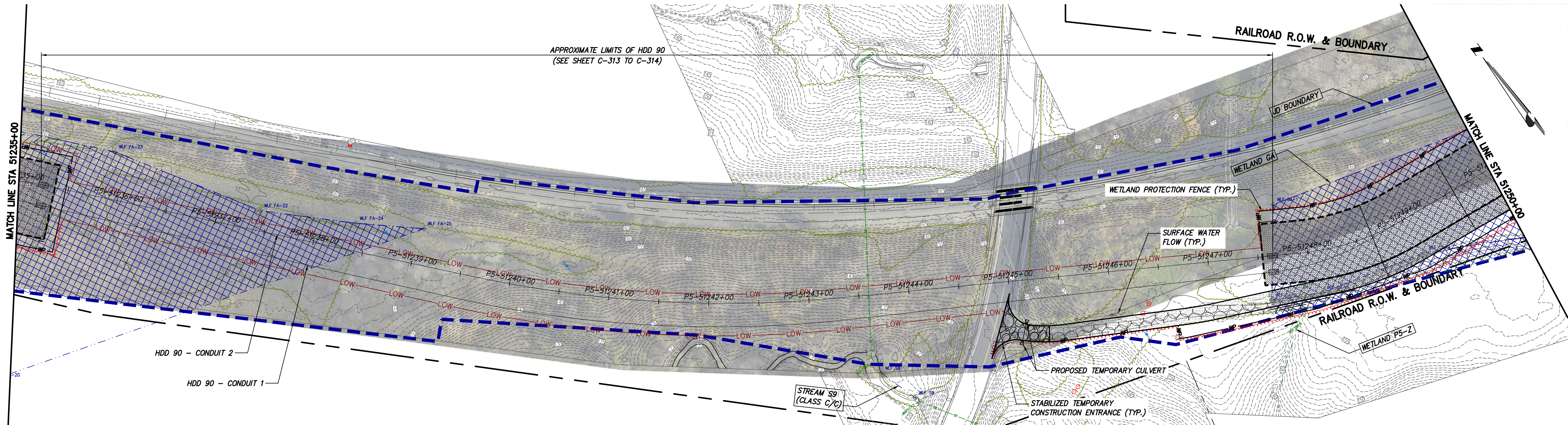
12/16/2022	FINAL SUBMISSION	MK	NH
No.	DATE	SUBMITTAL / REVISION DESCRIPTION	DB APP

**CHAMPLAIN HUDSON POWER EXPRESS  
SEGMENT 9 (PACKAGE 5B) - CSX: SELKIRK RAIL YARD BYPASS  
EROSION AND SEDIMENT CONTROL PLAN  
STA. 51205+00 TO STA. 51235+00**

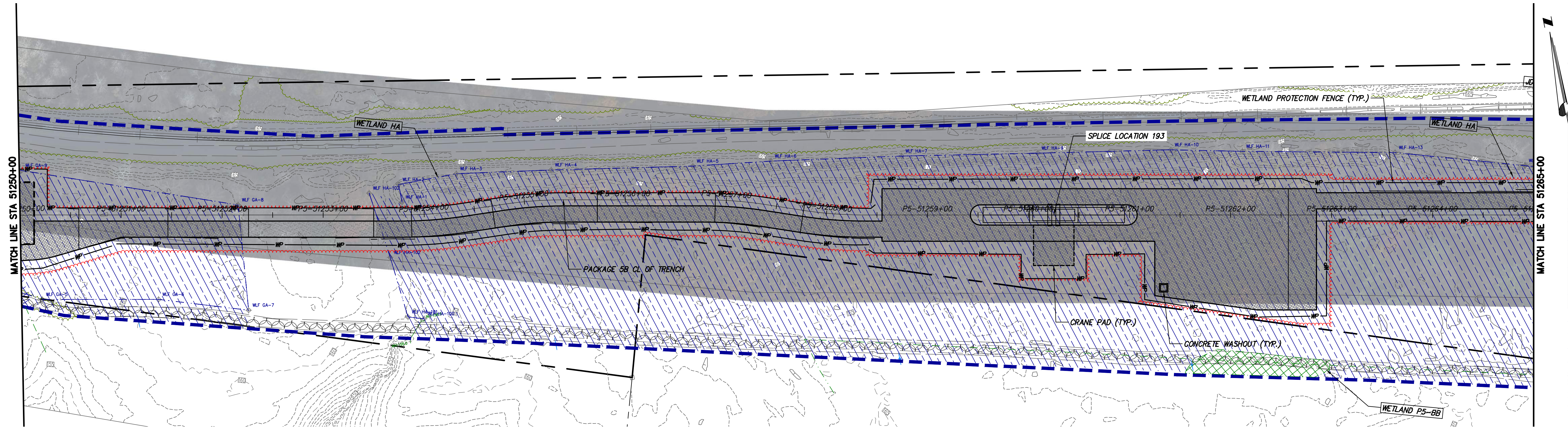
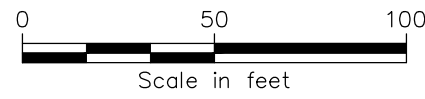
DRAWN BY: MK	DESIGNED BY: MK	APPROVED BY: NH	SCALE: AS SHOWN	DATE: 12/16/2022
			REV. NO. A	SH. NO. OF

KIEWIT PROJECT NO. 21162  
KC PROJECT NO. 120174  
DRAWING NO. **C-408**

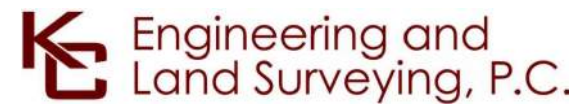
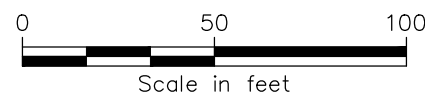
File: P:\120174-CHPE-INSTALL-KIEWIT\60\_CAD\20\_ENGINEERING\_CAD\_FILES\PACKAGE\_5B\NY\_ENVIRONMENTAL\_(EROSION\_CONTROL)\01\_KCE\SHRIT\_FILES\21162\_SB\_C401-TD-C410.DWG Saved: 12/15/2022 7:36:53 PM Plotted: 12/15/2022 7:16:46 PM Current User: Malinda Kwok LastSavedBy: mlkwok



STA. 51235+00 TO STA. 51250+00 PLAN VIEW  
SCALE: 1" = 50'



STA. 51250+00 TO STA. 51265+00 PLAN VIEW  
SCALE: 1" = 50'



FOR EMCP REVIEW  
NOT FOR CONSTRUCTION

IT IS A VIOLATION OF LAW FOR ANY PERSON, UNLESS THEY ARE ACTING UNDER THE DIRECTION OF A LICENSED PROFESSIONAL ENGINEER, ARCHITECT, LANDSCAPE ARCHITECT OR LAND SURVEYOR TO ALTER AN ITEM IN ANY WAY. IF AN ITEM BEARING THE STAMP OF A LICENSED PROFESSIONAL IS ALTERED, THE ALTERING ENGINEER, ARCHITECT, LANDSCAPE ARCHITECT OR LAND SURVEYOR SHALL STAMP THE DOCUMENT AND INCLUDE THE NOTATION "ALTERED BY" FOLLOWED BY THEIR SIGNATURE, THE DATE OF SUCH ALTERATION, AND A SPECIFIC DESCRIPTION OF THE ALTERATION.

----	----	----	----	----	----
----	----	----	----	----	----
----	----	----	----	----	----
----	----	----	----	----	----
----	----	----	----	----	----
----	----	----	----	----	----
A	12/16/2022	FINAL SUBMISSION	MK	NH	
No.	DATE	SUBMITTAL / REVISION DESCRIPTION	DB	APP	

CHAMPLAIN HUDSON POWER EXPRESS  
SEGMENT 9 (PACKAGE 5B) - CSX: SELKIRK RAIL YARD BYPASS  
STA. 51235+00 TO STA. 51265+00  
EROSION AND SEDIMENT CONTROL PLAN

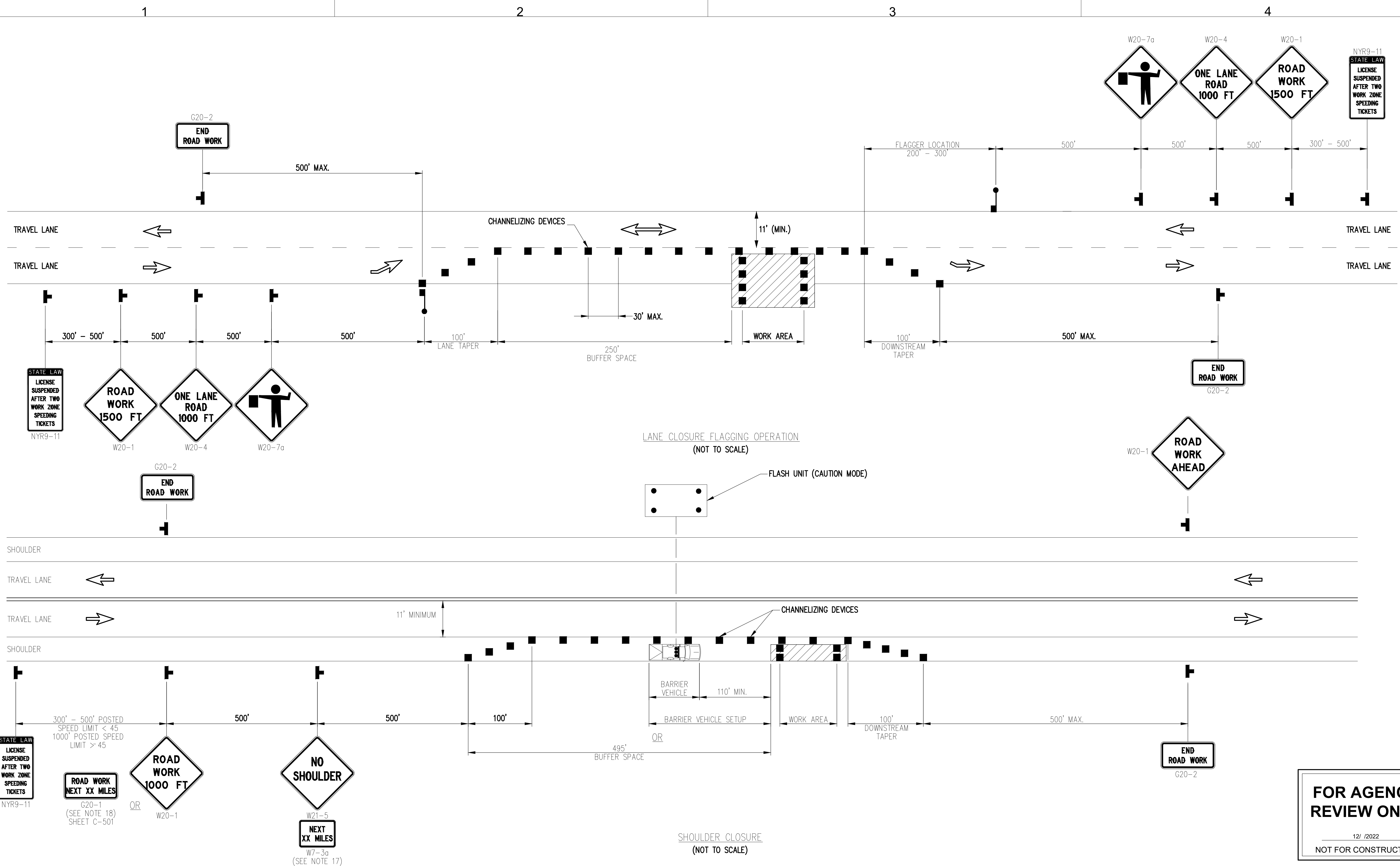
DRAWN BY:	MK	DESIGNED BY:	MK	APPROVED BY:	NH	SCALE	AS SHOWN	DATE	12/16/2022
						REV. NO.	A	SH. NO.	OF

KIEWIT PROJECT NO.	21162
KC PROJECT NO.	120174
DRAWING NO.	C-409
DATE	12/16/2022
SH. NO.	OF







[illegible]

File: T:\21075 CHPE EM&CP\CAD\WORKING DRAWINGS\_PACKAGE 5B\21162\_5B\_C-501 TO C-505.DWG Saved: 12/8/2022 11:36:08 AM Plotted: 12/8/2022 11:50:59 AM Current User: Johanna Lang-Bentley LastSavedBy: Jlangbentley

1

2

3

4

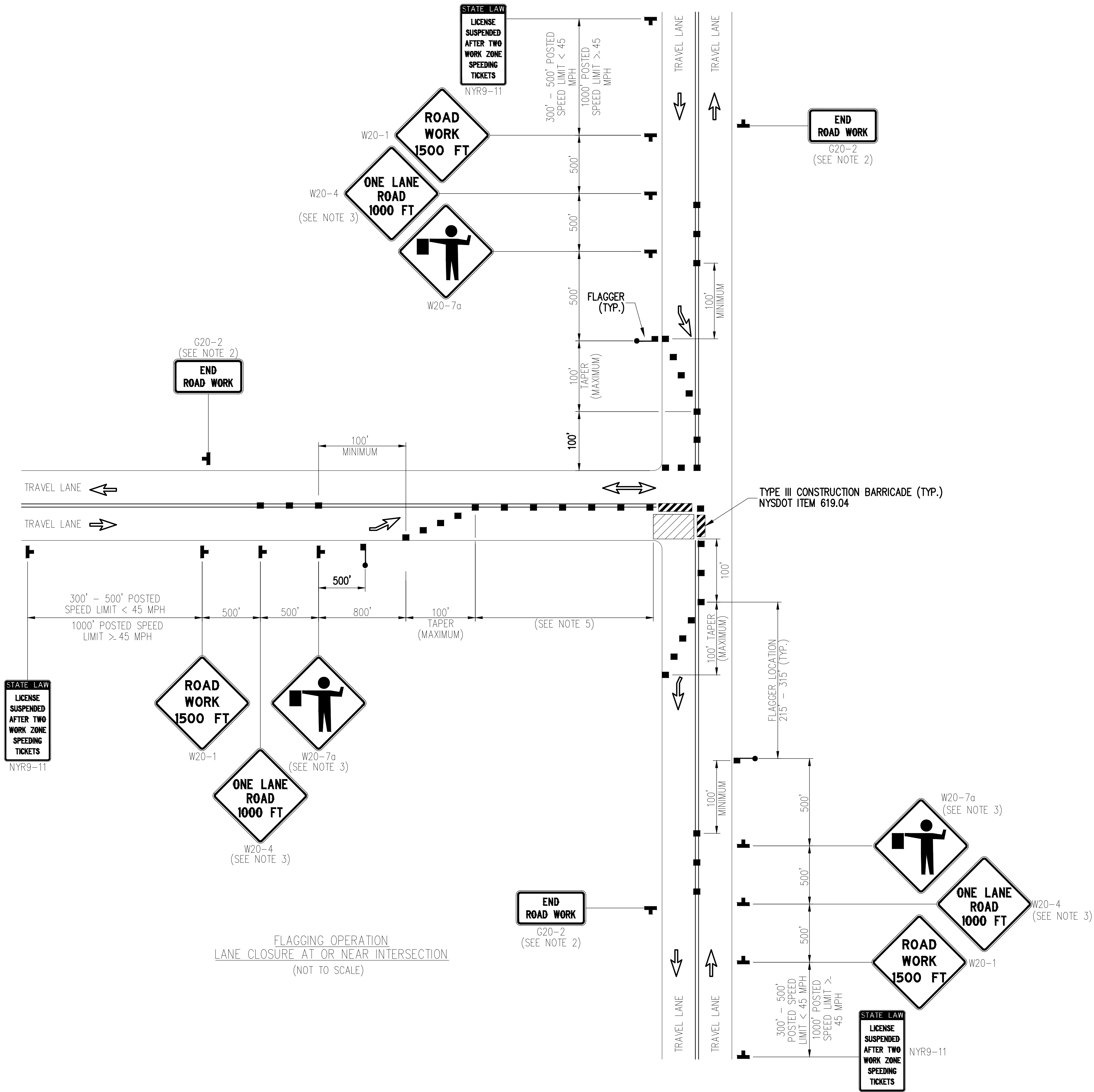
FOR AGENCY  
REVIEW ONLY

12/ /2022

NOT FOR CONSTRUCTION

A

B



NOTES:

1. CHANNELIZING DEVICE SPACING (CENTER TO CENTER) SHALL NOT EXCEED 20' IN THE ACTIVE WORK SPACE.
2. THE END ROAD WORK SIGN (G20-2) SHALL BE PLACED A MAXIMUM OF 500' PAST THE END OF THE WORK SPACE.
3. FLAGGER SIGN (W20-7a) AND ONE LANE ROAD AHEAD SIGN (W20-4) SHALL BE REMOVED, COVERED OR TURNED AWAY FROM ROAD USERS WHEN FLAGGING OPERATIONS ARE NOT OCCURRING.
4. ALL FLAGGERS SHALL USE 24" (MIN.) OCTAGON SHAPED STOP/SLOW PADDLES HAVING 6' STAFF.
5. ADDITIONAL FLAGGERS SHALL BE LOCATED AT ALL INTERSECTIONS AND COMMERCIAL DRIVEWAYS LOCATED WITHIN OR NEAR THE ACTIVE WORK AREA.
6. NO WORK ACTIVITY, EQUIPMENT, OR STORAGE OF VEHICLES, OR MATERIAL SHALL OCCUR WITHIN THE BUFFER SPACE AT ANY TIME.



FOR EMCP REVIEW  
NOT FOR CONSTRUCTION

IT IS A VIOLATION OF LAW FOR ANY PERSON, UNLESS THEY ARE ACTING UNDER THE DIRECTION OF A LICENSED PROFESSIONAL ENGINEER, ARCHITECT, LANDSCAPE ARCHITECT OR LAND SURVEYOR TO ALTER AN ITEM IN ANY WAY. IF AN ITEM BEARING THE STAMP OF A LICENSED PROFESSIONAL IS ALTERED, THE ALTERING ENGINEER, ARCHITECT, LANDSCAPE ARCHITECT OR LAND SURVEYOR SHALL STAMP THE DOCUMENT AND INCLUDE THE NOTATION "ALTERED BY:" FOLLOWED BY THEIR SIGNATURE, THE DATE OF SUCH ALTERATION, AND A SPECIFIC DESCRIPTION OF THE ALTERATION.

No.	DATE	SUBMITTAL / REVISION DESCRIPTION	DB	APP	DRAWN BY:	DESIGNED BY:	APPROVED BY:	SCALE REV. NO.	AS SHOWN	DATE SH. NO.	12/08/2022 XX OF XXX
-----	------	----------------------------------	----	-----	-----------	--------------	--------------	-------------------	----------	-----------------	-------------------------

CHAMPLAIN HUDSON POWER EXPRESS  
SEGMENT 9 (PACKAGE 5B) - CSX: SELKIRK RAIL YARD BYPASS  
WORK ZONE TRAFFIC CONTROL

KIEWIT PROJECT NO.  
21162  
EDR PROJECT NO.  
21075  
DRAWING NO.

C-504

File: I:\21075 CHPE EM&CP\CAD\WORKING DRAWINGS\_PACKAGE 5B\21162\_5B\_C-501 TO C-505.DWG Saved: 12/8/2022 11:36:08 AM Plotted: 12/8/2022 11:51:00 AM Current User: Johanna Lang-Bentley LastSavedBy: Jlangbentley

1

2

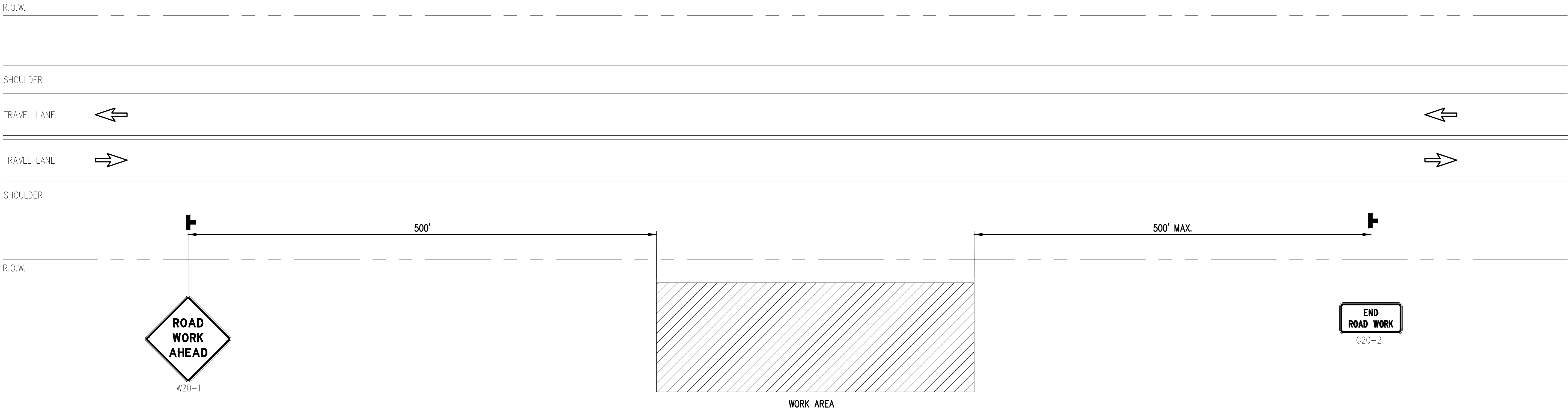
3

4

FOR AGENCY  
REVIEW ONLY

12/ /2022

NOT FOR CONSTRUCTION



FOR EMCP REVIEW  
NOT FOR CONSTRUCTION

IT IS A VIOLATION OF LAW FOR ANY PERSON, UNLESS THEY ARE ACTING UNDER THE DIRECTION OF A LICENSED PROFESSIONAL ENGINEER, ARCHITECT, LANDSCAPE ARCHITECT OR LAND SURVEYOR TO ALTER AN ITEM IN ANY WAY. IF AN ITEM BEARING THE STAMP OF A LICENSED PROFESSIONAL IS ALTERED, THE ALTERING ENGINEER, ARCHITECT, LANDSCAPE ARCHITECT OR LAND SURVEYOR SHALL STAMP THE DOCUMENT AND INCLUDE THE NOTATION "ALTERED BY" FOLLOWED BY THEIR SIGNATURE, THE DATE OF SUCH ALTERATION, AND A SPECIFIC DESCRIPTION OF THE ALTERATION.

No.	DATE	SUBMITTAL / REVISION DESCRIPTION	DB	APP	

CHAMPLAIN HUDSON POWER EXPRESS  
SEGMENT 9 (PACKAGE 5B) - CSX: SELKIRK RAIL YARD BYPASS  
WORK ZONE TRAFFIC CONTROL

DRAWN BY: JLB DESIGNED BY: R APPROVED BY: XX SCALE AS SHOWN REV. NO.

KIEWIT PROJECT NO.	21162
EDR PROJECT NO.	21075
DRAWING NO.	C-505
DATE	12/08/2022
SH.NO.	XX OF XXX