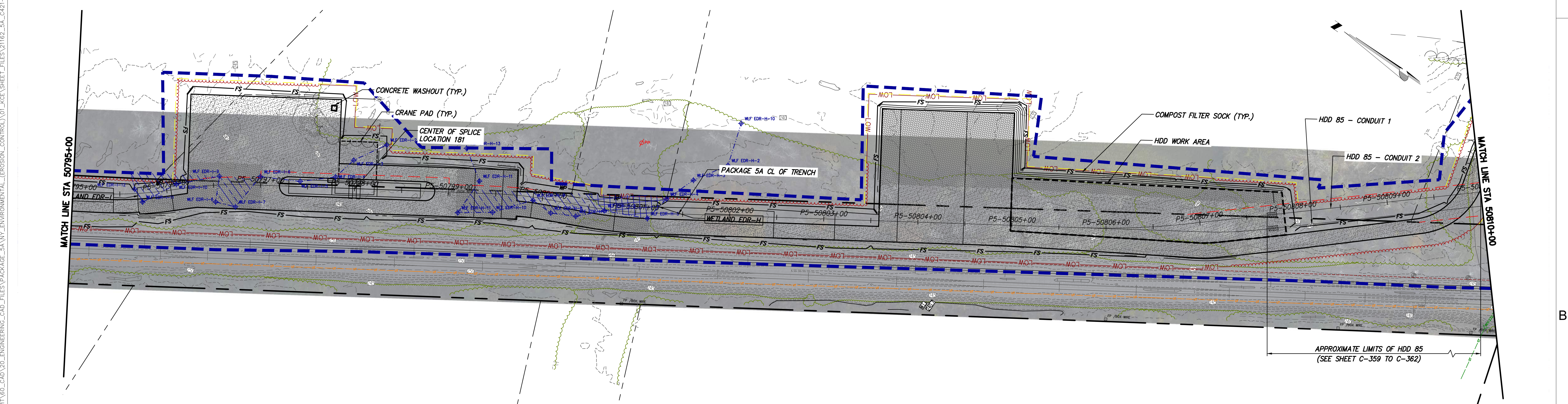




STA. 50780+00 TO STA. 50795+00 PLAN VIEW
SCALE: 1" = 50'



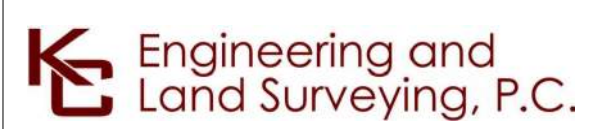
STA. 50795+00 TO 50810+00 PLAN VIEW
SCALE: 1" = 50'



Champlain Hudson
Power Express



Kiewit



Engineering and
Land Surveying, P.C.

**FOR EMCP REVIEW
NOT FOR CONSTRUCTION**

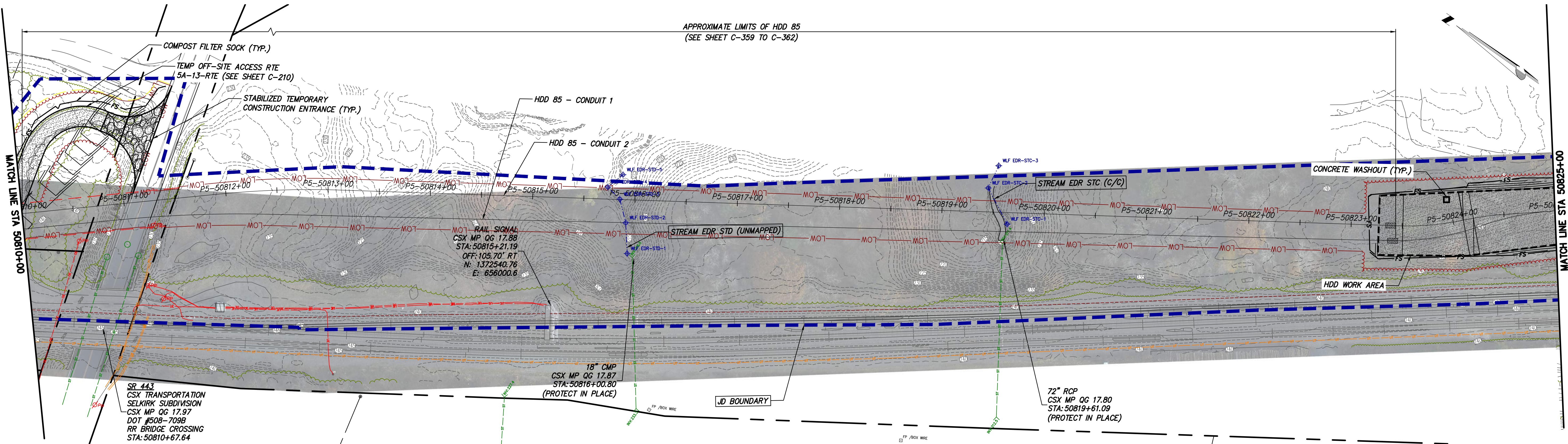
IT IS A VIOLATION OF LAW FOR ANY PERSON, UNLESS THEY ARE ACTING UNDER THE DIRECTION OF A LICENSED PROFESSIONAL ENGINEER, ARCHITECT, LANDSCAPE ARCHITECT OR LAND SURVEYOR TO ALTER AN ITEM IN ANY WAY. IF AN ITEM BEARING THE STAMP OF A LICENSED PROFESSIONAL IS ALTERED, THE ALTERING ENGINEER, ARCHITECT, LANDSCAPE ARCHITECT OR LAND SURVEYOR SHALL STAMP THE DOCUMENT AND INCLUDE THE NOTATION "ALTERED BY" FOLLOWED BY THEIR SIGNATURE, THE DATE OF SUCH ALTERATION, AND A SPECIFIC DESCRIPTION OF THE ALTERATION.

12/16/2022	FINAL SUBMISSION	SC	NH
No.	DATE	SUBMITTAL / REVISION DESCRIPTION	DB APP

CHAMPLAIN HUDSON POWER EXPRESS
SEGMENT 8 (PACKAGE 5A) - CSX: ROTTERDAM - BETHLEHEM
EROSION AND SEDIMENT CONTROL PLAN
STA. 50780+00 TO STA. 50810+00

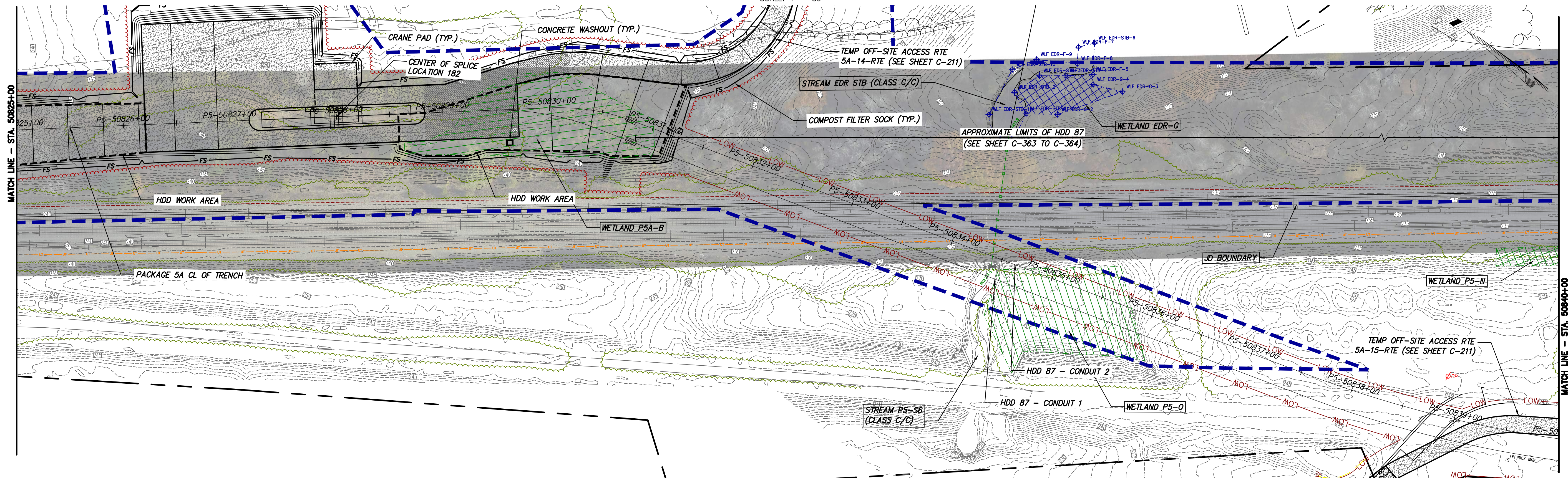
KIEWIT PROJECT NO. 21162	
KC PROJECT NO. 120174	
DRAWING NO. C-427	
DRAWN BY: SC	DESIGNED BY: MK
APPROVED BY: NH	SCALE AS SHOWN
REV. NO.	DATE 12/16/2022
A	SH. NO. OF

File: P:\120174-CHPE-INSTALL-KIEWIT\KIEWIT\20_ENGINEERING_CAD_FILES\PACKAGE_5A\NY_ENVIRONMENTAL_(EROSION_CONTROL)\01_KCE\SHEET_FILES\2162_5A_C421-TO-C430.DWG Saved: 12/15/2022 6:58:59 PM Plotted: 12/15/2022 9:01:43 PM Current User: Samantha Cash LastSavedBy: scash



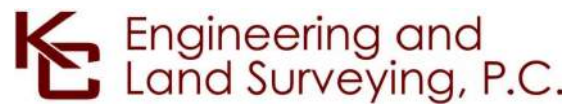
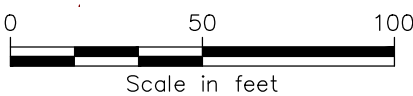
STA. 50810+00 TO STA. 50825+00 PLAN VIEW

SCALE: 1" = 50'



STA. 50825+00 TO STA. 50840+00 PLAN VIEW

SCALE: 1" = 50'



FOR EMCP REVIEW
NOT FOR CONSTRUCTION

IT IS A VIOLATION OF LAW FOR ANY PERSON, UNLESS THEY ARE ACTING UNDER THE DIRECTION OF A LICENSED PROFESSIONAL ENGINEER, ARCHITECT, LANDSCAPE ARCHITECT OR LAND SURVEYOR TO ALTER AN ITEM IN ANY WAY. IF AN ITEM BEARING THE STAMP OF A LICENSED PROFESSIONAL IS ALTERED, THE ALTERING ENGINEER, ARCHITECT, LANDSCAPE ARCHITECT OR LAND SURVEYOR SHALL STAMP THE DOCUMENT AND INCLUDE THE NOTATION "ALTERED BY" FOLLOWED BY THEIR SIGNATURE, THE DATE OF SUCH ALTERATION, AND A SPECIFIC DESCRIPTION OF THE ALTERATION.

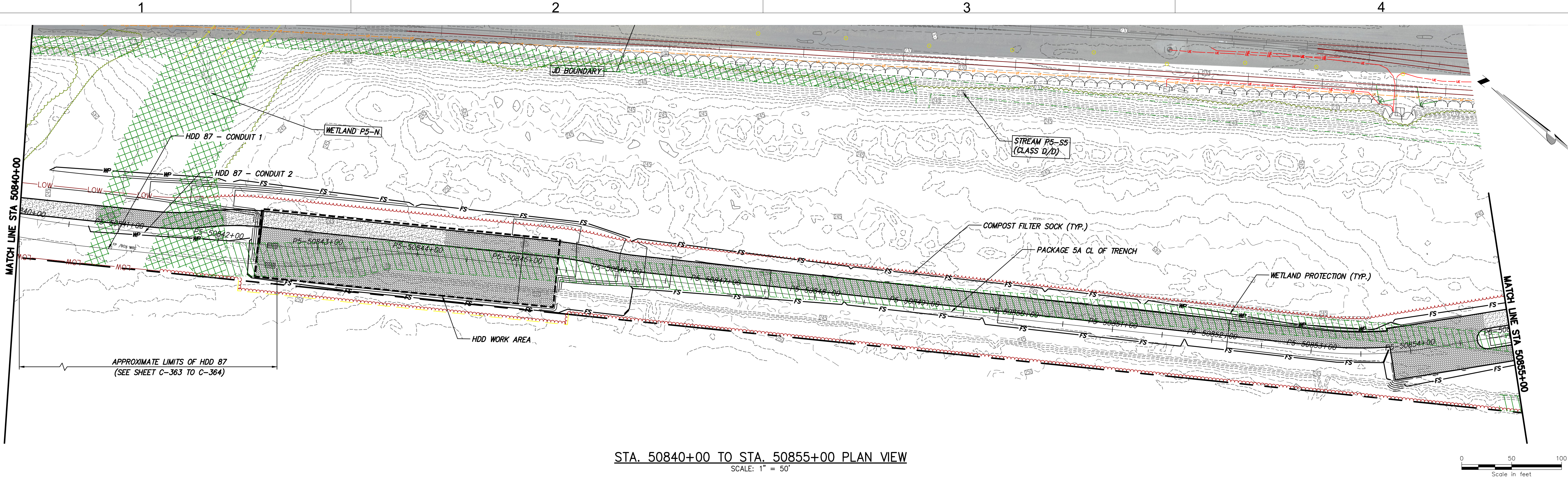
----	----	----	----	----	----
----	----	----	----	----	----
----	----	----	----	----	----
----	----	----	----	----	----
----	----	----	----	----	----
----	----	----	----	----	----
A	12/16/2022	FINAL SUBMISSION	SC	NH	
No.	DATE	SUBMITTAL / REVISION DESCRIPTION	DB	APP	

CHAMPLAIN HUDSON POWER EXPRESS
SEGMENT 8 (PACKAGE 5A) - CSX: ROTTERDAM - BETHLEHEM
EROSION AND SEDIMENT CONTROL PLAN
STA. 50810+00 TO STA. 50840+00

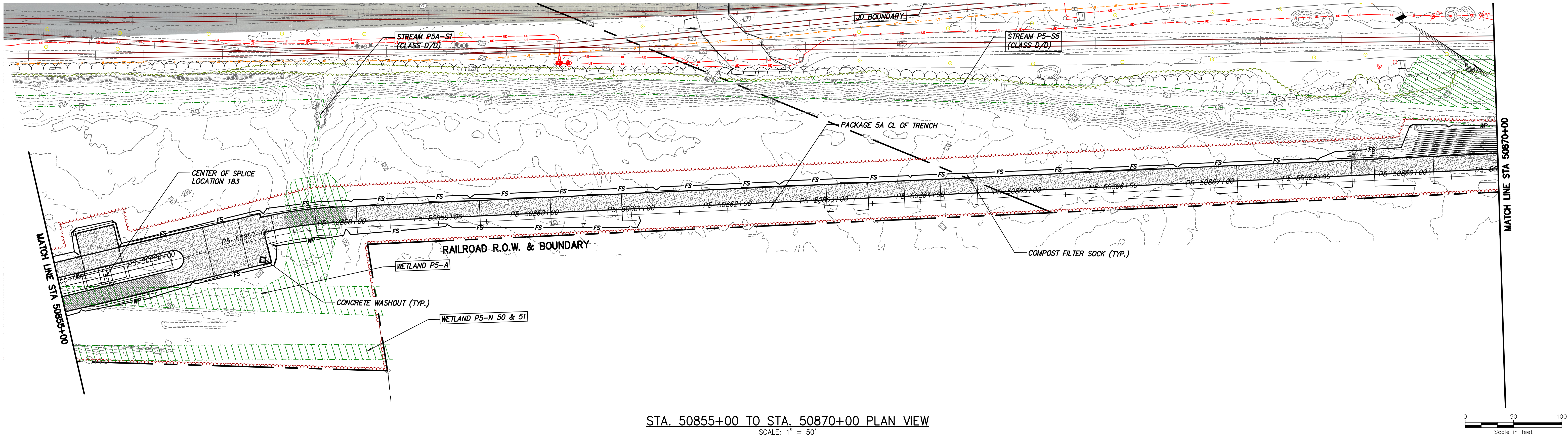
DRAWN BY:	SC	DESIGNED BY:	MK	APPROVED BY:	NH	SCALE	AS SHOWN	DATE	12/16/2022
						REV. NO.	A	SH. NO.	OF

KIEWIT PROJECT NO.	21162
KC PROJECT NO.	120174
DRAWING NO.	C-428
DATE	12/16/2022
SH. NO.	OF

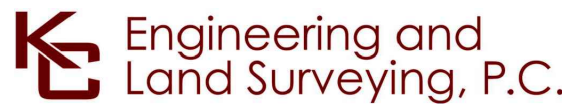
File: P:\120174-CHPE-INSTALL-KIEWIT\60_CAD\20_ENGINEERING_CAD_FILES\PACKAGE_5A\NY_ENVIRONMENTAL (EROSION_CONTROL)\01_KC\SHEET_FILES\21162_5A_C421-TO-C430.DWG Saved: 12/16/2022 11:45:03 AM Current User: Samantha Cash LastSavedBy: thao



STA. 50840+00 TO STA. 50855+00 PLAN VIEW
SCALE: 1" = 50'



STA. 50855+00 TO STA. 50870+00 PLAN VIEW
SCALE: 1" = 50'



FOR EMCP REVIEW
NOT FOR CONSTRUCTION

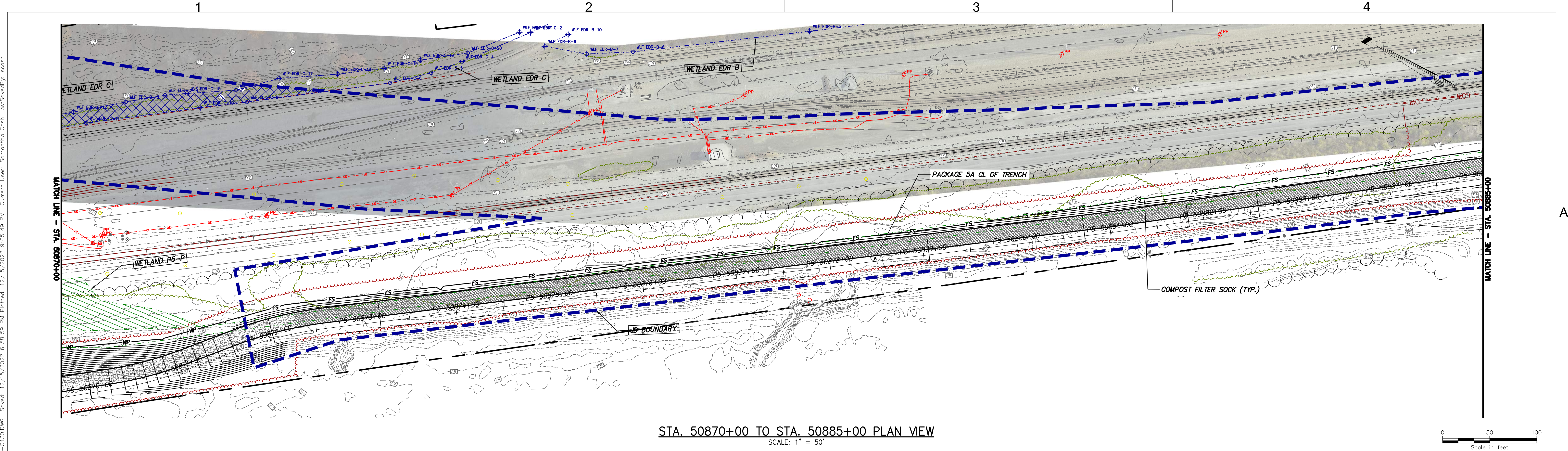
IT IS A VIOLATION OF LAW FOR ANY PERSON, UNLESS THEY ARE ACTING UNDER THE DIRECTION OF A LICENSED PROFESSIONAL ENGINEER, ARCHITECT, LANDSCAPE ARCHITECT OR LAND SURVEYOR TO ALTER AN ITEM IN ANY WAY. IF AN ITEM BEARING THE STAMP OF A LICENSED PROFESSIONAL IS ALTERED, THE ALTERING ENGINEER, ARCHITECT, LANDSCAPE ARCHITECT OR LAND SURVEYOR SHALL STAMP THE DOCUMENT AND INCLUDE THE NOTATION "ALTERED BY" FOLLOWED BY THEIR SIGNATURE, THE DATE OF SUCH ALTERATION, AND A SPECIFIC DESCRIPTION OF THE ALTERATION.

----	----	----	----	----	----
----	----	----	----	----	----
----	----	----	----	----	----
----	----	----	----	----	----
----	----	----	----	----	----
----	----	----	----	----	----
A	12/16/2022	FINAL SUBMISSION	SC	NH	
No.	DATE	SUBMITTAL / REVISION DESCRIPTION	DB	APP	

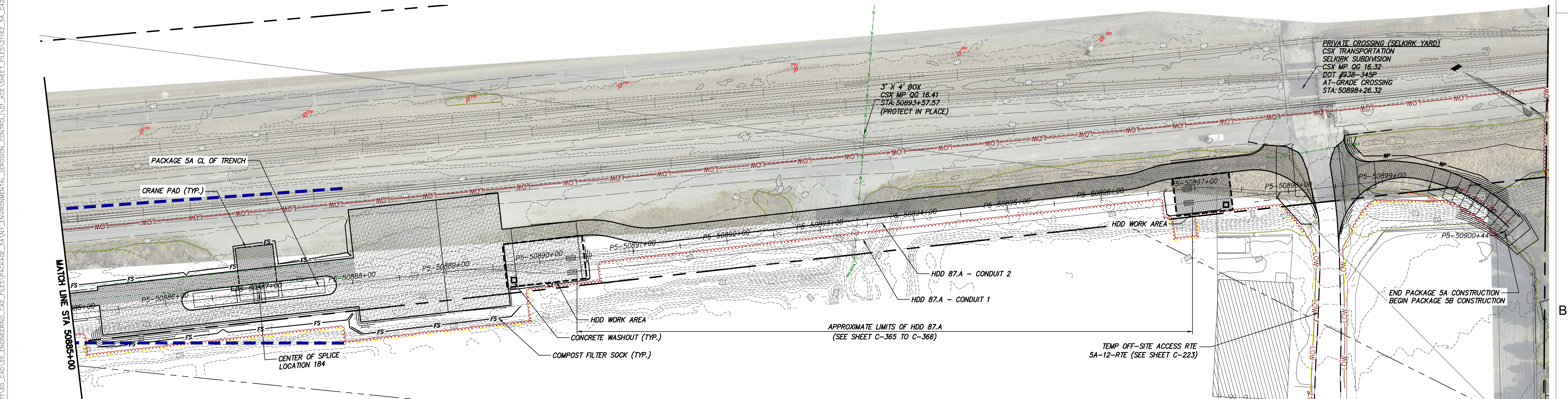
CHAMPLAIN HUDSON POWER EXPRESS
SEGMENT 8 (PACKAGE 5A) - CSX: ROTTERDAM - BETHLEHEM
EROSION AND SEDIMENT CONTROL PLAN
STA. 50840+00 TO STA. 50870+00

DRAWN BY:	SC	DESIGNED BY:	MK	APPROVED BY:	NH	SCALE	AS SHOWN	DATE	12/16/2022
						REV. NO.	A	SH. NO.	OF


KIEWIT PROJECT NO.	21162
KC PROJECT NO.	120174
DRAWING NO.	C-429




STA. 50870+00 TO STA. 50885+00 PLAN VIEW
SCALE: 1" = 50'



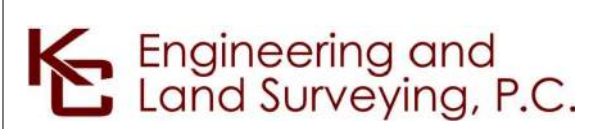
STA. 50885+00 TO STA. 50900+44 PLAN VIEW
SCALE: 1" = 50'



Champlain Hudson
Power Express



Kiewit



Engineering and
Land Surveying, P.C.

FOR EMCP REVIEW
NOT FOR CONSTRUCTION

IT IS A VIOLATION OF LAW FOR ANY PERSON, UNLESS THEY ARE ACTING UNDER THE DIRECTION OF A LICENSED PROFESSIONAL ENGINEER, ARCHITECT, LANDSCAPE ARCHITECT OR LAND SURVEYOR TO ALTER AN ITEM IN ANY WAY. IF AN ITEM BEARING THE STAMP OF A LICENSED PROFESSIONAL IS ALTERED, THE ALTERING ENGINEER, ARCHITECT, LANDSCAPE ARCHITECT OR LAND SURVEYOR SHALL STAMP THE DOCUMENT AND INCLUDE THE NOTATION "ALTERED BY" FOLLOWED BY THEIR SIGNATURE, THE DATE OF SUCH ALTERATION, AND A SPECIFIC DESCRIPTION OF THE ALTERATION.

No.	DATE	SUBMITTAL / REVISION DESCRIPTION	DB	APP
A	12/16/2022	FINAL SUBMISSION	SC	NH

CHAMPLAIN HUDSON POWER EXPRESS
SEGMENT 8 (PACKAGE 5A) - CSX: ROTTERDAM - BETHLEHEM
EROSION AND SEDIMENT CONTROL PLAN
STA. 50885+00 TO STA. 50900+44

KIEWIT PROJECT NO.
21162
KC PROJECT NO.
120174
DRAWING NO.
C-430

DRAWN BY: SC
DESIGNED BY: MK
APPROVED BY: NH

SCALE
REV. NO.

AS SHOWN
A

DATE
12/16/2022
OF

File: T:\21075 CHPE EM&CP\CAD\WORKING DRAWINGS_P5A\21162_5A_0_501 TO C-505.DWG Saved: 12/15/2022 9:20:08 AM Plotted: 12/15/2022 9:29:15 AM Current User: Juhanna Lang-Bentley LastSavedBy: JangBentley

NOTES:

1.

ALL TRAFFIC CONTROL AND WORK AREA PROTECTION SYSTEMS AND DEVICES SHALL BE FABRICATED, INSTALLED, AND MAINTAINED IN ACCORDANCE WITH THE FEDERAL HIGHWAY ADMINISTRATION (FHWA) MANUAL ON UNIFORM TRAFFIC CONTROL DEVICES (MUTCD) FOR STREETS AND HIGHWAYS, LATEST EDITION, EXCEPT AS NOTED.
2.

ALL TEMPORARY TRAFFIC CONTROL AND WORK AREA PROTECTION DEVICES SHALL BE FURNISHED AND INSTALLED BY THE CONTRACTOR UNLESS OTHERWISE NOTED ON THE CONTRACT DRAWINGS AND APPROVED BY THE ENGINEER PRIOR TO COMMENCING WORK.
3.

ALL MAINTENANCE AND PROTECTIONS OF TRAFFIC WORK SHALL CONFORM TO THE CONTRACT DRAWINGS. MAINTENANCE AND PROTECTION OF TRAFFIC SCHEMES SHOWN ON THE CONTRACT DRAWINGS SHALL NOT BE CHANGED BY THE CONTRACTOR WITHOUT THE WRITTEN PERMISSION OF THE ENGINEER.
4.

THE TEMPORARY MAINTENANCE OF TRAFFIC AND WORK AREA PROTECTION DEVICE LOCATIONS SHOWN ON THE CONTRACT DRAWINGS ARE SCHEMATIC EXCEPT AS NOTED. LOCATION OF TRAFFIC CONTROL DEVICES MAY BE MODIFIED TO MEET FIELD CONDITIONS AS APPROVED BY THE ENGINEER.
5.

ALL CLOSURES SHALL BE COORDINATED WITH THE ENGINEER. A SCHEDULE OF WORK SHALL BE SUBMITTED AT LEAST TWO WEEKS IN ADVANCE FOR APPROVAL BY THE ENGINEER.
6.

THERE MAY BE ONGOING CONSTRUCTION CONTRACTS WITHIN THE VICINITY OF THE WORK AREA. DO NOT MOVE, MODIFY, OR RELOCATE ANY ITEM ASSOCIATED WITH THESE CONTRACTS WITHOUT PROPER APPROVAL OF AND COORDINATION WITH THE ENGINEER.
7.

PERFORM WORK IN SUCH A MANNER AND SEQUENCE AS TO INTERFERE AS LITTLE AS POSSIBLE WITH THE PASSAGE OF VEHICLES, PEDESTRIANS, AND OTHER KINDS OF PUBLIC TRAFFIC.
8.

ALL TEMPORARY MAINTENANCE OF TRAFFIC AND WORK AREA PROTECTION SIGN SUPPORTS AND MOUNTING WITHIN THE NYSDOT RIGHT-OF-WAY SHALL BE IN CONFORMANCE WITH NYSDOT STANDARD SHEETS AND STANDARD SPECIFICATIONS.
9.

ALL CONSTRUCTION SIGNS SHALL BE COVERED WITH THICK PLASTIC WHEN THE WORK THEY ARE INTENDED FOR IS NOT IN PROGRESS.
10.

ALL TRAFFIC CONTROL DEVICES SHALL BE INSTALLED PRIOR TO THE COMMENCEMENT OF THE WORK TO WHICH THEY APPLY, AND SHALL BE MAINTAINED BY THE CONTRACTOR THEREAFTER. THE DEVICES SHALL REMAIN IN PLACE AS LONG AS THEY ARE APPLICABLE.
11.

TRAFFIC CONTROL DEVICES SHALL NOT BE PLACED AT ANY LOCATIONS WHERE THEY MAY OBSCURE OR INTERFERE WITH THE MOTORIST VIEW OF APPROACHING, MERGING, OR INTERSECTING TRAFFIC; OBSTRUCT OTHER TEMPORARY OR PERMANENT TRAFFIC CONTROL DEVICES WHICH ARE STILL APPLICABLE TO ROADWAY CONDITIONS; MISLEAD OR MISDIRECT MOTORISTS, OR ARE BLOCKED BY OTHER TEMPORARY OR PERMANENT OBJECTS.
12.

ALL EXISTING ROADWAY ITEMS SUCH AS GUIDE RAILS, PAVEMENT MARKINGS, CURBS, SIGNALS AND SIGNS DAMAGED BY THE CONTRACTOR SHALL BE RESTORED BY THE CONTRACTOR TO THE SATISFACTION OF THE ENGINEER AT NO ADDITIONAL COST.
13.

TRAFFIC LANES AND OTHER AREAS CLOSED BY THE CONTRACTOR DURING PERMITTED WORK HOURS SHALL BE CLEARED OF ALL MATERIAL, EQUIPMENT, AND DEBRIS, AND SAFELY REOPENED TO TRAFFIC BY THE END OF THE WORK PERIOD UNLESS OTHERWISE INDICATED ON THE CONTRACT DRAWINGS.
14.

IF THE CONTRACTOR REQUIRES A LANE CLOSURE TO PERFORM OPERATIONS, THEY MAY DO SO WITH THE APPROVAL OF THE ENGINEER. ANY LANE CLOSURES WILL BE SHORT TERM AND IN ACCORDANCE WITH NYS STANDARD SHEETS UNLESS OTHERWISE SHOWN IN CONTRACT PLANS.
15.

NO WORK ACTIVITY OR STORAGE OF EQUIPMENT, VEHICLES, OR MATERIAL SHOULD OCCUR WITHIN A BUFFER SPACE.
16.

CHANNELIZING DEVICE SPACING (CENTER TO CENTER) SHALL NOT EXCEED 20' IN THE ACTIVE WORK SPACE.
17.

WHEN THE DISTANCE BETWEEN THE ADVANCE WARNING SIGNS AND WORK IS 2 MILES TO 5 MILES, A SUPPLEMENTAL DISTANCE PLAQUE (W7-3A) SHOULD BE USED WITH THE SHOULDER WORK SIGN (W21-5).
18.

THE ROAD WORK NEXT XX MILES SIGN (G20-1) MAY BE USED INSTEAD OF THE ROAD WORK AHEAD SIGN (W20-1) IF WORK LOCATIONS OCCUR OVER A DISTANCE OF MORE THAN 2 MILES.
19.

ALL ADDITIONAL TEMPORARY SIGNAGE, NOT COVERED IN FHWA MUTCD, SHALL COMPLY WITH NYS SUPPLEMENT TO MANUAL OF UNIFORM TRAFFIC CONTROL DEVICES.
20.

DURING NON-WORK HOURS, LEAVE DRUMS AND TCB IN PLACE, OR AS DIRECTED AT THE ENGINEER.
21.

DURING WINTER MORATORIUM, COVER EXCAVATION WITH TEMPORARY ASPHALT AND OPEN ALL LANES TO TRAFFIC.
22.

THE WZTC DETAILS CONTAINED IN THE CONTRACT PLANS SUPPLEMENT THE CURRENT NYSDOT STANDARD SHEETS. REFERENCE SHALL BE MADE TO THE APPLICABLE NYSDOT STANDARD SHEETS FOR ALL NOTES AND TABLES. THE LATEST REVISIONS OF THE STANDARD SHEETS MAINTAINED BY NYSDOT, WHICH ARE CURRENT ON THE DATE OF ADVERTISEMENT FOR BIDS, SHALL BE CONSIDERED TO BE IN EFFECT. ALL PAY ITEMS AND WORK CONTAINED IN THE CONTRACT ANY ANY ADDITIONAL PAY ITEMS AND WORK ENCOUNTERED DURING THE COURSE OF THE CONTRACT SHALL BE SUBJECT TO THE APPLICABLE STANDARD SHEET(S) UNLESS OTHERWISE SPECIFIED IN THE CONTRACT DOCUMENTS.
23.

MAINTAIN SAFE AND ADEQUATE ACCESS FOR INTERSECTING ROADWAYS, HOMES, AND BUSINESSES, AT ALL TIMES, TO THE SATISFACTION OF THE ENGINEER.
24.

ACCESS TO RESIDENTIAL AND COMMERCIAL DRIVEWAYS SHALL BE MAINTAINED AT ALL TIMES. UNLESS OTHER AGREEMENTS SUITABLE TO THE PROPERTY OWNERS CAN BE MADE, PROPERTY OWNERS WHOSE DRIVEWAYS WILL BE MADE INACCESSIBLE SHALL BE NOTIFIED BY THE CONTRACTOR AT LEAST 24 HOURS PRIOR TO RESTRICTING USE OF THE DRIVEWAY. THE CONTRACTOR SHALL MAINTAIN ACCESS TO COMMERCIAL DRIVEWAYS AT ALL TIMES WHEN A FACILITY IS IN USE. FOR MULTIPLE ACCESS PROPERTIES, ONLY ONE DRIVEWAY MAY BE CLOSED AT ANY ONE TIME. ACCESS SHALL BE RESTORED TO ALL DRIVEWAYS AS SOON AS POSSIBLE, OR AS DIRECTED BY THE ENGINEER.
25.

THE CONTRACTOR'S ATTENTION IS DIRECTED TO THE FACT THAT THE FOLLOWING HOLIDAY WORK RESTRICTIONS ARE APPLICABLE TO THIS PROJECT. DURING THESE HOLIDAY PERIODS, THE CONTRACTOR WILL NOT BE ALLOWED TO PERFORM ANY WORK THAT WILL BE DISRUPTIVE TO TRAFFIC, INCLUDING BUT NOT LIMITED TO LANE CLOSURES. LANE CLOSURES WILL NOT BE PERMITTED DURING THE FOLLOWING STATE RECOGNIZED HOLIDAYS:
- CHRISTMAS DAY

–

SUNDAY, DECEMBER 25, 2022

•

NEW YEAR'S DAY

–

SUNDAY, JANUARY 1, 2023

•

MEMORIAL DAY

–

MONDAY, MAY 29, 2023

•

INDEPENDENCE DAY

–

TUESDAY, JULY 4, 2023

•

LABOR DAY

–

MONDAY, SEPTEMBER 4, 2023

•

THANKSGIVING DAY

–

THURSDAY, NOVEMBER 23, 2023

•

CHRISTMAS DAY

–

MONDAY, DECEMBER 25, 2023

•

NEW YEAR'S DAY

–

SUNDAY, JANUARY 1, 2024

•

MEMORIAL DAY

–

MONDAY, MAY 27, 2024

•

INDEPENDENCE DAY

–

TUESDAY, JULY 4, 2024

•

LABOR DAY

–

MONDAY, SEPTEMBER 2, 2024

•

THANKSGIVING DAY

–

THURSDAY, NOVEMBER 28, 2024

•

CHRISTMAS DAY

–

MONDAY, DECEMBER 25, 2024

•

NEW YEAR'S DAY

–

SUNDAY, JANUARY 1, 2025

•

MEMORIAL DAY

–

MONDAY, MAY 26, 2025

•

INDEPENDENCE DAY

–

TUESDAY, JULY 4, 2025

•

LABOR DAY

–

MONDAY, SEPTEMBER 1, 2025

•

THANKSGIVING DAY

–

THURSDAY, NOVEMBER 27, 2025

•

CHRISTMAS DAY

–

MONDAY, DECEMBER 25, 2025
26.

LANE CLOSURES SHALL BE SUSPENDED AS FOLLOWS:
- BEGINNING 6AM, FRIDAY DECEMBER 23, 2022 AND ENDING 6AM, TUESDAY DECEMBER 27, 2022

•

BEGINNING 6AM, FRIDAY DECEMBER 30, 2022 AND ENDING 6AM, TUESDAY JANUARY 3, 2023

•

BEGINNING 6AM, FRIDAY MAY 26, 2023 AND ENDING 6AM, TUESDAY MAY 30, 2023

•

BEGINNING 6AM, SATURDAY JULY 1, 2023 AND ENDING 6AM, WEDNESDAY JULY 5, 2023

•

BEGINNING 6AM, FRIDAY SEPTEMBER 1, 2023 AND ENDING 6AM, TUESDAY SEPTEMBER 5, 2023

•

BEGINNING 6AM, WEDNESDAY NOVEMBER 22, 2023 AND ENDING 6AM, MONDAY NOVEMBER 27, 2023

•

BEGINNING 6AM, FRIDAY DECEMBER 22, 2023 AND ENDING 6AM, TUESDAY DECEMBER 26, 2023

•

BEGINNING 6AM, SUNDAY DECEMBER 30, 2023 AND ENDING 6AM, WEDNESDAY JANUARY 3, 2024

•

BEGINNING 6AM, FRIDAY MAY 24, 2024 AND ENDING 6AM, TUESDAY MAY 28, 2024

•

BEGINNING 6AM, MONDAY JULY 1, 2024 AND ENDING 6AM, FRIDAY JULY 5, 2024

•

BEGINNING 6AM, FRIDAY AUGUST 30, 2024 AND ENDING 6AM, TUESDAY SEPTEMBER 3, 2024

•

BEGINNING 6AM, WEDNESDAY NOVEMBER 27, 2024 AND ENDING 6AM, MONDAY DECEMBER 2, 2024

•

BEGINNING 6AM, FRIDAY DECEMBER 20, 2024 AND ENDING 6AM, THURSDAY DECEMBER 26, 2024

•

BEGINNING 6AM, TUESDAY DECEMBER 30, 2024 AND ENDING 6AM, FRIDAY JANUARY 3, 2025

•

BEGINNING 6AM, FRIDAY MAY 23, 2025 AND ENDING 6AM, TUESDAY MAY 27, 2025

•

BEGINNING 6AM, THURSDAY JULY 3, 2025 AND ENDING 6AM, MONDAY JULY 7, 2025

•

BEGINNING 6AM, FRIDAY AUGUST 29, 2025 AND ENDING 6AM, TUESDAY SEPTEMBER 2, 2025

•

BEGINNING 6AM, WEDNESDAY NOVEMBER 26, 2025 AND ENDING 6AM, MONDAY DECEMBER 1, 2025

•

BEGINNING 6AM, WEDNESDAY DECEMBER 24, 2025 AND ENDING 6AM, MONDAY DECEMBER 29, 2025

FOR EMCP REVIEW
NOT FOR CONSTRUCTION

IT IS A VIOLATION OF LAW FOR ANY PERSON, UNLESS THEY ARE ACTING UNDER THE DIRECTION OF A LICENSED PROFESSIONAL ENGINEER, ARCHITECT, LANDSCAPE ARCHITECT OR LAND SURVEYOR TO ALTER AN ITEM IN ANY WAY. IF AN ITEM BEARING THE STAMP OF A LICENSED PROFESSIONAL IS ALTERED, THE ALTERING ENGINEER, ARCHITECT, LANDSCAPE ARCHITECT OR LAND SURVEYOR SHALL STAMP THE DOCUMENT AND INCLUDE THE NOTATION "ALTERED BY" FOLLOWED BY THEIR SIGNATURE, THE DATE OF SUCH ALTERATION, AND A SPECIFIC DESCRIPTION OF THE ALTERATION.

E	12/16/2022	FINAL SUBMISSION	ZR	JLB
D	11/11/2022	DRAFT FINAL SUBMISSION	ZR	JLB
C	6/6/2022	60% DESIGN SUBMISSION	ZR	JLB
B	2/11/2022	PRELIMINARY DESIGN DEVELOPMENT	ZR	JLB
A	1/24/2022	PRELIMINARY PROGRESS	ZR	JLB
No.	DATE	SUBMITTAL / REVISION DESCRIPTION	DB	APP

CHAMPLAIN HUDSON POWER EXPRESS
SEGMENT 8 (PACKAGE 5A) - CSX: ROTTERDAM - BETHLEHEM

WORK ZONE TRAFFIC CONTROL NOTES,
LEGEND, AND ABBREVIATIONS

DRAWN BY:	ZR	DESIGNED BY:	JLB	APPROVED BY:	XX	SCALE	AS SHOWN	DATE	12/16/2022
						REV. NO.		E	SH.NO. OF

FOR AGENCY
REVIEW ONLY

12/15/2022
NOT FOR CONSTRUCTION

LEGEND

- TEMPORARY SIGN
- TEMPORARY TRAFFIC SIGNAL UNIT
- WORK ZONE
- DRUM
- TCB (UNPINNED)
- FLAGGER
- FLAG TREE
- WORK VEHICLE WITH TRUCK MOUNTED ATTENUATOR
- FLASH UNIT (LEFT ARROW)
- FLASH UNIT (CAUTION MODE)
- TYPE III BARRICADE
- TRAILER UNIT
- WARNING LIGHT ON SIGN
- TEMPORARY TRAFFIC FLOW ARROW

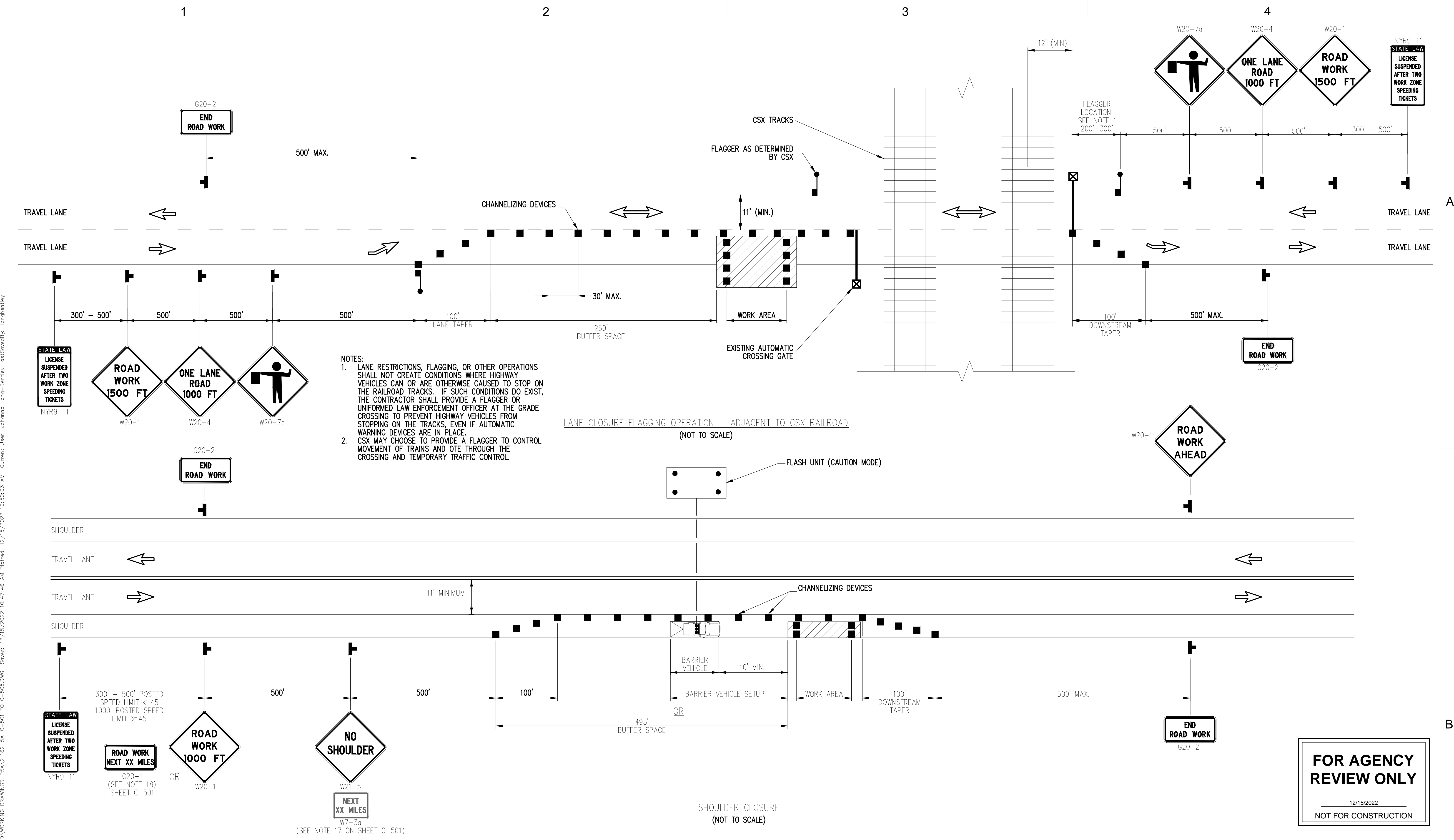
ABBREVIATIONS


AADT	AVERAGE ANNUAL DAILY TRAFFIC
CR	COUNTY ROUTE
DHV	DIRECTIONAL HOURLY VOLUME
FASU	FLASHING ARROW SIGN UNIT
FHWA	FEDERAL HIGHWAY ADMINISTRATION
M.P.	MILE POST
MAX.	MAXIMUM
MIN.	MINIMUM
MPH	MILES PER HOUR
MUTCD	MANUAL ON UNIFORM TRAFFIC CONTROL DEVICES
NYS	NEW YORK STATE
NYSDOT	NEW YORK STATE DEPARTMENT OF TRANSPORTATION
RTE	ROUTE
TCB	TEMPORARY CONCRETE BARRIER
STA.	STATION




KIEWIT PROJECT NO.	21162
EDR PROJECT NO.	21075
DRAWING NO.	C-501
DATE	12/16/2022
E	SH.NO. OF

File: T:\21075 CHPE EM&CP\CAD\WORKING DRAWINGS_P5A\21162_5A_0-501 TO C-505.DWG Saved: 12/15/2022 10:47:46 AM Plotted: 12/15/2022 10:50:03 AM Current User: Johanna Long-Bentley LastSavedBy: jlangbentley






Champlain Hudson Power Express



Kiewit



a better environment

FOR EMCP REVIEW
NOT FOR CONSTRUCTION

IT IS A VIOLATION OF LAW FOR ANY PERSON, UNLESS THEY ARE ACTING UNDER THE DIRECTION OF A LICENSED PROFESSIONAL ENGINEER, ARCHITECT, LANDSCAPE ARCHITECT OR LAND SURVEYOR TO ALTER AN ITEM IN ANY WAY. IF AN ITEM BEARING THE STAMP OF A LICENSED PROFESSIONAL IS ALTERED, THE ALTERING ENGINEER, ARCHITECT, LANDSCAPE ARCHITECT OR LAND SURVEYOR SHALL STAMP THE DOCUMENT AND INCLUDE THE NOTATION "ALTERED BY" FOLLOWED BY THEIR SIGNATURE, THE DATE OF SUCH ALTERATION, AND A SPECIFIC DESCRIPTION OF THE ALTERATION.

No.	DATE	SUBMITTAL / REVISION DESCRIPTION	DB	APP
E	12/16/2022	FINAL SUBMISSION	ZR	JLB
D	11/11/2022	DRAFT FINAL SUBMISSION	ZR	JLB
C	6/6/2022	60% DESIGN SUBMISSION	ZR	JLB
B	2/11/2022	PRELIMINARY DESIGN DEVELOPMENT	ZR	JLB
A	1/24/2022	PRELIMINARY PROGRESS	ZR	JLB

CHAMPLAIN HUDSON POWER EXPRESS
SEGMENT 8 (PACKAGE 5A) - CSX: ROTTERDAM - BETHLEHEM
WORK ZONE TRAFFIC CONTROL

DRAWN BY: ZR

DESIGNED BY: JLB

APPROVED BY: XX

SCALE AS SHOWN
REV. NO.

KIEWIT PROJECT NO.
21162

EDR PROJECT NO.
21075

DRAWING NO.
C-503

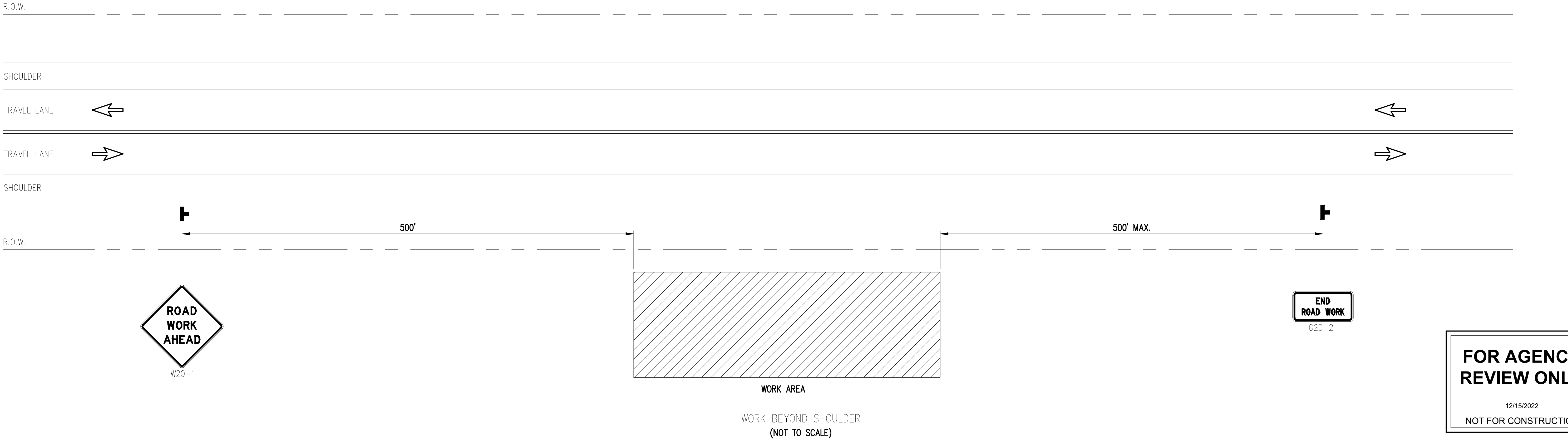
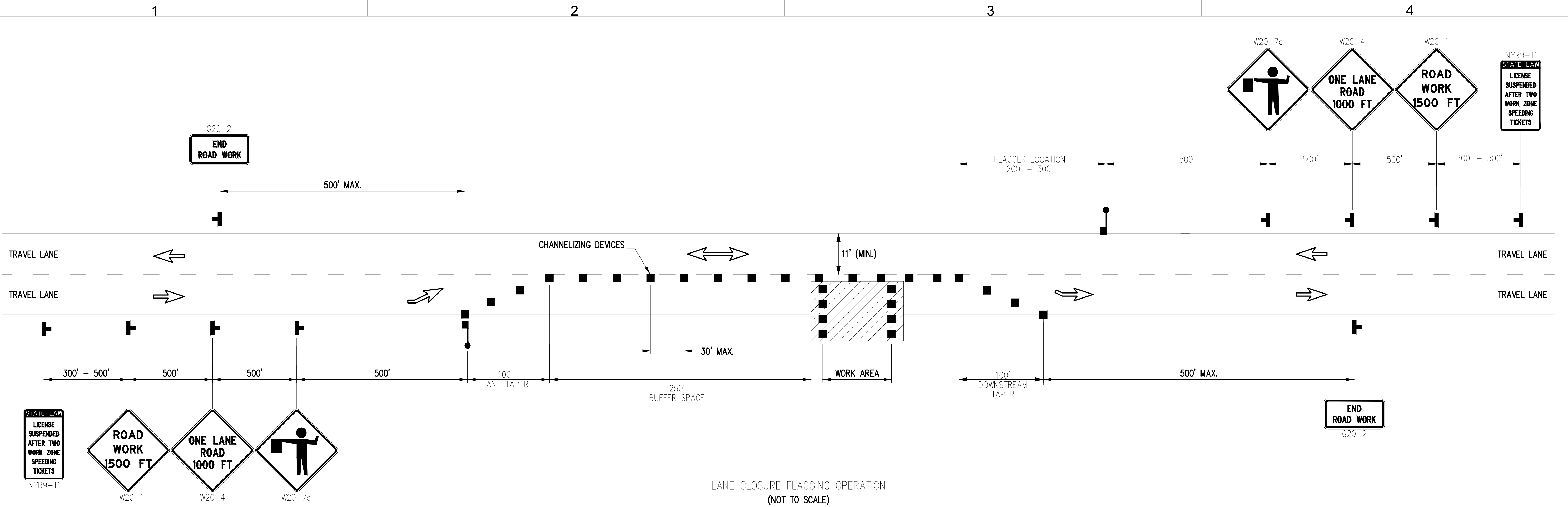
DATE 12/16/2022
E SH.NO. OF

FOR AGENCY
REVIEW ONLY

12/15/2022

NOT FOR CONSTRUCTION

File: I:\21075 CHPE EM&CP\CAD\WORKING DRAWINGS_P5A\21162_5A_0-501 TO 0-505.DWG Saved: 12/15/2022 9:20:08 AM Plotted: 12/15/2022 9:29:18 AM Current User: Juhanna Lang-Bentley LastSavedBy: Jangbentley



FOR EMCP REVIEW
NOT FOR CONSTRUCTION

IT IS A VIOLATION OF LAW FOR ANY PERSON, UNLESS THEY ARE ACTING UNDER THE DIRECTION OF A LICENSED PROFESSIONAL ENGINEER, ARCHITECT, LANDSCAPE ARCHITECT OR LAND SURVEYOR TO ALTER AN ITEM IN ANY WAY. IF AN ITEM BEARING THE STAMP OF A LICENSED PROFESSIONAL IS ALTERED, THE ALTERING ENGINEER, ARCHITECT, LANDSCAPE ARCHITECT OR LAND SURVEYOR SHALL STAMP THE DOCUMENT AND INCLUDE THE NOTATION "ALTERED BY" FOLLOWED BY THEIR SIGNATURE, THE DATE OF SUCH ALTERATION, AND A SPECIFIC DESCRIPTION OF THE ALTERATION.

E	12/16/2022	FINAL SUBMISSION	ZR	JLB	
D	11/11/2022	DRAFT FINAL SUBMISSION	ZR	JLB	
C	6/6/2022	60% DESIGN SUBMISSION	ZR	JLB	
B	2/11/2022	PRELIMINARY DESIGN DEVELOPMENT	ZR	JLB	
A	1/24/2022	PRELIMINARY PROGRESS	ZR	JLB	
No.	DATE	SUBMITTAL / REVISION DESCRIPTION	DB	APP	

CHAMPLAIN HUDSON POWER EXPRESS
SEGMENT 8 (PACKAGE 5A) - CSX: ROTTERDAM - BETHLEHEM
WORK ZONE TRAFFIC CONTROL

DRAWN BY: ZR DESIGNED BY: JLB APPROVED BY: XX SCALE AS SHOWN REV. NO. DATE 12/16/2022 OF

KIEWIT PROJECT NO.	21162
EDR PROJECT NO.	21075
DRAWING NO.	C-504
DATE	12/16/2022
SH.NO.	OF

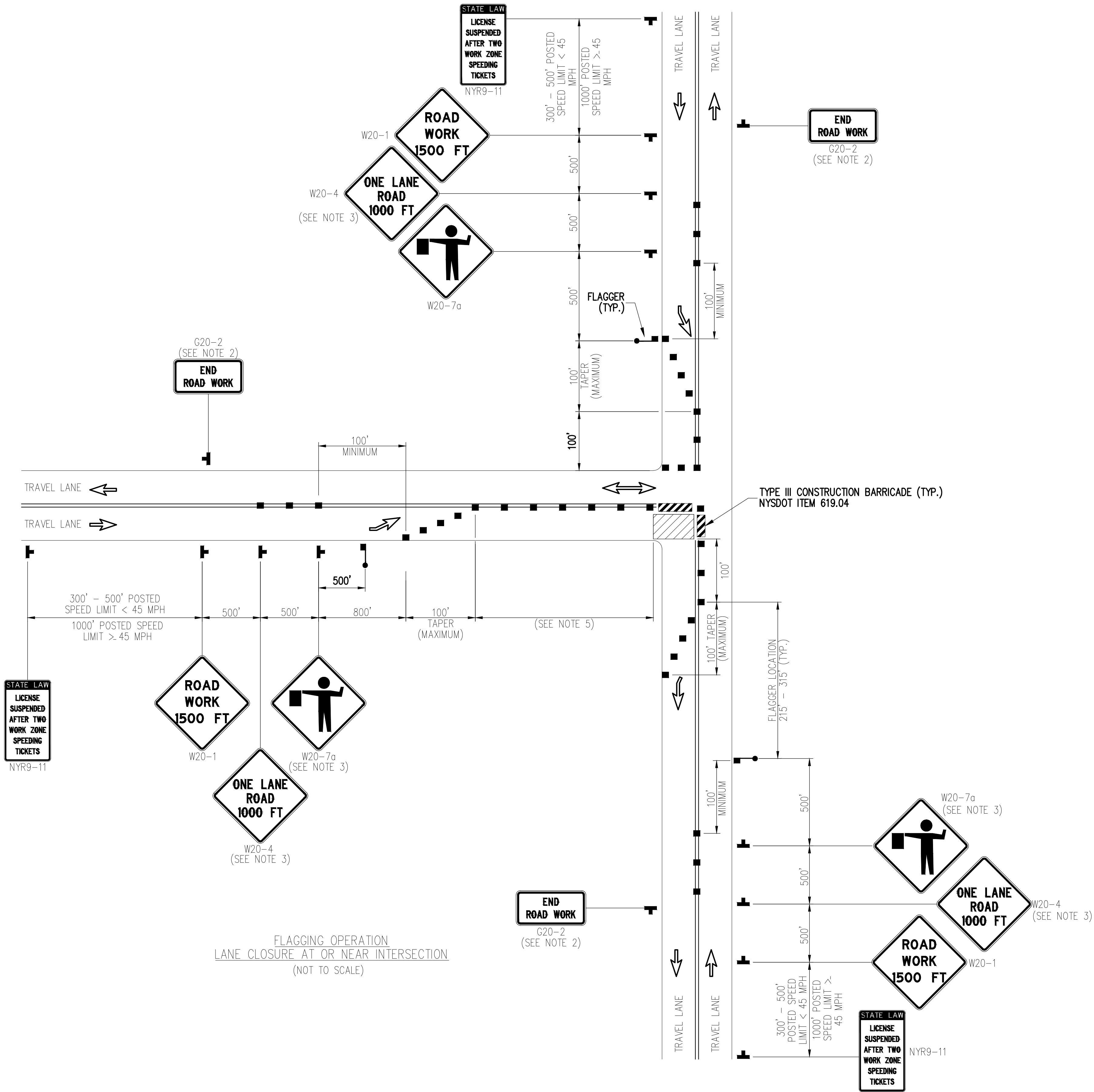
File: T:\21075 CHPE EM&CP\CAD\WORKING DRAWINGS_P5A\21162_5A_0-501 TO C-505.DWG Saved: 12/15/2022 9:20:08 AM Plotted: 12/15/2022 9:29:19 AM Current User: Juhanna Lang-Bentley LastSavedBy: Jlangbentley

1

2

3

4



FOR AGENCY
REVIEW ONLY

12/15/2022
NOT FOR CONSTRUCTION

NOTES:

1. CHANNELIZING DEVICE SPACING (CENTER TO CENTER) SHALL NOT EXCEED 20' IN THE ACTIVE WORK SPACE.
2. THE END ROAD WORK SIGN (G20-2) SHALL BE PLACED A MAXIMUM OF 500' PAST THE END OF THE WORK SPACE.
3. FLAGGER SIGN (W20-7a) AND ONE LANE ROAD AHEAD SIGN (W20-4) SHALL BE REMOVED, COVERED OR TURNED AWAY FROM ROAD USERS WHEN FLAGGING OPERATIONS ARE NOT OCCURRING.
4. ALL FLAGGERS SHALL USE 24" (MIN.) OCTAGON SHAPED STOP/SLOW PADDLES HAVING 6' STAFF.
5. ADDITIONAL FLAGGERS SHALL BE LOCATED AT ALL INTERSECTIONS AND COMMERCIAL DRIVEWAYS LOCATED WITHIN OR NEAR THE ACTIVE WORK AREA.
6. NO WORK ACTIVITY, EQUIPMENT, OR STORAGE OF VEHICLES, OR MATERIAL SHALL OCCUR WITHIN THE BUFFER SPACE AT ANY TIME.



FOR EMCP REVIEW
NOT FOR CONSTRUCTION

IT IS A VIOLATION OF LAW FOR ANY PERSON, UNLESS THEY ARE ACTING UNDER THE DIRECTION OF A LICENSED PROFESSIONAL ENGINEER, ARCHITECT, LANDSCAPE ARCHITECT OR LAND SURVEYOR TO ALTER AN ITEM IN ANY WAY. IF AN ITEM BEARING THE STAMP OF A LICENSED PROFESSIONAL IS ALTERED, THE ALTERING ENGINEER, ARCHITECT, LANDSCAPE ARCHITECT OR LAND SURVEYOR SHALL STAMP THE DOCUMENT AND INCLUDE THE NOTATION "ALTERED BY" FOLLOWED BY THEIR SIGNATURE, THE DATE OF SUCH ALTERATION, AND A SPECIFIC DESCRIPTION OF THE ALTERATION.

No.	DATE	SUBMITTAL / REVISION DESCRIPTION	DB	APP
E	12/16/2022	FINAL SUBMISSION	ZR	JLB
D	11/11/2022	DRAFT FINAL SUBMISSION	ZR	JLB
C	6/6/2022	60% DESIGN SUBMISSION	ZR	JLB
B	2/11/2022	PRELIMINARY DESIGN DEVELOPMENT	ZR	JLB
A	1/24/2022	PRELIMINARY PROGRESS	ZR	JLB

CHAMPLAIN HUDSON POWER EXPRESS
SEGMENT 8 (PACKAGE 5A) - CSX: ROTTERDAM - BETHLEHEM
WORK ZONE TRAFFIC CONTROL

DRAWN BY:	ZR	DESIGNED BY:	JLB	APPROVED BY:	XX	SCALE	AS SHOWN	DATE	12/16/2022
						REV. NO.		E SH. NO.	OF

KIEWIT PROJECT NO.
21162
EDR PROJECT NO.
21075
DRAWING NO.

C-505

