

## Appendix B

---

# Environmental Management and Construction Plan Filing Notices



## **NOTICE OF SUBMISSION OF ENVIRONMENTAL MANAGEMENT AND CONSTRUCTION PLAN FOR CHAMPLAIN HUDSON POWER EXPRESS**

On or about September 23, 2022, CHPE LLC and its wholly-owned subsidiary, CHPE Properties, Inc. (collectively referred to as “CHPE”) intend to submit an Environmental Management & Construction Plan (“EM&CP”) for the Stony Point Transitional Horizontal Directional Drill (“HDD”) portion of the proposed Champlain Hudson Power Express (“CHPE”) Project. The Stony Point Transitional HDD consists of a transitional horizontal directional drill in the Town of Stony Point, Rockland County, which will connect an overland segment of the CHPE line (Stony Point to Haverstraw Overland Segment 12) with the Lower Hudson River Marine Segment (Segment 20), and the installation of conduits in this location. This EM&CP also includes a temporary laydown yard at Tomkins Cove, also in the Town of Stony Point.

On April 18, 2013, the NYS Public Service Commission (Commission) issued to CHPE a certificate of environmental compatibility and public need (Certificate), pursuant to Article VII of the Public Service Law (PSL), to construct and operate the CHPE Project. The Certificate requires that, prior to construction of any portion of the Project, CHPE submit an EM&CP for review and comment.

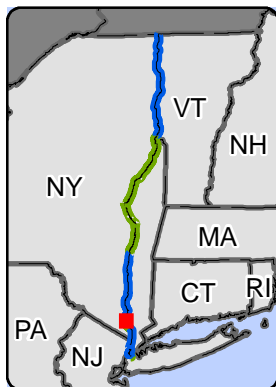
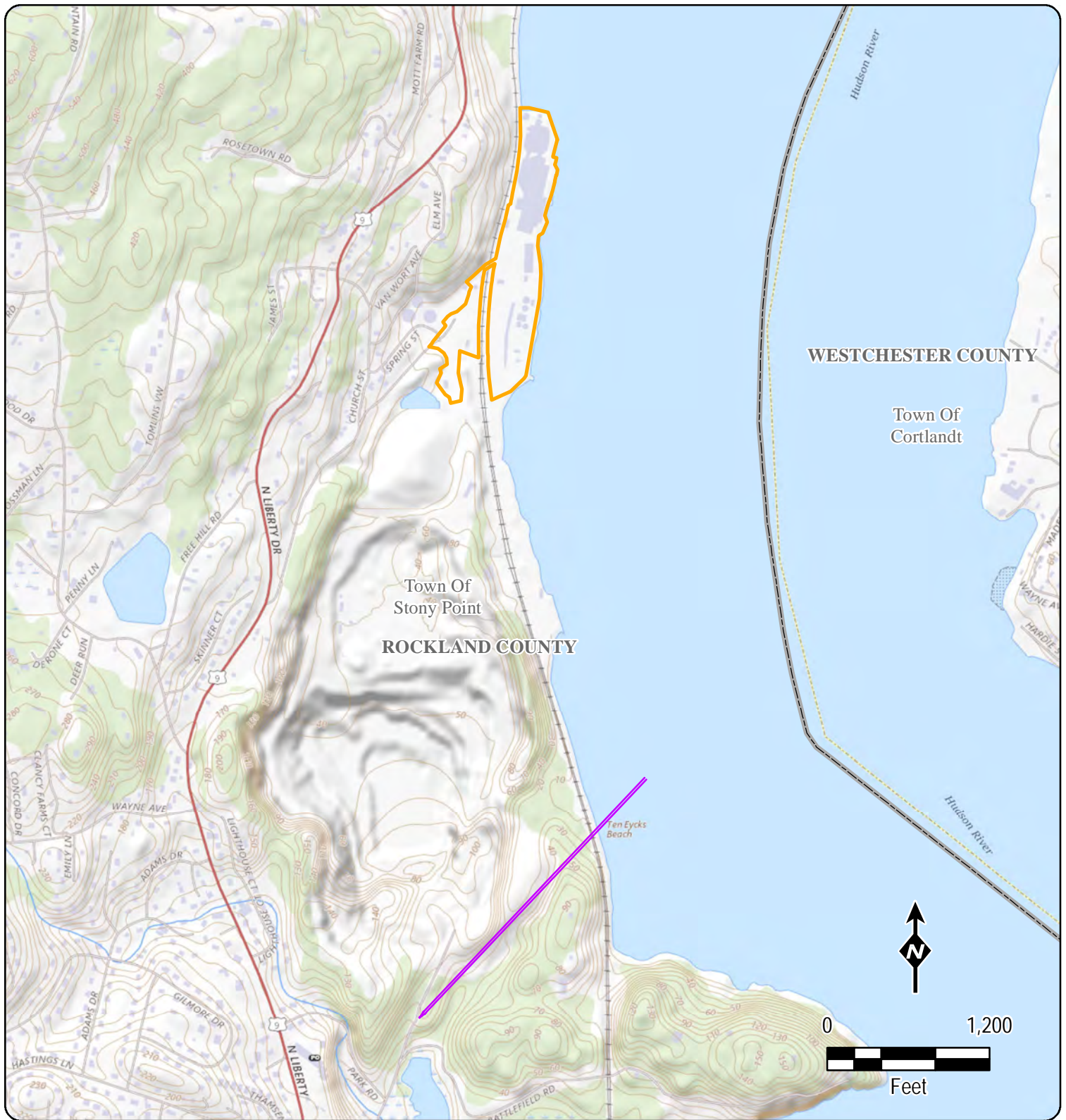
Details of the planned work locations, including an overview map of the proposed route, is available on the Project website at: <https://chpexpress.com/overview-of-public-documents/environmental-management-construction-plan/>. In general, construction activities for this Segment are anticipated to commence in the winter of 2023. Where possible, construction will generally occur during daylight hours, though some HDD activities which require continuous operations would extend to later hours.

The EM&CP provides detailed information regarding how the Stony Point Transitional HDD will be constructed. The document describes and depicts the specific location of the Stony Point Transitional HDD, Construction Zone, and temporary work areas, as well as descriptions of work to be performed, plan and profile drawings depicting the Project, and protocols to be used during construction to protect the community and the environment, and to comply with the CHPE Certificate. The EM&CP must be reviewed and approved by the PSC before construction on this Segment can begin.

The full Commission docket for the Project can be accessed via the Commission’s website at: <http://documents.dps.ny.gov/public/MatterManagement/CaseMaster.aspx?MatterCaseNo=10-T-0139> and electronic copies of EM&CP documents also will be available on the Project website at <https://chpexpress.com/overview-of-public-documents/environmental-management-construction-plan/>. Paper copies of the EM&CP submission will be available for viewing at the following local document repositories: Rose Memorial Library Association, 79 East Main St., Stony Point, NY 10980; Tomkins Cove Public Library, 419 Liberty Drive North, Tomkins Cove, NY 10986.

Comments related to the proposed Stony Point Transitional HDD EM&CP should be submitted to the Commission Secretary by email at [secretary@dps.ny.gov](mailto:secretary@dps.ny.gov) or by mail to Michelle Phillips, Secretary, NYS Public Service Commission, 3 Empire State Plaza, Albany, NY, 12223, within 30 days of the EM&CP segment's filing with the Commission. All comments should reference Case Number 10-T-0139.

CHPE has established a toll-free number for questions regarding the Project: 1-800-991-CHPE (2473). Questions or requests for further information can be directed to: [publicoutreach@chpexpress.com](mailto:publicoutreach@chpexpress.com) or by mail to Molly Hollister, WSP USA, One Pennsylvania Plaza, New York, New York 10119.



- Proposed Cable Conduits Installed by Horizontal Directional Drill (HDD)
- Temporary Laydown Yard Within this Area
- County
- City / Town



CHAMPLAIN HUDSON POWER EXPRESS  
Stony Point Transitional HDD Project

## Figure 1 Site Location

Created: 9/16/2022



## **Notice of Submission of Stony Point Transitional HDD EM&CP For the Champlain Hudson Power Express Line**

Dear Stakeholder/Record Interest Holder,

On or about September 23, 2022, CHPE LLC and its wholly-owned subsidiary, CHPE Properties, Inc. (collectively referred to as “CHPE”) intend to submit an Environmental Management & Construction Plan (“EM&CP”) for the Stony Point Transitional Horizontal Directional Drill (“HDD”) portion of the proposed Champlain Hudson Power Express (“CHPE”) Project. The Stony Point Transitional HDD consists of a transitional horizontal directional drill in the Town of Stony Point, Rockland County, which will connect an overland segment of the CHPE line (Stony Point to Haverstraw Overland Segment 12) with the Lower Hudson River Marine Segment (Segment 20), and the installation of conduits in this location. This EM&CP also includes a temporary laydown yard at Tomkins Cove, also in the Town of Stony Point.

The New York State Public Service Commission (“PSC”) issued a Certificate of Environmental Compatibility and Public Need (“Certificate”) to CHPE on April 18, 2013 to construct and operate the Project. Pursuant to that Certificate, CHPE is required to circulate notices to certain landowners, utility owners, municipalities and agencies near the proposed Stony Point Transitional HDD route location indicating that the Stony Point Transitional HDD EM&CP will be filed and providing links and contact information which stakeholders can use to obtain further information or to submit comments.

The EM&CP provides detailed information regarding how the Stony Point Transitional HDD will be constructed. The document describes and depicts the specific location of the Stony Point Transitional HDD, Construction Zone, and temporary work areas, as well as descriptions of work to be performed, plan and profile drawings depicting the Project, and protocols to be used during construction to protect the community and the environment, and to comply with the CHPE Certificate. The EM&CP must be reviewed and approved by the PSC before construction on this Segment can begin.

An overview map of the proposed route accompanies this notice. Further details of the planned work locations will be made available on the Project website at: <https://chpexpress.com/overview-of-public-documents/environmental-management-construction-plan/>. In general, construction activities for this Segment are anticipated to commence in the winter of 2023. Where possible, construction will generally occur during daylight hours, though some HDD activities which require continuous operations would extend to later hours.

### **Interest to be Acquired**

You have been identified as a stakeholder or the holder of a record interest in property being utilized by CHPE for Stony Point Transitional HDD. Record interest holders own or hold an easement, lien, mortgage, or other recorded interest in land to be used on a temporary or permanent basis by CHPE for the construction or operation of the Facility. This notice is intended to provide notice that CHPE is acquiring an interest in lands associated with the Stony Point



Transitional HDD, in accordance with CHPE's Certificate. As noted above, the Stony Point Transitional HDD and related areas are depicted on the accompanying map.

### **Contact Information and Document Repositories**

CHPE has established a toll-free number for questions regarding the Project: 1-800-991-CHPE (2473). Questions or requests for further information can be directed to [publicoutreach@chpexpress.com](mailto:publicoutreach@chpexpress.com) or by mail to Molly Hollister, WSP USA, One Pennsylvania Plaza, New York, New York 10119.

The Stony Point Transitional HDD EM&CP documents will be available on the PSC's website at <http://documents.dps.ny.gov/public/MatterManagement/CaseMaster.aspx?MatterCaseNo=10-T-0139> and on the Project website <https://chpexpress.com/overview-of-public-documents/environmental-management-construction-plan/> once they are filed.

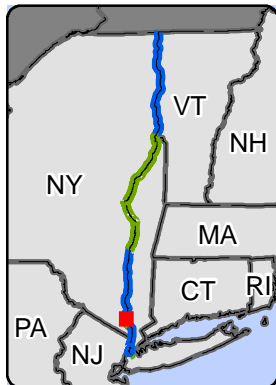
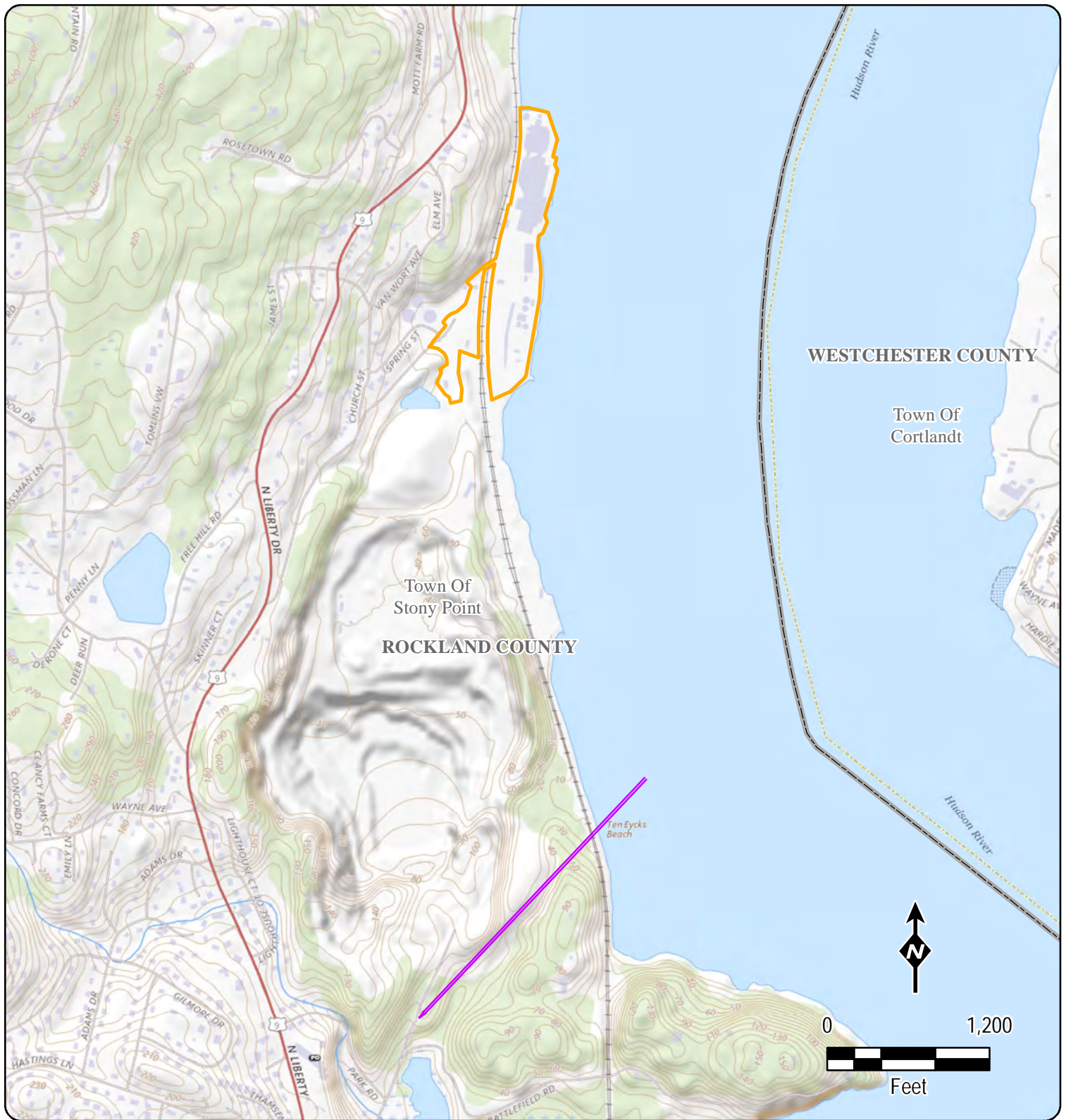
Paper copies of the EM&CP submission will be available for viewing at the following local document repositories: Rose Memorial Library Association, 79 East Main St., Stony Point, NY 10980; Tomkins Cove Public Library, 419 Liberty Drive North, Tomkins Cove, NY 10986.

### **Filing Comments**

Any person wishing to be heard by the Commission on any matter related to the proposed EM&CP may file written comments with the Commission Secretary by email at [secretary@dps.ny.gov](mailto:secretary@dps.ny.gov) or by mail to Michelle Phillips, Secretary, NYS Public Service Commission, 3 Empire State Plaza, Albany, NY, 12223, within 30 days of the EM&CP segment's filing with the Commission. All comments should reference Case Number 10-T-0139.

Yours truly,

Josh Bagnato  
Vice President, Development



- Proposed Cable Conduits Installed by Horizontal Directional Drill (HDD)
- Temporary Laydown Yard Within this Area
- County
- City / Town



CHAMPLAIN HUDSON POWER EXPRESS  
Stony Point Transitional HDD Project

### Figure 1 Site Location

Created: 9/16/2022