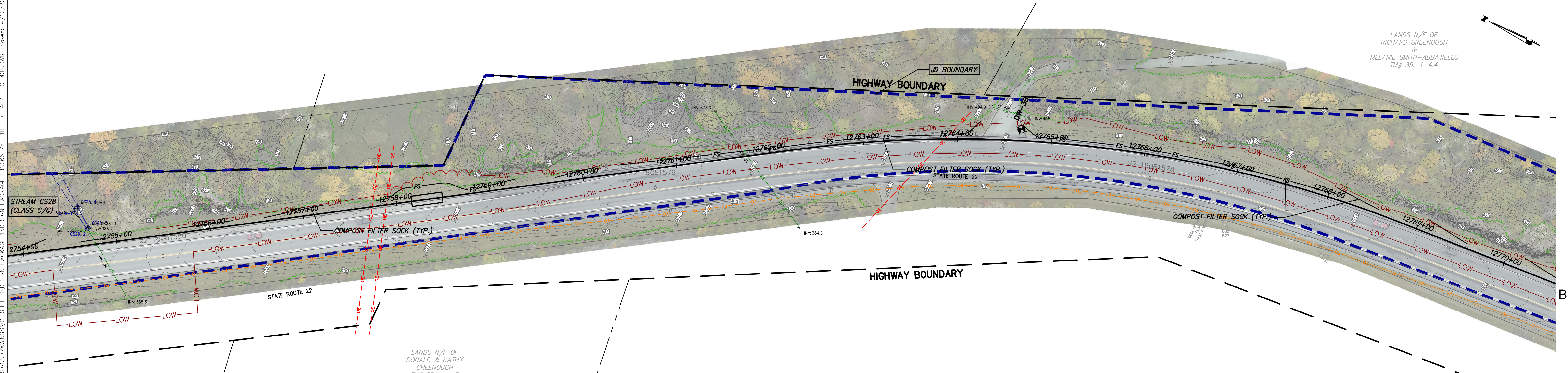





STA. 12740+00 TO STA. 12755+00 PLAN VIEW
SCALE: 1" = 50'



STA. 12755+00 TO STA. 12770+00 PLAN VIEW
SCALE: 1" = 50'



III Winners Circle, PO Box 5269
Albany, NY 12205-0269
518.453.4500 • www.chacompanies.com

IT IS A VIOLATION OF LAW FOR ANY PERSON, UNLESS THEY ARE ACTING UNDER THE DIRECTION OF A LICENSED PROFESSIONAL ENGINEER, ARCHITECT, LANDSCAPE ARCHITECT OR LAND SURVEYOR TO ALTER AN ITEM IN ANY WAY. IF AN ITEM BEARING THE STAMP OF A LICENSED PROFESSIONAL IS ALTERED, THE ALTERING ENGINEER, ARCHITECT, LANDSCAPE ARCHITECT OR LAND SURVEYOR SHALL STAMP THE DOCUMENT AND INCLUDE THE NOTATION "ALTERED BY" FOLLOWED BY THEIR SIGNATURE, THE DATE OF SUCH ALTERATION, AND A SPECIFIC DESCRIPTION OF THE ALTERATION.

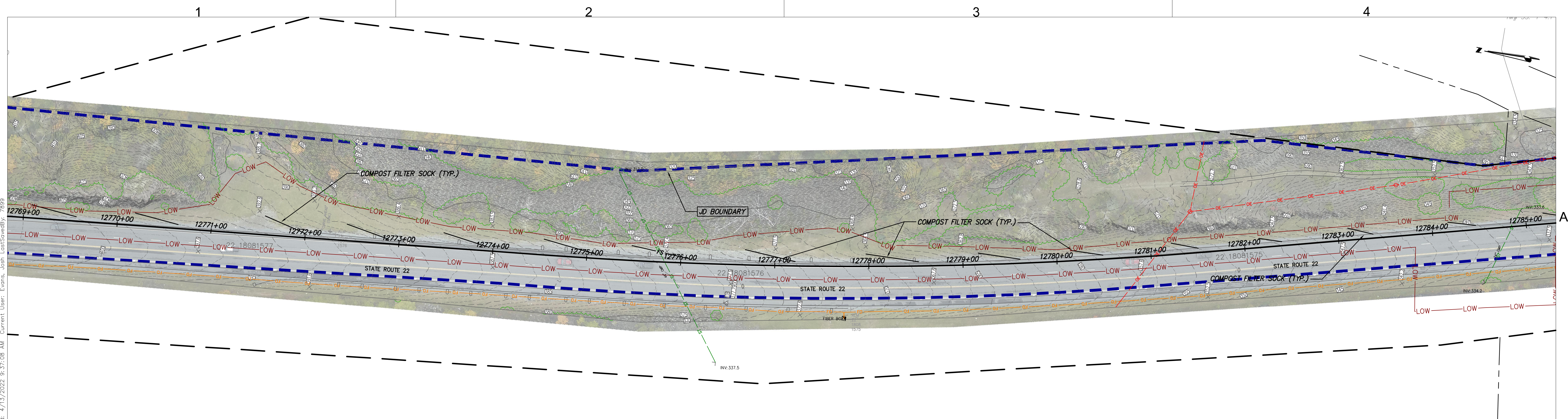
No.	DATE	SUBMITTAL / REVISION DESCRIPTION	DB	APP
A	04/15/2022	EM&CP REGULATORY SUBMISSION	JM	JR

CHAMPLAIN HUDSON POWER EXPRESS
SEGMENT 2 - ROUTE 22: DRESDEN - WHITEHALL
STA. 12740+00 TO STA. 12770+00 EROSION AND
SEDIMENT CONTROL PLAN

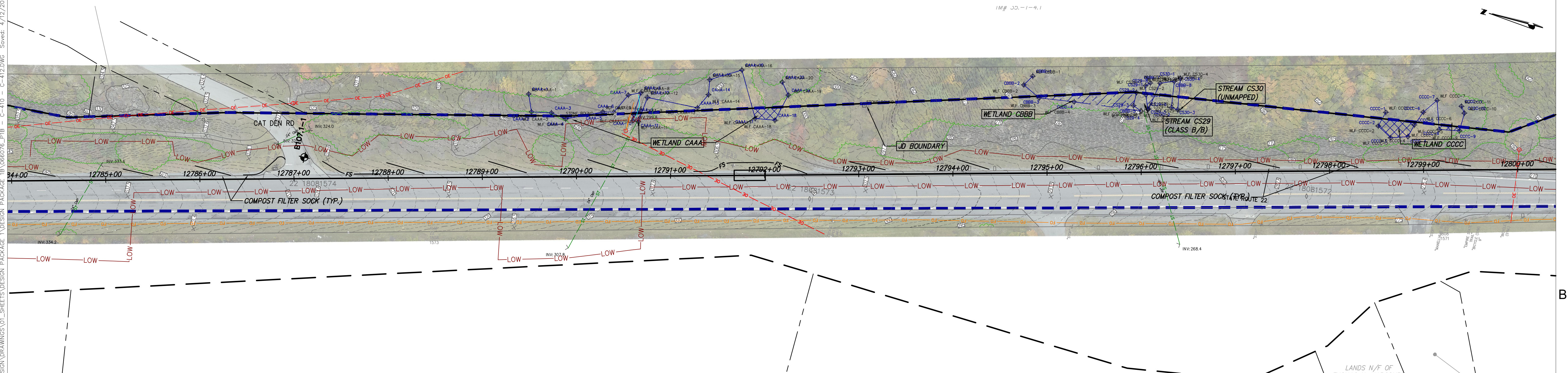
DRAWN BY: xxxDESIGNED BY: xxxAPPROVED BY: xxxSCALE AS NOTEDREV. NO. X

KIEWIT PROJECT NO.
21162
CHA PROJECT NO.
066076
DRAWING NO.
C-409




DATE
04/15/2022
SH.NO.
XXX OF XXX



STA. 12770+00 TO STA. 12785+00 PLAN VIEW
SCALE: 1" = 50'



STA. 12785+00 TO STA. 12800+00 PLAN VIEW
SCALE: 1" = 50'



III Winners Circle, PO Box 5269
Albany, NY 12205-0269
518.453.4500 | www.chacompanies.com

IT IS A VIOLATION OF LAW FOR ANY PERSON, UNLESS THEY ARE ACTING UNDER THE DIRECTION OF A LICENSED PROFESSIONAL ENGINEER, ARCHITECT, LANDSCAPE ARCHITECT OR LAND SURVEYOR TO ALTER AN ITEM IN ANY WAY IF AN ITEM BEARING THE STAMP OF A LICENSED PROFESSIONAL IS ALTERED, THE ALTERING ENGINEER, ARCHITECT, LANDSCAPE ARCHITECT OR LAND SURVEYOR SHALL STAMP THE DOCUMENT AND INCLUDE THE NOTATION "ALTERED BY" FOLLOWED BY THEIR SIGNATURE, THE DATE OF SUCH ALTERATION, AND A SPECIFIC DESCRIPTION OF THE ALTERATION.

No.	DATE	SUBMITTAL / REVISION DESCRIPTION	DB	APP
A	04/15/2022	EM&CP REGULATORY SUBMISSION	JM	JR

CHAMPLAIN HUDSON POWER EXPRESS
SEGMENT 2 - ROUTE 22: DRESDEN - WHITEHALL
STA. 12770+00 TO STA. 12800+00 EROSION AND SEDIMENT CONTROL PLAN

DRAWN BY: xxx

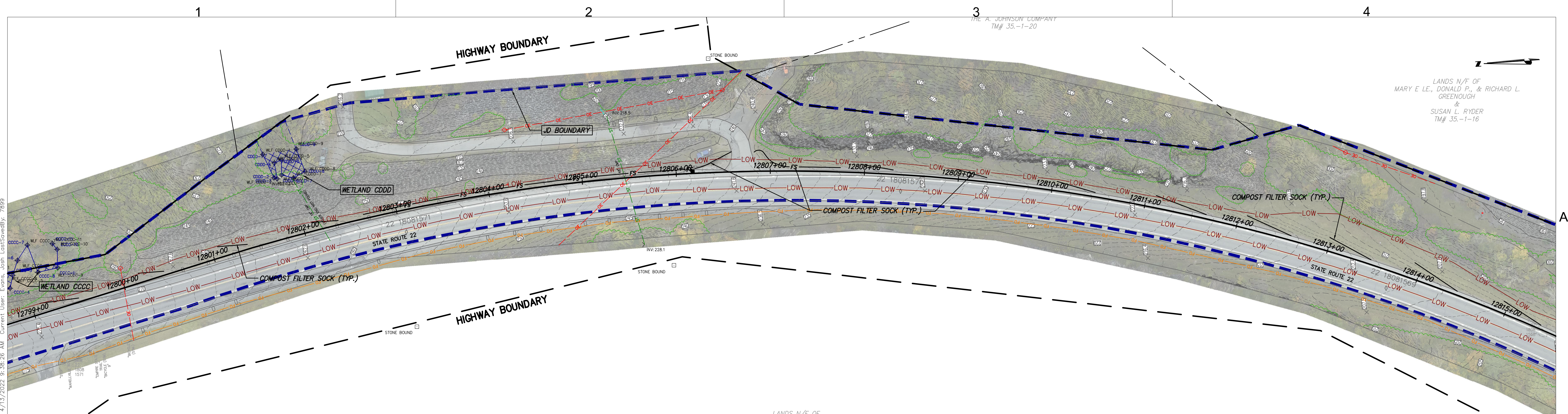
DESIGNED BY: xxx

APPROVED BY: xxx

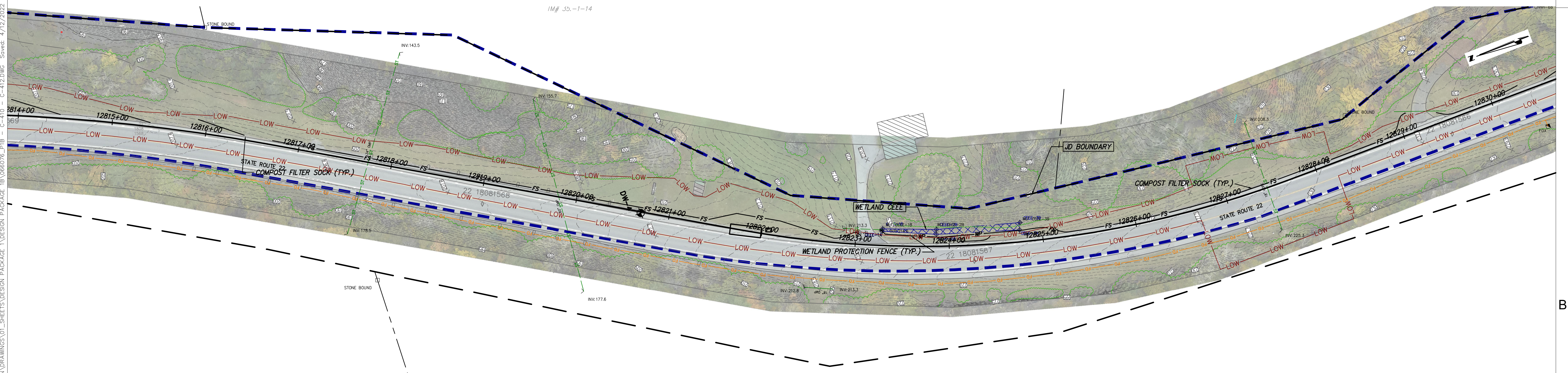
SCALE AS NOTED
REV. NO.

KIEWIT PROJECT NO.
21162
CHA PROJECT NO.
066076
DRAWING NO.
C-410




DATE
04/15/2022
X SH.NO.
XXX OF XXX



STA. 12800+00 TO STA. 12815+00 PLAN VIEW
SCALE: 1" = 50'



STA. 12815+00 TO STA. 12830+00 PLAN VIEW
SCALE: 1" = 50'



III Winners Circle, PO Box 5269
Albany, NY 12205-0269
518.453.4500 • www.chacompanies.com

IT IS A VIOLATION OF LAW FOR ANY PERSON, UNLESS THEY ARE ACTING UNDER THE DIRECTION OF A LICENSED PROFESSIONAL ENGINEER, ARCHITECT, LANDSCAPE ARCHITECT OR LAND SURVEYOR TO ALTER AN ITEM IN ANY WAY. IF AN ITEM BEARING THE STAMP OF A LICENSED PROFESSIONAL IS ALTERED, THE ALTERING ENGINEER, ARCHITECT, LANDSCAPE ARCHITECT OR LAND SURVEYOR SHALL STAMP THE DOCUMENT AND INCLUDE THE NOTATION "ALTERED BY" FOLLOWED BY THEIR SIGNATURE, THE DATE OF SUCH ALTERATION, AND A SPECIFIC DESCRIPTION OF THE ALTERATION.

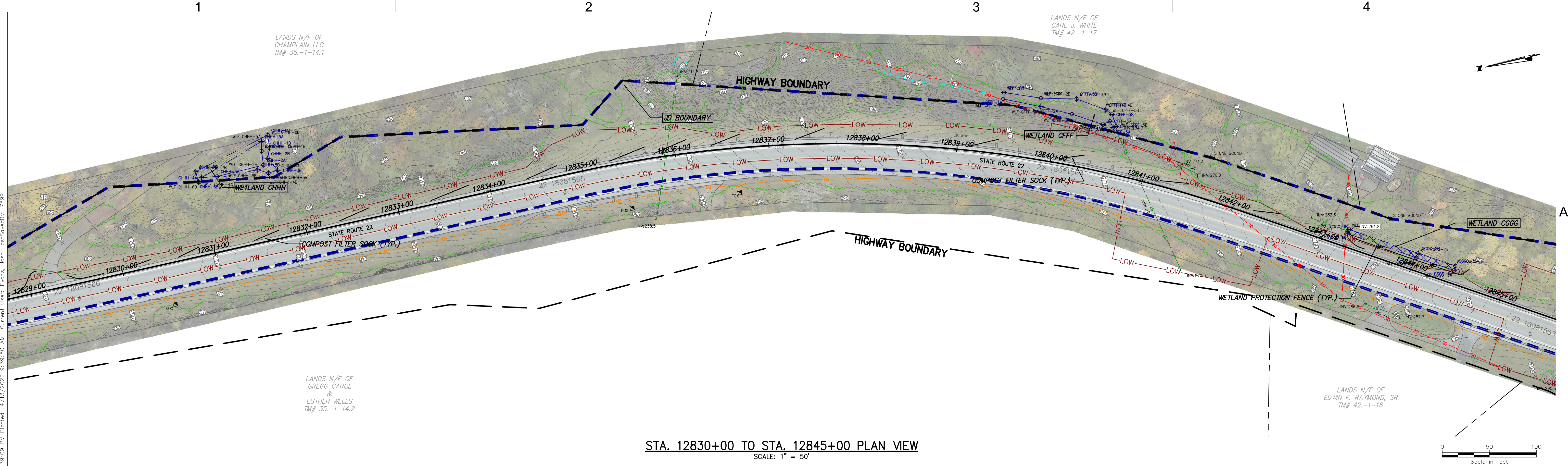
No.	DATE	SUBMITTAL / REVISION DESCRIPTION	DB	APP
A	04/15/2022	EM&CP REGULATORY SUBMISSION	JM	JR

CHAMPLAIN HUDSON POWER EXPRESS
SEGMENT 2 - ROUTE 22: DRESDEN - WHITEHALL
STA. 12800+00 TO STA. 12830+00 EROSION AND
SEDIMENT CONTROL PLAN

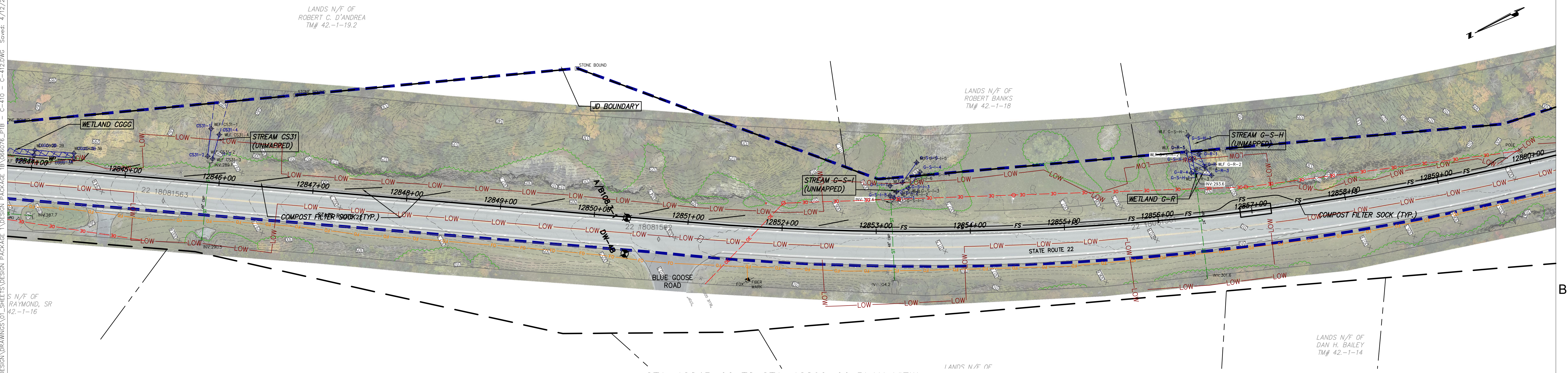
DRAWN BY: xxx DESIGNED BY: xxx APPROVED BY: xxx SCALE: AS NOTED
REV. NO. X SH.NO.

KIEWIT PROJECT NO. 21162
CHA PROJECT NO. 066076
DRAWING NO. **C-411**




DATE 04/15/2022
XXX OF XXX



STA. 12830+00 TO STA. 12845+00 PLAN VIEW
SCALE: 1" = 50'



STA. 12845+00 TO STA. 12860+00 PLAN VIEW
SCALE: 1" = 50'



III Winners Circle, PO Box 5269
Albany, NY 12205-0269
518.453.4500 • www.chacompanies.com

IT IS A VIOLATION OF LAW FOR ANY PERSON, UNLESS THEY ARE ACTING UNDER THE DIRECTION OF A LICENSED PROFESSIONAL ENGINEER, ARCHITECT, LANDSCAPE ARCHITECT OR LAND SURVEYOR TO ALTER AN ITEM IN ANY WAY. IF AN ITEM BEARING THE STAMP OF A LICENSED PROFESSIONAL IS ALTERED, THE ALTERING ENGINEER, ARCHITECT, LANDSCAPE ARCHITECT OR LAND SURVEYOR SHALL STAMP THE DOCUMENT AND INCLUDE THE NOTATION "ALTERED BY" FOLLOWED BY THEIR SIGNATURE, THE DATE OF SUCH ALTERATION, AND A SPECIFIC DESCRIPTION OF THE ALTERATION.

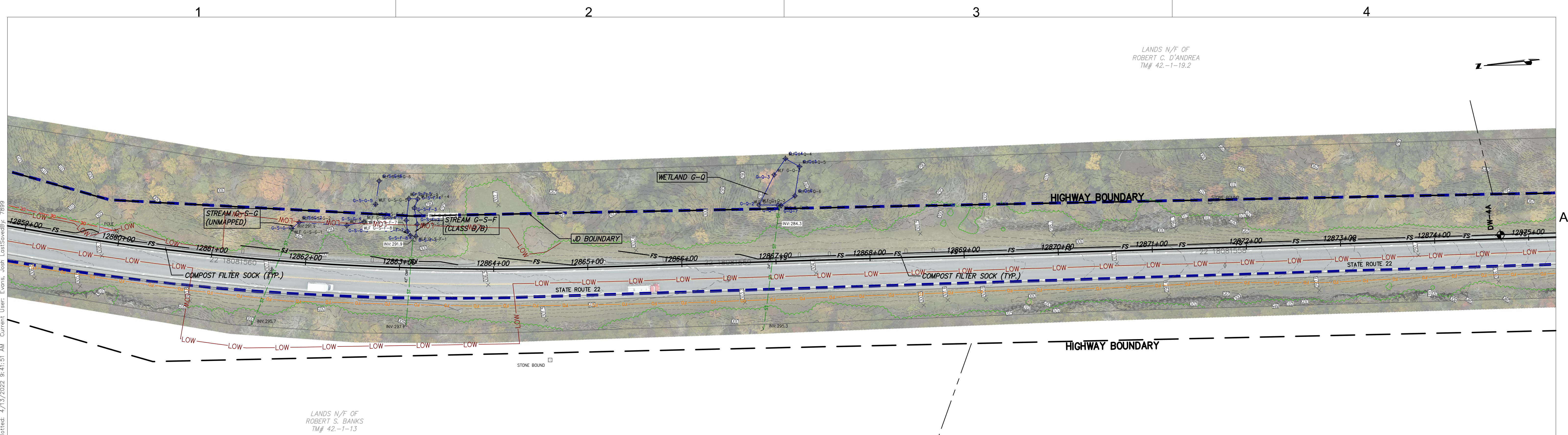
No.	DATE	SUBMITTAL / REVISION DESCRIPTION	DB	APP
A	04/15/2022	EM&CP REGULATORY SUBMISSION	JM	JR

CHAMPLAIN HUDSON POWER EXPRESS
SEGMENT 2 - ROUTE 22: DRESDEN - WHITEHALL
STA. 12830+00 TO STA. 12860+00 EROSION AND
SEDIMENT CONTROL PLAN

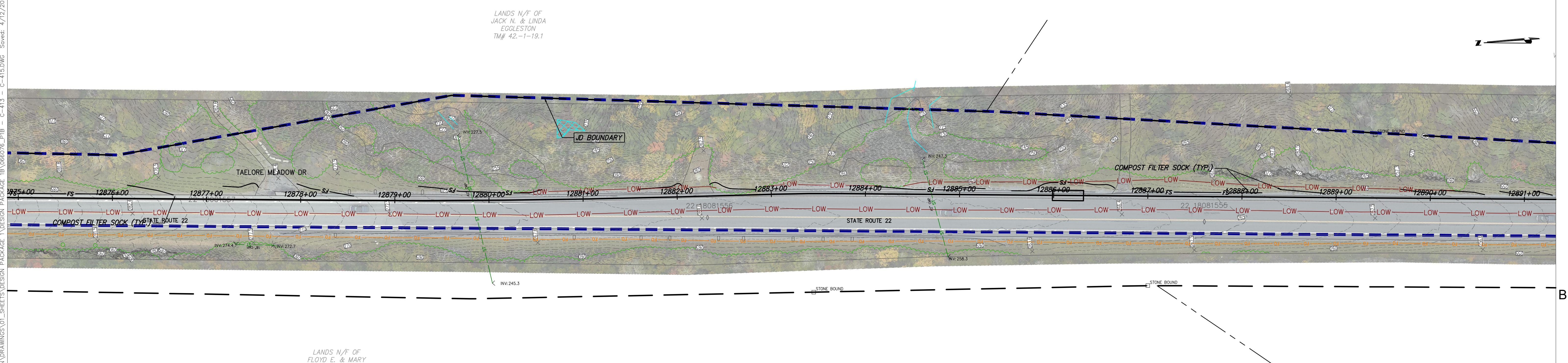
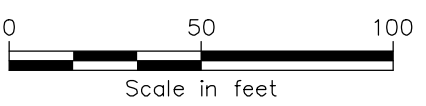
DRAWN BY: xxx DESIGNED BY: xxx APPROVED BY: xxx
SCALE AS NOTED
REV. NO. X

KIEWIT PROJECT NO. 21162
CHA PROJECT NO. 066076
DRAWING NO. **C-412**

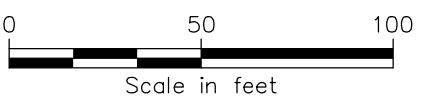
DATE 04/15/2022
SH.NO. XXX OF XXX






P1B STA. 12860+00 TO STA. 12875+00 PLAN VIEW
SCALE: 1" = 50'



STA. 12875+00 TO STA. 12890+00 PLAN VIEW
SCALE: 1" = 50'





III Winners Circle, PO Box 5269
Albany, NY 12205-0269
518.453.4500 • www.chacompanies.com

IT IS A VIOLATION OF LAW FOR ANY PERSON, UNLESS THEY ARE ACTING UNDER THE DIRECTION OF A LICENSED PROFESSIONAL ENGINEER, ARCHITECT, LANDSCAPE ARCHITECT OR LAND SURVEYOR TO ALTER AN ITEM IN ANY WAY. IF AN ITEM BEARING THE STAMP OF A LICENSED PROFESSIONAL IS ALTERED, THE ALTERING ENGINEER, ARCHITECT, LANDSCAPE ARCHITECT OR LAND SURVEYOR SHALL STAMP THE DOCUMENT AND INCLUDE THE NOTATION "ALTERED BY" FOLLOWED BY THEIR SIGNATURE, THE DATE OF SUCH ALTERATION, AND A SPECIFIC DESCRIPTION OF THE ALTERATION.

No.	DATE	SUBMITTAL / REVISION DESCRIPTION	DB	APP
A	04/15/2022	EM&CP REGULATORY SUBMISSION	JM	JR

CHAMPLAIN HUDSON POWER EXPRESS
SEGMENT 2 - ROUTE 22: DRESDEN - WHITEHALL
STA. 12860+00 TO STA. 12890+00 EROSION AND SEDIMENT CONTROL PLAN

C-413

DRAWN BY: xxx

DESIGNED BY: xxx

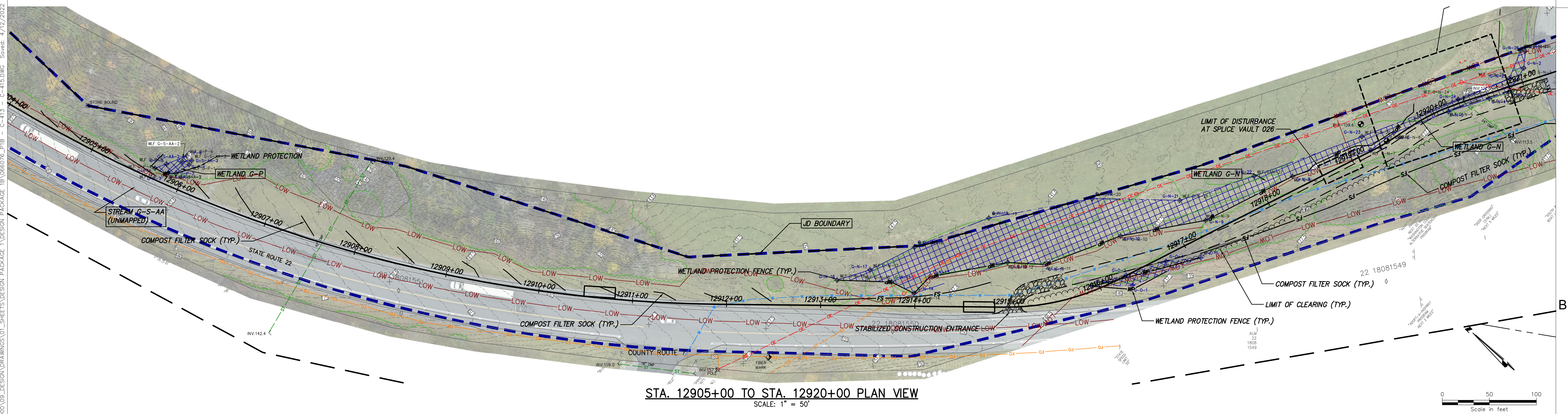
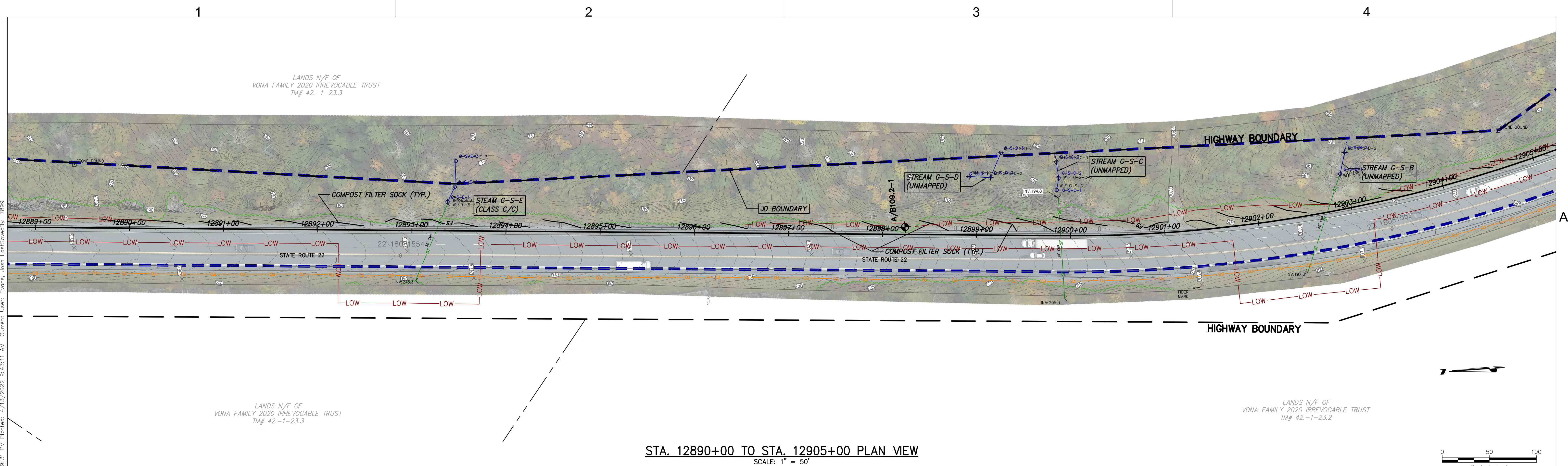
APPROVED BY: xxx




SCALE: AS NOTED

REV. NO.:

DATE: 04/15/2022

SH. NO. XXX OF XXX





III Winners Circle, PO Box 5269
Albany, NY 12205-0269
518.453.4500 • www.chacompanies.com

IT IS A VIOLATION OF LAW FOR ANY PERSON, UNLESS THEY ARE ACTING UNDER THE DIRECTION OF A LICENSED PROFESSIONAL ENGINEER, ARCHITECT, LANDSCAPE ARCHITECT OR LAND SURVEYOR TO ALTER AN ITEM IN ANY WAY IF AN ITEM BEARING THE STAMP OF A LICENSED PROFESSIONAL IS ALTERED, THE ALTERING ENGINEER, ARCHITECT, LANDSCAPE ARCHITECT OR LAND SURVEYOR SHALL STAMP THE DOCUMENT AND INCLUDE THE NOTATION "ALTERED BY" FOLLOWED BY THEIR SIGNATURE, THE DATE OF SUCH ALTERATION, AND A SPECIFIC DESCRIPTION OF THE ALTERATION.

No.	DATE	SUBMITTAL / REVISION DESCRIPTION	DB	APP
A	04/15/2022	EM&CP REGULATORY SUBMISSION	JM	JR

CHAMPLAIN HUDSON POWER EXPRESS
SEGMENT 2 - ROUTE 22: DRESDEN - WHITEHALL
STA. 12890+00 TO STA. 12920+00 EROSION AND SEDIMENT CONTROL PLAN

DRAWN BY: xxx	DESIGNED BY: xxx	APPROVED BY: xxx	SCALE: AS NOTED
REV. NO.			

KIEWIT PROJECT NO.	21162
CHA PROJECT NO.	086076
DRAWING NO.	C-414
DATE	04/15/2022
SH.NO.	XXX OF XXX