

III Winners Circle, PO Box 5269
Albany, NY 12205-0269
518.453.4500 • www.chacompanies.com

IT IS A VIOLATION OF LAW FOR ANY PERSON, UNLESS THEY ARE ACTING UNDER THE DIRECTION OF A LICENSED PROFESSIONAL ENGINEER, ARCHITECT, LANDSCAPE ARCHITECT OR LAND SURVEYOR TO ALTER AN ITEM IN ANY WAY IF AN ITEM BEARING THE STAMP OF A LICENSED PROFESSIONAL IS ALTERED, THE ALTERING ENGINEER, ARCHITECT, LANDSCAPE ARCHITECT OR LAND SURVEYOR SHALL STAMP THE DOCUMENT AND INCLUDE THE NOTATION "ALTERED BY" FOLLOWED BY THEIR SIGNATURE, THE DATE OF SUCH ALTERATION, AND A SPECIFIC DESCRIPTION OF THE ALTERATION.

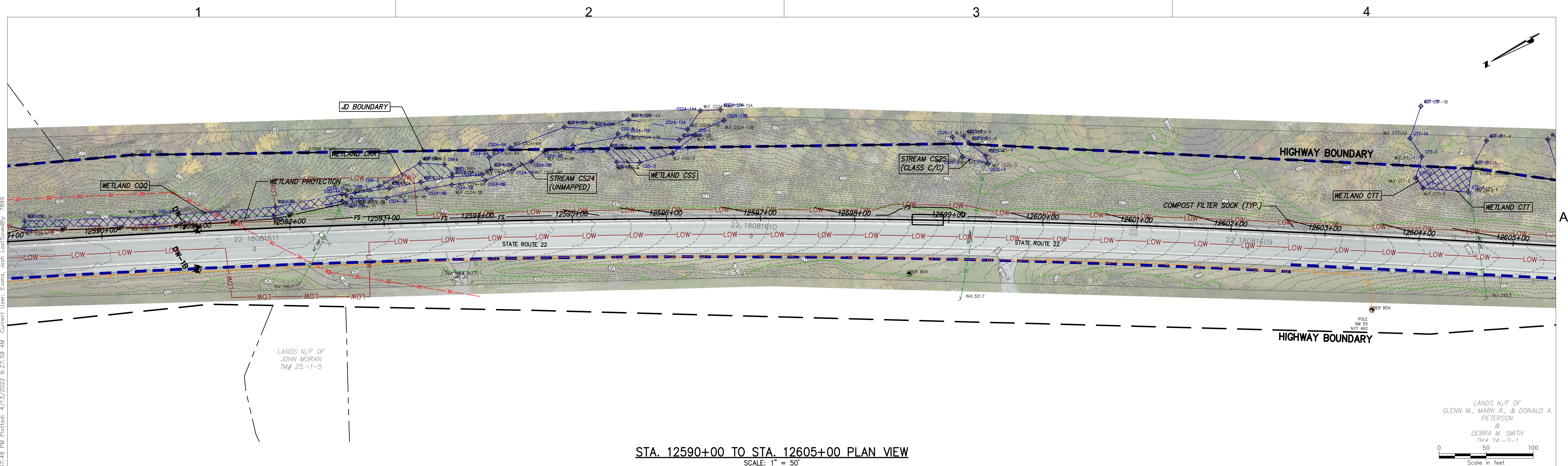
No.	DATE	SUBMITTAL / REVISION DESCRIPTION	DB	APP
A	04/15/2022	EM&CP REGULATORY SUBMISSION	JM	JR

CHAMPLAIN HUDSON POWER EXPRESS
SEGMENT 2 - ROUTE 22: DRESDEN - WHITEHALL
STA. 12560+00 TO STA. 12590+00 EROSION AND
SEDIMENT CONTROL PLAN

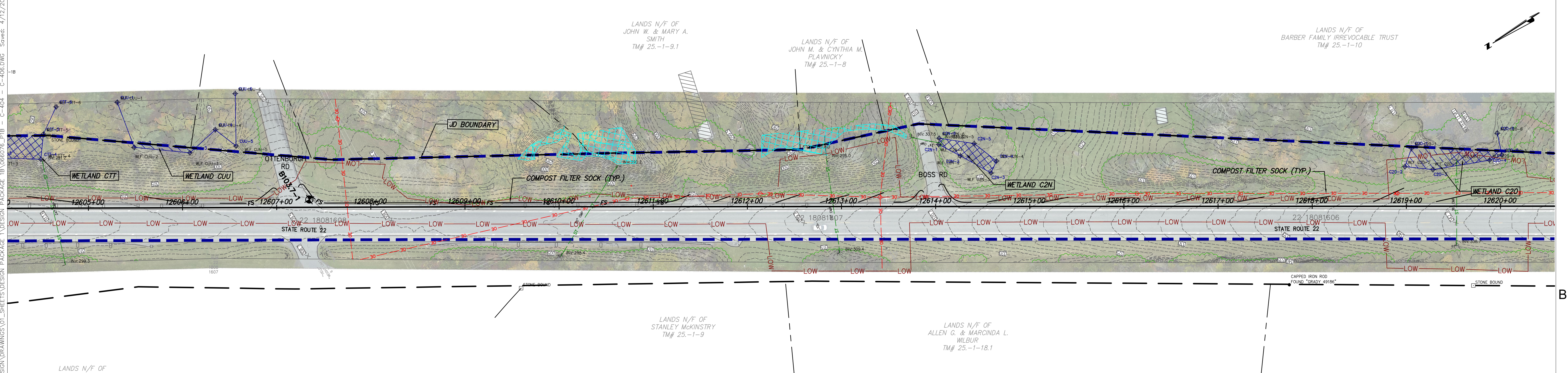
DRAWN BY: xxx DESIGNED BY: xxx APPROVED BY: xxx SCALE AS NOTED
REV. NO. X SH.NO.

KIEWIT PROJECT NO. 21162
CHA PROJECT NO. 066076
DRAWING NO. C-403




DATE 04/15/2022
XXX OF XXX



STA. 12590+00 TO STA. 12605+00 PLAN VIEW
SCALE: 1" = 50'



STA. 12605+00 TO STA. 12620+00 PLAN VIEW
SCALE: 1" = 50'



III Winners Circle, PO Box 5269
Albany, NY 12205-0269
518.453.4500 • www.chacompanies.com

IT IS A VIOLATION OF LAW FOR ANY PERSON, UNLESS THEY ARE ACTING UNDER THE DIRECTION OF A LICENSED PROFESSIONAL ENGINEER, ARCHITECT, LANDSCAPE ARCHITECT OR LAND SURVEYOR TO ALTER AN ITEM IN ANY WAY. IF AN ITEM BEARING THE STAMP OF A LICENSED PROFESSIONAL IS ALTERED, THE ALTERING ENGINEER, ARCHITECT, LANDSCAPE ARCHITECT OR LAND SURVEYOR SHALL STAMP THE DOCUMENT AND INCLUDE THE NOTATION "ALTERED BY" FOLLOWED BY THEIR SIGNATURE, THE DATE OF SUCH ALTERATION, AND A SPECIFIC DESCRIPTION OF THE ALTERATION.

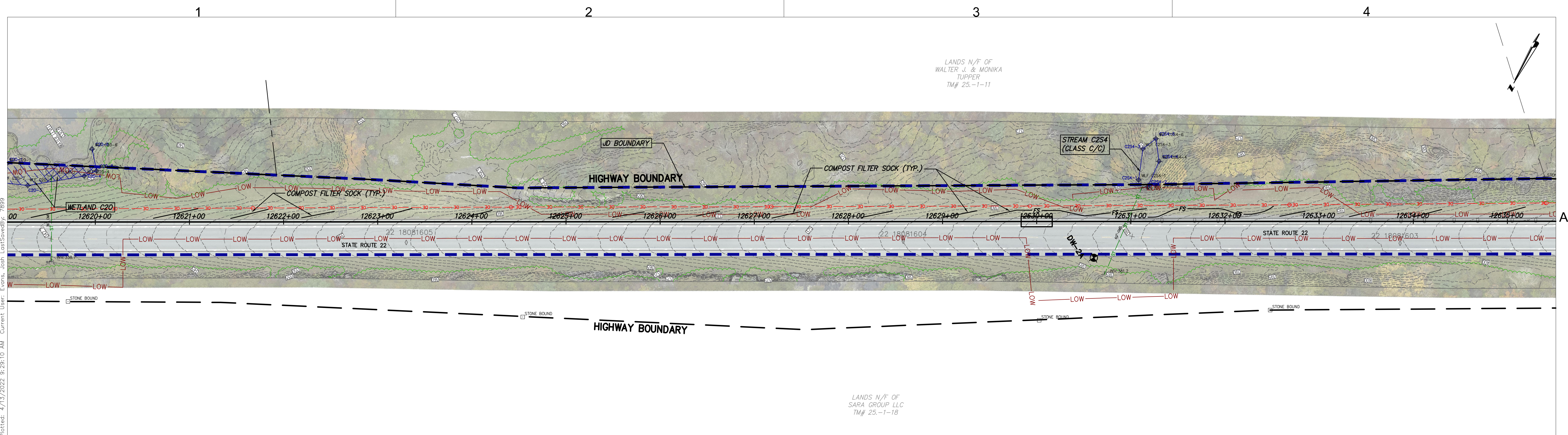
No.	DATE	SUBMITTAL / REVISION DESCRIPTION	DB	APP
A	04/15/2022	EM&CP REGULATORY SUBMISSION	JM	JR

CHAMPLAIN HUDSON POWER EXPRESS
SEGMENT 2 - ROUTE 22: DRESDEN - WHITEHALL
STA. 12590+00 TO STA. 12620+00 EROSION AND
SEDIMENT CONTROL PLAN

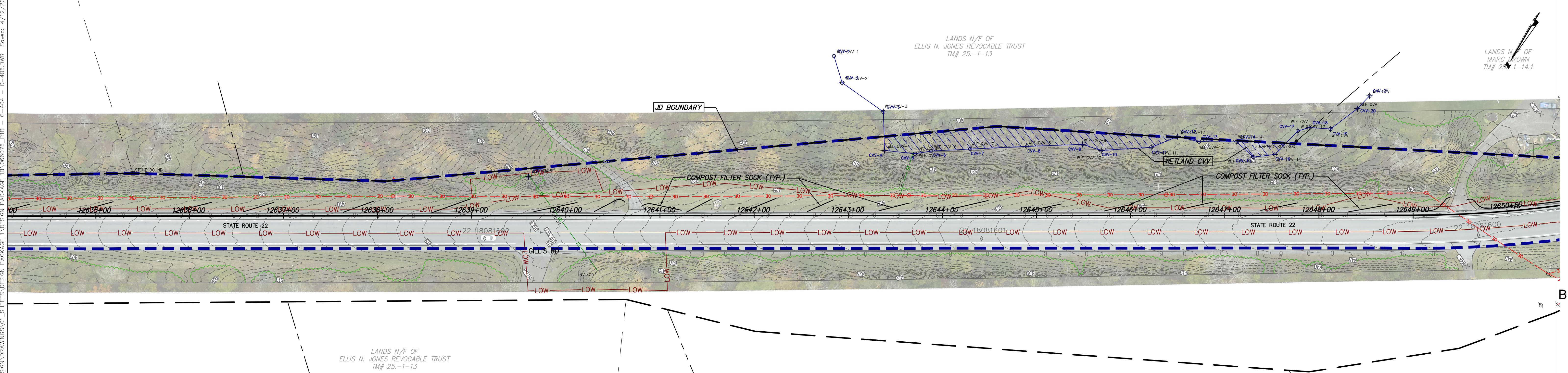
DRAWN BY: xxx DESIGNED BY: xxx APPROVED BY: xxx
SCALE: AS NOTED
REV. NO. X

KIEWIT PROJECT NO. 21162
CHA PROJECT NO. 068076
DRAWING NO. **C-404**


DATE 04/15/2022
SH.NO. XXX OF XXX




STA. 12620+00 TO STA. 12635+00 PLAN VIEW
SCALE: 1" = 50'




STA. 12635+00 TO STA. 12650+00 PLAN VIEW
SCALE: 1" = 50'



CHPE
Champlain Hudson
Power Express



Kiewit



CHA
111 Winners Circle, PO Box 5269
Albany, NY 12205-0269
518.453.4500 • www.chacompanies.com

IT IS A VIOLATION OF LAW FOR ANY PERSON, UNLESS THEY ARE ACTING UNDER THE DIRECTION OF A LICENSED PROFESSIONAL ENGINEER, ARCHITECT, LANDSCAPE ARCHITECT OR LAND SURVEYOR TO ALTER AN ITEM IN ANY WAY. IF AN ITEM BEARING THE STAMP OF A LICENSED PROFESSIONAL IS ALTERED, THE ALTERING ENGINEER, ARCHITECT, LANDSCAPE ARCHITECT OR LAND SURVEYOR SHALL STAMP THE DOCUMENT AND INCLUDE THE NOTATION "ALTERED BY" FOLLOWED BY THEIR SIGNATURE, THE DATE OF SUCH ALTERATION, AND A SPECIFIC DESCRIPTION OF THE ALTERATION.

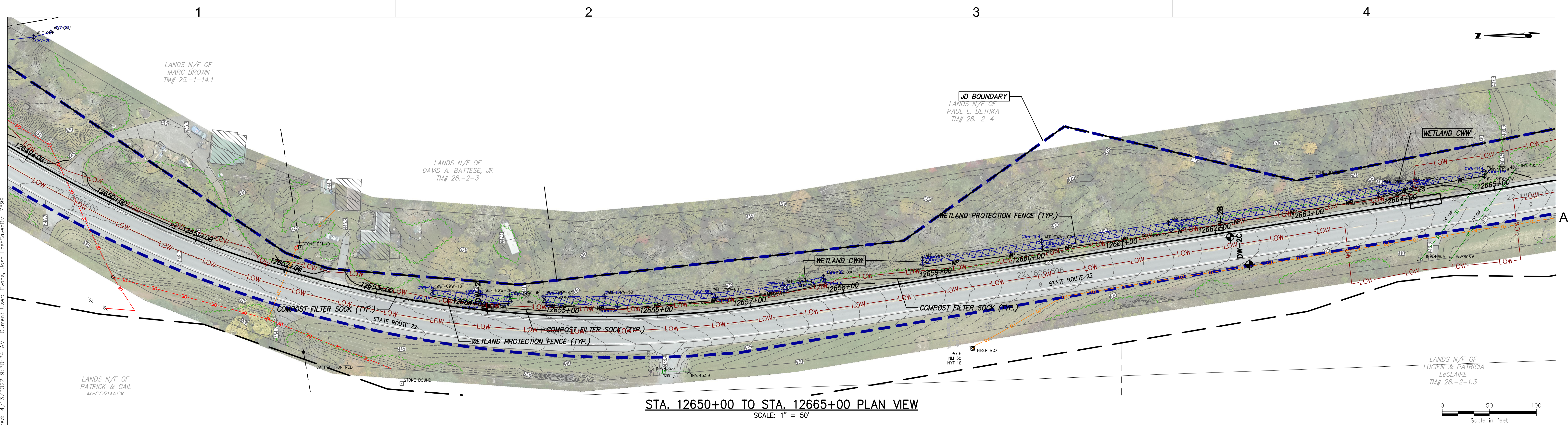
No.	DATE	SUBMITTAL / REVISION DESCRIPTION	DB	APP
A	04/15/2022	EM&CP REGULATORY SUBMISSION	JM	JR

**CHAMPLAIN HUDSON POWER EXPRESS
SEGMENT 2 - ROUTE 22: DRESDEN - WHITEHALL
STA. 12620+00 TO STA. 12650+00 EROSION AND
SEDIMENT CONTROL PLAN**

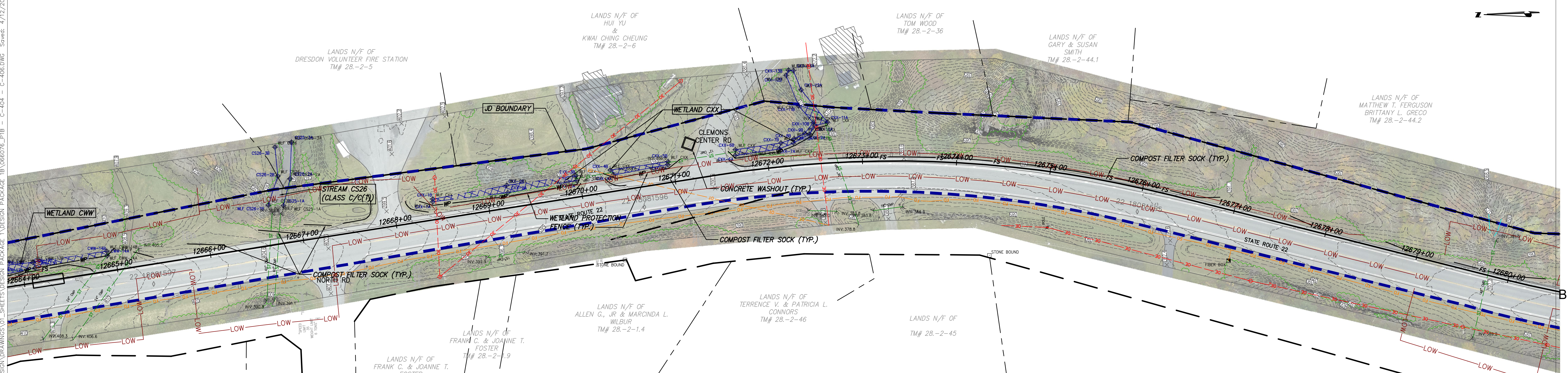
DRAWN BY: xxx DESIGNED BY: xxx APPROVED BY: xxx SCALE AS NOTED
REV. NO. X SH.NO.

KIEWIT PROJECT NO.
21162
CHA PROJECT NO.
066076
DRAWING NO.
C-405




DATE 04/15/2022
XXX OF XXX



STA. 12650+00 TO STA. 12665+00 PLAN VIEW
SCALE: 1" = 50'



STA. 12665+00 TO STA. 12680+00 PLAN VIEW
SCALE: 1" = 50'



III Winners Circle, PO Box 5269
Albany, NY 12205-0269
518.453.4500 • www.chacompanies.com

IT IS A VIOLATION OF LAW FOR ANY PERSON, UNLESS THEY ARE ACTING UNDER THE DIRECTION OF A LICENSED PROFESSIONAL ENGINEER, ARCHITECT, LANDSCAPE ARCHITECT OR LAND SURVEYOR TO ALTER AN ITEM IN ANY WAY IF AN ITEM BEARING THE STAMP OF A LICENSED PROFESSIONAL IS ALTERED, THE ALTERING ENGINEER, ARCHITECT, LANDSCAPE ARCHITECT OR LAND SURVEYOR SHALL STAMP THE DOCUMENT AND INCLUDE THE NOTATION "ALTERED BY" FOLLOWED BY THEIR SIGNATURE, THE DATE OF SUCH ALTERATION, AND A SPECIFIC DESCRIPTION OF THE ALTERATION.

No.	DATE	SUBMITTAL / REVISION DESCRIPTION	DB	APP
A	04/15/2022	EM&CP REGULATORY SUBMISSION	JM	JR

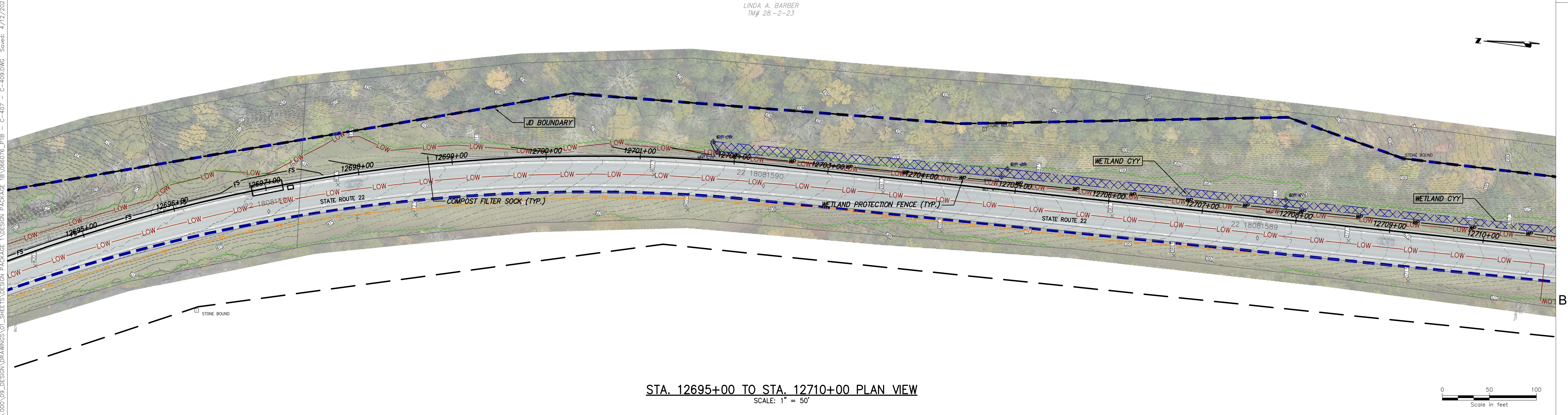
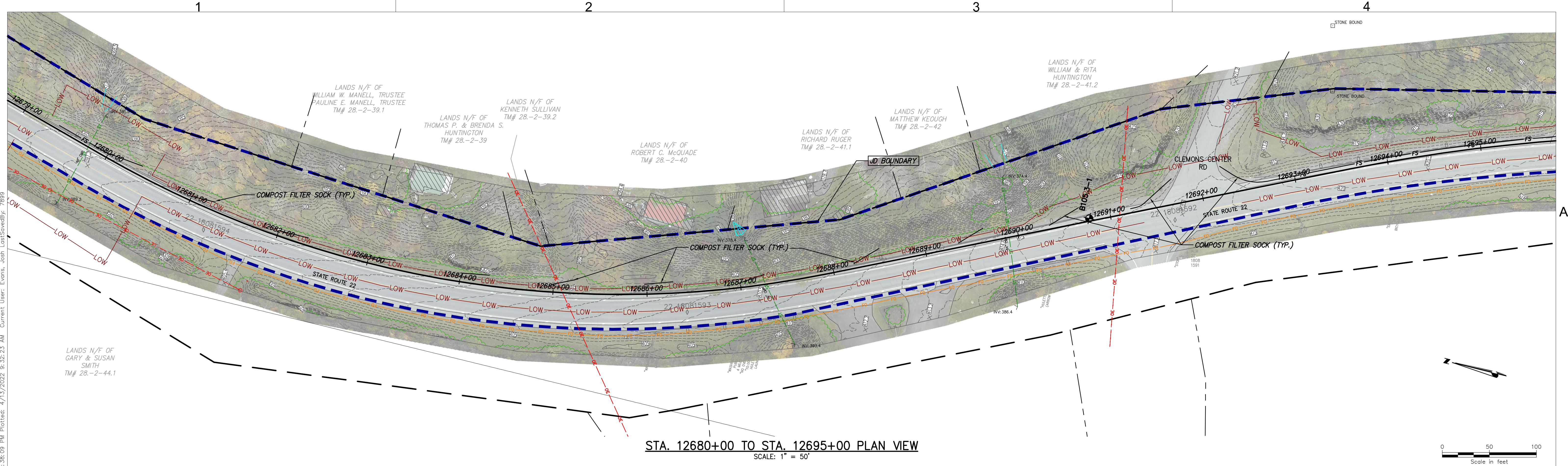
CHAMPLAIN HUDSON POWER EXPRESS
SEGMENT 2 - ROUTE 22: DRESDEN - WHITEHALL
STA. 12650+00 TO STA. 12680+00 EROSION AND
SEDIMENT CONTROL PLAN




DRAWN BY: xxx
DESIGNED BY: xxx
APPROVED BY: xxx

SCALE AS NOTED
REV. NO. X

DATE 04/15/2022
SH.NO. XXX OF XXX

KIEWIT PROJECT NO. 21162
CHA PROJECT NO. 086076
DRAWING NO. **C-406**





III Winners Circle, PO Box 5269
Albany, NY 12205-0269
518.453.4500 • www.chacompanies.com

IT IS A VIOLATION OF LAW FOR ANY PERSON, UNLESS THEY ARE ACTING UNDER THE DIRECTION OF A LICENSED PROFESSIONAL ENGINEER, ARCHITECT, LANDSCAPE ARCHITECT OR LAND SURVEYOR TO ALTER AN ITEM IN ANY WAY. IF AN ITEM BEARING THE STAMP OF A LICENSED PROFESSIONAL IS ALTERED, THE ALTERING ENGINEER, ARCHITECT, LANDSCAPE ARCHITECT OR LAND SURVEYOR SHALL STAMP THE DOCUMENT AND INCLUDE THE NOTATION "ALTERED BY" FOLLOWED BY THEIR SIGNATURE, THE DATE OF SUCH ALTERATION, AND A SPECIFIC DESCRIPTION OF THE ALTERATION.

A	04/15/2022	EM&CP REGULATORY SUBMISSION	JM	JR
No.	DATE	SUBMITTAL / REVISION DESCRIPTION	DB	APP

CHAMPLAIN HUDSON POWER EXPRESS SEGMENT 2 - ROUTE 22: DRESDEN - WHITEHALL STA. 12680+00 TO STA. 12710+00 EROSION AND SEDIMENT CONTROL PLAN

DRAWN BY: xxx

DESIGNED BY: xxx

APPROVED BY: xxx

SCALE: AS NOTED

REV. NO.:

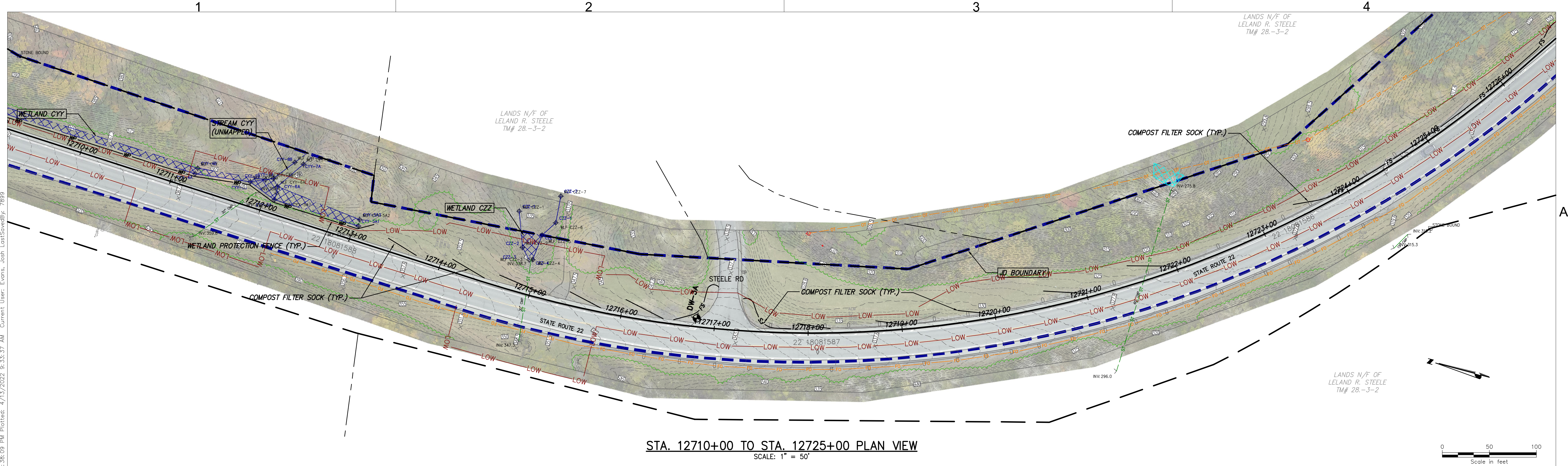
KIEWIT PROJECT NO.
21162

CHA PROJECT NO.
068076

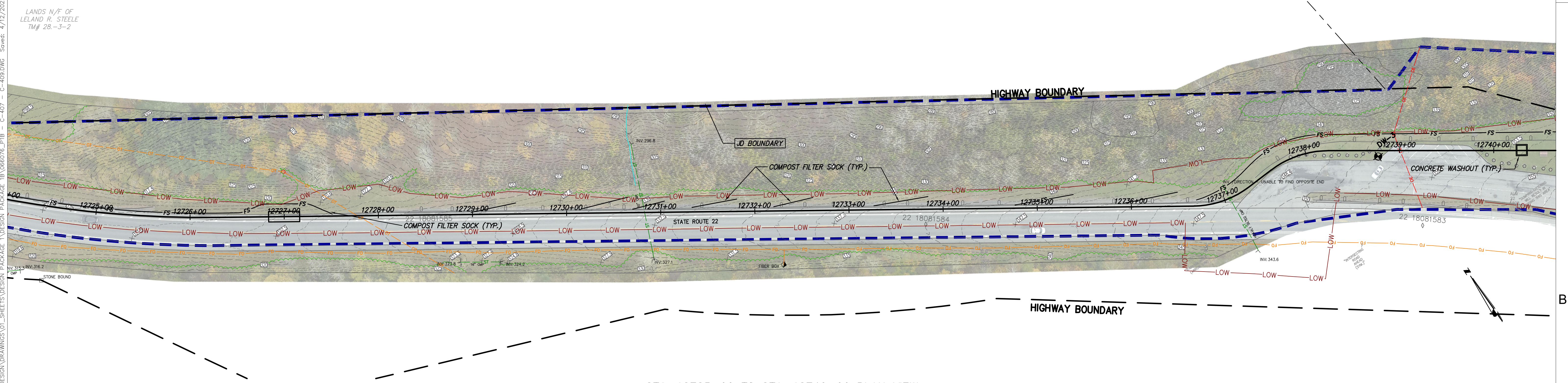
DRAWING NO.
C-407

DATE
04/15/2022




SH.NO.
XXX OF XXX



STA. 12710+00 TO STA. 12725+00 PLAN VIEW
SCALE: 1" = 50'



STA. 12725+00 TO STA. 12740+00 PLAN VIEW
SCALE: 1" = 50'



III Winners Circle, PO Box 5269
Albany, NY 12205-0269
518.453.4500 • www.chacompanies.com

IT IS A VIOLATION OF LAW FOR ANY PERSON, UNLESS THEY ARE ACTING UNDER THE DIRECTION OF A LICENSED PROFESSIONAL ENGINEER, ARCHITECT, LANDSCAPE ARCHITECT OR LAND SURVEYOR TO ALTER AN ITEM IN ANY WAY. IF AN ITEM BEARING THE STAMP OF A LICENSED PROFESSIONAL IS ALTERED, THE ALTERING ENGINEER, ARCHITECT, LANDSCAPE ARCHITECT OR LAND SURVEYOR SHALL STAMP THE DOCUMENT AND INCLUDE THE NOTATION "ALTERED BY" FOLLOWED BY THEIR SIGNATURE, THE DATE OF SUCH ALTERATION, AND A SPECIFIC DESCRIPTION OF THE ALTERATION.

No.	DATE	SUBMITTAL / REVISION DESCRIPTION	DB	APP
A	04/15/2022	EM&CP REGULATORY SUBMISSION	JM	JR

CHAMPLAIN HUDSON POWER EXPRESS
SEGMENT 2 - ROUTE 22: DRESDEN - WHITEHALL
STA. 12710+00 TO STA. 12740+00 EROSION AND SEDIMENT CONTROL PLAN

DRAWN BY: xxx DESIGNED BY: xxx APPROVED BY: xxx SCALE AS NOTED
REV. NO. X SH.NO.

KIEWIT PROJECT NO. 21162
CHA PROJECT NO. 066076
DRAWING NO. C-408

DATE 04/15/2022
XXX OF XXX