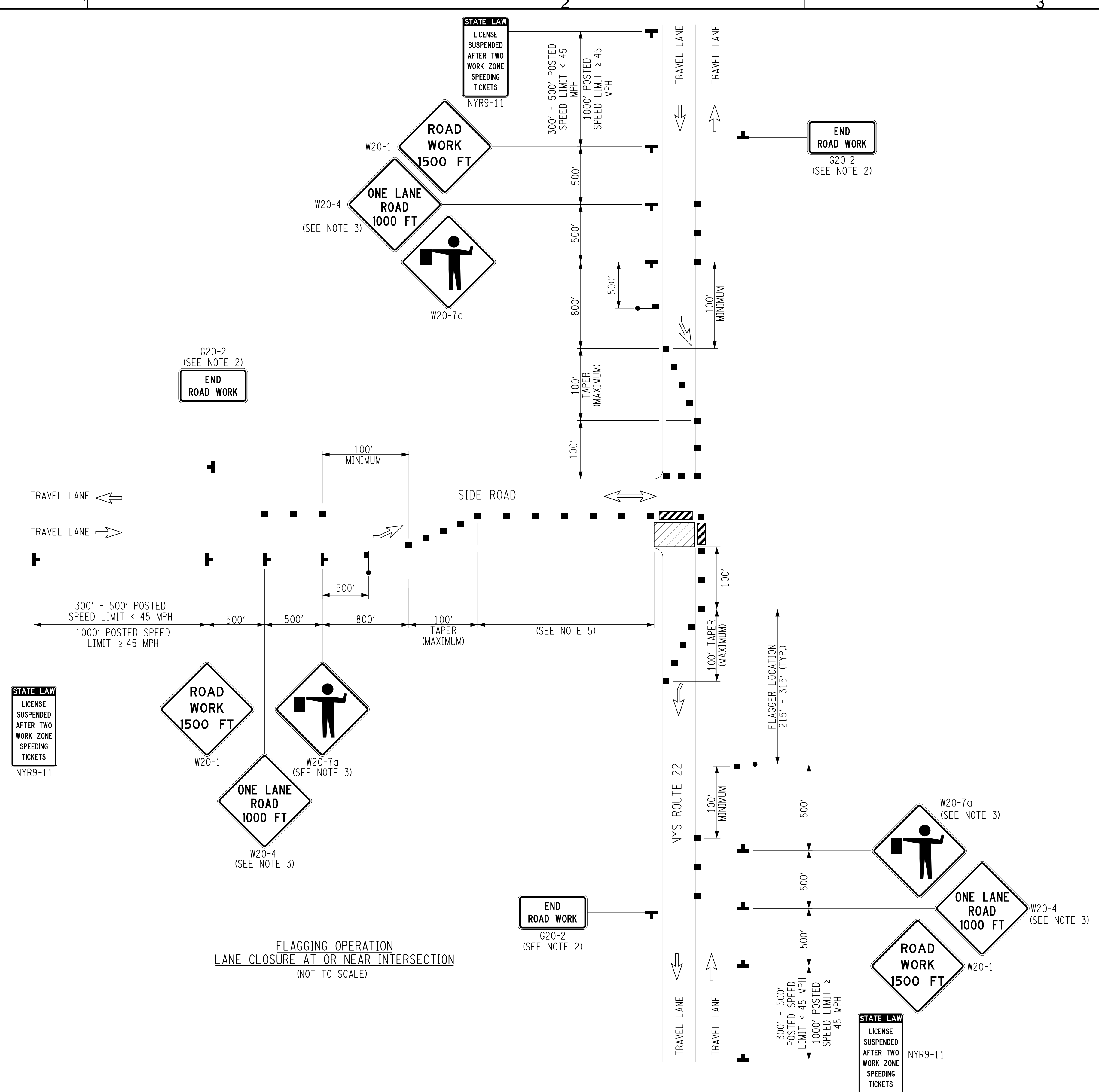


FILE NAME = V:\Projects\NY\K6\066076\000\09_Design\Drawings\HW\Segment 1\066076_cph-sl_wztc-08.dgn



- NOTES:
1. CHANNELIZING DEVICE SPACING (CENTER TO CENTER) SHALL NOT EXCEED 20' IN THE ACTIVE WORK SPACE.
 2. THE END ROAD WORK SIGN (G20-2) SHALL BE PLACED A MAXIMUM OF 500' PAST THE END OF THE WORK SPACE.
 3. FLAGGER SIGN (W20-7a) AND ONE LANE ROAD AHEAD SIGN (W20-4) SHALL BE REMOVED, COVERED OR TURNED AWAY FROM ROAD USERS WHEN FLAGGING OPERATIONS ARE NOT OCCURRING.
 4. ALL FLAGGERS SHALL USE 24" (MIN.) OCTAGON SHAPED STOP/SLOW PADDLES HAVING 6' STAFF.
 5. ADDITIONAL FLAGGERS SHALL BE LOCATED AT ALL INTERSECTIONS AND COMMERCIAL DRIVEWAYS LOCATED WITHIN OR NEAR THE ACTIVE WORK AREA.
 6. NO WORK ACTIVITY, EQUIPMENT, OR STORAGE OF VEHICLES, OR MATERIAL SHALL OCCUR WITHIN THE BUFFER SPACE AT ANY TIME.



IT IS A VIOLATION OF LAW FOR ANY PERSON, UNLESS THEY ARE ACTING UNDER THE DIRECTION OF A LICENSED PROFESSIONAL ENGINEER, ARCHITECT, LANDSCAPE ARCHITECT OR LAND SURVEYOR TO ALTER AN ITEM IN ANY WAY. IF AN ITEM BEARING THE STAMP OF A LICENSED PROFESSIONAL IS ALTERED, THE ALTERING ENGINEER, ARCHITECT, LANDSCAPE ARCHITECT OR LAND SURVEYOR SHALL STAMP THE DOCUMENT AND INCLUDE THE NOTATION "ALTERED BY" FOLLOWED BY THEIR SIGNATURE, THE DATE OF SUCH ALTERATION, AND A SPECIFIC DESCRIPTION OF THE ALTERATION.

No.	DATE	SUBMITTAL / REVISION DESCRIPTION	DB	APP
A	04/15/2022	EM&CP REGULATORY SUBMISSION	MH	JS

CHAMPLAIN HUDSON POWER EXPRESS
SEGMENT 1 - PUTNAM TO DRESDEN
WORK ZONE TRAFFIC CONTROL DETAILS
SHEET 6 OF 11

KIEWIT PROJECT NO.	21162
CHA PROJECT NO.	066076
DRAWING NO.	C-508
DATE	XX/XX/XXXX
SH.NO.	OF XXX

DRAWN BY: DESIGNED BY: APPROVED BY: SCALE REV. NO.

1

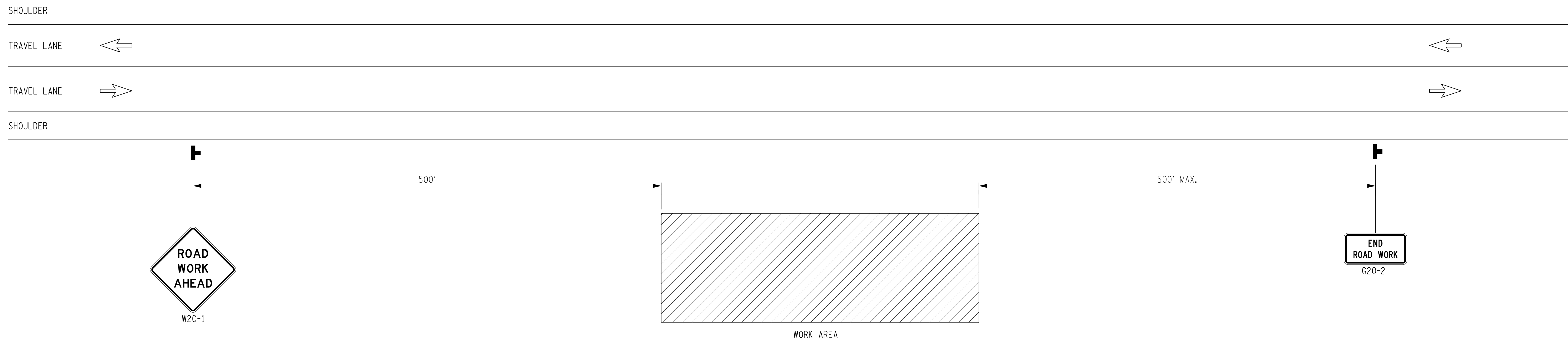
2

3

4

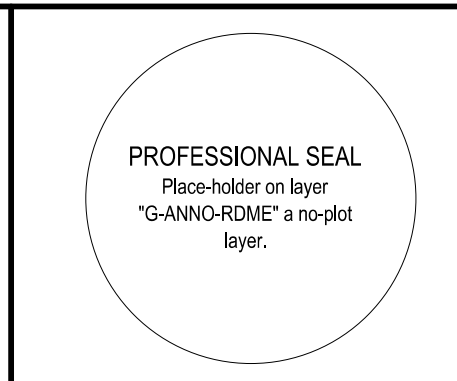
A

B



WZTC - WORK BEYOND SHOULDER
(NOT TO SCALE)

FILE NAME = V:\Projects\NY\K6\066076\000\09_Design\Drawings\Hwy\Segment 1\066076_cph-sl_wztc_09.dgn



IT IS A VIOLATION OF LAW FOR ANY PERSON, UNLESS THEY ARE ACTING UNDER THE DIRECTION OF A LICENSED PROFESSIONAL ENGINEER, ARCHITECT, LANDSCAPE ARCHITECT OR LAND SURVEYOR TO ALTER AN ITEM IN ANY WAY. IF AN ITEM BEARING THE STAMP OF A LICENSED PROFESSIONAL IS ALTERED, THE ALTERING ENGINEER, ARCHITECT, LANDSCAPE ARCHITECT OR LAND SURVEYOR SHALL STAMP THE DOCUMENT AND INCLUDE THE NOTATION "ALTERED BY" FOLLOWED BY THEIR SIGNATURE, THE DATE OF SUCH ALTERATION, AND A SPECIFIC DESCRIPTION OF THE ALTERATION.

No.	DATE	SUBMITTAL / REVISION DESCRIPTION	DB	APP
A	04/15/2022	EM&CP REGULATORY SUBMISSION	MH	JS

CHAMPLAIN HUDSON POWER EXPRESS
SEGMENT 1 - PUTNAM TO DRESDEN
WORK ZONE TRAFFIC CONTROL DETAILS
SHEET 7 OF 11

DRAWN BY: DESIGNED BY: APPROVED BY: SCALE REV. NO.

KIEWIT PROJECT NO.	21162
CHA PROJECT NO.	066076
DRAWING NO.	C-509
DATE SH.NO.	XX/XX/XXXX OF XXX