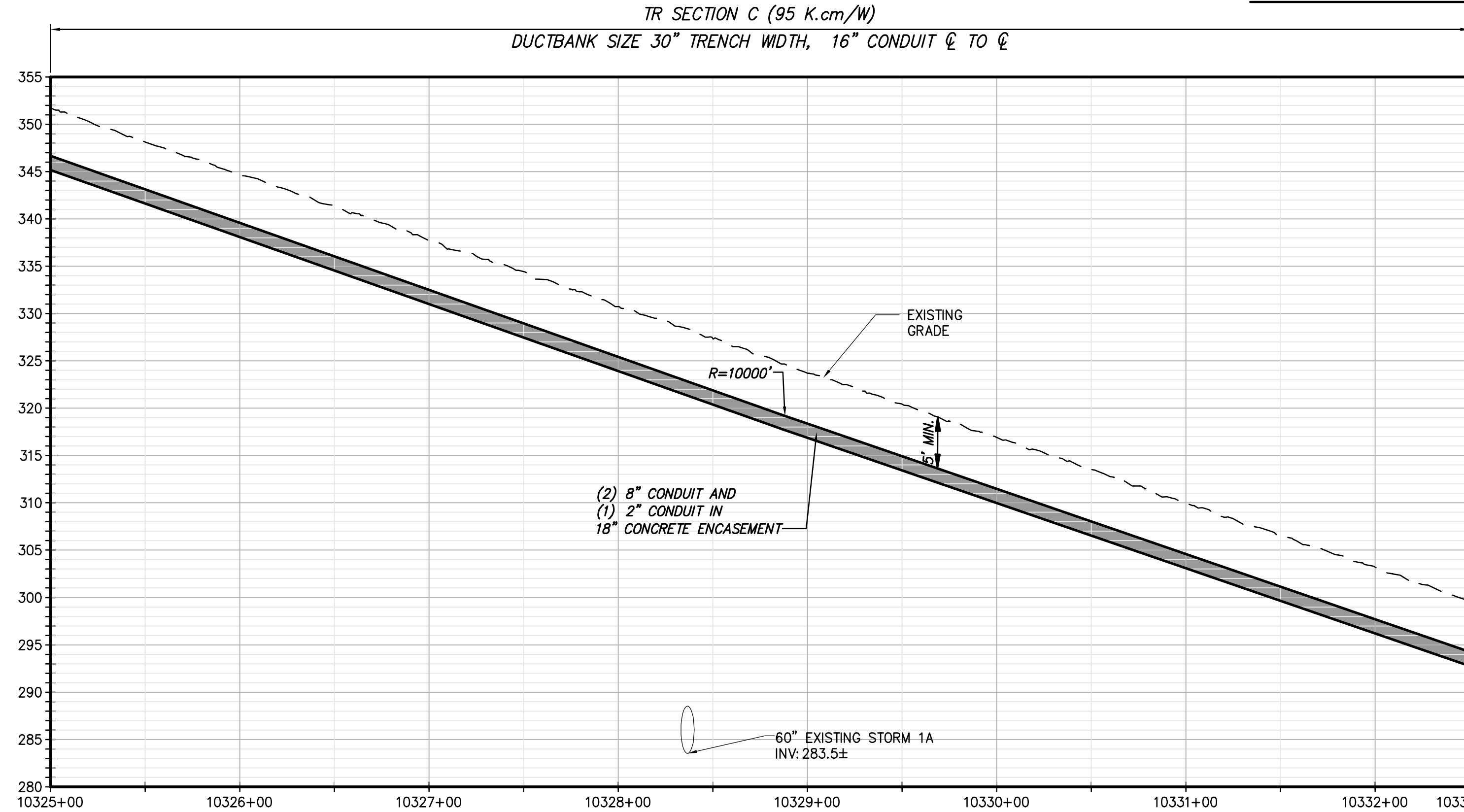
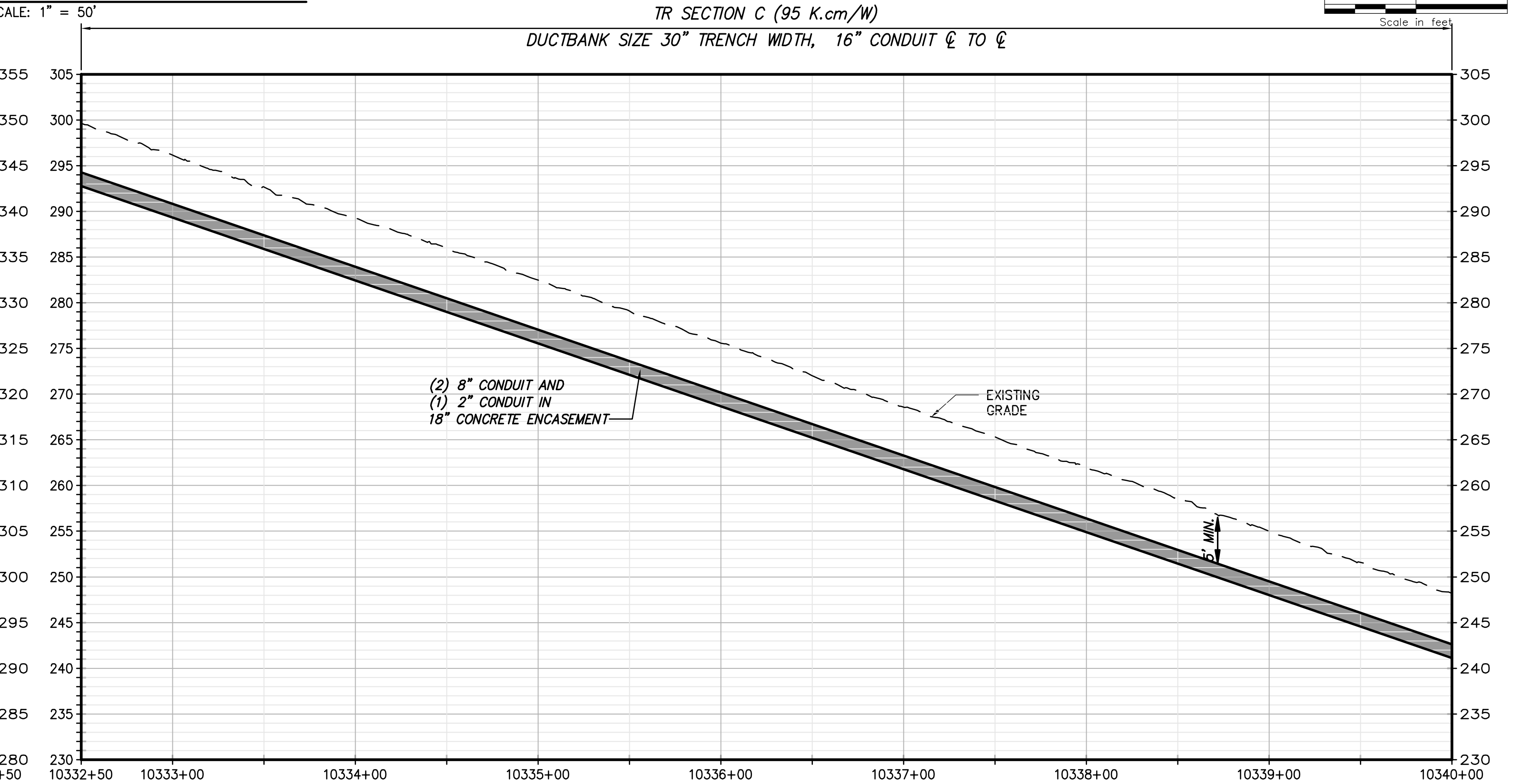


STA. 10325+00 TO STA. 10340+00 PLAN VIEW



STA. 10325+00 TO STA. 10332+50 PROFILE VIEW

SCALE: H:1" = 50' V:1" = 10'



STA. 10332+50 TO STA. 10340+00 PROFILE VIEW

SCALE: H:1" = 50' V:1" = 10'



IT IS A VIOLATION OF LAW FOR ANY PERSON, UNLESS THEY ARE ACTING UNDER THE DIRECTION OF A LICENSED PROFESSIONAL ENGINEER, ARCHITECT, LANDSCAPE ARCHITECT OR LAND SURVEYOR TO ALTER AN ITEM IN ANY WAY. IF AN ITEM BEARING THE STAMP OF A LICENSED PROFESSIONAL IS ALTERED, THE ALTERING ENGINEER, ARCHITECT, LANDSCAPE ARCHITECT OR LAND SURVEYOR SHALL STAMP THE DOCUMENT AND INCLUDE THE NOTATION "ALTERED BY" FOLLOWED BY THEIR SIGNATURE, THE DATE OF SUCH ALTERATION, AND A SPECIFIC DESCRIPTION OF THE ALTERATION.

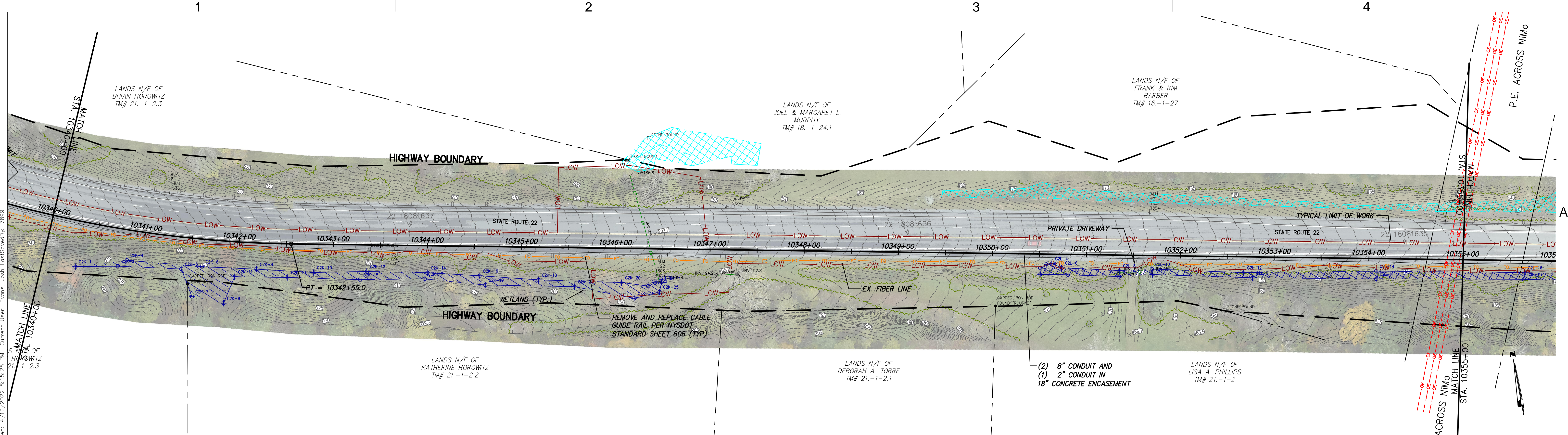
A	04/15/2022	EM&CP REGULATORY SUBMISSION	JM	JR	
No.	DATE	SUBMITTAL / REVISION DESCRIPTION	DB	APP	

CHAMPLAIN HUDSON POWER EXPRESS  
SEGMENT 1- PUTNAM TO DRESDEN  
STA. 10325+00 TO STA. 10340+00

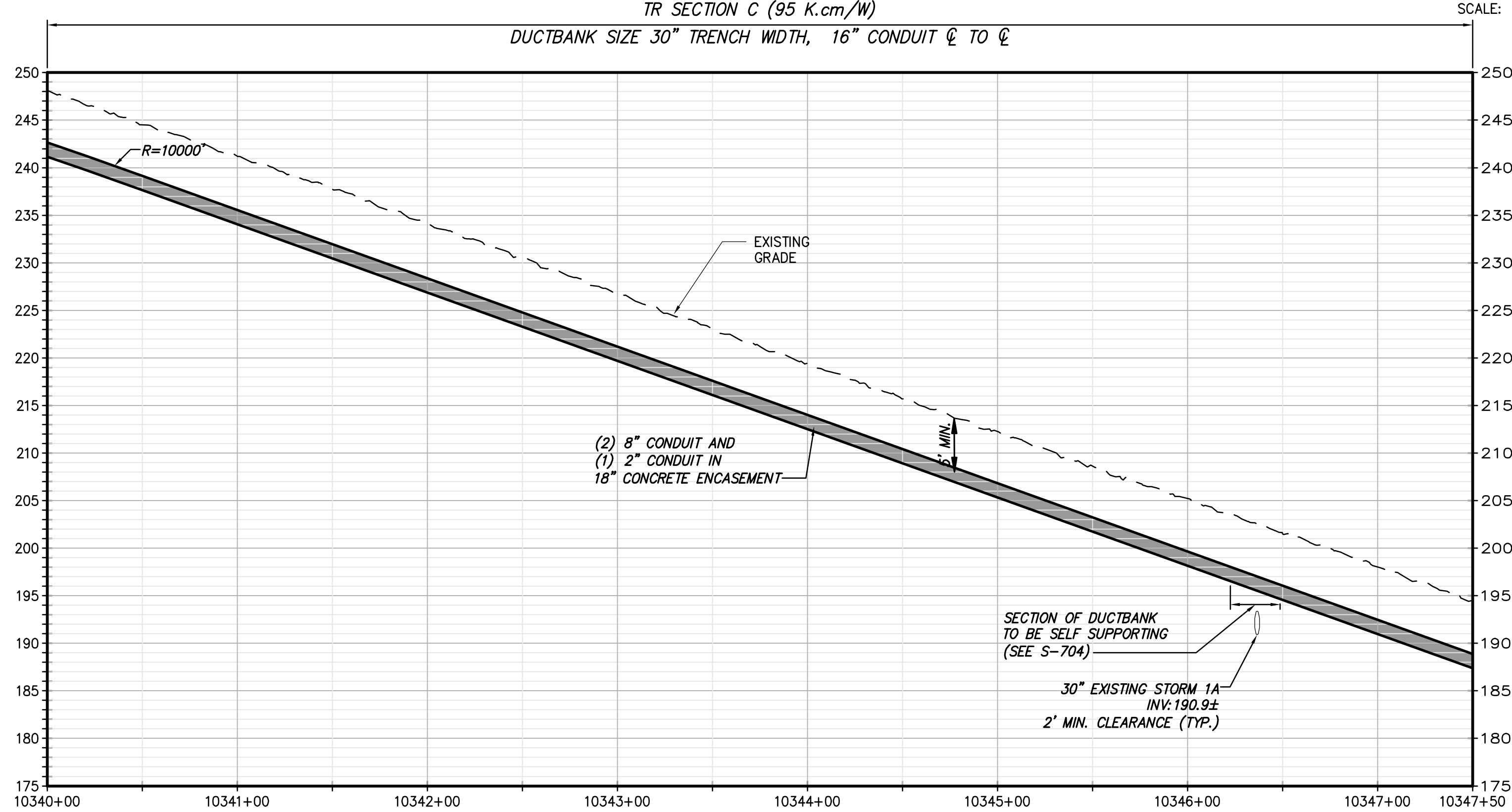
DRAWN BY: JTM DESIGNED BY: JTM APPROVED BY: JPR SCALE AS NOTED  
REV. NO. X SH.NO.

KIEWIT PROJECT NO.	21162
CHA PROJECT NO.	066076
DRAWING NO.	C-123
DATE	04/15/2022
SH.NO.	XXX OF XXX



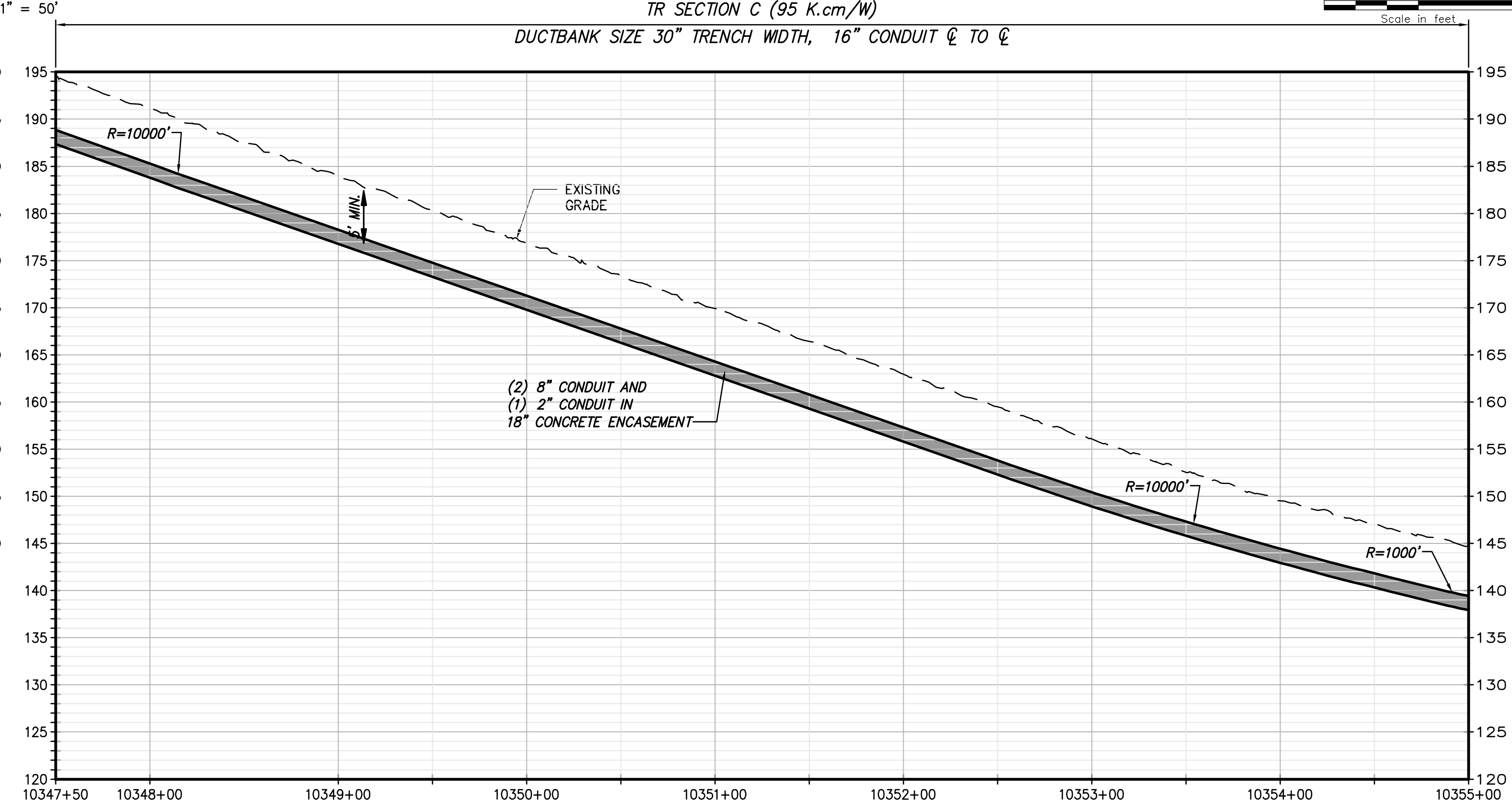


STA. 10340+00 TO STA. 10355+00 PLAN VIEW




STA. 10340+00 TO STA. 10347+50 PROFILE VIEW

SCALE: H:1" = 50' V:1" = 10'




STA. 10347+50 TO STA. 10355+00 PROFILE VIEW


SCALE: H:1" = 50' V:1" = 10'



**Champlain Hudson Power Express**



**Kiewit**



**CHA**  
111 Winners Circle, PO Box 5269  
Albany, NY 12205-0269  
518.453.4500 • www.chacompanies.com

IT IS A VIOLATION OF LAW FOR ANY PERSON, UNLESS THEY ARE ACTING UNDER THE DIRECTION OF A LICENSED PROFESSIONAL ENGINEER, ARCHITECT, LANDSCAPE ARCHITECT OR LAND SURVEYOR TO ALTER AN ITEM IN ANY WAY IF AN ITEM BEARING THE STAMP OF A LICENSED PROFESSIONAL IS ALTERED, THE ALTERING ENGINEER, ARCHITECT, LANDSCAPE ARCHITECT OR LAND SURVEYOR SHALL STAMP THE DOCUMENT AND INCLUDE THE NOTATION "ALTERED BY" FOLLOWED BY THEIR SIGNATURE, THE DATE OF SUCH ALTERATION, AND A SPECIFIC DESCRIPTION OF THE ALTERATION.

No.	DATE	SUBMITTAL / REVISION DESCRIPTION	DB	APP
A	04/15/2022	EM&CP REGULATORY SUBMISSION	JM	JR

**CHAMPLAIN HUDSON POWER EXPRESS**  
**SEGMENT 1- PUTNAM TO DRESDEN**  
**STA. 10340+00 TO STA. 10355+00**

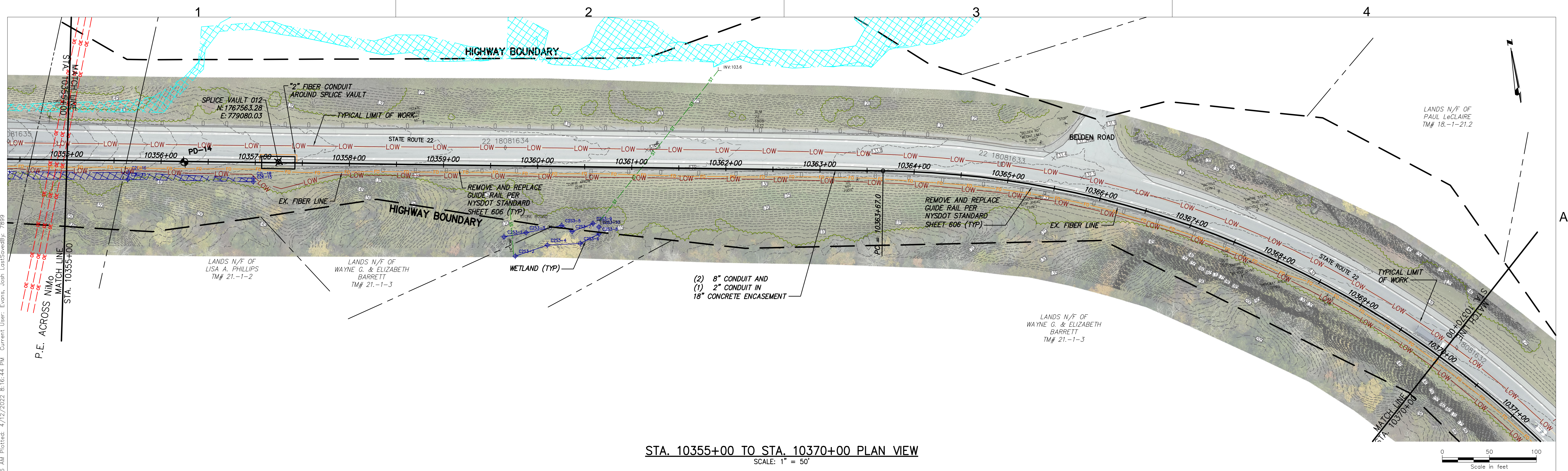
DRAWN BY: JTM DESIGNED BY: JTM APPROVED BY: JPR SCALE AS NOTED  
REV. NO. X

KIEWIT PROJECT NO. 21162  
CHA PROJECT NO. 066076  
DRAWING NO. C-124

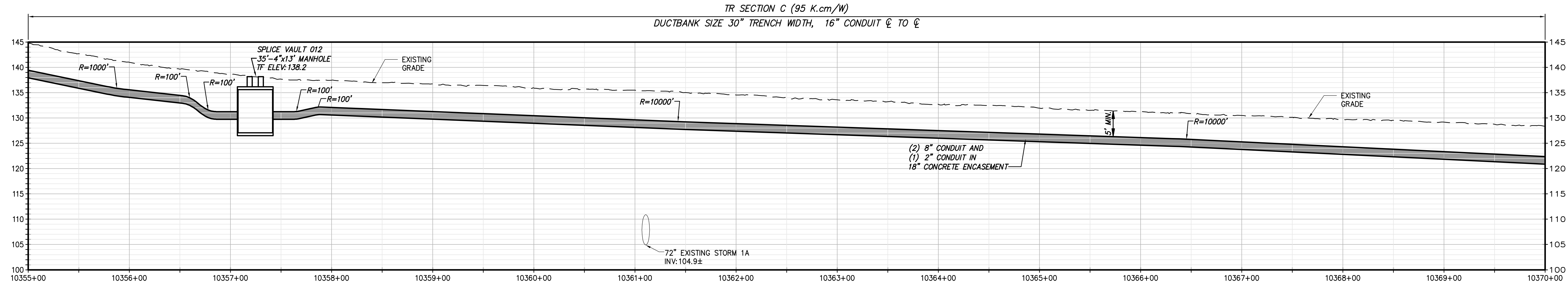
DATE 04/15/2022  
SH.NO. XXX OF XXX



File: V:\PROJECTS\ANY\K\066076.000\09\_DESIGN\DRAWINGS\01\_SHEETS\DESIGN PACKAGE 1A\066076\_1A\_C-121\_C-125.DWG Saved: 4/12/2022 10:55:56 AM Plotted: 4/12/2022 8:16:44 PM Current User: Evans, Josh LastSavedBy: 7899



STA. 10355+00 TO STA. 10370+00 PLAN VIEW  
SCALE: 1" = 50'



STA. 10355+00 TO STA. 10370+00 PROFILE VIEW  
SCALE: H:1" = 50' V:1" = 10'



IT IS A VIOLATION OF LAW FOR ANY PERSON, UNLESS THEY ARE ACTING UNDER THE DIRECTION OF A LICENSED PROFESSIONAL ENGINEER, ARCHITECT, LANDSCAPE ARCHITECT OR LAND SURVEYOR TO ALTER AN ITEM IN ANY WAY IF AN ITEM BEARING THE STAMP OF A LICENSED PROFESSIONAL IS ALTERED, THE ALTERING ENGINEER, ARCHITECT, LANDSCAPE ARCHITECT OR LAND SURVEYOR SHALL STAMP THE DOCUMENT AND INCLUDE THE NOTATION "ALTERED BY" FOLLOWED BY THEIR SIGNATURE, THE DATE OF SUCH ALTERATION, AND A SPECIFIC DESCRIPTION OF THE ALTERATION.

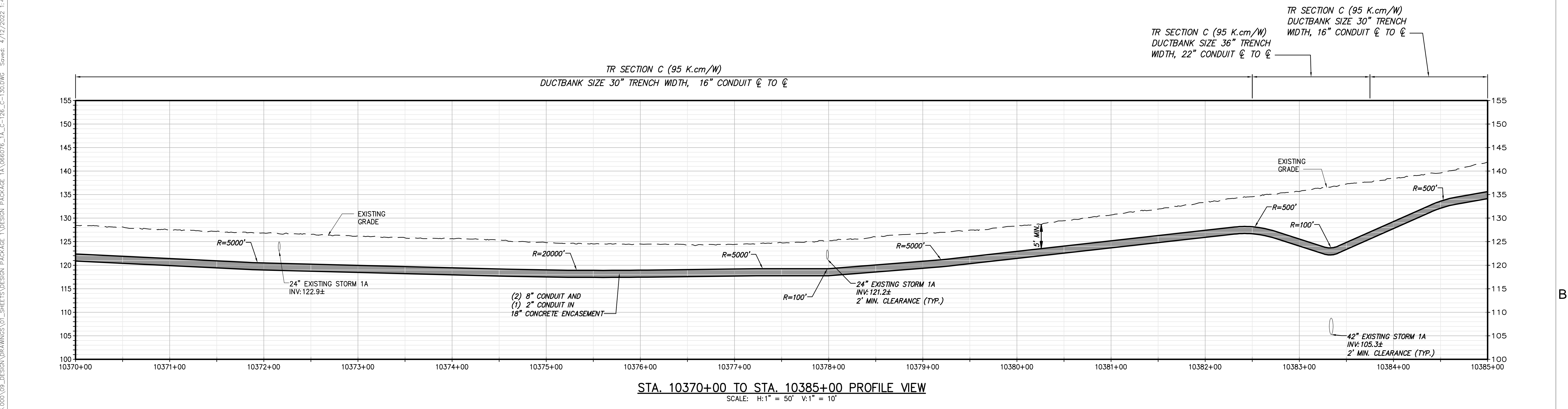
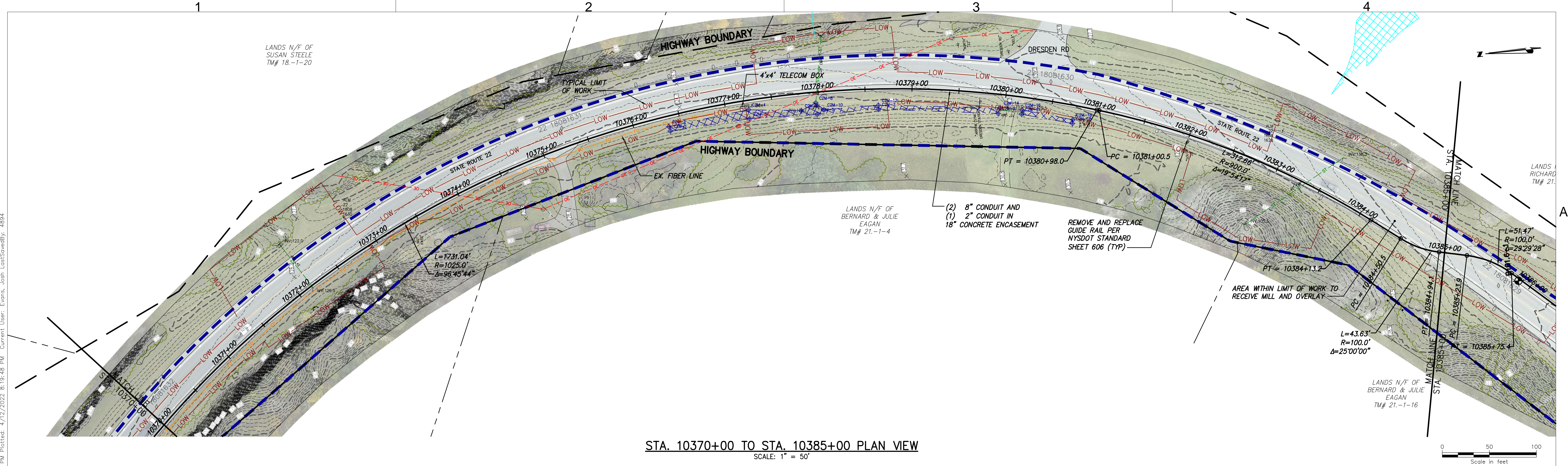
A	04/15/2022	EM&CP REGULATORY SUBMISSION	JM	JR	
No.	DATE	SUBMITTAL / REVISION DESCRIPTION	DB	APP	

CHAMPLAIN HUDSON POWER EXPRESS  
SEGMENT 1 - PUTNAM TO DRESDEN  
STA. 10355+00 TO STA. 10370+00

DRAWN BY: JTM DESIGNED BY: JTM APPROVED BY: JPR SCALE AS NOTED DATE 04/15/2022  
REV. NO. X SH.NO. XXX OF XXX

KIEWIT PROJECT NO.	21162
CHA PROJECT NO.	066076
DRAWING NO.	C-125
DATE	04/15/2022
SH.NO.	XXX OF XXX





CHPE

Champlain Hudson  
Power Express

PKS

Kiewit

CHA

III Winners Circle, PO Box 5269  
Albany, NY 12205-0269  
518.453.4500 • www.chacompanies.com

IT IS A VIOLATION OF LAW FOR ANY PERSON, UNLESS THEY ARE ACTING UNDER THE DIRECTION OF A LICENSED PROFESSIONAL ENGINEER, ARCHITECT, LANDSCAPE ARCHITECT OR LAND SURVEYOR TO ALTER AN ITEM IN ANY WAY IF AN ITEM BEARING THE STAMP OF A LICENSED PROFESSIONAL IS ALTERED, THE ALTERING ENGINEER, ARCHITECT, LANDSCAPE ARCHITECT OR LAND SURVEYOR SHALL STAMP THE DOCUMENT AND INCLUDE THE NOTATION "ALTERED BY" FOLLOWED BY THEIR SIGNATURE, THE DATE OF SUCH ALTERATION, AND A SPECIFIC DESCRIPTION OF THE ALTERATION.

No.	DATE	SUBMITTAL / REVISION DESCRIPTION	DB	APP
A	04/15/2022	EM&CP REGULATORY SUBMISSION	JM	JR

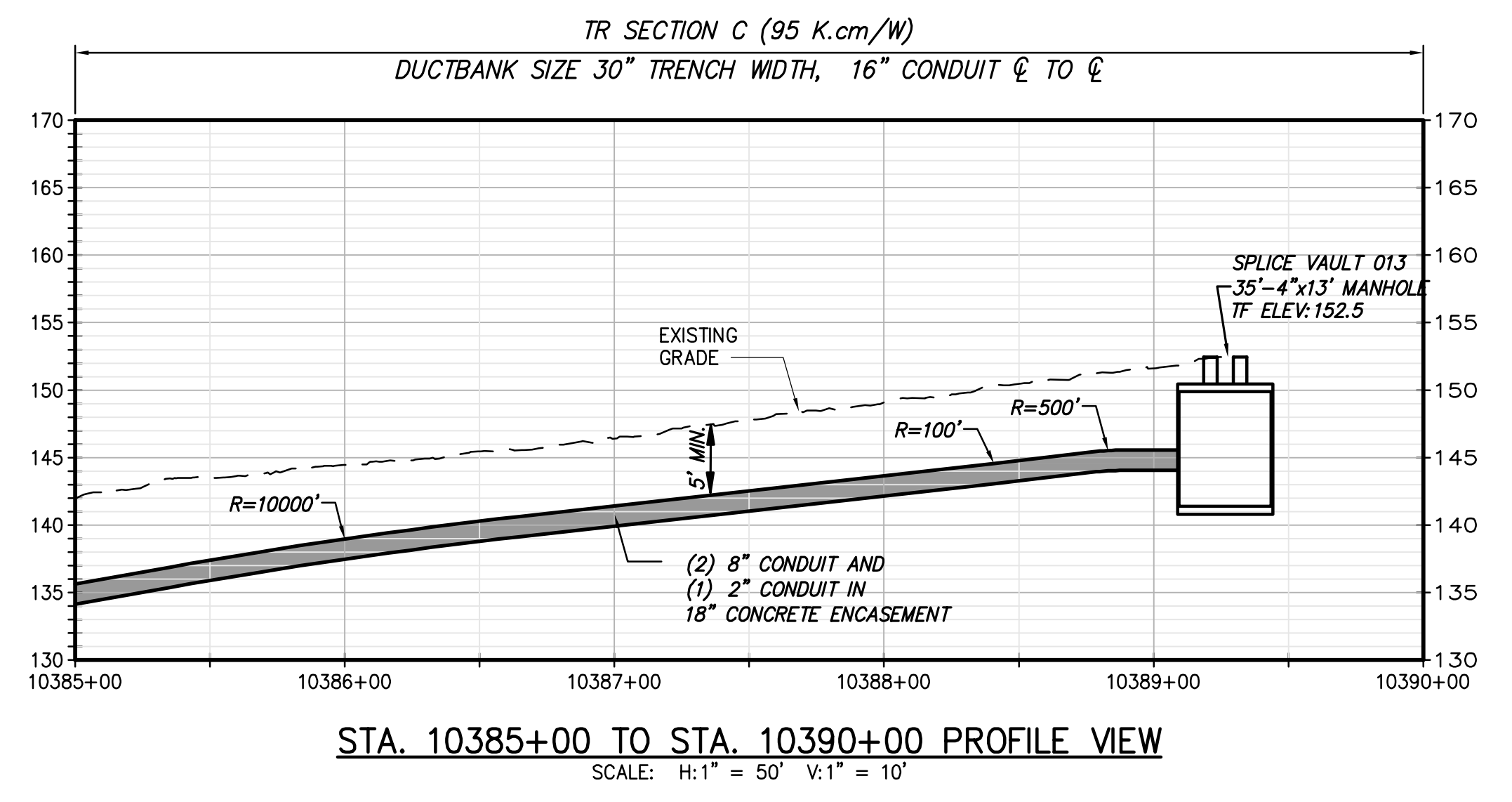
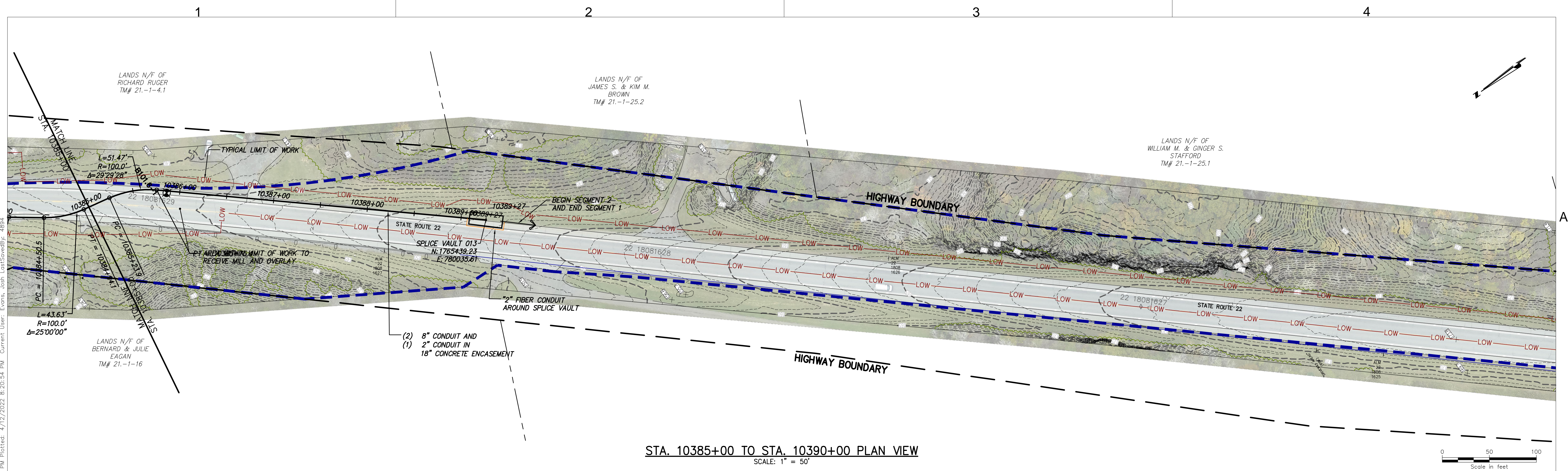
CHAMPLAIN HUDSON POWER EXPRESS  
SEGMENT 1- PUTNAM TO DRESDEN  
STA. 10370+00 TO STA. 10385+00




DRAWN BY: JTM DESIGNED BY: JTM APPROVED BY: JPR  
SCALE AS NOTED  
REV. NO. X

KIEWIT PROJECT NO.  
21162  
CHA PROJECT NO.  
066076  
DRAWING NO.  
C-126

DATE  
04/15/2022  
SH.NO.  
XXX OF XXX







III Winners Circle, PO Box 5269  
Albany, NY 12205-0269  
518.453.4500 • www.chacompanies.com

IT IS A VIOLATION OF LAW FOR ANY PERSON, UNLESS THEY ARE ACTING UNDER THE DIRECTION OF A LICENSED PROFESSIONAL ENGINEER, ARCHITECT, LANDSCAPE ARCHITECT OR LAND SURVEYOR TO ALTER AN ITEM IN ANY WAY. IF AN ITEM BEARING THE STAMP OF A LICENSED PROFESSIONAL IS ALTERED, THE ALTERING ENGINEER, ARCHITECT, LANDSCAPE ARCHITECT OR LAND SURVEYOR SHALL STAMP THE DOCUMENT AND INCLUDE THE NOTATION "ALTERED BY" FOLLOWED BY THEIR SIGNATURE, THE DATE OF SUCH ALTERATION, AND A SPECIFIC DESCRIPTION OF THE ALTERATION.

No.	DATE	SUBMITTAL / REVISION DESCRIPTION	DB	APP
A	04/15/2022	EM&CP REGULATORY SUBMISSION	JM	JR

### CHAMPLAIN HUDSON POWER EXPRESS

#### SEGMENT 1 - PUTNAM TO DRESDEN

STA. 10385+00 TO STA. 10390+00

DRAWN BY: JTM  
DESIGNED BY: JTM  
APPROVED BY: JPR

SCALE: AS NOTED  
REV. NO. X


KIEWIT PROJECT NO. 21162	
CHA PROJECT NO. 066076	
DRAWING NO. C-127	
DATE 04/15/2022	SH.NO. XXX OF XXX






- STAGING AND LAYDOWN AREA NOTES:**
1. CONTRACTOR TO INSTALL EROSION CONTROL MEASURES PRIOR TO CONSTRUCTION OF THE LAYDOWN AREA.
  2. FOR CONSTRUCTION OF THE LAYDOWN AREA, CONTRACTOR TO INSTALL FABRIC AND STONE DIRECTLY ON EXISTING GRADE.
  3. LAYDOWN AREA SHALL NOT BE CONSTRUCTED WITHIN WETLAND AREAS.
  4. FUELING OPERATIONS SHALL NOT TAKE PLACE WITHIN 100 FEET OF ANY KNOWN WETLAND OR STREAM OR WITHIN 200 FEET OF ANY POTABLE WATER SOURCE.
  5. AT THE COMPLETING OF CONSTRUCTION, CONTRACTOR TO REMOVE STONE, FABRIC AND RESTORE TO EXISTING CONDITIONS IN ACCORDANCE WITH THE RESTORATION SECTION FOR AGRICULTURAL LANDS AS IDENTIFIED WITHIN THE EM&CP.


**RYDER ROAD STAGING AND LAYDOWN AREA (SOUTH)**  
SCALE: 1" = 40'



**Champlain Hudson  
Power Express**



**Kiewit**



III Winners Circle, PO Box 5269  
Albany, NY 12205-0269  
518.453.4500 • www.chacompanies.com

IT IS A VIOLATION OF LAW FOR ANY PERSON, UNLESS THEY ARE ACTING UNDER THE DIRECTION OF A LICENSED PROFESSIONAL ENGINEER, ARCHITECT, LANDSCAPE ARCHITECT OR LAND SURVEYOR TO ALTER AN ITEM IN ANY WAY IF AN ITEM BEARING THE STAMP OF A LICENSED PROFESSIONAL IS ALTERED, THE ALTERING ENGINEER, ARCHITECT, LANDSCAPE ARCHITECT OR LAND SURVEYOR SHALL STAMP THE DOCUMENT AND INCLUDE THE NOTATION "ALTERED BY" FOLLOWED BY THEIR SIGNATURE, THE DATE OF SUCH ALTERATION, AND A SPECIFIC DESCRIPTION OF THE ALTERATION.

No.	DATE	SUBMITTAL / REVISION DESCRIPTION	DB	APP
A	04/15/2022	EM&CP REGULATORY SUBMISSION	JM	JR

**CHAMPLAIN HUDSON POWER EXPRESS**  
**SEGMENT 1- PUTNAM TO DRESDEN**  
**RYDER ROAD STAGING AND LAYDOWN AREA (SOUTH)**

DRAWN BY: JTM DESIGNED BY: JTM APPROVED BY: JPR SCALE AS NOTED  
REV. NO. X SH.NO.

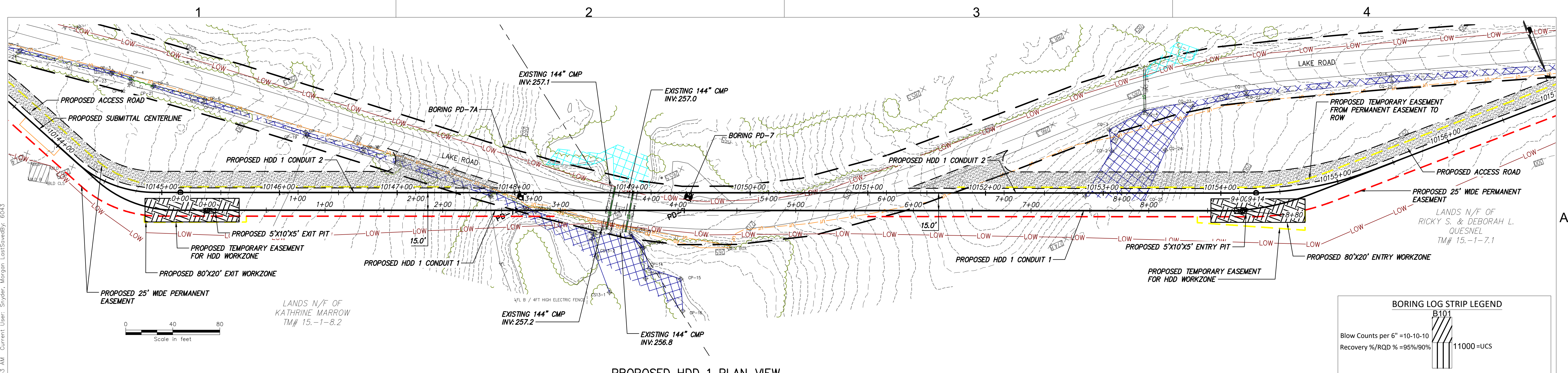
KIEWIT PROJECT NO. 21162  
CHA PROJECT NO. 066076  
DRAWING NO. C-201

DATE 04/15/2022  
XXX OF XXX

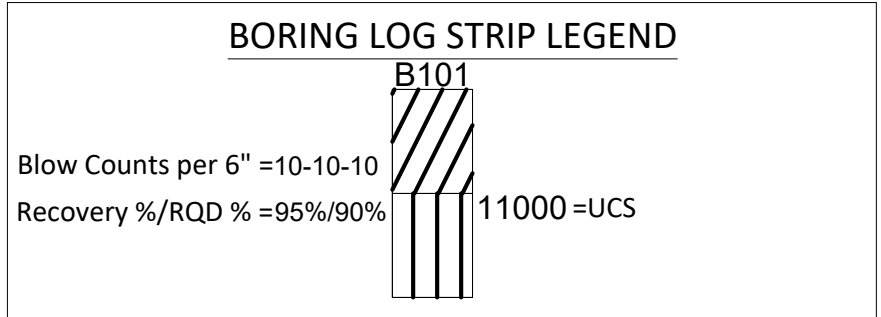




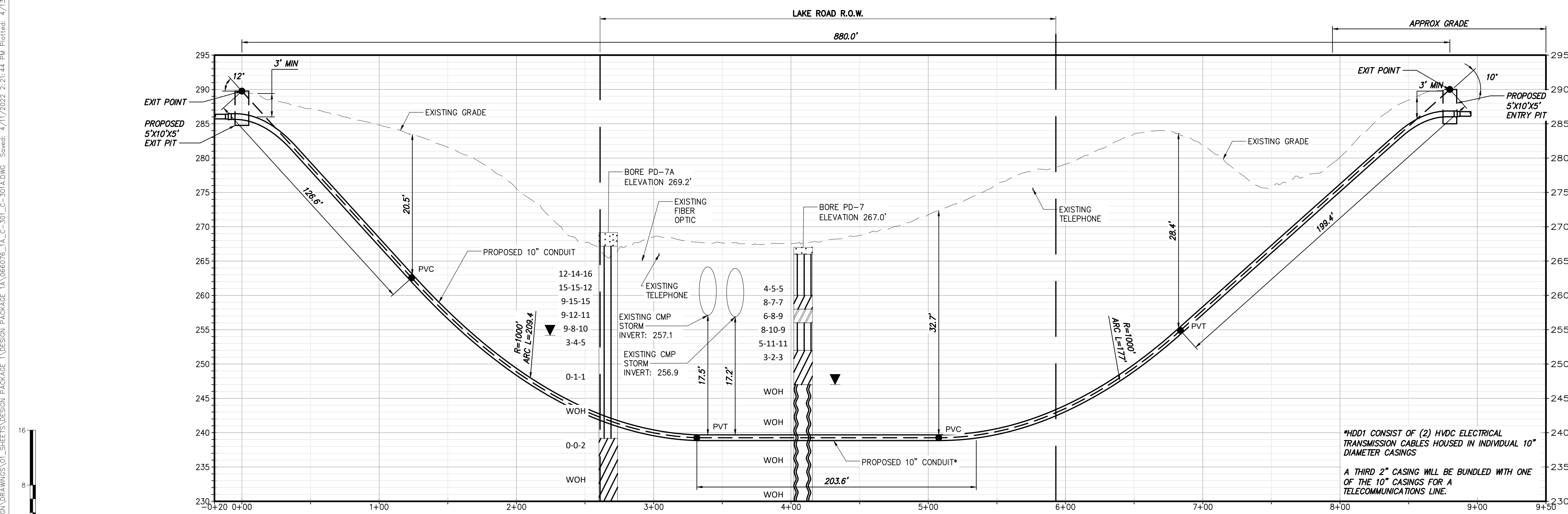




PROPOSED HDD 1 PLAN VIEW  
CONDUIT 1



Legend		
	ASPHALT	Asphalt
	CH	Fat CLAY
	CL	Lean CLAY
	CL-ML	SILTY CLAY
	CONCRETE	Concrete
	FILL	Fill
	GC	CLAYEY GRAVEL
	GM	SILTY GRAVEL
	Gneiss	Undefined
	GP	Poorly Graded GRAVEL
	GW	Well Graded GRAVEL
	ML	SILT
	OL	ORGANIC Lean CLAY
	OL/OH	ORGANIC SOIL
	Rock	Undefined
	Sandstone	Sandstone
	SC	CLAYEY SAND
	SC-SM	SILT, CLAYEY SAND
	SHALE	Shale
	SM	SILTY SAND
	SP	Poorly Graded SAND
	SP-SM	Poorly Graded SAND with SILT
	SW	Well graded SAND
	Topsoil	Topsoil
	USGS 708	Gneiss
	USGS 718	Granite 1
	USGS 732	Quartz



PROPOSED HDD 1 PROFILE VIEW  
CONDUIT 1

CHAMPLAIN HUDSON POWER EXPRESS  
SEGMENT 1 - PUTNAM TO DRESDEN  
HDD 1 PLAN AND PROFILE - CONDUIT 1  
BOX CULVERT CROSSING, CONDUIT 1  
WHITEHALL, WASHINGTON COUNTY, NY

KIEWIT PROJECT NO.	21162
CHA PROJECT NO.	066076
DRAWING NO.	C-301

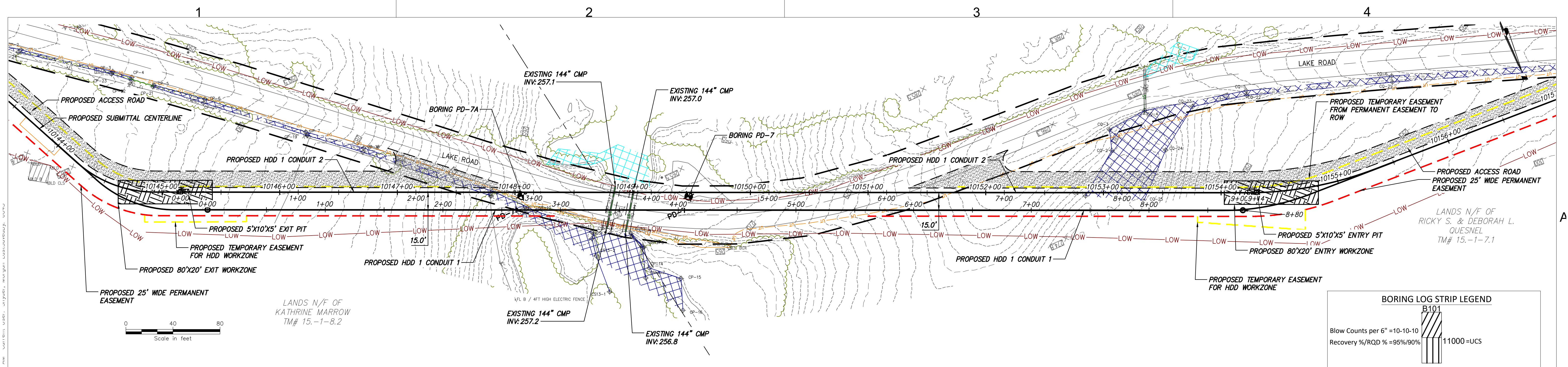


IT IS A VIOLATION OF LAW FOR ANY PERSON, UNLESS THEY ARE ACTING UNDER THE DIRECTION OF A LICENSED PROFESSIONAL ENGINEER, ARCHITECT, LANDSCAPE ARCHITECT OR LAND SURVEYOR TO ALTER AN ITEM IN ANY WAY. IF AN ITEM BEARING THE STAMP OF A LICENSED PROFESSIONAL IS ALTERED, THE ALTERING ENGINEER, ARCHITECT, LANDSCAPE ARCHITECT OR LAND SURVEYOR SHALL STAMP THE DOCUMENT AND INCLUDE THE NOTATION "ALTERED BY" FOLLOWED BY THEIR SIGNATURE, THE DATE OF SUCH ALTERATION, AND A SPECIFIC DESCRIPTION OF THE ALTERATION.

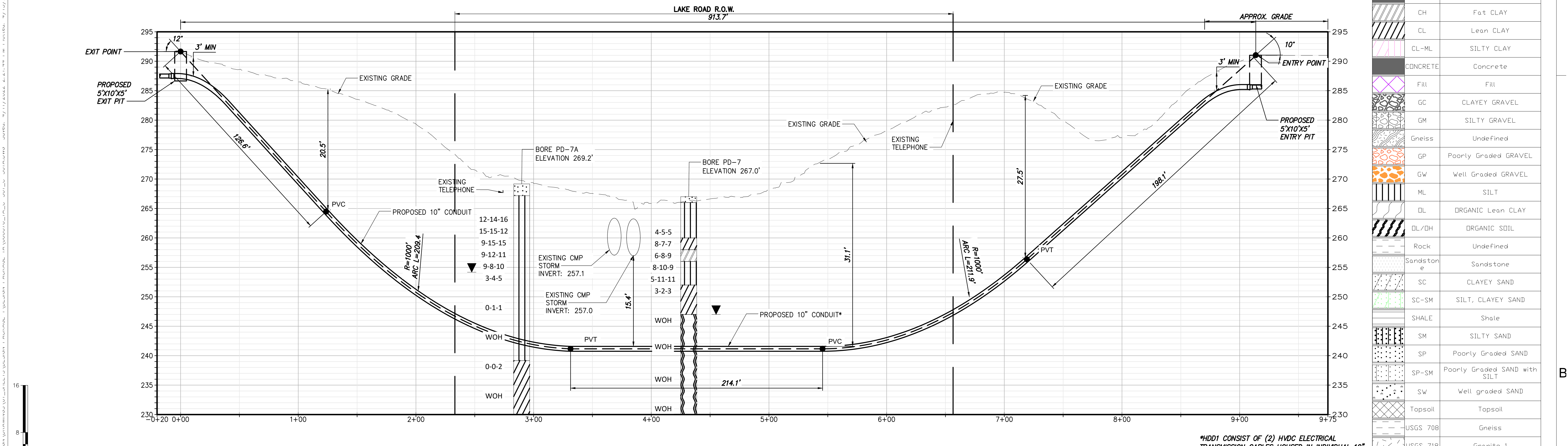
A	04/15/2022	EM&CP REGULATORY SUBMISSION	JM	JR
No.	DATE	SUBMITTAL / REVISION DESCRIPTION	DB	APP

DRAWN BY:	TAR	DESIGNED BY:	TAR	APPROVED BY:	JEO	SCALE	AS NOTED	DATE	04/15/2022
						REV. NO.	B	SH.NO.	XXX OF XXX





PROPOSED HDD 1 PLAN VIEW  
CONDUIT 2



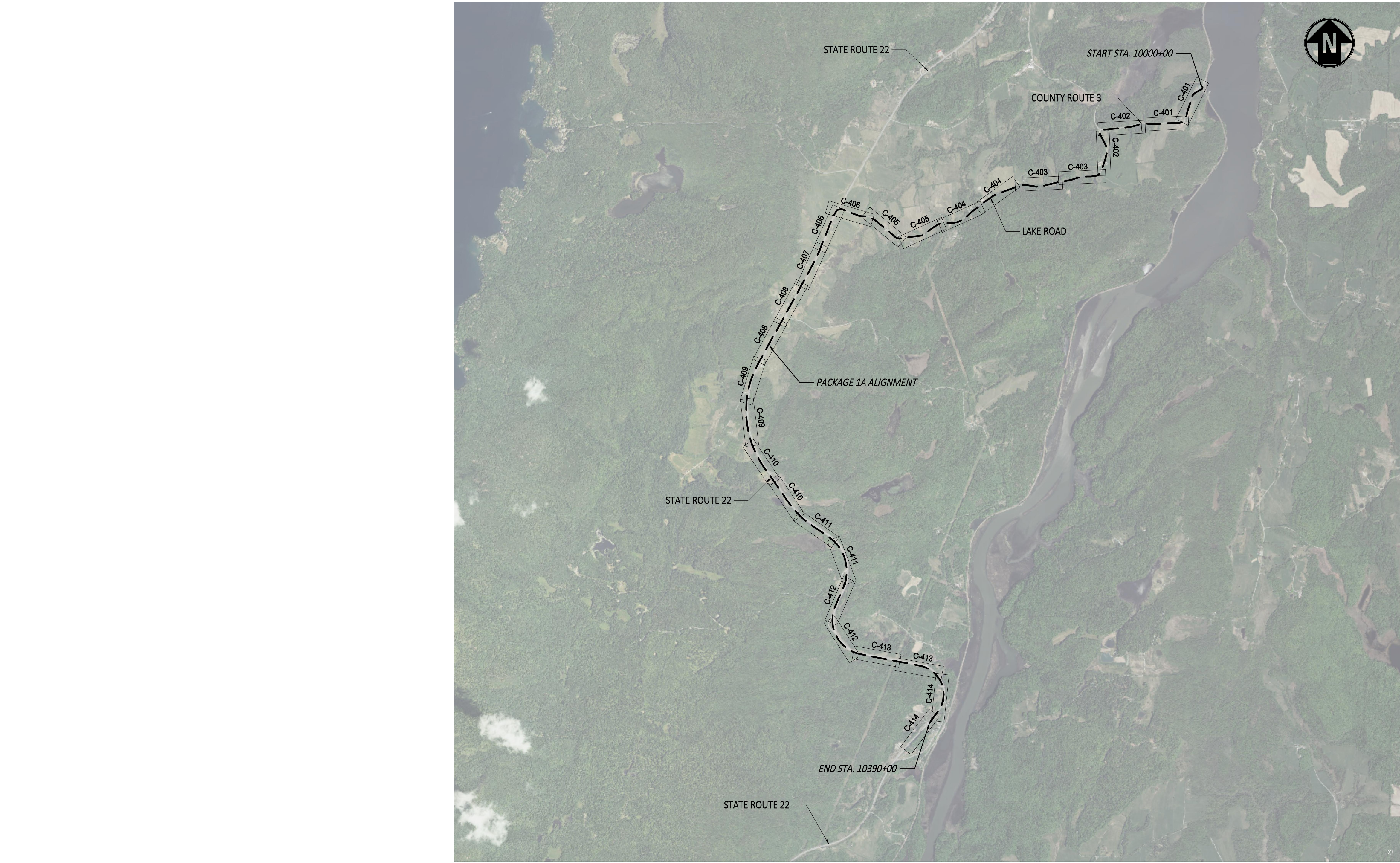
PROPOSED HDD 1 PROFILE VIEW  
CONDUIT 2

Legend		
	ASPHALT	Asphalt
	CH	Fat CLAY
	CL	Lean CLAY
	CL-ML	SILTY CLAY
	CONCRETE	Concrete
	FILL	Fill
	GC	CLAYEY GRAVEL
	GM	SILTY GRAVEL
	Gneiss	Undefined
	GP	Poorly Graded GRAVEL
	GW	Well Graded GRAVEL
	ML	SILT
	OL	ORGANIC Lean CLAY
	OL/OH	ORGANIC SOIL
	Rock	Undefined
	Sandstone	Sandstone
	SC	CLAYEY SAND
	SC-SM	SILT, CLAYEY SAND
	SHALE	Shale
	SM	SILTY SAND
	SP	Poorly Graded SAND
	SP-SM	Poorly Graded SAND with SILT
	SW	Well graded SAND
	Topsoil	Topsoil
	USGS 708	Gneiss
	USGS 718	Granite 1
	USGS 732	Quartz

\*HDD1 CONSIST OF (2) HVDC ELECTRICAL TRANSMISSION CABLES HOUSED IN INDIVIDUAL 10" DIAMETER CASINGS  
A THIRD 3" CASING WILL BE BUNDLED WITH ONE OF THE 10" CASINGS FOR A TELECOMMUNICATIONS LINE.



File: V:\PROJECTS\ANY\6\066076\_000\09\_DESIGN\DRAWINGS\01\_SHEETS\DESIGN PACKAGE 1A\066076\_1A\_C-400.DWG Saved: 3/7/2022 2:14:17 PM Plotted: 4/12/2022 8:28:49 PM Current User: Evans, Josh LastSavedBy: 7895



E&S KEY MAP  
SCALE: 1" = 2000'



IT IS A VIOLATION OF LAW FOR ANY PERSON, UNLESS THEY ARE ACTING UNDER THE DIRECTION OF A LICENSED PROFESSIONAL ENGINEER, ARCHITECT, LANDSCAPE ARCHITECT OR LAND SURVEYOR TO ALTER AN ITEM IN ANY WAY. IF AN ITEM BEARING THE STAMP OF A LICENSED PROFESSIONAL IS ALTERED, THE ALTERING ENGINEER, ARCHITECT, LANDSCAPE ARCHITECT OR LAND SURVEYOR SHALL STAMP THE DOCUMENT AND INCLUDE THE NOTATION "ALTERED BY" FOLLOWED BY THEIR SIGNATURE, THE DATE OF SUCH ALTERATION, AND A SPECIFIC DESCRIPTION OF THE ALTERATION.

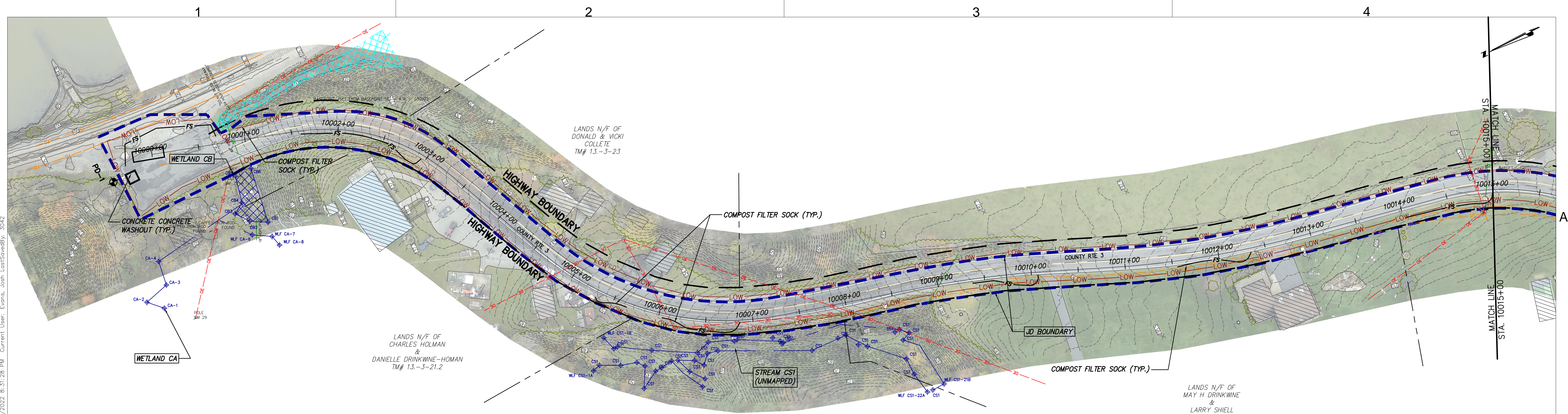
A	04/15/2022	EM&CP REGULATORY SUBMISSION	JM	JR	
No.	DATE	SUBMITTAL / REVISION DESCRIPTION	DB	APP	

CHAMPLAIN HUDSON POWER EXPRESS  
SEGMENT 1 - PUTNAM TO DRESDEN  
KEYPLAN E&S

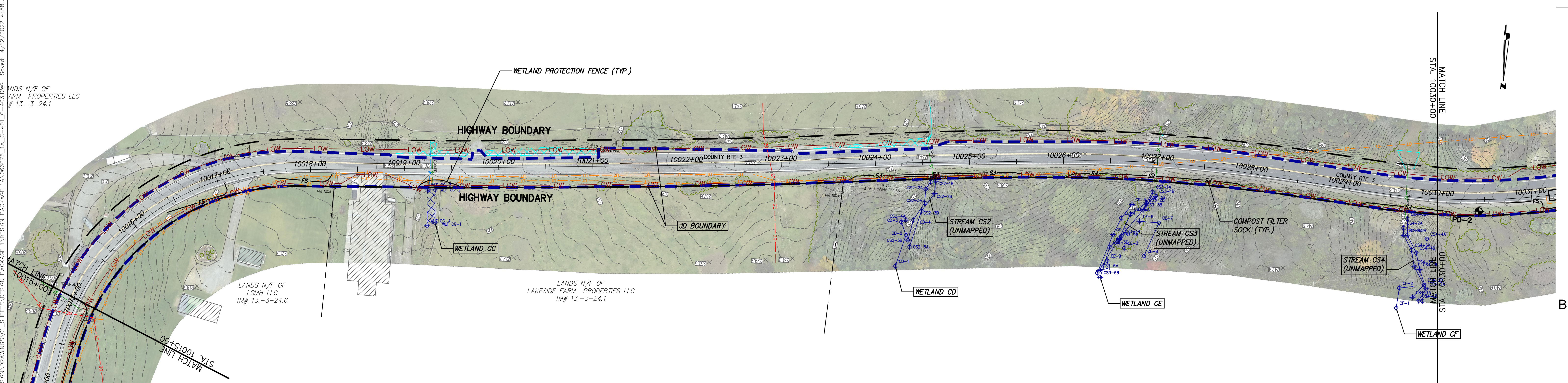
DRAWN BY: JTM DESIGNED BY: JTM APPROVED BY: JPR SCALE AS NOTED  
REV. NO. X

KIEWIT PROJECT NO.	21162
CHA PROJECT NO.	066076
DRAWING NO.	C-400
DATE	04/15/2022
SH.NO.	XXX OF XXX








STA. 10000+00 TO STA. 10015+00 PLAN VIEW  
SCALE: 1" = 50'



STA. 10015+00 TO STA. 10030+00 PLAN VIEW  
SCALE: 1" = 50'



III Winners Circle, PO Box 5269  
Albany, NY 12205-0269  
518.453.4500 • www.chacompanies.com

IT IS A VIOLATION OF LAW FOR ANY PERSON, UNLESS THEY ARE ACTING UNDER THE DIRECTION OF A LICENSED PROFESSIONAL ENGINEER, ARCHITECT, LANDSCAPE ARCHITECT OR LAND SURVEYOR TO ALTER AN ITEM IN ANY WAY. IF AN ITEM BEARING THE STAMP OF A LICENSED PROFESSIONAL IS ALTERED, THE ALTERING ENGINEER, ARCHITECT, LANDSCAPE ARCHITECT OR LAND SURVEYOR SHALL STAMP THE DOCUMENT AND INCLUDE THE NOTATION "ALTERED BY" FOLLOWED BY THEIR SIGNATURE, THE DATE OF SUCH ALTERATION, AND A SPECIFIC DESCRIPTION OF THE ALTERATION.

A	04/15/2022	EM&CP REGULATORY SUBMISSION	JM	JR
No.	DATE	SUBMITTAL / REVISION DESCRIPTION	DB	APP

**CHAMPLAIN HUDSON POWER EXPRESS**  
**SEGMENT 1- PUTNAM TO DRESDEN**  
**STA. 10000+00 TO STA. 10030+00**  
**EROSION AND SEDIMENT CONTROL PLAN**

DRAWN BY:	xxx	DESIGNED BY:	xxx	APPROVED BY:	xxx	SCALE:	AS NOTED
						REV. NO.	X

KIEWIT PROJECT NO.	21162
CHA PROJECT NO.	068076
DRAWING NO.	C-401
DATE	04/15/2022
SH.NO.	XXX OF XXX