

*Attachment C – Wetland and Stream Photographs
Champlain Hudson Power Express Project*



Shallow emergent marsh (B54, Whitehall, Washington County)



Shallow emergent marsh (C34, Clifton Park, Schenectady County)



Shallow emergent marsh (E10, Guilderland, Albany County)



Shallow emergent marsh (M47, New Baltimore, Greene County)



Shallow emergent marsh (M32, Cossackie, Greene County)



Deep emergent marsh (B56, Whitehall, Washington County)



Deep emergent marsh (C23, Clifton Park, Saratoga County)



Deep emergent marsh (E15, Guilderland, Albany County)



Deep emergent marsh (M36, Cossackie, Greene County)



Deep emergent marsh (Y16, Athens, Greene County)



Reedgrass/purple loosestrife marsh (B30, Ballston, Saratoga County)



Reedgrass/purple loosestrife marsh (C29, Clifton Park, Saratoga County)



Reedgrass/purple loosestrife marsh (E8, Rotterdam, Schenectady County)



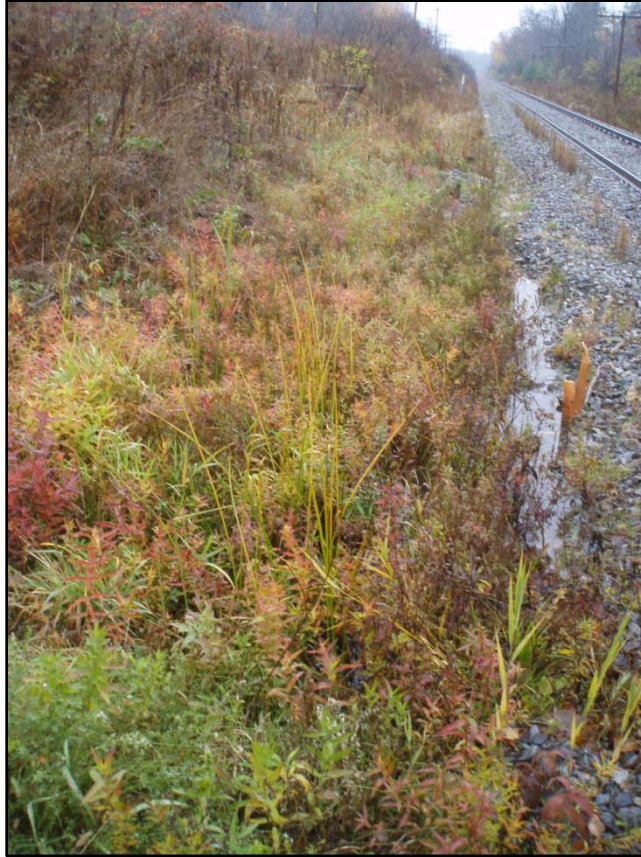
Reedgrass/purple loosestrife marsh (M8, Catskill, Greene County)



Reedgrass/purple loosestrife marsh (M2, Catskill, Greene County)



Ditch/artificial intermittent stream (B20, Ballston, Saratoga County)



Ditch/artificial intermittent stream (C2, Ballston, Saratoga County)



Ditch/artificial intermittent stream (E41, New Scotland, Albany County)



Intermittent stream (MS62, Coeymans, Albany County)



Intermittent stream (MS39, Cossackie, Greene County)



Scrub shrub wetland (A22, Moreau, Saratoga County)



Scrub shrub wetland (B6, Saratoga Springs, Saratoga County)



Scrub shrub wetland (E43, New Scotland, Albany County)



Scrub shrub wetland (M9, Catskill, Greene County)



Scrub shrub wetland (M6, Catskill, Greene County)



Red maple-hardwood swamp (A49, Northumberland, Saratoga County)



Red maple-hardwood swamp (C15, Ballston, Saratoga County)



Red maple-hardwood swamp (E96, Guilderland, Albany County)



Red maple-hardwood swamp (M70, Bethlehem, Albany County)



Red maple-hardwood swamp (M69, Coeymans, Albany County)



Floodplain forest (D10, Whitehall, Washington County)



Floodplain forest (A12, Moreau, Saratoga County)



Floodplain forest (M64, Coeymans, Albany County)



Silver maple-ash swamp (Fort Ann, Washington County)



Silver maple-ash swamp (M1, Catskill, Greene County)



Palustrine open water (D9, Saratoga Springs, Saratoga County)



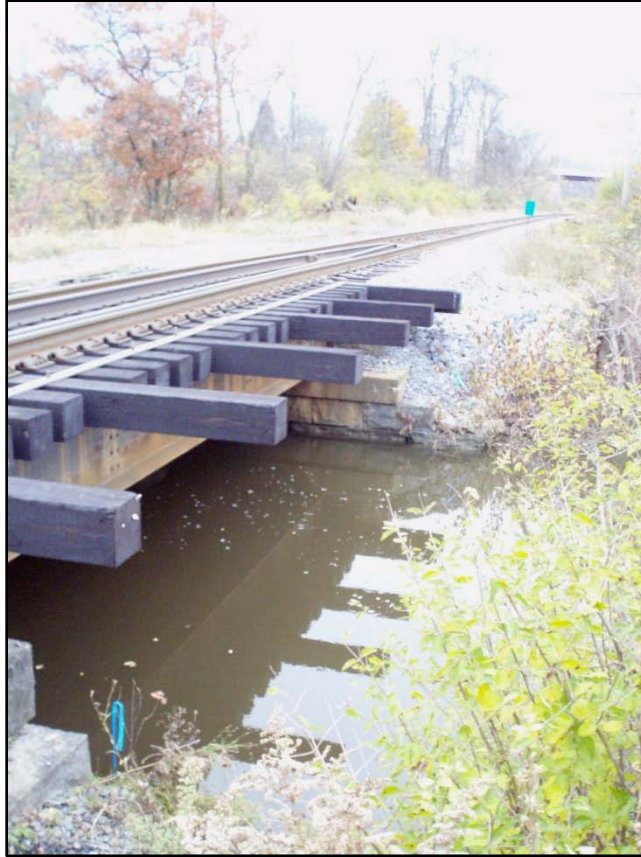
Palustrine open water (E15, Guilderland, Albany County)



Champlain Canal (D10, Whitehall, Washington County)



Halfway Creek crossing (F11, Fort Ann, Washington County)



Bond Creek crossing (A1, Kingsbury, Washington County)



Hudson River crossing (A11, Fort Edward, Washington County & Moreau, Saratoga County)



Snook Kill (A42, Northumberland, Saratoga County)



Putnam Brook (B5, Saratoga Springs, Saratoga County)



Geyser Brook crossing (B8, Saratoga Springs, Saratoga County)



Kayaderosseras Creek crossing (B10, Milton, Saratoga County)



Aplaus Kill (C33, Glenville, Schenectady County)



Poentic Kill (C58, Rotterdam, Schenectady County)



Norman Kill crossing (E74, Guilderland, Albany County)



Vly Creek (E30, New Scotland, Albany County)



Vloman Kill crossing (E45-2, New Scotland, Albany County)



Coeymans Creek (MS65, Coeymans, Albany County)



Hannacroix Creek (MS52, New Baltimore, Greene County)



Cossackie Creek (MS37, Cossackie, Greene County)



Corlaer Creek (MS30, Athens, Greene County)