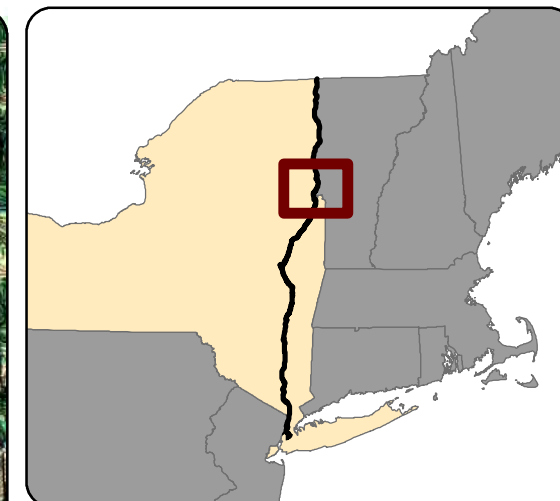
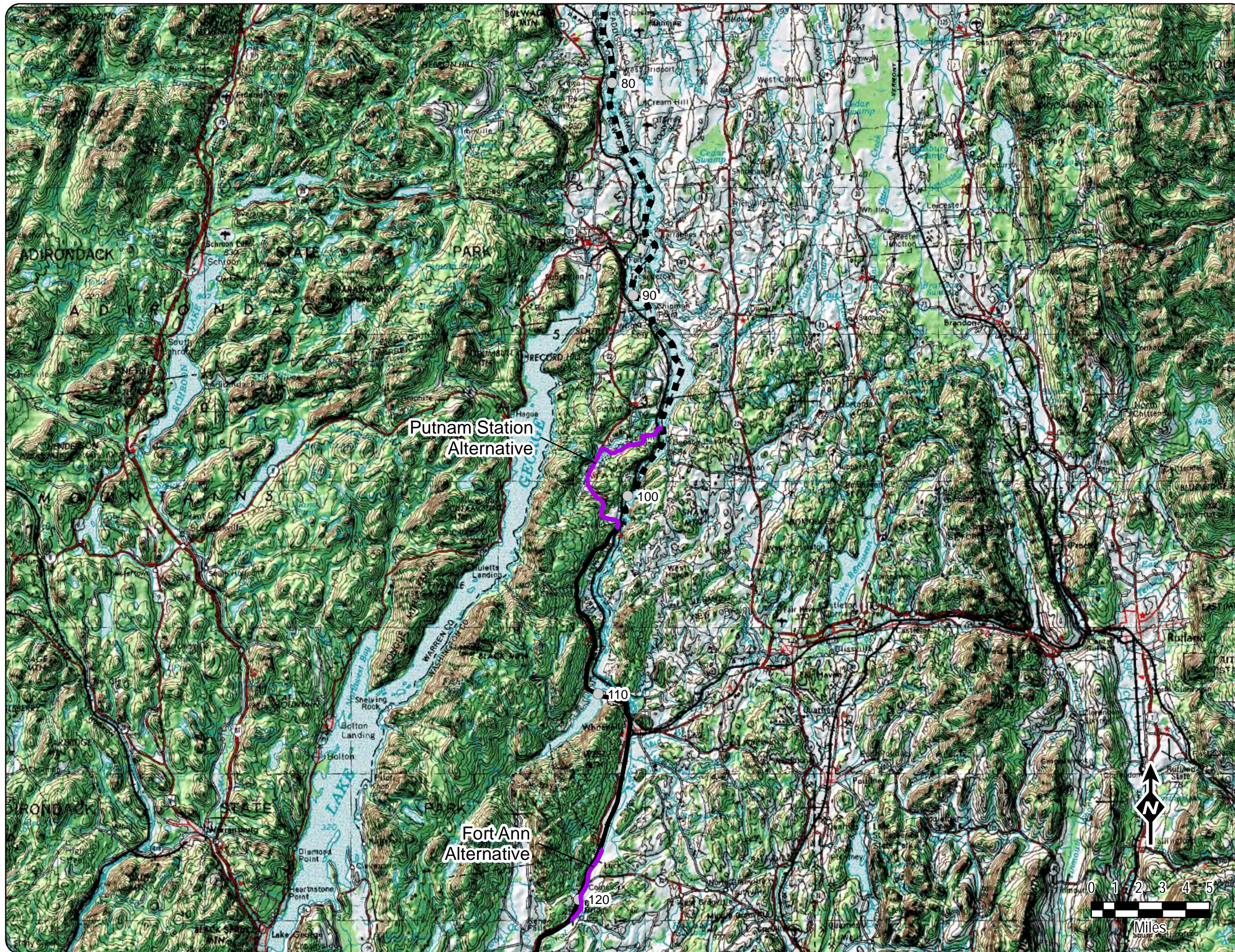




APPENDIX A

Location of Facilities on USGS Mapping



Legend

- Certified Milepost (10 mi)
- Preferred Alternative
- ■ ■ Certified Route - Submarine
- Certified Route - Terrestrial

Basemap: USGS Topo

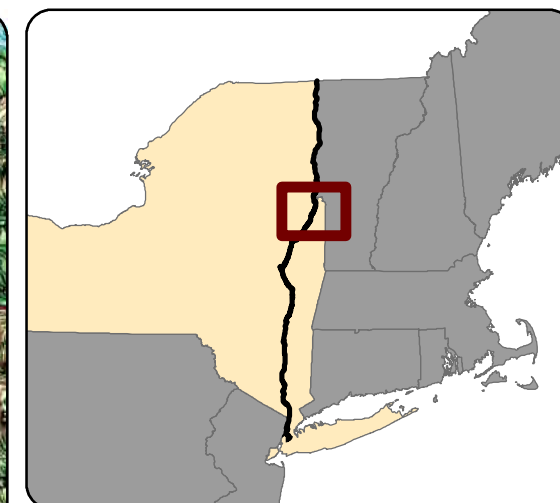
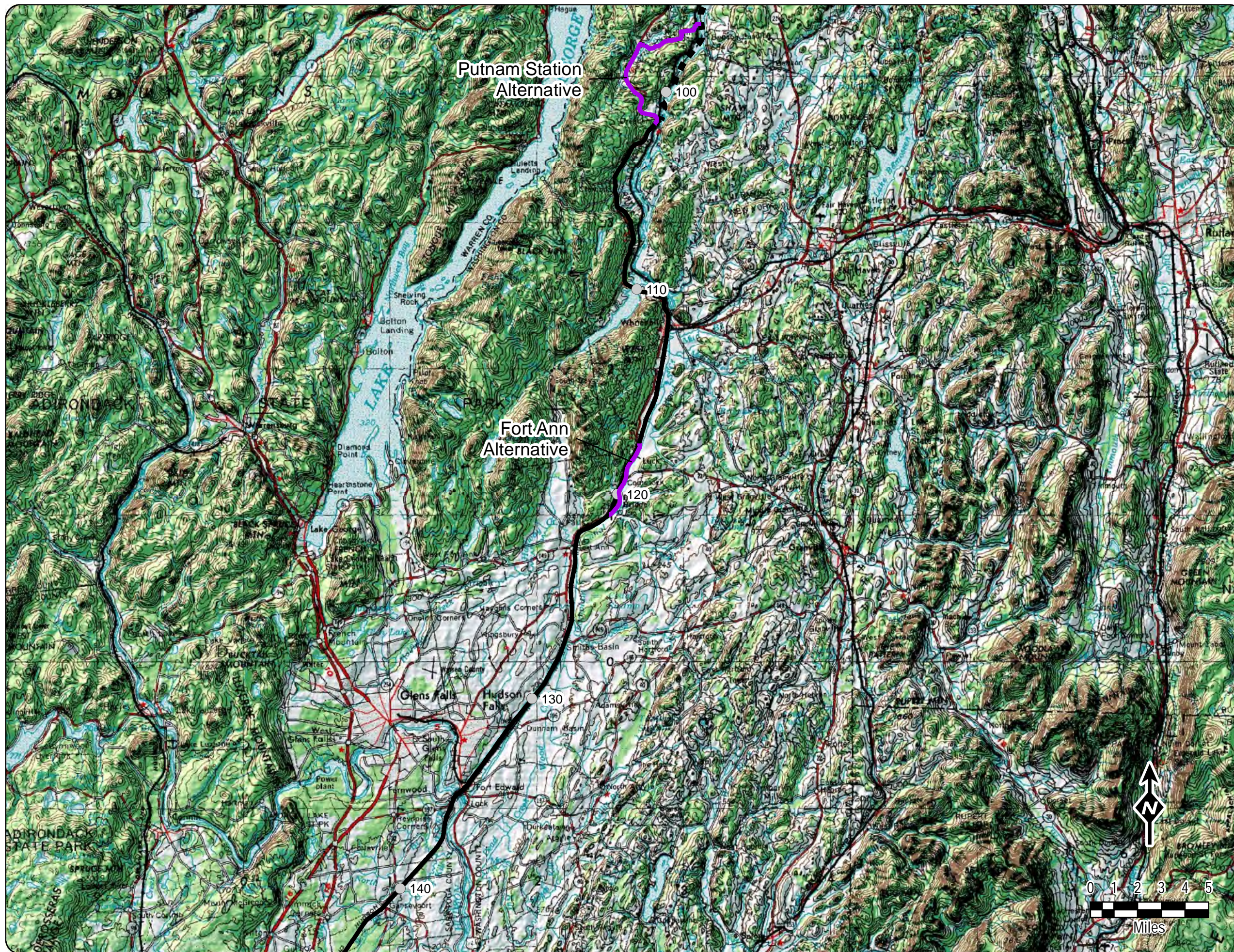


Champlain-Hudson Power Express Project
Champlain-Hudson Power Express Inc.

Appendix A

Location of Facilities
USGS 1:250,000
Putnam Station
Preferred Alternative

Prepared by: 11/18/2019



Legend

- Certified Milepost (10 mi)
- Preferred Alternative
- ■ ■ Certified Route - Submarine
- Certified Route - Terrestrial

Basemap: USGS Topo

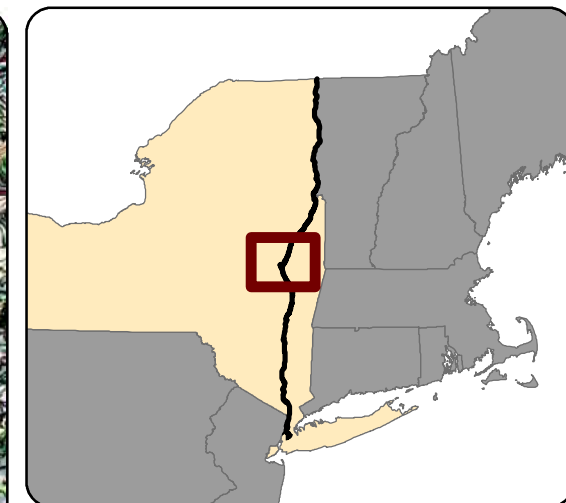
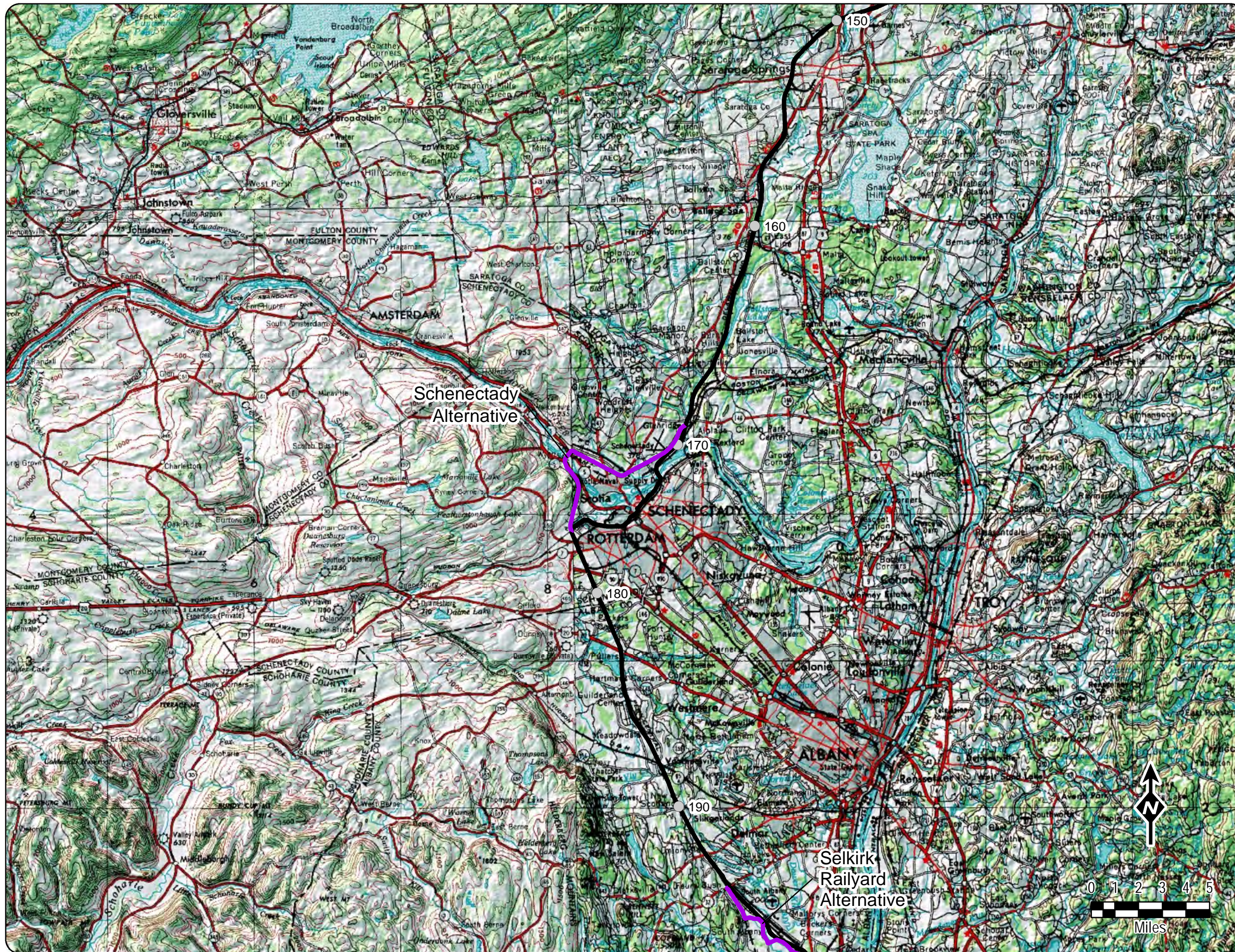


Champlain-Hudson Power Express Project
Champlain-Hudson Power Express Inc.

Appendix A

Location of Facilities
USGS 1:250,000
Fort Ann
Preferred Alternative

Prepared by: 11/18/2019



Legend

- Certified Milepost (10 mi)
- Preferred Alternative
- ■ ■ Certified Route - Submarine
- Certified Route - Terrestrial

Basemap: USGS Topo

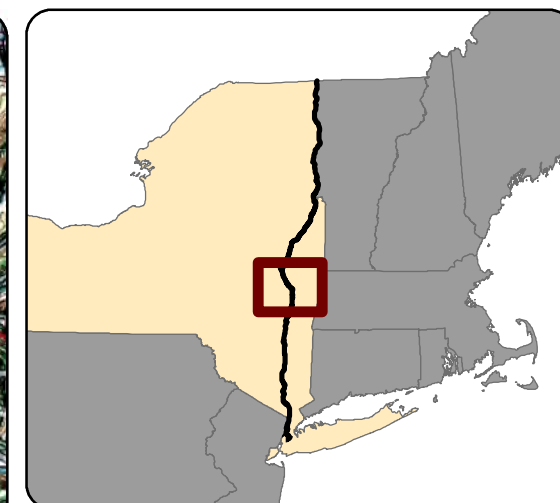
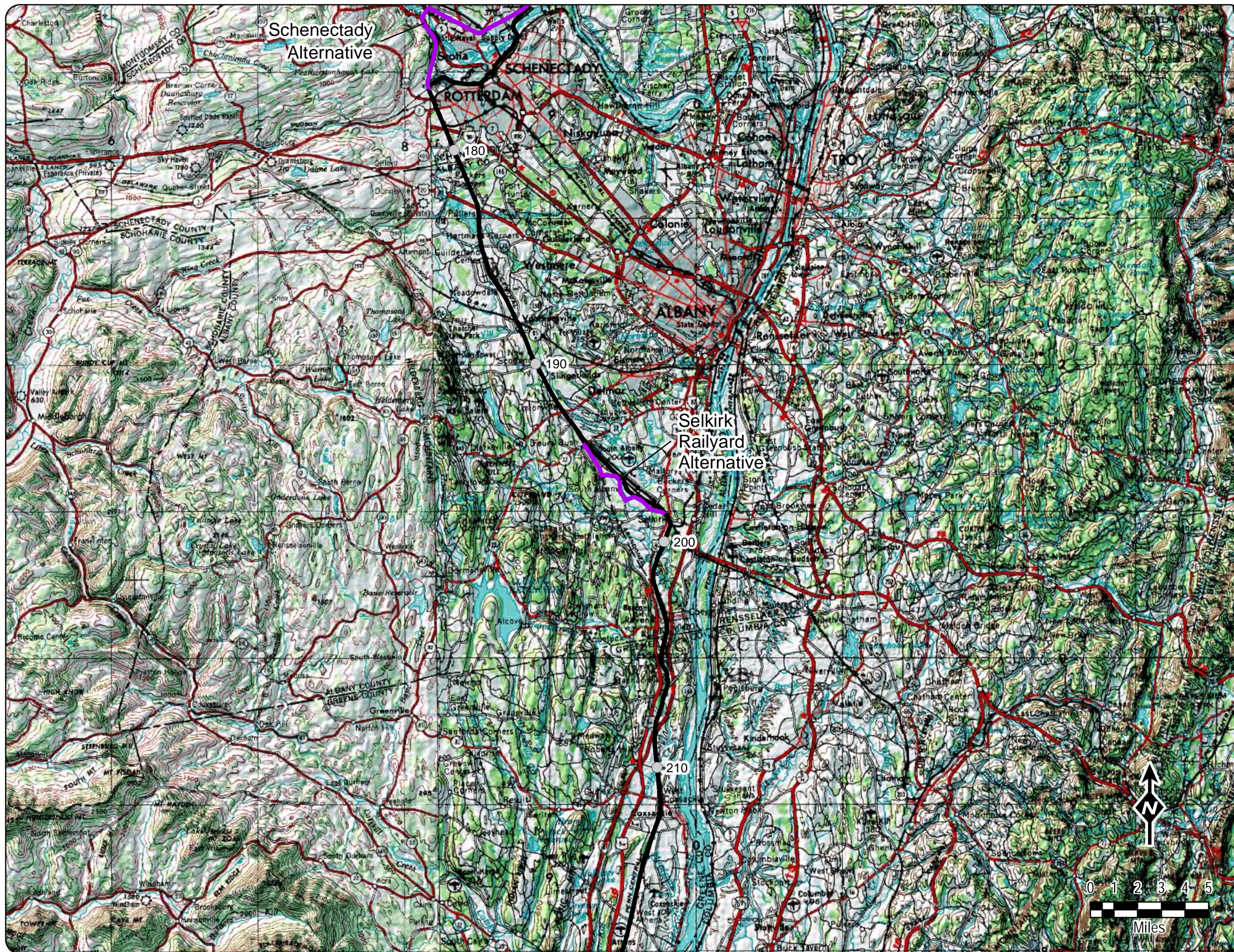


Champlain-Hudson Power Express Project
Champlain-Hudson Power Express Inc.

Appendix A

Location of Facilities
USGS 1:250,000
Schenectady
Preferred Alternative

Prepared by: 11/18/2019



Legend

- Certified Milepost (10 mi)
- Preferred Alternative
- ■ ■ Certified Route - Submarine
- Certified Route - Terrestrial

Basemap: USGS Topo

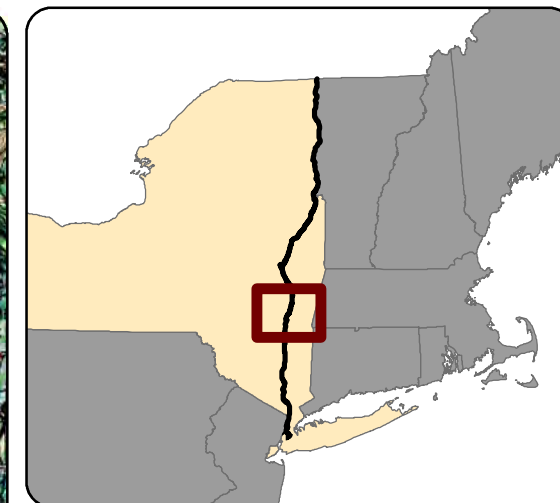
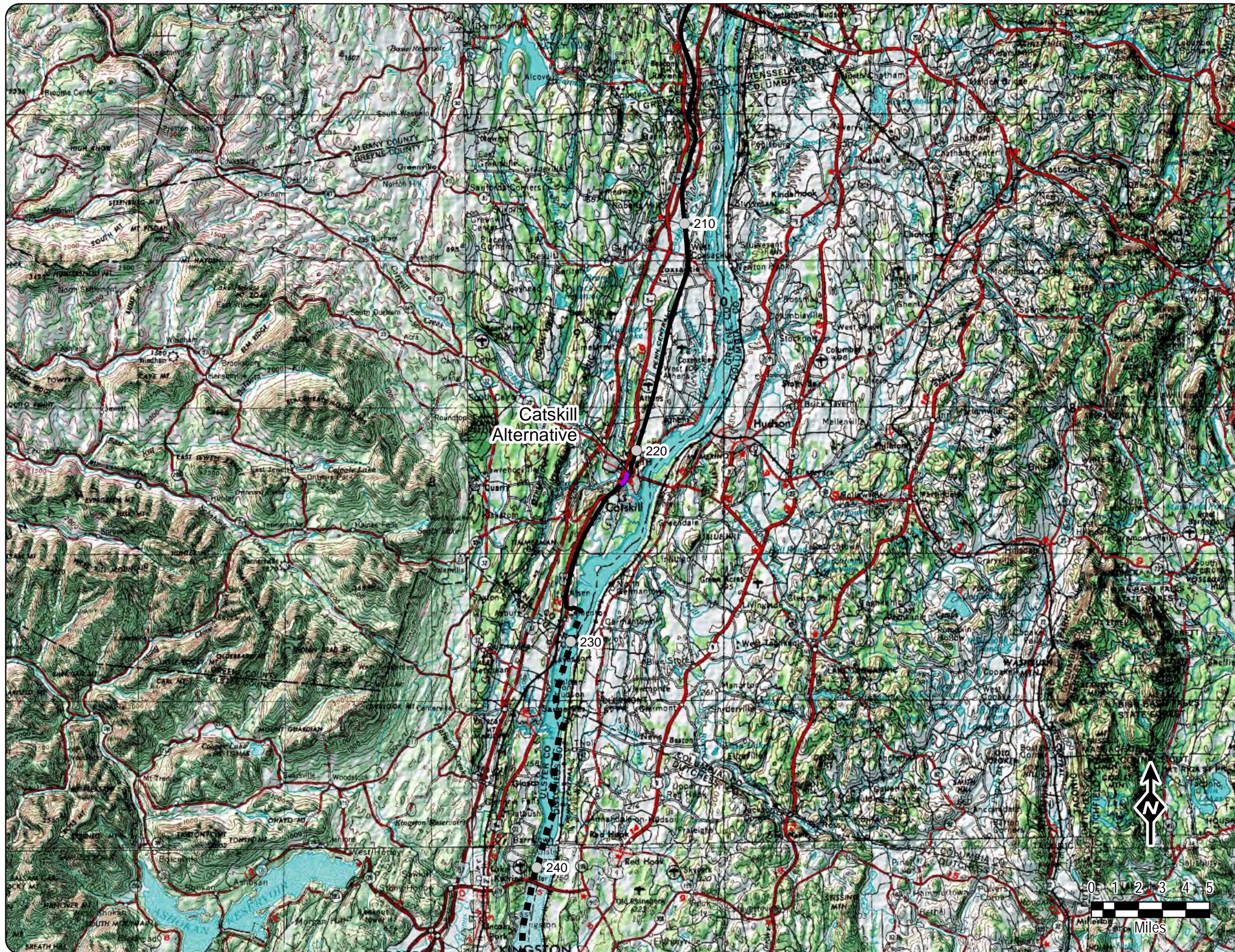


Champlain-Hudson Power Express Project
Champlain-Hudson Power Express Inc.

Appendix A

Location of Facilities
USGS 1:250,000
Selkirk Railyard
Preferred Alternative

Prepared by: 11/18/2019



Legend

- Certified Milepost (10 mi)
- Preferred Alternative
- ■ ■ Certified Route - Submarine
- Certified Route - Terrestrial

Basemap: USGS Topo



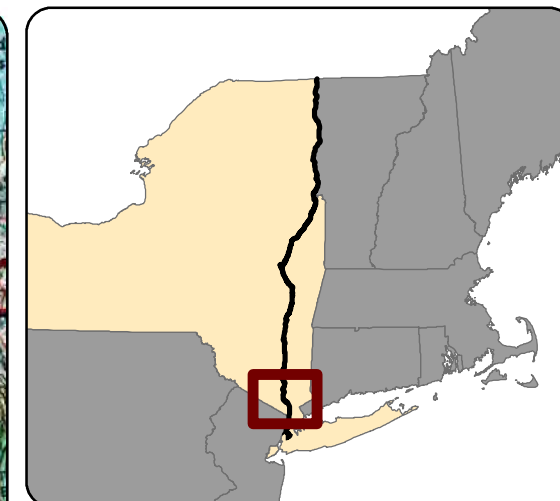
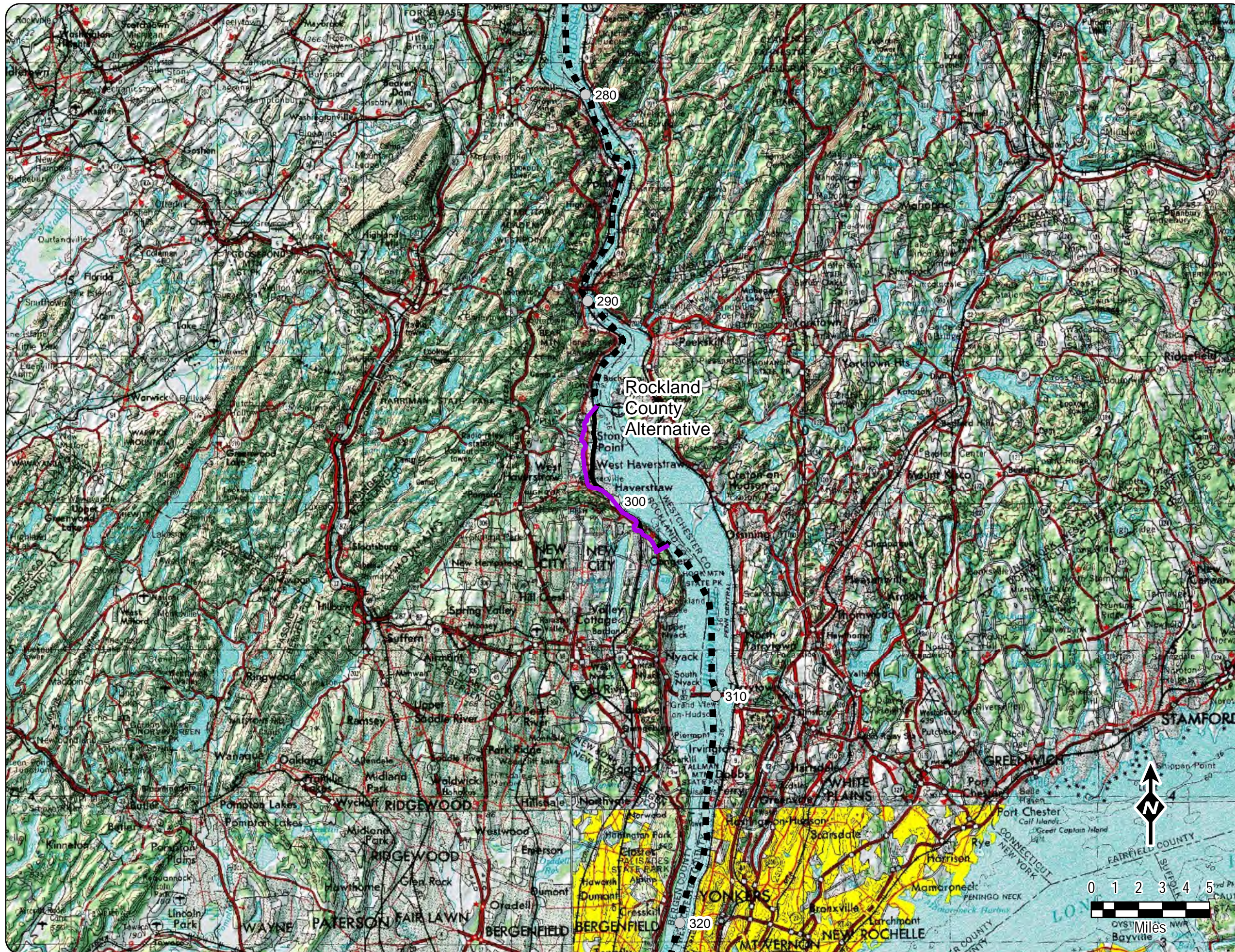
Champlain-Hudson Power Express Project
Champlain-Hudson Power Express Inc.

Appendix A

Location of Facilities
USGS 1:250,000
Catskill
Preferred Alternative

Prepared by: 11/18/2019





Legend

- Certified Milepost (10 mi)
- Preferred Alternative
- ■ ■ Certified Route - Submarine
- Certified Route - Terrestrial

Basemap: USGS Topo

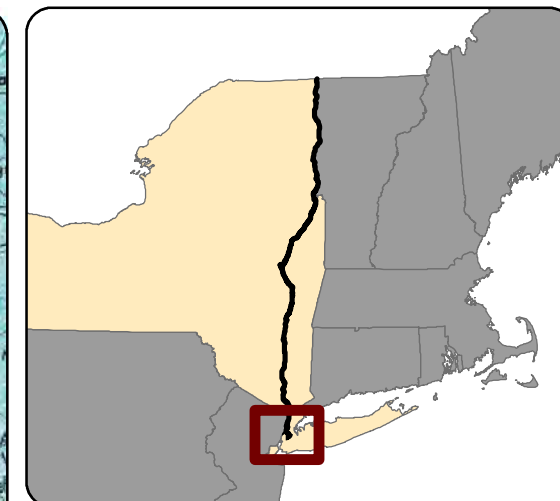
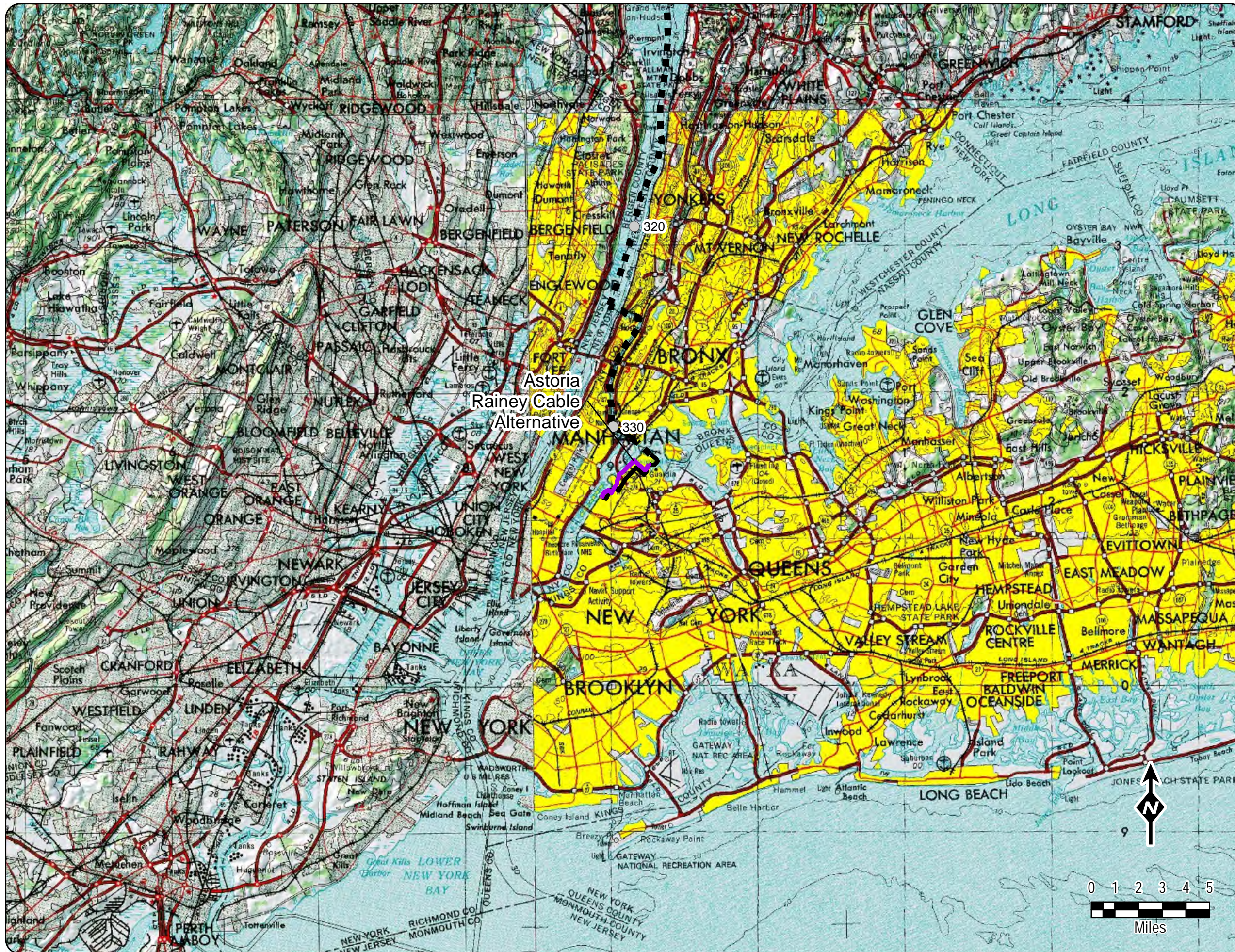


Champlain-Hudson Power Express Project
Champlain-Hudson Power Express Inc.

Appendix A

Location of Facilities
USGS 1:250,000
Rockland County
Preferred Alternative

Prepared by: 11/18/2019



Legend

- Certified Milepost (10 mi)
- Preferred Alternative
- ■ ■ Certified Route - Submarine
- Certified Route - Terrestrial

Basemap: USGS Topo



Champlain-Hudson Power Express Project
Champlain-Hudson Power Express Inc.

Appendix A

Location of Facilities
USGS 1:250,000
Astoria Rainey Cable
Preferred Alternative

Prepared by: 11/18/2019